
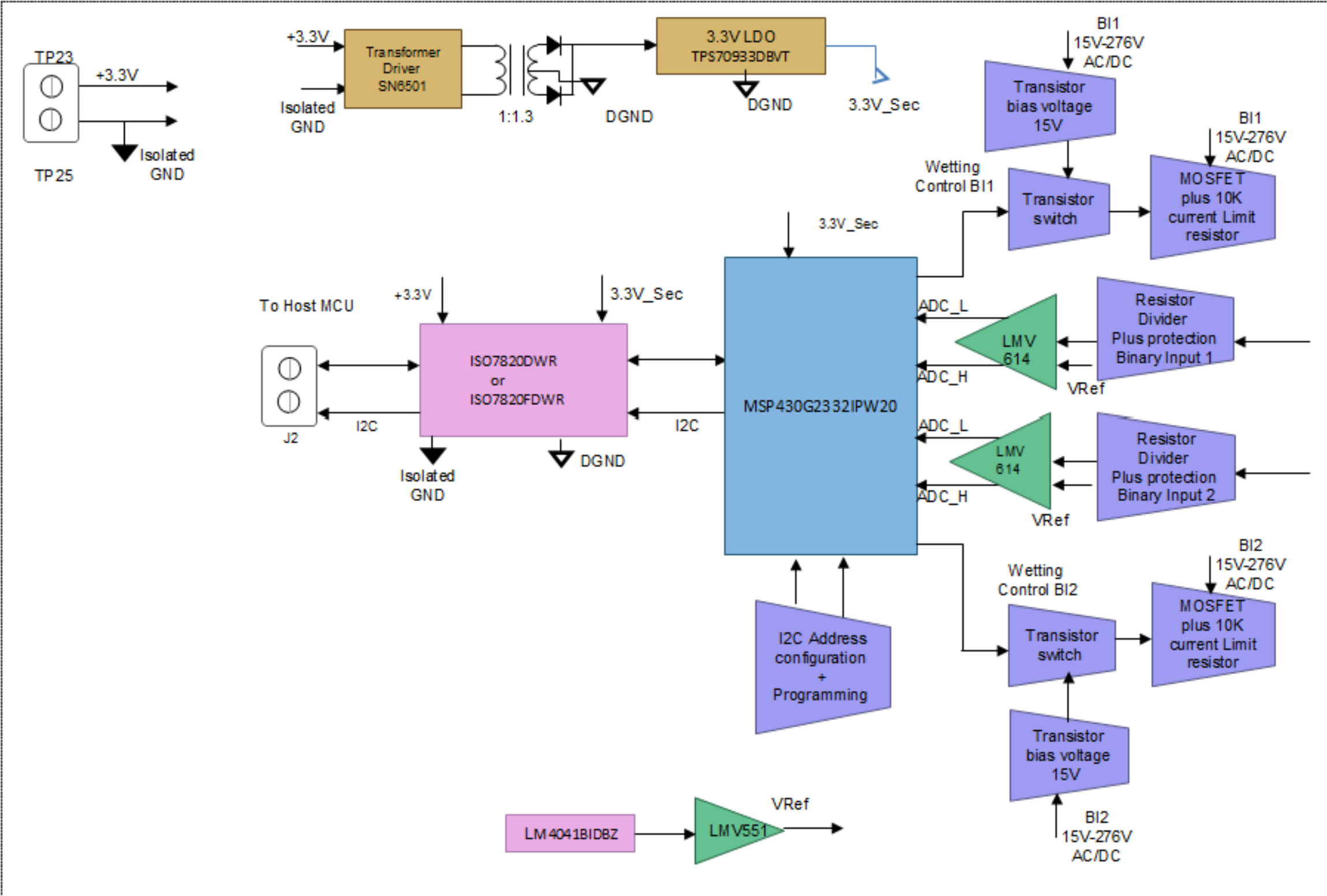


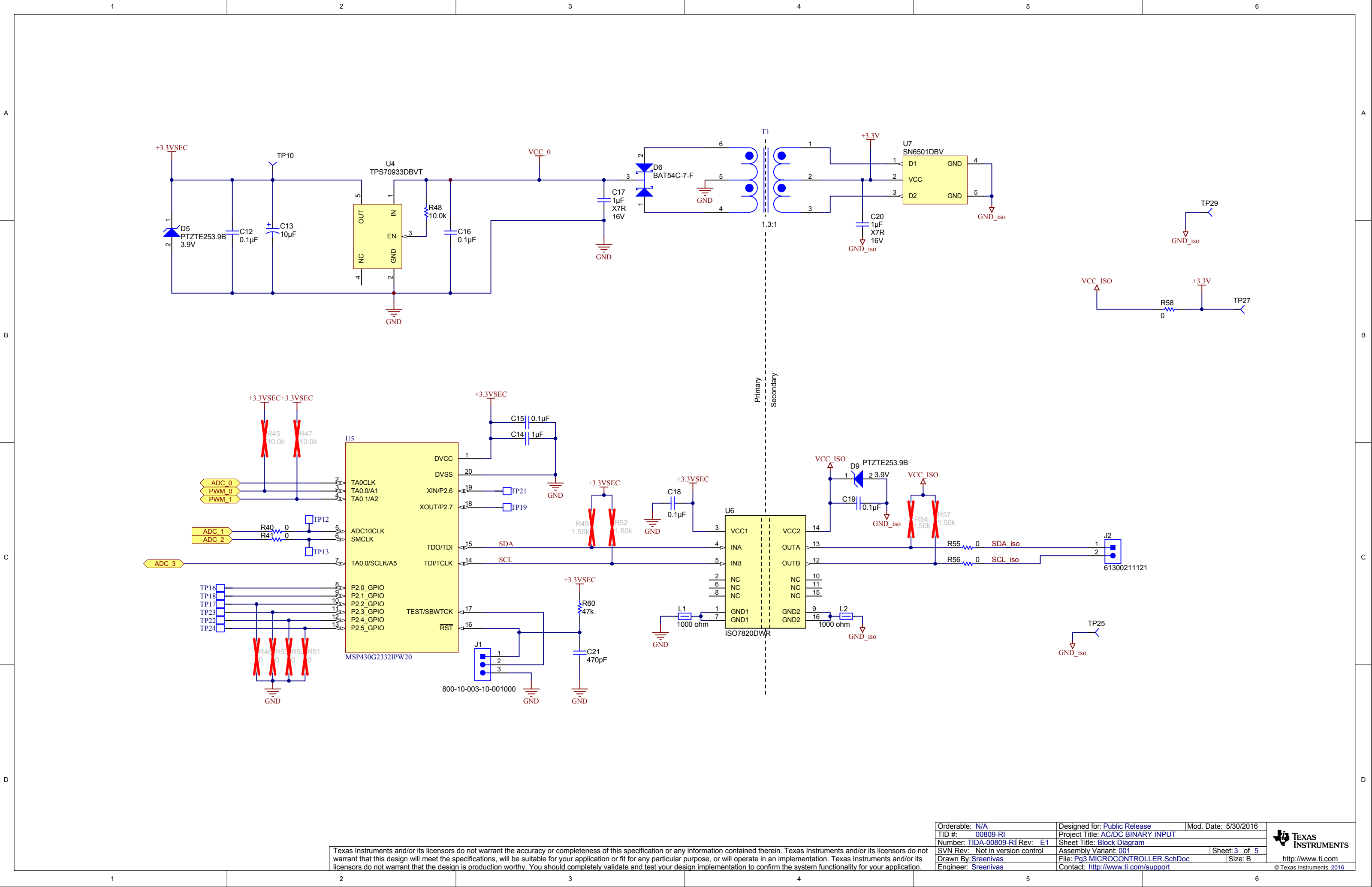
Revision History				
Rev	ECN #	Approved Date	Approved by	Notes
N/A	N/A	N/A	N/A	N/A

Page 2	BLOCK DIAGRAM
Page 3	MICROCONTROLLER
Page 4	BINARY INPUT
Page 5	HARDWARE D25-IO_ANSI-B

Orderable: N/A	Designed for: Public Release	Mod. Date: 5/30/2016	 http://www.ti.com © Texas Instruments 2016
TID #: 00809-RI	Project Title: AC/DC BINARY INPUT		
Number: TIDA-00809-RI Rev: E1	Sheet Title: Block Diagram		
SVN Rev: Not in version control	Assembly Variant: 001	Sheet: 1 of 5	
Drawn By: Sreenivas	File: Pg 1 Cover Sheet ANSI-B.SchDoc	Size: B	
Engineer: Sreenivas	Contact: http://www.ti.com/support		

AC/DC binary input TIDA-00809_RI_E1





Texas Instruments and/or its licensors do not warrant the accuracy or completeness of this specification or any information contained therein. Texas Instruments and/or its licensors do not warrant that this design will meet the specifications, will be suitable for your application or fit for any particular purpose, or will operate in an implementation. Texas Instruments and/or its licensors do not warrant that the design is production worthy. You should completely validate and test your design implementation to confirm the system functionality for your application.

Orderable: N/A	Designed for: Public Release	Mod. Date: 5/30/2016
TID #: 00809-RI	Project Title: AC/DC BINARY INPUT	
Number: TIDA-00809-RI Rev: E1	Sheet Title: Block Diagram	
SVN Rev: Not in version control	Assembly Variant: 001	Sheet: 3 of 5
Drawn By: Sreenivas	File: Pg3 MICROCONTROLLER.SchDoc	Size: B
Engineer: Sreenivas	Contact: http://www.ti.com/support	

