

ADC34XX
Channel A and B Input
Sheet 2

ADC34XX
Channel C and D Input
Sheet 3

ADC34XX
Sheet 4

Clock Input
Sheet 5

LVDS Outputs
Sheet 6

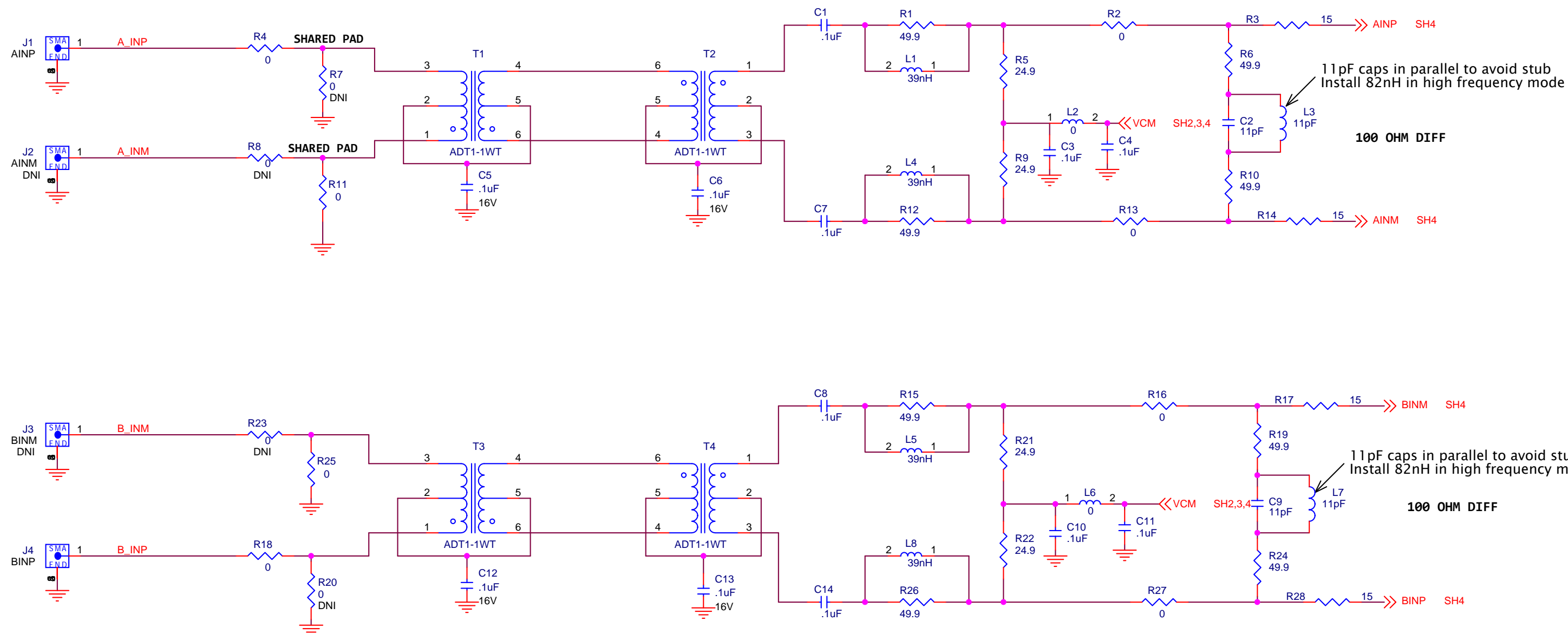
USB Interface
Sheet 7

TPS62080
TPS7A4700
INA138
Power Supplies
Sheet 8

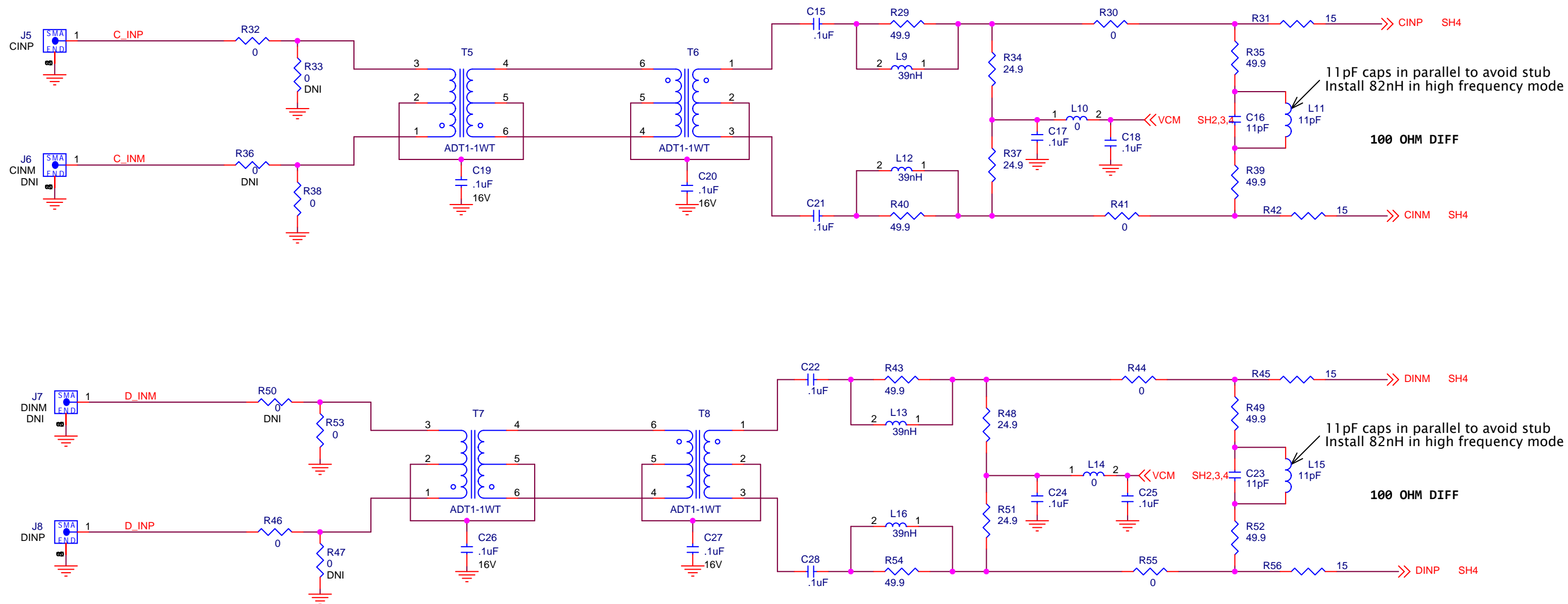


| | | | |
|-----------|--------------------------------|-------|----------|
| Title | | | |
| Size B | Document Number ADC34XX EVM | | Rev B |
| Date: | Wednesday, March 05, 2014 | Sheet | 1 of 8 |

| |
|---------------------|
| Engineer: Kang Hsia |
| PCB: Loan Nguyen |

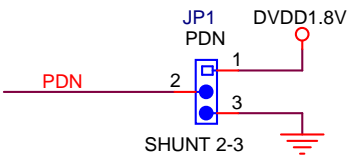
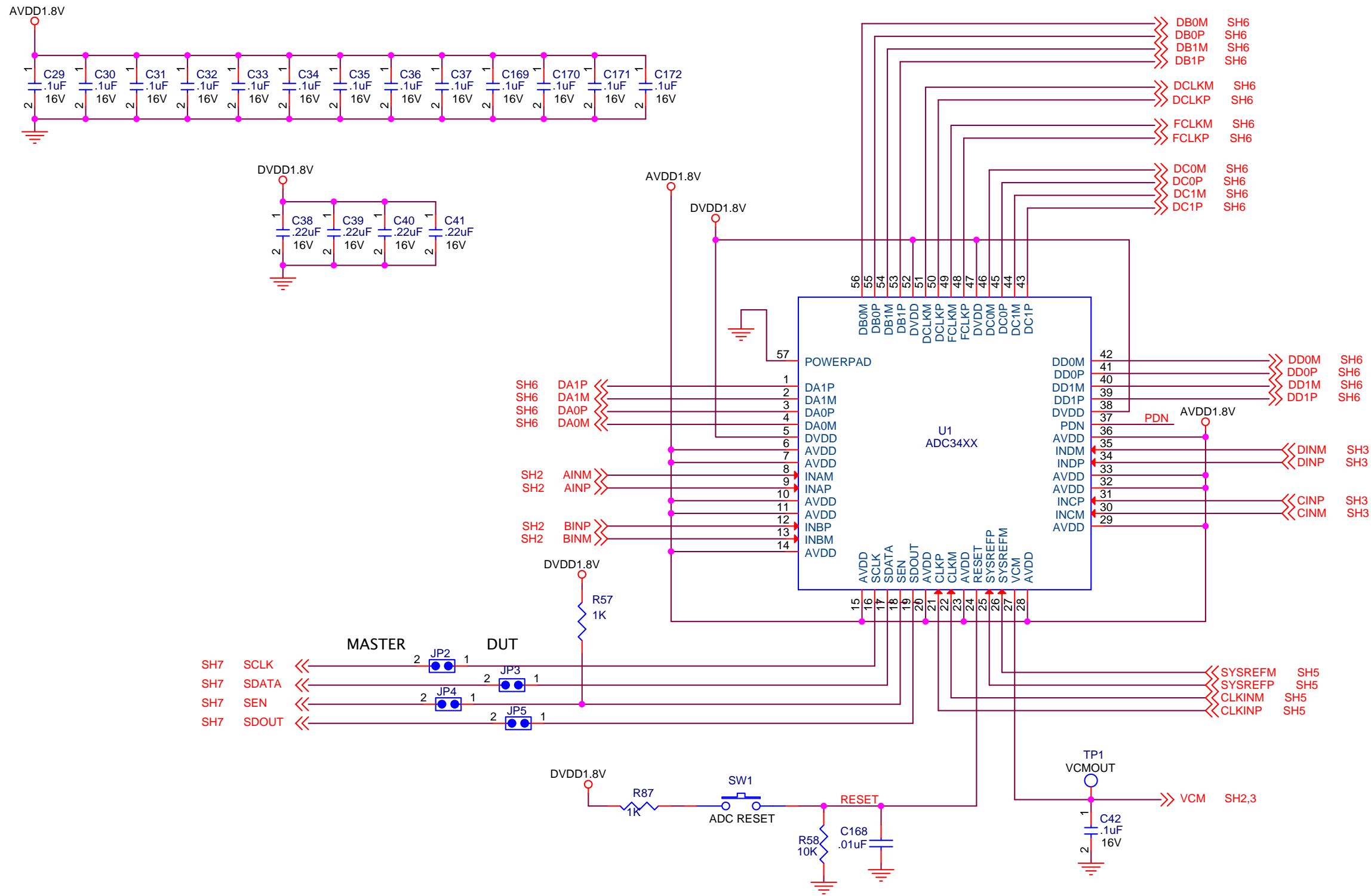


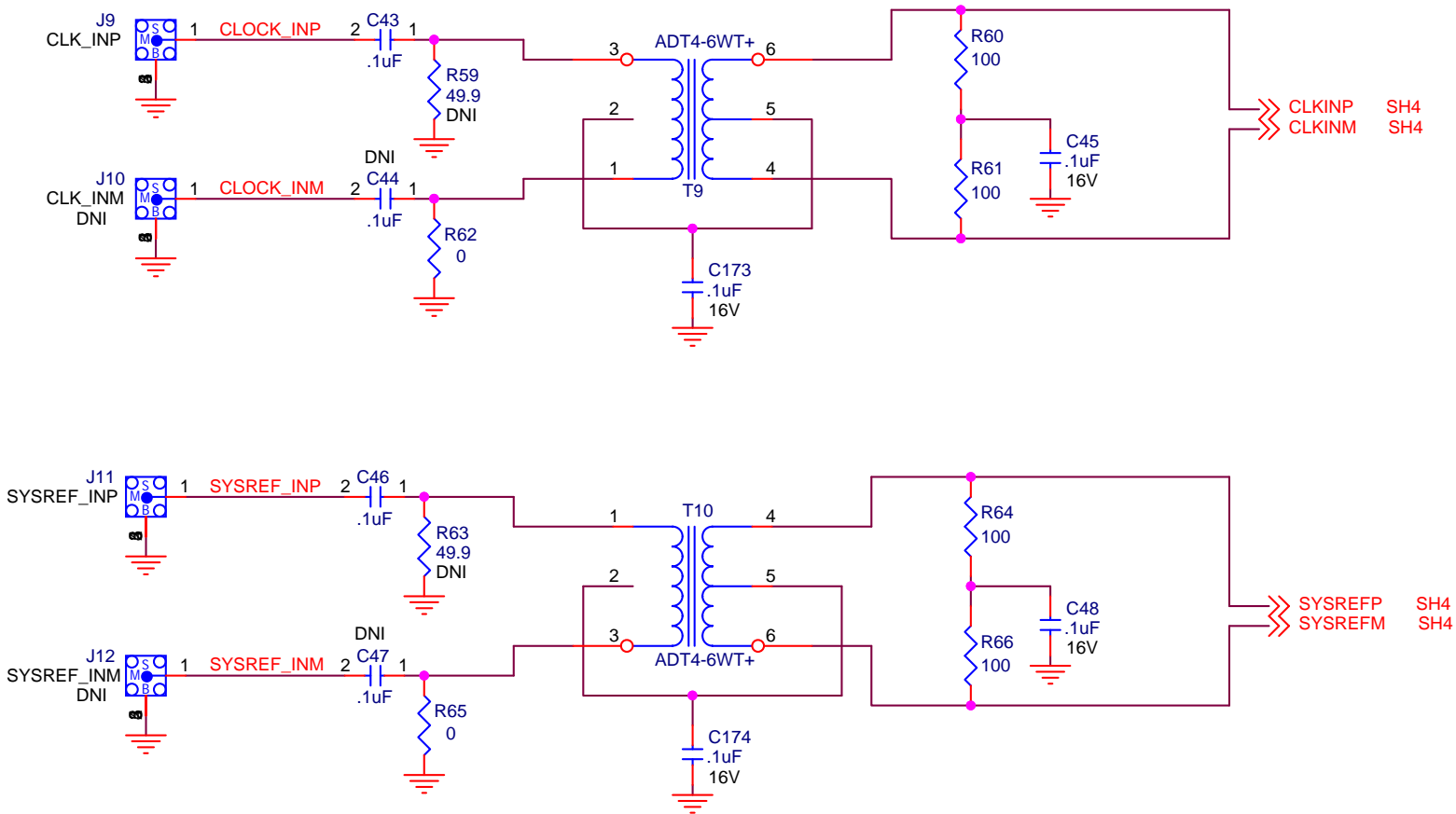
DNI = DO NOT INSTALL











| | | |
|-----------|-------------------------------|--------------|
| Title | | |
| ANALOG IN | | |
| Size B | Document Number ADC34XXEVM | Rev B |
| Date: | Wednesday, March 05, 2014 | Sheet 3 of 8 |

DNI = DO NOT INSTALL



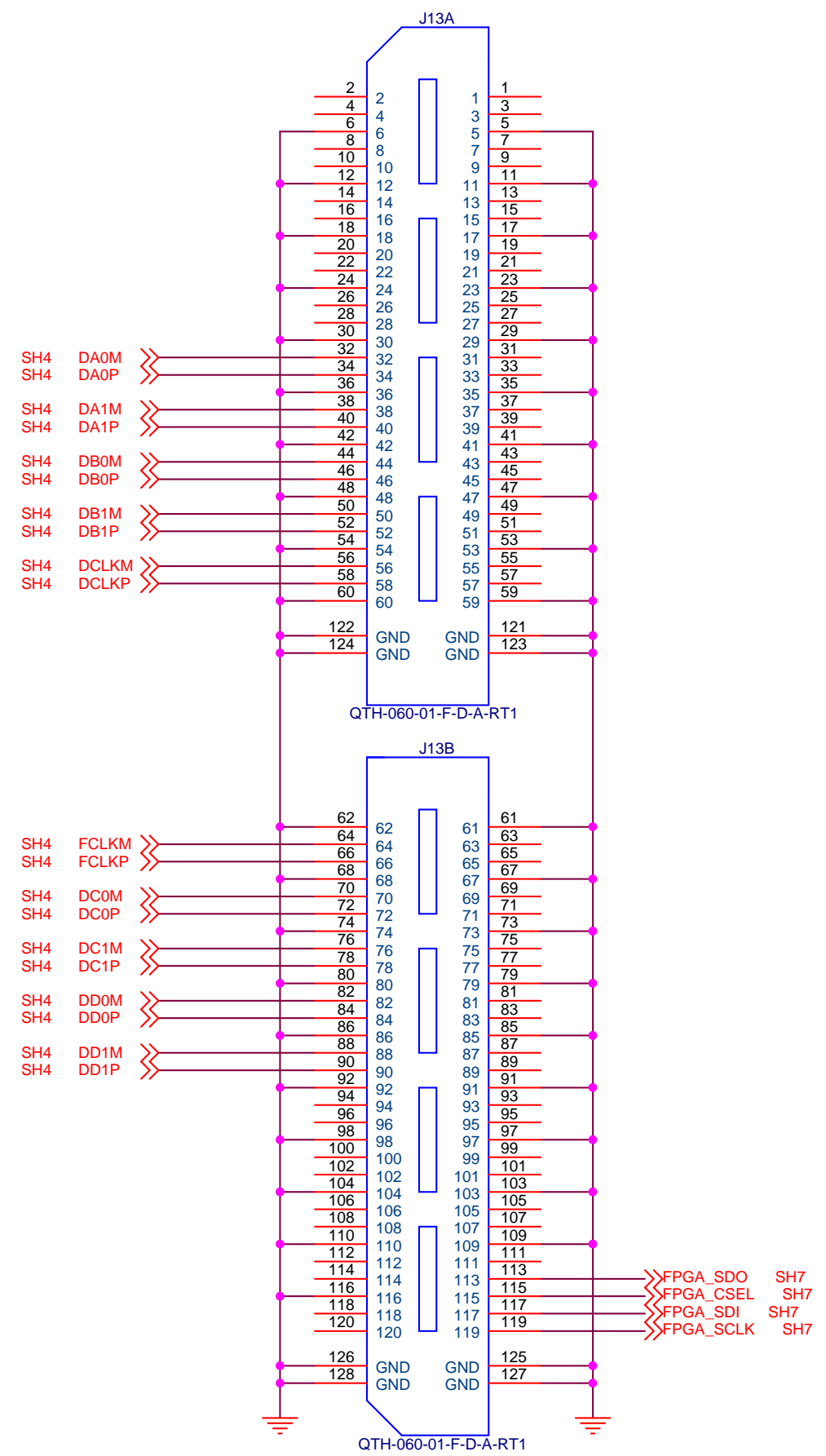


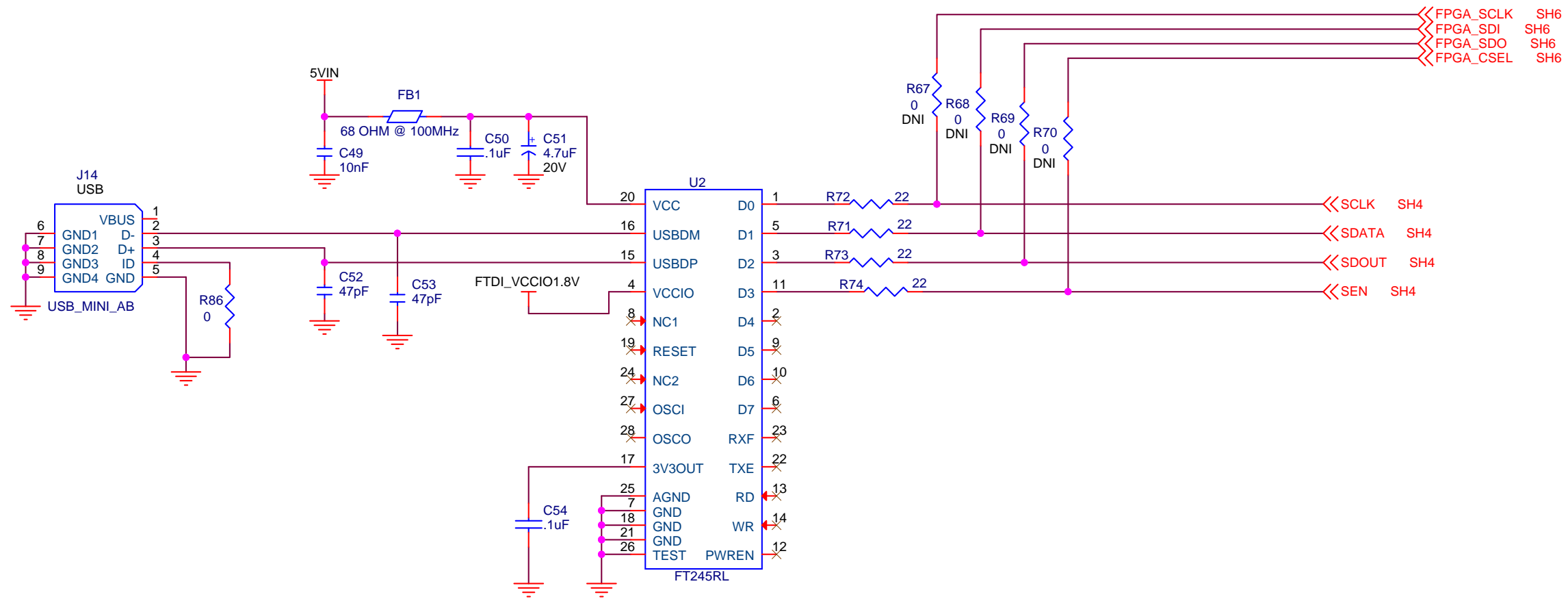
MECHANICAL PARTS

- | | | | |
|---|---|---|---|
|  |  |  |  |
| SCREW PANHEAD 4-40 x 3/8 | SCREW PANHEAD 4-40 x 3/8 | SCREW PANHEAD 4-40 x 3/8 | SCREW PANHEAD 4-40 x 3/8 |
|  |  |  |  |
| STANDOFF ALUM HEX 4-40 x .500 | STANDOFF ALUM HEX 4-40 x .500 | STANDOFF ALUM HEX 4-40 x .500 | STANDOFF ALUM HEX 4-40 x .500 |

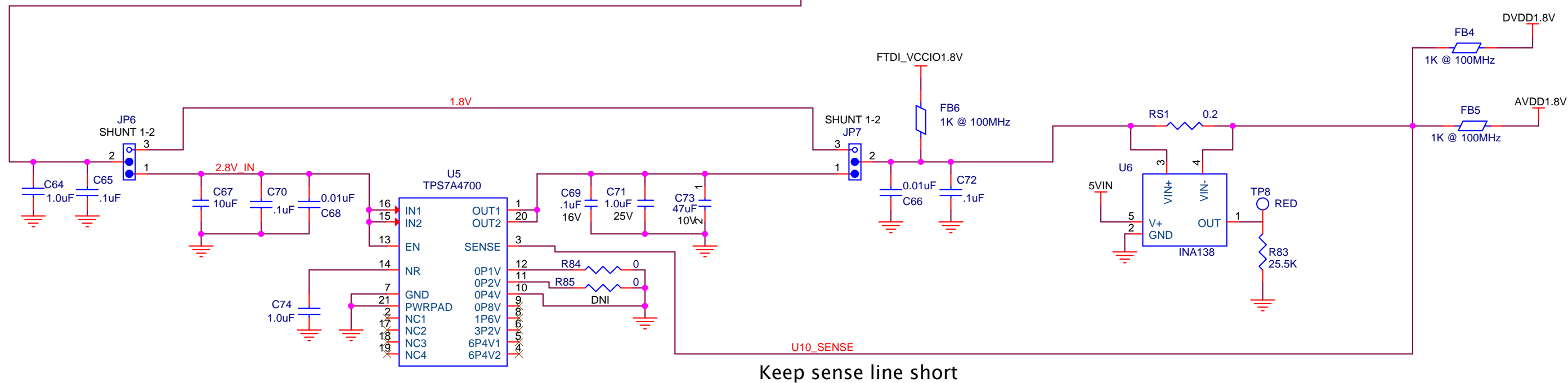
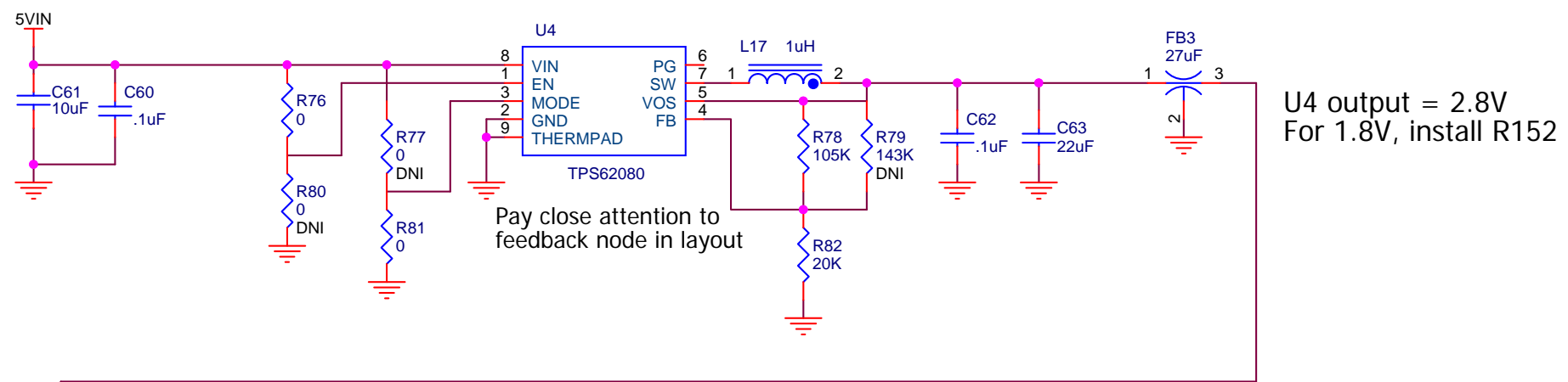
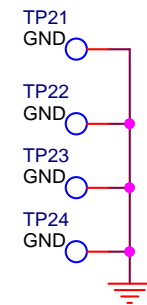
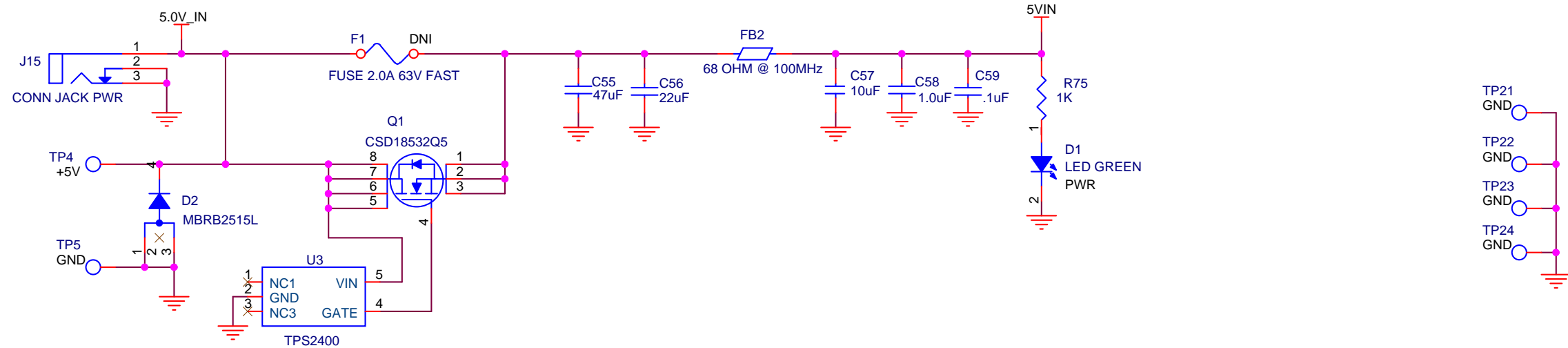


| | | | | | |
|-------|---------------------------|--|-------------|--------|-----|
| Title | | | CLOCK INPUT | | |
| Size | Document Number | | | | Rev |
| B | ADC34XXEVM | | | | B |
| Date: | Wednesday, March 05, 2014 | | Sheet | 5 of 8 | |





| | | |
|-------|---------------------------|--------------|
| Title | | |
| USB | | |
| Size | Document Number | Rev |
| B | ADC34XXEVM | B |
| Date: | Wednesday, March 05, 2014 | Sheet 7 of 8 |



DNI = DO NOT INSTALL