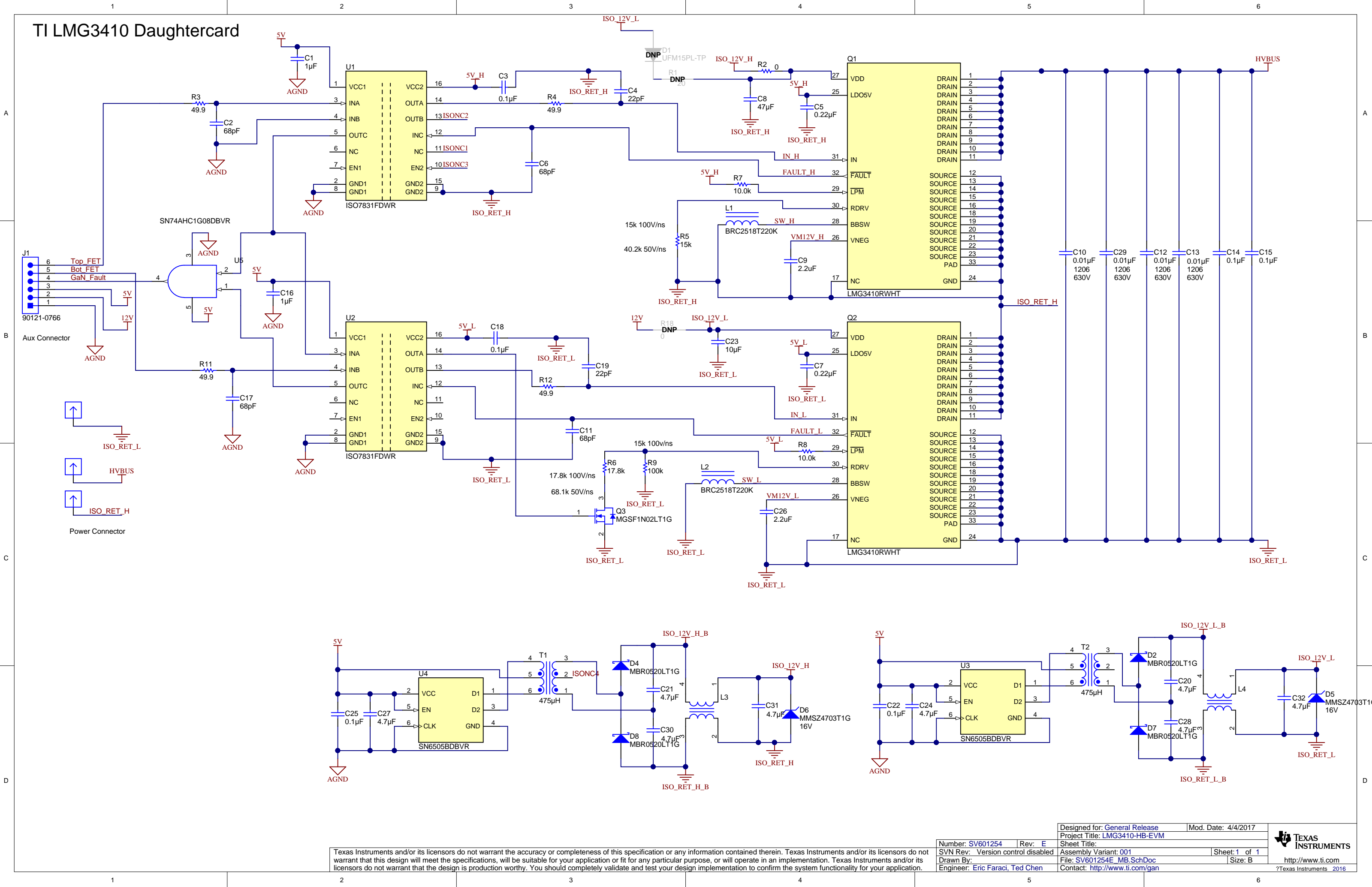


TI LMG3410 Daughtercard



Texas Instruments and/or its licensors do not warrant the accuracy or completeness of this specification or any information contained therein. Texas Instruments and/or its licensors do not warrant that this design will meet the specifications, will be suitable for your application or fit for any particular purpose, or will operate in an implementation. Texas Instruments and/or its licensors do not warrant that the design is production worthy. You should completely validate and test your design implementation to confirm the system functionality for your application.

Designed for: General Release		Mod. Date: 4/4/2017	
Project Title: LMG3410-HB-EVM		Number: SV601254	
Sheet Title:		Rev: E	
Assembly Variant: 001		SVN Rev: Version control disabled	
File: SV601254E_MB.SchDoc		Sheet: 1 of 1	
Contact: http://www.ti.com/gan		Engineer: Eric Faraci, Ted Chen	
Size: B		Drawn By:	

DNP

FID1

DNP

FID2

DNP

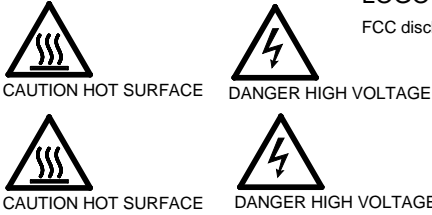
FID3

PCB
LOGO
Texas Instruments

PCB
LOGO
Pb-Free Symbol

PCB
LOGO
FCC disclaimer

PCB Number: SV601254
PCB Rev: E



HS1
MECH
3-101004U

TIM1
MECH
TI-Bond Ply100 0.005"/.127mm(1).cu-27.0mm by 27.0mm

ZZ2

Assembly Note

These assemblies are ESD sensitive, ESD precautions shall be observed.

ZZ3

Assembly Note

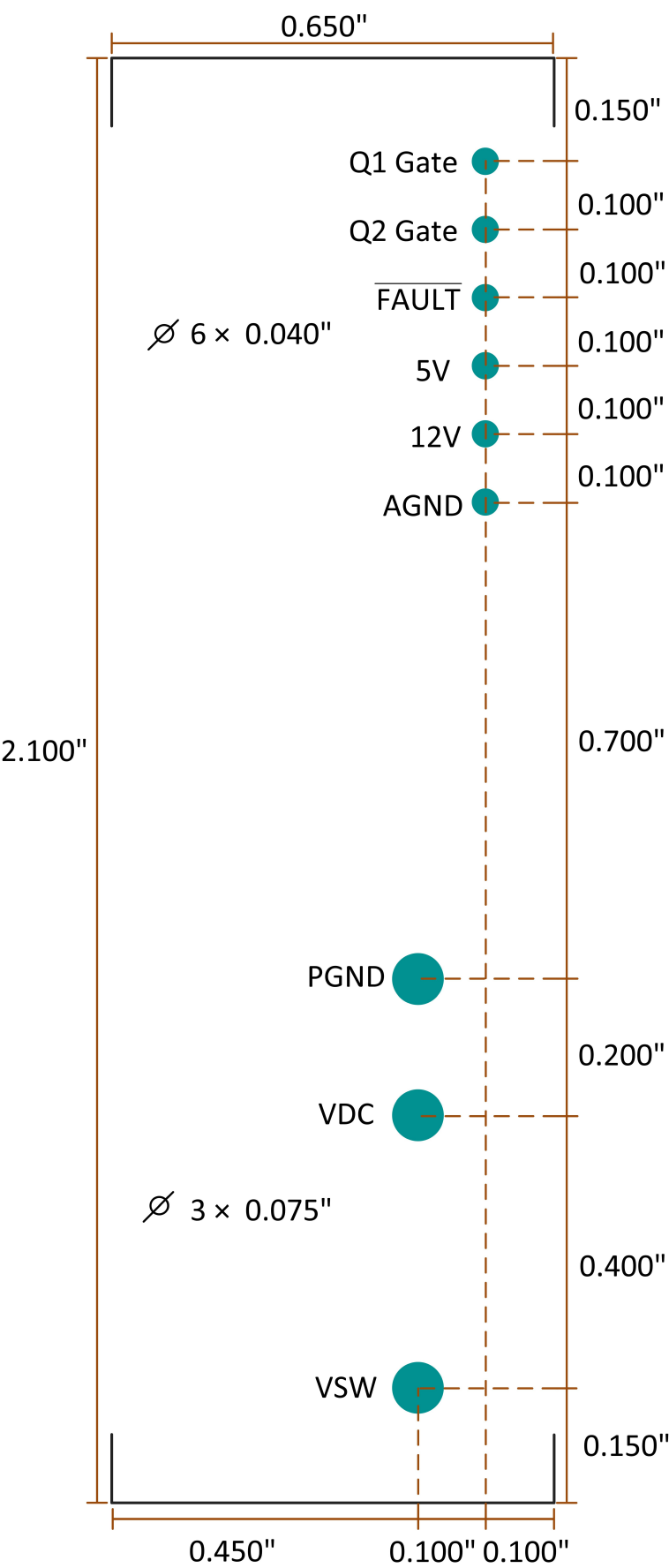
These assemblies must be clean and free from flux and all contaminants. Use of no clean flux is not acceptable.

ZZ4

Assembly Note

These assemblies must comply with workmanship standards IPC-A-610 Class 2, unless otherwise specified.

TI LMG3410 FET Card Recommended Footprint



Recommended Signal Connector: Molex 0448120024

Recommended Heatsink Set
TIM: Bergquist BP100-0.005-00-1112
Heatsink: Cool Innovations 3-101004U

Recommended Power Connector: Mill-Max 0312-0-15-XX-34-XX-10-0

Texas Instruments and/or its licensors do not warrant the accuracy or completeness of this specification or any information contained therein. Texas Instruments and/or its licensors do not warrant that this design will meet the specifications, will be suitable for your application or fit for any particular purpose, or will operate in an implementation. Texas Instruments and/or its licensors do not warrant that the design is production worthy. You should completely validate and test your design implementation to confirm the system functionality for your application.