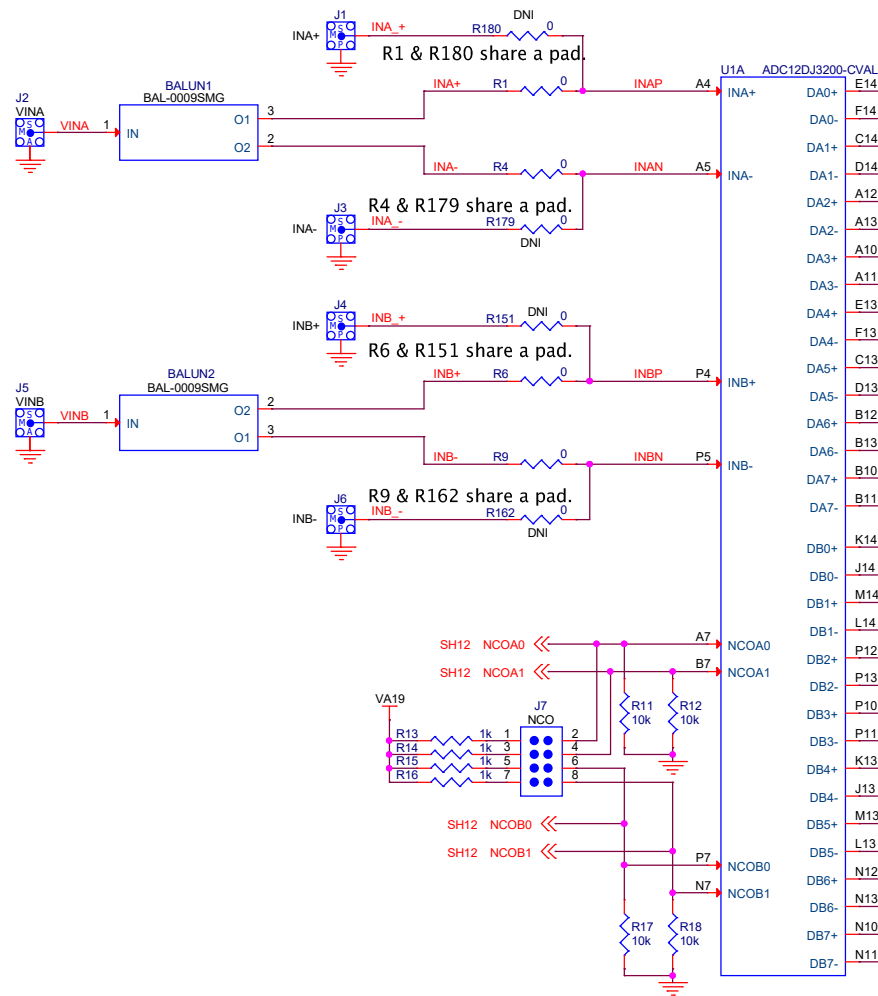


Title		
ADC12DJ3200EVMCVAL		
Size	Document Number	Rev
B	DC004	A
Date: Wednesday, December 20, 2017		
Sheet 1 of 15		

Engineer: BRINKHURST 11/2016  
PCB: JV SMITH 11/2016

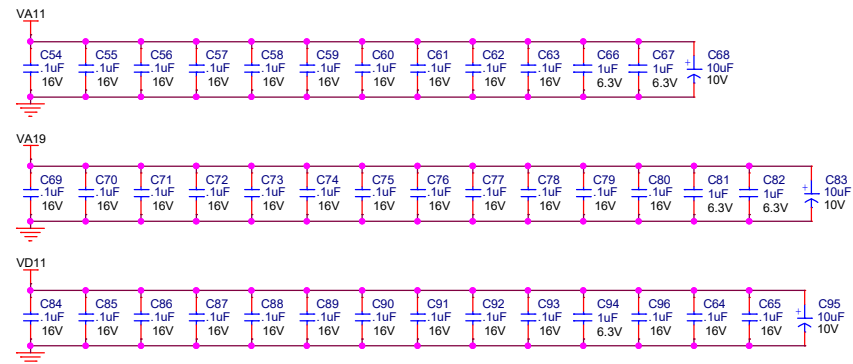
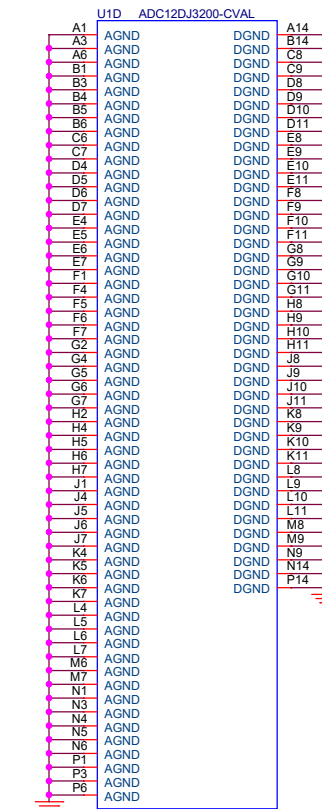


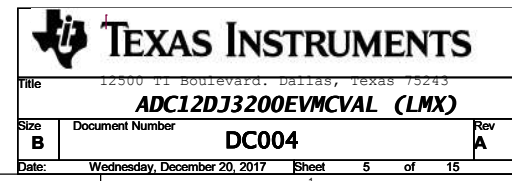
DA0+	E14	DA0+	C5	.1uF	<<DA0_P SH8
DA0-	F14	DA0-	C6	.1uF	<<DA0_M SH8
DA1+	C14	DA1+	C7	.1uF	<<DA1_P SH8
DA1-	D14	DA1-	C8	.1uF	<<DA1_M SH8
DA2+	A12	DA2+	C9	.1uF	<<DA2_P SH8
DA2-	A13	DA2-	C10	.1uF	<<DA2_M SH8
DA3+	A10	DA3+	C11	.1uF	<<DA3_P SH8
DA3-	A11	DA3-	C12	.1uF	<<DA3_M SH8
DA4+	E13	DA4+	C13	.1uF	<<DA4_P SH10
DA4-	F13	DA4-	C15	.1uF	<<DA4_M SH10
DA5+	C13	DA5+	C16	.1uF	<<DA5_P SH10
DA5-	D13	DA5-	C18	.1uF	<<DA5_M SH10
DA6+	B12	DA6+	C19	.1uF	<<DA6_P SH8
DA6-	B13	DA6-	C21	.1uF	<<DA6_M SH8
DA7+	B10	DA7+	C22	.1uF	<<DA7_P SH8
DA7-	B11	DA7-	C23	.1uF	<<DA7_M SH8
DB0+	K14	DB0+	C25	.1uF	<<DB0_P SH8
DB0-	J14	DB0-	C26	.1uF	<<DB0_M SH8
DB1+	M14	DB1+	C27	.1uF	<<DB1_P SH8
DB1-	L14	DB1-	C28	.1uF	<<DB1_M SH8
DB2+	P12	DB2+	C29	.1uF	<<DB2_P SH8
DB2-	P13	DB2-	C30	.1uF	<<DB2_M SH8
DB3+	P10	DB3+	C31	.1uF	<<DB3_P SH8
DB3-	P11	DB3-	C32	.1uF	<<DB3_M SH8
DB4+	K13	DB4+	C33	.1uF	<<DB4_P SH10
DB4-	J13	DB4-	C34	.1uF	<<DB4_M SH10
DB5+	M13	DB5+	C35	.1uF	<<DB5_P SH10
DB5-	L13	DB5-	C36	.1uF	<<DB5_M SH10
DB6+	N12	DB6+	C37	.1uF	<<DB6_P SH10
DB6-	N13	DB6-	C38	.1uF	<<DB6_M SH10
DB7+	N10	DB7+	C39	.1uF	<<DB7_P SH10
DB7-	N11	DB7-	C40	.1uF	<<DB7_M SH10

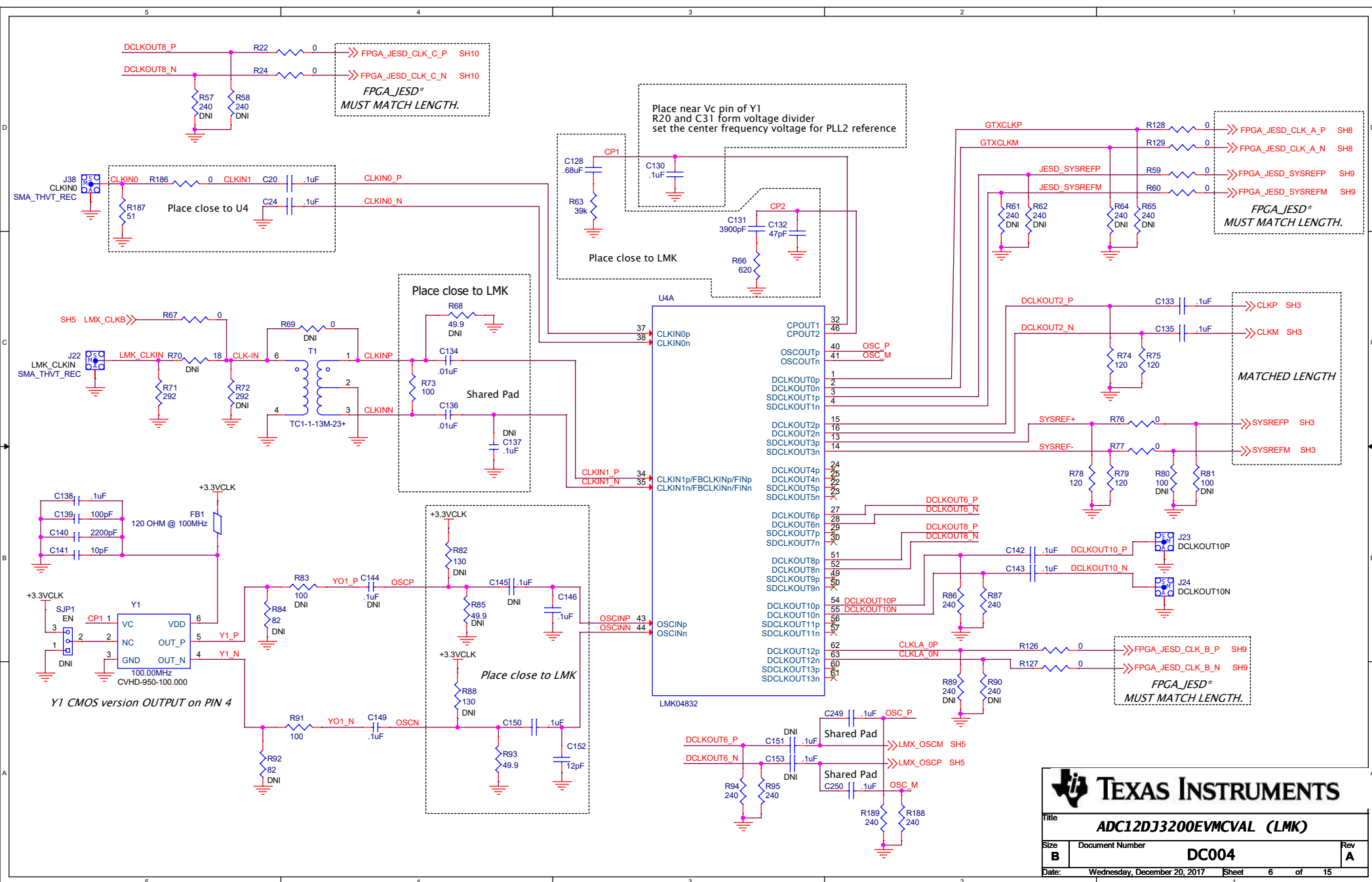


Title			
ADC12DJ3200EVMCVAL (ANALOG INPUT)			
Size	Document Number	Rev	
B	DC004	A	
Date:	Wednesday, December 20, 2017	Sheet	2 of 15

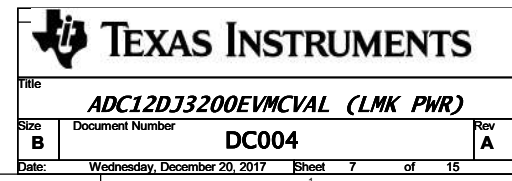


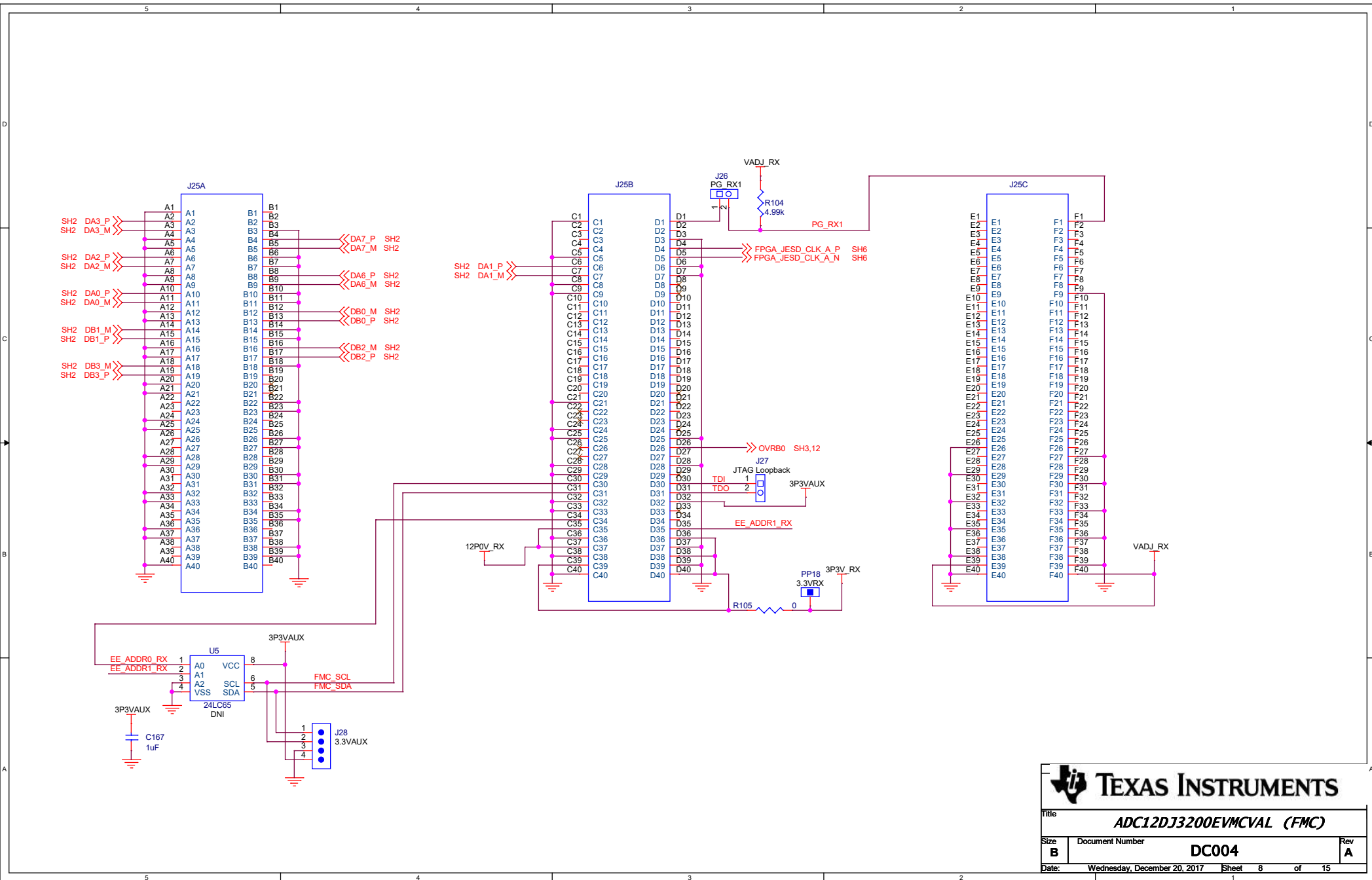




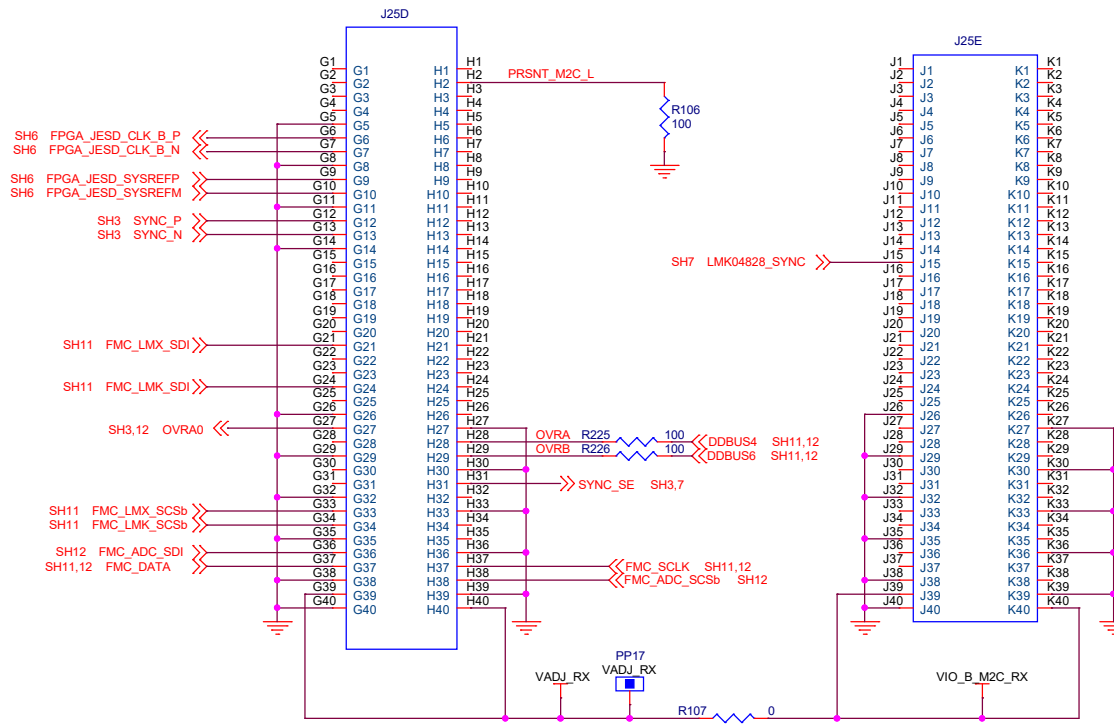
**TEXAS INSTRUMENTS**

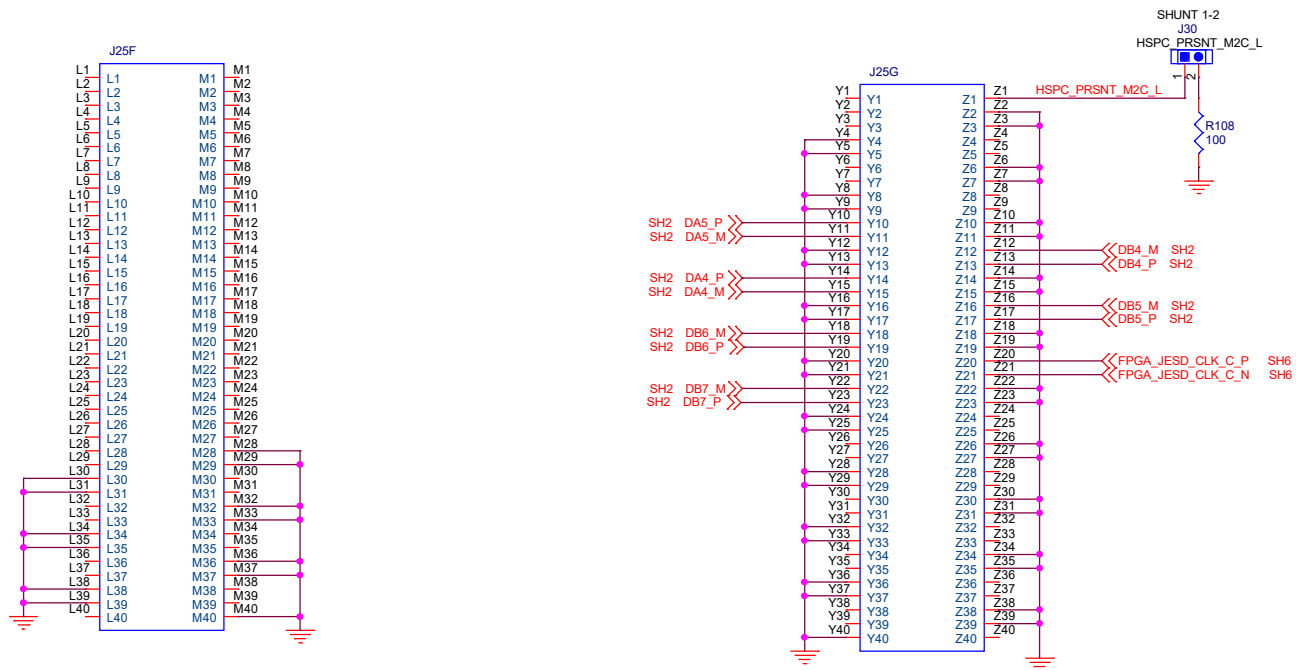
Title					<b>ADC12DJ3200EVMCVAL (LMK)</b>					
Size		Document Number						Rev		
<b>B</b>		<b>DC004</b>						<b>A</b>		
Date:		Wednesday, December 20, 2017			Sheet		6		of 15	

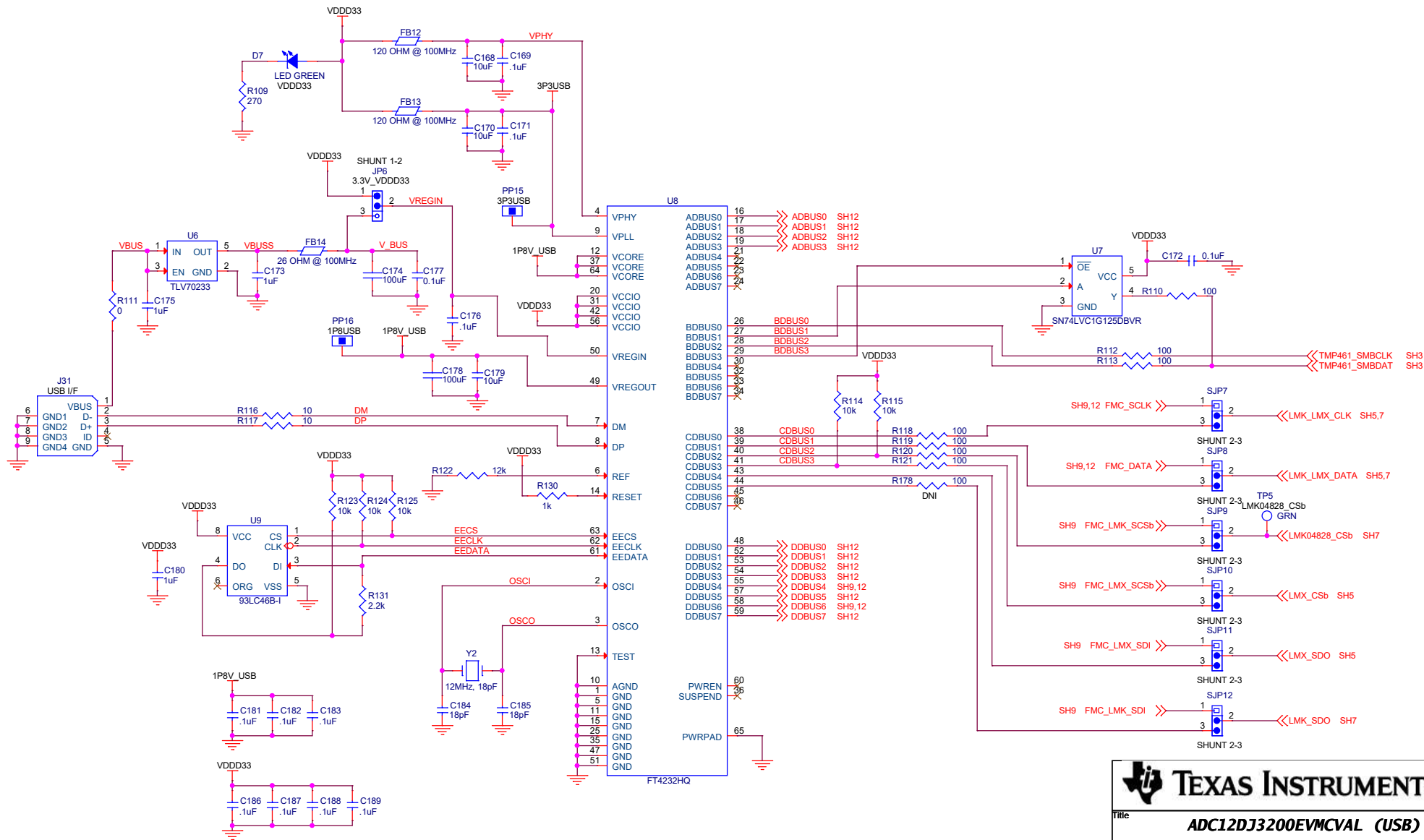


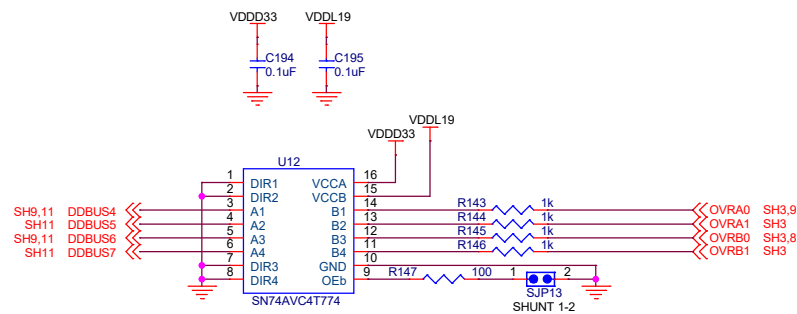
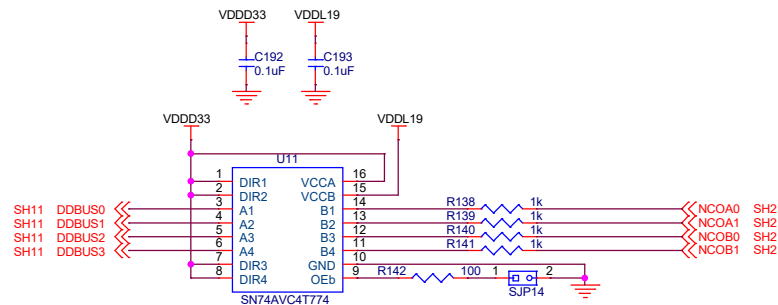
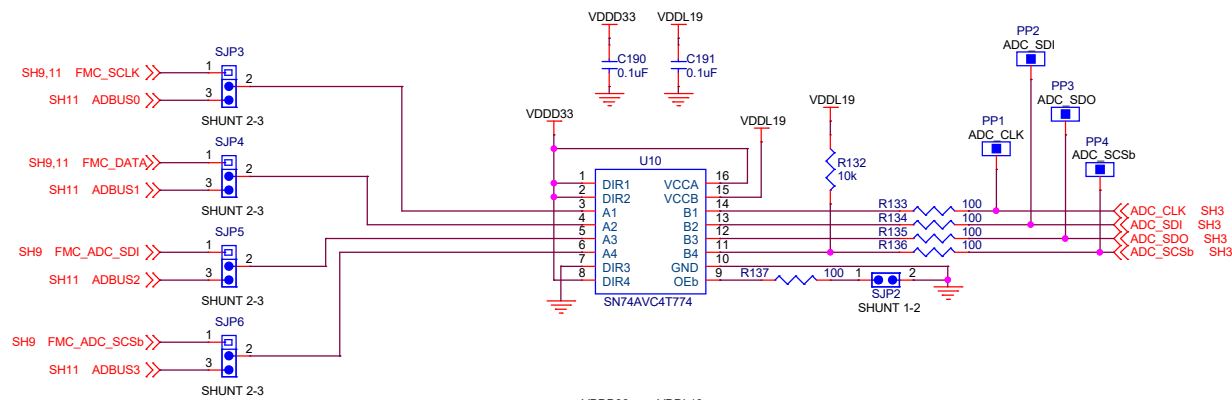








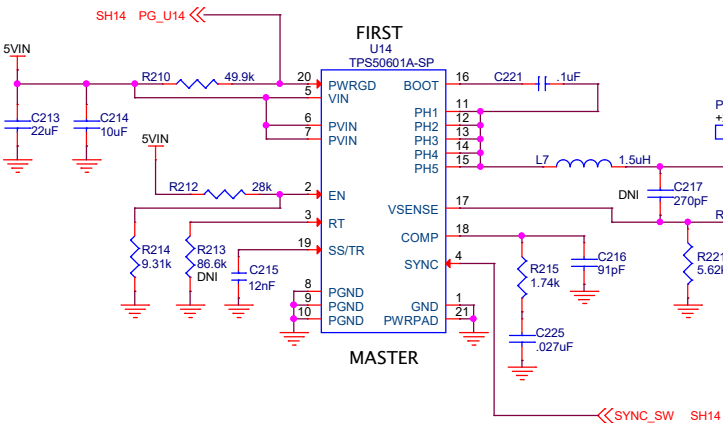
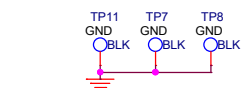
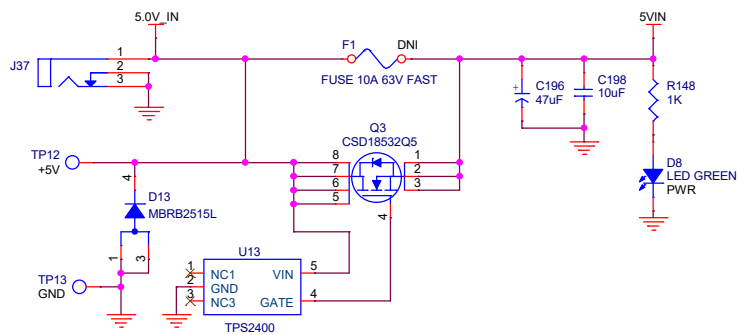




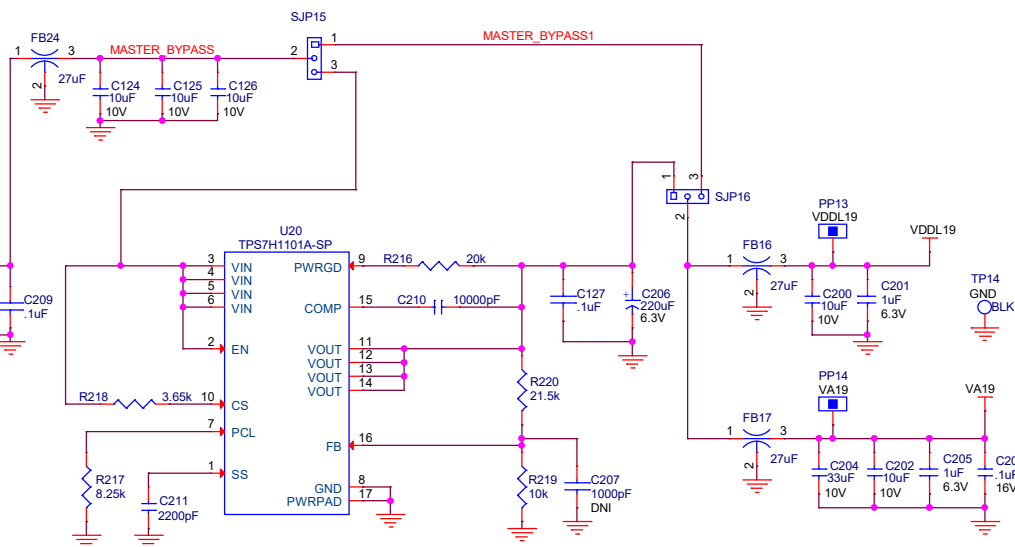
Title  
**ADC12DJ3200EVMVAL (LEVEL SHIFTERS)**

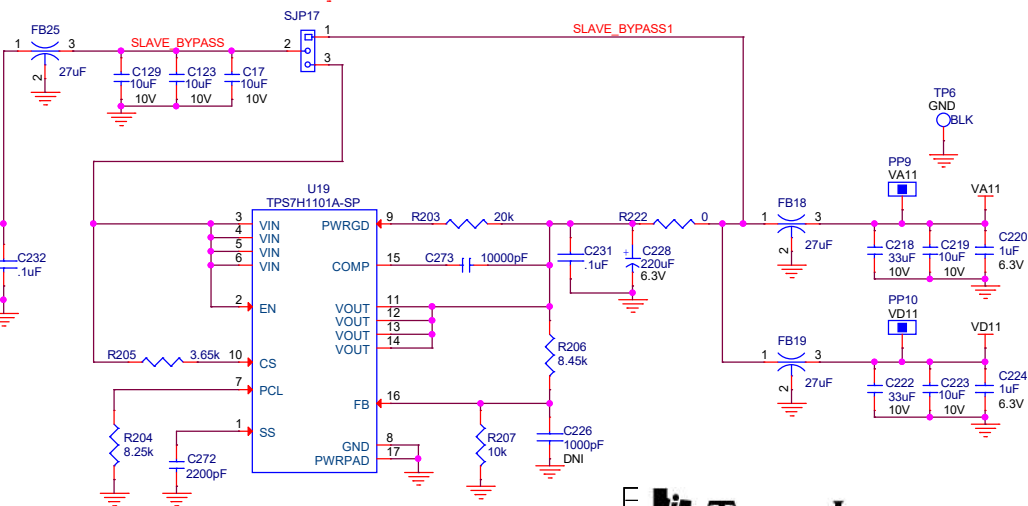
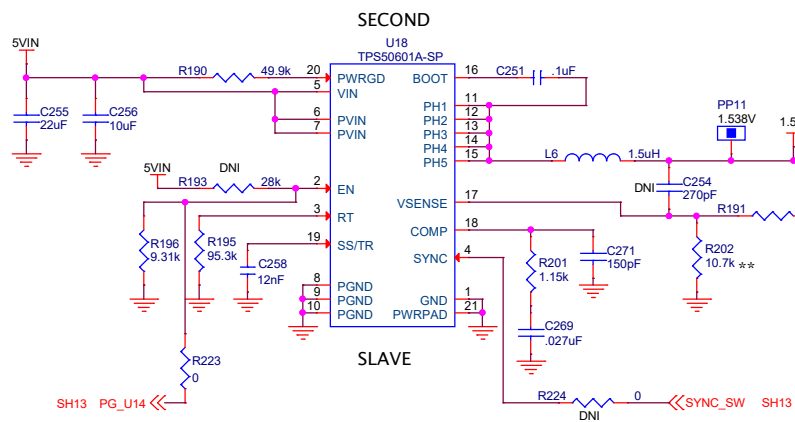
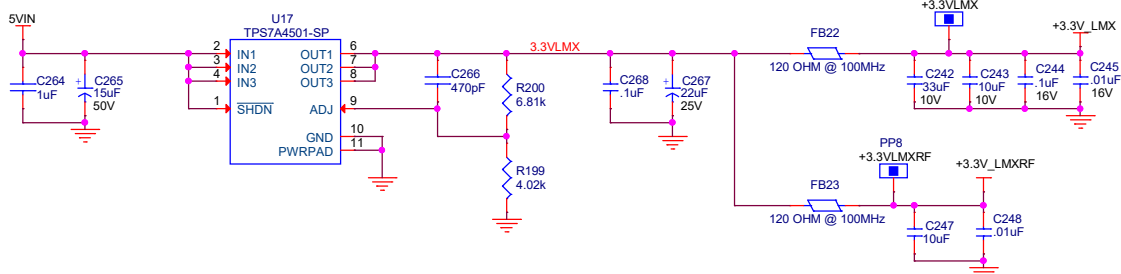
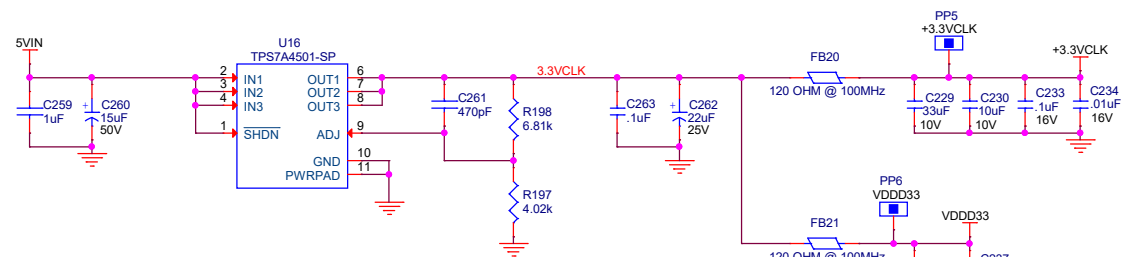
Size **B** Document Number **DC004** Rev **A**

Date: Wednesday, December 20, 2017 Sheet 12 of 15



\*\* R221 CHANGES TO 7.15k  
WHEN SWITCH PROVIDES 1.9V OUTPUT DIRECTLY.  
PANASONIC ERJ-6ENF7151V





\*\* R202 CHANGES TO 25.5k  
WHEN SWITCHER PROVIDES 1.1V OUTPUT DIRECTLY.  
PANASONIC ERJ-6ENF2552V



Title **ADC12DJ3200EVMVAL (Power)**

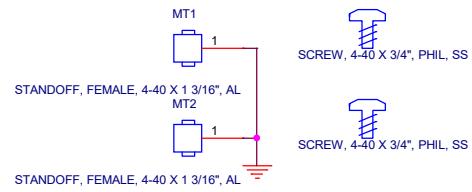
Size **B** Document Number **DC004** Rev **A**

Date: Wednesday, December 20, 2017 Sheet 14 of 15



PCB  
BARE BOARD, ADC12DJ3200EVMCVAL

#### MECHANICAL PARTS



Title		
ADC12DJ3200EVMCVAL (Hardware)		
Size	Document Number	Rev
B	DC004	A
Date:	Wednesday, December 20, 2017	Sheet 15 of 15