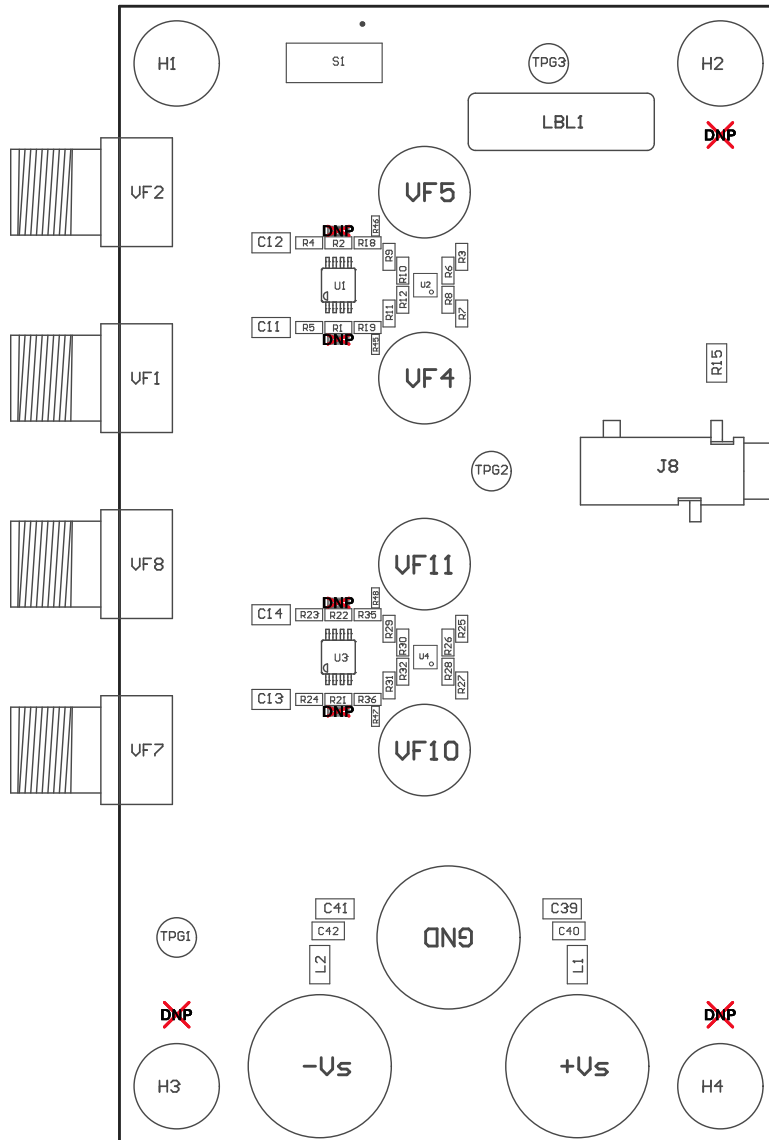
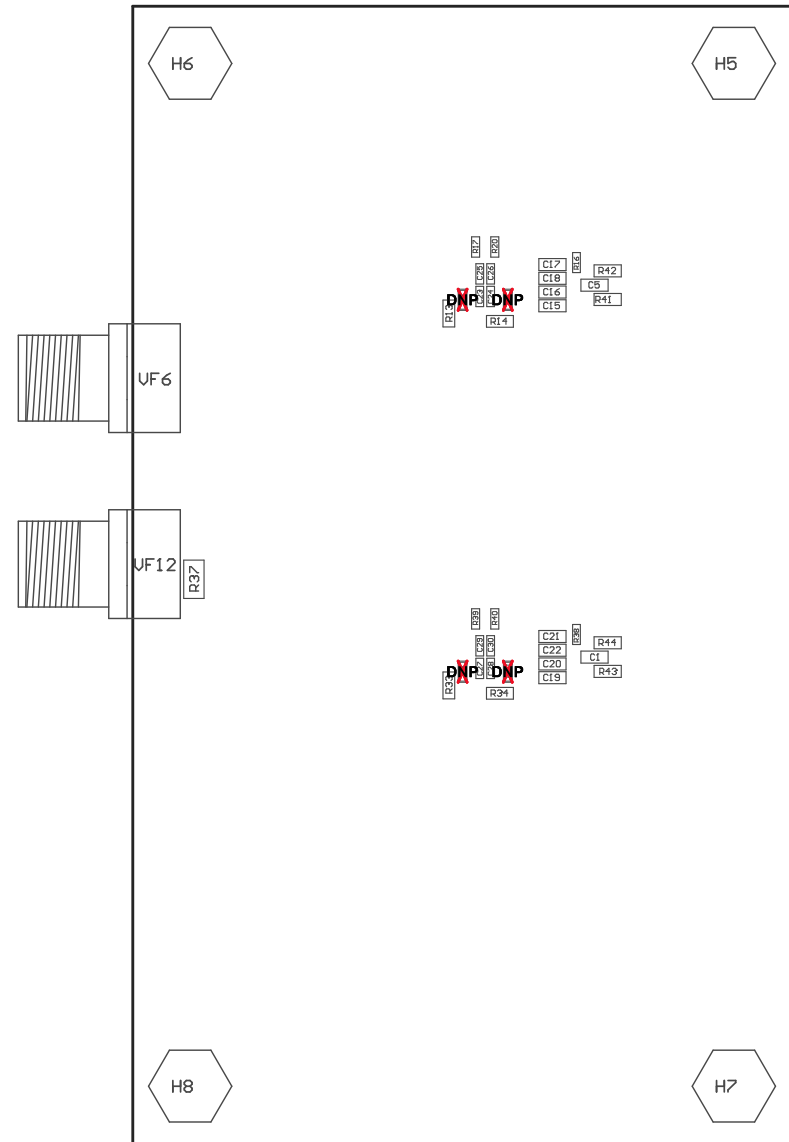


ZZ1 ■
ZZ2 ■ These assemblies are ESD sensitive, ESD precautions shall be observed.
ZZ3 ■ These assemblies must be clean and free from flux and all contaminants. Use of no clean flux is not acceptable.
ZZ4 ■ These assemblies must comply with workmanship standards IPC-A-610 Class 2, unless otherwise specified.



COMPONENTS MARKED 'DNP' SHOULD NOT BE POPULATED.
ASSEMBLY VARIANT: 001

PCB VIEWED FROM TOP SIDE	BOARD #: XX####	REV: E1	SUN REV: Not In VersionControl
IGNORE ->			
PLOT NAME = Top Assembly Drawing	GENERATED : 12/5/2014 1:24:44 PM	TEXAS INSTRUMENTS	



COMPONENTS MARKED 'DNP' SHOULD NOT BE POPULATED.
 ASSEMBLY VARIANT: 001

PCB VIEWED FROM BOTTOM SIDE	BOARD #: XX####	REV: E1	SUN REV: Not In VersionControl
	IGNORE ->		
PLOT NAME = Bottom Assembly Drawing	GENERATED : 12/5/2014 1:24:45 PM	TEXAS INSTRUMENTS	