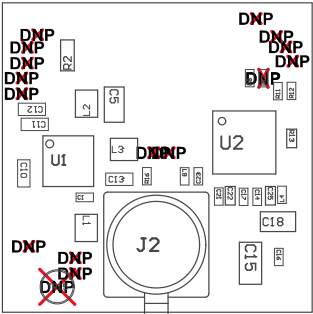


- ZZ1 ■ These assemblies are ESD sensitive, ESD precautions shall be observed.
- ZZ2 ■ These assemblies must be clean and free from flux and all contaminants. Use of no clean flux is not acceptable.
- ZZ3 ■ These assemblies must comply with workmanship standards IPC-A-610 Class 2, unless otherwise specified.



~~DNP~~

~~DNP~~

~~DNP~~

COMPONENTS MARKED 'DNP' SHOULD NOT BE POPULATED.

ASSEMBLY VARIANT: 001

PCB VIEWED FROM TOP SIDE	BOARD #: TIDA-050036	REV: E1	SUN REV: Not In VersionControl
	TID #: .TID		
PLOT NAME = Top Assembly Drawing	GENERATED : 11/26/2019 6:42:43 PM		TEXAS INSTRUMENTS

