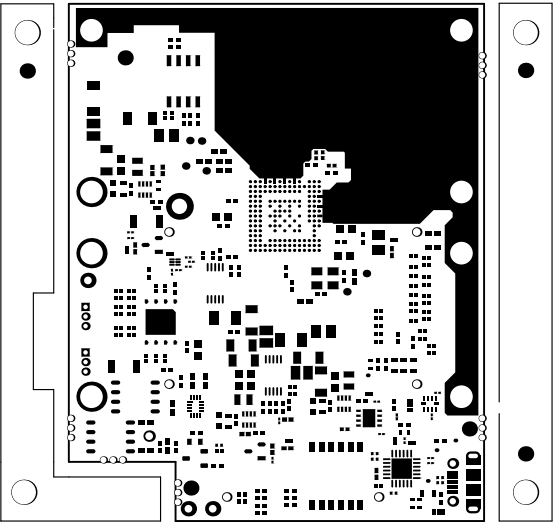
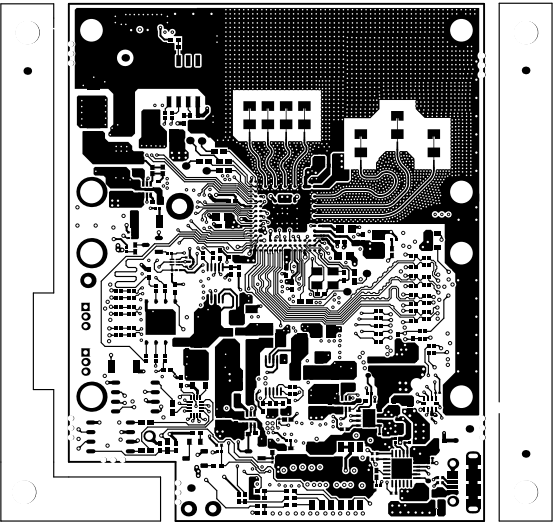


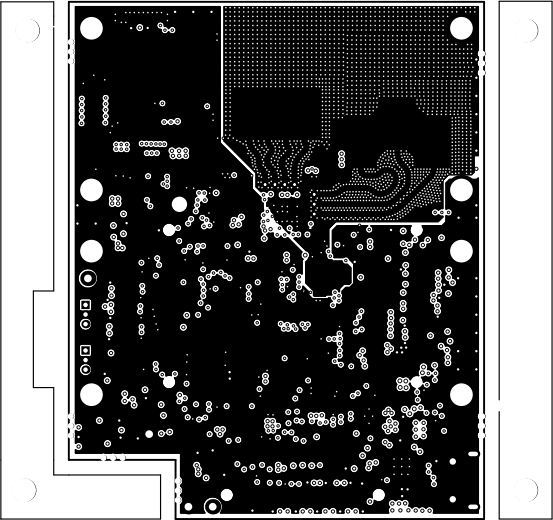
ALL ARTWORK VIEWED FROM TOP SIDE	BOARD #: PROC116	REV: A	SUN REV: Not In VersionControl
LAYER NAME = Top Overlay	TID #: N/A		
PLOT NAME = Top Overlay	GENERATED : 19-10-2021 18:53:47		TEXAS INSTRUMENTS



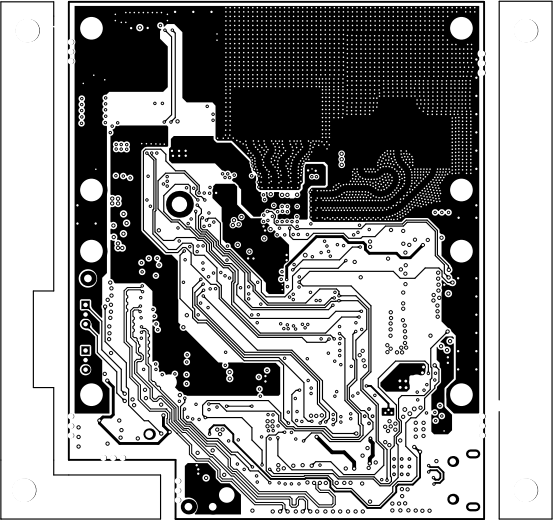
ALL ARTWORK VIEWED FROM TOP SIDE	BOARD #: PROC116	REV: A	SUN REV: Not In VersionControl
LAYER NAME = Top Solder	TID #: N/A		
PLOT NAME = Top Solder Mask	GENERATED : 19-10-2021 18:53:47		TEXAS INSTRUMENTS



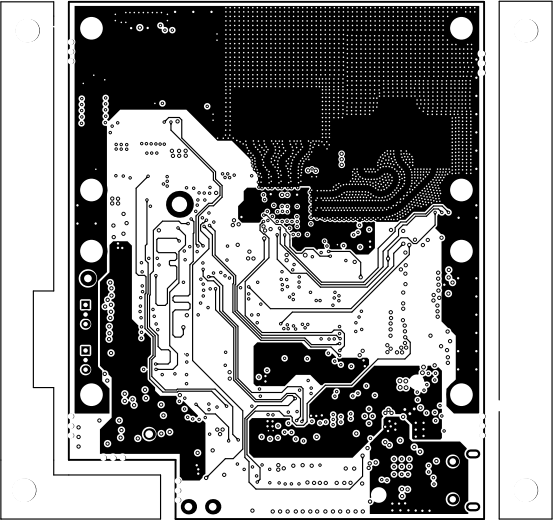
ALL ARTWORK VIEWED FROM TOP SIDE	BOARD #: PROC116	REV: A	SUN REV: Not In VersionControl
LAYER NAME = Top Layer	TID #: N/A		
PLOT NAME = Top Layer	GENERATED : 19-10-2021 18:53:47		TEXAS INSTRUMENTS



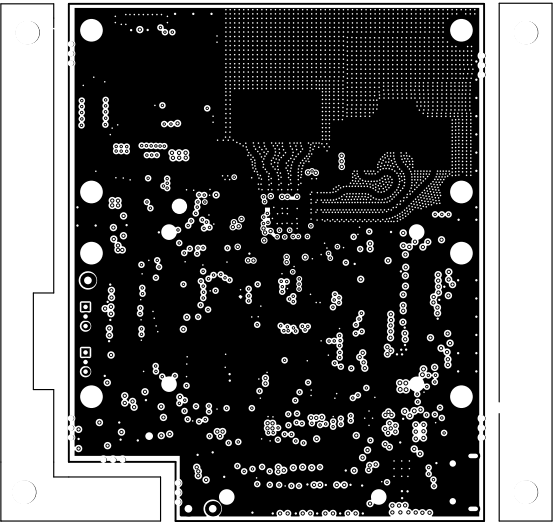
ALL ARTWORK VIEWED FROM TOP SIDE	BOARD #: PROC116	REV: A	SUN REV: Not In VersionControl
LAYER NAME = L2_GND	TID #: N/A		
PLOT NAME = Signal Layer 1	GENERATED : 19-10-2021 18:53:47		TEXAS INSTRUMENTS



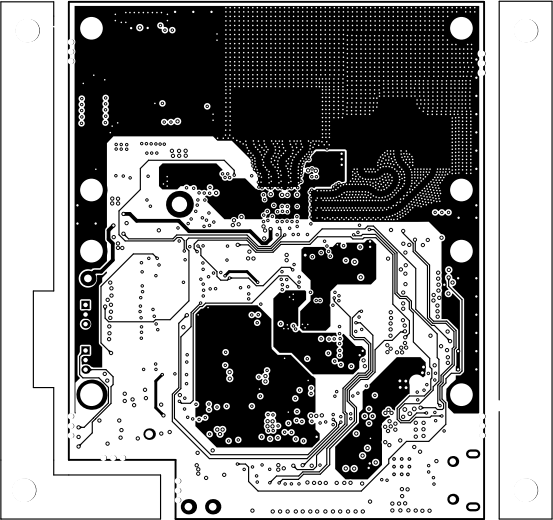
ALL ARTWORK VIEWED FROM TOP SIDE	BOARD #: PROC116	REV: A	SUN REV: Not In VersionControl
LAYER NAME = L3_SIGNAL 1	TID #: N/A		
PLOT NAME = Signal Layer 2	GENERATED : 19-10-2021 18:53:47		TEXAS INSTRUMENTS



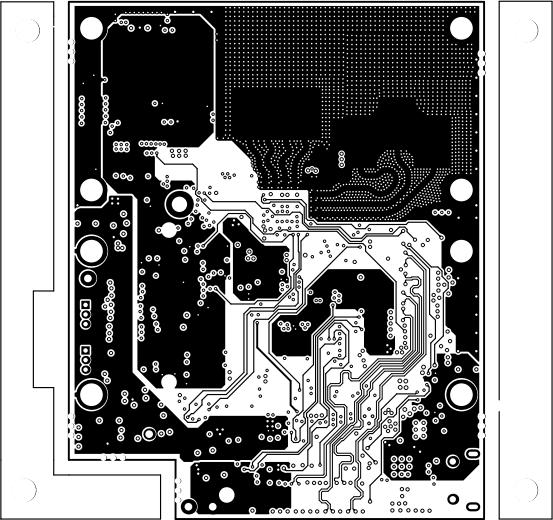
ALL ARTWORK VIEWED FROM TOP SIDE	BOARD #: PROC116	REV: A	SUN REV: Not In VersionControl
LAYER NAME = L5_SIGNAL 3	TID #: N/A		
PLOT NAME = Signal Layer 3	GENERATED : 19-10-2021 18:53:48		TEXAS INSTRUMENTS



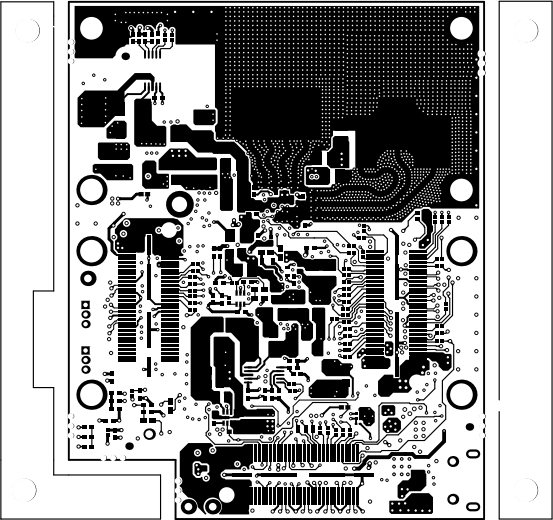
ALL ARTWORK VIEWED FROM TOP SIDE	BOARD #: PROC116	REV: A	SUN REV: Not In VersionControl
LAYER NAME = L7_GND	TID #: N/A		
PLOT NAME = Signal Layer 4	GENERATED : 19-10-2021 18:53:48		TEXAS INSTRUMENTS



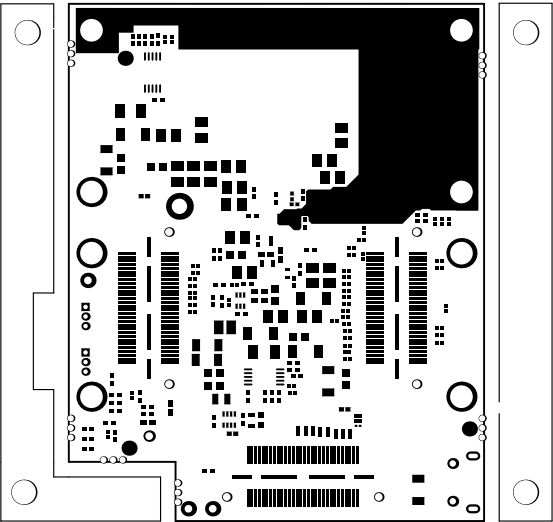
ALL ARTWORK VIEWED FROM TOP SIDE	BOARD #: PROC116	REV: A	SUN REV: Not In VersionControl
LAYER NAME = L4_SIGNAL 2	TID #: N/A		
PLOT NAME = Signal Layer 5	GENERATED : 19-10-2021 18:53:48		TEXAS INSTRUMENTS



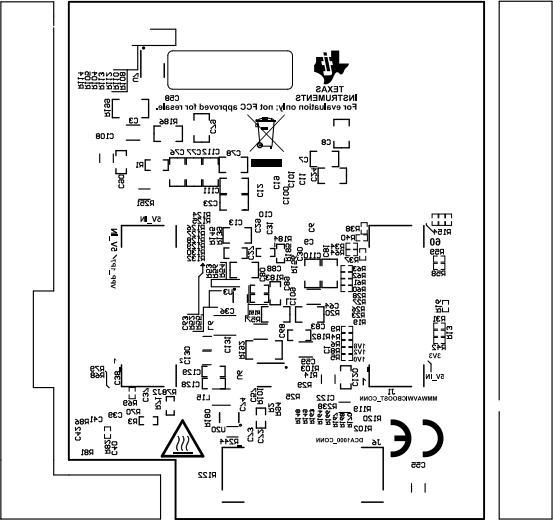
ALL ARTWORK VIEWED FROM TOP SIDE	BOARD #: PROC116	REV: A	SUN REV: Not In VersionControl
LAYER NAME = L6_SIGNAL 4	TID #: N/A		
PLOT NAME = Signal Layer 6	GENERATED : 19-10-2021 18:53:48		TEXAS INSTRUMENTS



ALL ARTWORK VIEWED FROM TOP SIDE	BOARD #: PROC116	REV: A	SUN REV: Not In VersionControl
LAYER NAME = Bottom Layer	TID #: N/A		
PLOT NAME = Bottom Layer	GENERATED : 19-10-2021 18:53:48		TEXAS INSTRUMENTS



ALL ARTWORK VIEWED FROM TOP SIDE	BOARD #: PROC116	REV: A	SUN REV: Not In VersionControl
LAYER NAME = Bottom Solder	TID #: N/A		
PLOT NAME = Bottom Solder Mask	GENERATED : 19-10-2021 18:53:48		TEXAS INSTRUMENTS

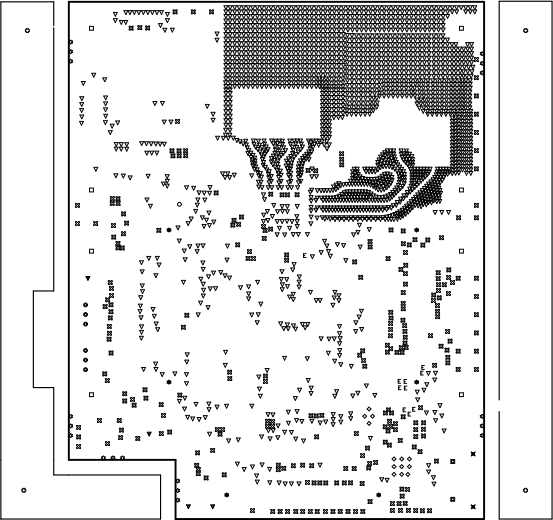


ALL ARTWORK VIEWED FROM TOP SIDE	BOARD #: PROC116	REV: A	SUN REV: Not In VersionControl
LAYER NAME = Bottom Overlay	TID #: N/A		
PLOT NAME = Bottom Overlay	GENERATED : 19-10-2021 18:53:48		TEXAS INSTRUMENTS

Drill Table: Top Layer to Bottom Layer

	Symbol	Count	Hole Size	Plated	Hole Type	Drill Layer Pair	Hole Tolerance (+)	Hole Tolerance (-)	Hole Length	Routed Path Length
8	◇	13	7.87mil <0.200mm>	PTH	Round	Top Layer - Bottom Layer	3.00mil <0.076mm>	3.00mil <0.076mm>	-	-
8	▽	2365	8.00mil <0.203mm>	PTH	Round	Top Layer - Bottom Layer	3.00mil <0.076mm>	3.00mil <0.076mm>	-	-
8	⊠	267	12.20mil <0.310mm>	PTH	Round	Top Layer - Bottom Layer	3.00mil <0.076mm>	3.00mil <0.076mm>	-	-
8	E	10	15.00mil <0.381mm>	PTH	Round	Top Layer - Bottom Layer	0.00mil <0.000mm>	15.00mil <0.381mm>	-	-
	⊙	6	23.62mil <0.600mm>	PTH	Round	Top Layer - Bottom Layer	3.00mil <0.076mm>	3.00mil <0.076mm>	-	-
	✕	2	23.62mil <0.600mm>	PTH	Slot	Top Layer - Bottom Layer	3.00mil <0.076mm>	3.00mil <0.076mm>	51.18mil <1.300mm>	27.56mil <0.700mm>
	▣	2	33.47mil <0.850mm>	PTH	Round	Top Layer - Bottom Layer	3.00mil <0.076mm>	3.00mil <0.076mm>	-	-
	▼	4	40.00mil <1.016mm>	PTH	Round	Top Layer - Bottom Layer	3.00mil <0.076mm>	3.00mil <0.076mm>	-	-
	○	1	80.00mil <2.032mm>	PTH	Round	Top Layer - Bottom Layer	3.00mil <0.076mm>	3.00mil <0.076mm>	-	-
	□	8	118.11mil <3.000mm>	PTH	Round	Top Layer - Bottom Layer	3.00mil <0.076mm>	3.00mil <0.076mm>	-	-
	☆	18	32.00mil <0.813mm>	NPTH	Round	Top Layer - Bottom Layer	3.00mil <0.076mm>	3.00mil <0.076mm>	-	-
	✳	6	40.16mil <1.020mm>	NPTH	Round	Top Layer - Bottom Layer	2.00mil <0.051mm>	2.00mil <0.051mm>	-	-
	⊕	4	126.00mil <3.200mm>	NPTH	Round	Top Layer - Bottom Layer	3.00mil <0.076mm>	3.00mil <0.076mm>	-	-
		2706 Total								

Slot definitions : Routed Path Length = Calculated from tool start centre position to tool end centre position.  
Hole Length = Routed Path Length + Tool Size = Slot length as defined in the PCB layout



ALL ARTWORK VIEWED FROM TOP SIDE	BOARD #: PROC116	REV: A	SUN REV: Not In VersionControl
LAYER NAME = Drill Drawing	TID #: N/A		
PLOT NAME = Drill Drawing	GENERATED : 19-10-2021 18:53:48		TEXAS INSTRUMENTS

Drill Table: Top Layer to Bottom Layer

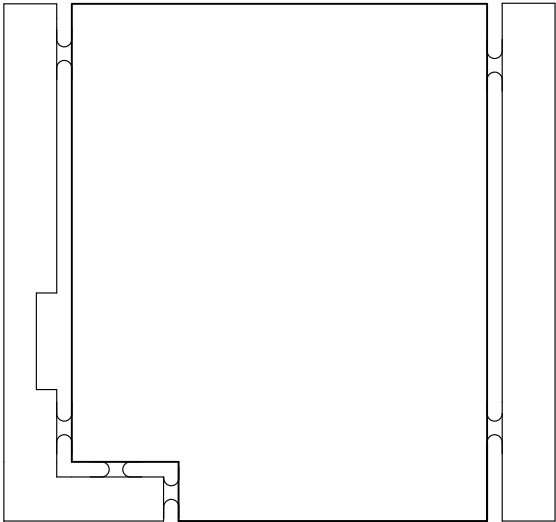
8

8

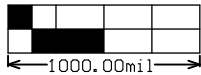
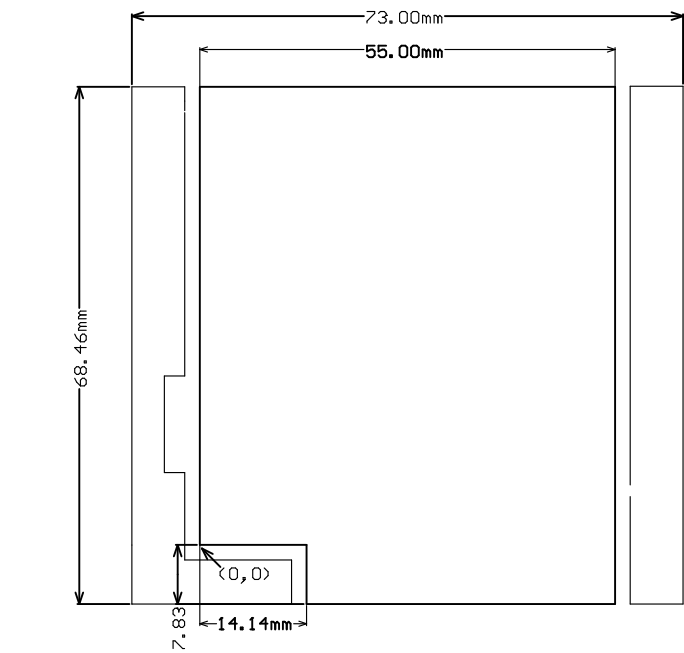
8

8

Symbol	Count	Hole Size	Plated	Hole Type	Drill Layer Pair	Hole Tolerance (+)	Hole Tolerance (-)	Hole Length	Routed Path Length



ALL ARTWORK VIEWED FROM TOP SIDE	BOARD #: PROC116	REV: A	SUN REV: Not In VersionControl
LAYER NAME = <del>Drill Drawing</del> <b>Drill Drawing</b>	TID #: N/A		
PLOT NAME = Drill Drawing	GENERATED : 19-10-2021 18:53:51		TEXAS INSTRUMENTS



ALL ARTWORK VIEWED FROM TOP SIDE	BOARD #: PROC116	REV: A	SUN REV: Not In VersionControl
LAYER NAME = M2 Board Dimensions	TID #: N/A		
PLOT NAME = Board Dimensions	GENERATED : 19-10-2021 18:53:52		TEXAS INSTRUMENTS