

B3

P1 Jumper settings

1-2 = Battery

3-4 = EXT VDD

Debug Connector

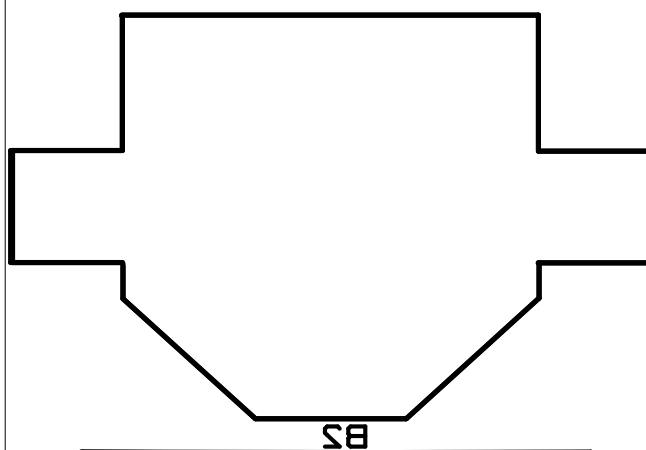
1 GND 2 VDD

3 P2.2/DC 4 P2.1/DD

5 P0.4/SSN 6 P0.5/SCK

7 RESET_N 8 P0.3/MOSI

9 VDD_EXT 10 P0.2/MISO



SB

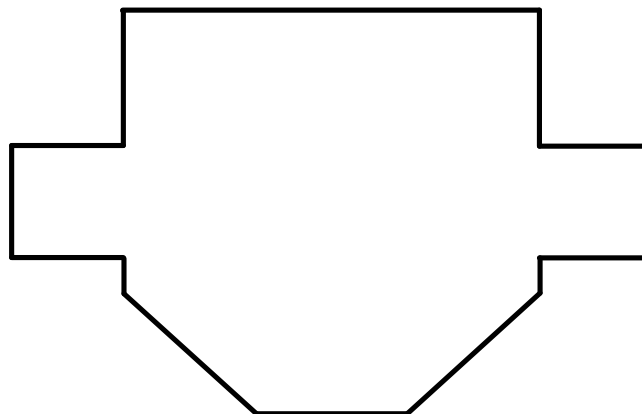
|

+

SB

P1 Jumper settings
1-2 = Battery
3-4 = EXT VDD

Debug Connector
1 GND 2 VDD
3 P2.2/DC 4 P2.1/DD
5 P0.4/SSN 6 P0.5/SCK
7 RESET_N 8 P0.3/MOSI
9 VDD_EXT 10 P0.2/MISO

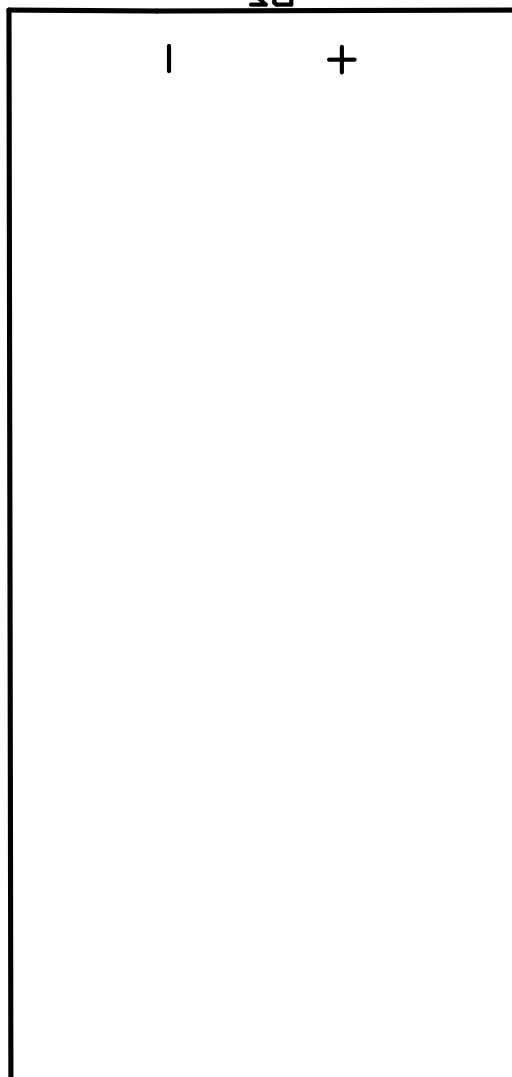


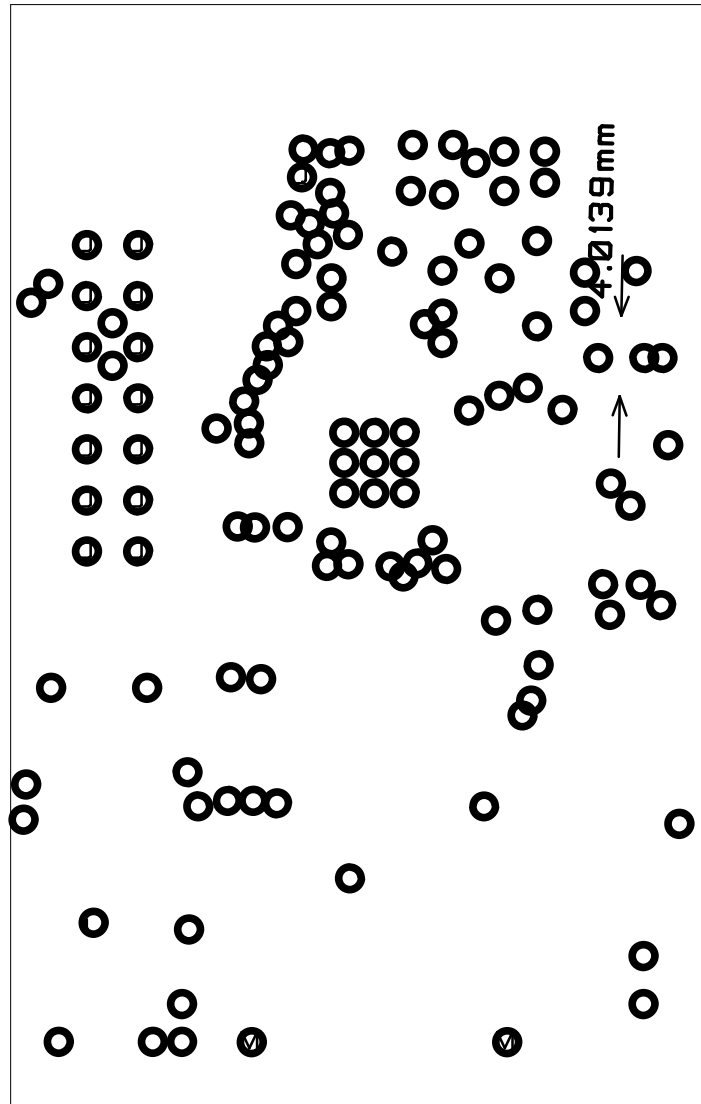
SB

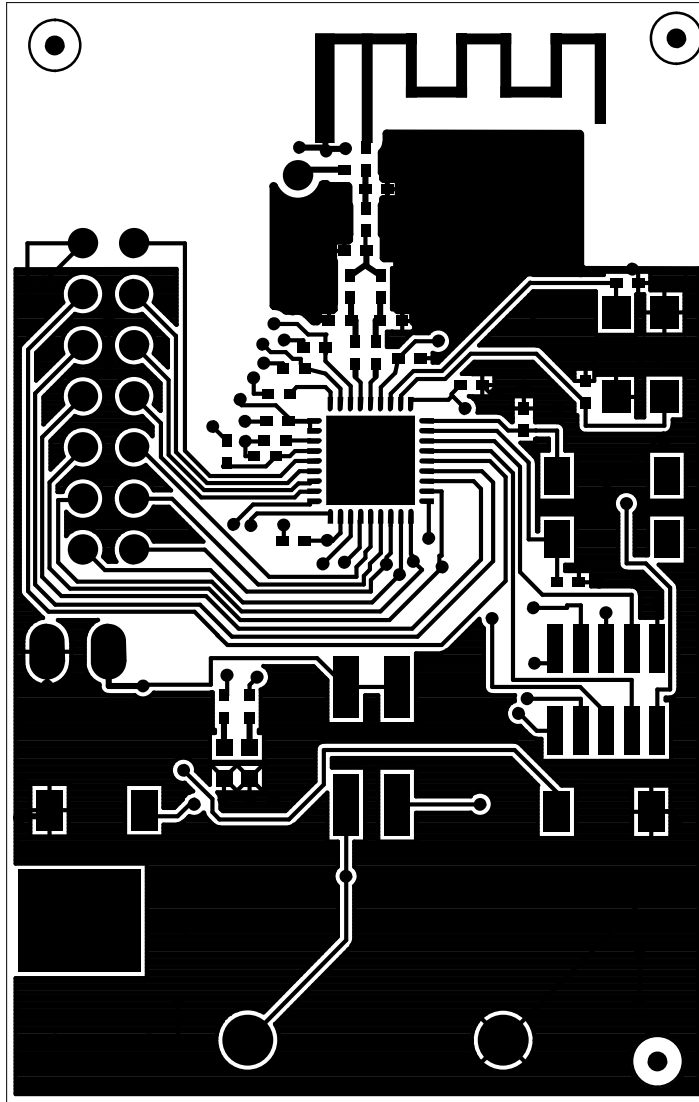
|

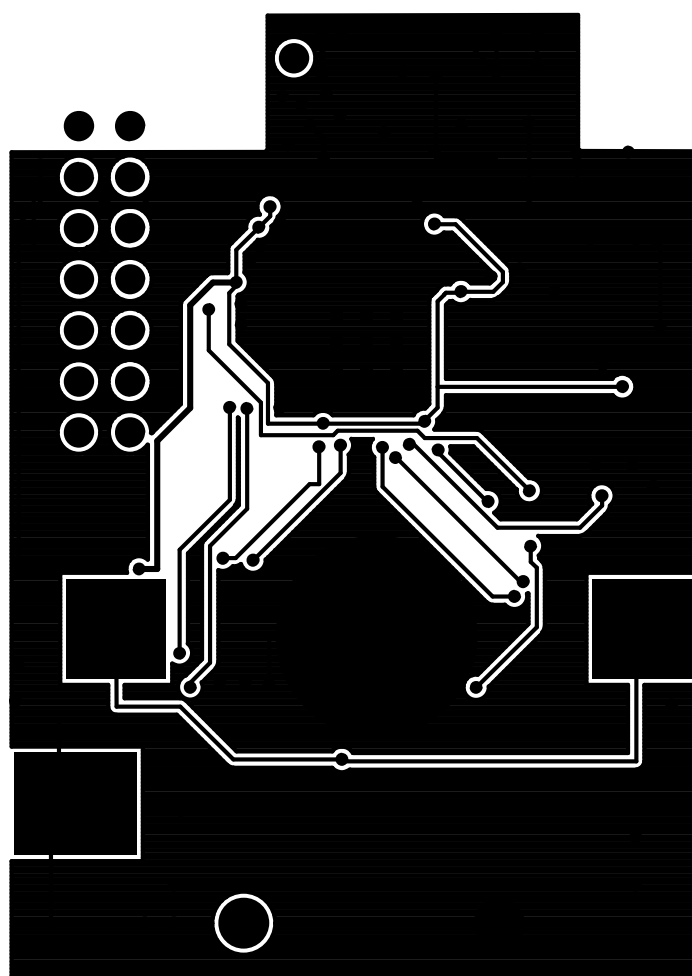
+

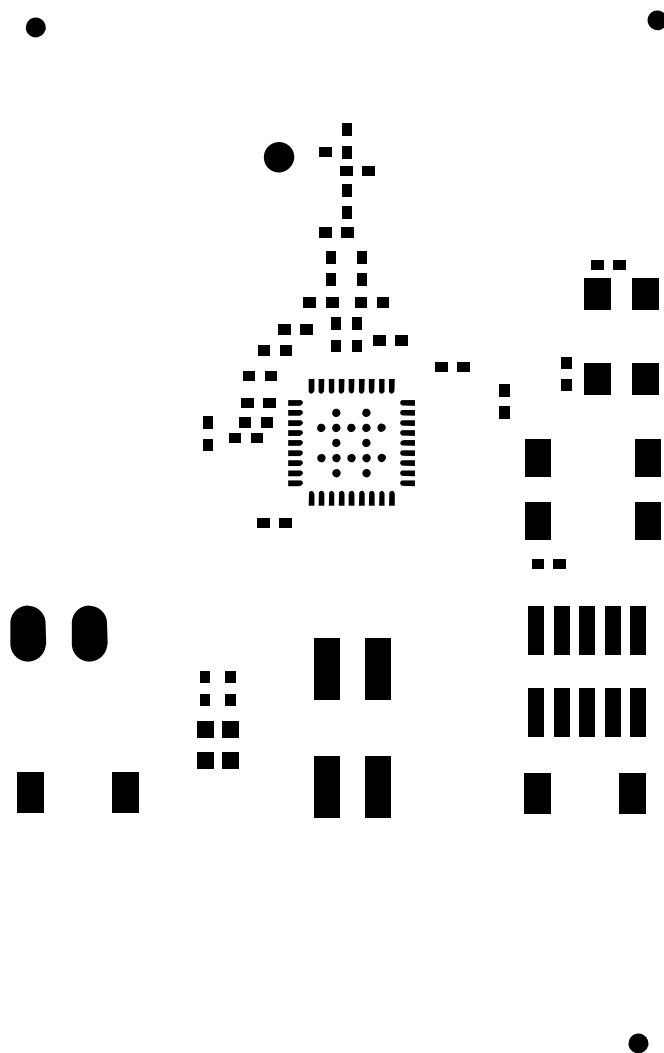
SB

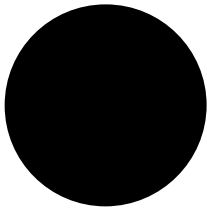


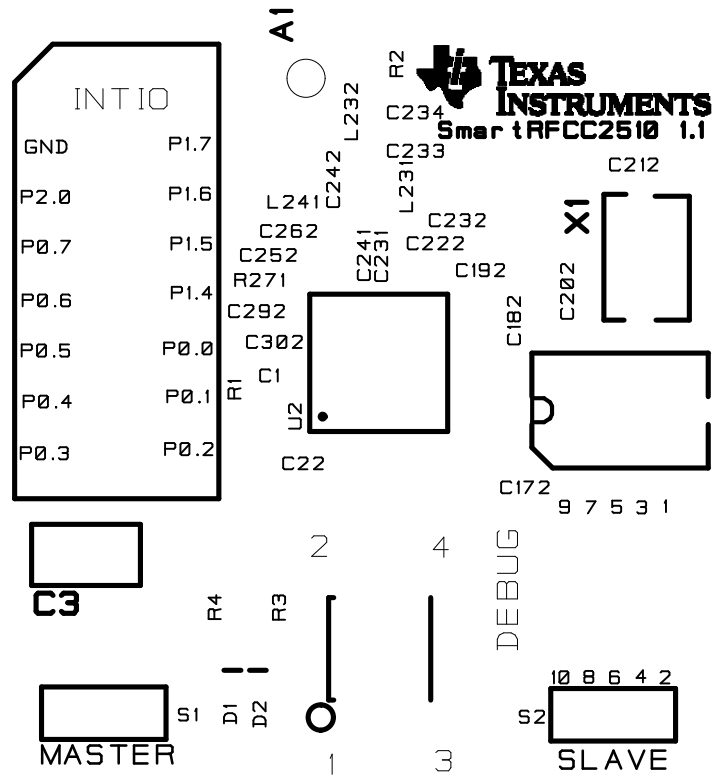












TP2

9 VDD_EXT 10 P0.2\MISO
7 RESET_N 8 P0.3\MOSI
2 P0.4\2SN 6 P0.2\2CK
3 P2.2\DC 4 P2.1\DD
1 GND 2 VDD
Debug Connector
3-4 = EXT VDD
1-2 = Battery
P1 Jumper settings

