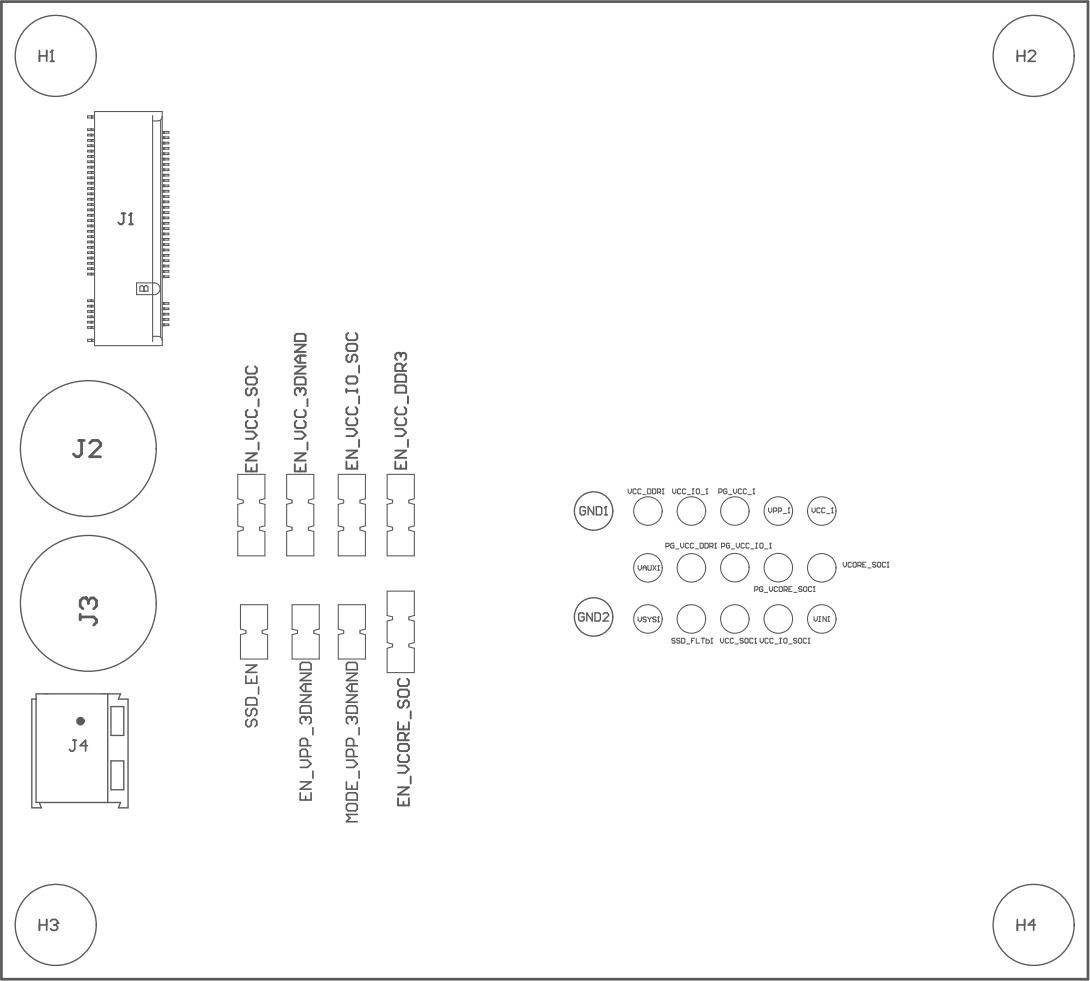
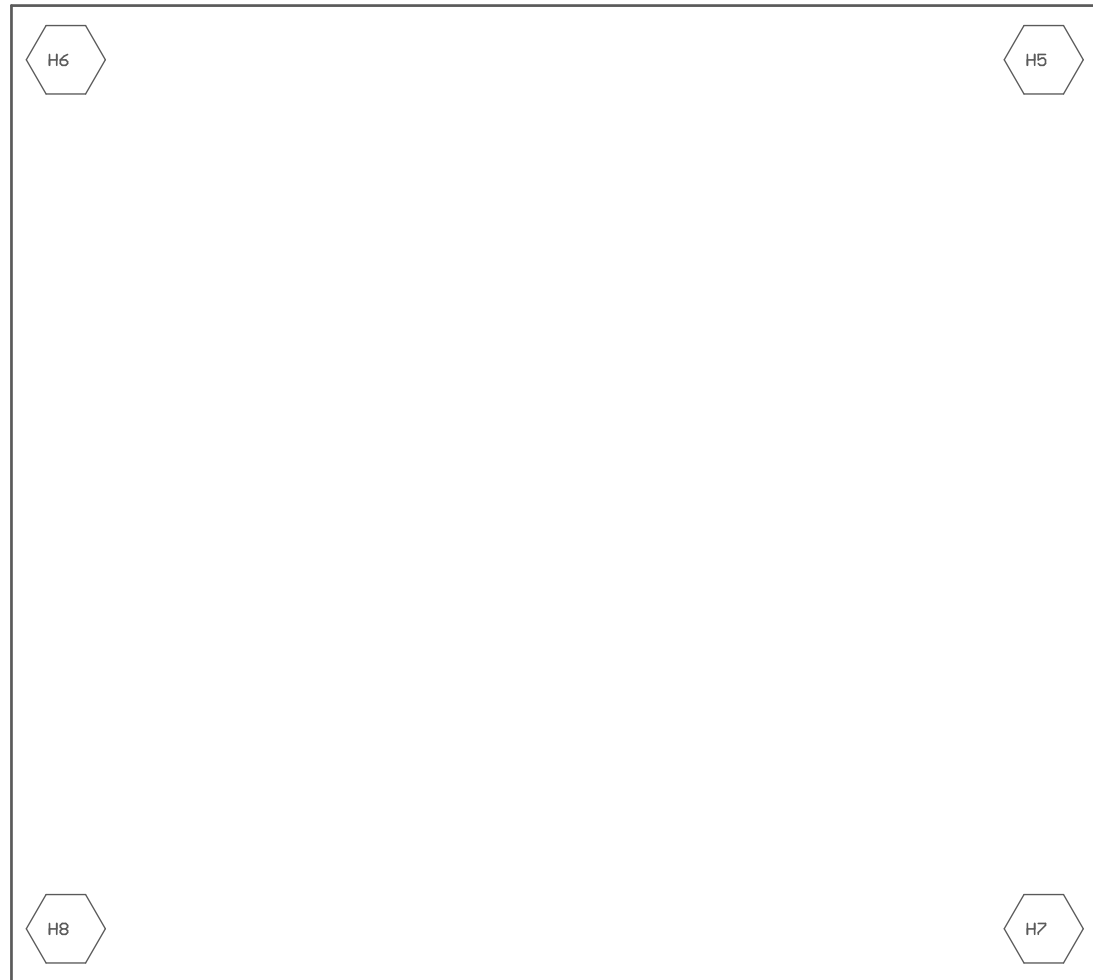


Z21 ■Install label in silkscreened box after final wash. Text shall be 8 pt font. Text shall be per the Label Table in the PDF schematic.
Z22 ■These assemblies are ESD sensitive, ESD precautions shall be observed.
Z23 ■These assemblies must be clean and free from flux and all contaminants. Use of no clean flux is not acceptable.
Z24 ■These assemblies must comply with workmanship standards IPC-A-610 Class 2, unless otherwise specified.



COMPONENTS MARKED 'DNP' SHOULD NOT BE POPULATED.
ASSEMBLY VARIANT: 001

| | | | |
|----------------------------------|----------------------------------|---------|--------------------------------|
| PCB VIEWED FROM TOP SIDE | BOARD #: TIDA-050028 | REV: E1 | SUN REV: Not In VersionControl |
| M5 Assembly Top | TID #: TIDA-050028 | | |
| PLOT NAME = Top Assembly Drawing | GENERATED : 4/24/2019 2:36:27 PM | | TEXAS INSTRUMENTS |



COMPONENTS MARKED 'DNP' SHOULD NOT BE POPULATED.
ASSEMBLY VARIANT: 001

| | | | |
|-------------------------------------|----------------------------------|---------|--------------------------------|
| PCB VIEWED FROM BOTTOM SIDE | BOARD #: TIDA-050028 | REV: E1 | SVN REV: Not In VersionControl |
| M6 Assembly Bottom | TID #: TIDA-050028 | | |
| PLOT NAME = Bottom Assembly Drawing | GENERATED : 4/24/2019 2:36:28 PM | | TEXAS INSTRUMENTS |