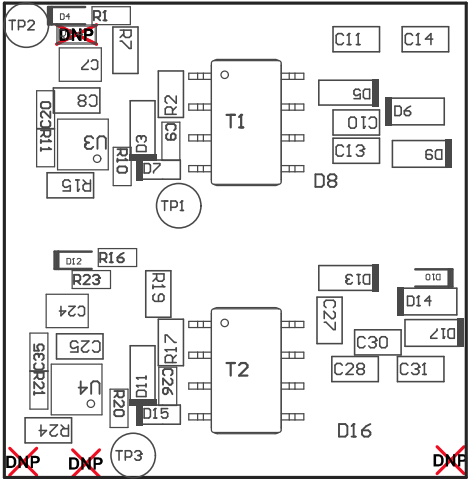
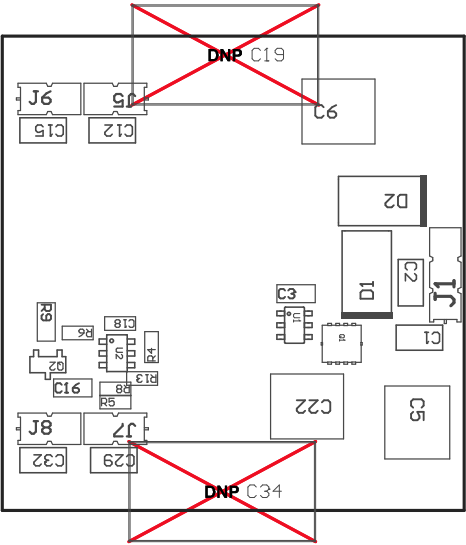


- ZZ1 ■ These assemblies are ESD sensitive, ESD precautions shall be observed.
- ZZ2 ■ These assemblies must be clean and free from flux and all contaminants. Use of no clean flux is not acceptable.
- ZZ3 ■ These assemblies must comply with workmanship standards IPC-A-610 Class 2, unless otherwise specified.



COMPONENTS MARKED 'DNP' SHOULD NOT BE POPULATED.
ASSEMBLY VARIANT: 001

PCB VIEWED FROM TOP SIDE	BOARD #: TIDA-020014	REV: E1	SUN REV: Not In VersionControl
	TID #:		
PLOT NAME = Top Assembly Drawing	GENERATED : 4/2/2019	9:07:43 AM	TEXAS INSTRUMENTS



COMPONENTS MARKED 'DNP' SHOULD NOT BE POPULATED.
ASSEMBLY VARIANT: 001

PCB VIEWED FROM BOTTOM SIDE	BOARD #: TIDA-020014	REV: E1	SVN REV: Not In VersionControl
	TID #:		
PLOT NAME = Bottom Assembly Drawing	GENERATED : 4/2/2019	9:07:45 AM	TEXAS INSTRUMENTS