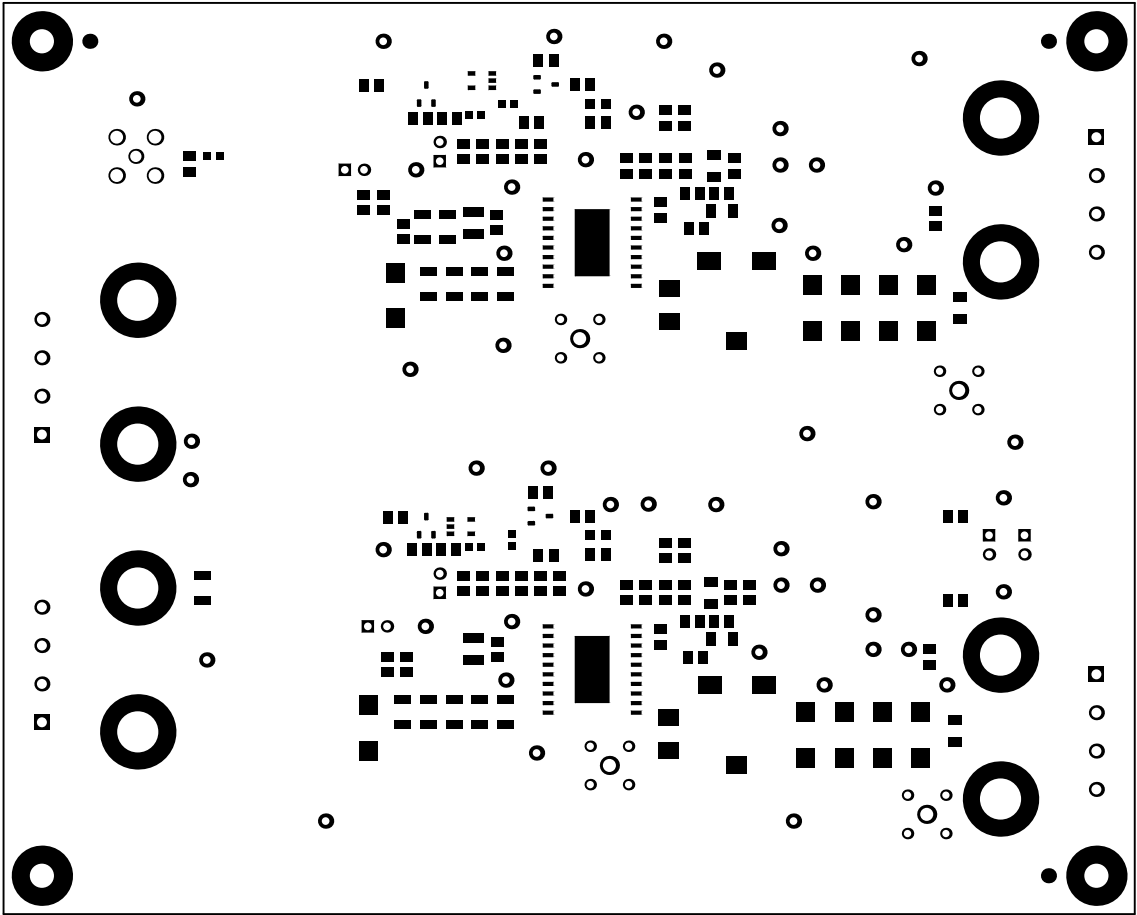
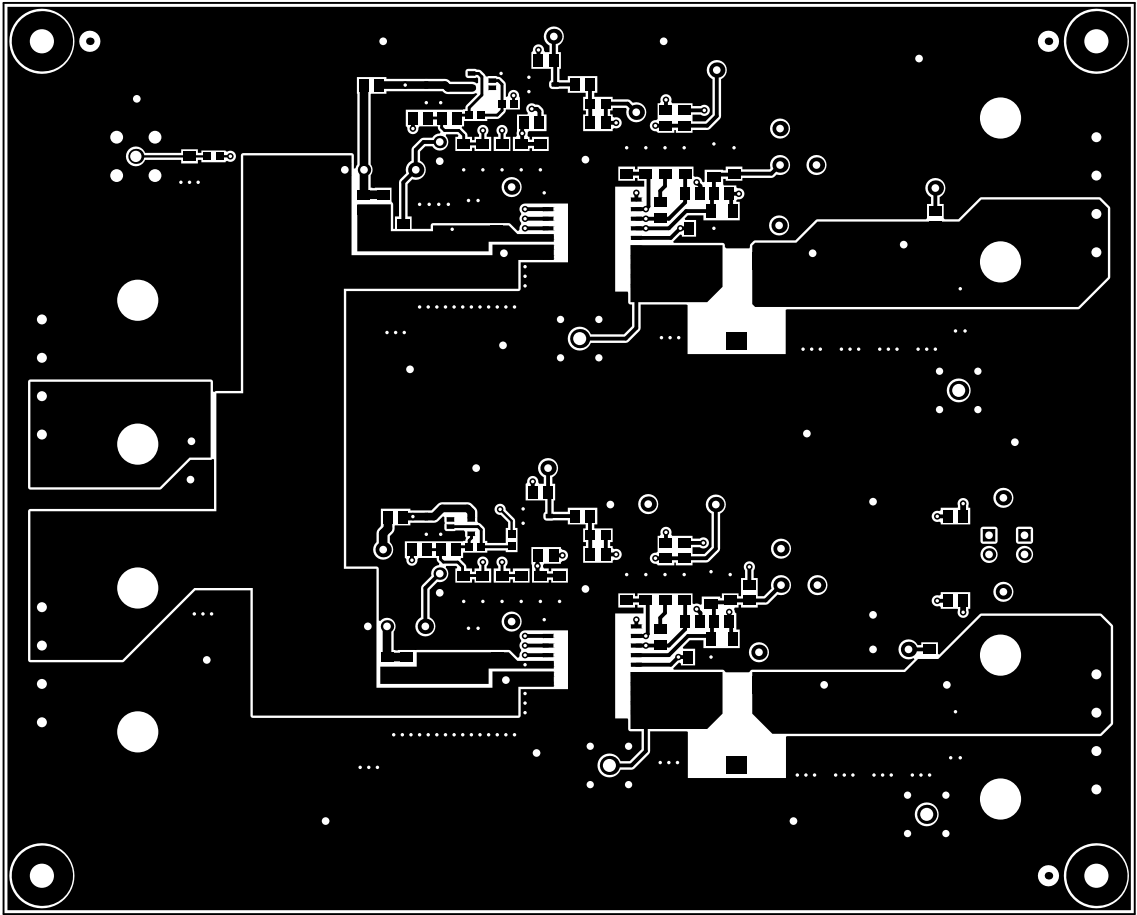


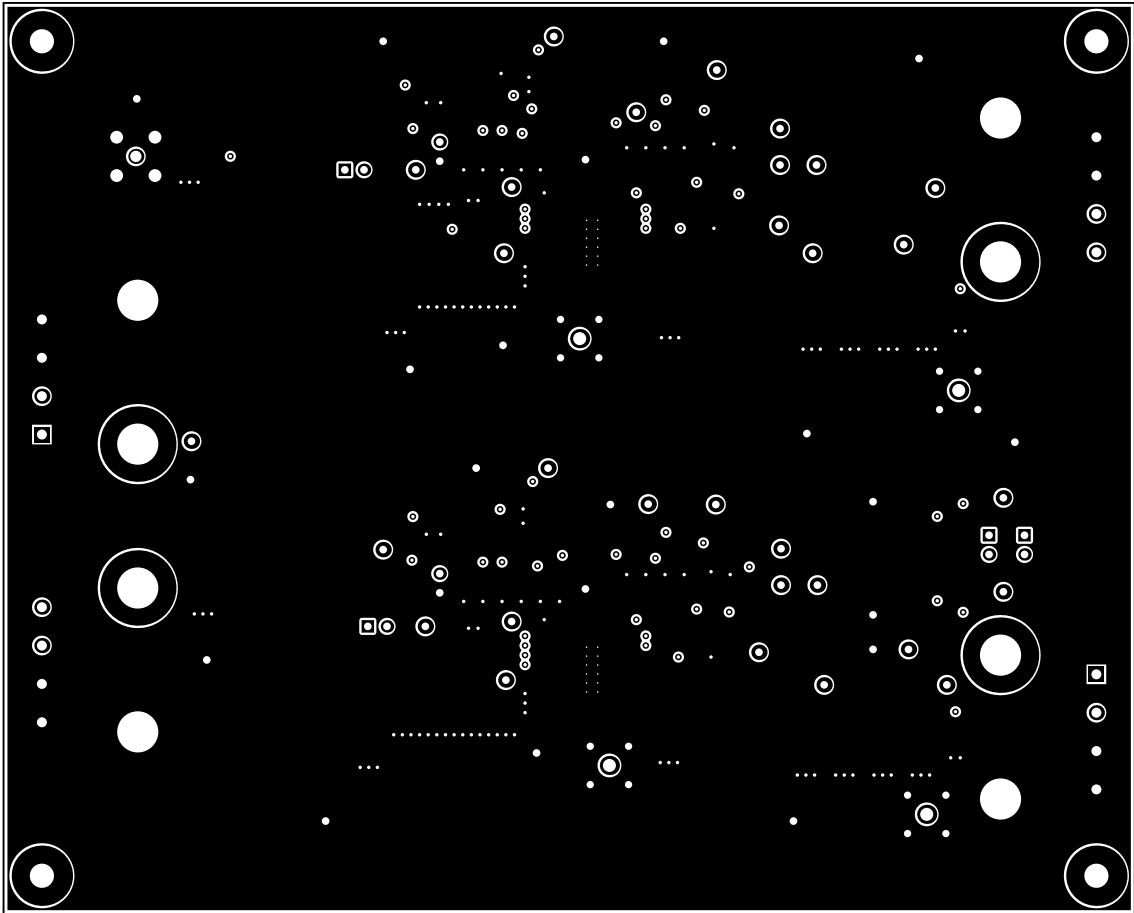
ALL ARTWORK VIEWED FROM TOP SIDE	BOARD #: SLHR003	REV: C	SUN REV: Not In VersionControl
LAYER NAME = Top Overlay	TID #: N/A		
	GENERATED : 11/30/2018 1:33:58 PM	TEXAS INSTRUMENTS	



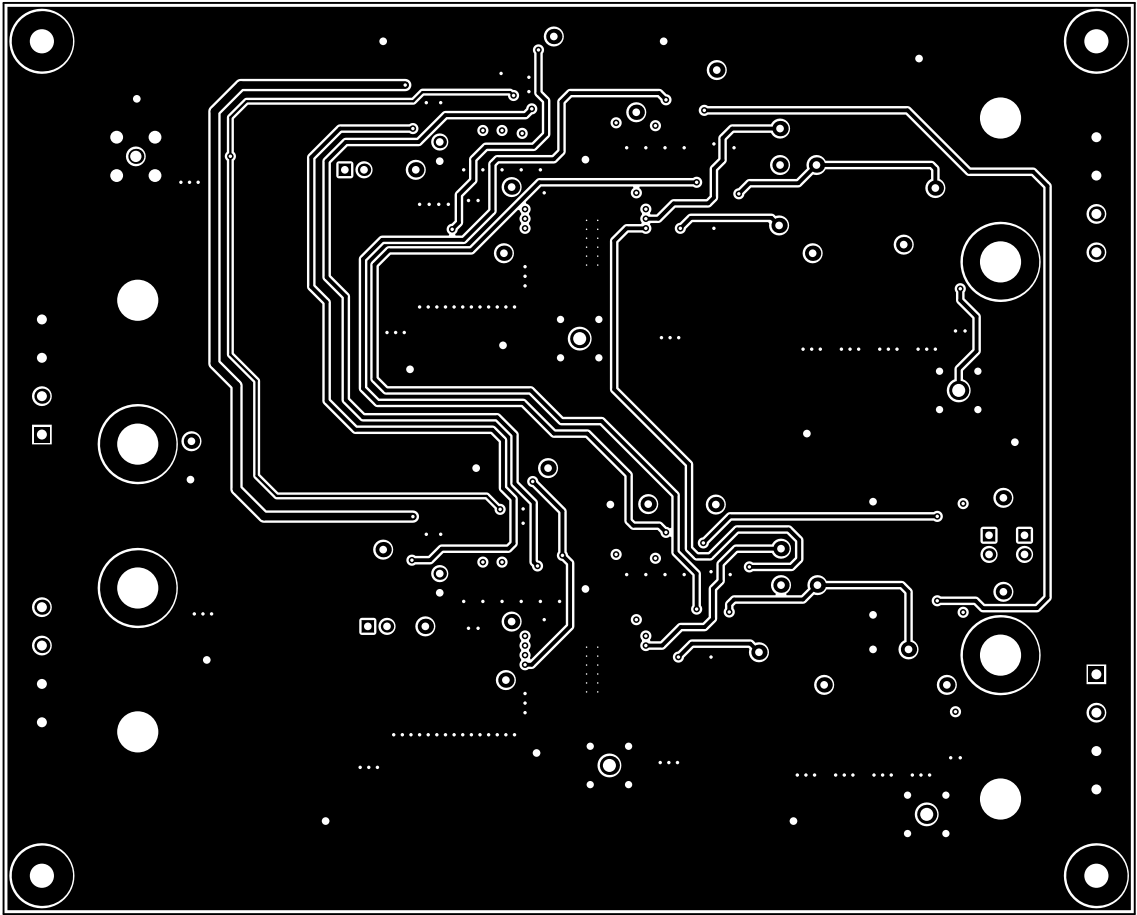
ALL ARTWORK VIEWED FROM TOP SIDE	BOARD #: SLHR003	REV: C	SUN REV: Not In VersionControl
LAYER NAME = Top Solder	TID #: N/A		
	GENERATED : 11/30/2018 1:34:00 PM		TEXAS INSTRUMENTS



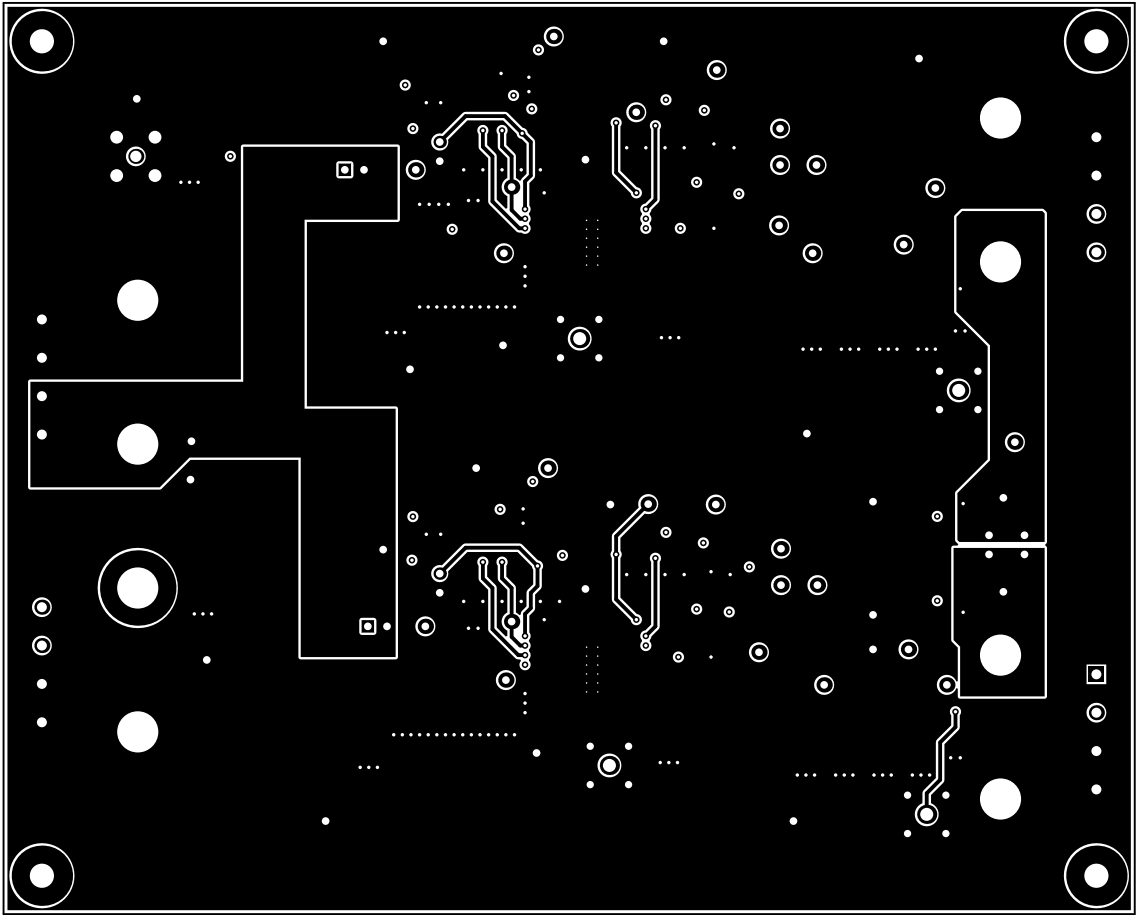
ALL ARTWORK VIEWED FROM TOP SIDE	BOARD #: SLHR003	REV: C	SUN REV: Not In VersionControl
LAYER NAME = Layer 1 - Top Layer	TID #: N/A		
	GENERATED : 11/30/2018 1:34:02 PM	TEXAS INSTRUMENTS	



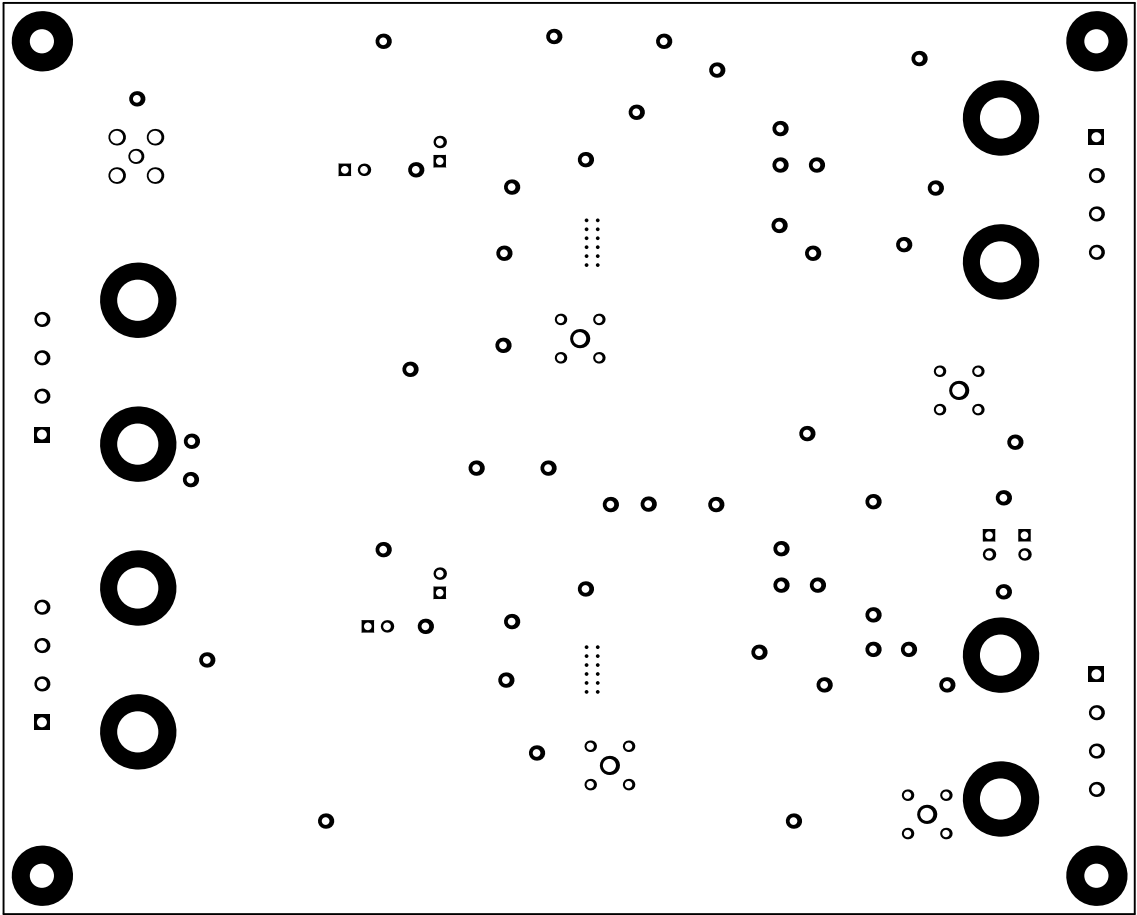
ALL ARTWORK VIEWED FROM TOP SIDE	BOARD #: SLHR003	REV: C	SUN REV: Not In VersionControl
LAYER NAME = Layer 2 - GND	TID #: N/A		
	GENERATED : 11/30/2018 1:34:03 PM	TEXAS INSTRUMENTS	



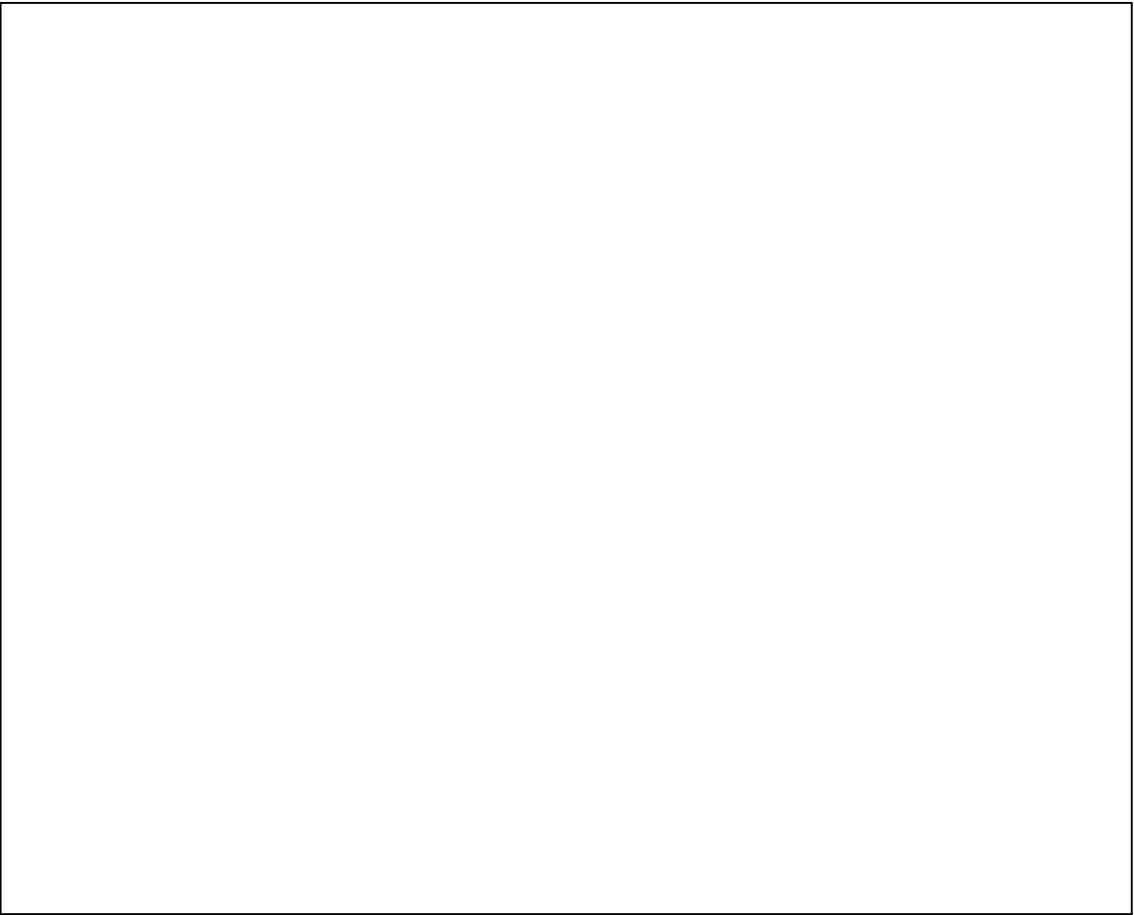
ALL ARTWORK VIEWED FROM TOP SIDE	BOARD #: SLHR003	REV: C	SUN REV: Not In VersionControl
LAYER NAME = Layer 3 - Signal	TID #: N/A		
	GENERATED : 11/30/2018 1:34:05 PM	TEXAS INSTRUMENTS	



ALL ARTWORK VIEWED FROM TOP SIDE	BOARD #: SLHR003	REV: C	SUN REV: Not In VersionControl
LAYER NAME = Layer 4 - Bottom Layer	TID #: N/A		
	GENERATED : 11/30/2018 1:34:06 PM	TEXAS INSTRUMENTS	



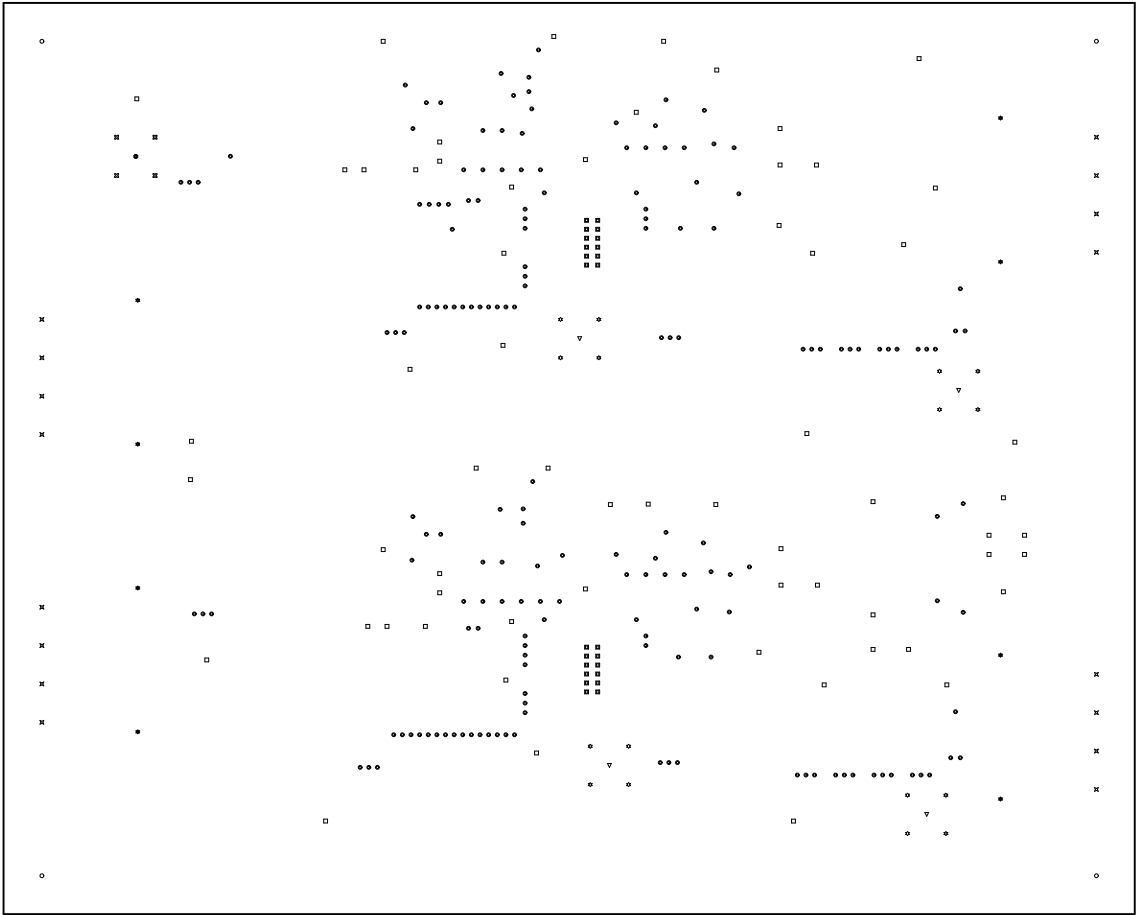
ALL ARTWORK VIEWED FROM TOP SIDE	BOARD #: SLHR003	REV: C	SUN REV: Not In VersionControl
LAYER NAME = Bottom Solder	TID #: N/A		
	GENERATED : 11/30/2018 1:34:08 PM		TEXAS INSTRUMENTS



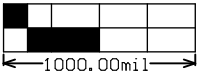
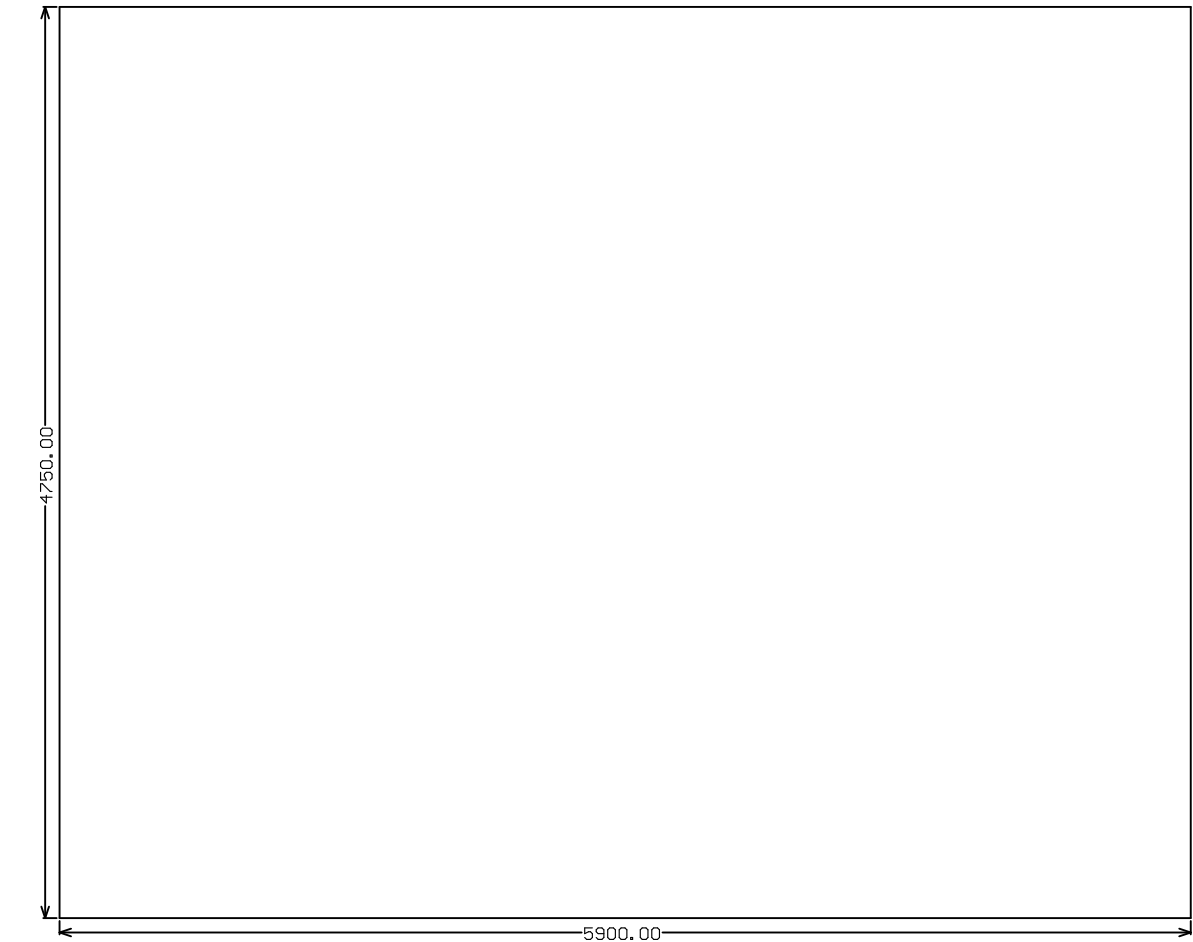
ALL ARTWORK VIEWED FROM TOP SIDE	BOARD #: SLHR003	REV: C	SUN REV: Not In VersionControl
LAYER NAME = Bottom Overlay	TID #: N/A		
	GENERATED : 11/30/2018 1:34:10 PM		TEXAS INSTRUMENTS

DRILL CHART:

Symbol	Count	Hole Size	Plated	Hole Type	Tolerance (Mil)	Tenting
◻	24	7.87mil (0.200mm)	PTH	Round	+0/-7.87	BOTH SIDES
⊙	176	18.00mil (0.457mm)	PTH	Round	+0/-18	
☆	16	38.00mil (0.965mm)	PTH	Round	+/-3	
□	62	40.00mil (1.016mm)	PTH	Round	+/-3	
⌘	16	52.00mil (1.321mm)	PTH	Round		
⊛	1	59.06mil (1.500mm)	PTH	Round	+/-3	
⌘	4	66.93mil (1.700mm)	PTH	Round	+/-3	
▽	4	68.00mil (1.727mm)	PTH	Round	+/-3	
○	4	125.98mil (3.200mm)	PTH	Round	+/-3	
✱	8	214.57mil (5.450mm)	PTH	Round	+/-3	
	315 Total					



ALL ARTWORK VIEWED FROM TOP SIDE	BOARD #: SLHR003	REV: C	SUN REV: Not In VersionControl
LAYER NAME = FAB	TID #: N/A		
	GENERATED : 11/30/2018 1:34:12 PM	TEXAS INSTRUMENTS	



ALL ARTWORK VIEWED FROM TOP SIDE	BOARD #:	SLHR003	REV:	C	SUN REV:	Not In VersionControl
LAYER NAME =	TID #:	N/A				
	GENERATED	: 11/30/2018	1:34:14 PM	TEXAS INSTRUMENTS		