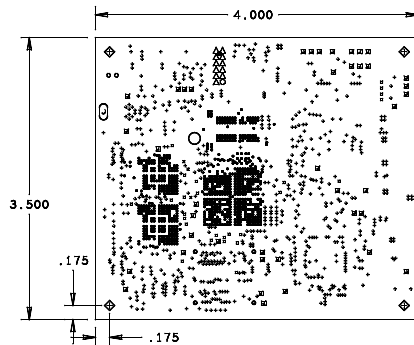


CUSTOMER NAME TEXAS INSTRUMENTS					DRAWN QC GRAPHICS	
BOARD NAME TIDA-080000 DISPLAY BOARD			DESCRIPTION LAYER 10 - BOTTOM			
BOARD NO. TIDA-080000	REV B	DATE 29 AUG 18	PRJ# TIDL P-117298-01	SH 10	OF 14	

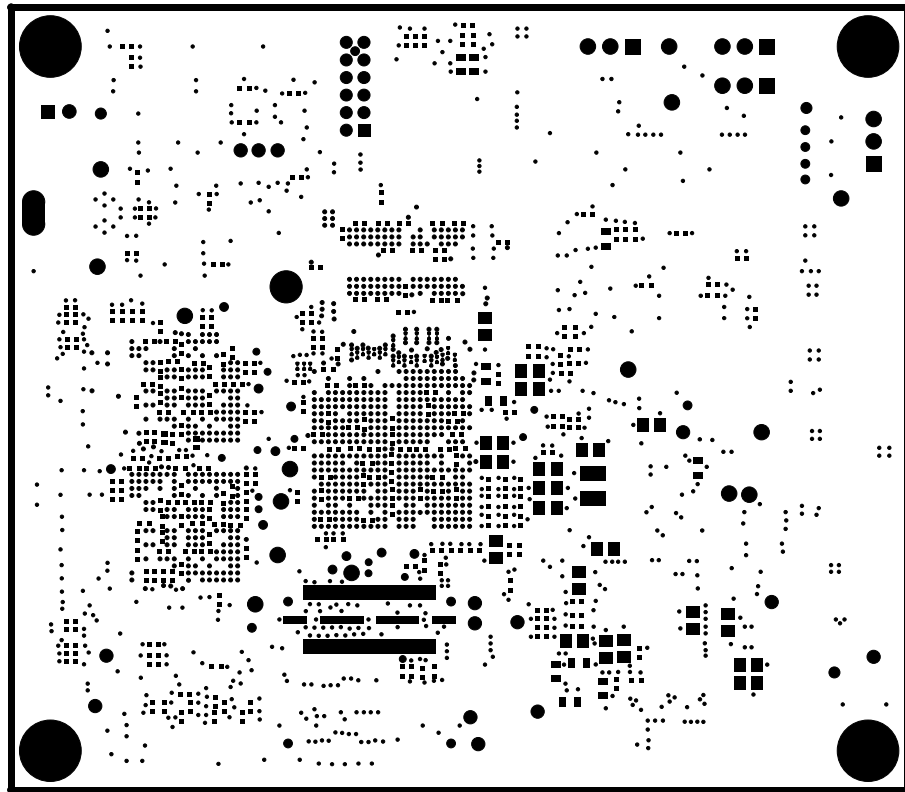
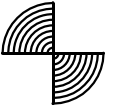
LAYER 1	0.0020	STACKUP	SOLDERMASK
	0.0020	1/2oz Sfg (Std Plt) - 50 Ohms - 0.005 width	
	0.0027	FR408H	40 Ohms - 0.0051 width
			100 Ohms Differential - 0.0041 width/0.00575 Space
LAYER 2	0.0006	1/2oz P/G	
	0.0040	FR408H	
LAYER 3	0.0006	1/2oz S/G	50 Ohms - 0.005 width
			40 Ohms - 0.0077 width
			100 Ohms Differential - 0.00425 width/0.00575 Space
	0.0072	FR408H	80 Ohms Differential - 0.0058 width/0.0042 Space
LAYER 4	0.0006	1/2oz S/G	50 Ohms - 0.005 width
	0.0040	FR408H	40 Ohms - 0.0077 width
LAYER 5	0.0006	1/2oz P/G	100 Ohms Differential - 0.00425 width/0.00575 Space
	0.0180	FR408H	
LAYER 6	0.0006	1/2oz P/G	
	0.0040	FR408H	
LAYER 7	0.0006	1/2oz S/G	50 Ohms - 0.005 width
			40 Ohms - 0.0077 width
			100 Ohms Differential - 0.00425 width/0.00575 Space
	0.0072	FR408H	80 Ohms Differential - 0.0058 width/0.0042 Space
LAYER 8	0.0006	1/2oz S/G	50 Ohms - 0.005 width
	0.0040	FR408H	40 Ohms - 0.0077 width
LAYER 9	0.0006	1/2oz P/G	100 Ohms Differential - 0.00425 width/0.00575 Space
	0.0027	FR408H	
LAYER 10	0.0020	1/2oz Sfg (Std Plt) - 50 Ohms - 0.005 width	
	0.0020	SOLDERMASK	40 Ohms - 0.004 width
			80 Ohms Differential - 0.00625 width/0.00475 Space

DRILL CHART: TOP to BOTTOM				
ALL UNITS ARE IN MILS				
FIGURE	SIZE	TOLERANCE	PLATED	QTY
*	8.0	+0.0/-8.0	PLATED	856
*	10.0	+0.0/-10.0	PLATED	757
*	12.0	+3.0/-12.0	PLATED	13
*	24.0	+3.0/-3.0	PLATED	16
o	35.0	+3.0/-3.0	PLATED	1
Δ	35.0	+3.0/-3.0	PLATED	11
≡	40.0	+3.0/-3.0	PLATED	41
•	42.0	+3.0/-3.0	PLATED	2
◇	147.0	+3.0/-3.0	PLATED	4
*	40.0	+3.0/-3.0	NON-PLATED	5
○	144.0	+3.0/-3.0	NON-PLATED	1
⊗	200.0x100.0	+4.0/-4.0	NON-PLATED	1

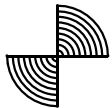
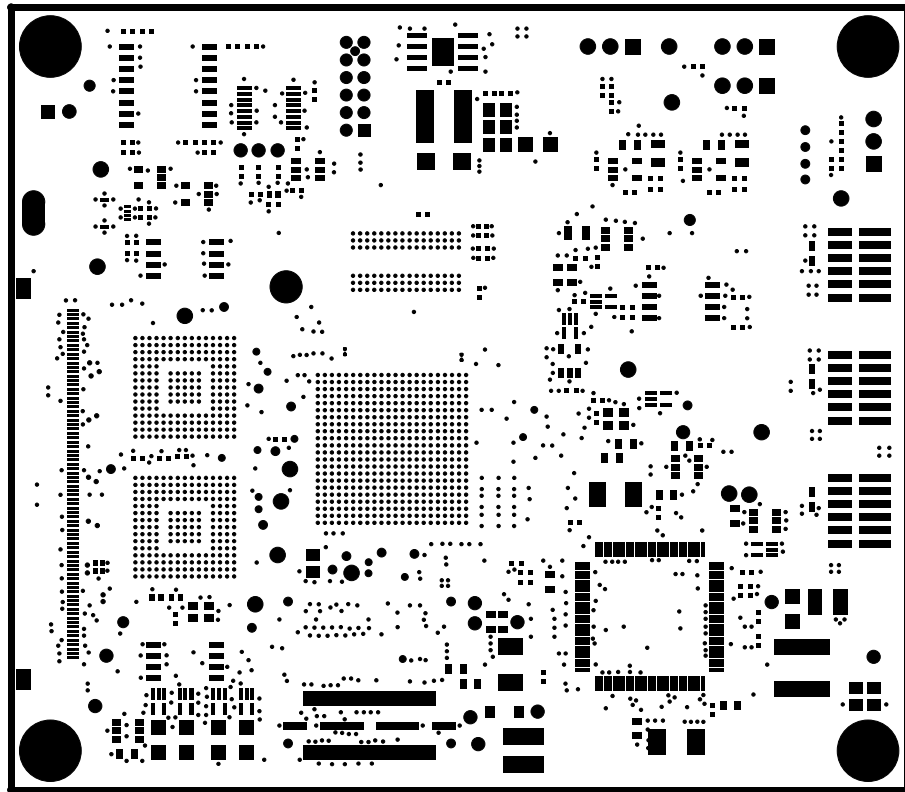
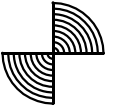


CUSTOMER NAME	TEXAS INSTRUMENTS	DATE	08/13/14
REFNO NAME	DRILL CHART FAB DRG	DATE	08/13/14
REFNO NO.	TIDA-080000	REV	5
DATE	28 AUG 10	FILE	TIDLP-117298-01
DATE	08/13/14	FILE	13
DATE	08/13/14	FILE	14

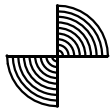
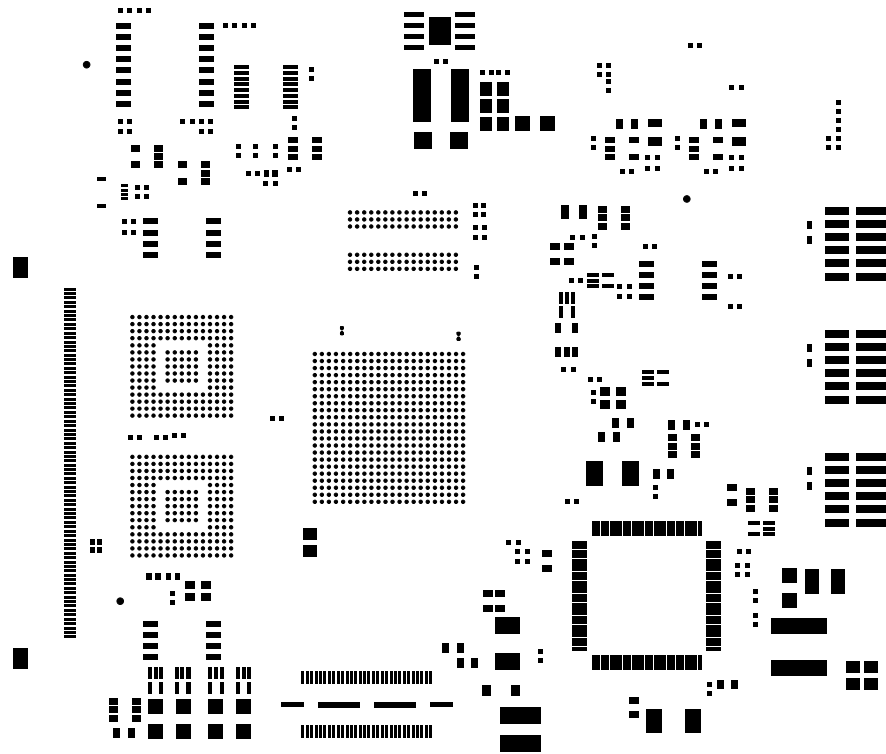
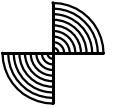
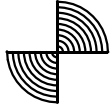
- FAB NOTES:**
- ALL DIMENSIONS ARE IN INCHES UNLESS OTHERWISE NOTED.
  - THE TWO SHALL BE FABRICATED TO IPC-6012 CLASS B00 - CLASS 2, CURRENT REVISIONS.
  - BOARD MATERIAL SHALL BE 180 TO 180A FR-408H OR EQUIVALENT. BOM AND REACH COMPLIANT AND LEAD FREE ASSEMBLY CAPABLE. BOARD MATERIAL SHALL MEET OR EXCEED IPC-4101B. BOM AND REACH CERTIFICATE OF CONFORMANCE SHALL BE DELIVERED WITH EACH LOT. BOM TO BE MARKED ON THE FINISHED BOARD.
  - BOARD MATERIAL & CONSTRUCTION MUST MEET OR EXCEED UL94V-0. UL REGISTERED E-CODE NUMBER FOR MATERIAL STACK UP USED MUST BE ON PCB SILKSREEN.
  - MINIMUM COPPER WALL THICKNESS OF PLATED-THRU HOLE: 0.001 INCH. WITH A MINIMUM ANNUAL RING OF 0.0005 INCH.
  - OVERALL BOARD THICKNESS: 0.062 INCH. (1.5748 MM). PROCESS: MEASURED FROM COMPLY TO COMPLY.
  - WAX, WARP & TWIST TO BE .0075 INCHES PER INCH.
  - ANY DISCREPANCY BETWEEN FABRICATION PRINT AND THE ACTUAL FABRICATION DATA MUST BE REVIEWED AND APPROVED.
- PROCESS NOTES:**
- EXCEPT AS NOTED BELOW, PLATE ALL EXPOSED AREAS WITH ELECTROLESS IMERSION GOLD, MINIMUM 100 MIN MICROINCHES THK GOLD 5-6 MICROINCHES THK.
  - FABRICATOR SHALL REMOVE UNUSED PADS ON INTERNAL LAYERS.
  - APPLY LDI SOLDERMASK. SOLDERMASK SHALL CONFORM TO IPC-SM-840, CLASS B, CURRENT REV. SOLDERMASK SHALL BE COMPATIBLE WITH SACROD OR EQUIVALENT SOLDER ALLOY AND SOLDER FLUX BATH TEMPERATURE OF 280 C.
  - SOLDERMASK ARTWORK HAS ZERO (0) OVERSIZED PADS. FABRICATION VENDOR IS ALLOWED TO ADJUST THE COMPONENT SOLDERMASK PADS TO MEET THEIR TOOLING REQUIREMENTS WHILE MAINTAINING WEEDING BETWEEN ADJACENT PADS.
  - SOLDERABILITY SHALL BE IN ACCORDANCE WITH IPC/JEDEC J-STD-002A, WITH SOLDER BATH TEMPERATURE OF 260 C +/- 5 C FOR DIP OR REFLOW TEST.
  - APPLY LPI SILKSREEN OR EQUIVALENT PER THE ARTWORK, COLOR: WHITE.
  - BOARD MUST BE ELECTRICALLY TESTED USING SUPPLIED IPC-D-368 RELIST.
  - VENDOR MUST SUPPLY PANELIZED PASTE LAYERS FOR PASTERMASK STENCIL.



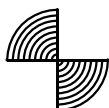
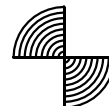
CUSTOMER NAME TEXAS INSTRUMENTS					DRAWN QC GRAPHICS	
BOARD NAME TIDA-080000 DISPLAY BOARD			DESCRIPTION SOLDERMASK BOTTOM			
BOARD NO. TIDA-080000	REV B	DATE 29 AUG 18	PRJ# TIDL P-117298-01	SH 8	OF 14	



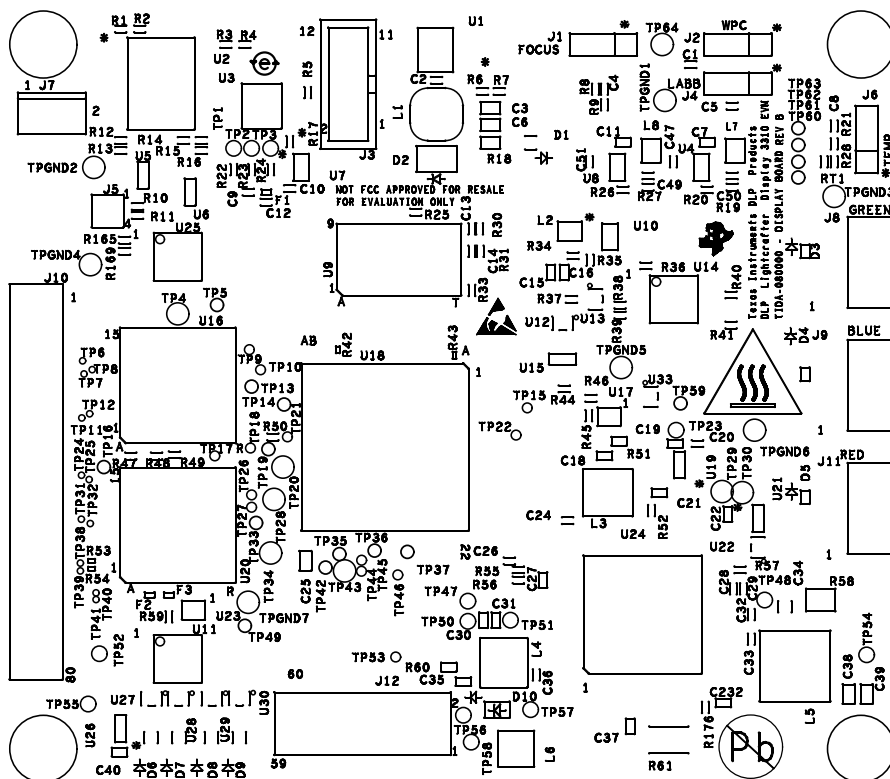
CUSTOMER NAME TEXAS INSTRUMENTS					DRAWN QC GRAPHICS	
BOARD NAME TIDA-080000 DISPLAY BOARD			DESCRIPTION SOLDERMASK TOP			
BOARD NO. TIDA-080000	REV B	DATE 29 AUG 18	PRJ# TIDL P-117298-01	SH 7	OF 14	



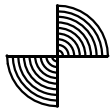
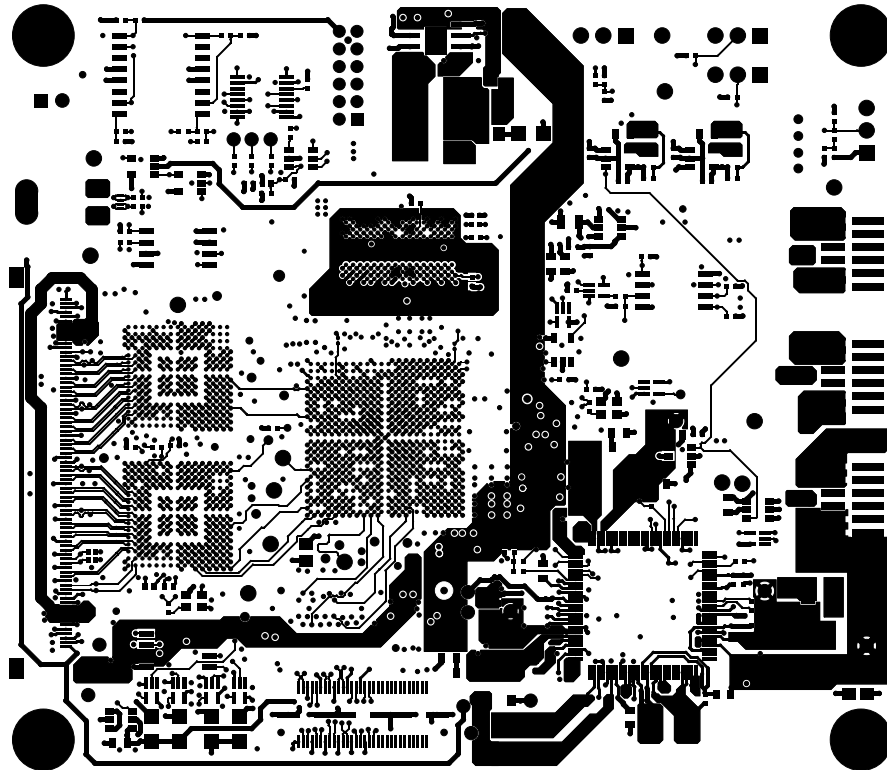
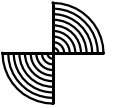
CUSTOMER NAME TEXAS INSTRUMENTS					DRAWN QC GRAPHICS	
BOARD NAME TIDA-080000 DISPLAY BOARD			DESCRIPTION SOLDERPASTE TOP			
BOARD NO. TIDA-080000	REV B	DATE 29 AUG 18	PRJ# TIDL P-117298-01	SH 11	OF 14	



CUSTOMER NAME TEXAS INSTRUMENTS					DRAWN QC GRAPHICS	
BOARD NAME TIDA-080000 DISPLAY BOARD			DESCRIPTION SILKSCREEN BOTTOM			
BOARD NO. TIDA-080000		REV B	DATE 29 AUG 18	PRJ# TIDL P-117298-01		SH 10 OF 14



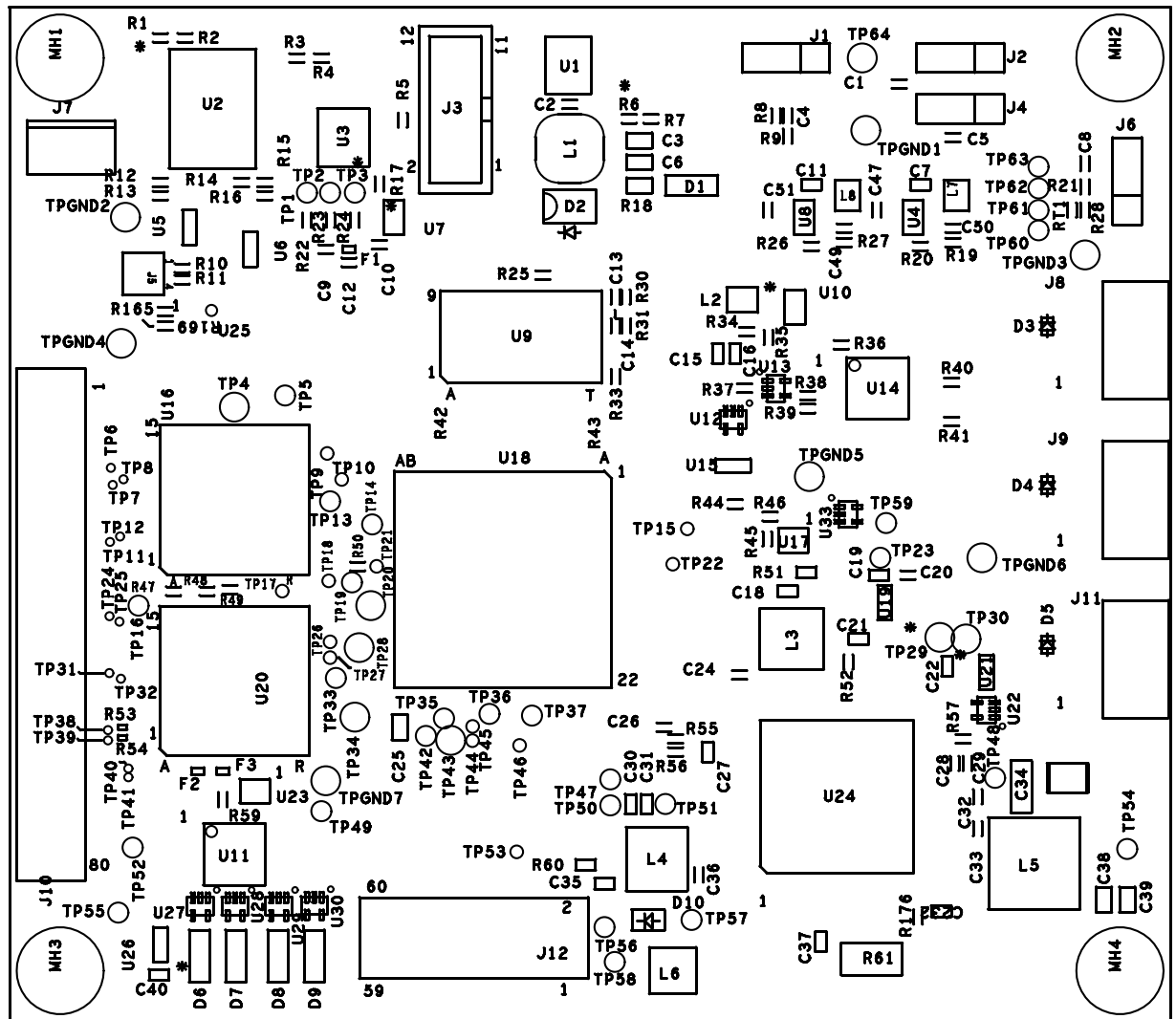
CUSTOMER NAME TEXAS INSTRUMENTS					DRAWN QC GRAPHICS	
BOARD NAME TIDA-080000 DISPLAY BOARD			DESCRIPTION SILKSCREEN TOP			
BOARD NO. TIDA-080000	REV B	DATE 29 AUG 18	PRJ# TIDL P-117298-01	SH 9	OF 14	



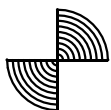
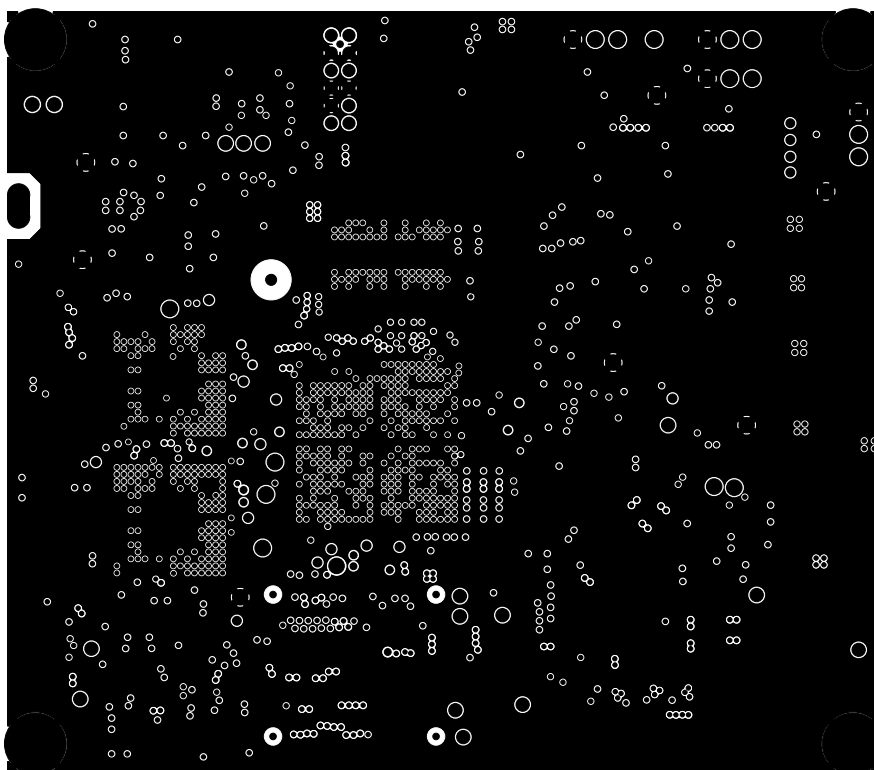
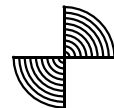
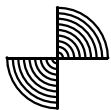
CUSTOMER NAME TEXAS INSTRUMENTS					DRAWN QC GRAPHICS	
BOARD NAME TIDA-080000 DISPLAY BOARD			DESCRIPTION LAYER 1 - TOP			
BOARD NO. TIDA-080000		REV B	DATE 29 AUG 18	PRJ# TIDL P-117298-01	SH 1	OF 14



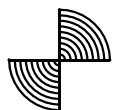
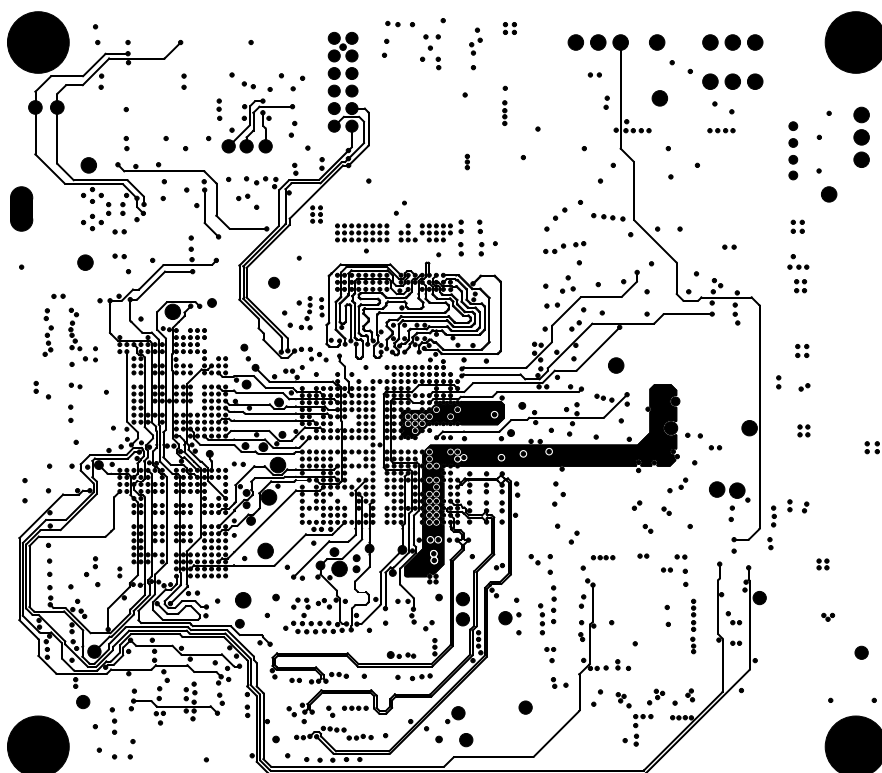
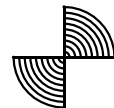
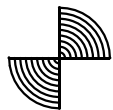




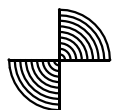
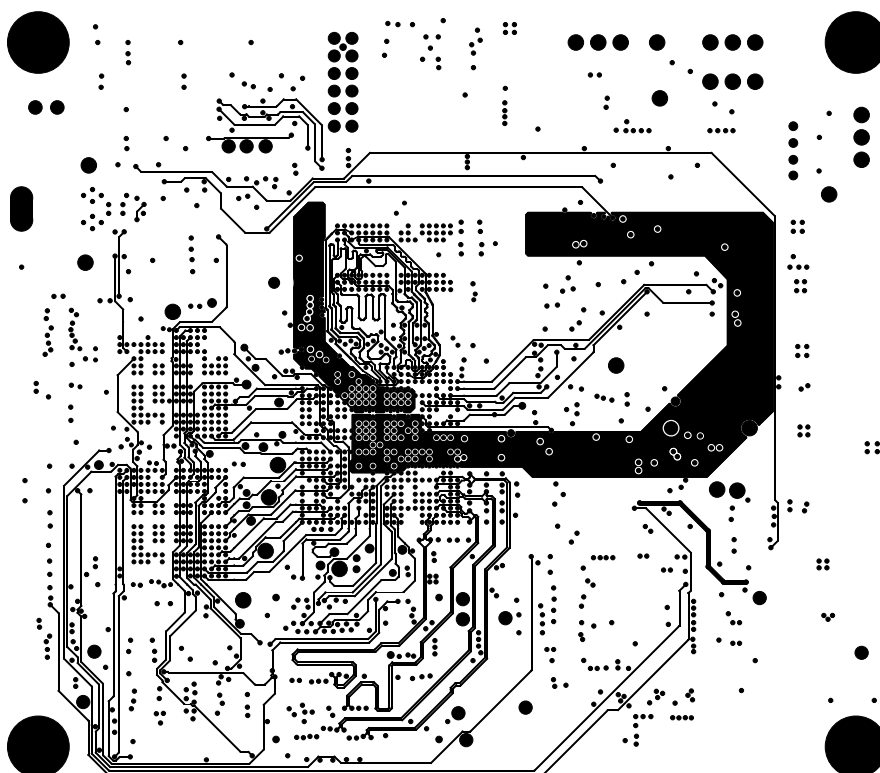
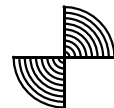
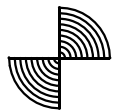
CUSTOMER NAME TEXAS INSTRUMENTS					DRAWN QC GRAPHICS	
BOARD NAME TIDA-080000 DISPLAY BOARD			DESCRIPTION			
BOARD NO. TIDA-080000		REV B	DATE 29 AUG 18	PRJ# TIDL P-117298-01	SH OF	14



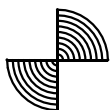
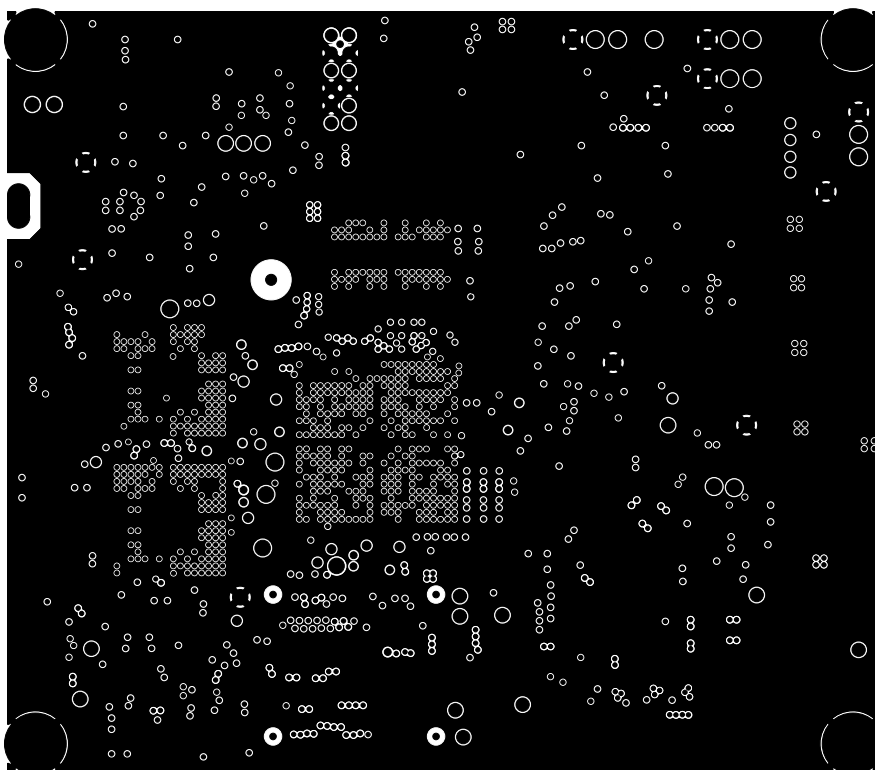
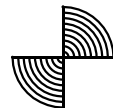
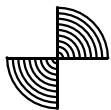
CUSTOMER NAME TEXAS INSTRUMENTS					DRAWN QC GRAPHICS	
BOARD NAME TIDA-080000 DISPLAY BOARD			DESCRIPTION LAYER 2 - GND PLANE			
BOARD NO. TIDA-080000	REV B	DATE 29 AUG 18	PRJ# TIDL P-117298-01	SH 2	OF 14	



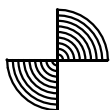
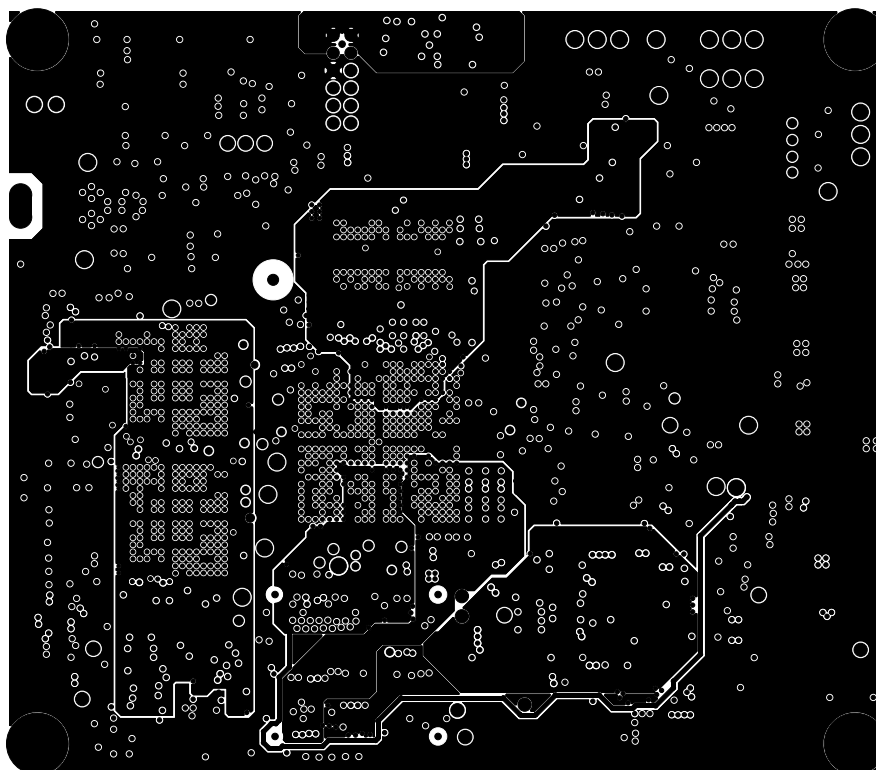
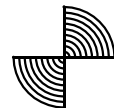
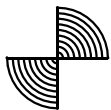
CUSTOMER NAME TEXAS INSTRUMENTS					DRAWN QC GRAPHICS	
BOARD NAME TIDA-080000 DISPLAY BOARD			DESCRIPTION LAYER 3 - SIGNAL			
BOARD NO. TIDA-080000		REV B	DATE 29 AUG 18	PRJ# TIDL P-117298-01	SH 3	OF 14



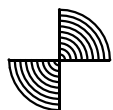
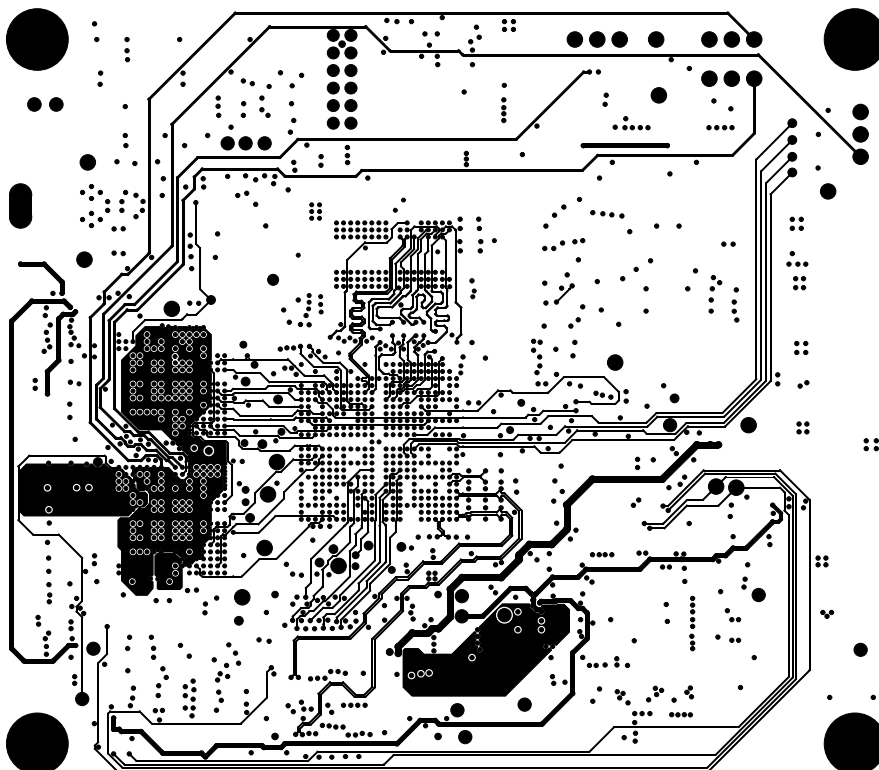
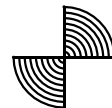
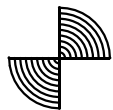
CUSTOMER NAME TEXAS INSTRUMENTS					DRAWN QC GRAPHICS	
BOARD NAME TIDA-080000 DISPLAY BOARD			DESCRIPTION LAYER 4 - SIGNAL			
BOARD NO. TIDA-080000	REV B	DATE 29 AUG 18	PRJ# TIDL P-117298-01	SH 4	OF 14	



CUSTOMER NAME TEXAS INSTRUMENTS				DRAWN QC GRAPHICS	
BOARD NAME TIDA-080000 DISPLAY BOARD			DESCRIPTION LAYER 5 - GND PLANE		
BOARD NO. TIDA-080000	REV B	DATE 29 AUG 18	PRJ# TIDL P-117298-01	SH 5	OF 14

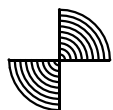
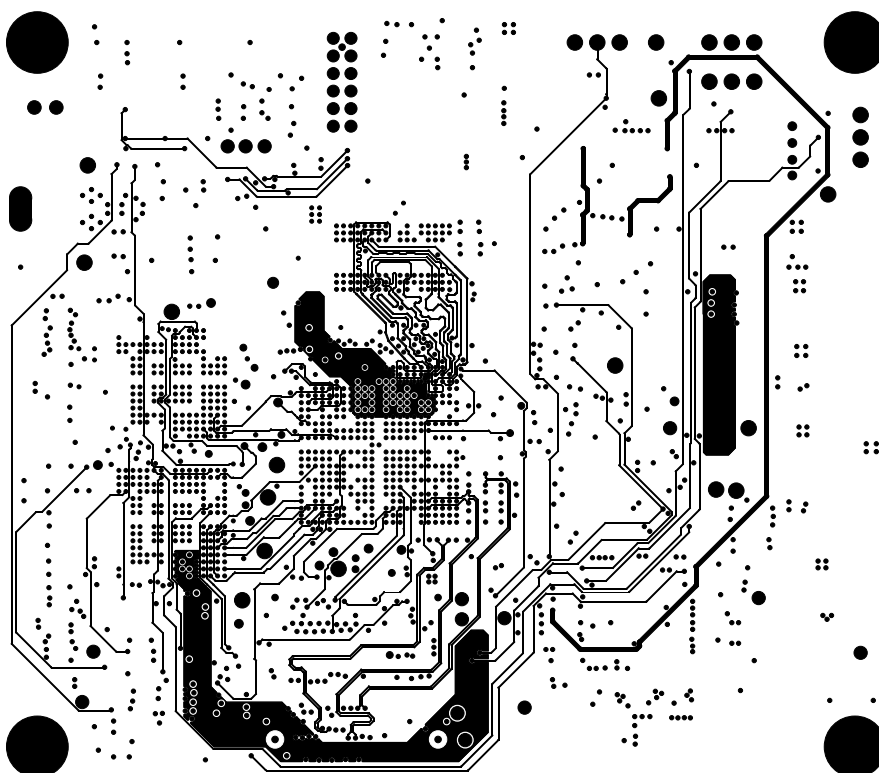
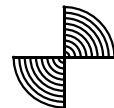
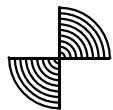


CUSTOMER NAME TEXAS INSTRUMENTS				DRAWN QC GRAPHICS	
BOARD NAME TIDA-080000 DISPLAY BOARD			DESCRIPTION LAYER 6 - POWER PLANE		
BOARD NO. TIDA-080000	REV B	DATE 29 AUG 18	PRJ# TIDL P-117298-01	SH 6	OF 14

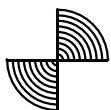
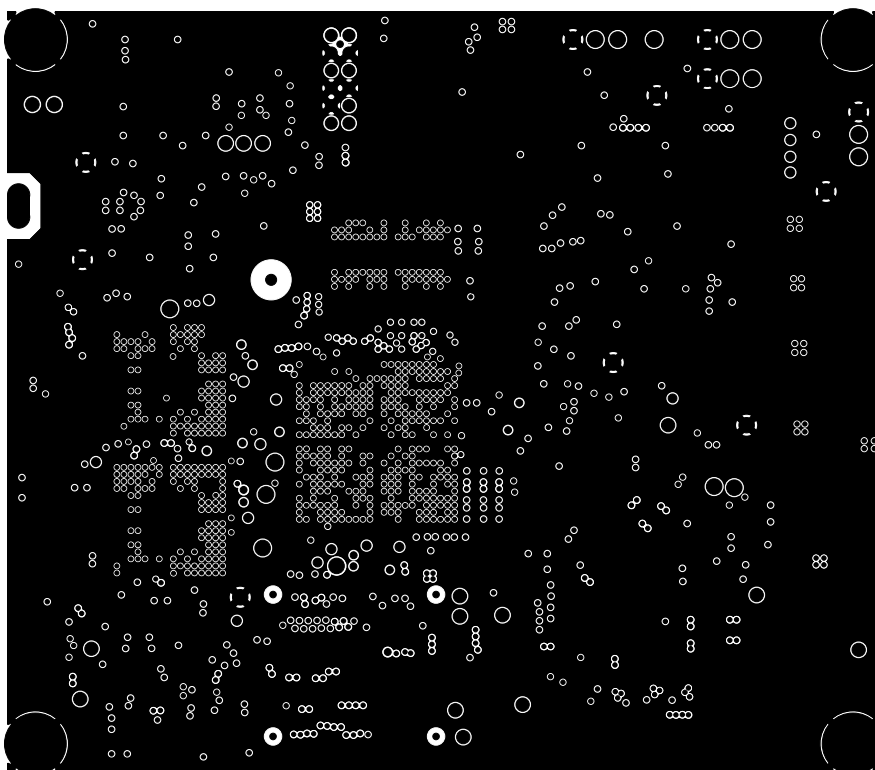
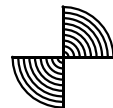


CUSTOMER NAME TEXAS INSTRUMENTS				DRAWN QC GRAPHICS	
BOARD NAME TIDA-080000 DISPLAY BOARD			DESCRIPTION LAYER 7 - SIGNAL		
BOARD NO. TIDA-080000	REV B	DATE 29 AUG 18	PRJ# TIDL P-117298-01	SH 7	OF 14

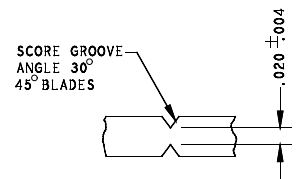
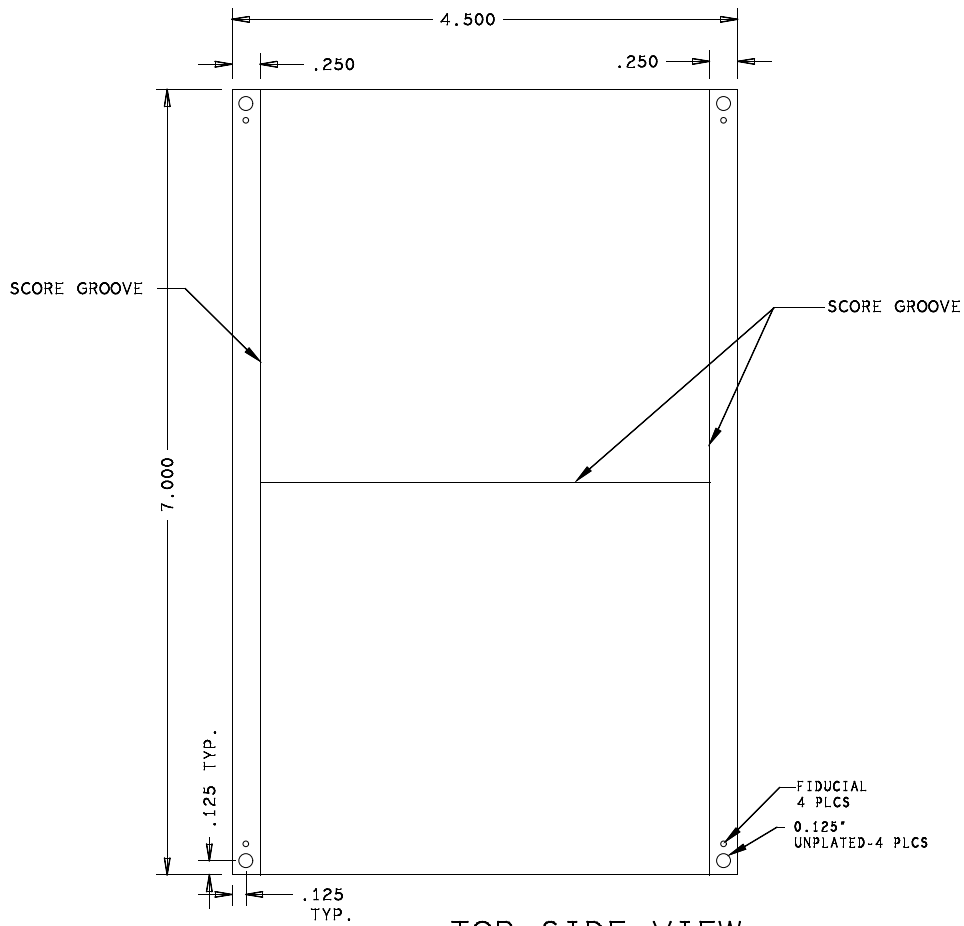




CUSTOMER NAME TEXAS INSTRUMENTS				DRAWN QC GRAPHICS	
BOARD NAME TIDA-080000 DISPLAY BOARD			DESCRIPTION LAYER 8 - SIGNAL		
BOARD NO. TIDA-080000	REV B	DATE 29 AUG 18	PRJ# TIDL P-117298-01	SH 8	OF 14

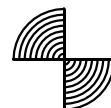
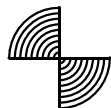


CUSTOMER NAME TEXAS INSTRUMENTS				DRAWN QC GRAPHICS	
BOARD NAME TIDA-080000 DISPLAY BOARD			DESCRIPTION LAYER 9 - GND PLANE		
BOARD NO. TIDA-080000	REV B	DATE 29 AUG 18	PRJ# TIDL P-117298-01	SH 9	OF 14



TOP SIDE VIEW

CUSTOMER NAME TEXAS INSTRUMENTS					DRAWN OC GRAPHICS	
BOARD NAME TIDA-080000 DISPLAY BOARD			DESCRIPTION PANEL DRAWING			
BOARD NO. TIDA-080000	REV B	DATE 29 AUG 18	PLN# TIDLP-117298-01	BY 14	CF 14	



CUSTOMER NAME TEXAS INSTRUMENTS					DRAWN QC GRAPHICS	
BOARD NAME TIDA-080000 DISPLAY BOARD			DESCRIPTION SOLDERPASTE BOTTOM			
BOARD NO. TIDA-080000		REV B	DATE 29 AUG 18	PRJ# TIDL P-117298-01	SH 12	OF 14

