

Revision History				
Rev	ECN #	Approved Date	Approved by	Notes
N/A	N/A	N/A	N/A	N/A

A

B

C

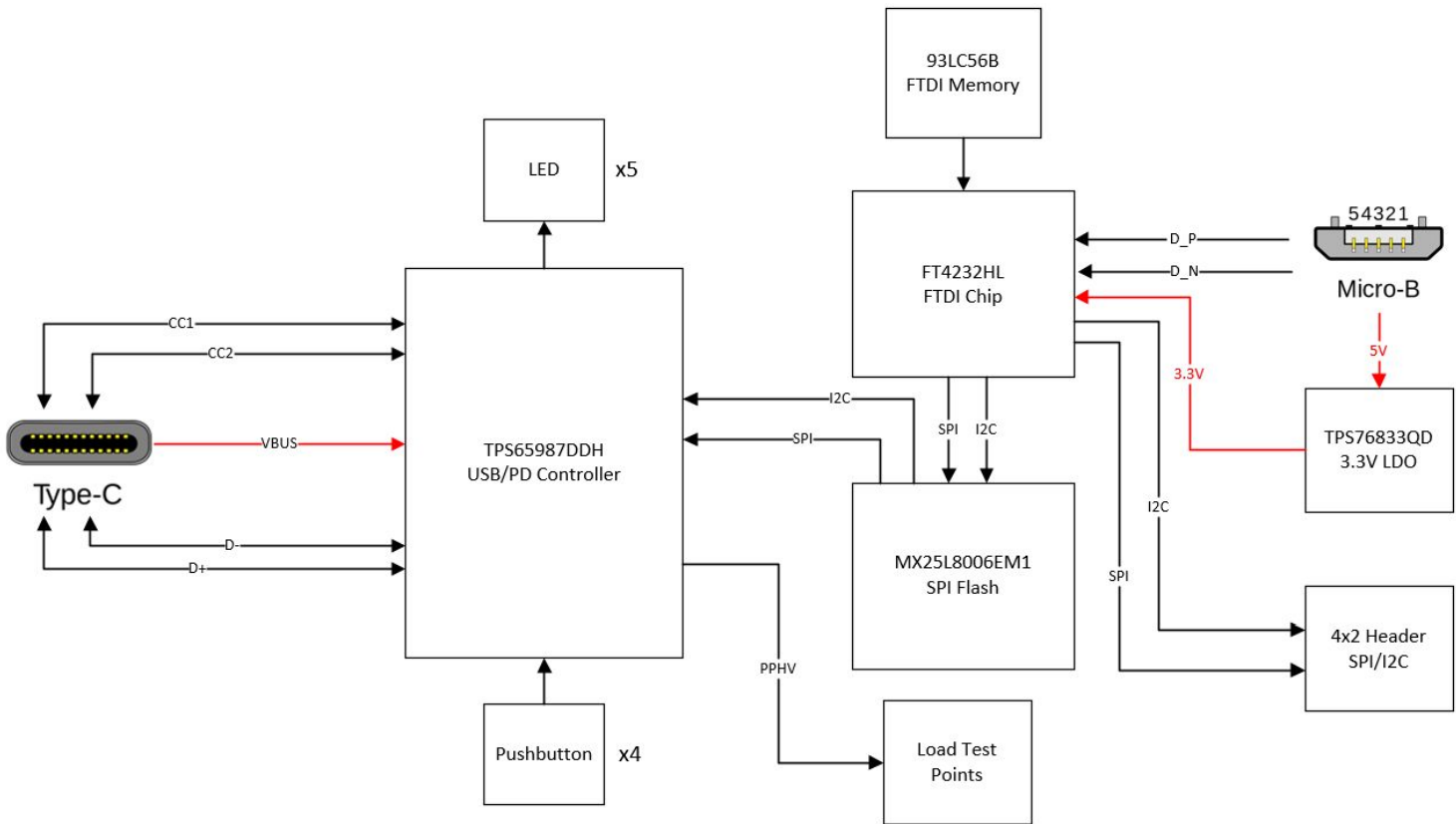
D

A

B

C

D



Texas Instruments and/or its licensors do not warrant the accuracy or completeness of this specification or any information contained therein. Texas Instruments and/or its licensors do not warrant that this design will meet the specifications, will be suitable for your application or fit for any particular purpose, or will operate in an implementation. Texas Instruments and/or its licensors do not warrant that the design is production worthy. You should completely validate and test your design implementation to confirm the system functionality for your application.

Orderable: USBCPDWDRDUEVM		Designed for: Public Release	Mod. Date: 6/27/2018
TID #: TIDA-050014	Project Title: Power Duo		
Number: PSIL054	Rev: E1	Sheet Title:	
SVN Rev: Version control disabled		Assembly Variant: 001	Sheet: 1 of 9
Drawn By:		File: PSIL054E1_CoverSheet.SchDoc	Size: B
Engineer: Eric Beljaars/Adam McGaffigan		Contact: http://www.ti.com/support	

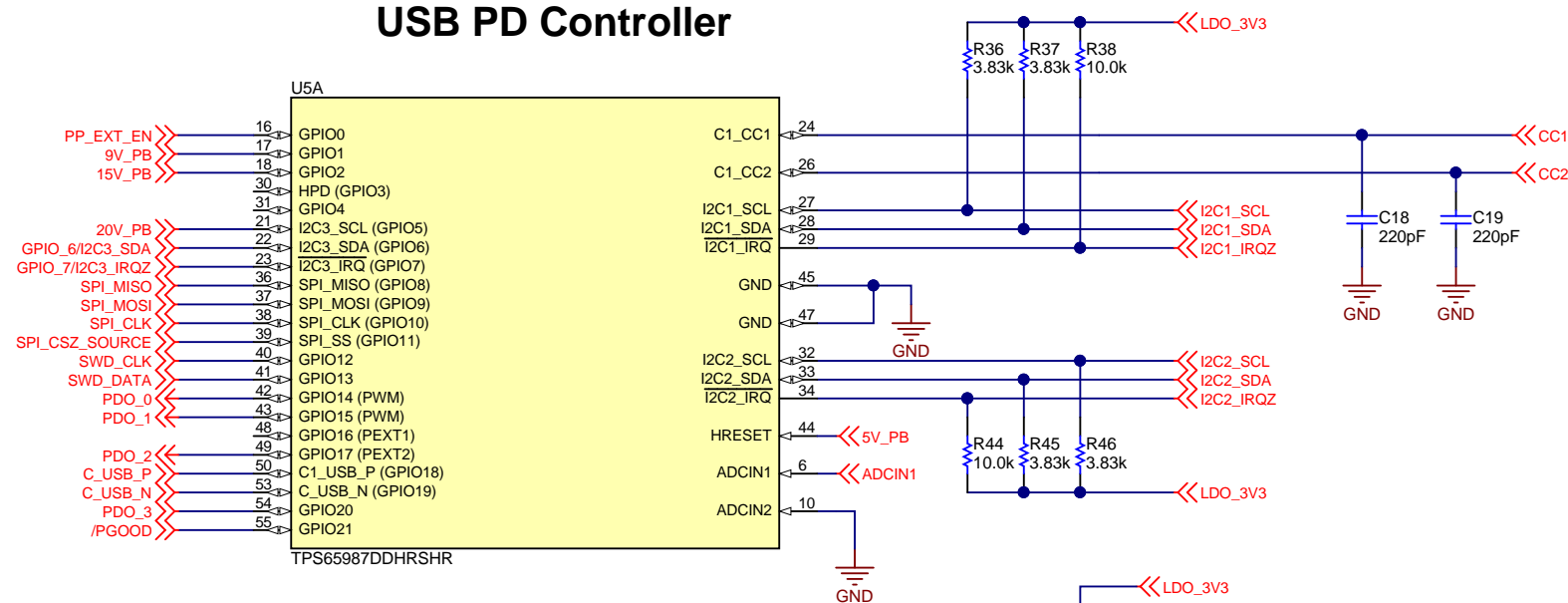
A



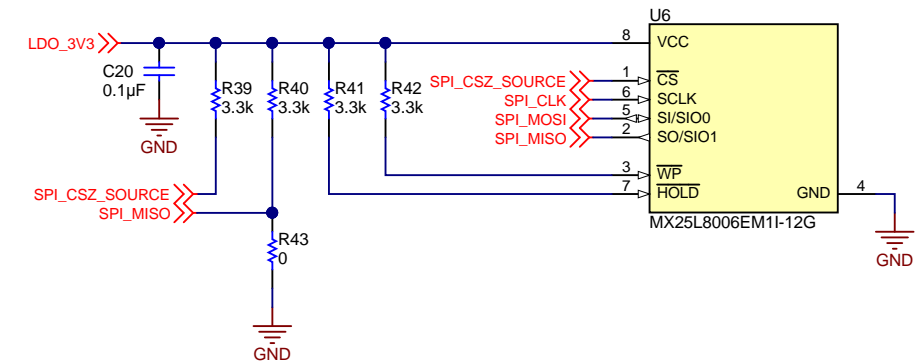
C



USB PD Controller

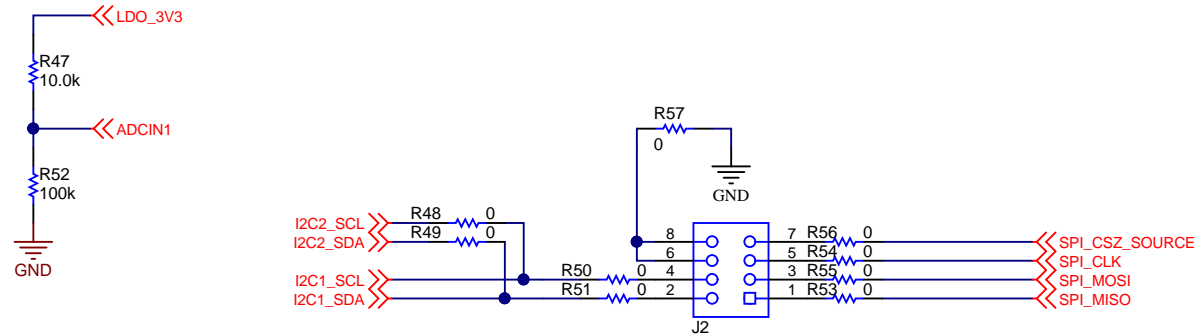


SPI Flash

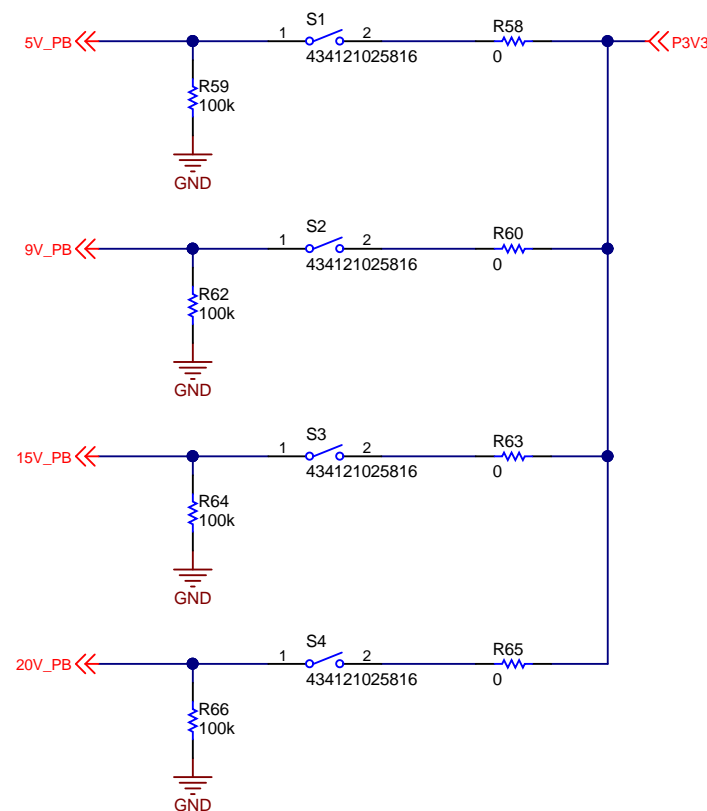
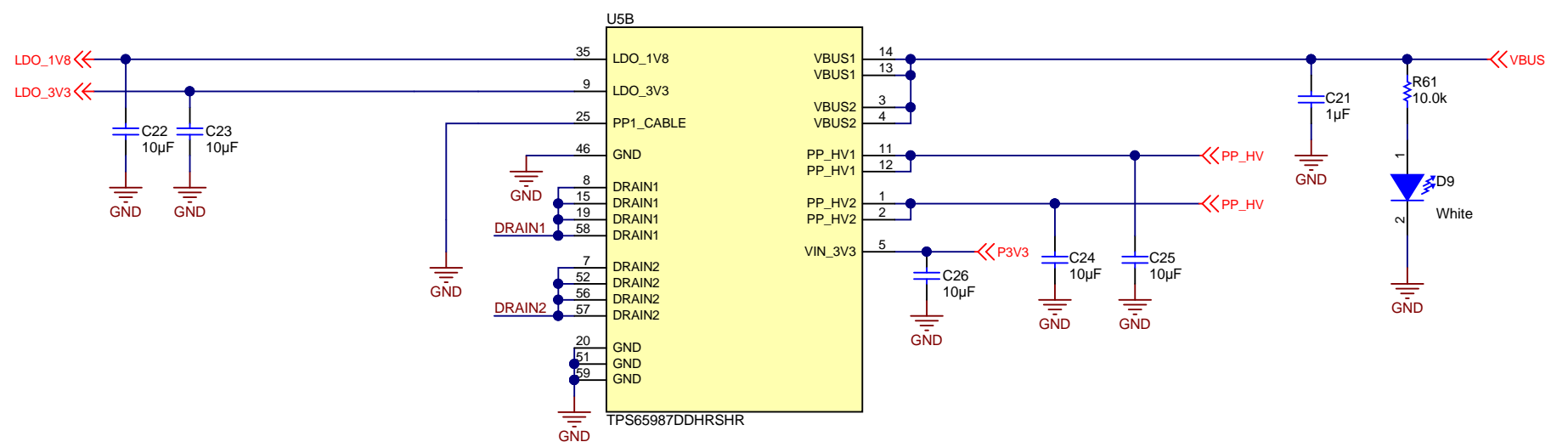


Variable DC/DC Control

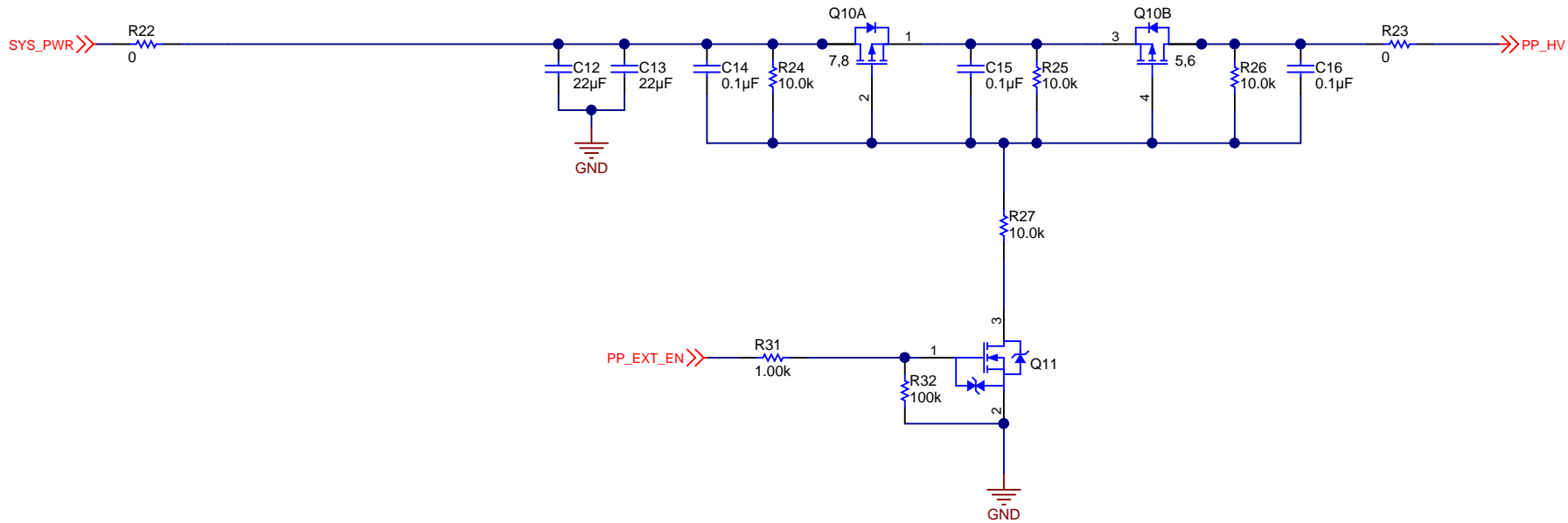
Truth Table			Output Voltage
PDO_3	PDO_2	PDO_1	
0	0	0	5V
0	0	1	9V
0	1	0	15V
1	0	0	20V



USB PD Power Path

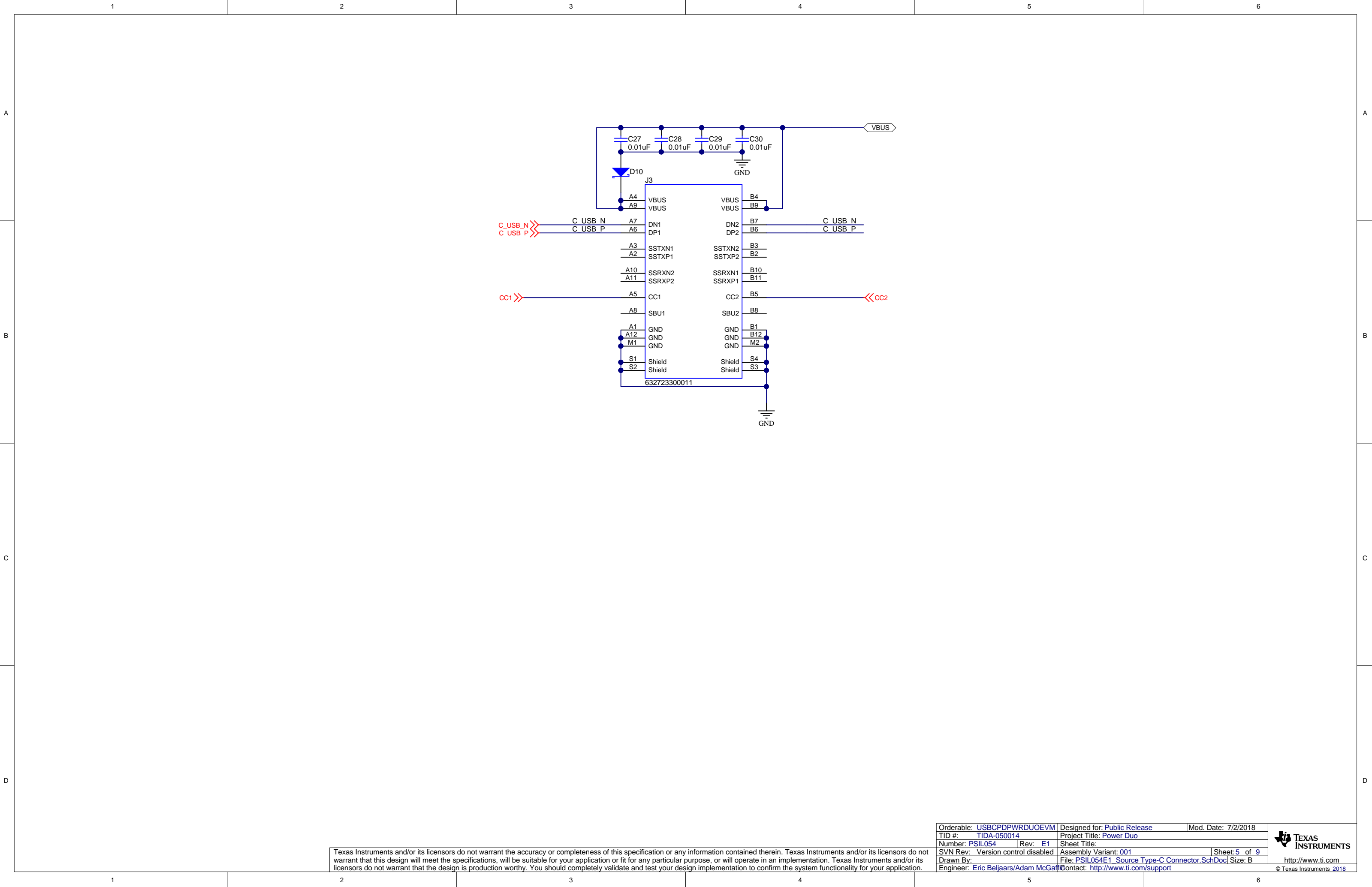


External Power Path (PD Duo Mode)



Texas Instruments and/or its licensors do not warrant the accuracy or completeness of this specification or any information contained therein. Texas Instruments and/or its licensors do not warrant that this design will meet the specifications, will be suitable for your application or fit for any particular purpose, or will operate in an implementation. Texas Instruments and/or its licensors do not warrant that the design is production worthy. You should completely validate and test your design implementation to confirm the system functionality for your application.

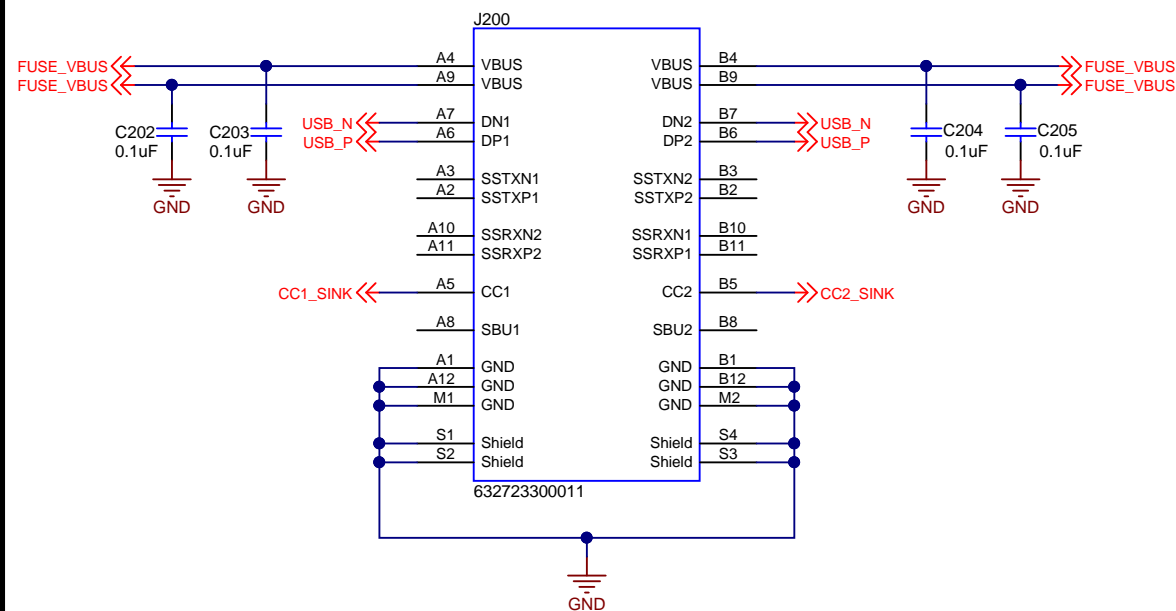
Orderable: USBCPDWPDUEVM		Designed for: Public Release	Mod. Date: 6/27/2018
TID #: TIDA-050014		Project Title: Power Duo	
Number: PSIL054	Rev: E1	Sheet Title:	
SVN Rev: Version control disabled		Assembly Variant: 001	Sheet: 4 of 9
Drawn By:		File: PSIL054E1_Bypass Power Path.SchDoc	Size: B
Engineer: Eric Beljaars/Adam McGaffigan		Contact: http://www.ti.com/support	



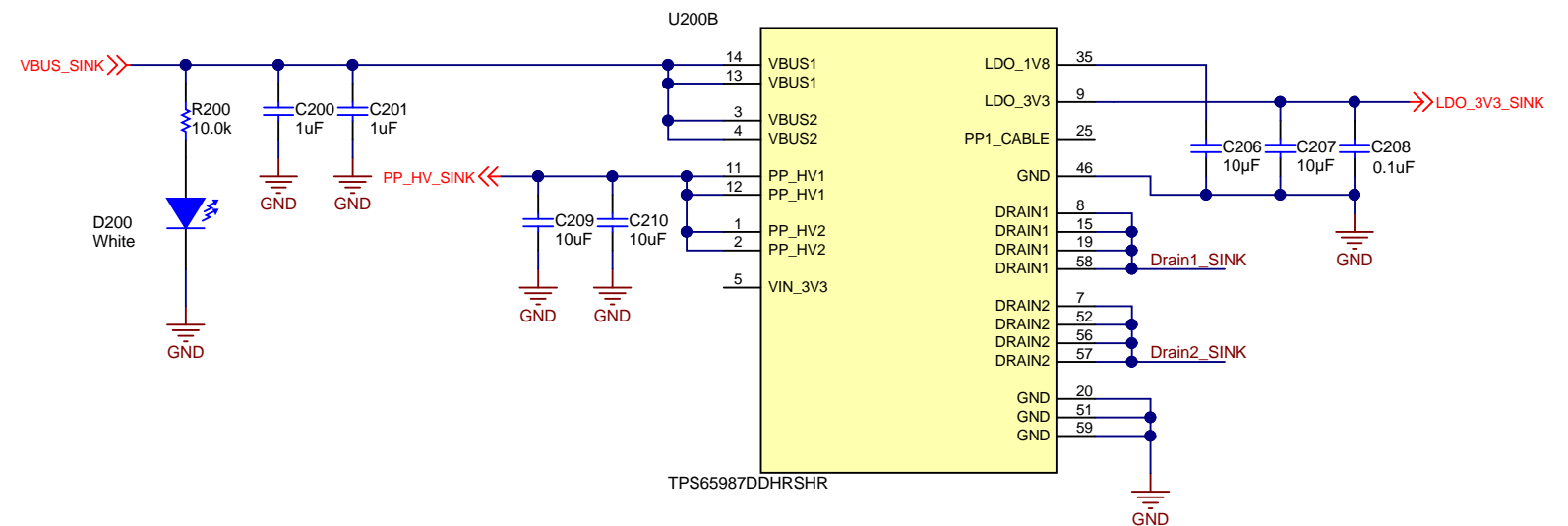
Texas Instruments and/or its licensors do not warrant the accuracy or completeness of this specification or any information contained therein. Texas Instruments and/or its licensors do not warrant that this design will meet the specifications, will be suitable for your application or fit for any particular purpose, or will operate in an implementation. Texas Instruments and/or its licensors do not warrant that the design is production worthy. You should completely validate and test your design implementation to confirm the system functionality for your application.

Orderable: USBCPD PWRDUOEVM		Designed for: Public Release	Mod. Date: 7/2/2018
TID #:	TIDA-050014	Project Title: Power Duo	
Number:	PSIL054	Rev:	E1
SVN Rev: Version control disabled		Assembly Variant: 001	
Drawn By:		File: PSIL054E1_Source Type-C Connector.SchDoc	Sheet: 5 of 9
Engineer: Eric Beljaars/Adam McGaffigan		Contact: http://www.ti.com/support	

USB Type-C Connector



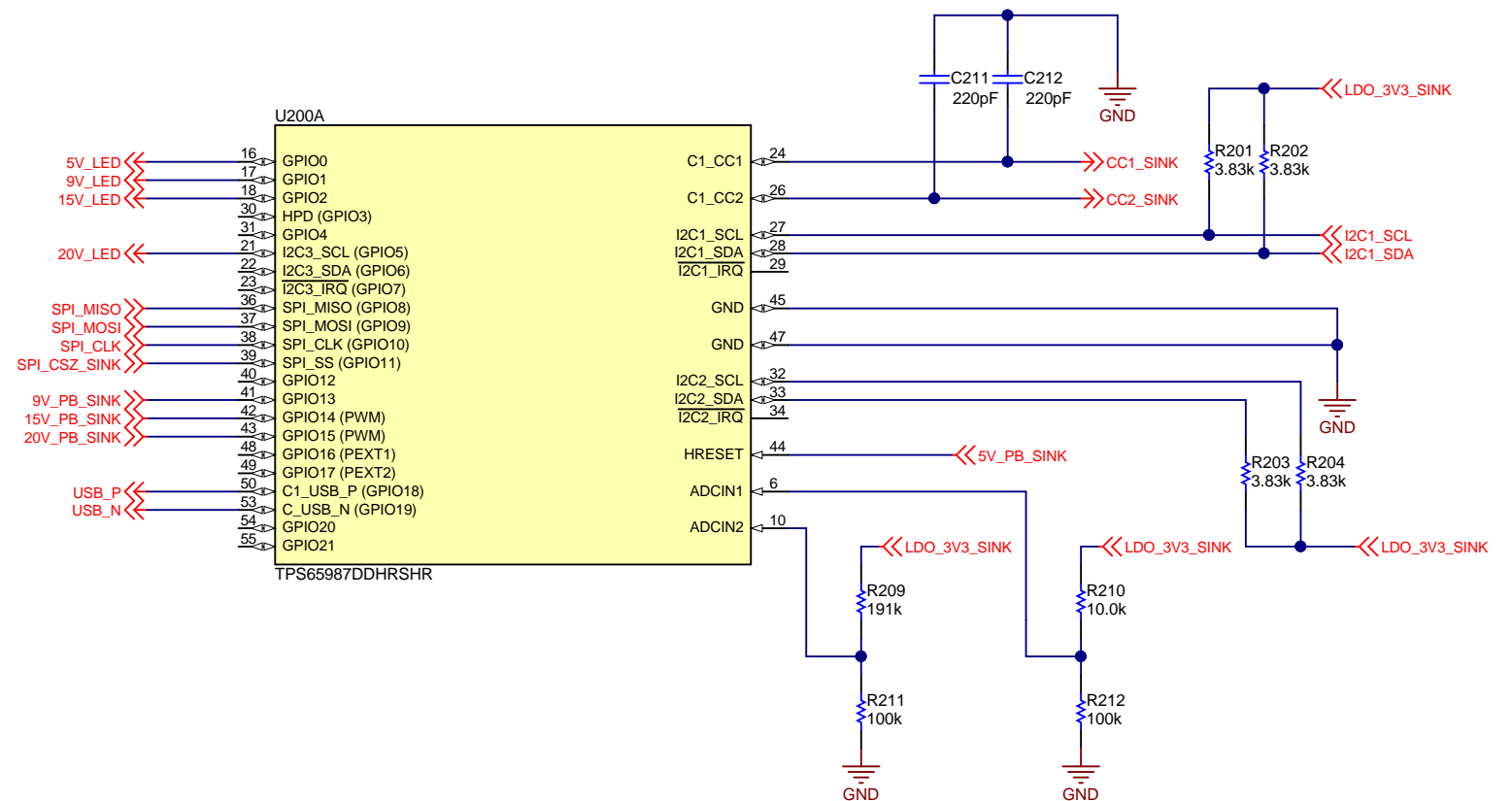
USB PD Power Path



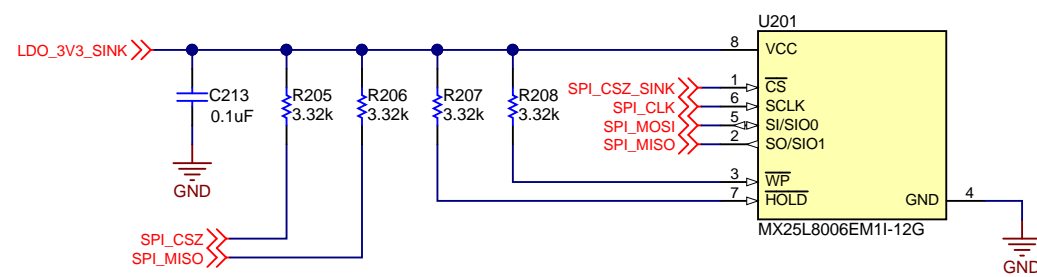
FUSE: Fuse_VBUS => VBUS



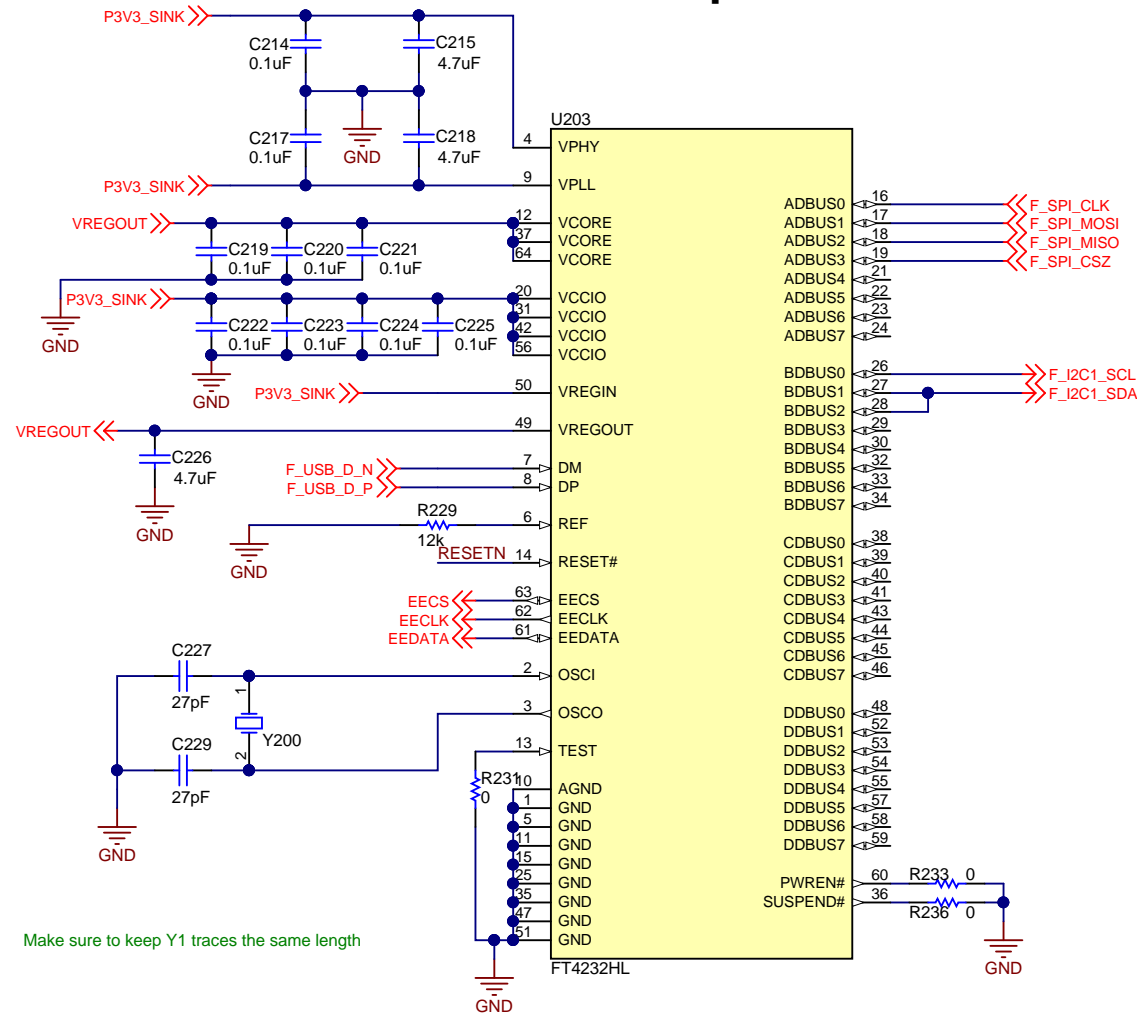
USB PD Controller



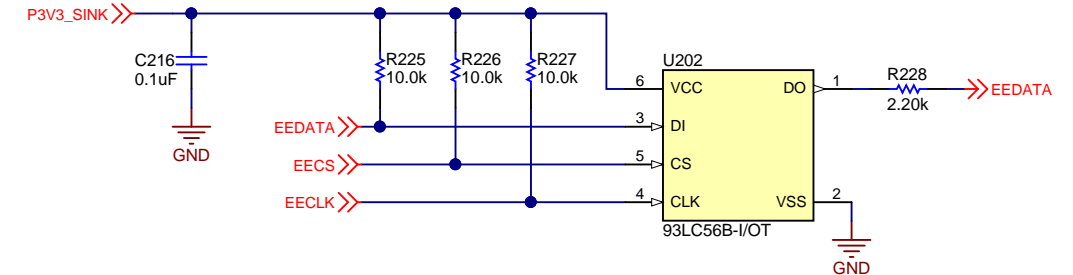
SPI FLASH



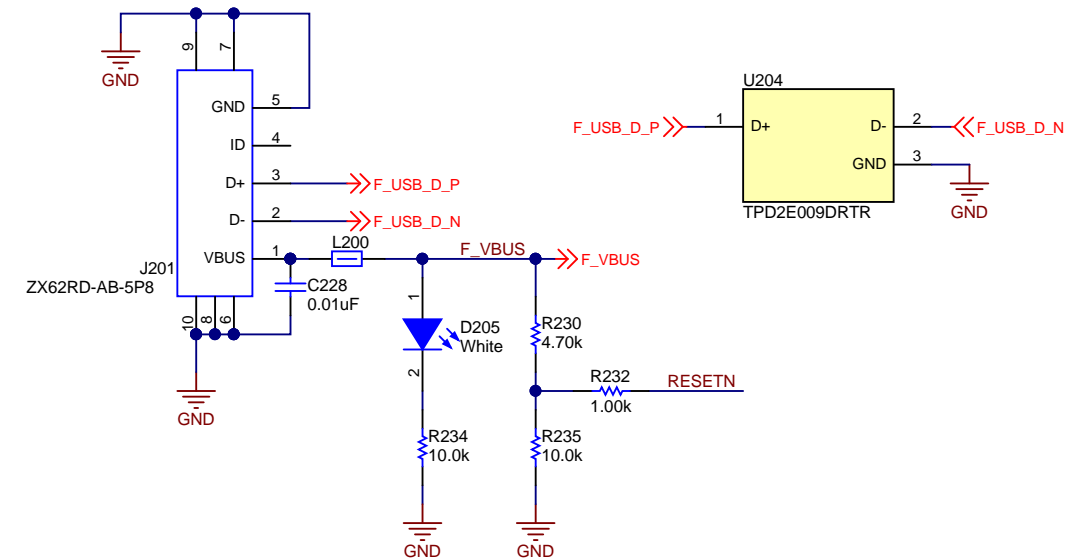
FTDI Chip



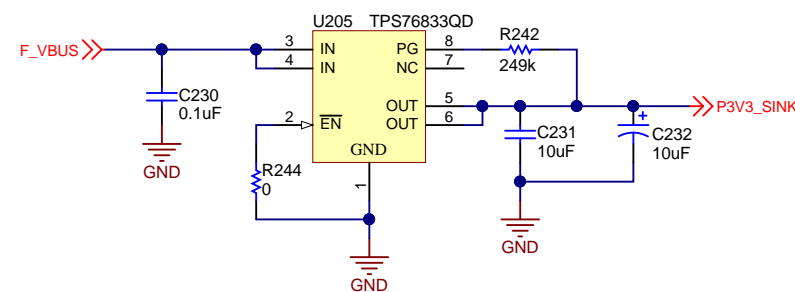
FTDI Memory



Micro-B Connector



LDO: Micro USB VBUS => 3.3V



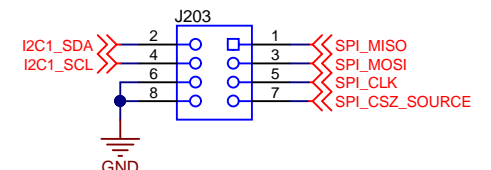
SPI & I2C Resistors



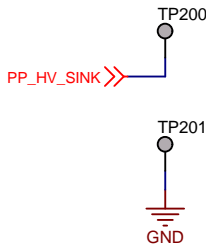
SPI CS Header



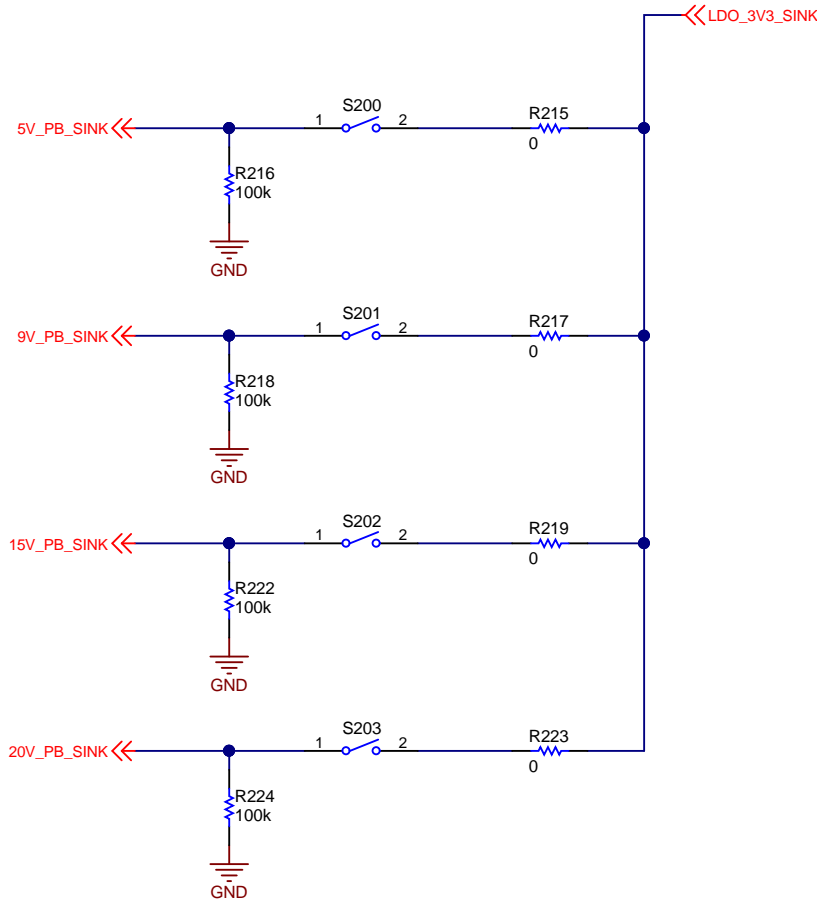
Programing Header



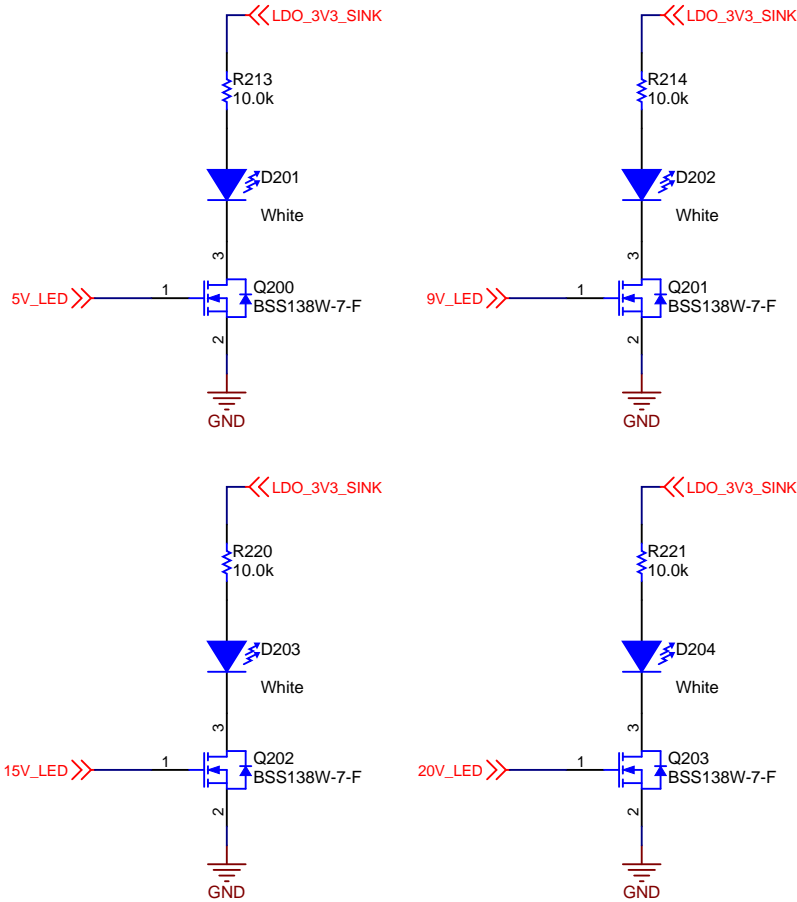
Load Test Points



Push Buttons



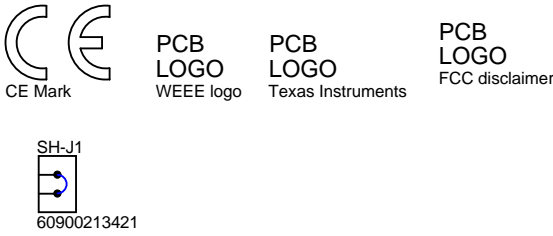
Voltage LEDs





PCB Number: PSIL054

PCB Rev: E1



ZZ2

Assembly Note

These assemblies are ESD sensitive, ESD precautions shall be observed.

ZZ3

Assembly Note

These assemblies must be clean and free from flux and all contaminants. Use of no clean flux is not acceptable.

ZZ4

Assembly Note

These assemblies must comply with workmanship standards IPC-A-610 Class 2, unless otherwise specified.

Texas Instruments and/or its licensors do not warrant the accuracy or completeness of this specification or any information contained therein. Texas Instruments and/or its licensors do not warrant that this design will meet the specifications, will be suitable for your application or fit for any particular purpose, or will operate in an implementation. Texas Instruments and/or its licensors do not warrant that the design is production worthy. You should completely validate and test your design implementation to confirm the system functionality for your application.