

Revision History				
Rev	ECN #	Approved Date	Approved by	Notes
N/A	N/A	N/A	N/A	N/A

A

A

B

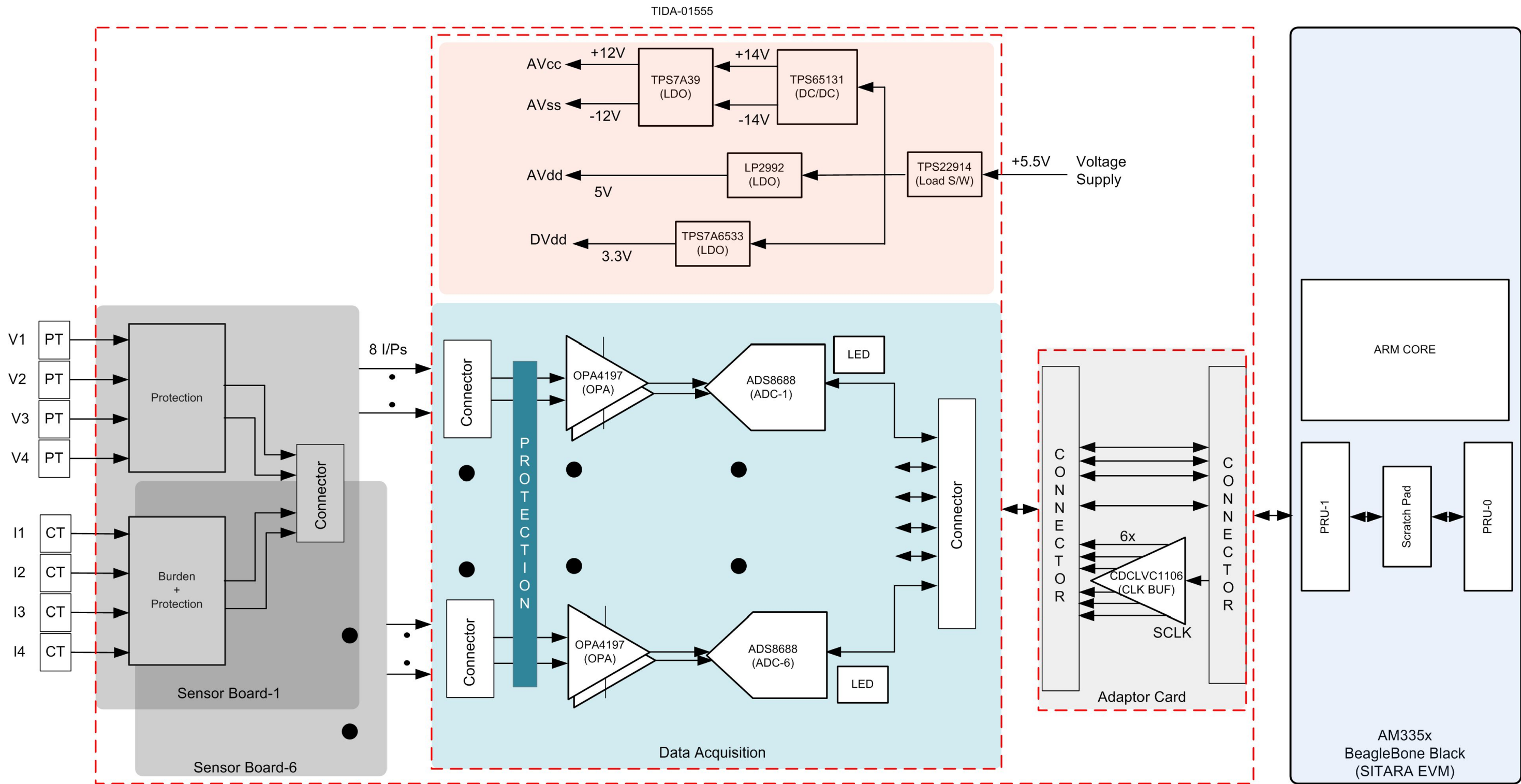
B

C

C

D

D

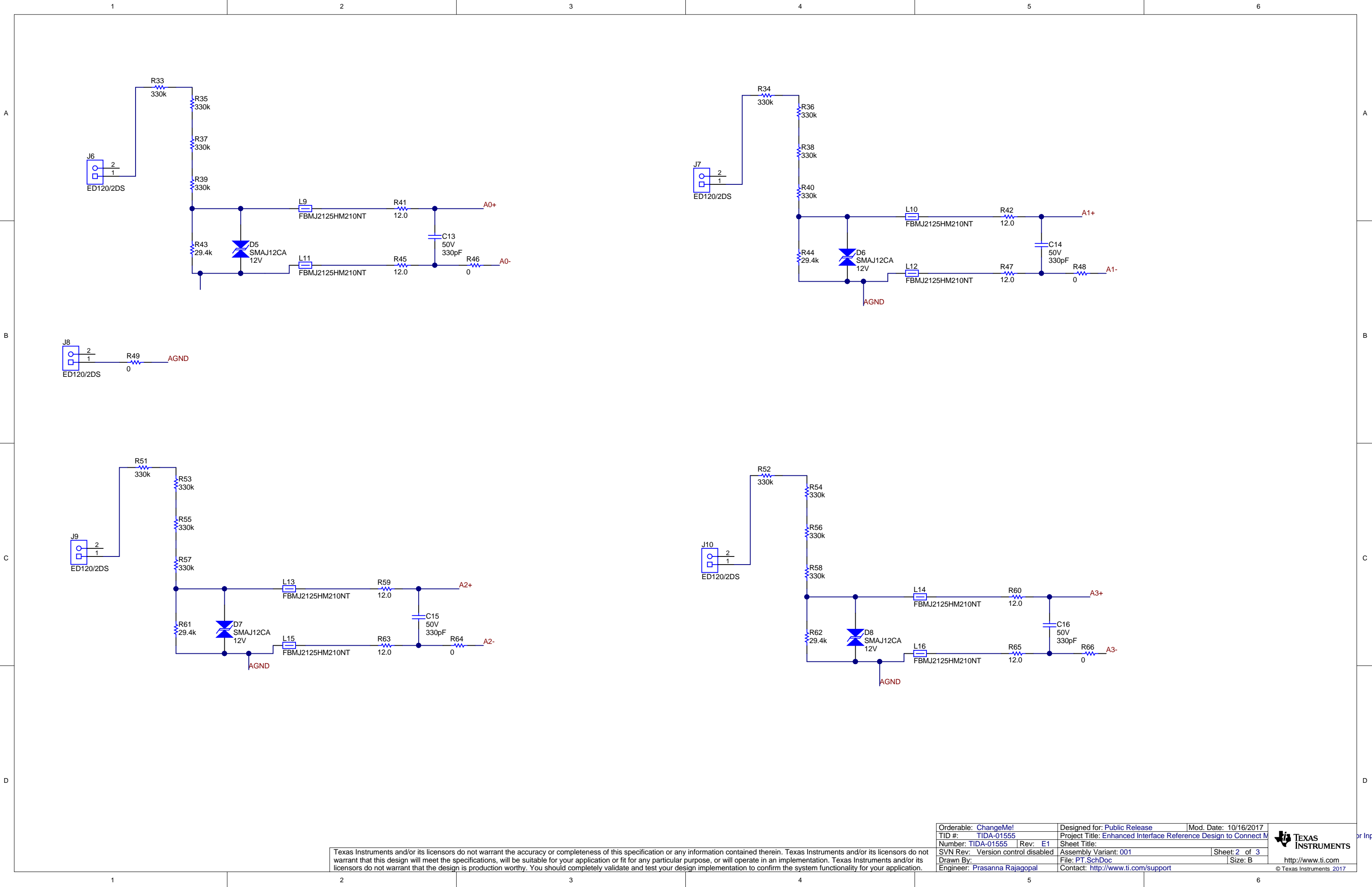


Copyright © 2017, Texas Instruments Incorporated

Texas Instruments and/or its licensors do not warrant the accuracy or completeness of this specification or any information contained therein. Texas Instruments and/or its licensors do not warrant that this design will meet the specifications, will be suitable for your application or fit for any particular purpose, or will operate in an implementation. Texas Instruments and/or its licensors do not warrant that the design is production worthy. You should completely validate and test your design implementation to confirm the system functionality for your application.

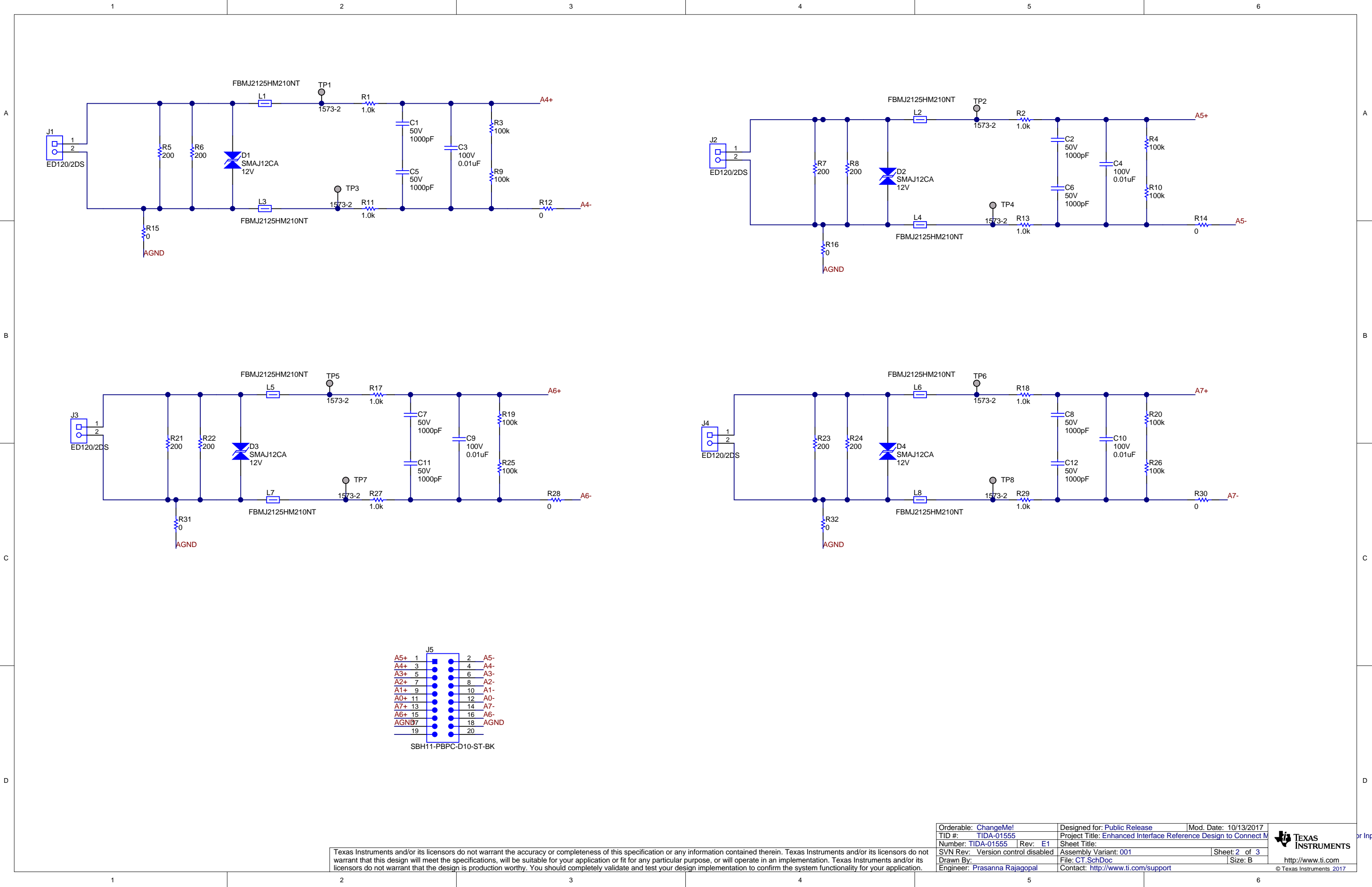
Orderable: ChangeMe!	Designed for: Public Release	Mod. Date: 11/28/2017
TID #: TIDA-01555	Project Title: Enhanced Interface Reference Design to Connect M	
Number: TIDA-01555	Rev: E1	Sheet Title:
SVN Rev: Version control disabled	Assembly Variant: 001	Sheet: 1 of 3
Drawn By:	File: CoverSheet.SchDoc	Size: B
Engineer: Prasanna Rajagopal	Contact: http://www.ti.com/support	

or Input E



Texas Instruments and/or its licensors do not warrant the accuracy or completeness of this specification or any information contained therein. Texas Instruments and/or its licensors do not warrant that this design will meet the specifications, will be suitable for your application or fit for any particular purpose, or will operate in an implementation. Texas Instruments and/or its licensors do not warrant that the design is production worthy. You should completely validate and test your design implementation to confirm the system functionality for your application.

Orderable: ChangeMe!	Designed for: Public Release	Mod. Date: 10/16/2017
TID #: TIDA-01555	Project Title: Enhanced Interface Reference Design to Connect M	
Number: TIDA-01555	Rev: E1	Sheet Title:
SVN Rev: Version control disabled	Assembly Variant: 001	Sheet: 2 of 3
Drawn By:	File: PT.SchDoc	Size: B
Engineer: Prasanna Rajagopal	Contact: http://www.ti.com/support	



Texas Instruments and/or its licensors do not warrant the accuracy or completeness of this specification or any information contained therein. Texas Instruments and/or its licensors do not warrant that this design will meet the specifications, will be suitable for your application or fit for any particular purpose, or will operate in an implementation. Texas Instruments and/or its licensors do not warrant that the design is production worthy. You should completely validate and test your design implementation to confirm the system functionality for your application.

Orderable: ChangeMe!	Designed for: Public Release	Mod. Date: 10/13/2017
TID #: TIDA-01555	Project Title: Enhanced Interface Reference Design to Connect M	
Number: TIDA-01555	Rev: E1	Sheet Title:
SVN Rev: Version control disabled	Assembly Variant: 001	Sheet: 2 of 3
Drawn By:	File: CT.SchDoc	Size: B
Engineer: Prasanna Rajagopal	Contact: http://www.ti.com/support	

1	2	3	4	5	6
A					A
B					B
C					C
D					D
1	2	3	4	5	6

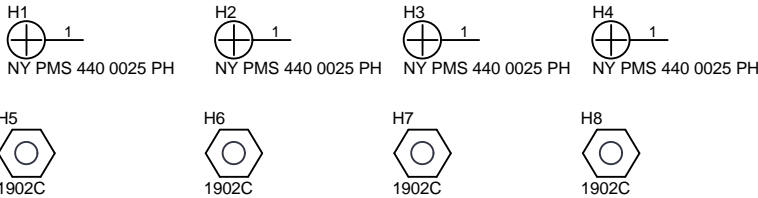
Texas Instruments and/or its licensors do not warrant the accuracy or completeness of this specification or any information contained therein. Texas Instruments and/or its licensors do not warrant that this design will meet the specifications, will be suitable for your application or fit for any particular purpose, or will operate in an implementation. Texas Instruments and/or its licensors do not warrant that the design is production worthy. You should completely validate and test your design implementation to confirm the system functionality for your application.

Orderable: ChangeMe!	Designed for: Public Release	Mod. Date: 10/6/2017
TID #: TIDA-01555	Project Title: Enhanced Interface Reference Design to Connect M	
Number: TIDA-01555	Rev: E1	Sheet Title:
SVN Rev: Version control disabled	Assembly Variant: 001	Sheet: 2 of 3
Drawn By:	File: BlankSheet.SchDoc	Size: B
Engineer: Prasanna Rajagopal	Contact: http://www.ti.com/support	



http://www.ti.com
© Texas Instruments 2017

or Input E



PCB Number: TIDA-01555

PCB Rev: E1

PCB

LOGO

Texas Instruments

PCB

LOGO

Pb-Free Symbol

PCB

LOGO

FCC disclaimer

TIDA-01555_sensor

PCB Label

Size: 0.65" x 0.20 "

Variant/Label Table	
Variant	Label Text
001	ChangeMe!
002	ChangeMe!