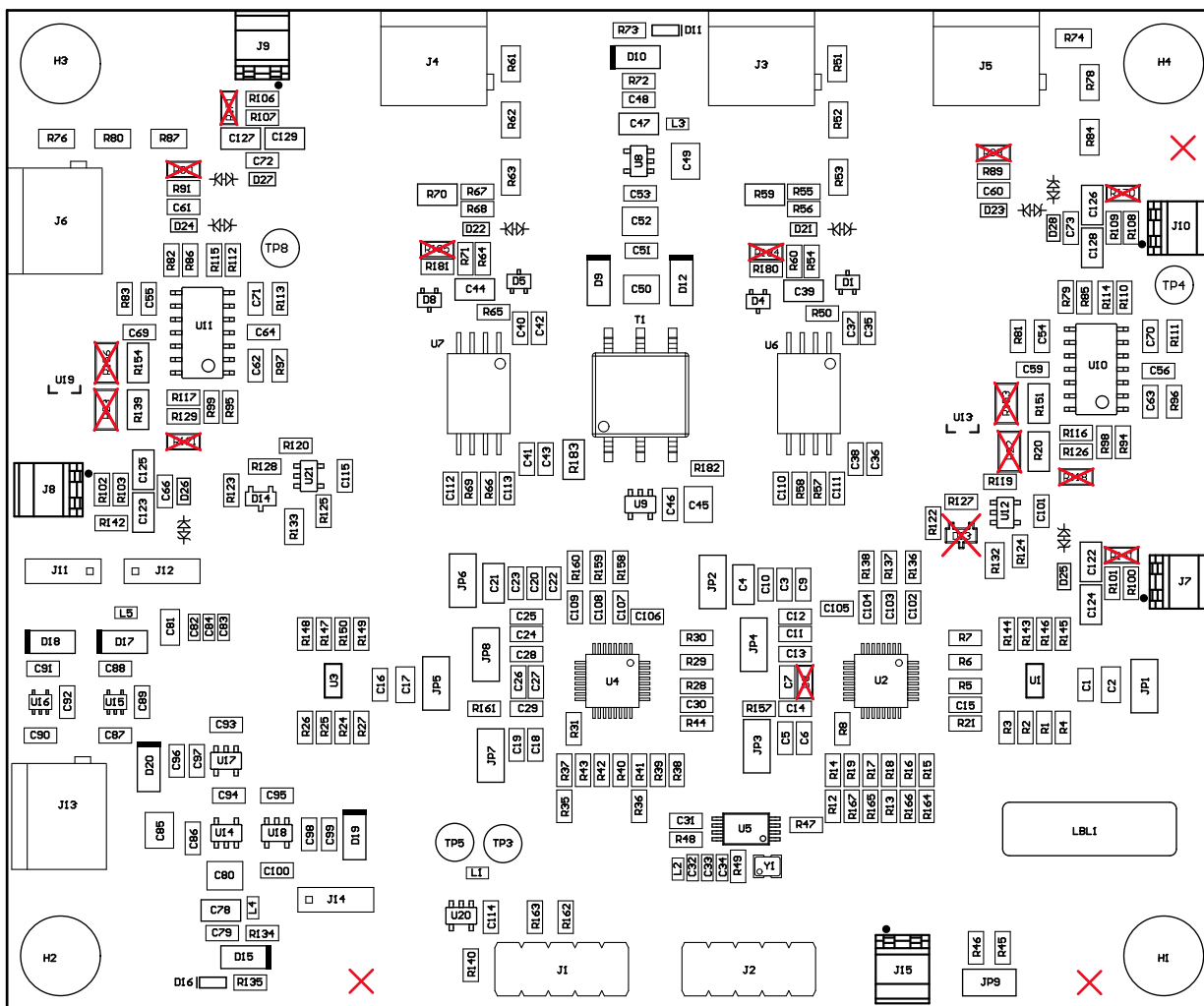


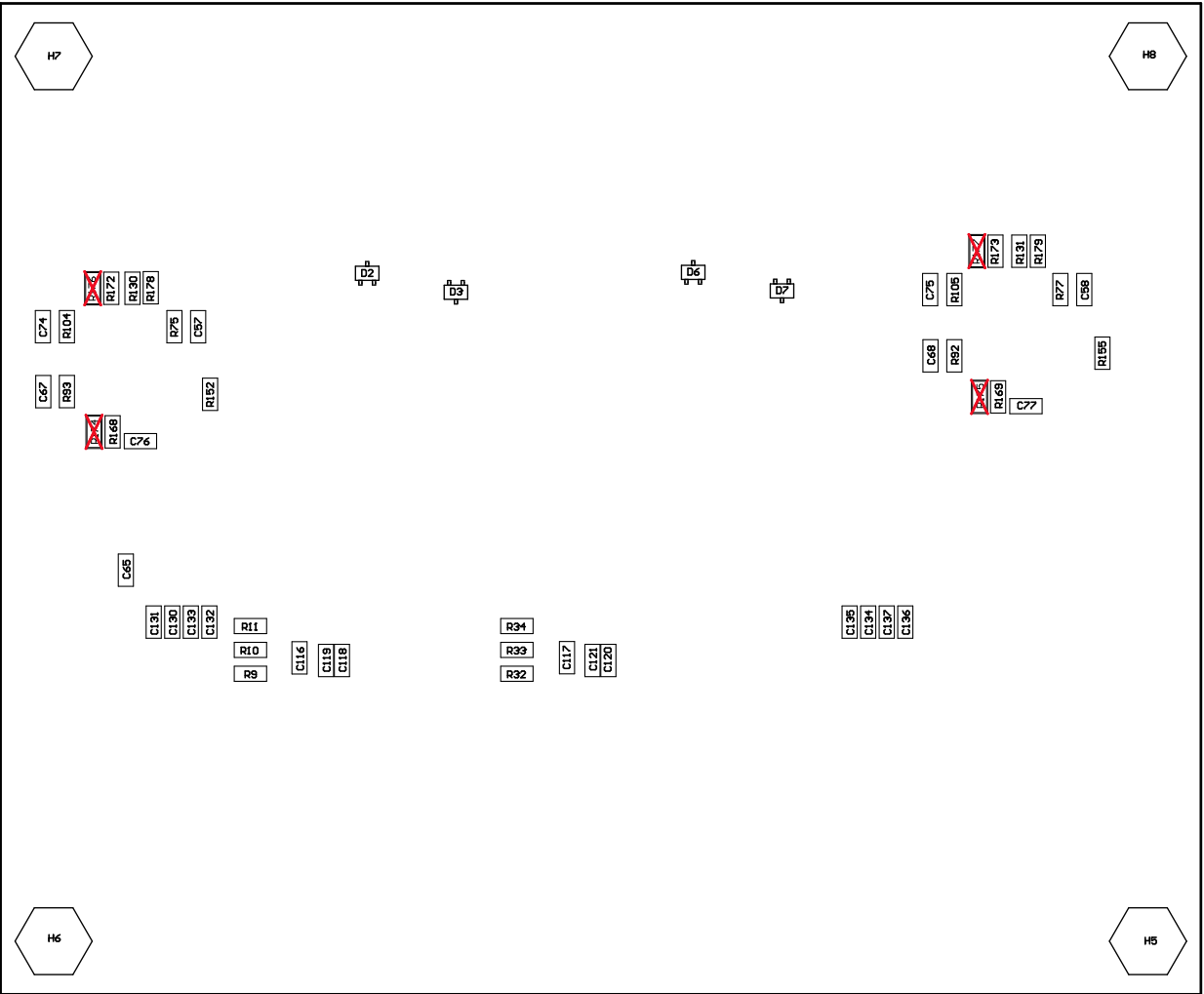
- Z21 ■ Install label in silkscreened box after final wash. Text shall be 8 pt font. Text shall be per the Label Table in the PDF schematic.
- Z22 ■ These assemblies are ESD sensitive, ESD precautions shall be observed.
- Z23 ■ These assemblies must be clean and free from flux and all contaminants. Use of no clean flux is not acceptable.
- Z24 ■ These assemblies must comply with workmanship standards IPC-A-610 Class 2, unless otherwise specified.



ASSEMBLY VARIANT:

001

PCB VIEWED FROM TOP SIDE	BOARD #:	TIDA-00810	REV:	E2	SUN REV:	Not In VersionControl
LAYER NAME =	M5 Assembly Top					
PLOT NAME =	Top Assembly Drawing	GENERATED :	7/5/2016	4:30:15 PM	TEXAS INSTRUMENTS	



COMPONENTS MARKED 'DNP' SHOULD NOT BE POPULATED.

ASSEMBLY VARIANT: 001

PCB VIEWED FROM BOTTOM SIDE	BOARD #:	TIDA-00810	REV:	E2	SUN REV:	Not In VersionControl
LAYER NAME = M6 Assembly bottom	IGNORE ->					
PLOT NAME = Bottom Assembly Drawing	GENERATED :	7/5/2016	4:30:17 PM	TEXAS INSTRUMENTS		