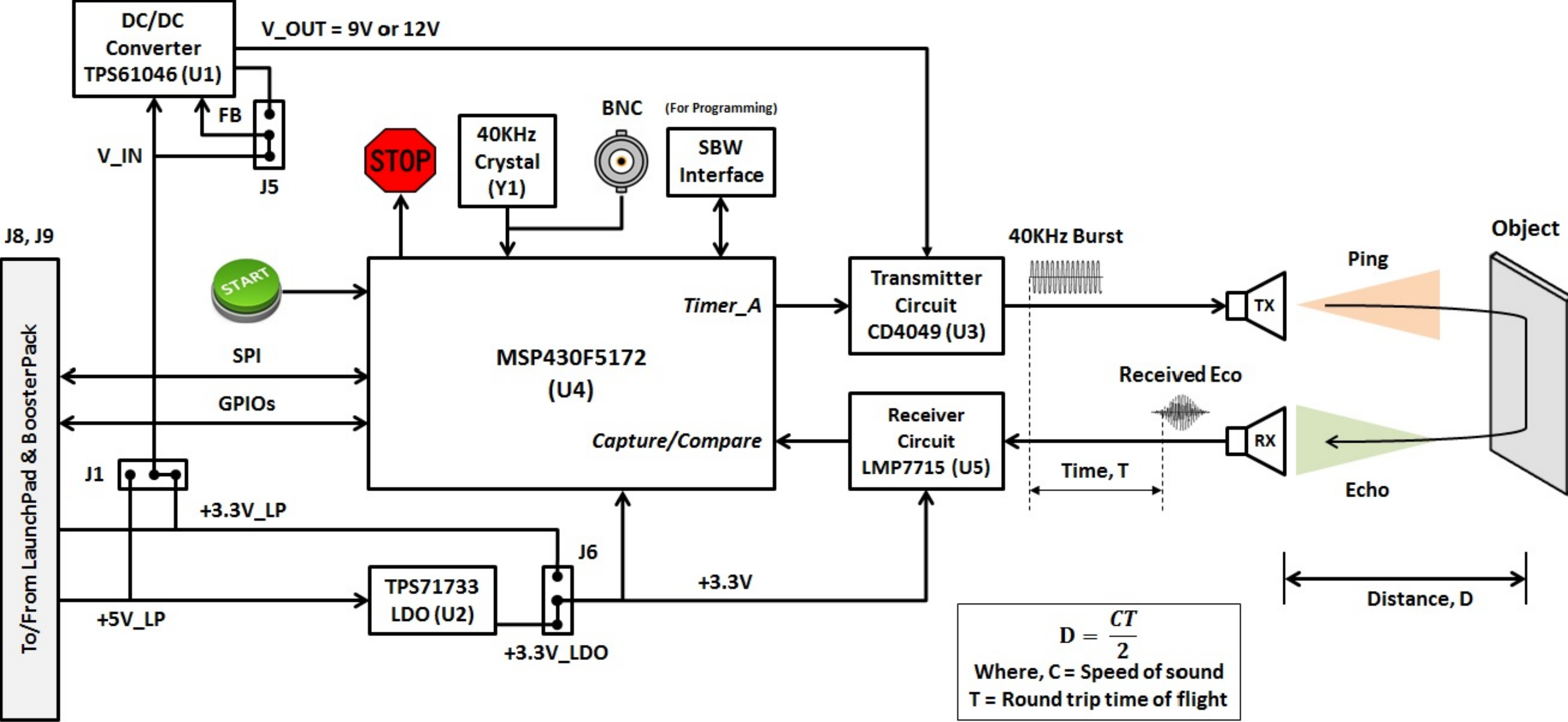


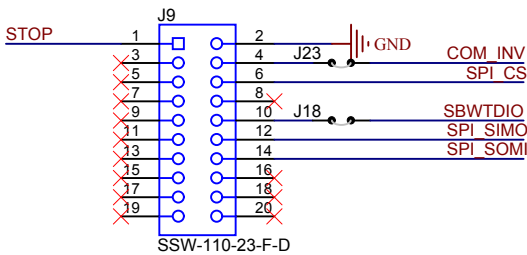
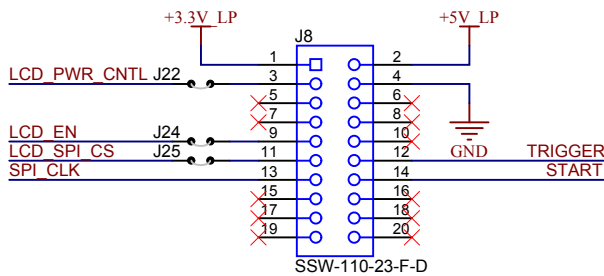
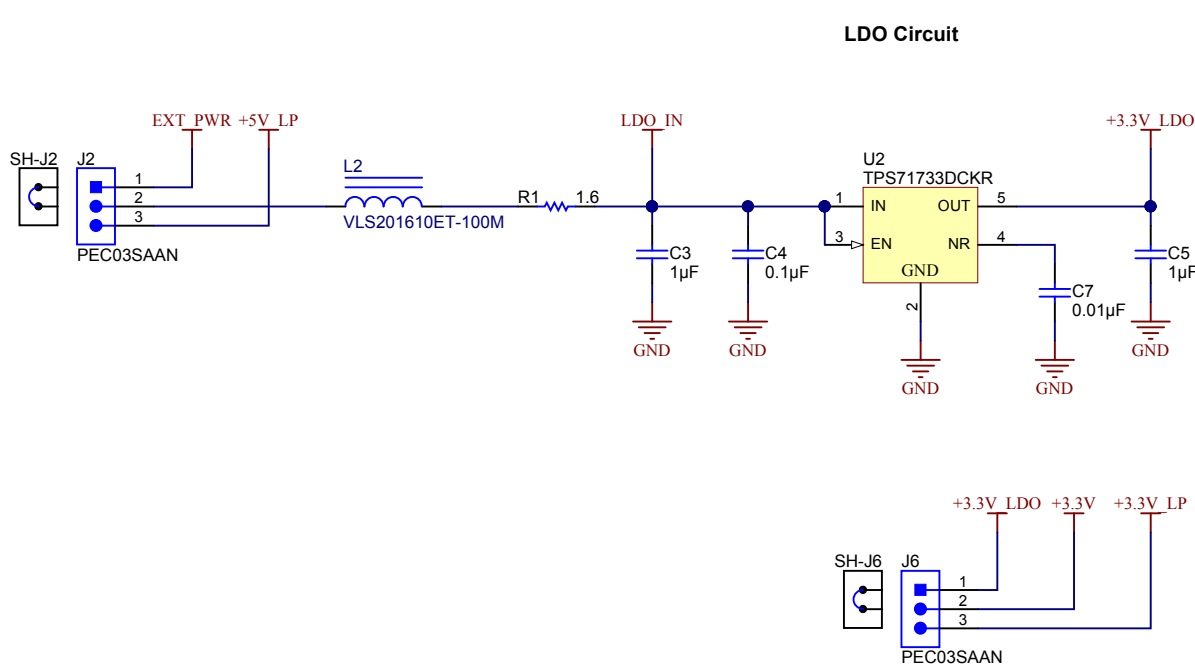
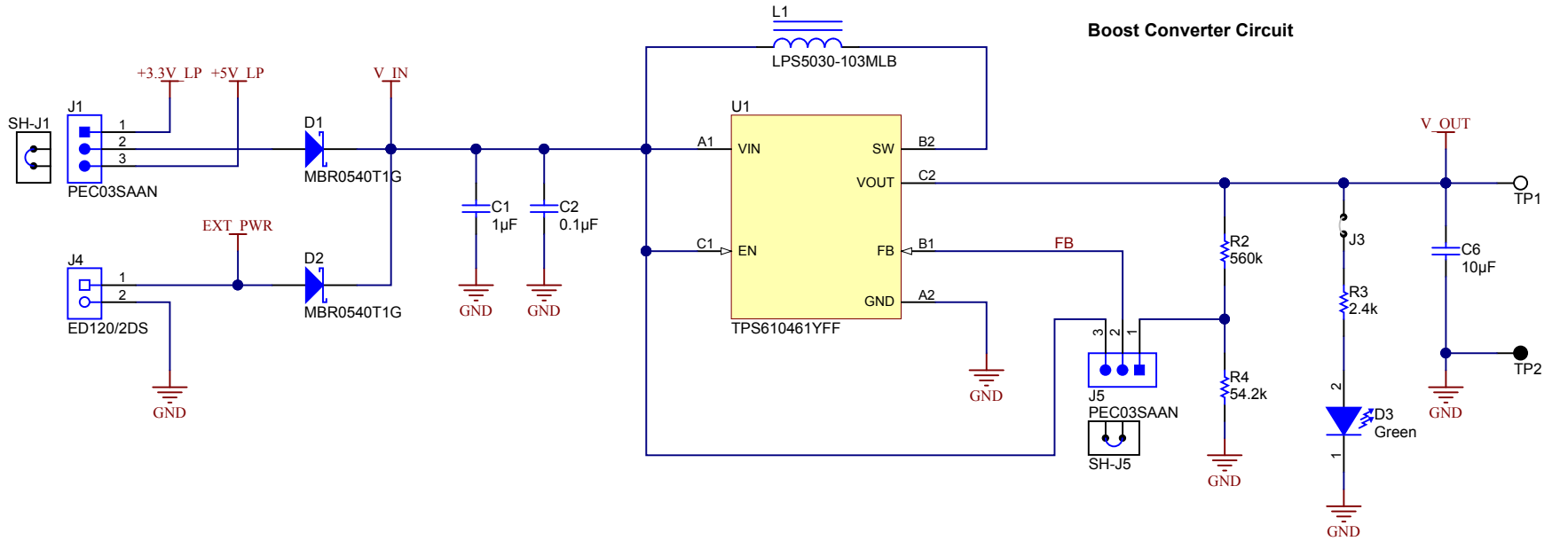
Revision History				
Rev	ECN #	Approved Date	Approved by	Notes
N/A	N/A	N/A	N/A	N/A



Texas Instruments and/or its licensors do not warrant the accuracy or completeness of this specification or any information contained therein. Texas Instruments and/or its licensors do not warrant that this design will meet the specifications, will be suitable for your application or fit for any particular purpose, or will operate in an implementation. Texas Instruments and/or its licensors do not warrant that the design is production worthy. You should completely validate and test your design implementation to confirm the system functionality for your application.

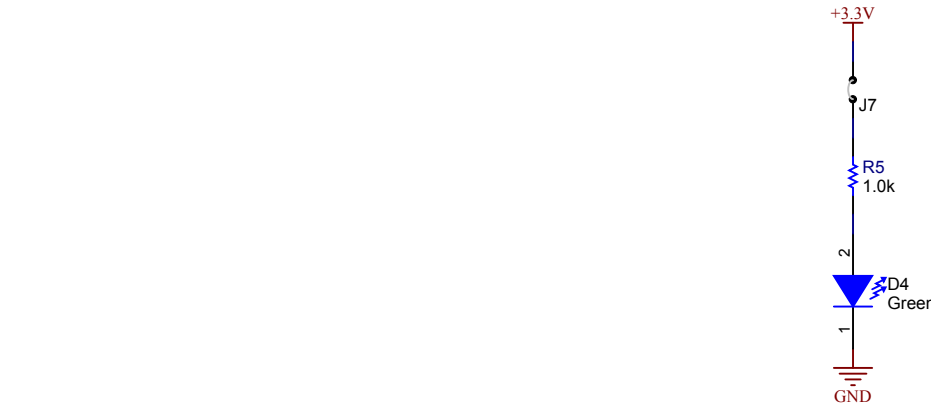
Orderable: N/A	Designed for: Public Release	Mod. Date: 9/2/2015
TID #: TIDA-00462	Project Title: MSP430 MCU based Ultrasonic Distance Measur	
Number: TIDA-00462	Rev: E1	Sheet Title: Block Diagram
SVN Rev: Version control disabled	Assembly Variant: 001	Sheet: 1 of 4
Drawn By: SY	File: TIDA-00462_E1_CoverSheet.SchDoc	Size: B
Engineer: FA&C	Contact: <a href="http://www.ti.com/support">http://www.ti.com/support</a>	

TEXAS INSTRUMENTS  
<http://www.ti.com>  
© Texas Instruments 2015



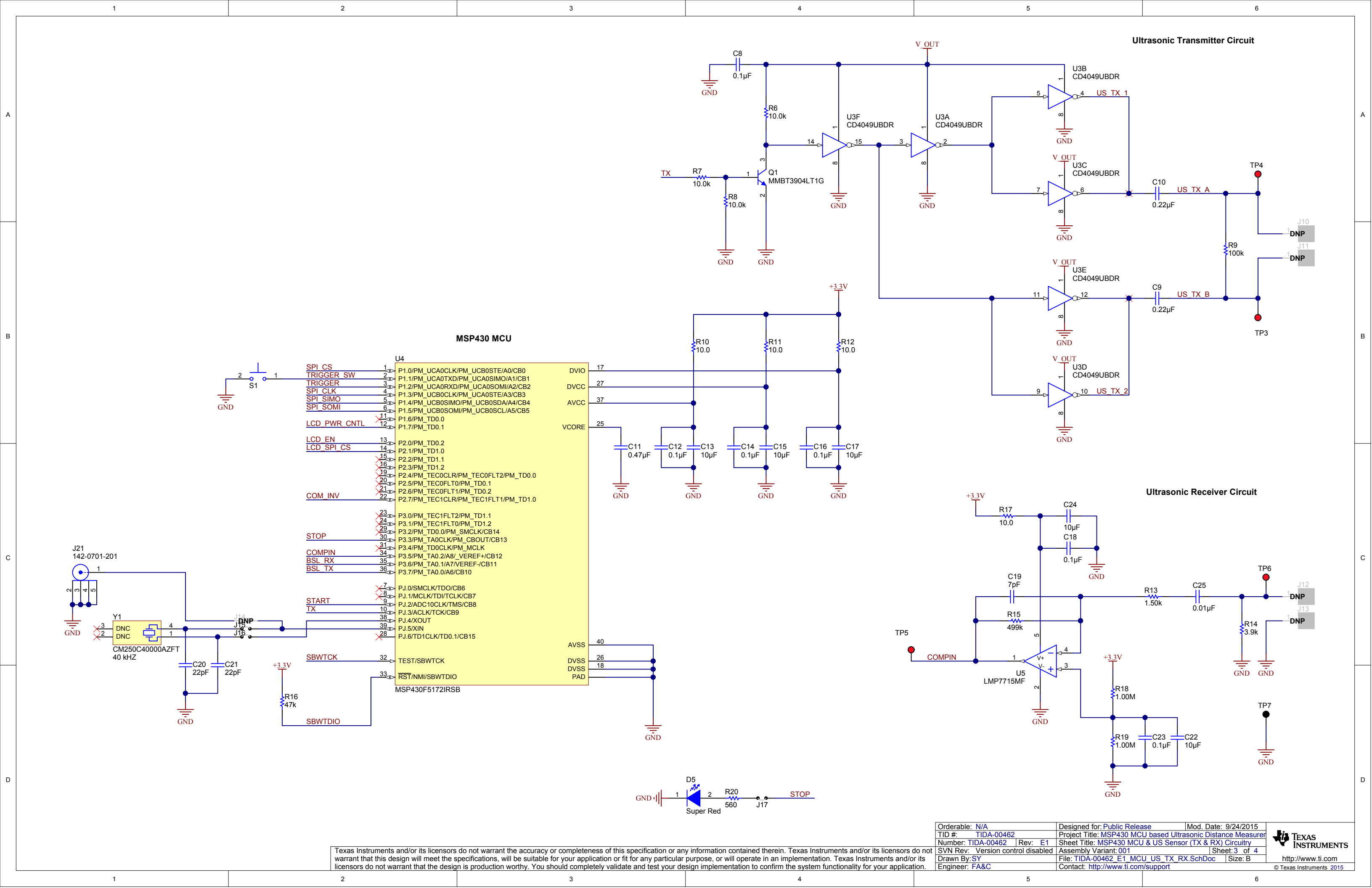
J8 TO BP PIN MAPPING			
BP-1 <-- J8-1	J8-2 --> BP-21		
BP-2 <-- J8-3	J8-4 --> BP-22		
BP-3 <-- J8-5	J8-6 --> BP-23		
BP-4 <-- J8-7	J8-8 --> BP-24		
BP-5 <-- J8-9	J8-10 --> BP-25		
BP-6 <-- J8-11	J8-12 --> BP-26		
BP-7 <-- J8-13	J8-14 --> BP-27		
BP-8 <-- J8-15	J8-16 --> BP-28		
BP-9 <-- J8-17	J8-18 --> BP-29		
BP-10 <-- J8-19	J8-20 --> BP-30		

J7 TO BP PIN MAPPING			
BP-40 <-- J7-1	J7-2 --> BP-20		
BP-39 <-- J7-3	J7-4 --> BP-19		
BP-38 <-- J7-5	J7-6 --> BP-18		
BP-37 <-- J7-7	J7-8 --> BP-17		
BP-36 <-- J7-9	J7-10 --> BP-16		
BP-35 <-- J7-11	J7-12 --> BP-15		
BP-34 <-- J7-13	J7-14 --> BP-14		
BP-33 <-- J7-15	J7-16 --> BP-13		
BP-32 <-- J7-17	J7-18 --> BP-12		
BP-31 <-- J7-19	J7-20 --> BP-11		



Note for user:

1. Ultrasonic measurement is issued either manually (TRIGGER\_SW) or via Launchpad (TRIGGER signal).
2. BoosterPack execute the state machine which triggers the TX signal to the ultrasound transducers.
3. When the ultrasound wave is received it is amplified and fed to the COMPIN.
4. If the echo signal is valid signal STOP LED lights up and same STOP signal is also fed to LaunchPad.



DNP

FID1

DNP

FID2

DNP

FID3

PCB Number: TIDA-00462

PCB Rev: E1

PCB

LOGO

Texas Instruments

PCB

LOGO

ESD Susceptible

Label Table	
Variant	Label Text
001	TIDA-00462 REV: E1

ZZ1

Label Assembly Note

This Assembly Note is for PCB labels only

ZZ2

Assembly Note

These assemblies are ESD sensitive, ESD precautions shall be observed.

ZZ3

Assembly Note

These assemblies must be clean and free from flux and all contaminants. Use of no clean flux is not acceptable.

ZZ4

Assembly Note

These assemblies must comply with workmanship standards IPC-A-610 Class 2, unless otherwise specified.