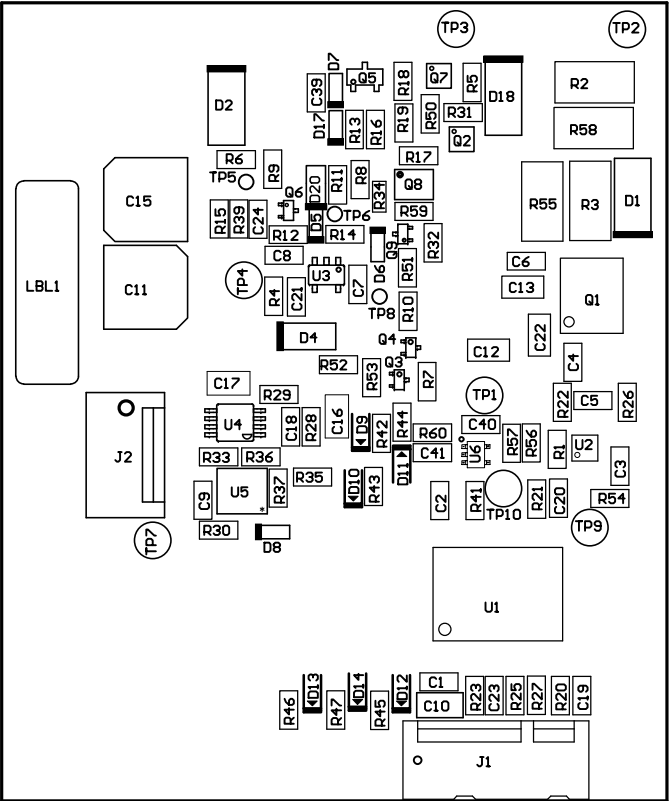


ALL ARTWORK VIEWED FROM TOP SIDE	BOARD #:TIDA-00448	REV: E3	SUN REV: Not In VersionControl
LAYER NAME = Top Paste			
PLOT NAME = TIDA-00448_E3.GTP	GENERATED : 8/24/2015 5:21:52 PM	TEXAS INSTRUMENTS	



ALL ARTWORK VIEWED FROM TOP SIDE	BOARD #:TIDA-00448	REV: E3	SUN REV: Not In VersionControl
LAYER NAME = Bottom Paste			
PLOT NAME = TIDA-00448_E3.GBP	GENERATED : 8/24/2015 5:21:52 PM		TEXAS INSTRUMENTS

- ZZ2 ■ These assemblies are ESD sensitive, ESD precautions shall be observed.
- ZZ3 ■ These assemblies must be clean and free from flux and all contaminants. Use of no clean flux is not acceptable.
- ZZ4 ■ These assemblies must comply with workmanship standards IPC-A-610 Class 2, unless otherwise specified.
- ZZ1 ■ Install label in silkscreened box after final wash. Text shall be 8 pt font. Text shall be per the Label Table in the PDF schematic.



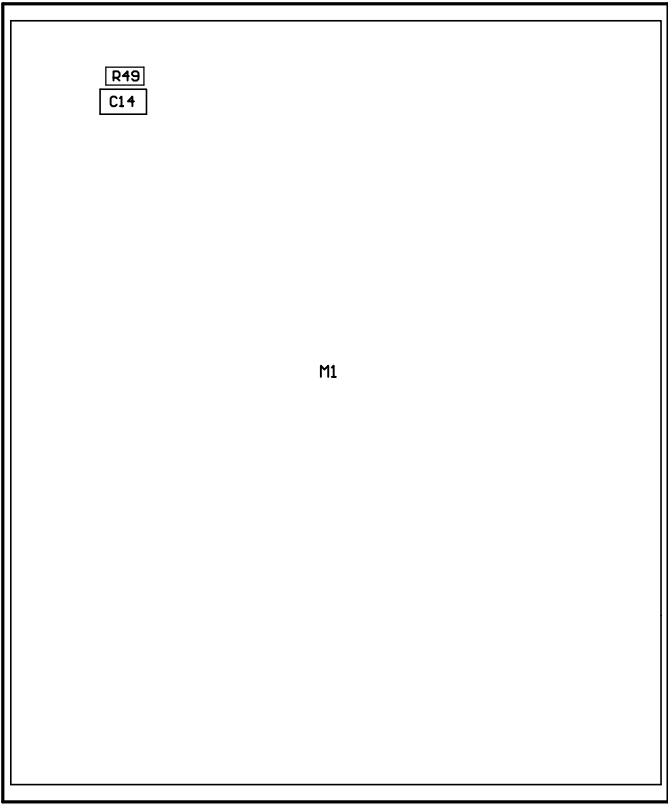
COMPONENTS MARKED 'DNP' SHOULD NOT BE POPULATED.

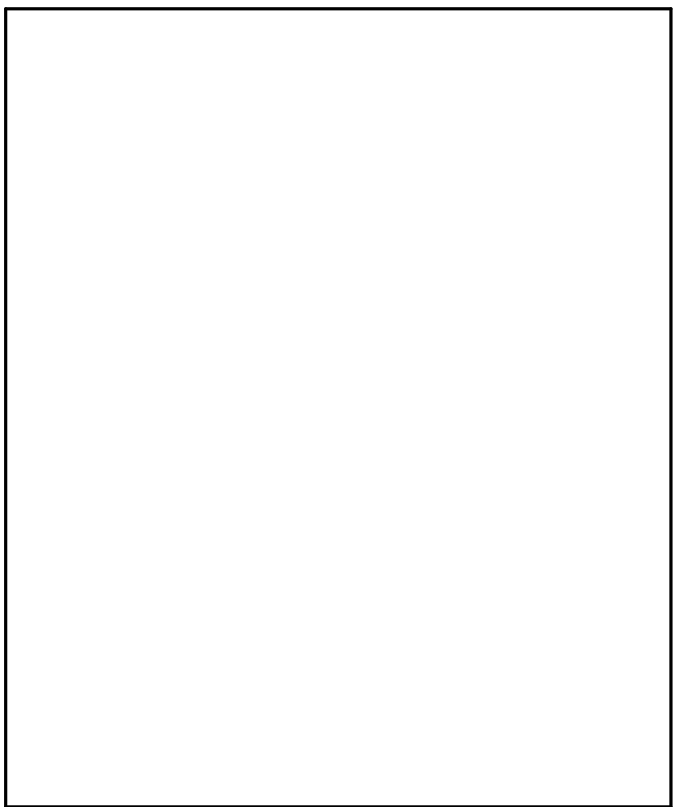
ASSEMBLY VARIANT: [No Variations]

PCB VIEWED FROM TOP SIDE	BOARD #: TIDA-00448	REV: E3	SUN REV: Not In VersionControl
IGNORE -> ASSEMBLY TOP			
PLOT NAME = TIDA-00448_E3.GM5	GENERATED : 8/24/2015 5:22:35 PM	TEXAS INSTRUMENTS	

ASSEMBLY VARIANT:
[No Variations]
COMPONENTS MARKED 'DNP' SHOULD NOT BE POPULATED.

PLOT NAME =		TIDA-0048_E3.GMC		GENERATED : 8/24/2018 2:55:38 PM		TEXAS INSTRUMENTS			
				IGNORE -> ASSEMBLY BOTTOM					
PCB VIEWED FROM BOTTOM SIDE				BOARD # : TIDA-0048		REV: E3		SUM REV: Not in VersionControl	





ALL ARTWORK VIEWED FROM TOP SIDE	BOARD #:TIDA-00448	REV: E3	SUN REV: Not In VersionControl
LAYER NAME = M1 Board Outline			
PLOT NAME = TIDA-00448_E3.GM1	GENERATED : 8/24/2015 12:31:18 PM		TEXAS INSTRUMENTS