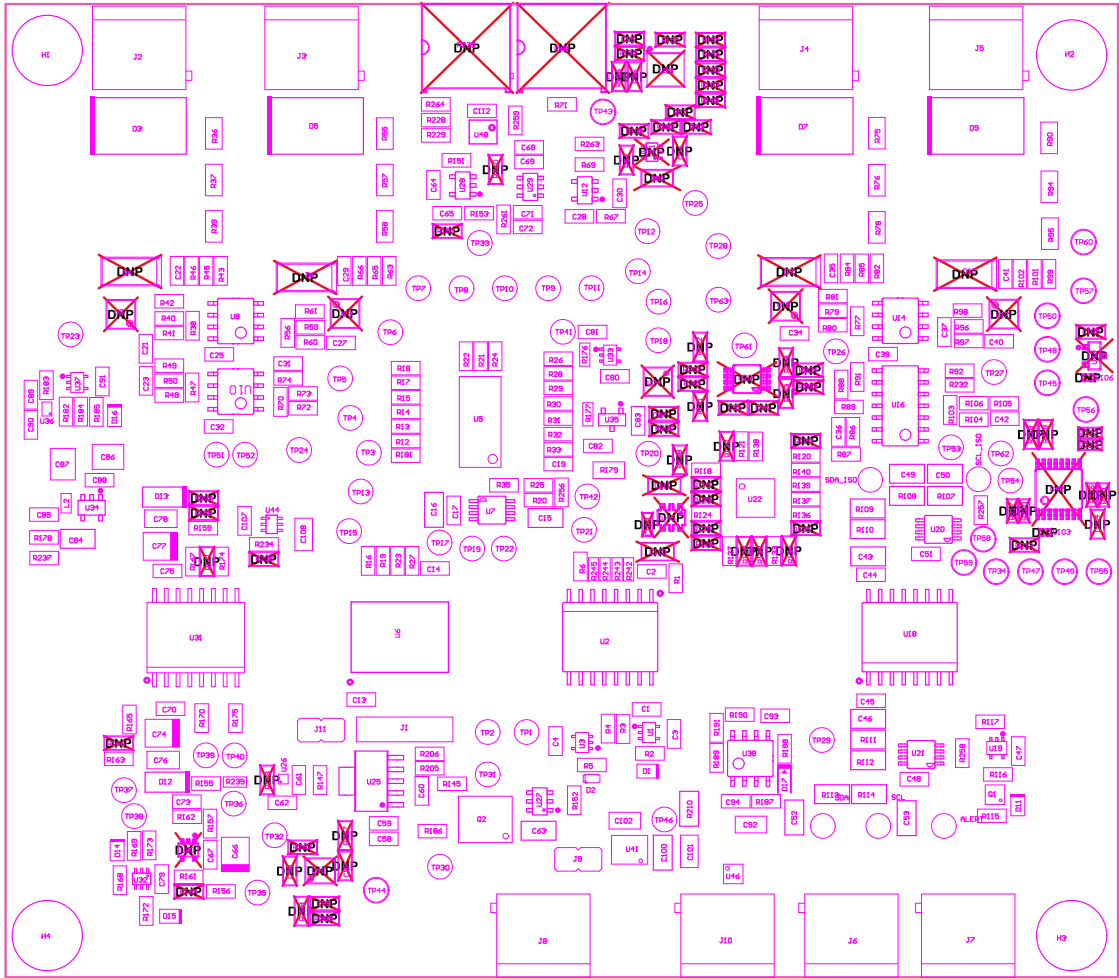


- 221 ■ Install label in silkscreened box after final wash. Text shall be 8 pt font. Text shall be per the Label Table in the PDF schematic.
- 222 ■ These assemblies are ESD sensitive, ESD precautions shall be observed.
- 223 ■ These assemblies must be clean and free from flux and all contaminants. Use of no clean flux is not acceptable.
- 224 ■ These assemblies must comply with workmanship standards IPC-A-610 Class 2, unless otherwise specified.

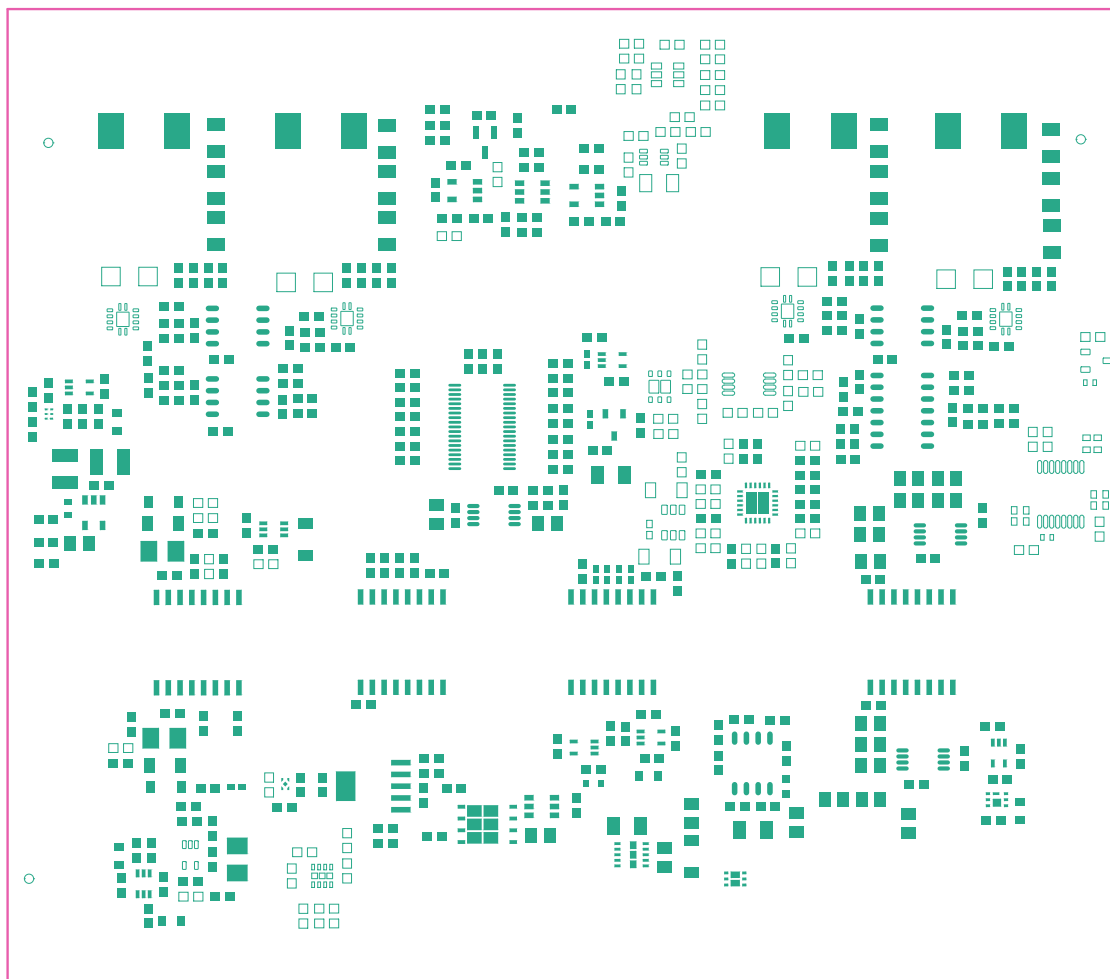


COMPONENTS MARKED "DNP" SHOULD NOT BE POPULATED.

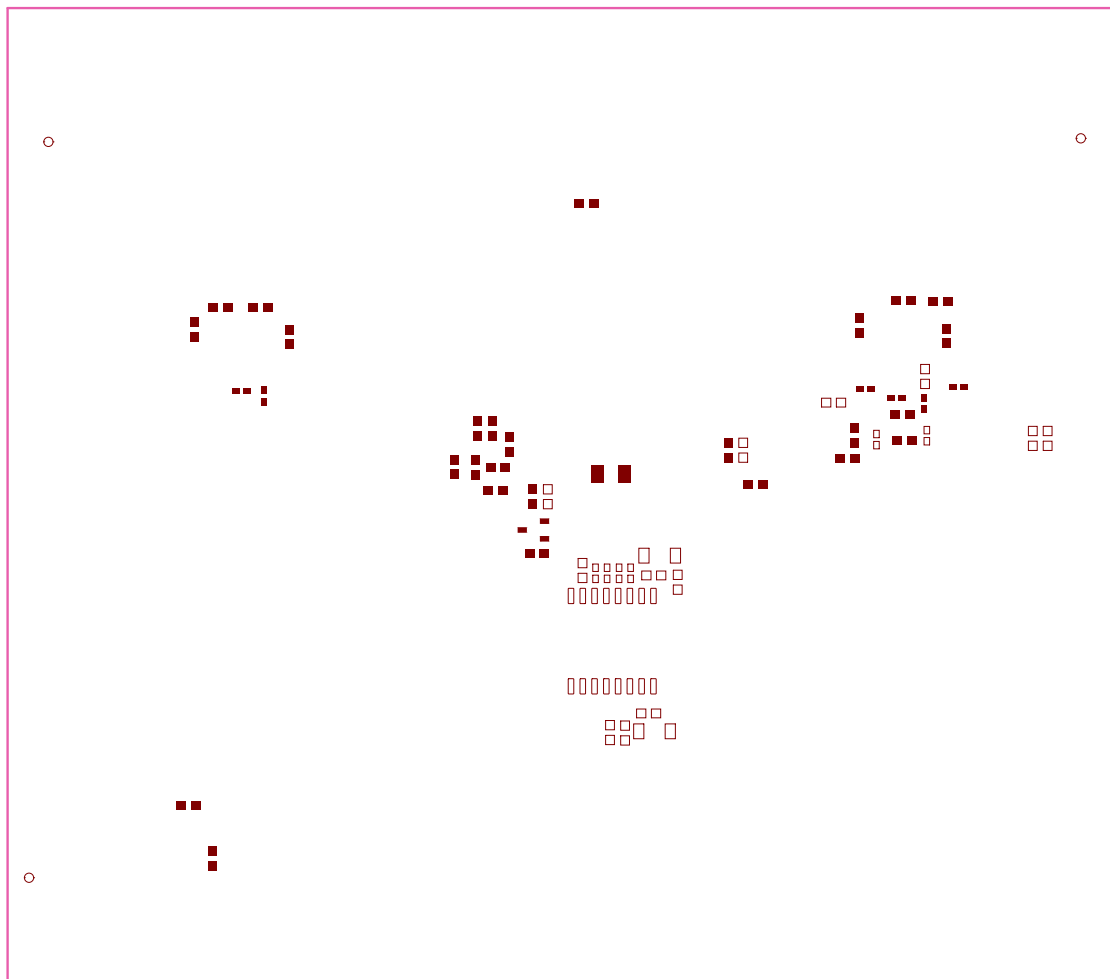
ASSEMBLY VARIANT:

001

PCB VEHICLED FROM TOP SIDE	BOARD #	TIDA-00420_ADC_R1H	REV	E2	SUN REV	Not In VersionControl
LAYER NAME =	HS Assembly Top	TID #	00420			
PLOT NAME =	Top LayerAssembly Drawing	GENERATED	3/5/2021	2:50:02 PM	TEXAS INSTRUMENTS	



Top Paste



Bottom Paste

[illegible]