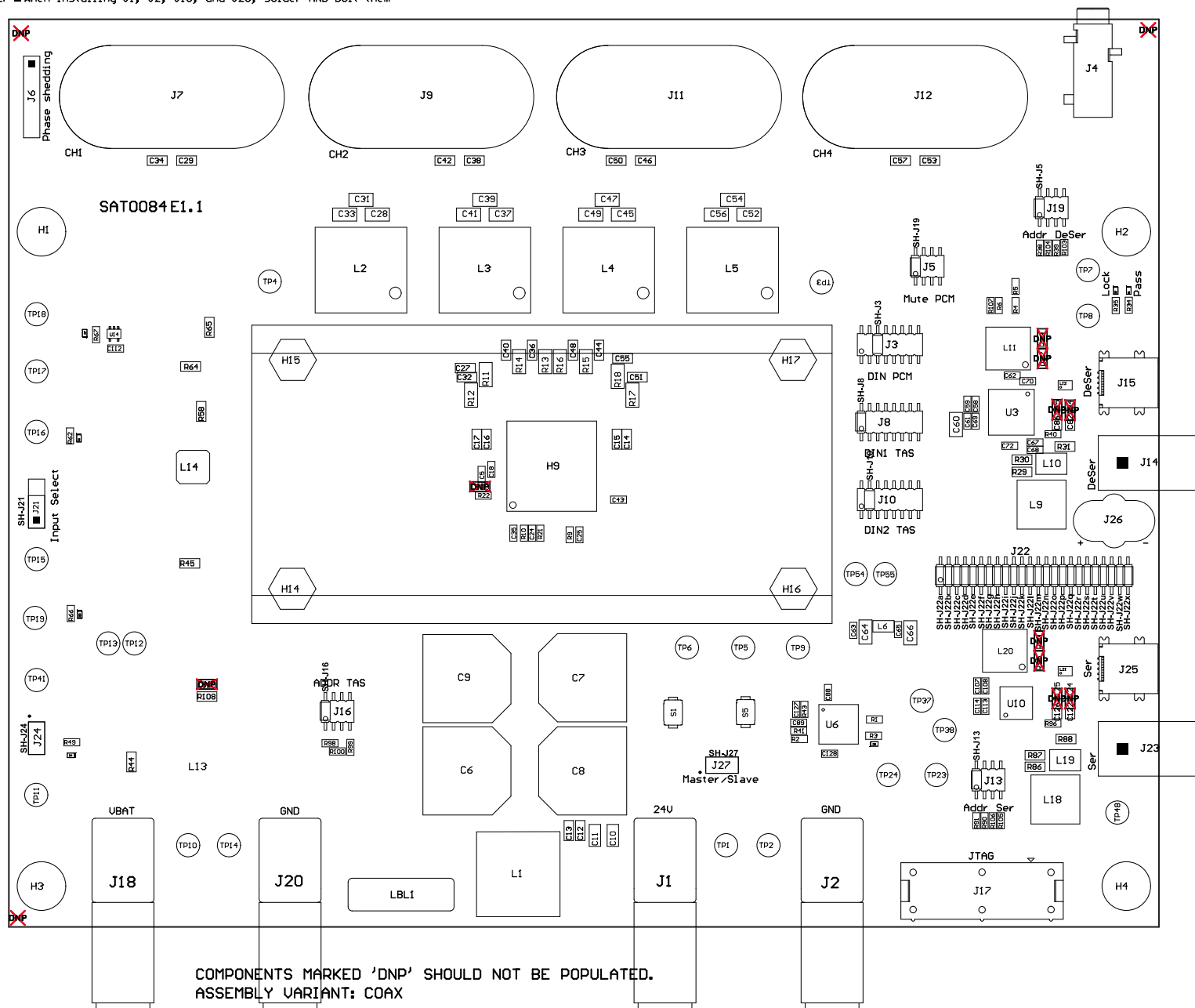
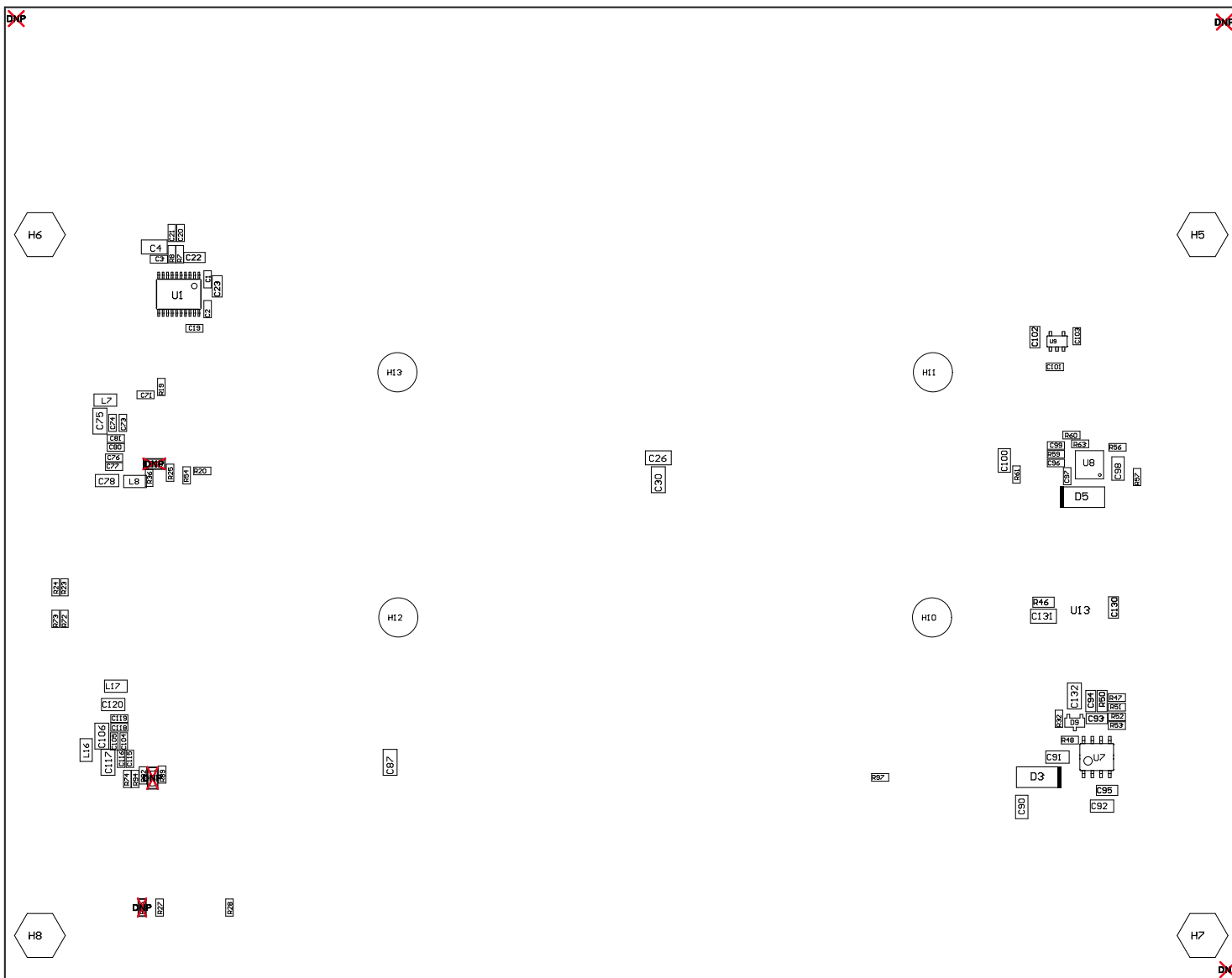


- Z21 ■ Install label in silkscreened box after final wash. Text shall be 8 pt font. Text shall be per the Label Table in the PDF schematic.
 Z22 ■ These assemblies are ESD sensitive, ESD precautions shall be observed.
 Z23 ■ These assemblies must be clean and free from flux and all contaminants. Use of no clean flux is not acceptable.
 Z24 ■ These assemblies must comply with workmanship standards IPC-A-610 Class 2, unless otherwise specified.
 Z25 ■ Apply a thin layer of heatsink grease on top of U2 before installing heatsink
 Z26 ■ When installing J7, J8, J11, and J12, do not install the bottom-side insulator. Nuts must contact bottom copper pads.
 Z27 ■ When installing J1, J2, J18, and J20, solder AND bolt them



PCB VIEWED FROM TOP SIDE	BOARD #: SAT0084	REV: E1.1	SUN REV: Not In VersionControl
IGNORE -> Top Overlay			
PLOT NAME = Top Assembly Drawing	GENERATED : 7/10/2014 11:09:35 AM	TEXAS INSTRUMENTS	



COMPONENTS MARKED 'DNP' SHOULD NOT BE POPULATED.
 ASSEMBLY VARIANT: COAX

PCB VIEWED FROM BOTTOM SIDE	BOARD #: SAT0084	REV: E1.1	SUN REV: Not In VersionControl
	IGNORE -> µ61rev0 motto8		
PLOT NAME = Bottom Assembly Drawing	GENERATED : 7/10/2014 11:09:36 AM		TEXAS INSTRUMENTS