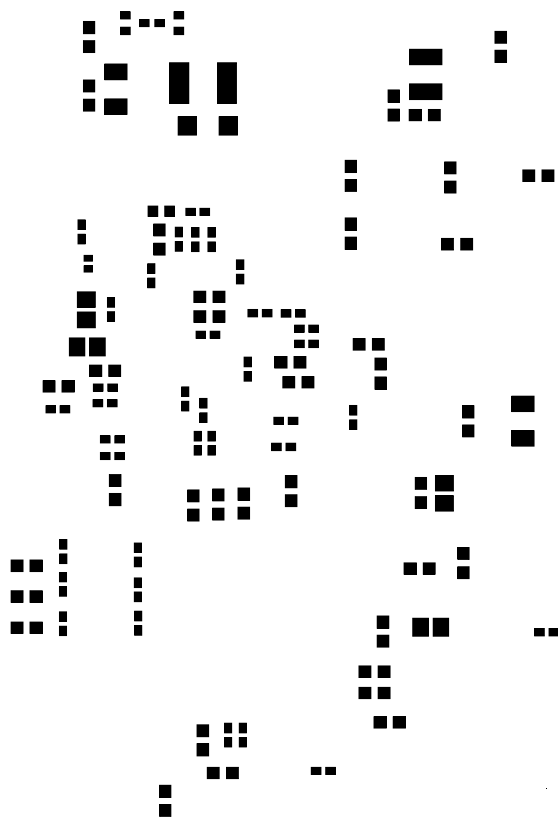
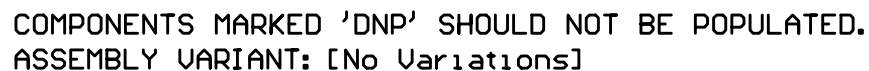


ALL ARTWORK VIEWED FROM TOP SIDE	BOARD #:	REV: E1	SUN REV: Not In VersionControl
LAYER NAME = Top Paste	TIDA-00226 (ISE5001)		
PLOT NAME = ISE5001.GTP	GENERATED:	6/25/2014 6:48:53 PM	TEXAS INSTRUMENTS

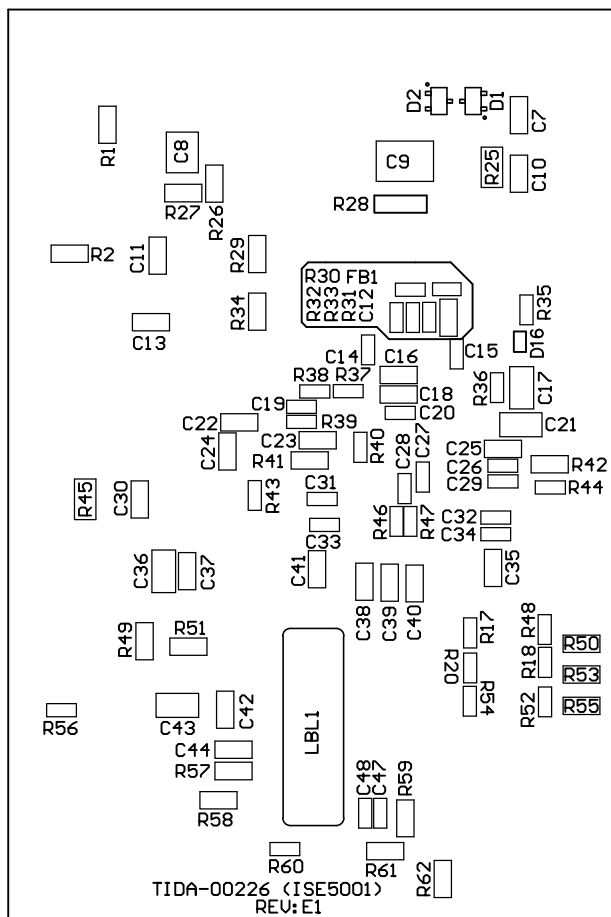


ALL ARTWORK VIEWED FROM TOP SIDE	BOARD #:	REV: E1	SUN REV: Not In VersionControl
LAYER NAME = Bottom Paste	TIDA-00226 (ISE5001)		
PLOT NAME = ISE5001.GBP	GENERATED:	6/25/2014 6:48:54 PM	TEXAS INSTRUMENTS

ZZ2 ■ These assemblies must comply with workmanship standards IPC-A-610 Class 2, unless otherwise specified.

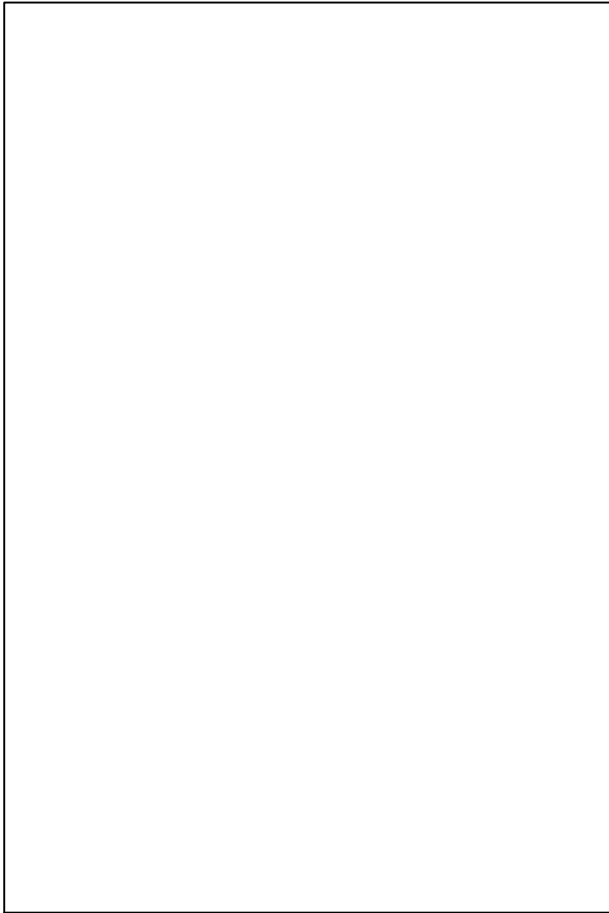


PCB VIEWED FROM TOP SIDE	BOARD #:	REV:E1	SUN REV: Not In VersionControl
LAYER NAME = ASSEMBLY TOP	TIDA-00226 (ISE5001)		
PLOT NAME= ISE5001.GM5	GENERATED : 6/25/2014 6:44:49 PM		TEXAS INSTRUMENTS



COMPONENTS MARKED 'DNP' SHOULD NOT BE POPULATED.  
ASSEMBLY VARIANT: [No Variations]

PCB VIEWED FROM BOTTOM SIDE	BOARD #:	REV:E1	SUN REV: Not In VersionControl
LAYER NAME = ASSEMBLY BOTTOM	TIDA-00226 (ISE5001)		
PLOT NAME=ISE5001.GM6	GENERATED:	6/25/2014 6:44:49 PM	TEXAS INSTRUMENTS



ALL ARTWORK VIEWED FROM TOP SIDE	BOARD #:	REV: E1	SUN REV: Not In VersionControl
LAYER NAME = M1 Board Outline	TIDA-00226 (ISE5001)		
PLOT NAME = ISE5001.GM1	GENERATED:	6/25/2014 6:48:54 PM	TEXAS INSTRUMENTS