

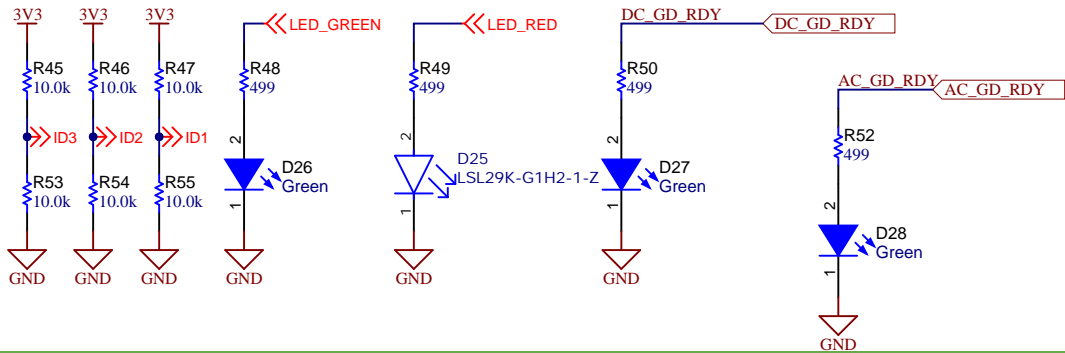
Texas Instruments and/or its licensors do not warrant the accuracy or completeness of this specification or any information contained therein. Texas Instruments and/or its licensors do not warrant that this design will meet the specifications, will be suitable for your application or fit for any particular purpose, or will operate in an implementation. Texas Instruments and/or its licensors do not warrant that the design is production worthy. You should completely validate and test your design implementation to confirm the system functionality for your application.

Orderable: NA	Designed for: Public Release	Mod. Date: 03/06/2026
TID #: TIDA-011012-MV	Project Title: Change in menu Project Options	Parameter
Number: TIDA-011012-MV Rev: E1	Sheet Title:	
SVN Rev: 6965	Assembly Variant: [No Variations]	Sheet: 2 of 11
Drawn By:	File: TIDA-011012-MV Power Conversion.SchDoc	Size: B
Engineer: A. Lechner/ R. Ruffo	Contact: http://www.ti.com/support	

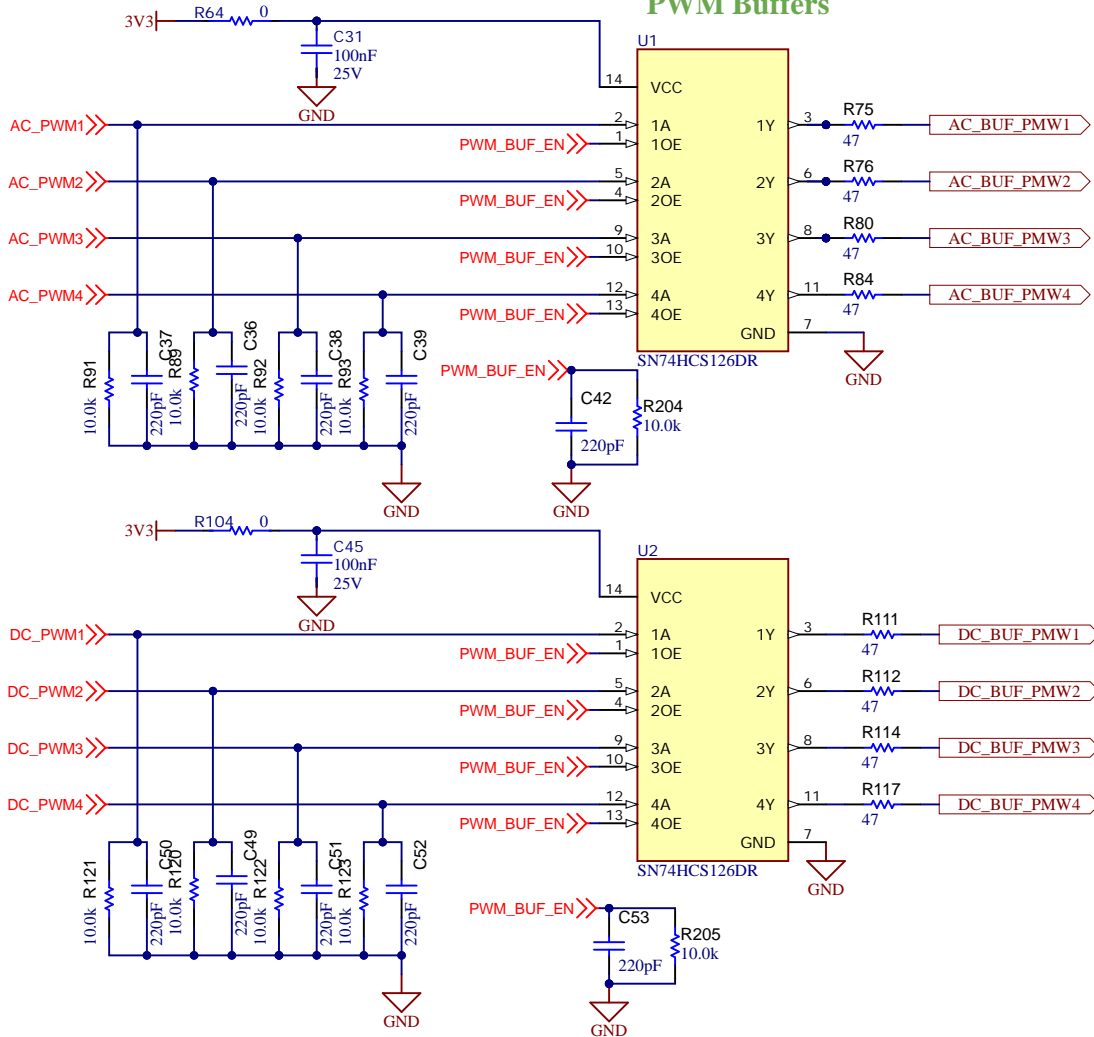


© Texas Instruments 2026

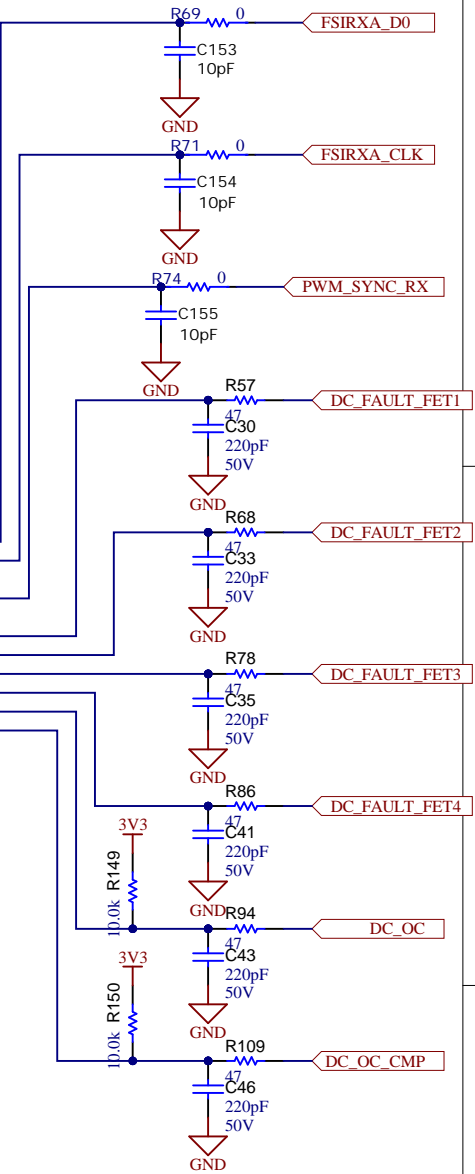
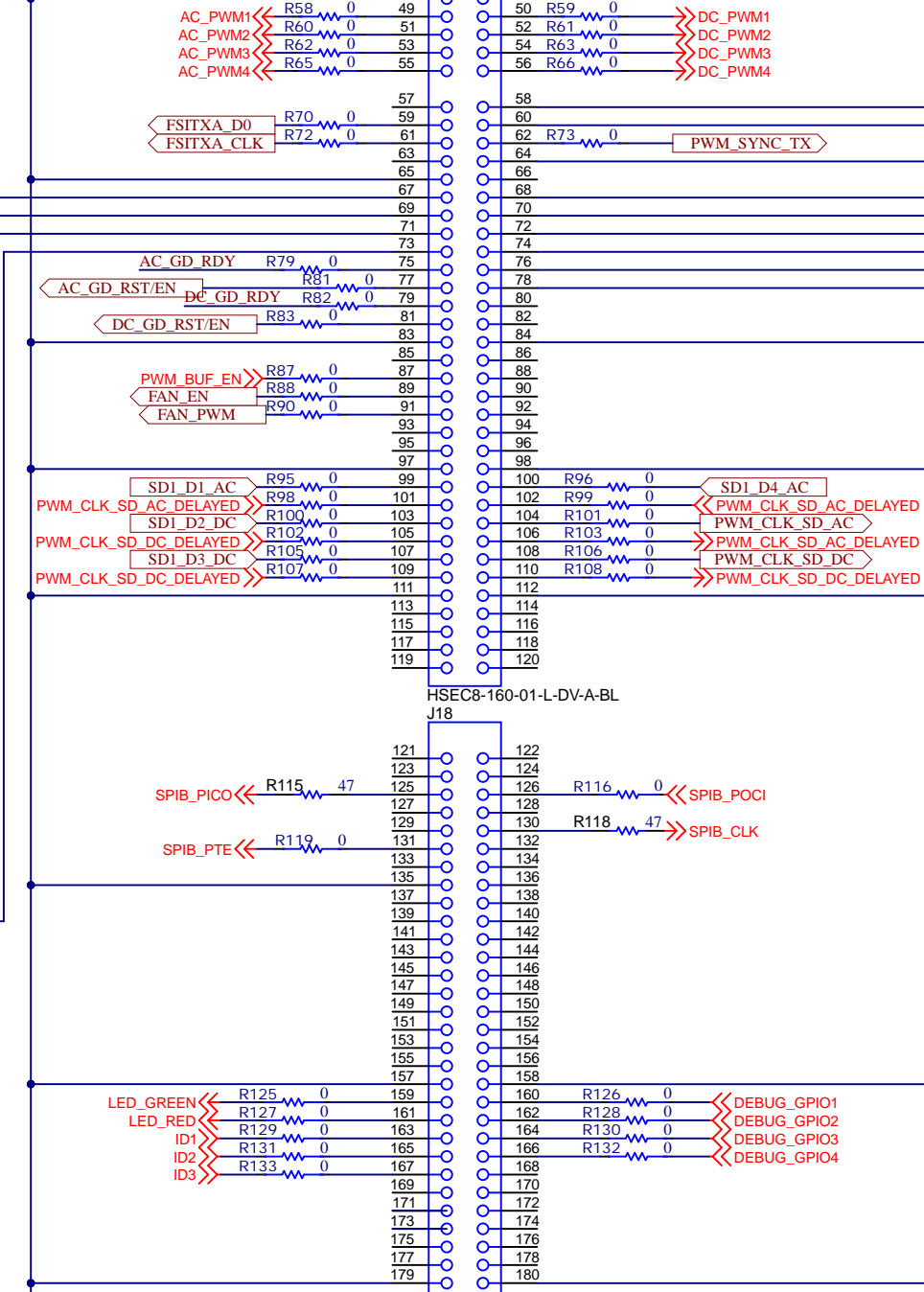
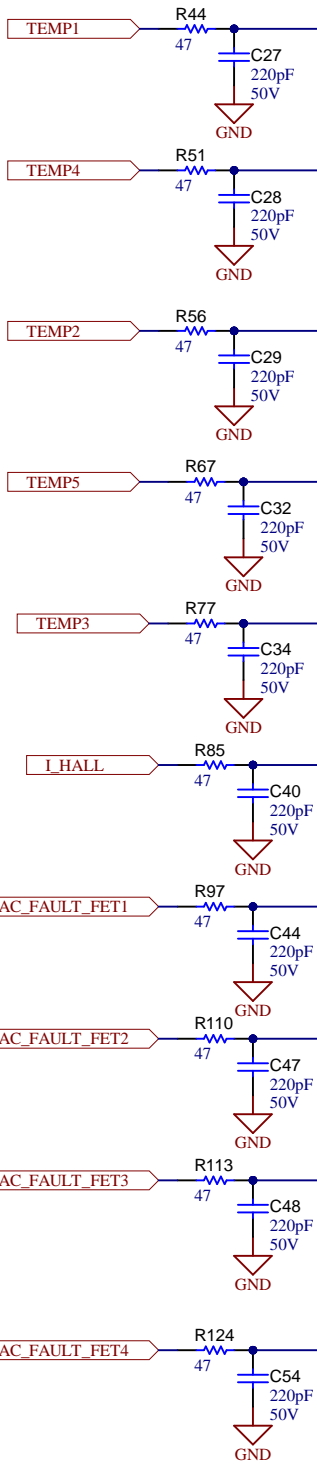
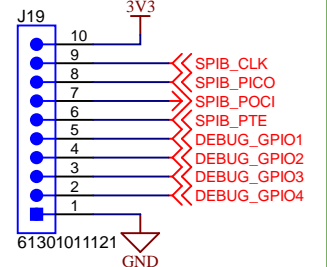
Board Identification & Status



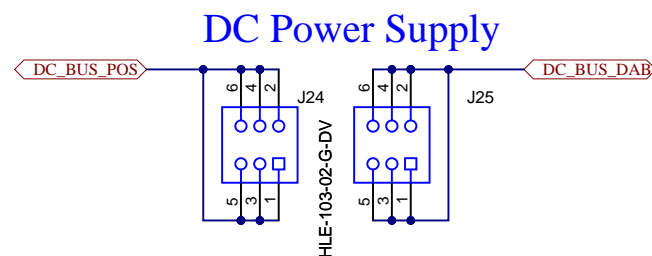
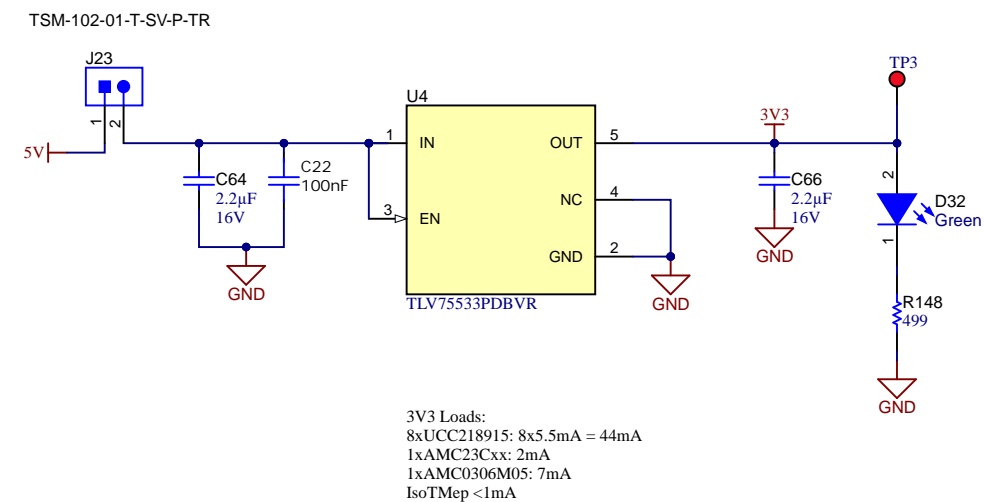
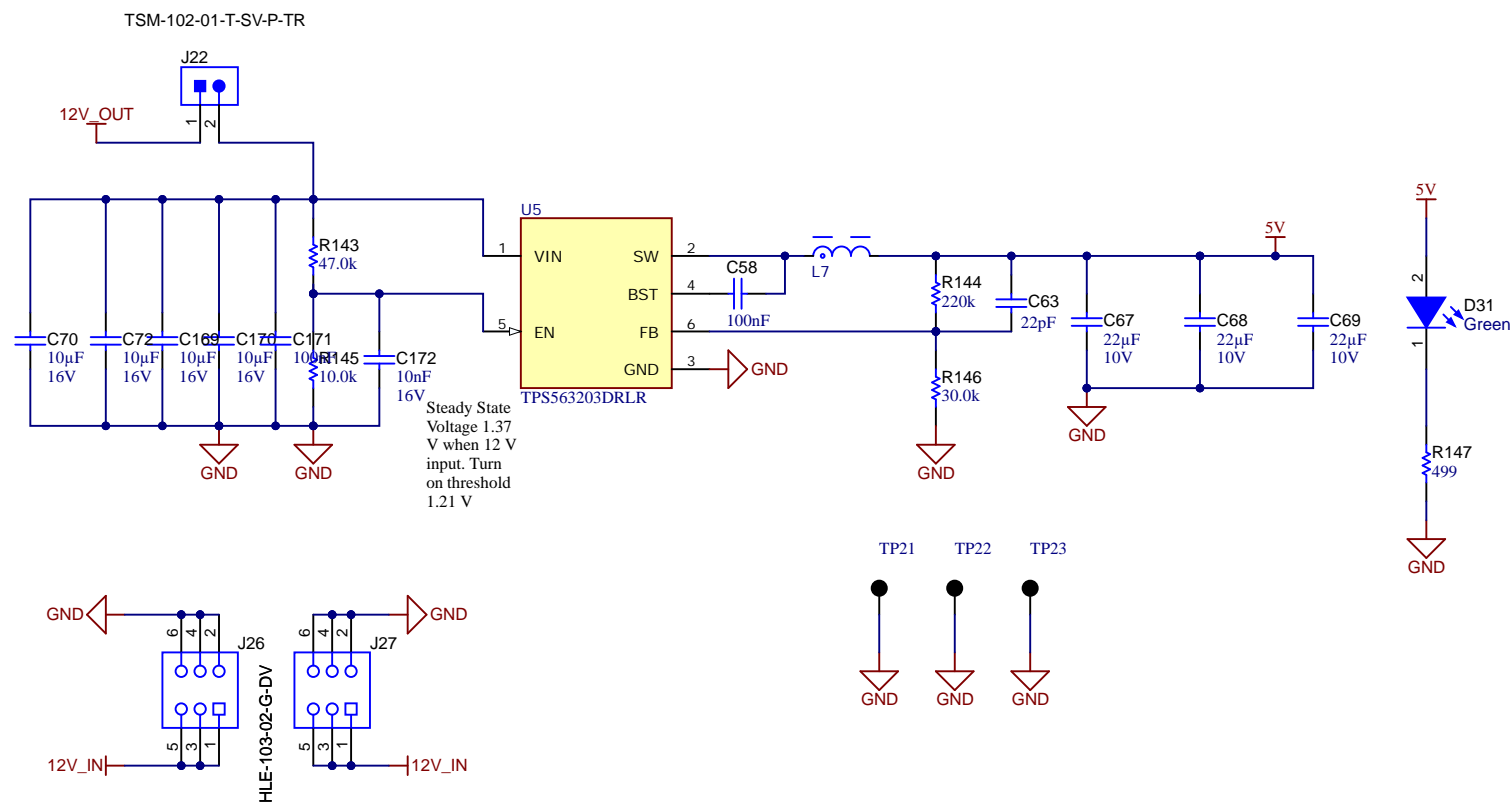
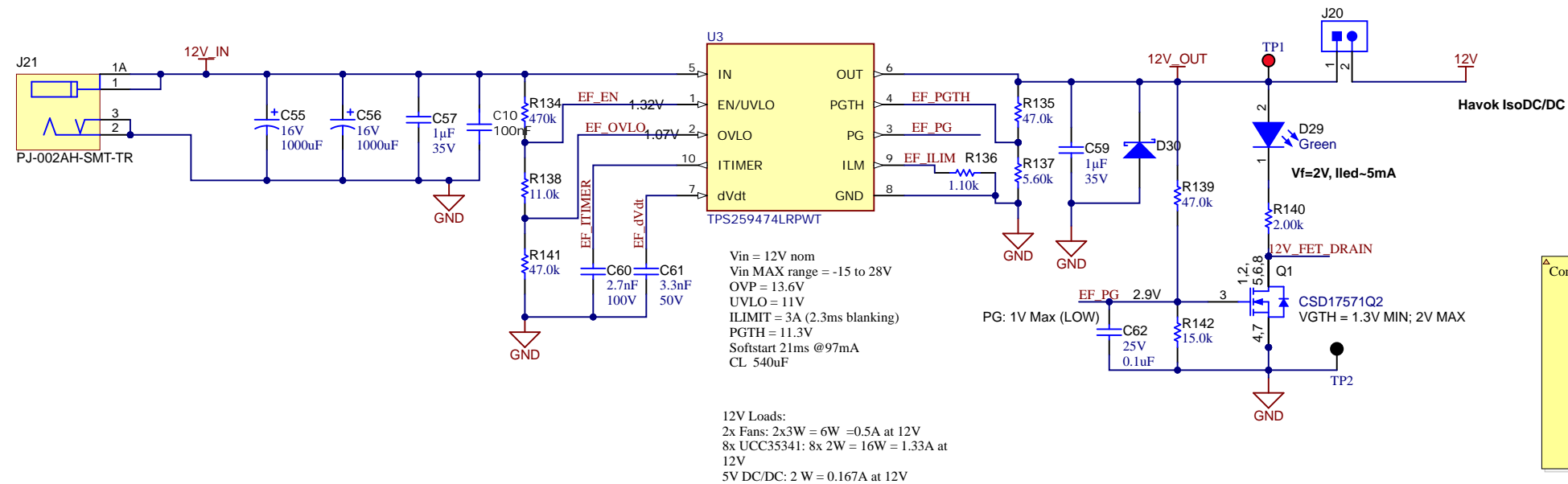
PWM Buffers

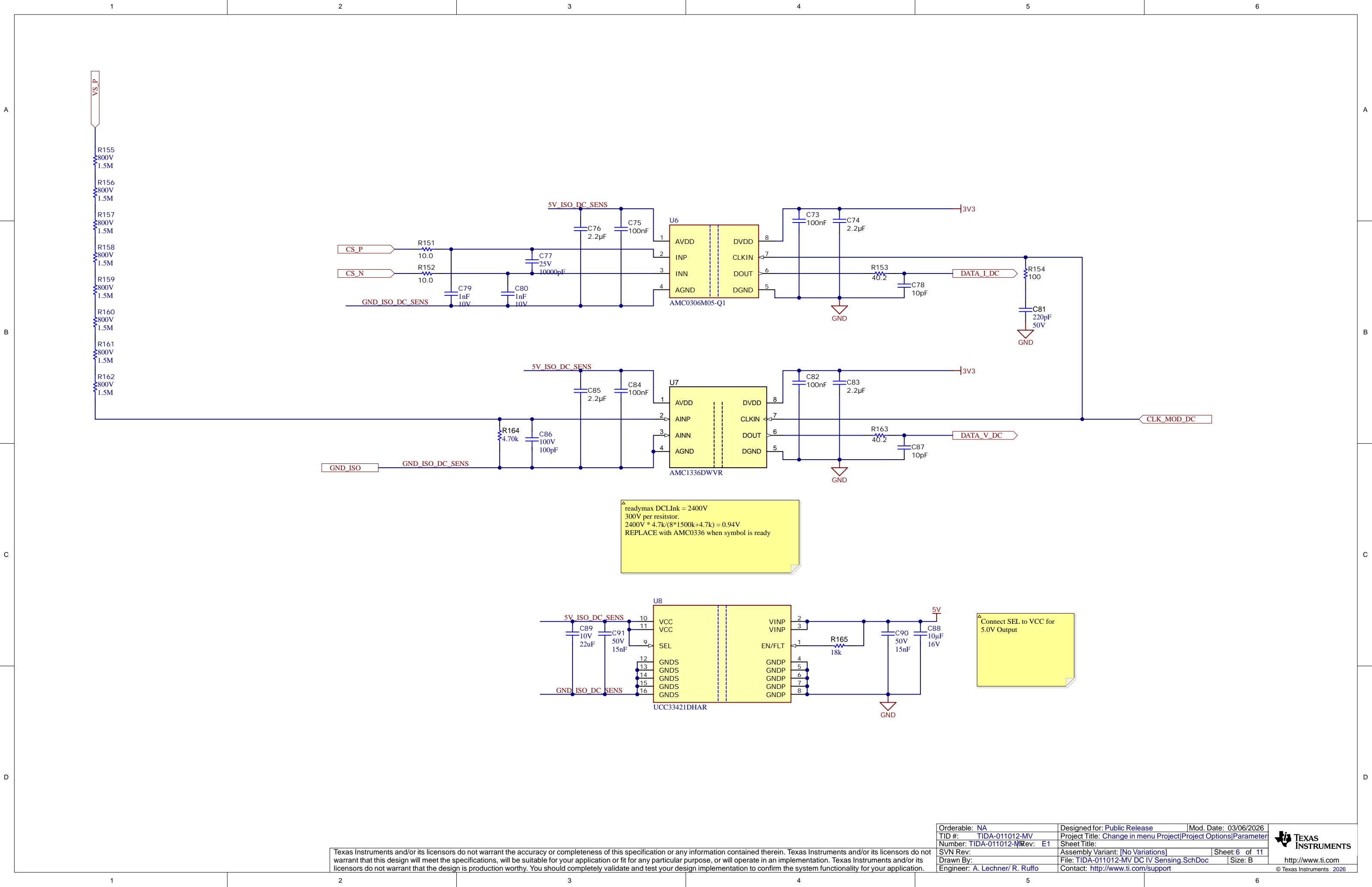


Debug Header



TODO:
RC for SPI?
TESTPOINTS!





A

B

C

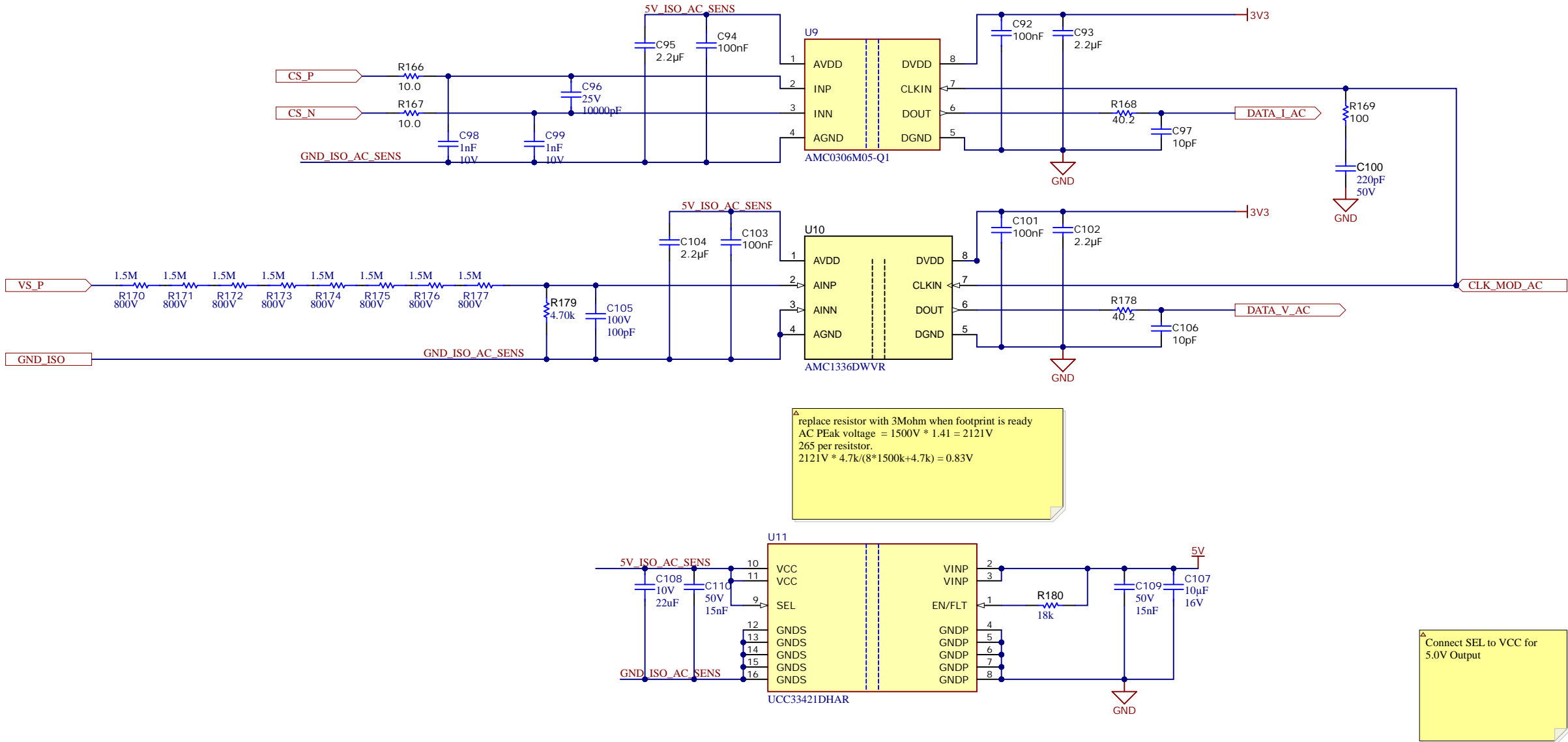
D

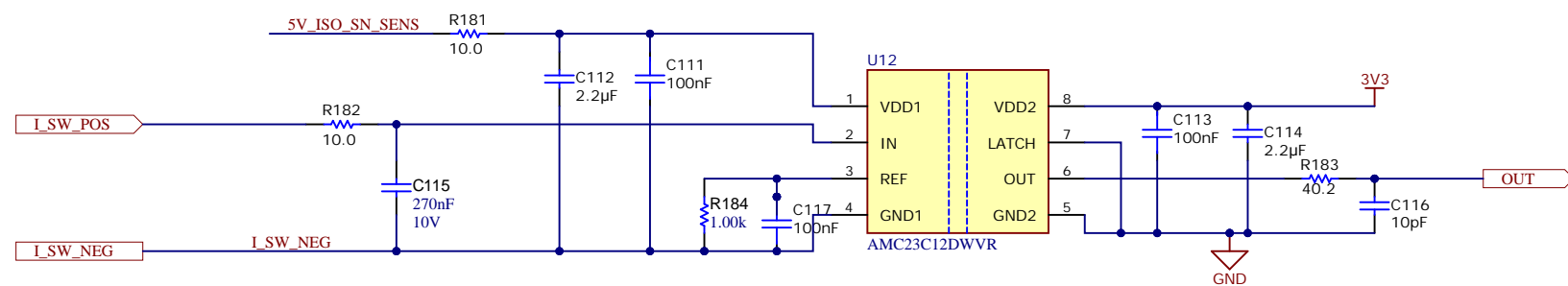
A

B

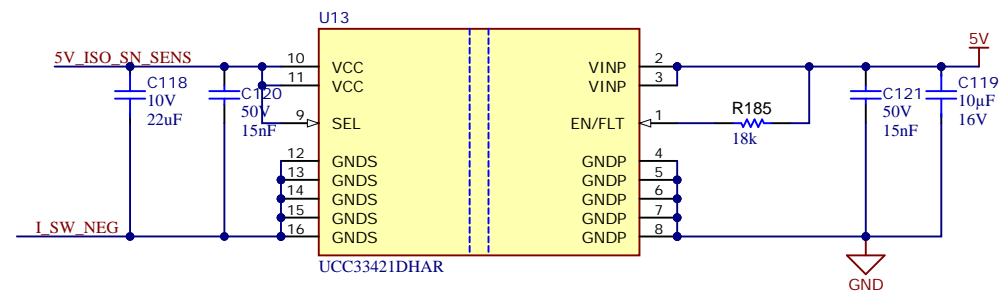
C

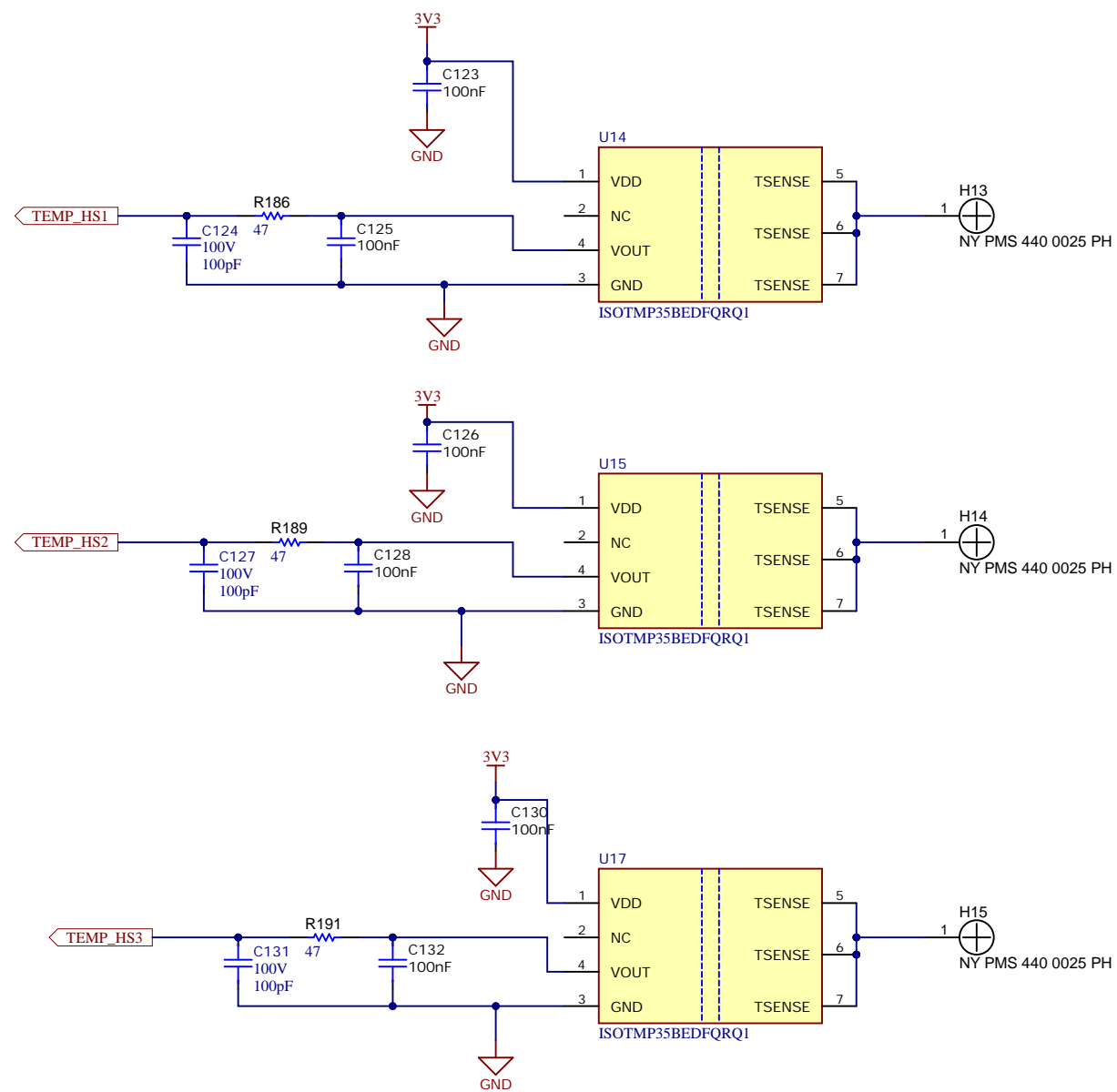
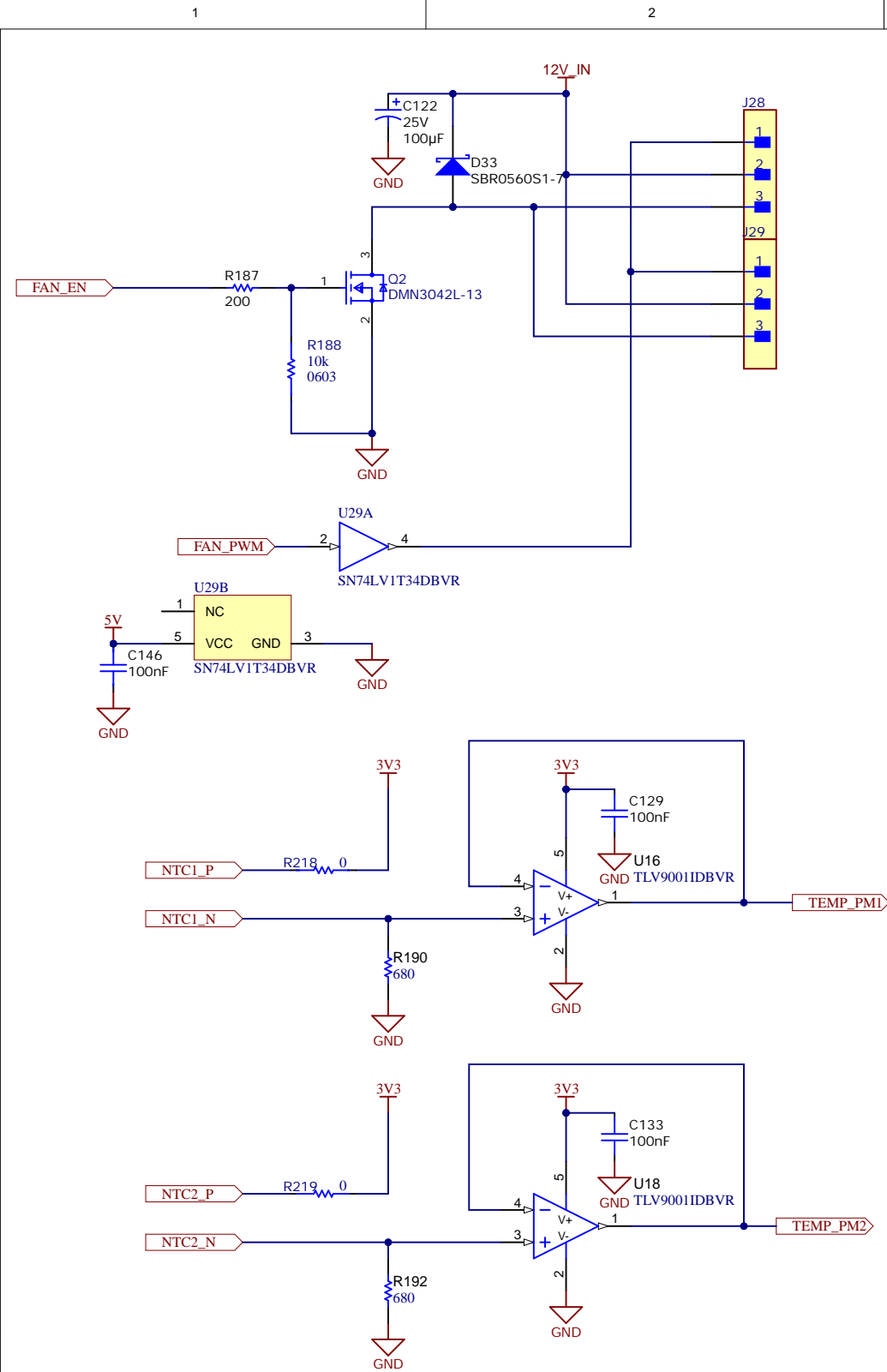
D





OC Threshold: 100A
 Threshold: 100mV
 $R_{th} = (100mV - 4mV) * 100uA = 960 \text{ Ohm} \rightarrow \text{select } 1k$
 Select R and C in current sense input to compensate shunt inductance!
 $L/R = R * C$
 Resistance 1mOhm, Inductance < 3nH.
 $FiltR = 0Ohm \rightarrow FiltC = 300nF$, select 270nF

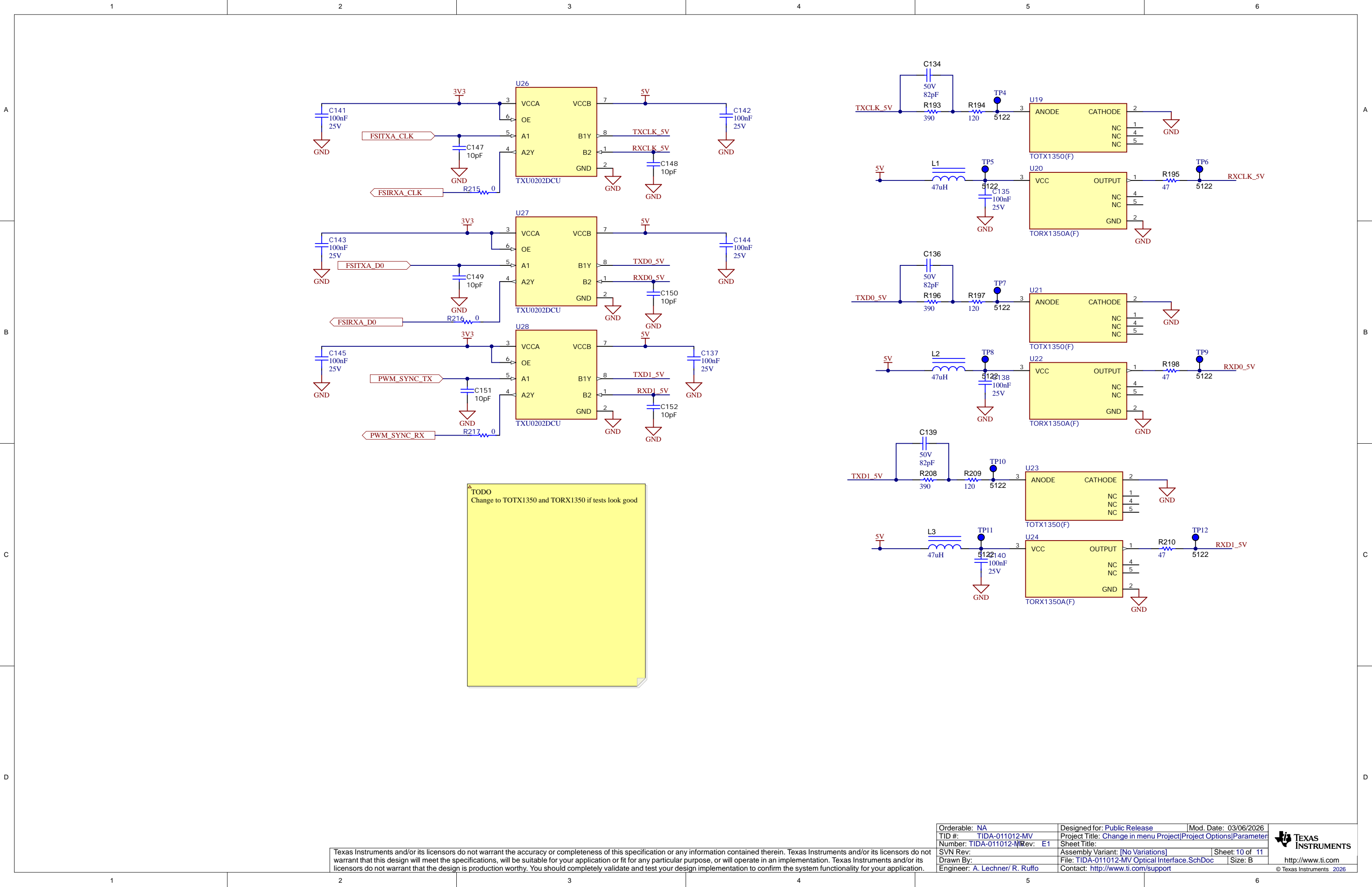




PLACE METALIK STandoff to connect
thermaly to HEatsink

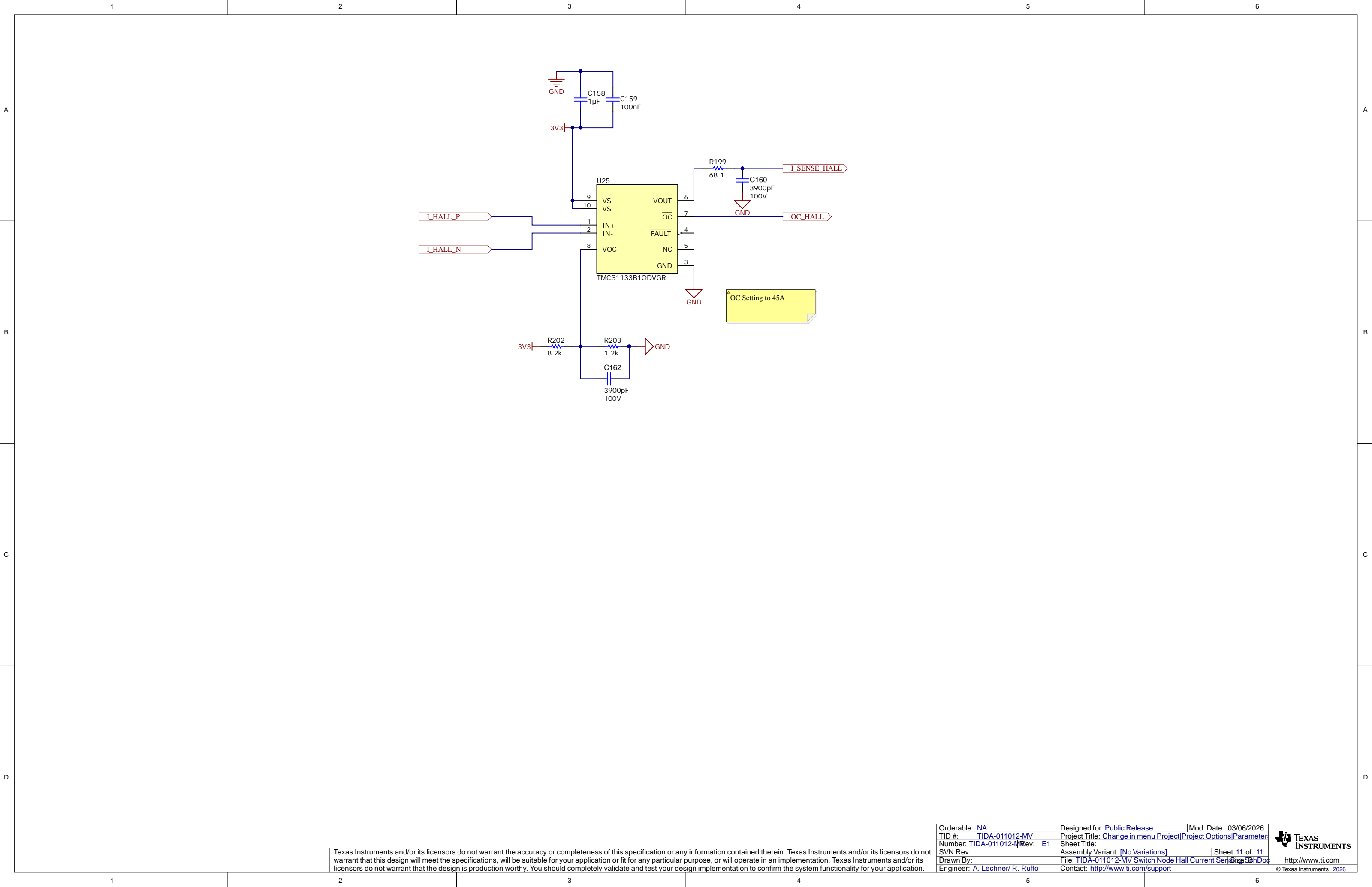
PLACE METALIK STandoff to connect thermaly to HEatsink

PLACE METALIK STandoff to connect thermaly to HEatsink




Texas Instruments and/or its licensors do not warrant the accuracy or completeness of this specification or any information contained therein. Texas Instruments and/or its licensors do not warrant that this design will meet the specifications, will be suitable for your application or fit for any particular purpose, or will operate in an implementation. Texas Instruments and/or its licensors do not warrant that the design is production worthy. You should completely validate and test your design implementation to confirm the system functionality for your application.

Orderable: NA	Designed for: Public Release	Mod. Date: 03/06/2026
TID #: TIDA-011012-MV	Project Title: Change in menu Project	Project Options Parameter
Number: TIDA-011012-M Rev: E1	Sheet Title:	
SVN Rev:	Assembly Variant: [No Variations]	Sheet: 10 of 11
Drawn By:	File: TIDA-011012-MV Optical Interface.SchDoc	Size: B
Engineer: A. Lechner/ R. Ruffo	Contact: http://www.ti.com/support	



Texas Instruments and/or its licensors do not warrant the accuracy or completeness of this specification or any information contained therein. Texas Instruments and/or its licensors do not warrant that this design will meet the specifications, will be suitable for your application or fit for any particular purpose, or will operate in an implementation. Texas Instruments and/or its licensors do not warrant that the design is production worthy. You should completely validate and test your design implementation to confirm the system functionality for your application.

Orderable: NA	Designed for: Public Release	Mod. Date: 03/06/2026	 TEXAS INSTRUMENTS http://www.ti.com © Texas Instruments 2026
TID #: TIDA-011012-MV	Project Title: Change in menu Project	Project Options Parameter	
Number: TIDA-011012-M Rev: E1	Sheet Title:		
SVN Rev:	Assembly Variant: [No Variations]	Sheet: 11 of 11	
Drawn By:	File: TIDA-011012-MV Switch Node Hall Current Sensing SchDoc	Size: 50K	
Engineer: A. Lechner/ R. Ruffo	Contact: http://www.ti.com/support		