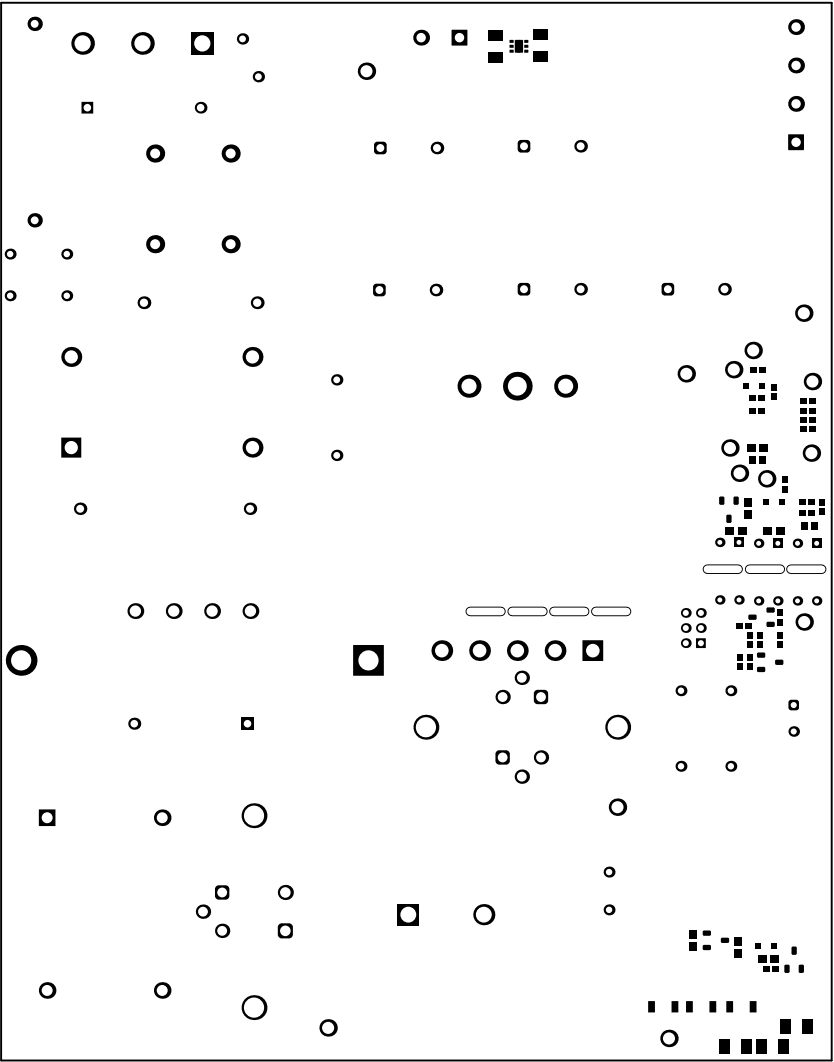
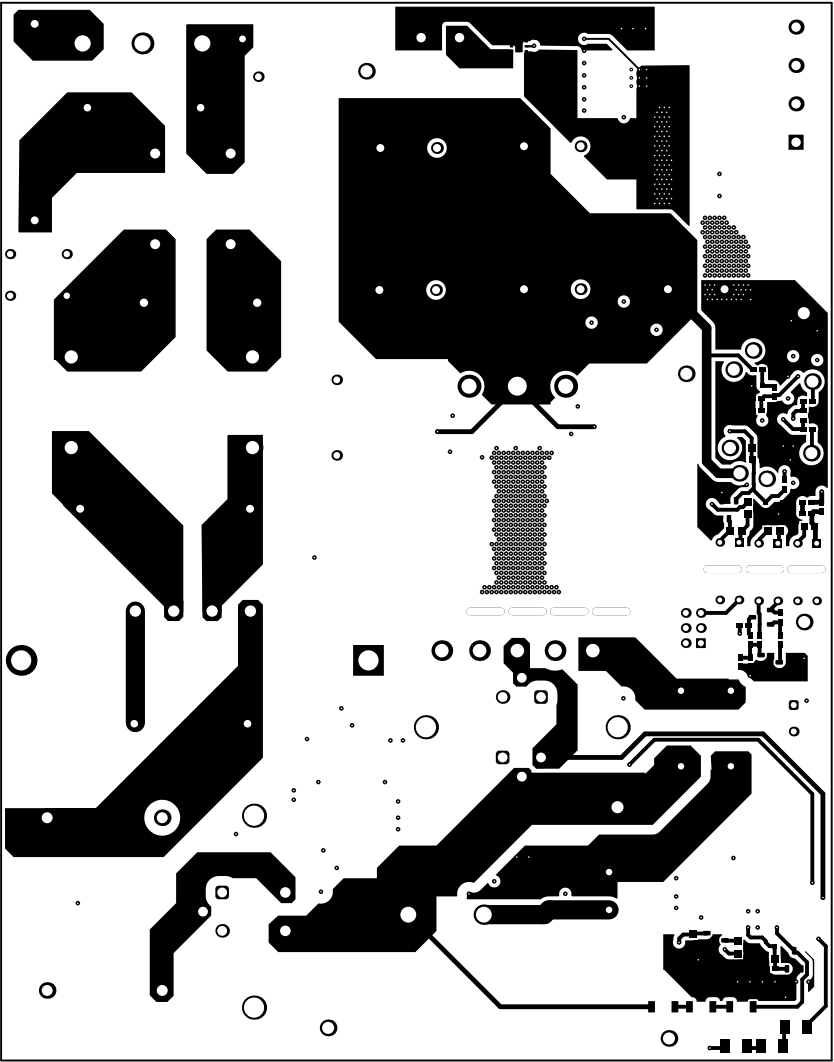


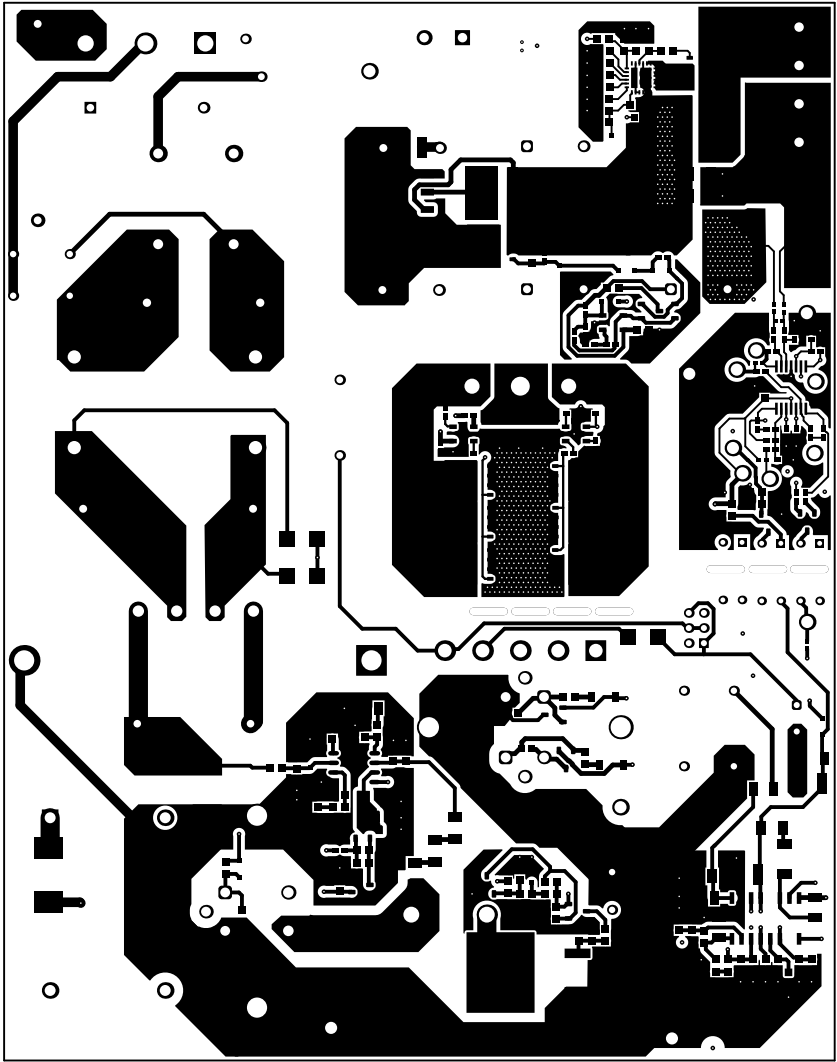
ALL ARTWORK VIEWED FROM TOP SIDE	BOARD #: PMP23454	REV: A	SUN REV: Not in version control
LAYER NAME = Top Overlay	TID #: N/A		
PLOT NAME = Top Overlay	GENERATED : 1/8/2024 6:09:19 PM	TEXAS INSTRUMENTS	



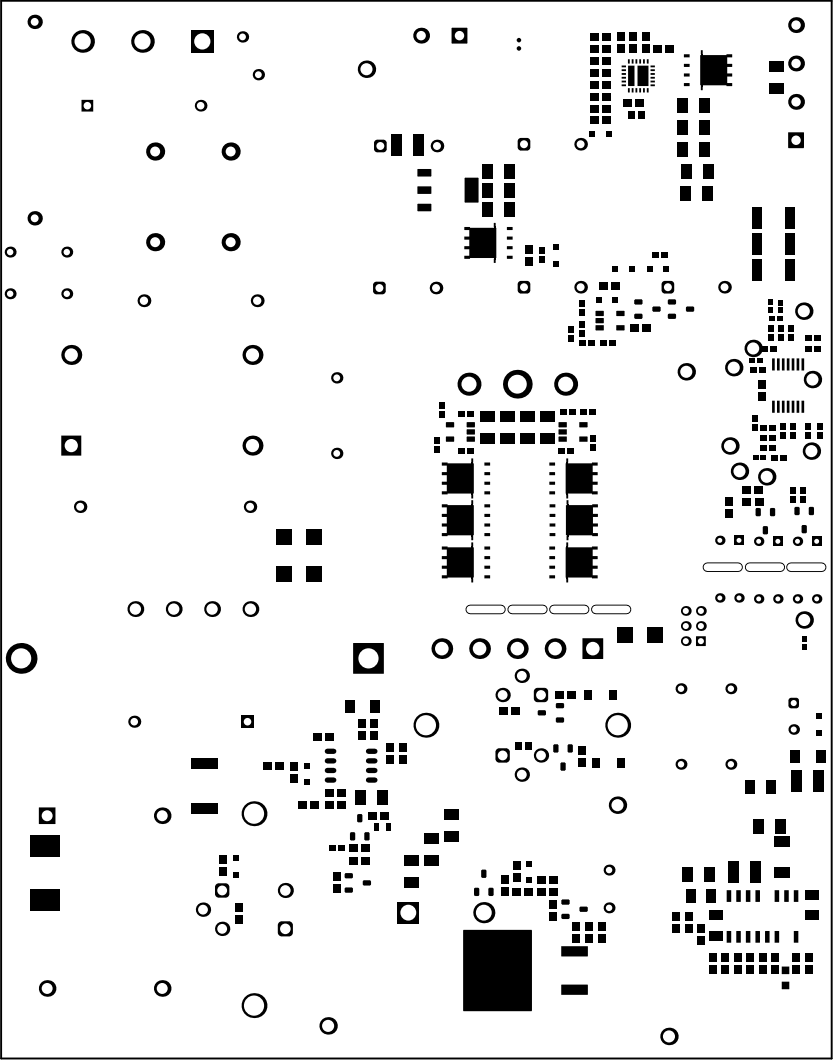
ALL ARTWORK VIEWED FROM TOP SIDE	BOARD #: PMP23454	REV: A	SUN REV: Not in version control
LAYER NAME = Top Solder	TID #: N/A		
PLOT NAME = Top Solder Mask	GENERATED : 1/8/2024 6:09:19 PM	TEXAS INSTRUMENTS	



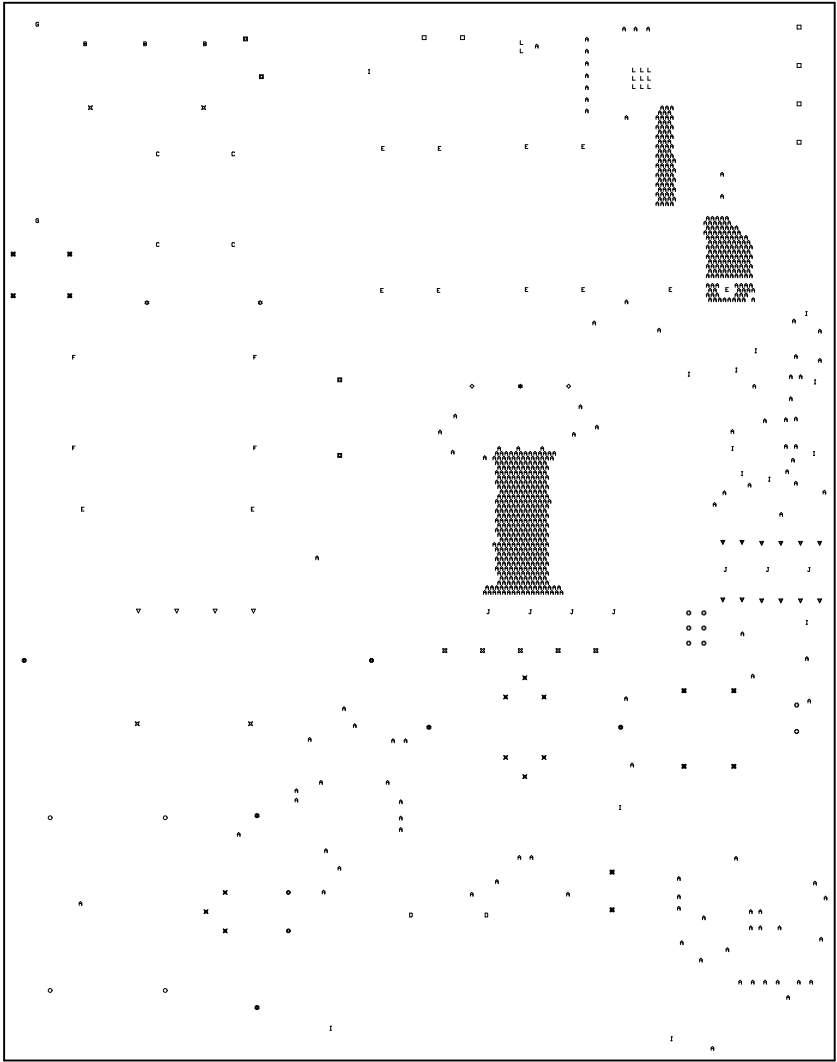
ALL ARTWORK VIEWED FROM TOP SIDE	BOARD #: PMP23454	REV: A	SUN REV: Not in version control
LAYER NAME = Top Layer	TID #: N/A		
PLOT NAME = Top Layer	GENERATED : 1/8/2024 6:09:20 PM	TEXAS INSTRUMENTS	



ALL ARTWORK VIEWED FROM TOP SIDE	BOARD #: PMP23454	REV: A	SUN REV: Not in version control
LAYER NAME = Bottom Layer	TID #: N/A		
PLOT NAME = Bottom Layer	GENERATED : 1/8/2024 6:09:20 PM	TEXAS INSTRUMENTS	



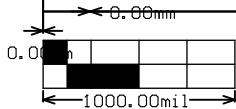
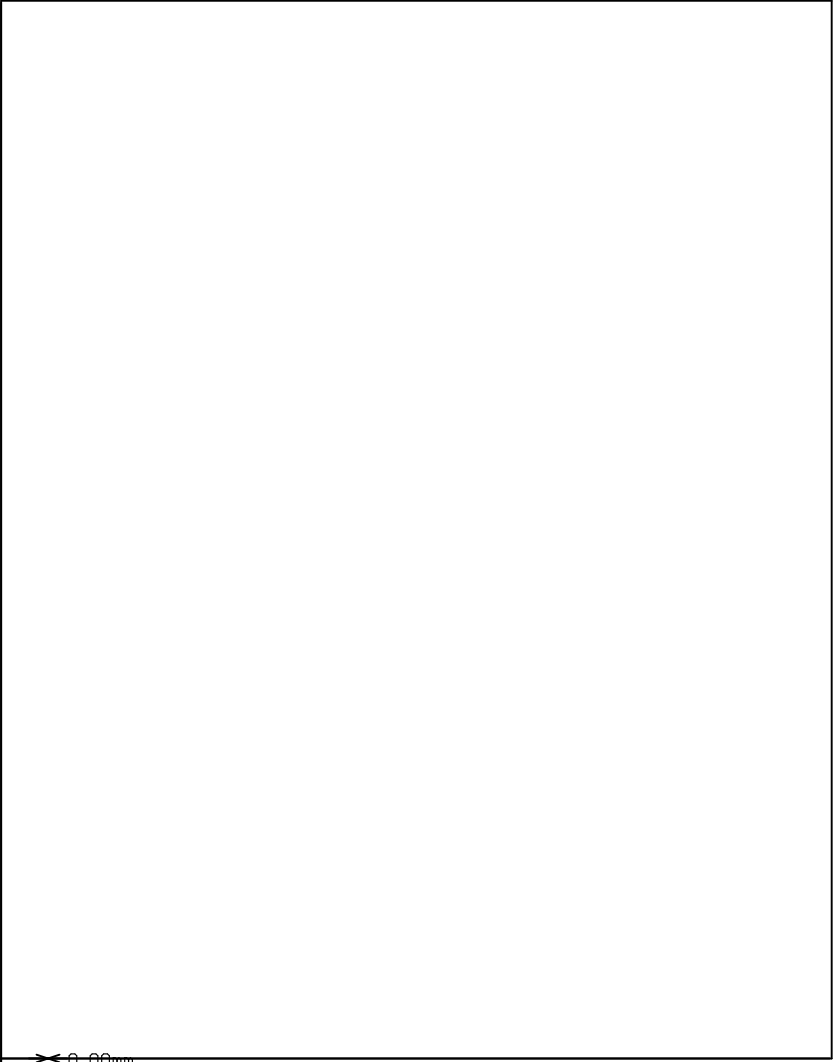
ALL ARTWORK VIEWED FROM TOP SIDE	BOARD #: PMP23454	REV: A	SUN REV: Not in version control
LAYER NAME = Bottom Solder	TID #: N/A		
PLOT NAME = Bottom Solder Mask	GENERATED : 1/8/2024 6:09:20 PM	TEXAS INSTRUMENTS	



Symbol	Quantity	Finished Hole Size	Plated	Hole Type	Drill Layer Pair	Hole Tolerance
L	11	7.87mil (0.200mm)	PTH	Round	Top Layer - Bottom Layer	
A	663	8.00mil (0.203mm)	PTH	Round	Top Layer - Bottom Layer	
▼	12	25.59mil (0.650mm)	PTH	Round	Top Layer - Bottom Layer	
⊗	8	31.50mil (0.800mm)	PTH	Round	Top Layer - Bottom Layer	
⊗	10	33.47mil (0.850mm)	PTH	Round	Top Layer - Bottom Layer	
⊗	4	35.43mil (0.900mm)	PTH	Round	Top Layer - Bottom Layer	
⊗	4	39.37mil (1.000mm)	PTH	Round	Top Layer - Bottom Layer	
G	2	41.00mil (1.041mm)	PTH	Round	Top Layer - Bottom Layer	
E	12	41.34mil (1.050mm)	PTH	Round	Top Layer - Bottom Layer	
☆	2	43.31mil (1.100mm)	PTH	Round	Top Layer - Bottom Layer	
□	6	49.21mil (1.250mm)	PTH	Round	Top Layer - Bottom Layer	
⊗	9	51.18mil (1.300mm)	PTH	Round	Top Layer - Bottom Layer	
C	4	52.00mil (1.321mm)	PTH	Round	Top Layer - Bottom Layer	
⊗	2	55.12mil (1.400mm)	PTH	Round	Top Layer - Bottom Layer	
⊗	4	57.09mil (1.450mm)	PTH	Round	Top Layer - Bottom Layer	
▼	4	59.06mil (1.500mm)	PTH	Round	Top Layer - Bottom Layer	
I	14	63.00mil (1.600mm)	PTH	Round	Top Layer - Bottom Layer	
F	4	68.90mil (1.750mm)	PTH	Round	Top Layer - Bottom Layer	
⊗	5	70.87mil (1.800mm)	PTH	Round	Top Layer - Bottom Layer	
◇	2	78.74mil (2.000mm)	PTH	Round	Top Layer - Bottom Layer	
D	2	82.68mil (2.100mm)	PTH	Round	Top Layer - Bottom Layer	
B	3	84.65mil (2.150mm)	PTH	Round	Top Layer - Bottom Layer	
☆	1	98.43mil (2.500mm)	PTH	Round	Top Layer - Bottom Layer	
⊗	6	105.12mil (2.670mm)	PTH	Round	Top Layer - Bottom Layer	
J	7	40.00mil (1.016mm)	NPTH	Slot	Top Layer - Bottom Layer	
	801 Total					

Slot definitions : Routed Path Length = Calculated from tool start centre position to tool end centre position.
Hole Length = Routed Path Length + Tool Size = Slot length as defined in the PCB layout

ALL ARTWORK VIEWED FROM TOP SIDE	BOARD #: PMP23454	REV: A	SUN REV: Not in version control
LAYER NAME = Drill Drawing	TID #: N/A		
PLOT NAME = Drill Drawing	GENERATED : 1/8/2024 6:09:21 PM		TEXAS INSTRUMENTS



ALL ARTWORK VIEWED FROM TOP SIDE	BOARD #: PMP23454	REV: A	SUN REV: Not in version control
LAYER NAME = M2 Board Dimensions	TID #: N/A		
PLOT NAME = Board Dimensions	GENERATED : 1/8/2024 6:09:22 PM	TEXAS INSTRUMENTS	