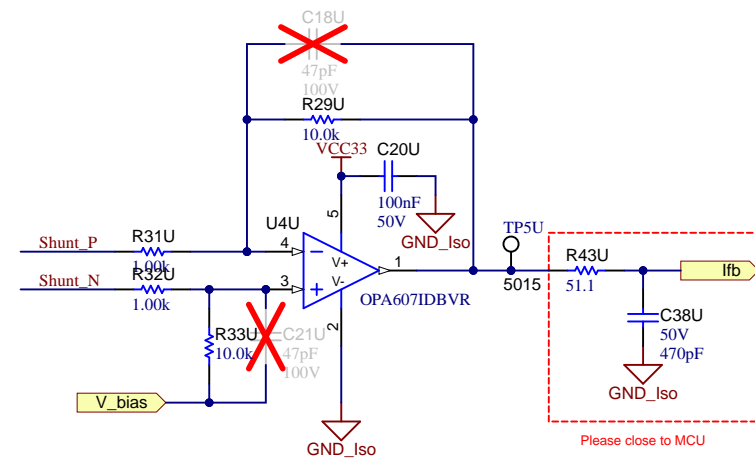
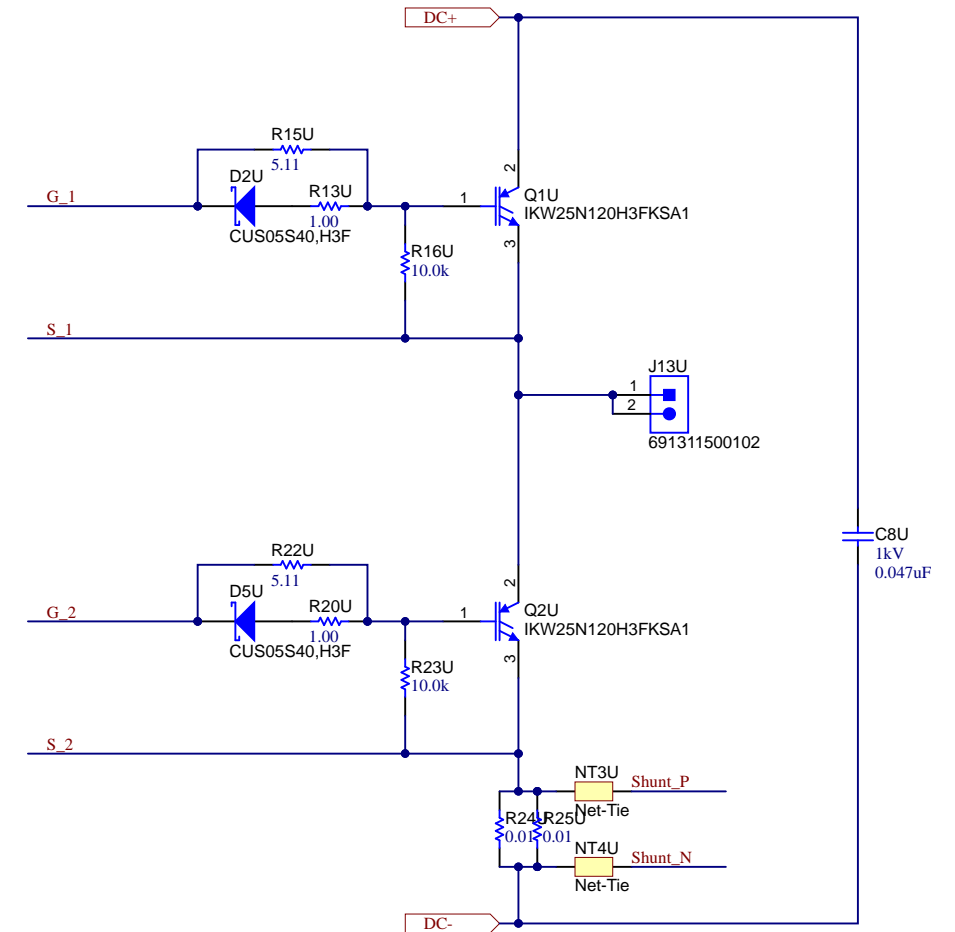
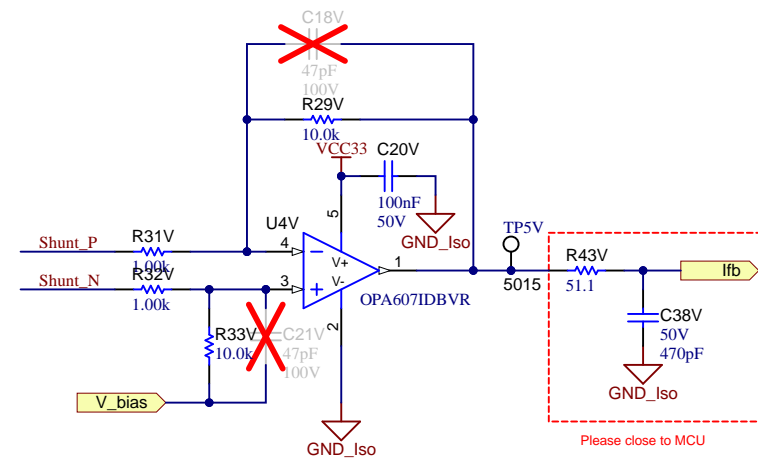
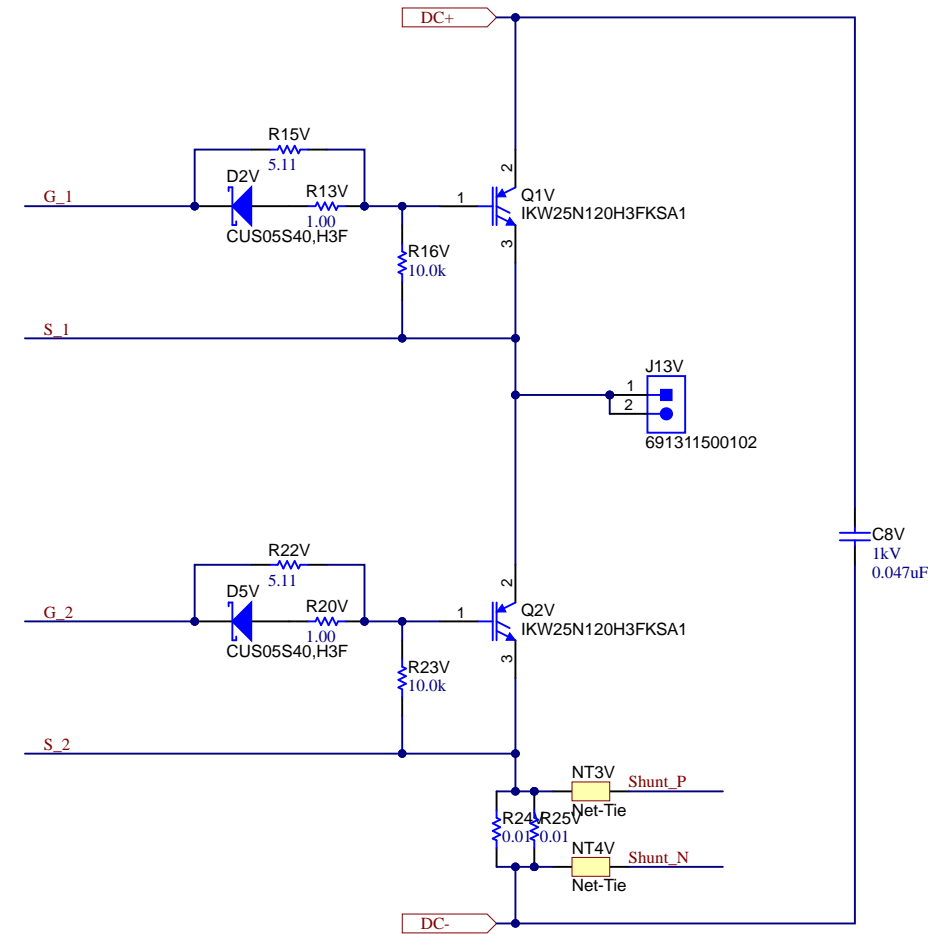
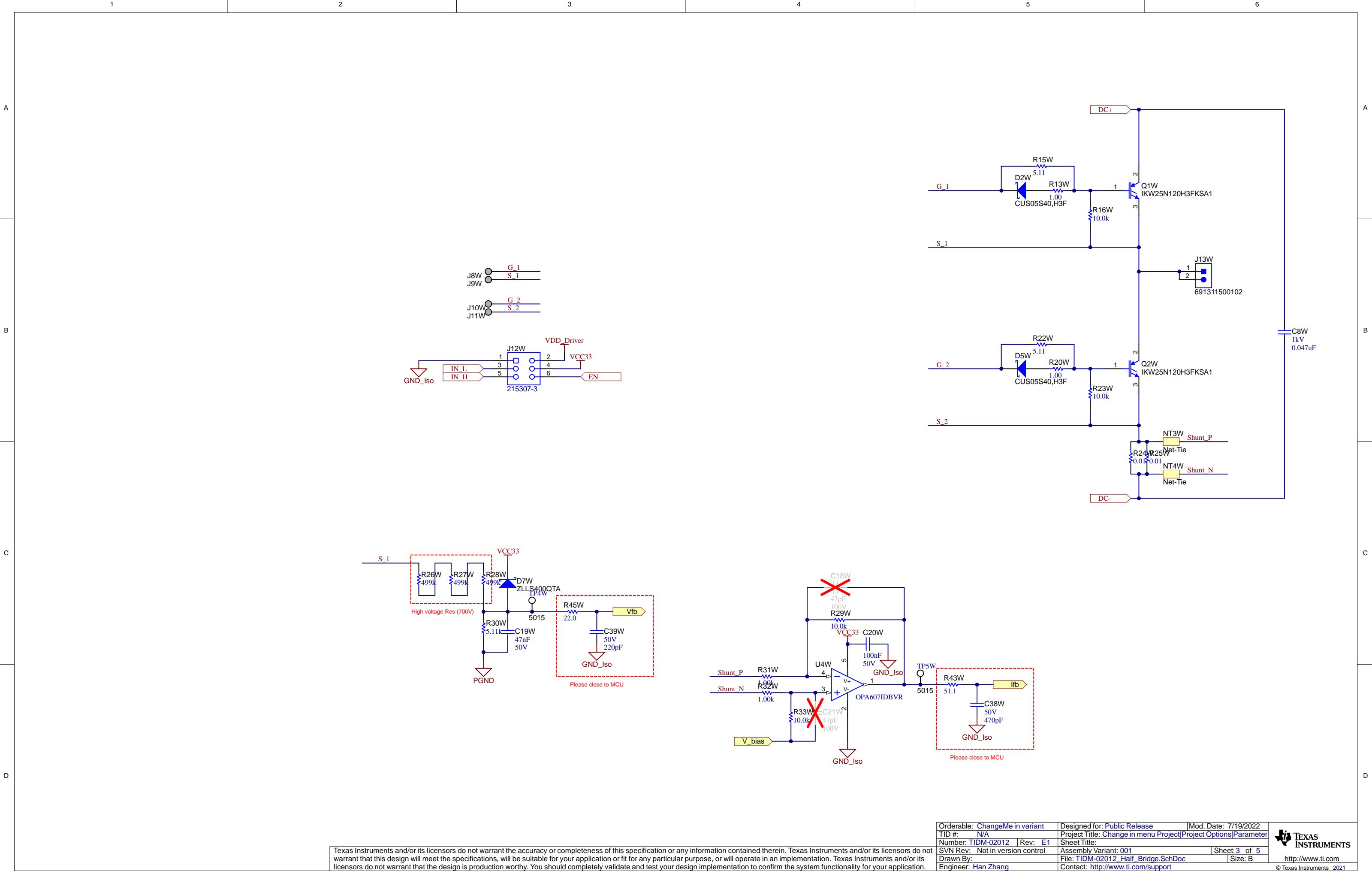


Texas Instruments and/or its licensors do not warrant the accuracy or completeness of this specification or any information contained therein. Texas Instruments and/or its licensors do not warrant that this design will meet the specifications, will be suitable for your application or fit for any particular purpose, or will operate in an implementation. Texas Instruments and/or its licensors do not warrant that the design is production worthy. You should completely validate and test your design implementation to confirm the system functionality for your application.

Orderable: ChangeMe in variant	Designed for: Public Release	Mod. Date: 11/21/2022
TID #: N/A	Project Title: Change in menu Project	Parameter
Number: TIDM-02012	Rev: E1	Sheet Title:
SVN Rev: Not in version control	Assembly Variant: 001	Sheet: 1 of 5
Drawn By:	File: TIDM-02012_CoverSheet.SchDoc	Size: B
Engineer: Han Zhang	Contact: http://www.ti.com/support	

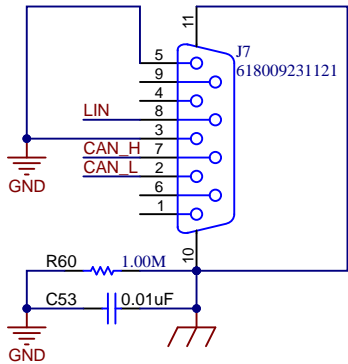
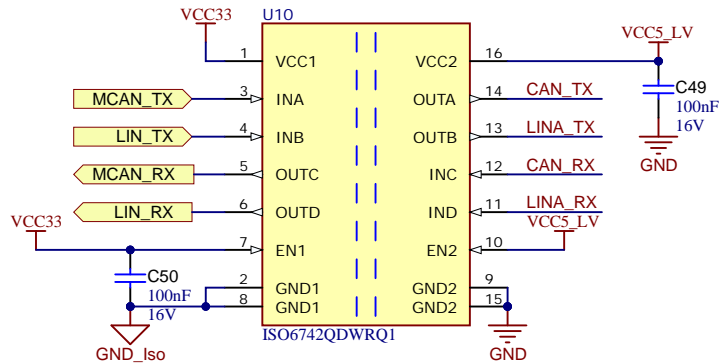




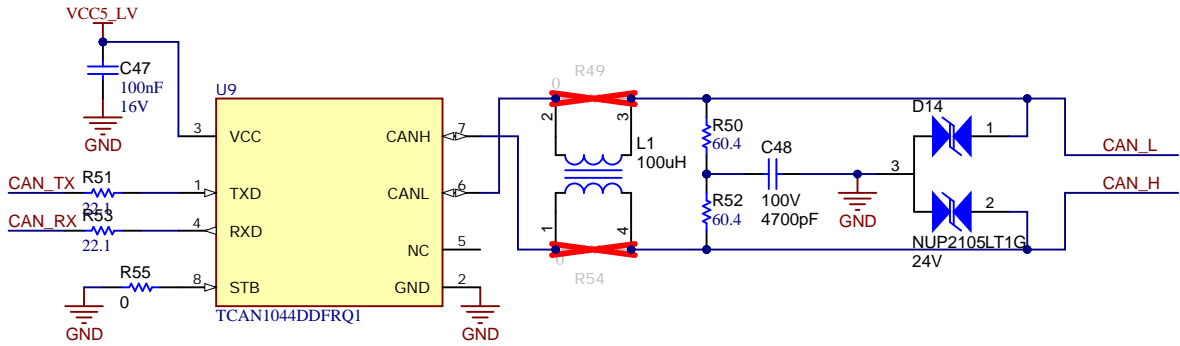


Texas Instruments and/or its licensors do not warrant the accuracy or completeness of this specification or any information contained therein. Texas Instruments and/or its licensors do not warrant that this design will meet the specifications, will be suitable for your application or fit for any particular purpose, or will operate in an implementation. Texas Instruments and/or its licensors do not warrant that the design is production worthy. You should completely validate and test your design implementation to confirm the system functionality for your application.

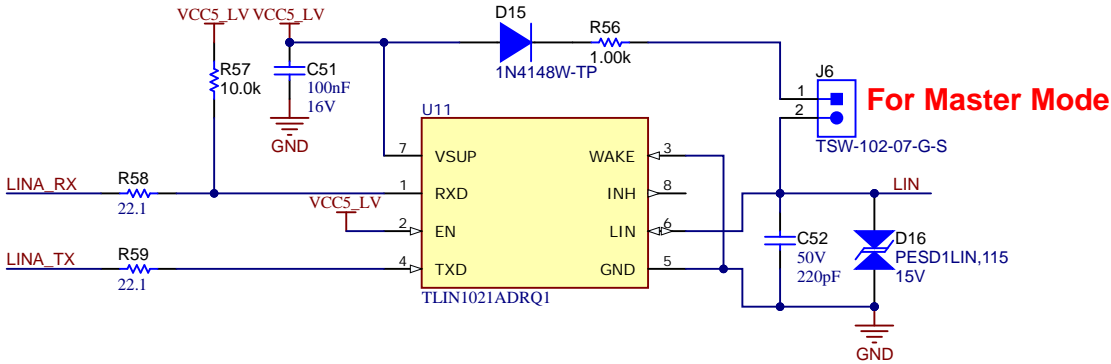
Orderable: ChangeMe in variant	Designed for: Public Release	Mod. Date: 7/19/2022
TID #: N/A	Project Title: Change in menu Project	Project Options: Parameter
Number: TIDM-02012	Rev: E1	Sheet Title:
SVN Rev: Not in version control	Assembly Variant: 001	Sheet: 3 of 5
Drawn By:	File: TIDM-02012_Half_Bridge.SchDoc	Size: B
Engineer: Han Zhang	Contact: http://www.ti.com/support	



Non-Isolated CAN



LIN



For Master Mode