

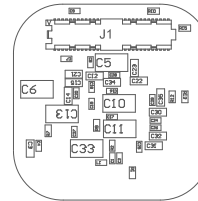
COMPONENTS MARKED 'DNP' SHOULD NOT BE POPULATED.
ASSEMBLY VARIANT: 001

| | | | |
|----------------------------------|----------------------------------|---------|---------------------------------|
| PCB VIEWED FROM TOP SIDE | BOARD #: TIDA-050060 | REV: E1 | SUN REV: Not in version control |
| | TID #: 050060 | | |
| PLOT NAME = Top Assembly Drawing | GENERATED : 7/28/2022 9:06:39 AM | | TEXAS INSTRUMENTS |

ZZ1 ■ These assemblies are ESD sensitive, ESD precautions shall be observed.

222 ■ These assemblies must be clean and free from flux and all contaminants. Use of no clean flux is not acceptable.

223 ■ These assemblies must comply with workmanship standards IPC-A-610 Class 2, unless otherwise specified.



COMPONENTS MARKED 'DNP' SHOULD NOT BE POPULATED.

ASSEMBLY VARIANT: 001

| | | | |
|-------------------------------------|----------------------------------|---------|---------------------------------|
| PCB VIEWED FROM BOTTOM SIDE | BOARD #: TIDA-050060 | REV: E1 | SUN REV: Not in version control |
| | TID #: 050060 | | |
| PLOT NAME = Bottom Assembly Drawing | GENERATED : 7/28/2022 9:06:39 AM | | TEXAS INSTRUMENTS |