

ADC10D1000 Evaluation Board

Bench Evaluation Board

SPECIAL NOTES

These schematics reflect the current state of product development. This design had NOT yet been fully tested at the time these schematics were generated.


Since this product is in development, the user of this document is strongly advised to check for the latest revision.

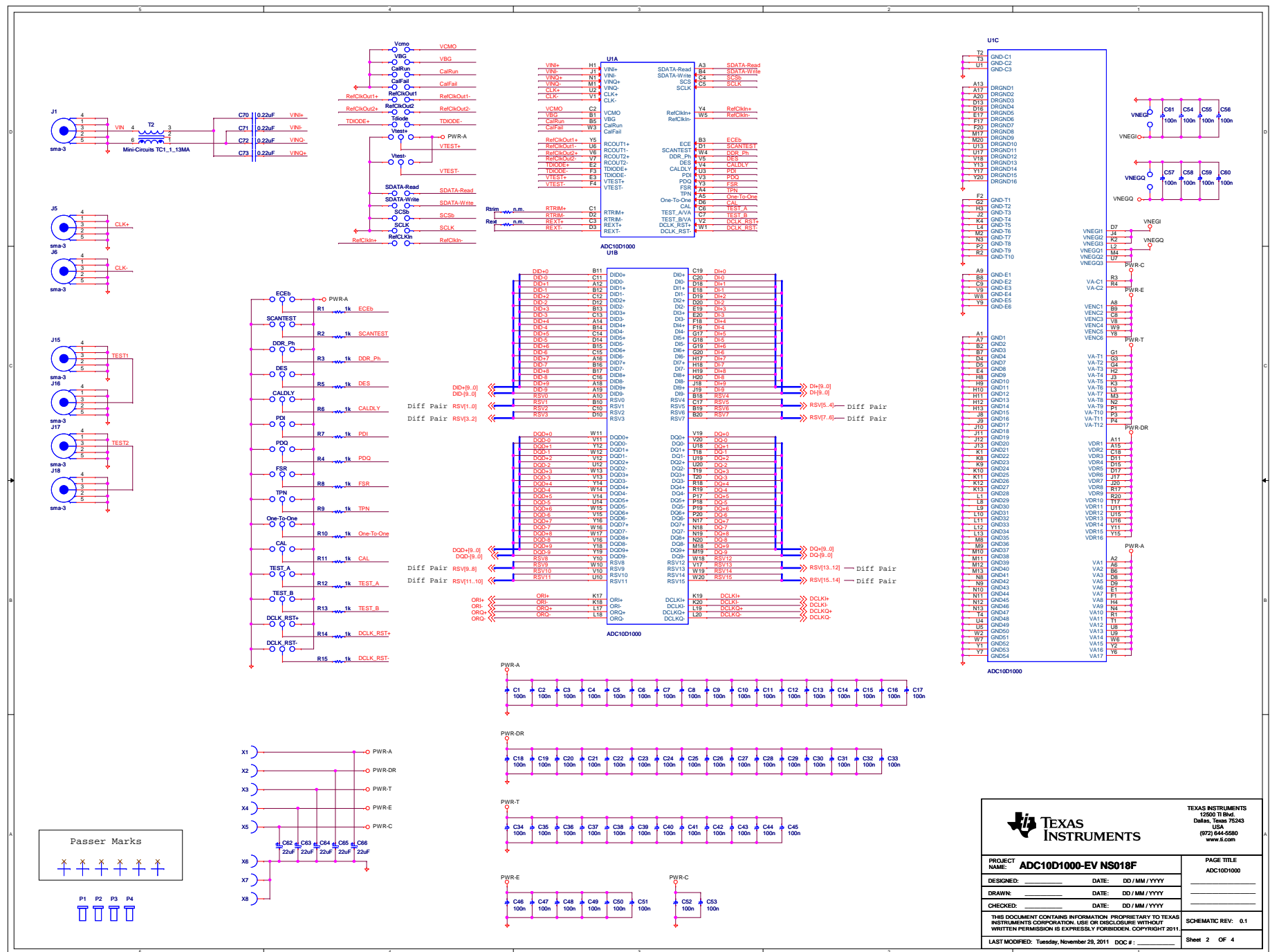
National Semiconductor reserves the right to make changes to this product.

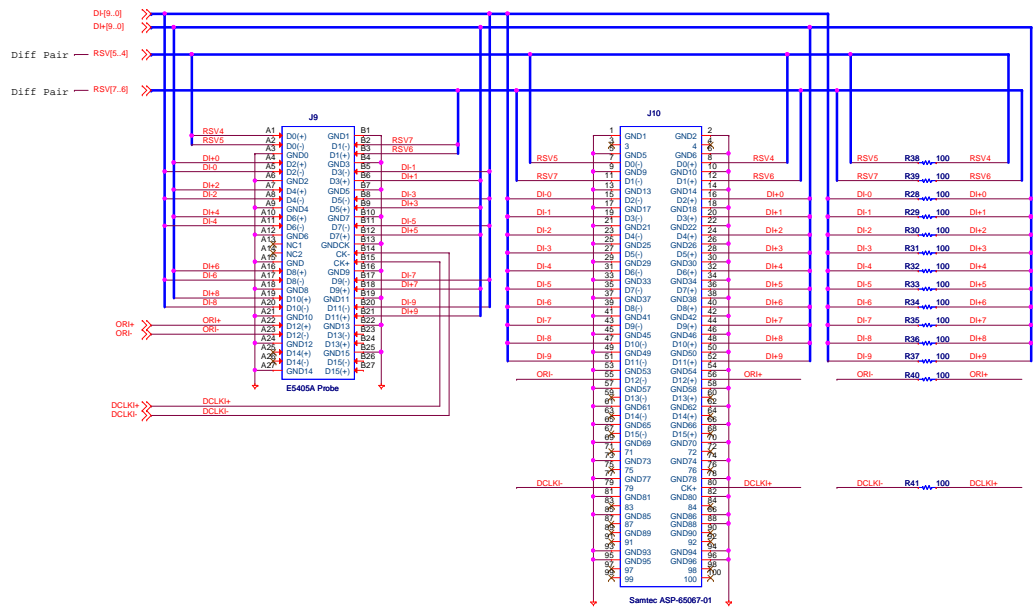
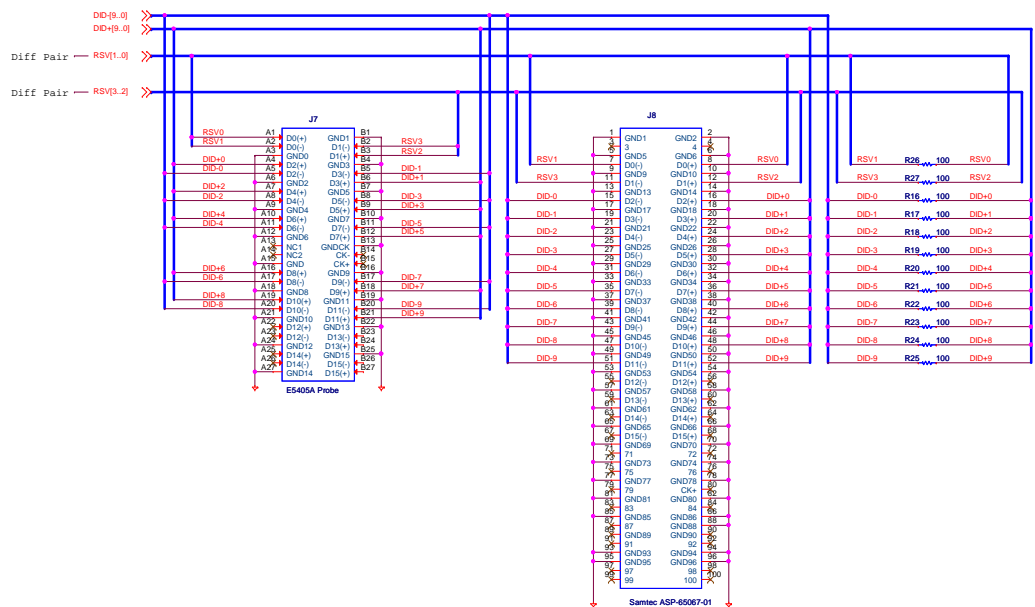
ALL parts labeled "NA" are NOT ASSEMBLED.

Print Instructions:

- To create a readable printout, we recommend to use A3 or 11x17" paper size.
- When printing from this PDF file, make sure to check the "Shrink to fit" box.

 TEXAS INSTRUMENTS		TEXAS INSTRUMENTS 12500 TI Blvd. Dallas, Texas 75243 USA (972) 644-6580 www.ti.com	
PROJECT NAME: ADC10D1000-EV NS018F		PAGE TITLE: Title Page	
DESIGNED:	DATE: DD / MM / YYYY		
DRAWN:	DATE: DD / MM / YYYY		
CHECKED:	DATE: DD / MM / YYYY		
THIS DOCUMENT CONTAINS INFORMATION PROPRIETARY TO TEXAS INSTRUMENTS CORPORATION. USE OR DISCLOSURE WITHOUT WRITTEN PERMISSION IS EXPRESSLY FORBIDDEN. COPYRIGHT 2011.		SCHEMATIC REV: 0.1	
LAST MODIFIED: Tuesday, November 29, 2011 DOC # : _____		Sheet 1 OF 4	

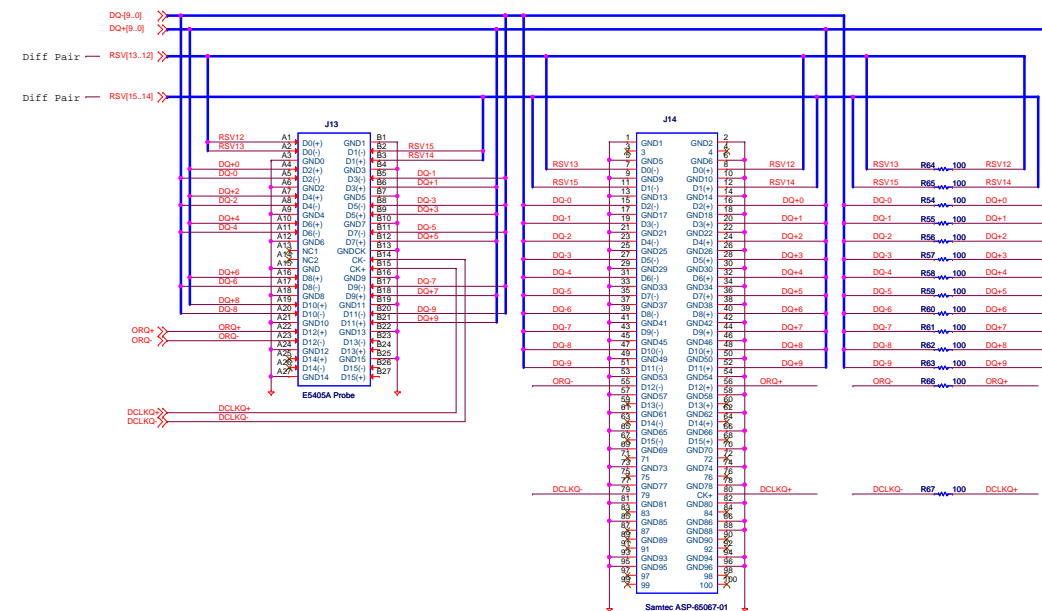




**TEXAS
INSTRUMENTS**

12500 TI Blvd.
Dallas, Texas 75243
USA
(972) 644-6580
www.ti.com

PROJECT NAME: ADC10D1000-EV NS018F		PAGE TITLE: Expansion Ports	
DESIGNED:	DATE: DD / MM / YYYY		
DRAWN:	DATE: DD / MM / YYYY		
CHECKED:	DATE: DD / MM / YYYY		
THIS DOCUMENT CONTAINS INFORMATION PROPRIETARY TO TEXAS INSTRUMENTS CORPORATION. USE OR DISCLOSURE WITHOUT WRITTEN PERMISSION IS EXPRESSLY FORBIDDEN. COPYRIGHT 2011.		SCHEMATIC REV: 0.1	
LAST MODIFIED: Tuesday, November 29, 2011 DOC #:		Sheet 3 OF 4	



PAGE TITLE
Expansion Ports

SCHEMATIC REV: 0.1

Sheet 4 OF 4