

# ADC10D1000 Evaluation Board

## Bench Evaluation Board

### SPECIAL NOTES

These schematics reflect the current state of product development. This design had NOT yet been fully tested at the time these schematics were generated.


Since this product is in development, the user of this document is strongly advised to check for the latest revision.

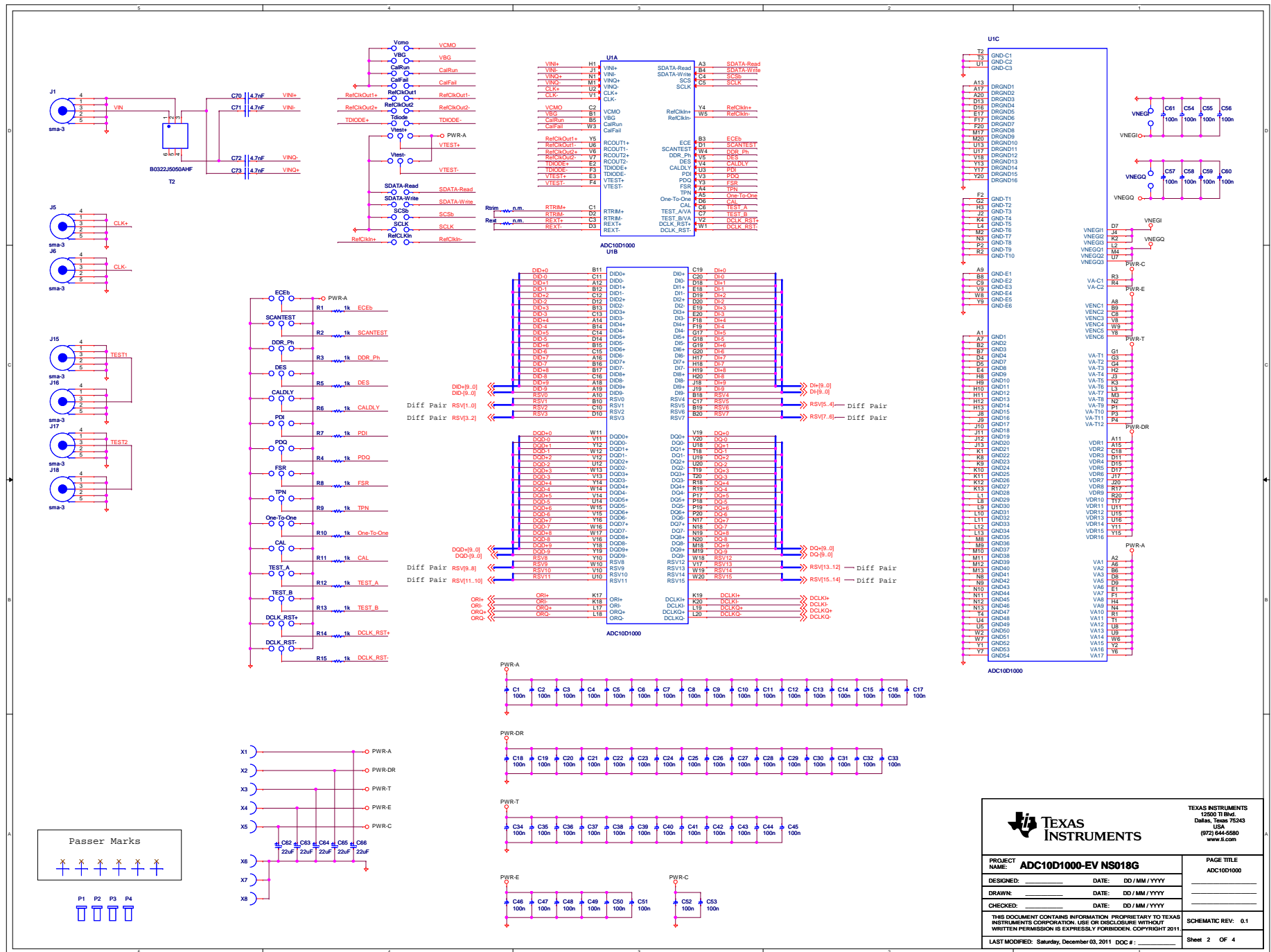
National Semiconductor reserves the right to make changes to this product.

ALL parts labeled "NA" are NOT ASSEMBLED.

**Print Instructions:**

- To create a readable printout, we recommend to use A3 or 11x17" paper size.
- When printing from this PDF file, make sure to check the "Shrink to fit" box.

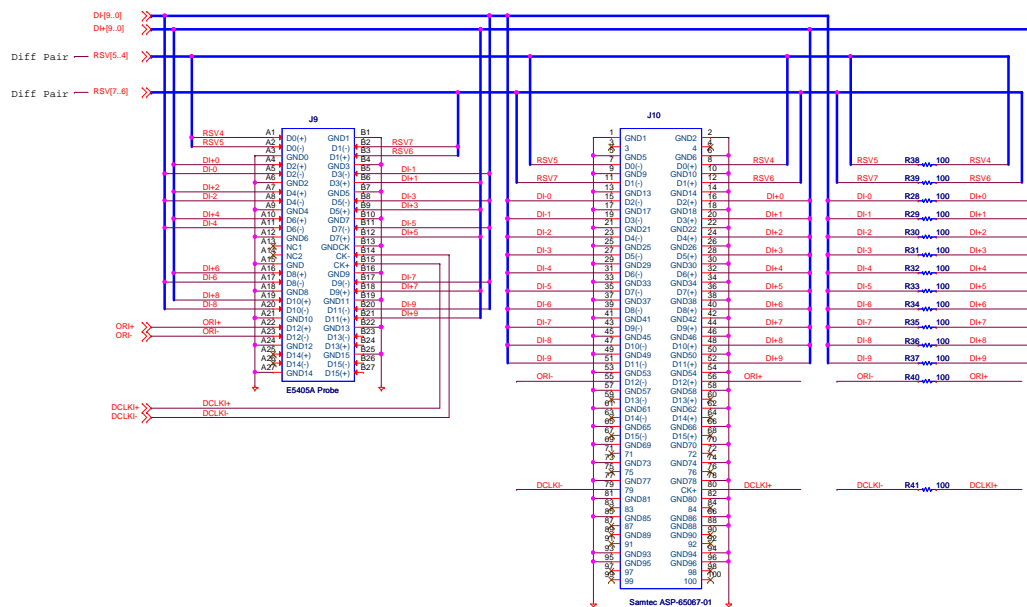
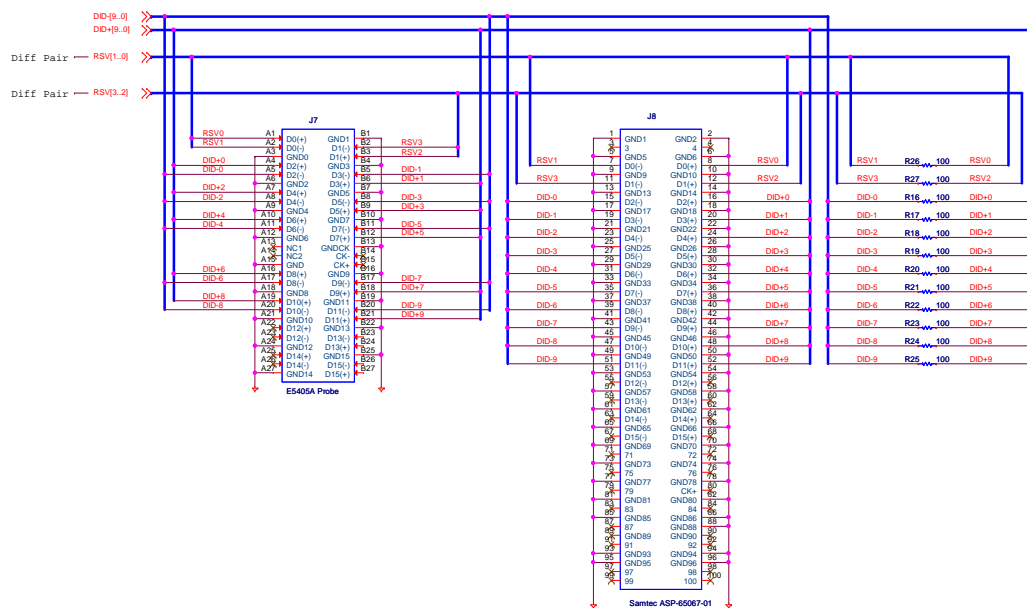
 <b>TEXAS INSTRUMENTS</b>		TEXAS INSTRUMENTS 12500 TI Blvd. Dallas, Texas 75243 USA (972) 644-6580 www.ti.com	
<b>PROJECT NAME:</b> ADC10D1000-EV NS018G		<b>PAGE TITLE:</b> Title Page	
<b>DESIGNED:</b>	<b>DATE:</b> DD / MM / YYYY		
<b>DRAWN:</b>	<b>DATE:</b> DD / MM / YYYY		
<b>CHECKED:</b>	<b>DATE:</b> DD / MM / YYYY		
THIS DOCUMENT CONTAINS INFORMATION PROPRIETARY TO TEXAS INSTRUMENTS CORPORATION. USE OR DISCLOSURE WITHOUT WRITTEN PERMISSION IS EXPRESSLY FORBIDDEN. COPYRIGHT 2011.		SCHEMATIC REV: 0.1	
LAST MODIFIED: Tuesday, November 29, 2011 DOC # : _____		Sheet 1 OF 4	



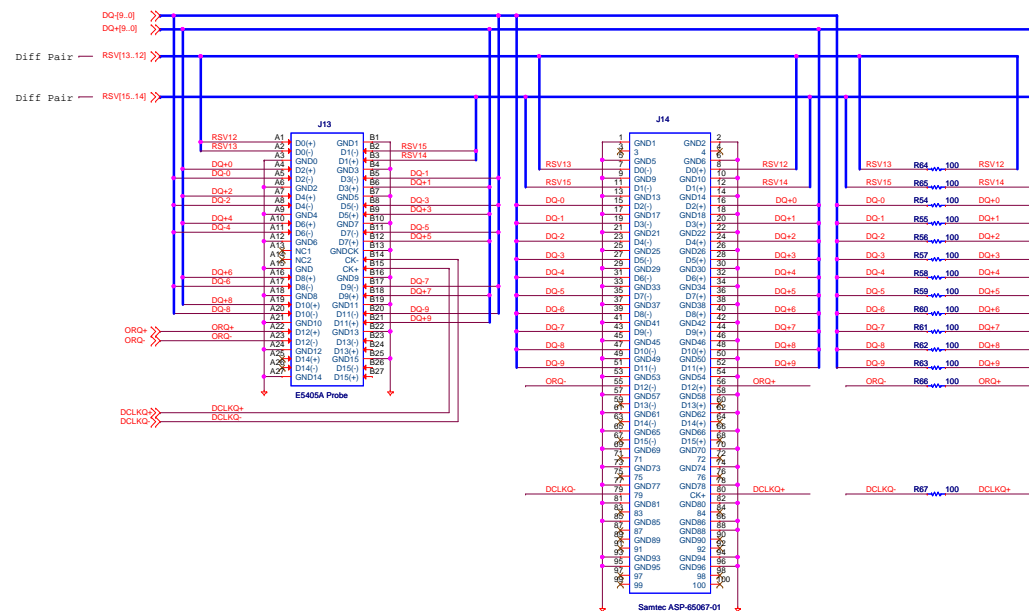
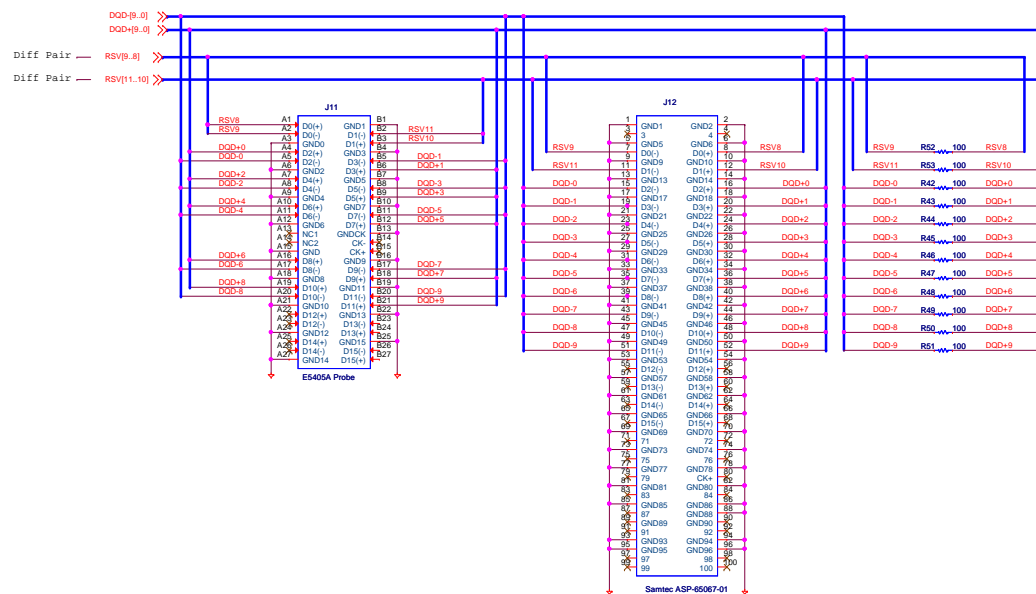
**TEXAS  
INSTRUMENTS**

12000 TI Blvd.  
Dallas, Texas 75243  
USA  
(972) 644-6880  
www.ti.com

<b>PROJECT NAME:</b> ADC10D1000-EV NS018G		<b>PAGE TITLE:</b> ADC10D1000
<b>DESIGNED:</b>	<b>DATE:</b> DD / MM / YYYY	<b>SCHEMATIC REV:</b> 0.1
<b>DRAWN:</b>	<b>DATE:</b> DD / MM / YYYY	
<b>CHECKED:</b>	<b>DATE:</b> DD / MM / YYYY	
THIS DOCUMENT CONTAINS INFORMATION PROPRIETARY TO TEXAS INSTRUMENTS CORPORATION. USE OR DISCLOSURE WITHOUT WRITTEN PERMISSION IS EXPRESSLY FORBIDDEN. COPYRIGHT 2011.		<b>Sheet 2 Of 4</b>



<b>TEXAS INSTRUMENTS</b> 15000 TI Blvd. Dallas, Texas 75243 USA (972) 644-6680 www.ti.com		<b>TEXAS INSTRUMENTS</b> 15000 TI Blvd. Dallas, Texas 75243 USA (972) 644-6680 www.ti.com	
		PROJECT NAME: <b>ADC10D1000-EV NS018G</b>	
DESIGNED:	DATE: DD / MM / YYYY	PAGE TITLE	
DRAWN:	DATE: DD / MM / YYYY	Expansion Ports	
CHECKED:	DATE: DD / MM / YYYY		
THIS DOCUMENT CONTAINS INFORMATION PROPRIETARY TO TEXAS INSTRUMENTS CORPORATION. USE OR DISCLOSURE WITHOUT WRITTEN PERMISSION IS EXPRESSLY FORBIDDEN. COPYRIGHT 2011.		SCHEMATIC REV: 0.1	
LAST MODIFIED: Tuesday, November 29, 2011 DOC # :		Sheet 3 OF 4	



<b>TEXAS INSTRUMENTS</b> 12000 TI Blvd. Dallas, Texas 75243 USA (972) 644-6680 www.ti.com		<b>TEXAS INSTRUMENTS</b> 12000 TI Blvd. Dallas, Texas 75243 USA (972) 644-6680 www.ti.com	
		PROJECT NAME: <b>ADC10D1000-EV NS018G</b>	
DESIGNED:	DATE: DD / MM / YYYY	PAGE TITLE Expansion Ports	
DRAWN:	DATE: DD / MM / YYYY		
CHECKED:	DATE: DD / MM / YYYY		
THIS DOCUMENT CONTAINS INFORMATION PROPRIETARY TO TEXAS INSTRUMENTS CORPORATION. USE OR DISCLOSURE WITHOUT WRITTEN PERMISSION IS EXPRESSLY FORBIDDEN. COPYRIGHT 2011.		SCHEMATIC REV: 0.1	
LAST MODIFIED: Tuesday, November 29, 2011 DOC # :		Sheet 4 OF 4	