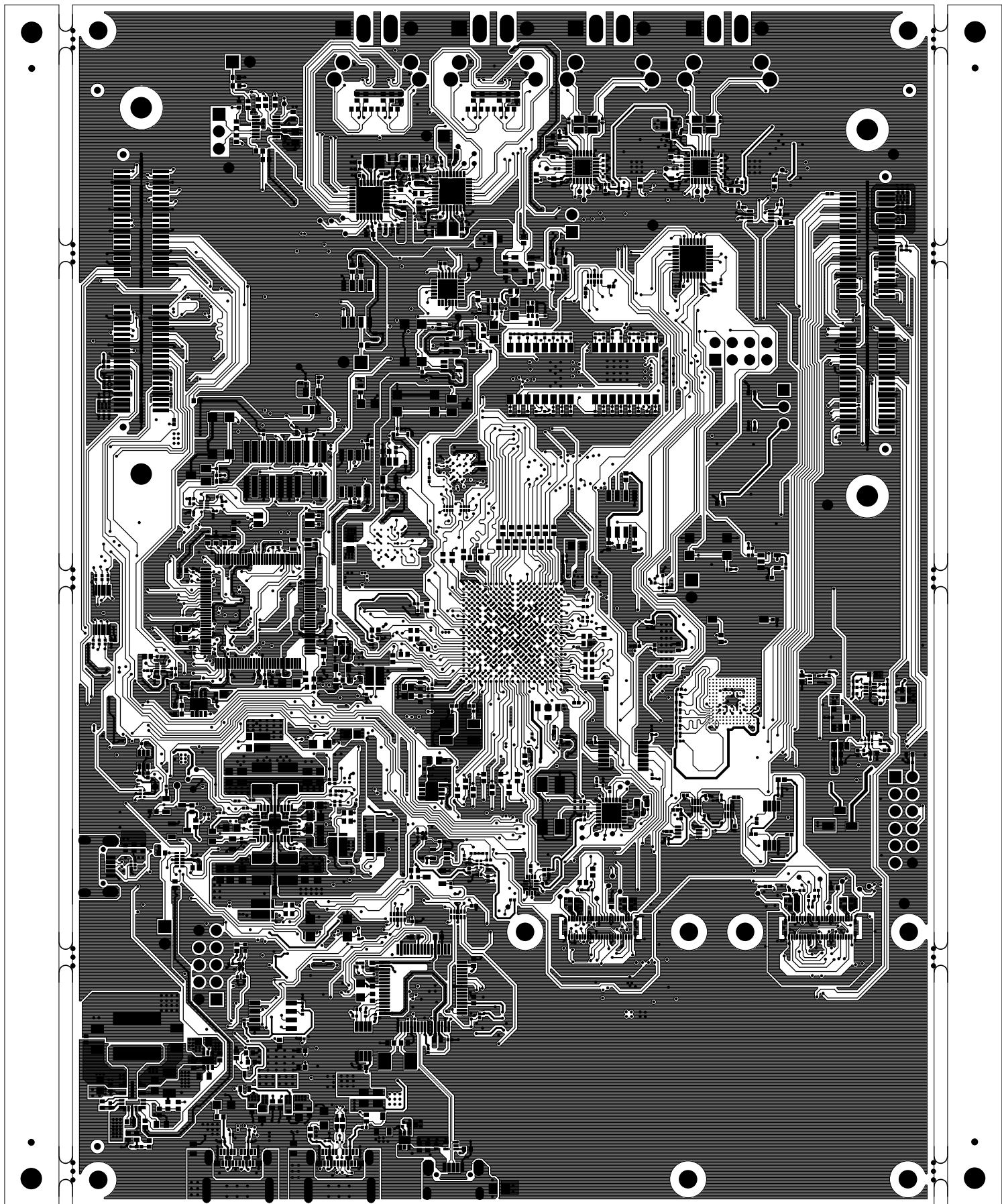

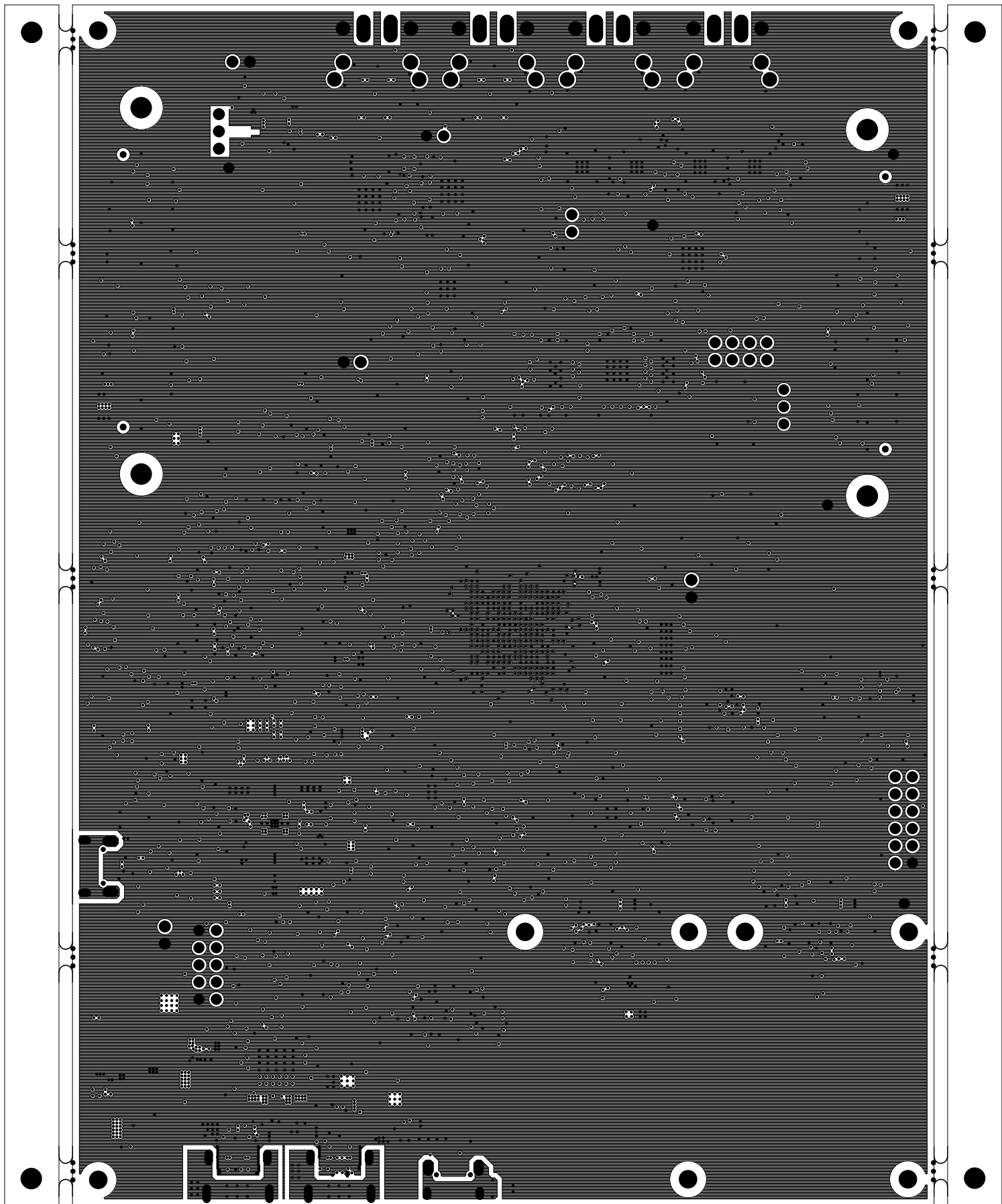



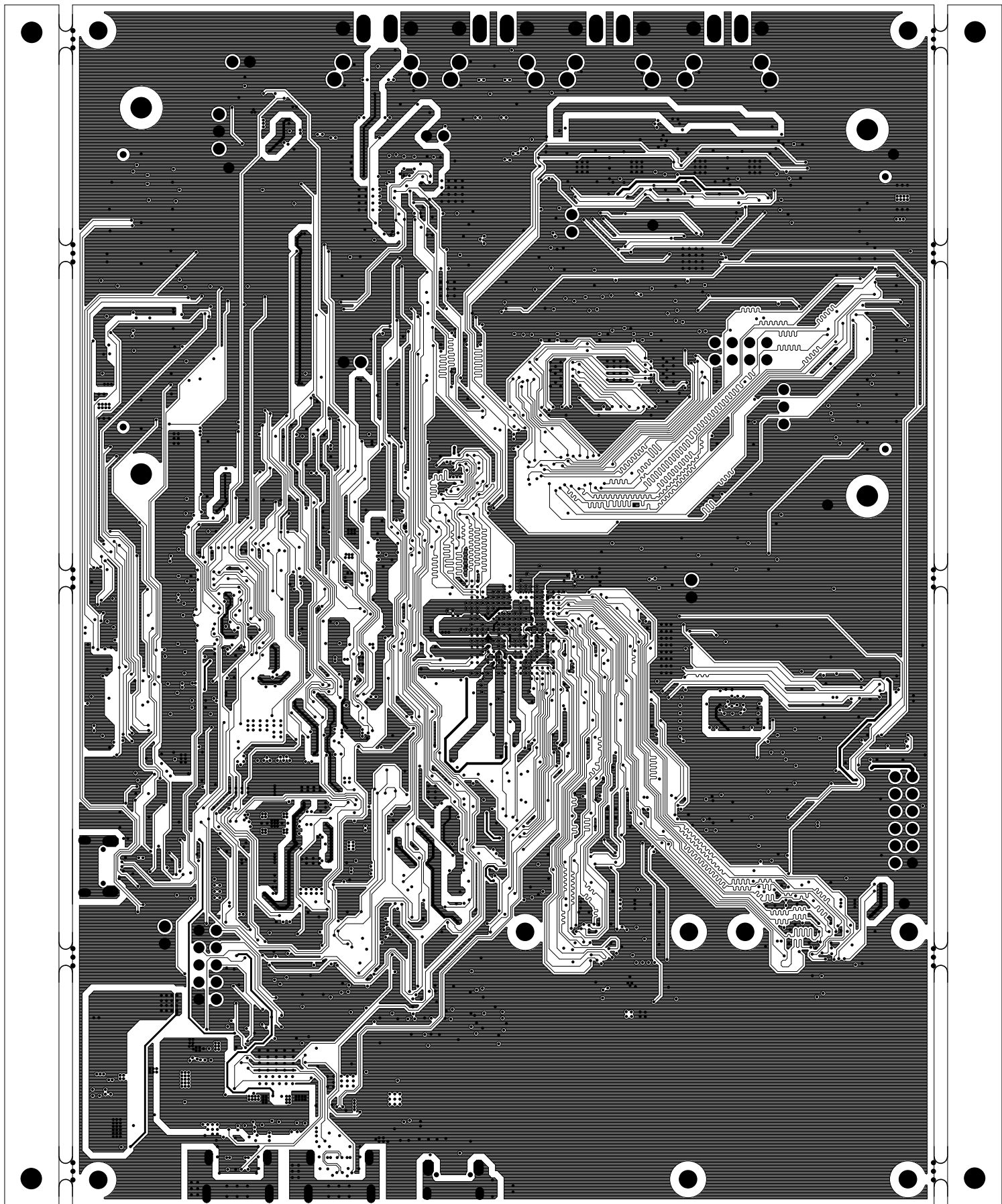
 TEXAS INSTRUMENTS		TEXAS INSTRUMENTS		PROC190E1
BOARD NAME: AM275 EVM		REV: E1	DESCRIPTION: PRIMARY-SOLDERMASK	
SCALE: 1		DATE: 16/08/24	SHEET 03 OF 13	



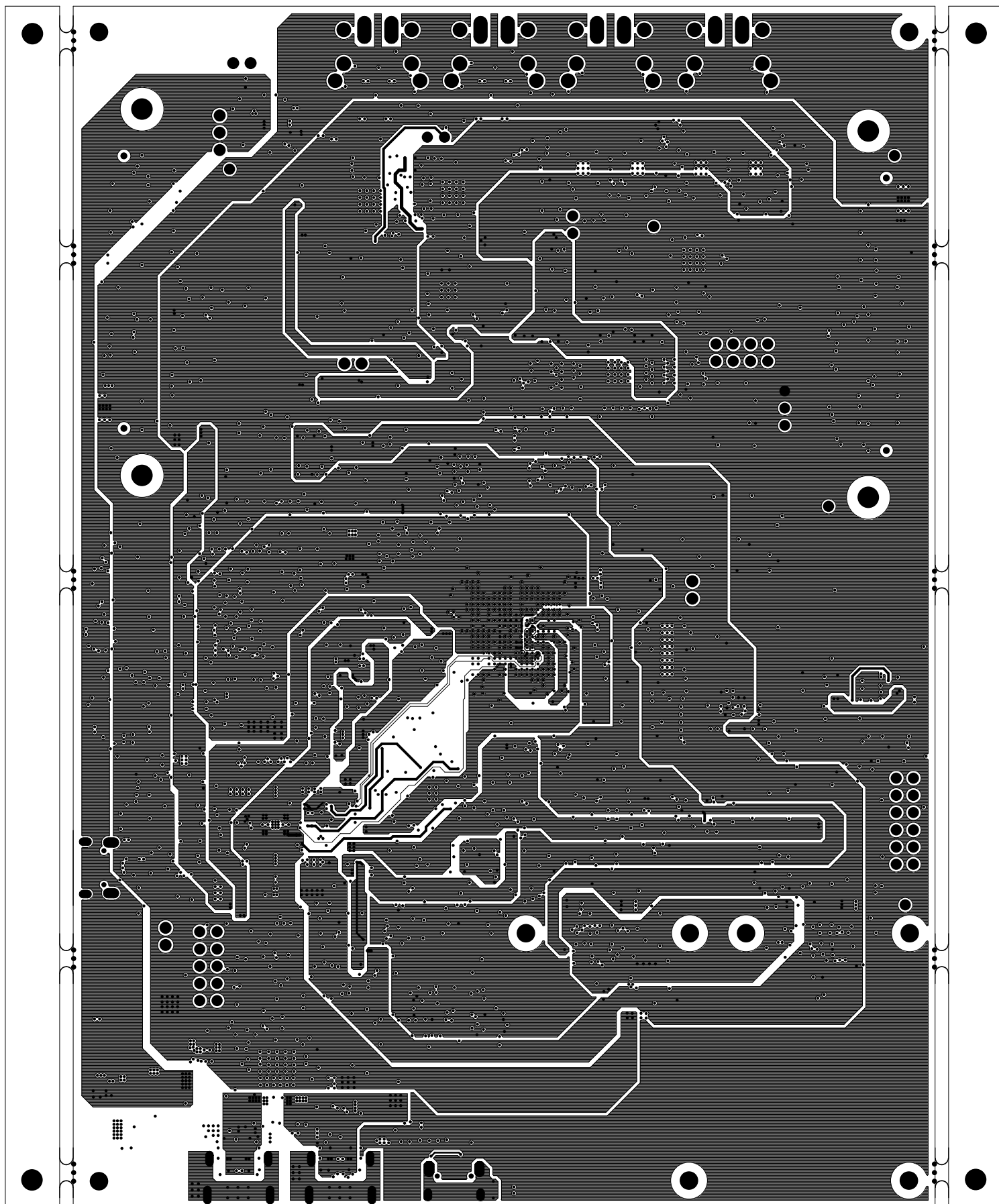
		TEXAS INSTRUMENTS		PROC190E1
BOARD NAME: AM275 EVM		REV: E1	DESCRIPTION: PRIMARY-SIDE-SIG	
SCALE: 1		DATE: 16/08/24	SHEET 04 OF 13	




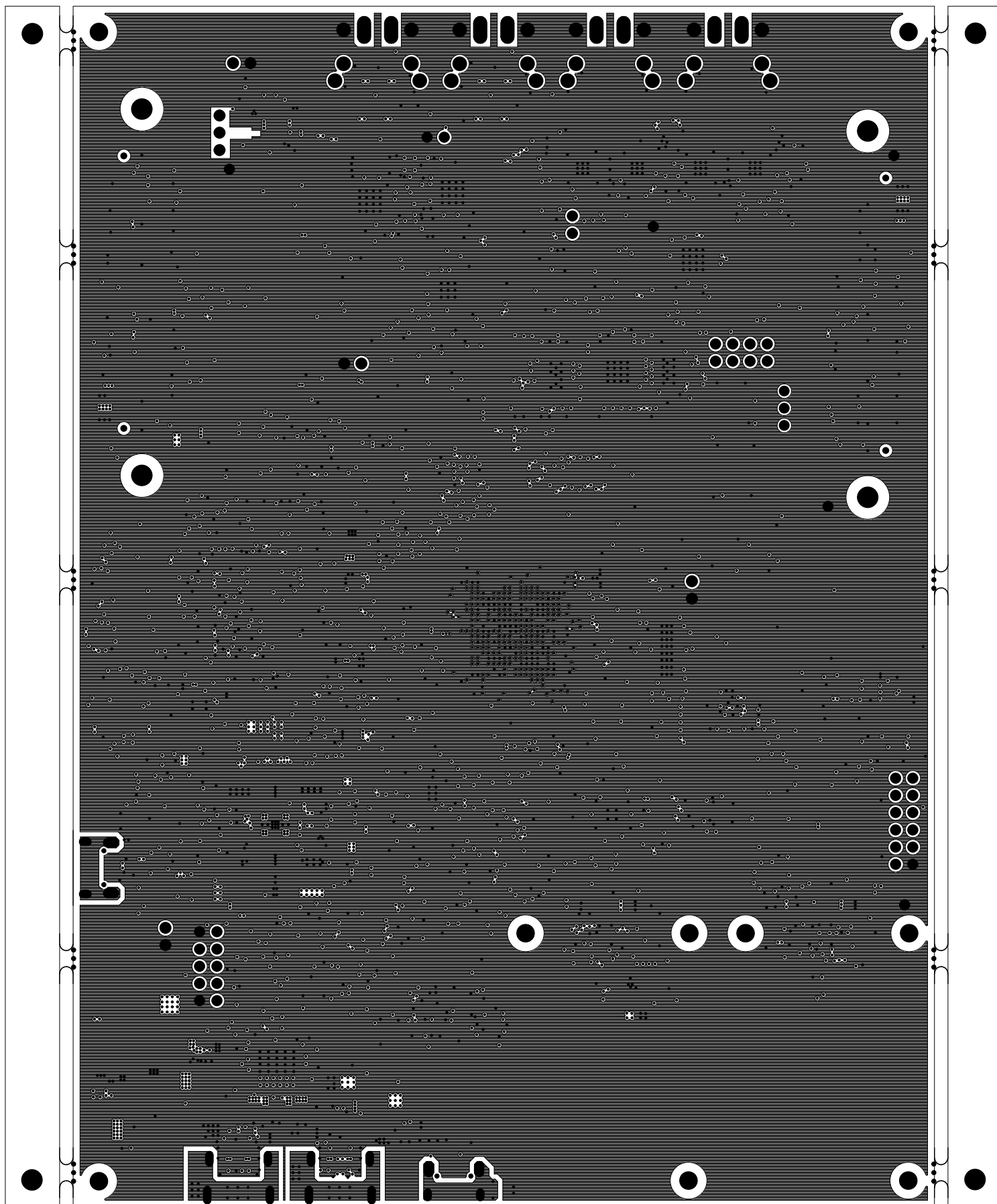
		TEXAS INSTRUMENTS		PROC190E1
BOARD NAME: AM275 EVM		REV: E1	DESCRIPTION: GROUND-PLANE-01	
SCALE: 1		DATE: 16/08/24	SHEET 05 OF 13	



		TEXAS INSTRUMENTS		PROC190E1
BOARD NAME: AM275 EVM		REV: E1	DESCRIPTION: INNER-SIGNAL-01	
SCALE: 1		DATE: 16/08/24	SHEET 06 OF 13	




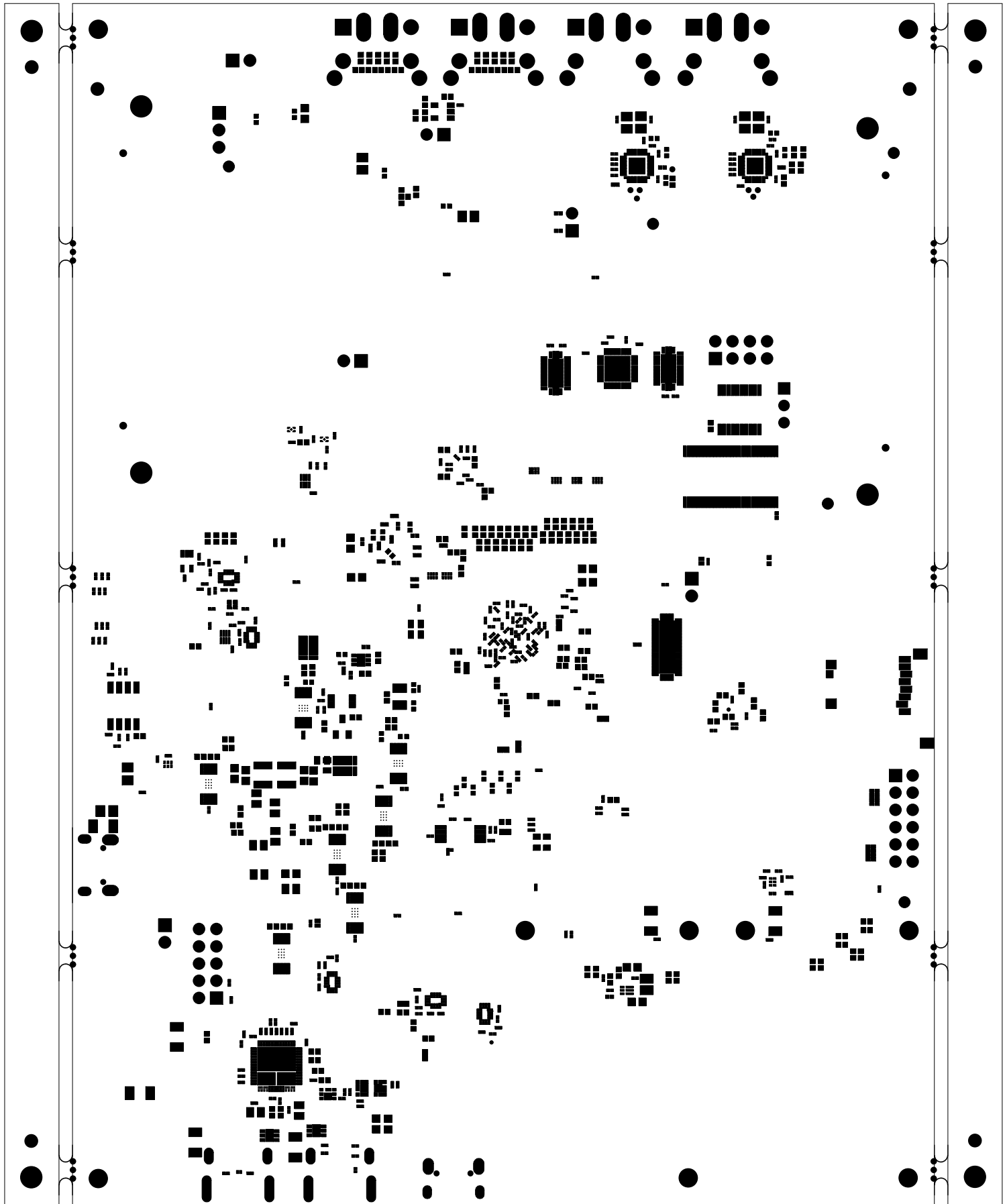
		TEXAS INSTRUMENTS		PROC190E1
BOARD NAME: AM275 EVM		REV: E1	DESCRIPTION: POWER-PLANE-01	
SCALE: 1		DATE: 16/08/24	SHEET 07 OF 13	




		TEXAS INSTRUMENTS		PROC190E1
BOARD NAME: AM275 EVM		REV: E1	DESCRIPTION: GROUND-PLANE-02	
SCALE: 1		DATE: 16/08/24	SHEET 08 OF 13	

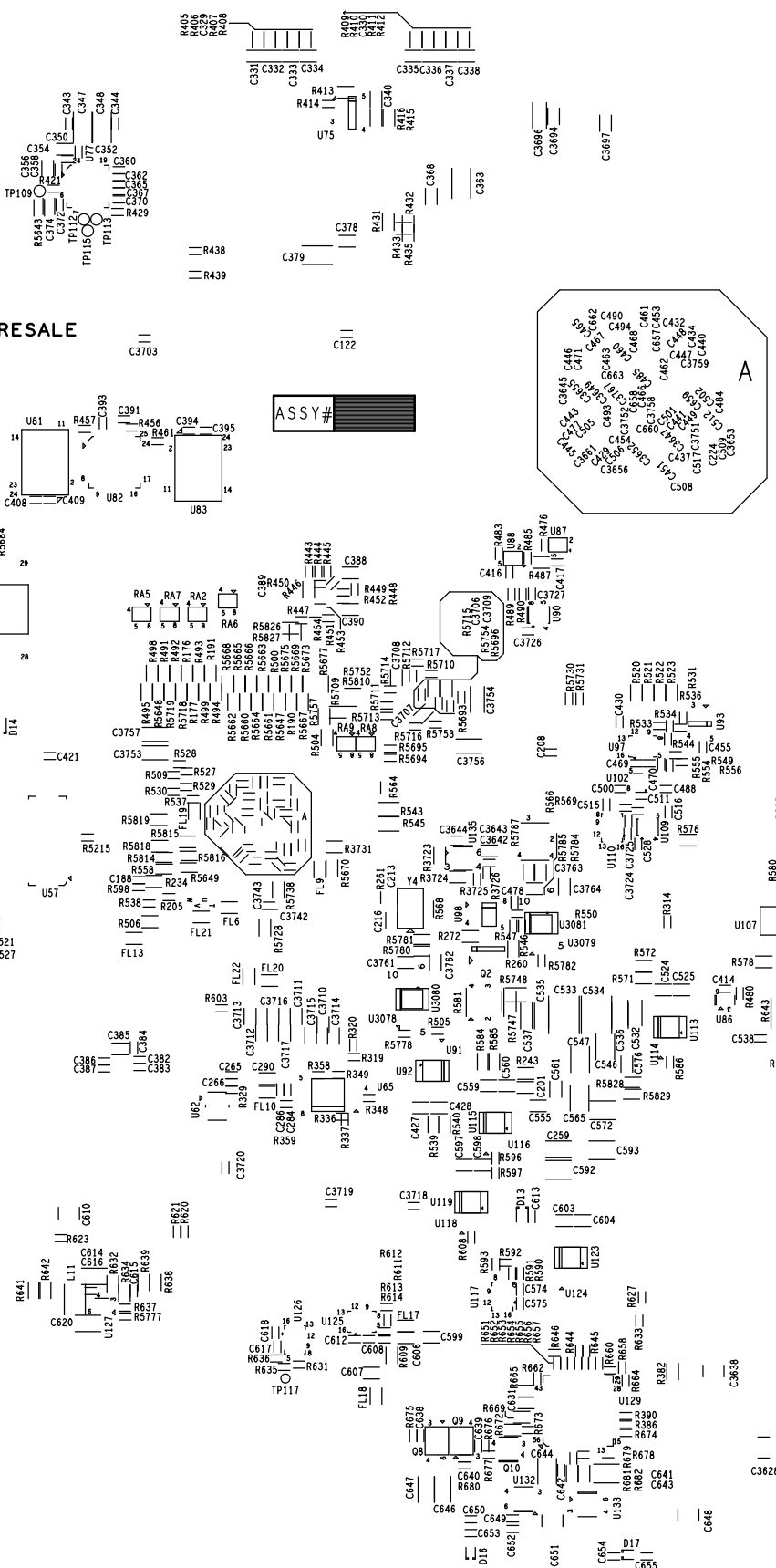
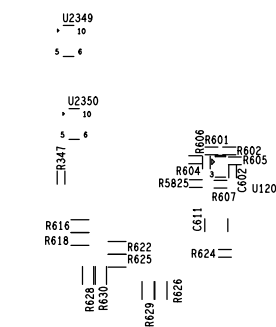
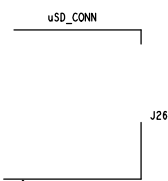


		TEXAS INSTRUMENTS		PROC190E1
BOARD NAME: AM275 EVM		REV: E1	DESCRIPTION: SECONDARY-SIDE-SIG	
SCALE: 1		DATE: 16/08/24	SHEET 09 OF 13	

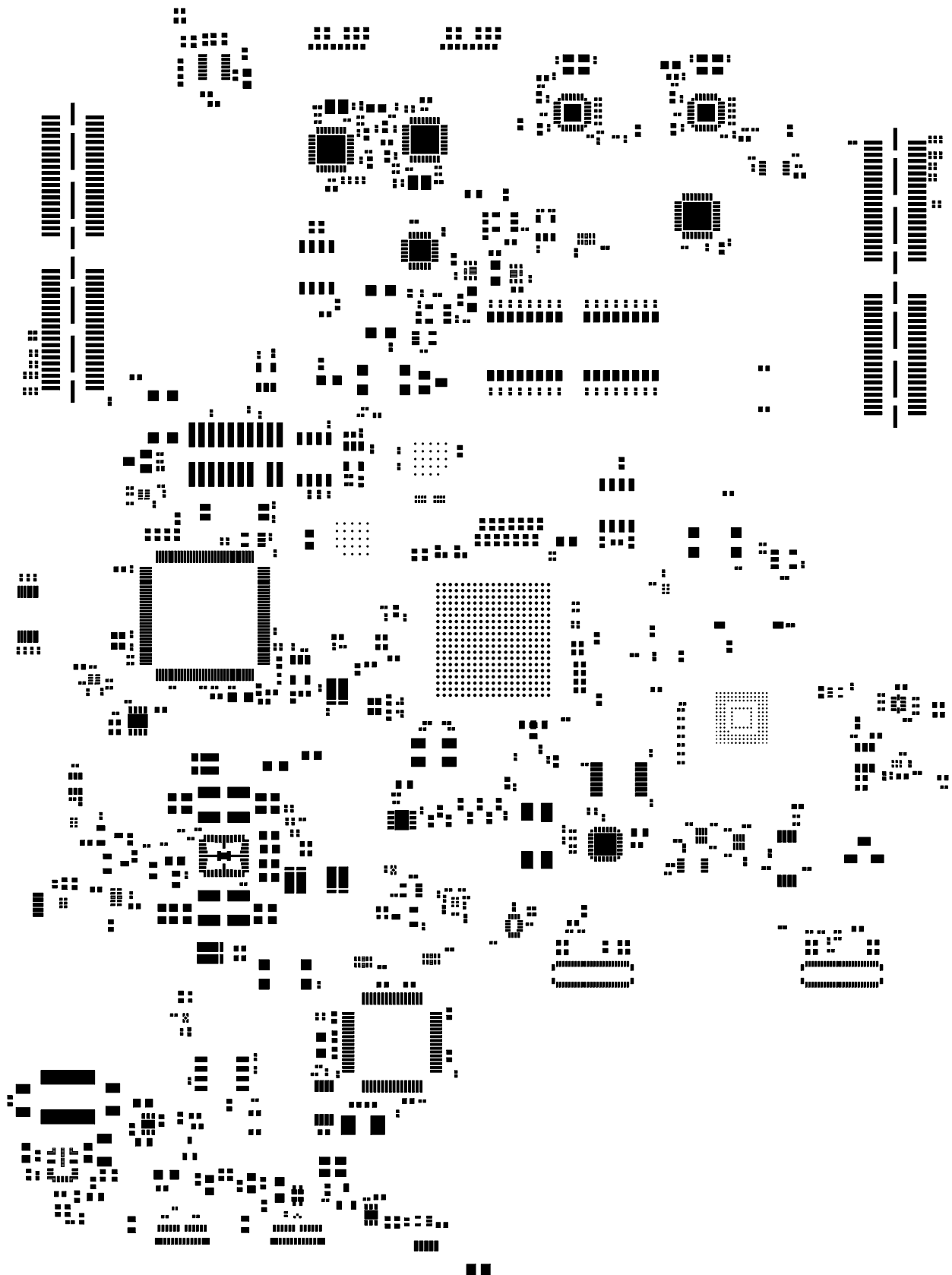


 TEXAS INSTRUMENTS		TEXAS INSTRUMENTS		PROC190E1
BOARD NAME: AM275 EVM		REV: E1	DESCRIPTION: SECONDARY-SOLDERMASK	
SCALE: 1		DATE: 16/08/24	SHEET 10 OF 13	

FOR EVALUATION ONLY,
NOT FCC APPROVED FOR RESALE



PROJ100E1	TEXAS INSTRUMENTS	BOARD NAME: AMS25 EVM
SHEET 11 OF 13	DATE: 10/08/24	REV: E1
DESCRIPTION: SECONDARY-SILKSCREEN	SCALE: 1	



TEXAS INSTRUMENTS

PROC190E1

BOARD NAME: AM275 EVM

REV: E1


DESCRIPTION: PRIMARY-PASTEMASK

SCALE: 1

DATE: 16/08/24

SHEET 12 OF 13



		TEXAS INSTRUMENTS		PROC190E1
BOARD NAME: AM275 EVM		REV: E1	DESCRIPTION: SECONDARY-PASTEMASK	
SCALE: 1		DATE: 16/08/24	SHEET 13 OF 13	