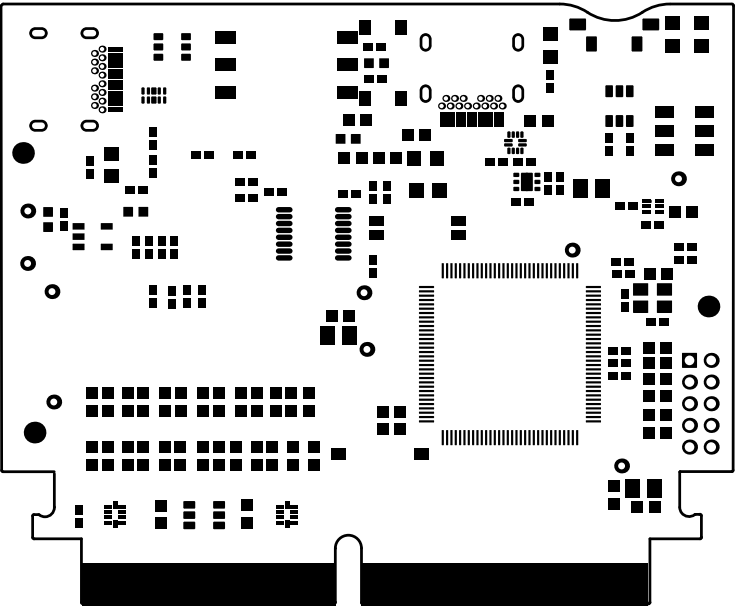
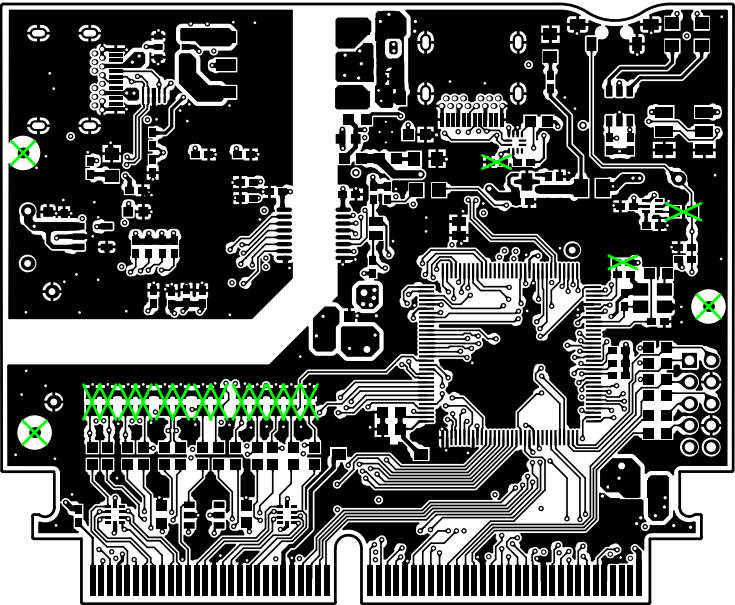


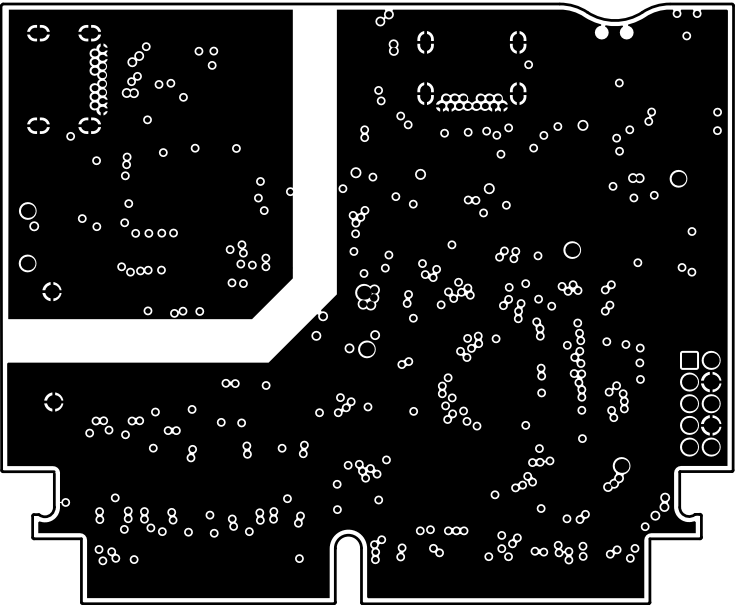
ALL ARTWORK VIEWED FROM TOP SIDE	BOARD #: MCU132	REV: E1	SUN REV: Not in version control
LAYER NAME = Top Overlay	TID #: N/A		
PLOT NAME = Top Overlay	GENERATED : 10/18/2023 1:51:44 PM		TEXAS INSTRUMENTS



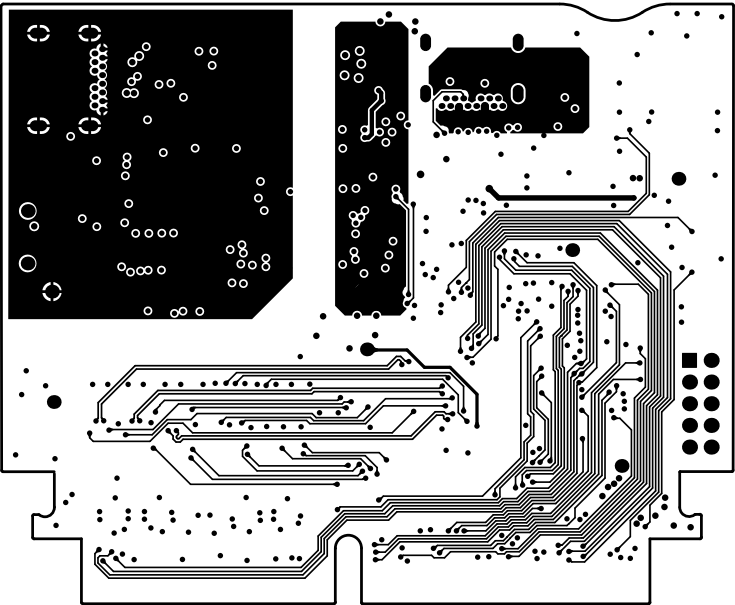
ALL ARTWORK VIEWED FROM TOP SIDE	BOARD #: MCU132	REV: E1	SUN REV: Not in version control
LAYER NAME = Top Solder	TID #: N/A		
PLOT NAME = Top Solder Mask	GENERATED : 10/18/2023 1:51:44 PM		TEXAS INSTRUMENTS



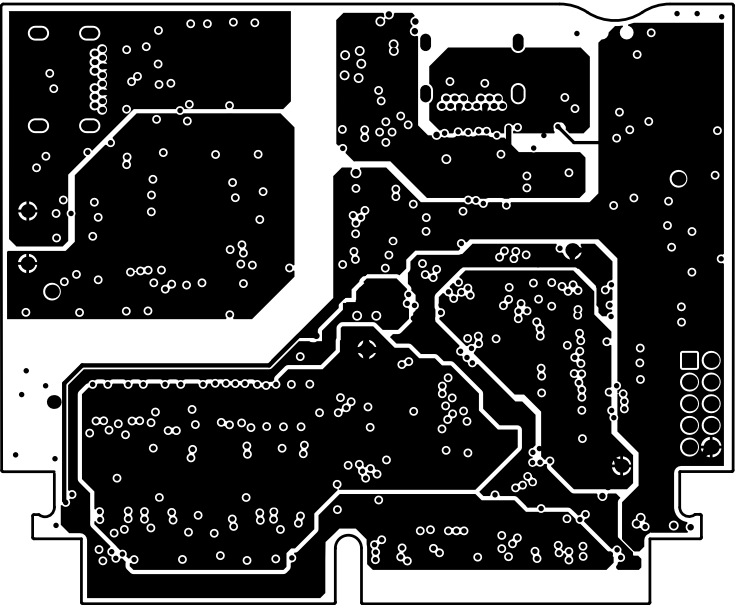
ALL ARTWORK VIEWED FROM TOP SIDE	BOARD #: MCU132	REV: E1	SUN REV: Not in version control
LAYER NAME = Top Signal Layer	TID #: N/A		
PLOT NAME = Top Layer	GENERATED : 10/18/2023 1:51:44 PM		TEXAS INSTRUMENTS



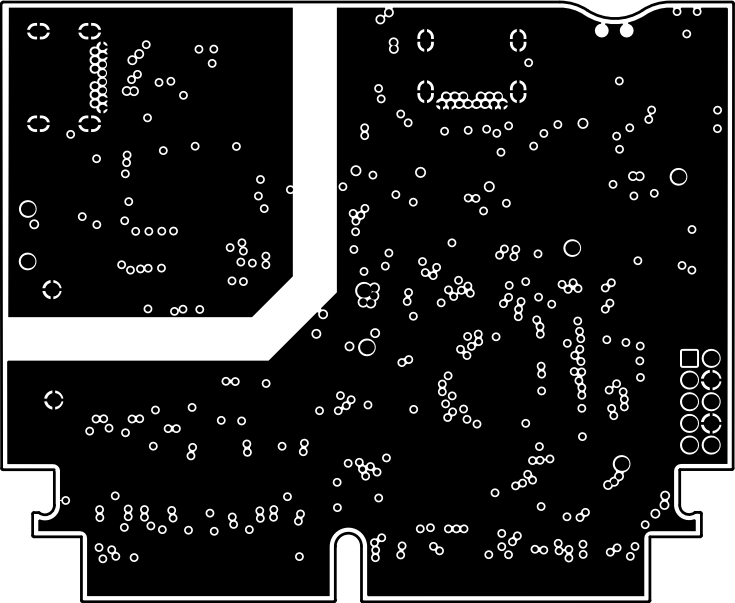
ALL ARTWORK VIEWED FROM TOP SIDE	BOARD #: MCU132	REV: E1	SVN REV: Not in version control
LAYER NAME = GND1	TID #: N/A		
PLOT NAME = GND1	GENERATED : 10/18/2023 1:51:45 PM		TEXAS INSTRUMENTS



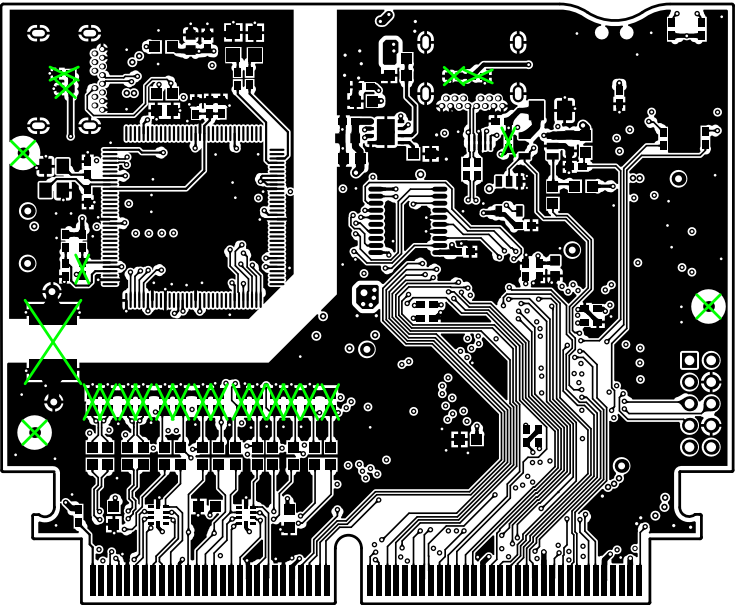
ALL ARTWORK VIEWED FROM TOP SIDE	BOARD #: MCU132	REV: E1	SUN REV: Not in version control
LAYER NAME = Mid Layer	TID #: N/A		
PLOT NAME = Mid Layer	GENERATED : 10/18/2023 1:51:45 PM		TEXAS INSTRUMENTS



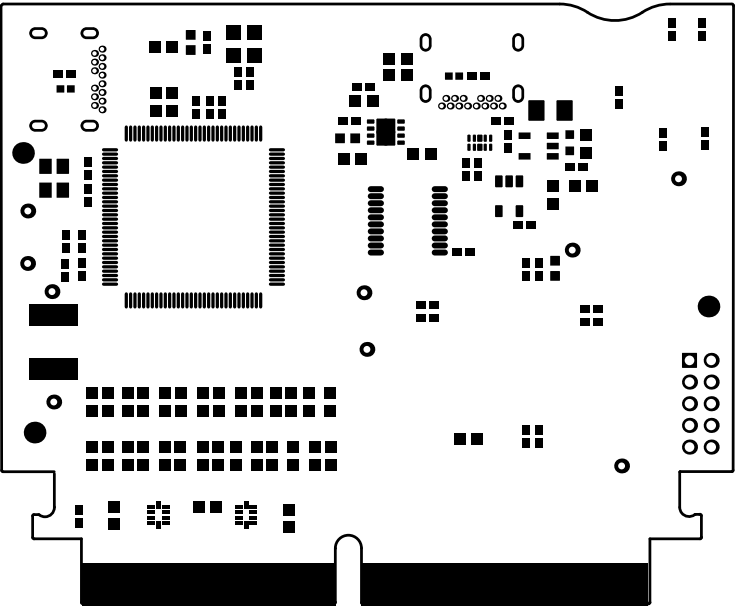
ALL ARTWORK VIEWED FROM TOP SIDE	BOARD #: MCU132	REV: E1	SUN REV: Not in version control
LAYER NAME = PWR	TID #: N/A		
PLOT NAME = PWR	GENERATED : 10/18/2023 1:51:45 PM		TEXAS INSTRUMENTS



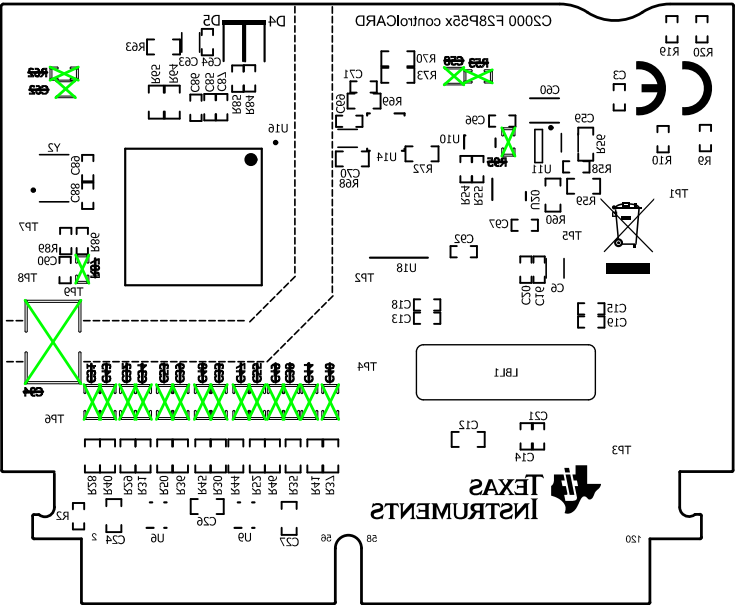
ALL ARTWORK VIEWED FROM TOP SIDE	BOARD #: MCU132	REV: E1	SVN REV: Not in version control
LAYER NAME = GND2	TID #: N/A		
PLOT NAME = GND2	GENERATED : 10/18/2023 1:51:45 PM		TEXAS INSTRUMENTS



ALL ARTWORK VIEWED FROM TOP SIDE	BOARD #: MCU132	REV: E1	SUN REV: Not in version control
LAYER NAME = Bottom Signal Layer	TID #: N/A		
PLOT NAME = Bottom Layer	GENERATED : 10/18/2023 1:51:45 PM		TEXAS INSTRUMENTS



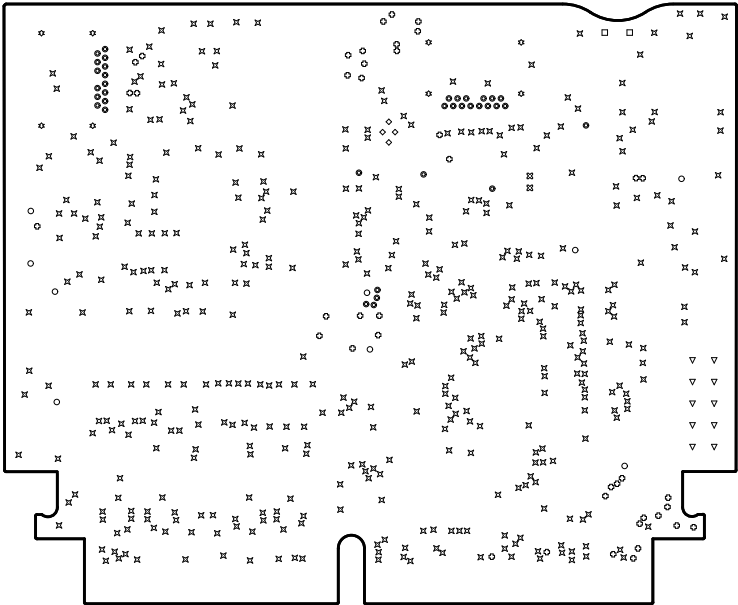
ALL ARTWORK VIEWED FROM TOP SIDE	BOARD #: MCU132	REV: E1	SUN REV: Not in version control
LAYER NAME = Bottom Solder	TID #: N/A		
PLOT NAME = Bottom Solder Mask	GENERATED : 10/18/2023 1:51:45 PM		TEXAS INSTRUMENTS



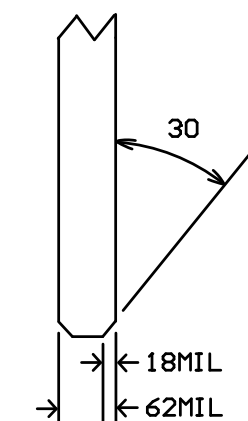
ALL ARTWORK VIEWED FROM TOP SIDE	BOARD #: MCU132	REV: E1	SUN REV: Not in version control
LAYER NAME = Bottom Overlay	TID #: N/A		
PLOT NAME = Bottom Overlay	GENERATED : 10/18/2023 1:51:45 PM	TEXAS INSTRUMENTS	

Symbol	Count	Hole Size	Plated	Hole Type
⌘	2	7.87mil (0.200mm)	PTH	Round
□	2	35.43mil (0.900mm)	NPTH	Round
◇	4	7.99mil (0.203mm)	PTH	Round
☆	8	23.62mil (0.600mm)	PTH	Slot
○	9	25.00mil (0.635mm)	PTH	Round
▽	10	35.04mil (0.890mm)	PTH	Round
◎	36	15.75mil (0.400mm)	PTH	Round
⊕	42	11.81mil (0.300mm)	PTH	Round
✕	443	9.84mil (0.250mm)	PTH	Round
	556 Total			

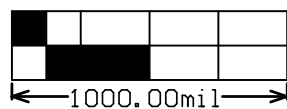
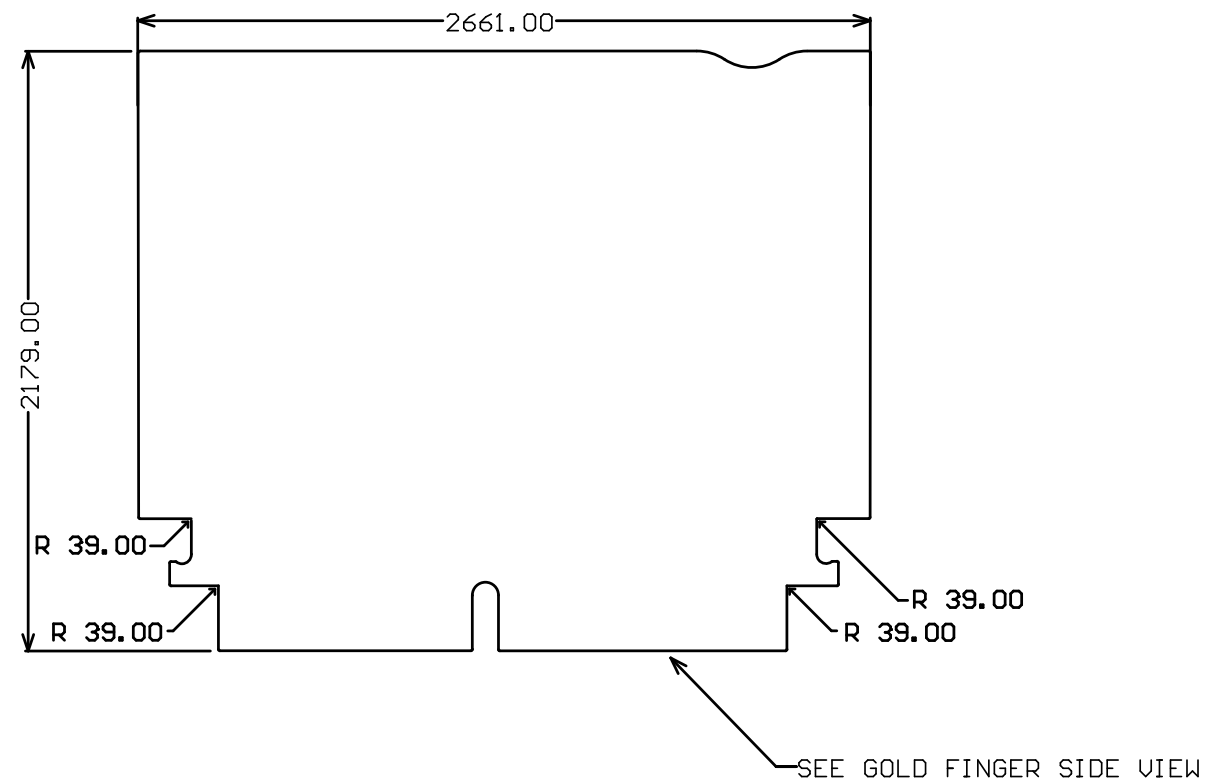
Slot definitions : Routed Path Length = Calculated from tool start centre position to tool end centre position.
Hole Length = Routed Path Length + Tool Size = Slot length as defined in the PCB layout



ALL ARTWORK VIEWED FROM TOP SIDE	BOARD #: MCU132	REV: E1	SUN REV: Not in version control
LAYER NAME = Drill Drawing	TID #: N/A		
PLOT NAME = Drill Drawing	GENERATED : 10/18/2023 1:51:45 PM		TEXAS INSTRUMENTS



GOLD FINGER
SIDE VIEW



ALL ARTWORK VIEWED FROM TOP SIDE	BOARD #: MCU132	REV: E1	SUN REV: Not in version control
LAYER NAME = M2 Board Dimensions	TID #: N/A		
PLOT NAME = Board Dimensions	GENERATED : 10/18/2023 1:51:46 PM		TEXAS INSTRUMENTS