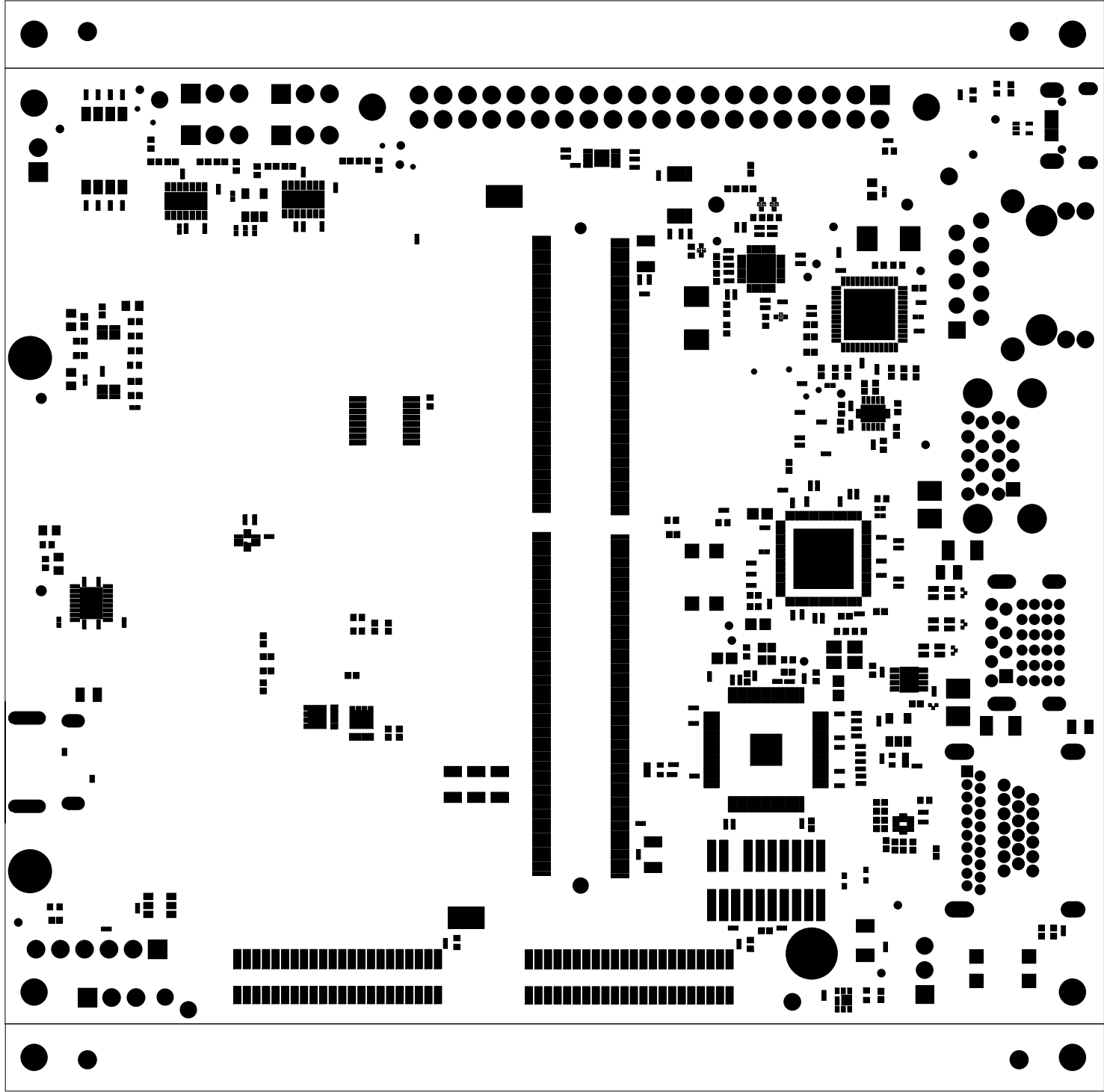

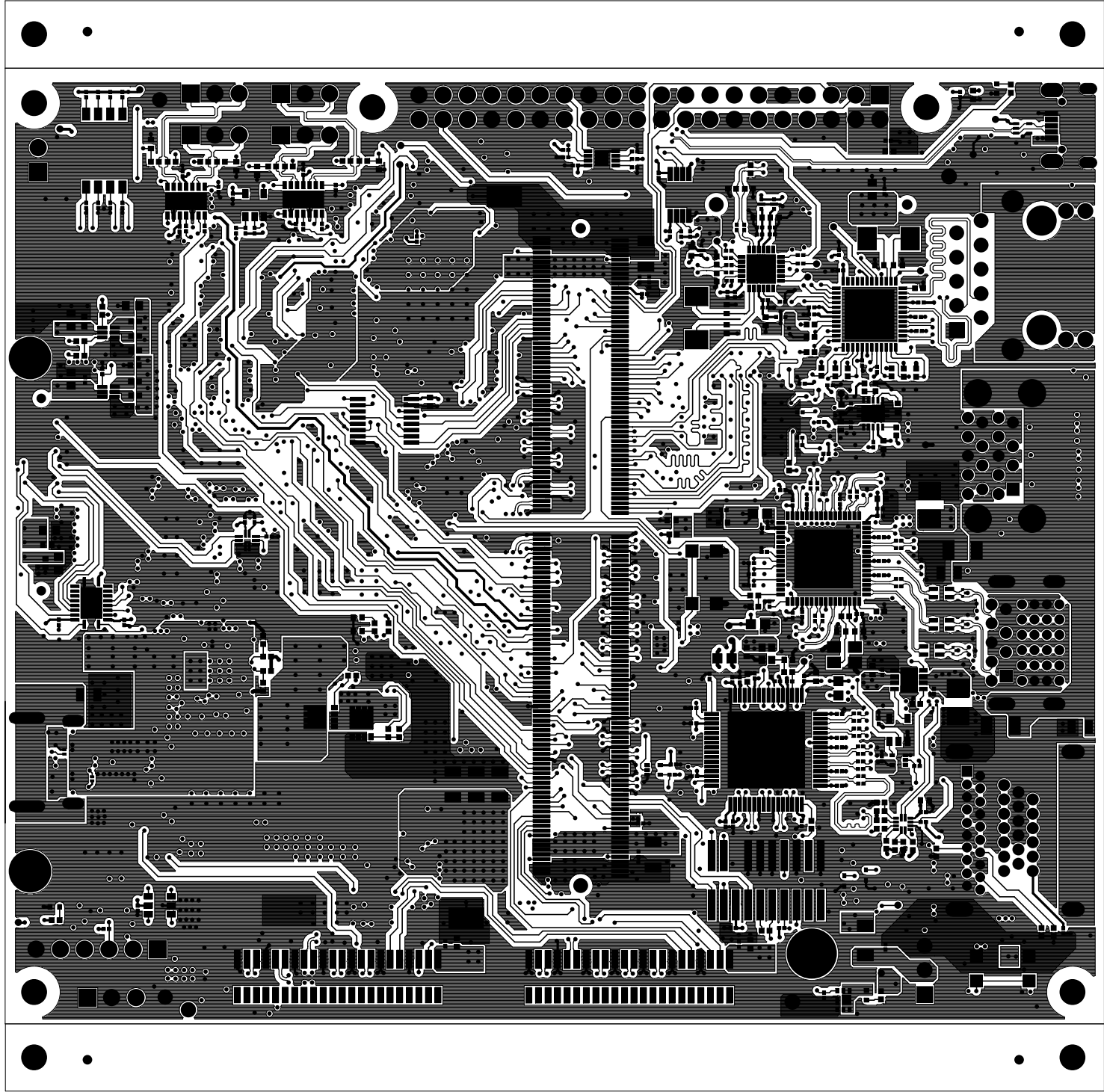

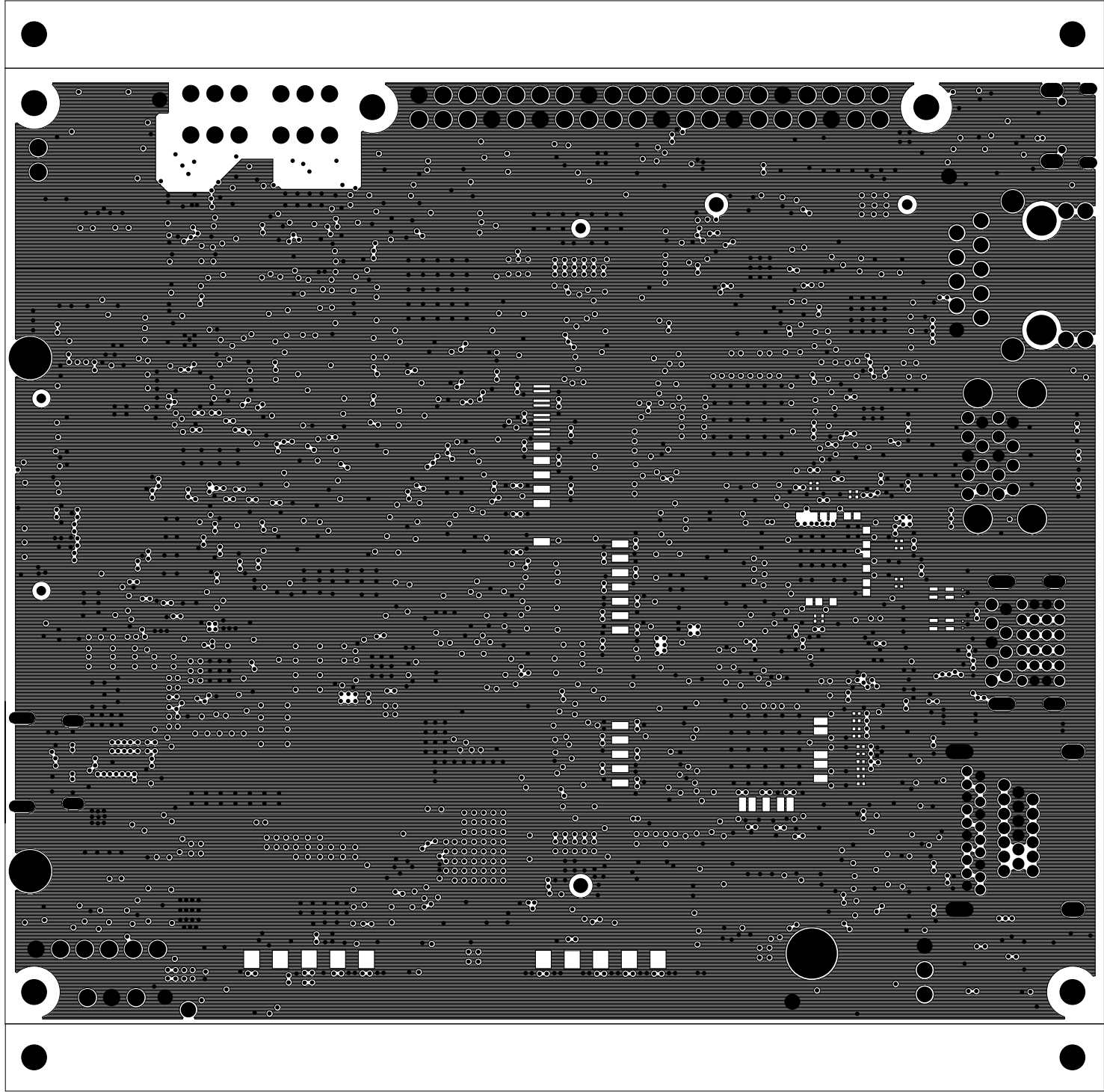
		TEXAS INSTRUMENTS		PROC125E1	
BOARD NAME: J7 SK CARRIER BOARD		REV: E1	DESCRIPTION: PRIMARY-SILKSCREEN		
SCALE: 1		DATE: 13/09/2022	SHEET 02 OF 19		




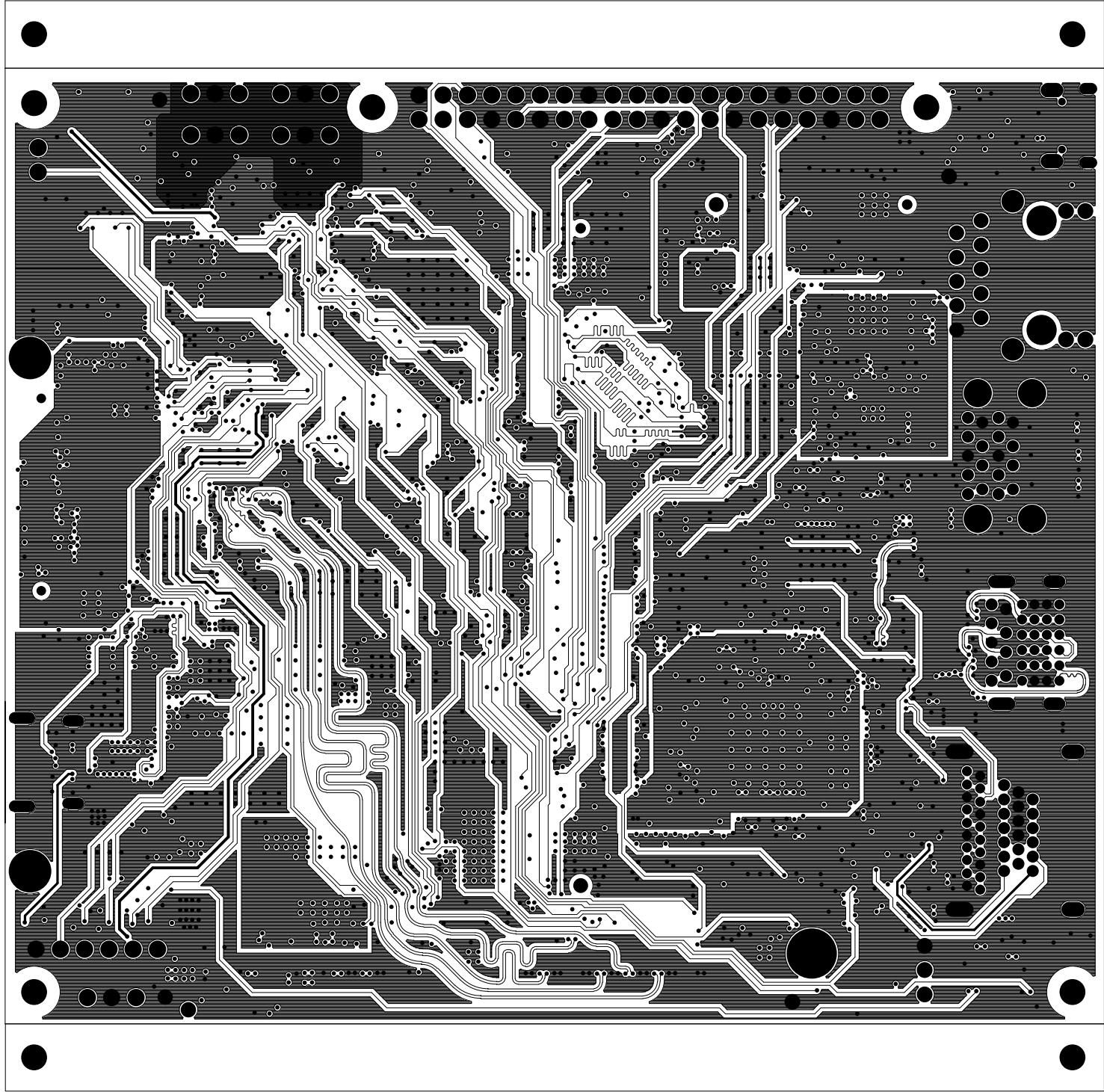
		TEXAS INSTRUMENTS		PROC125E1
BOARD NAME: J7 SK CARRIER BOARD		REV: E1	DESCRIPTION: PRIMARY-SOLDERMASK	
SCALE: 1		DATE: 13/09/2022	SHEET 03 OF 19	




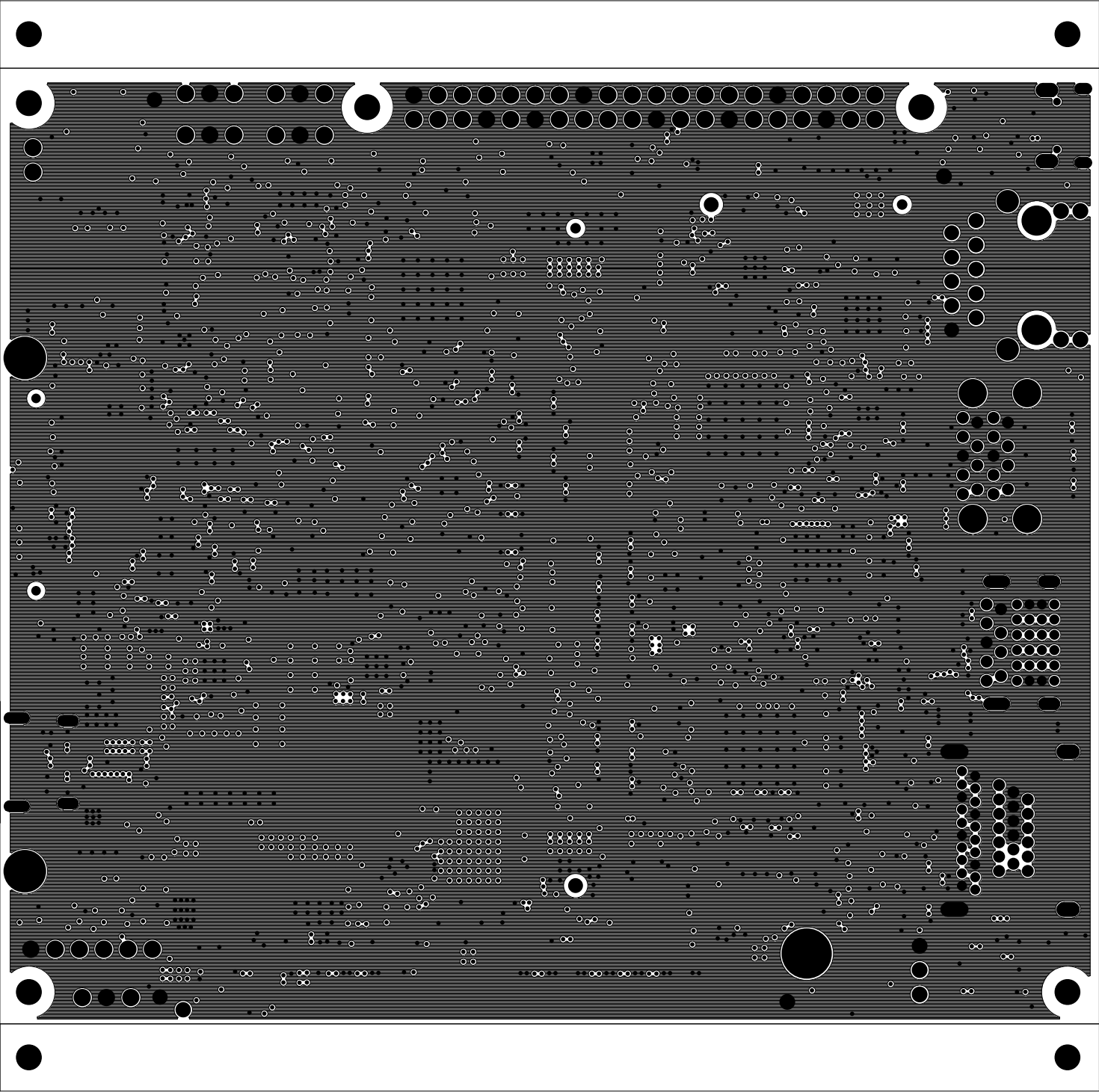
		TEXAS INSTRUMENTS		PROC125E1
BOARD NAME: J7 SK CARRIER BOARD		REV: E1	DESCRIPTION: PRIMARY-SIDE-SIG	
SCALE: 1		DATE: 13/09/2022	SHEET 04 OF 19	




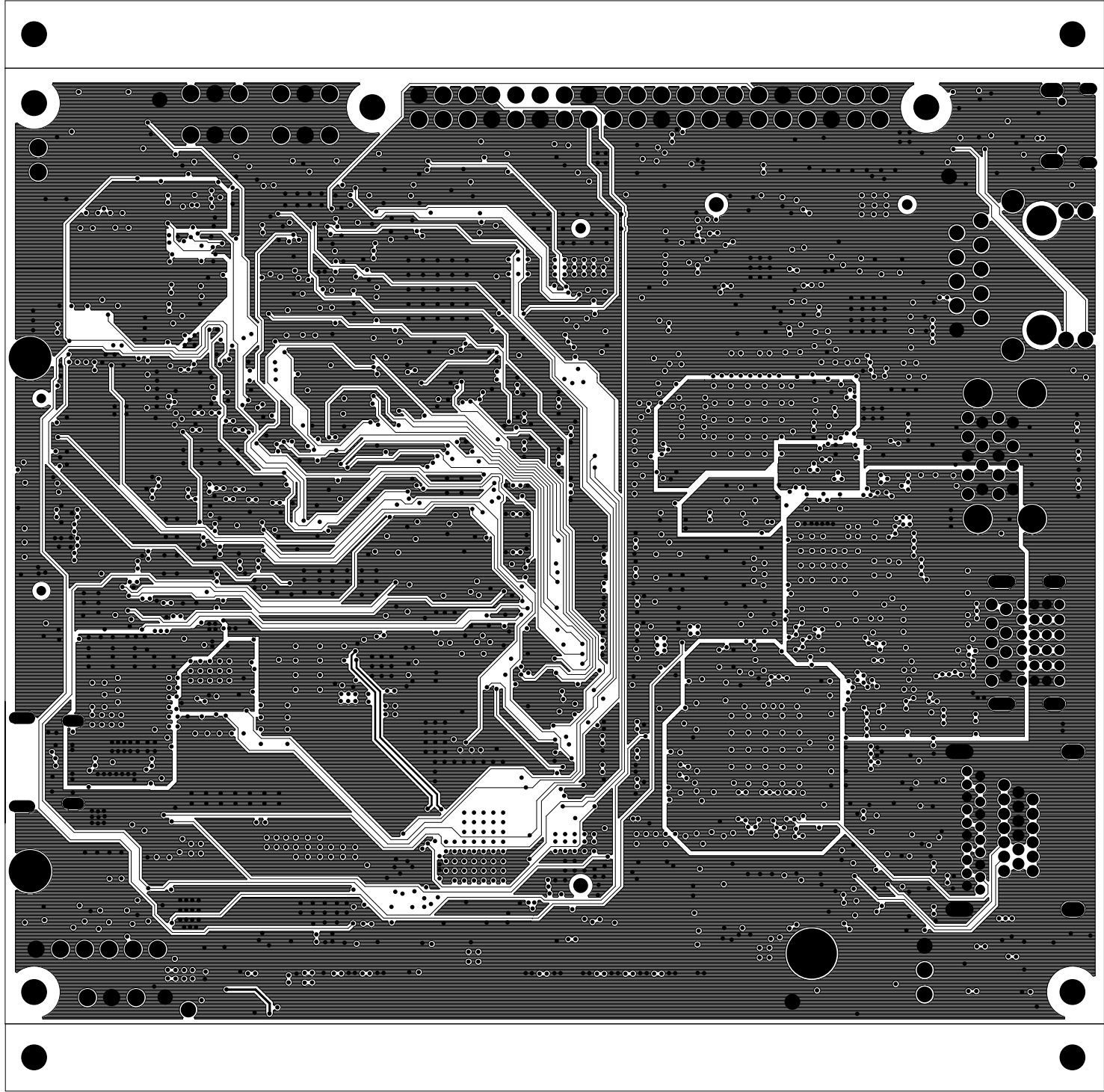
		TEXAS INSTRUMENTS		PROC125E1
BOARD NAME: J7 SK CARRIER BOARD		REV: E1	DESCRIPTION: GROUND-PLANE-01	
SCALE: 1		DATE: 13/09/2022	SHEET 05 OF 19	




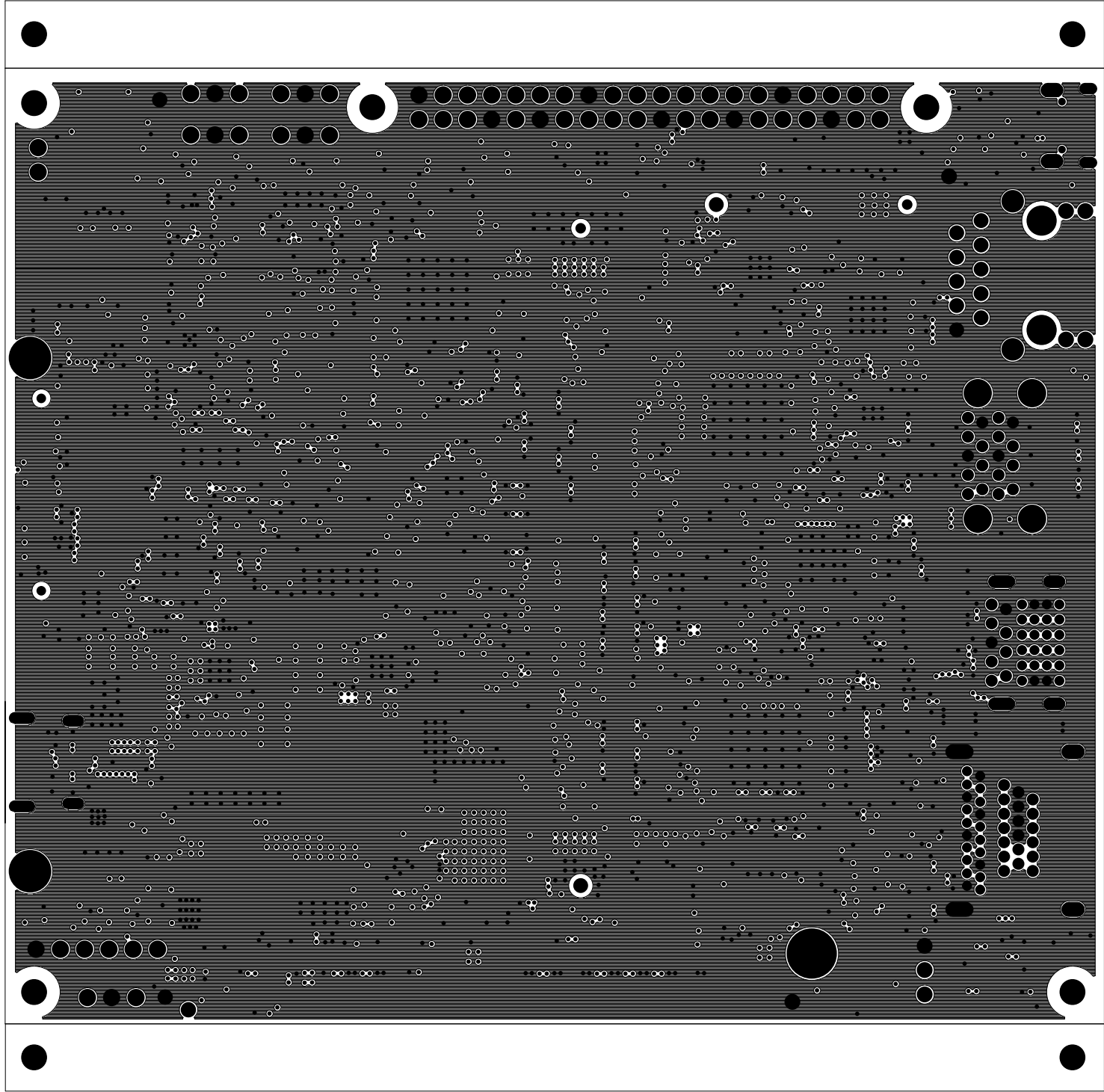
		TEXAS INSTRUMENTS		PROC125E1
BOARD NAME: J7 SK CARRIER BOARD		REV: E1	DESCRIPTION: INNER-SIGNAL-01	
SCALE: 1		DATE: 13/09/2022	SHEET 06 OF 19	




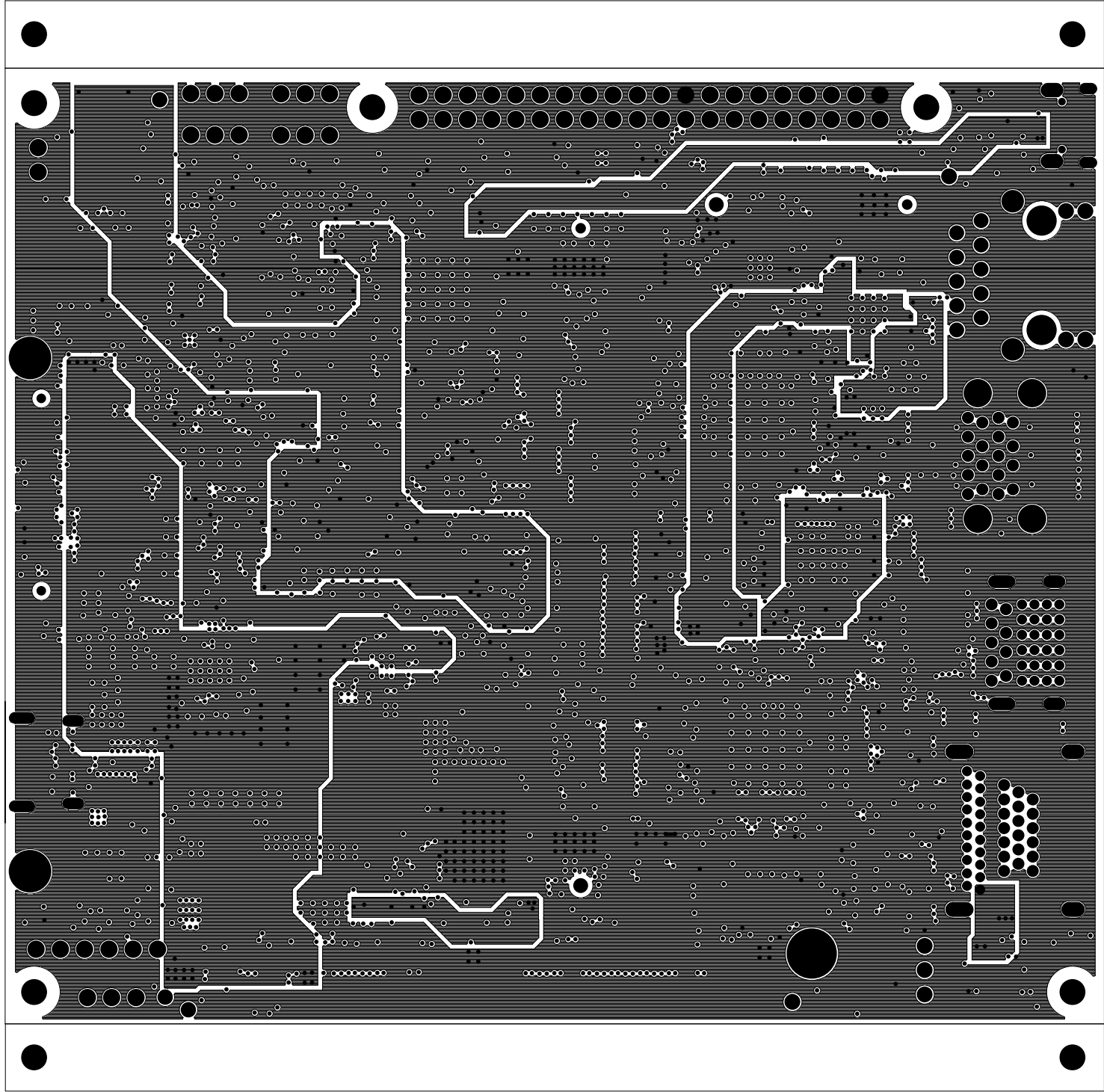
		TEXAS INSTRUMENTS		PROC125E1
BOARD NAME: J7 SK CARRIER BOARD		REV: E1	DESCRIPTION: GROUND-PLANE-02	
SCALE: 1		DATE: 13/09/2022	SHEET 07 OF 19	




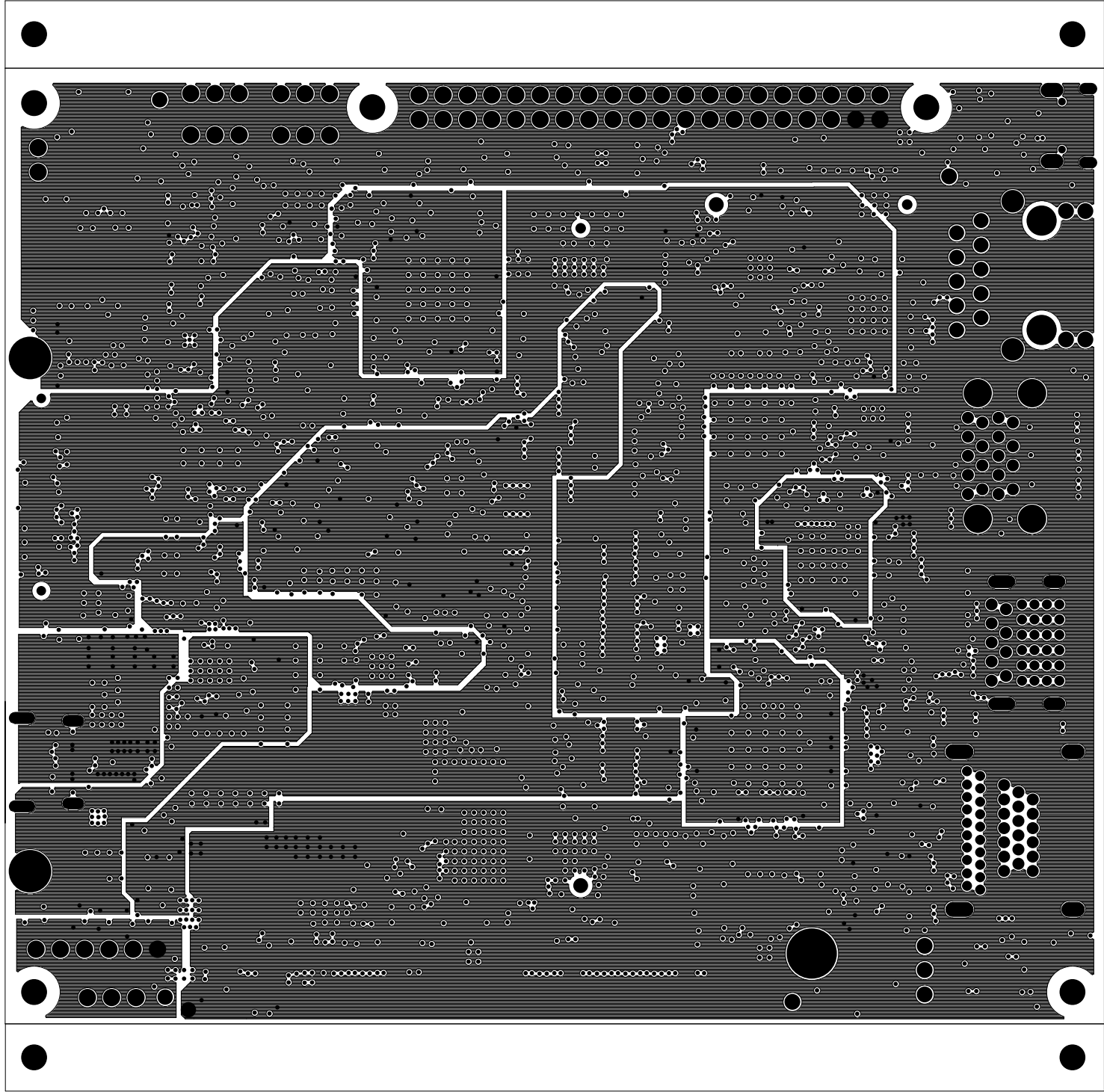
		TEXAS INSTRUMENTS		PROC125E1
BOARD NAME: J7 SK CARRIER BOARD		REV: E1	DESCRIPTION: INNER-SIGNAL-02	
SCALE: 1		DATE: 13/09/2022	SHEET 08 OF 19	




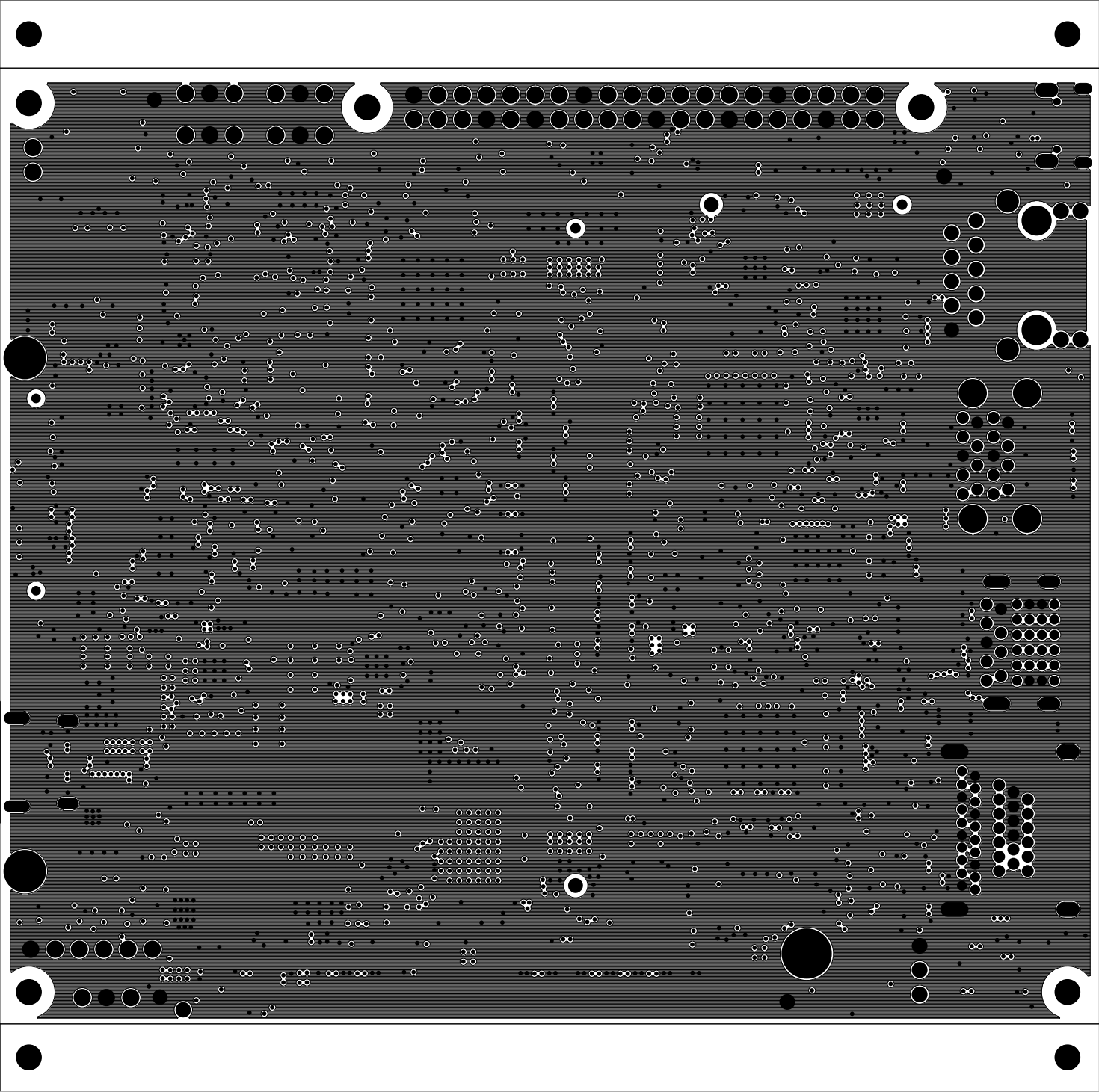
		TEXAS INSTRUMENTS		PROC125E1
BOARD NAME: J7 SK CARRIER BOARD		REV: E1	DESCRIPTION: GROUND-PLANE-03	
SCALE: 1		DATE: 13/09/2022	SHEET 09 OF 19	




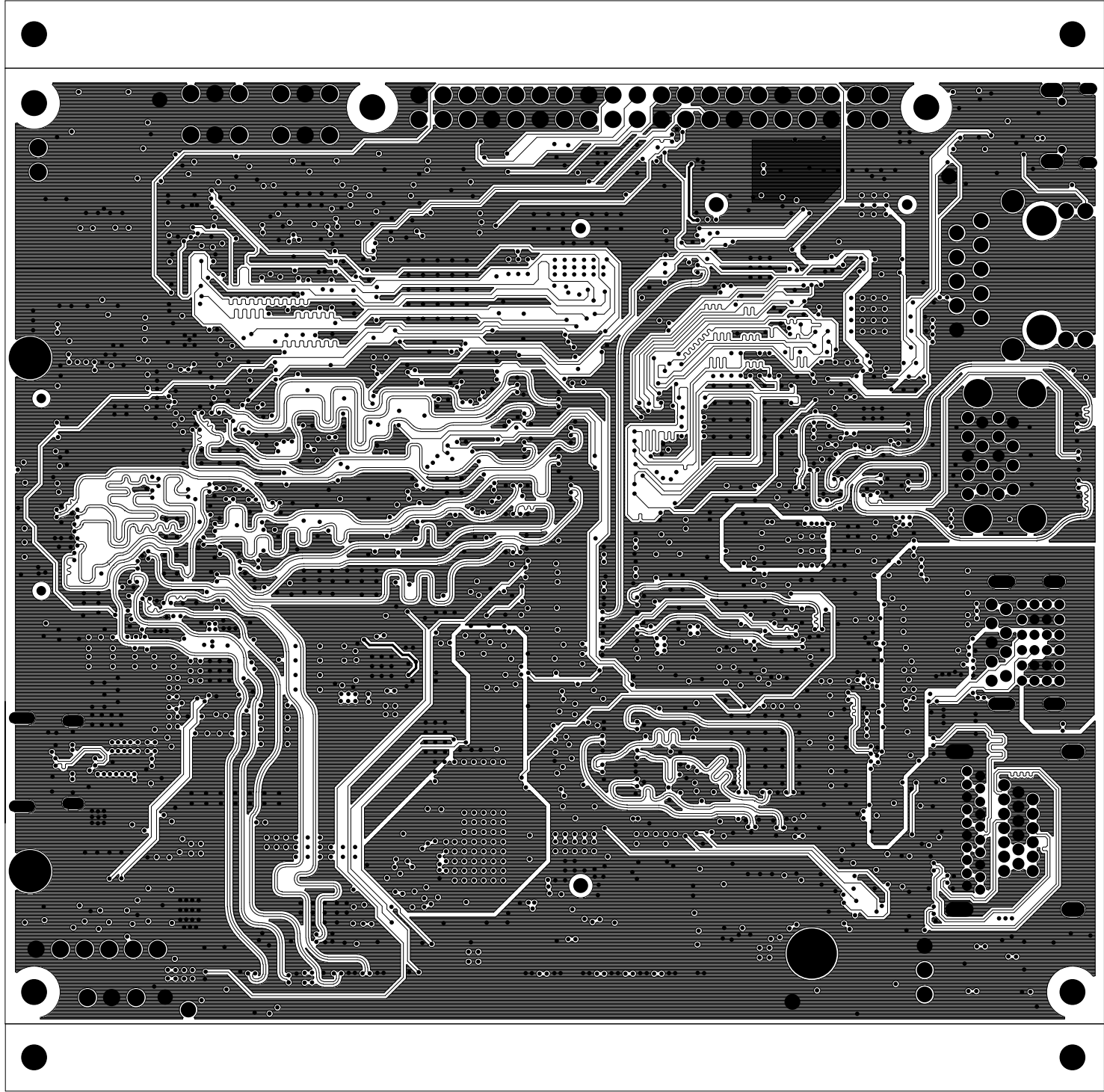
		TEXAS INSTRUMENTS		PROC125E1
BOARD NAME: J7 SK CARRIER BOARD		REV: E1	DESCRIPTION: POWER-PLANE-01	
SCALE: 1		DATE: 13/09/2022	SHEET 10 OF 19	




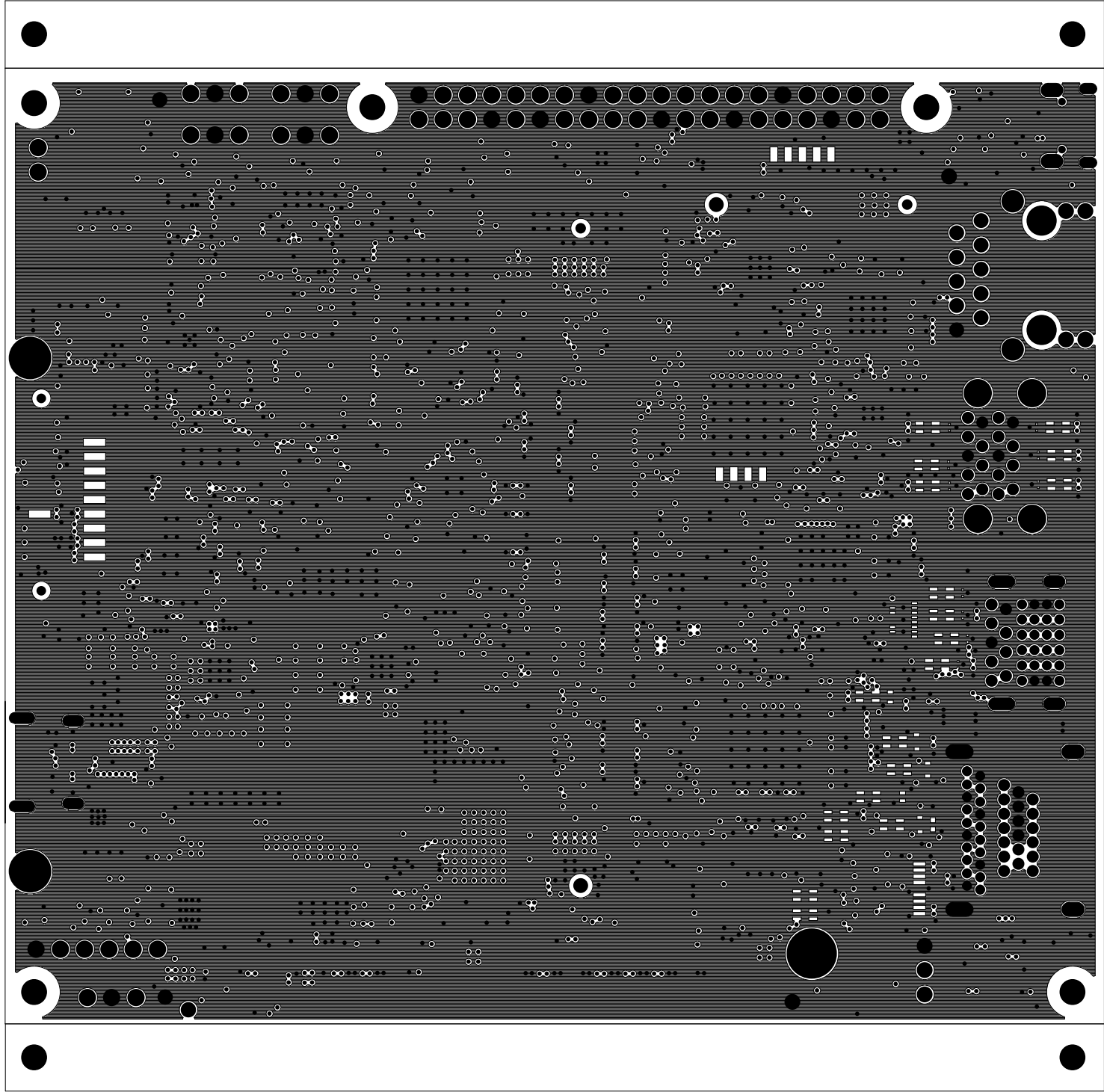
		TEXAS INSTRUMENTS		PROC125E1
BOARD NAME: J7 SK CARRIER BOARD		REV: E1	DESCRIPTION: POWER-PLANE-02	
SCALE: 1		DATE: 13/09/2022	SHEET 11 OF 19	




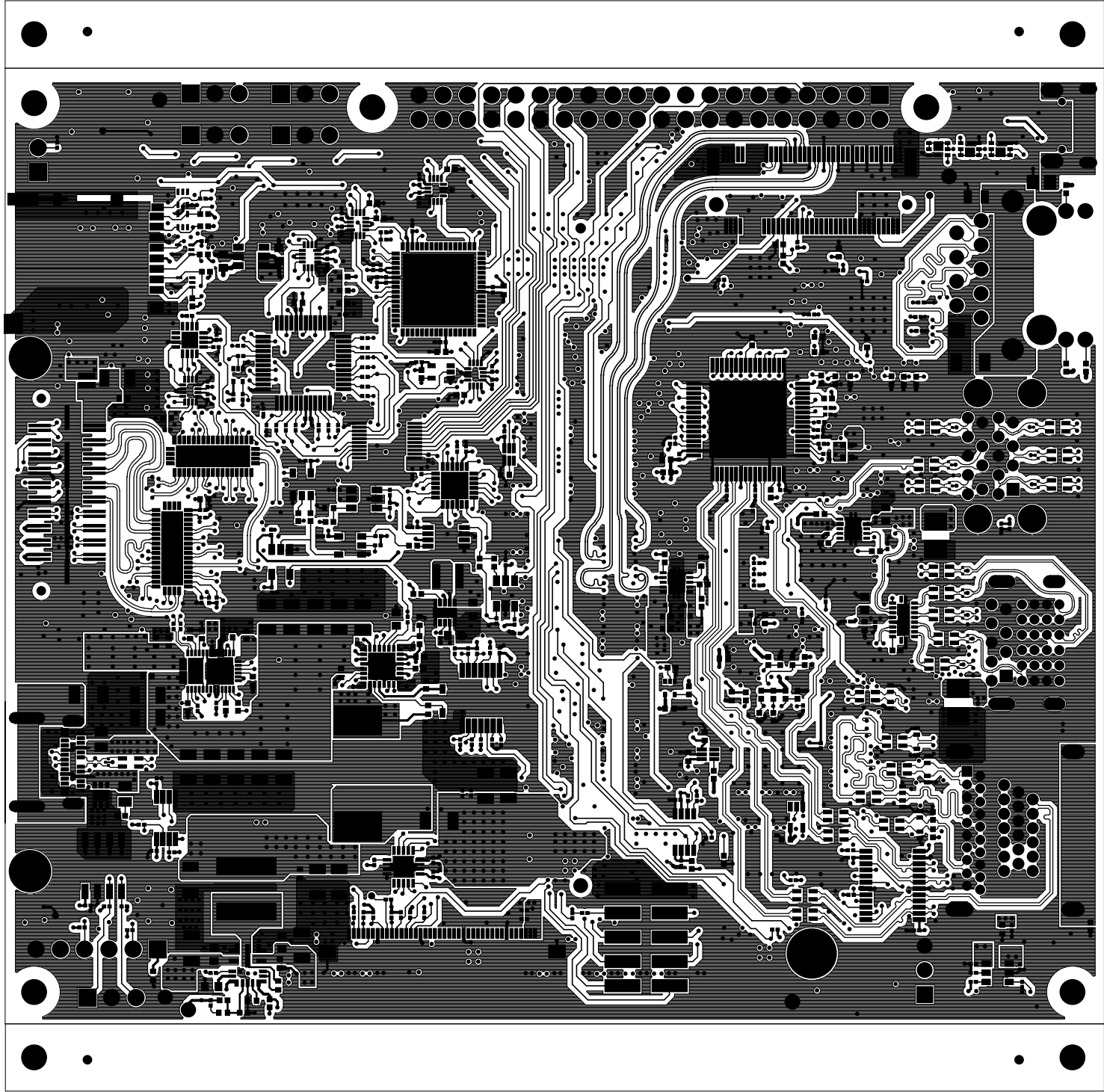
		TEXAS INSTRUMENTS		PROC125E1
BOARD NAME: J7 SK CARRIER BOARD		REV: E1	DESCRIPTION: GROUND-PLANE-04	
SCALE: 1		DATE: 13/09/2022	SHEET 12 OF 19	




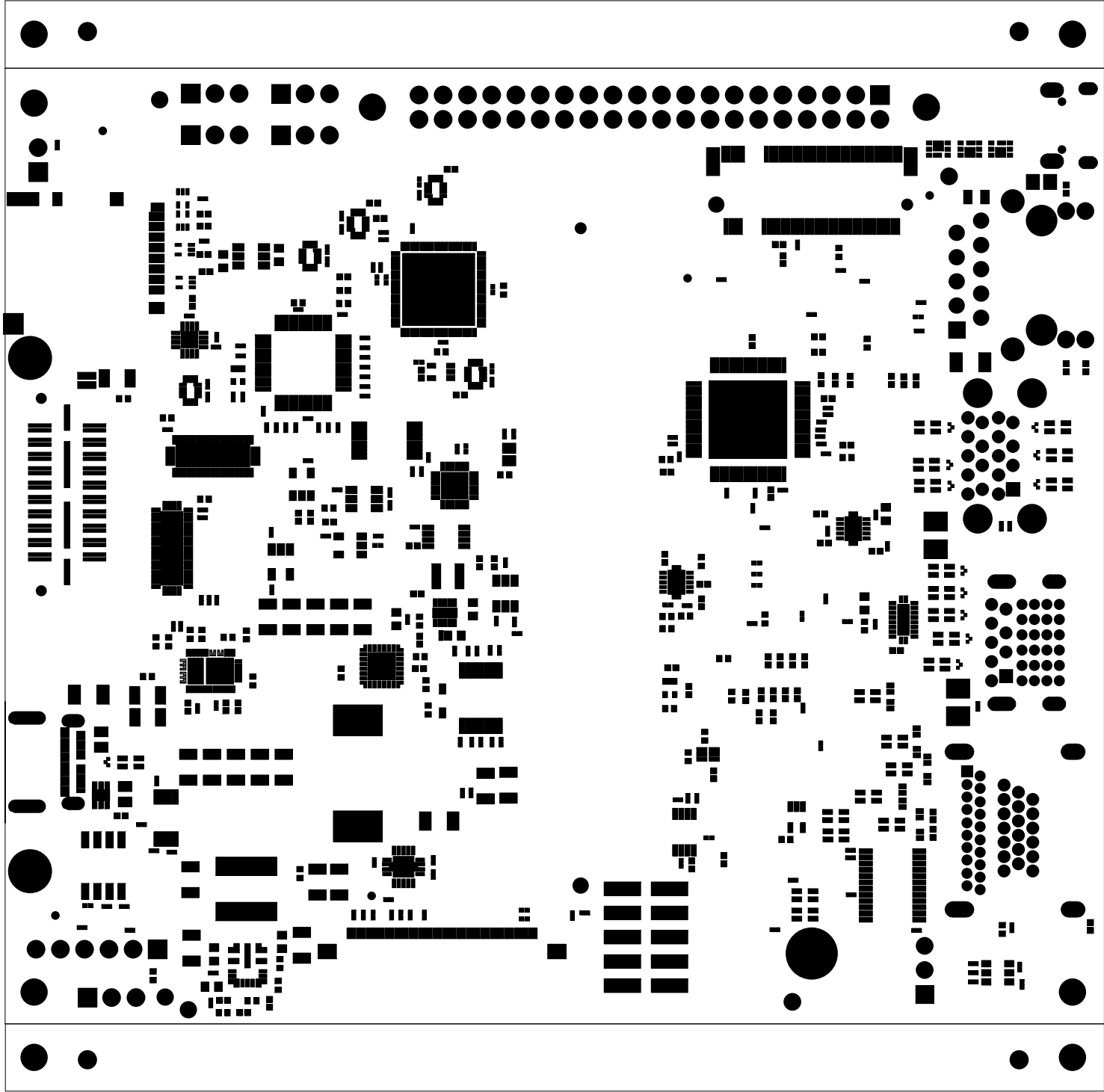
		TEXAS INSTRUMENTS		PROC125E1
BOARD NAME: J7 SK CARRIER BOARD		REV: E1	DESCRIPTION: INNER-SIGNAL-03	
SCALE: 1		DATE: 13/09/2022	SHEET 13 OF 19	




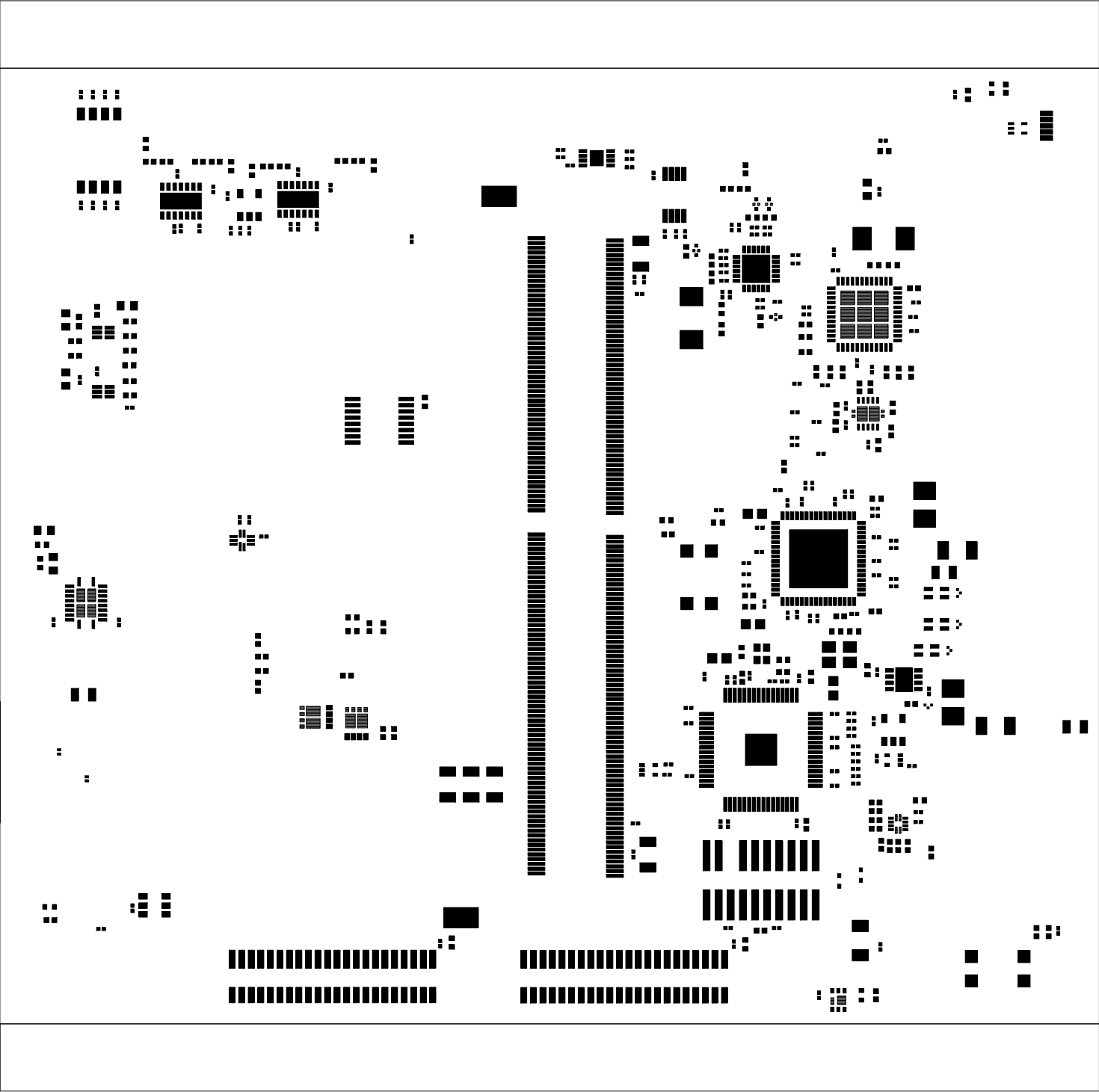
		TEXAS INSTRUMENTS		PROC125E1
BOARD NAME: J7 SK CARRIER BOARD		REV: E1	DESCRIPTION: GROUND-PLANE-05	
SCALE: 1		DATE: 13/09/2022	SHEET 14 OF 19	




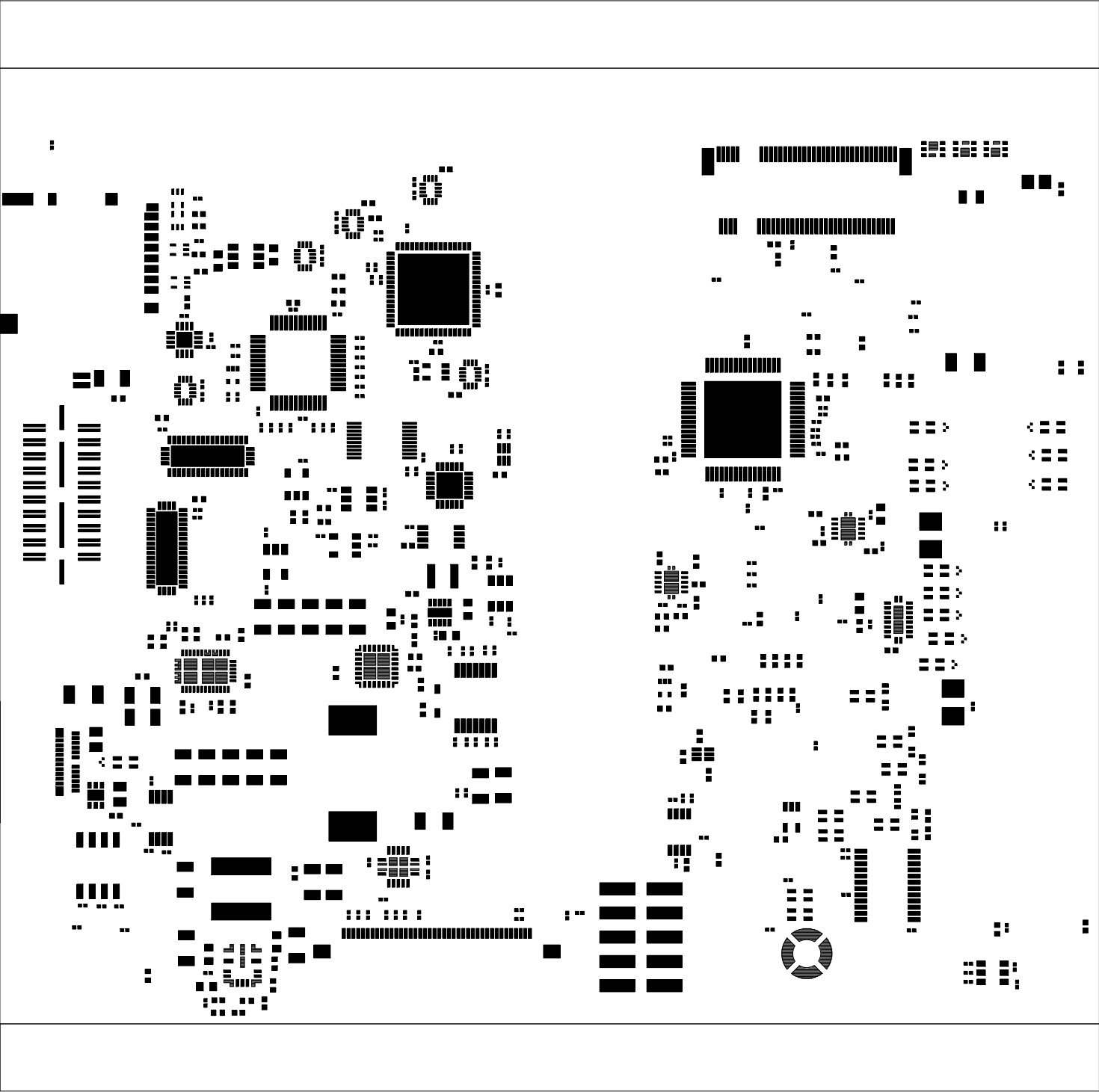
		TEXAS INSTRUMENTS		PROC125E1
BOARD NAME: J7 SK CARRIER BOARD		REV: E1	DESCRIPTION: SECONDARY-SIDE-SIG	
SCALE: 1		DATE: 13/09/2022	SHEET 15 OF 19	




		TEXAS INSTRUMENTS		PROC125E1
BOARD NAME: J7 SK CARRIER BOARD		REV: E1	DESCRIPTION: SECONDARY-SOLDERMASK	
SCALE: 1		DATE: 13/09/2022	SHEET 16 OF 19	



		TEXAS INSTRUMENTS		PROC125E1
BOARD NAME: J7 SK CARRIER BOARD		REV: E1	DESCRIPTION: PRIMARY-PASTEMASK	
SCALE: 1		DATE: 13/09/2022	SHEET 18 OF 19	



		TEXAS INSTRUMENTS		PROC125E1
BOARD NAME: J7 SK CARRIER BOARD		REV: E1	DESCRIPTION: SECONDARY-PASTEMASK	
SCALE: 1		DATE: 13/09/2022	SHEET 19 OF 19	