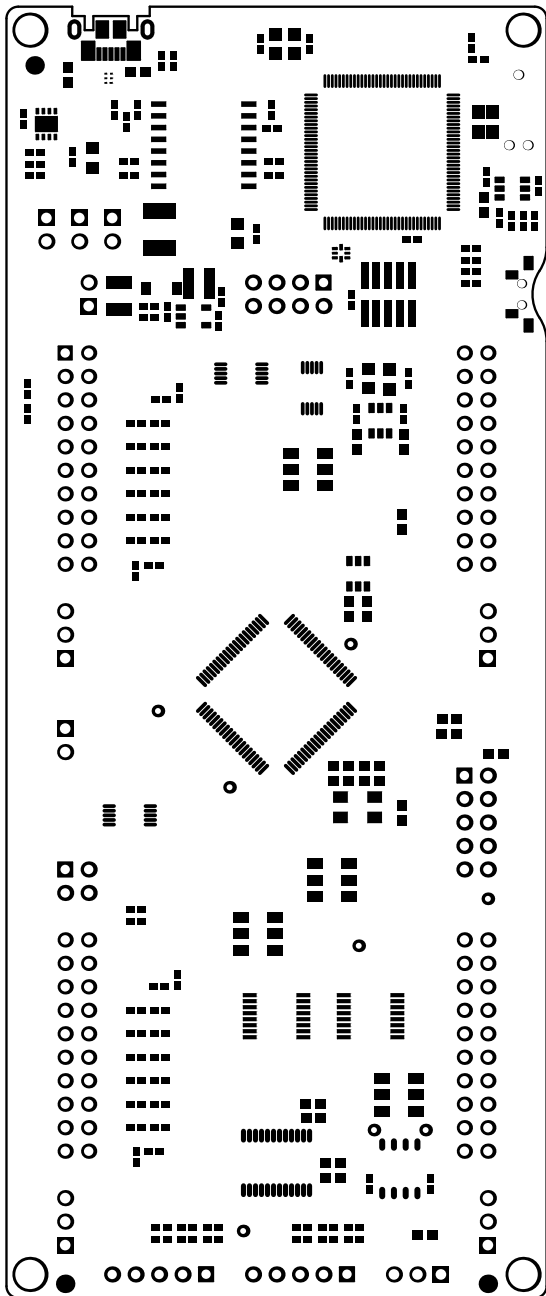
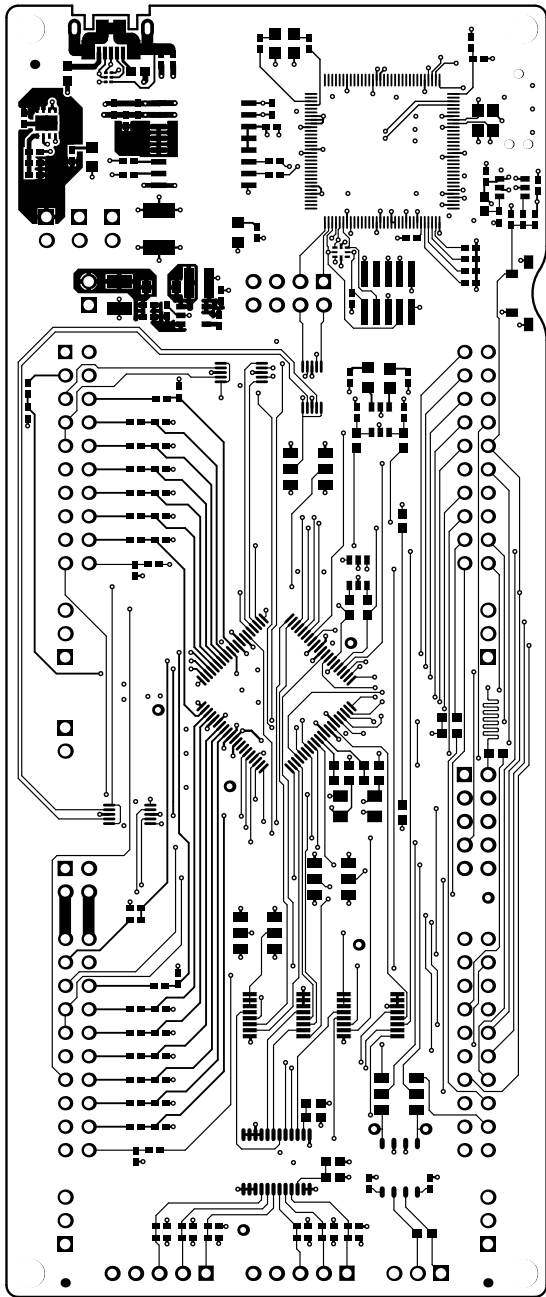


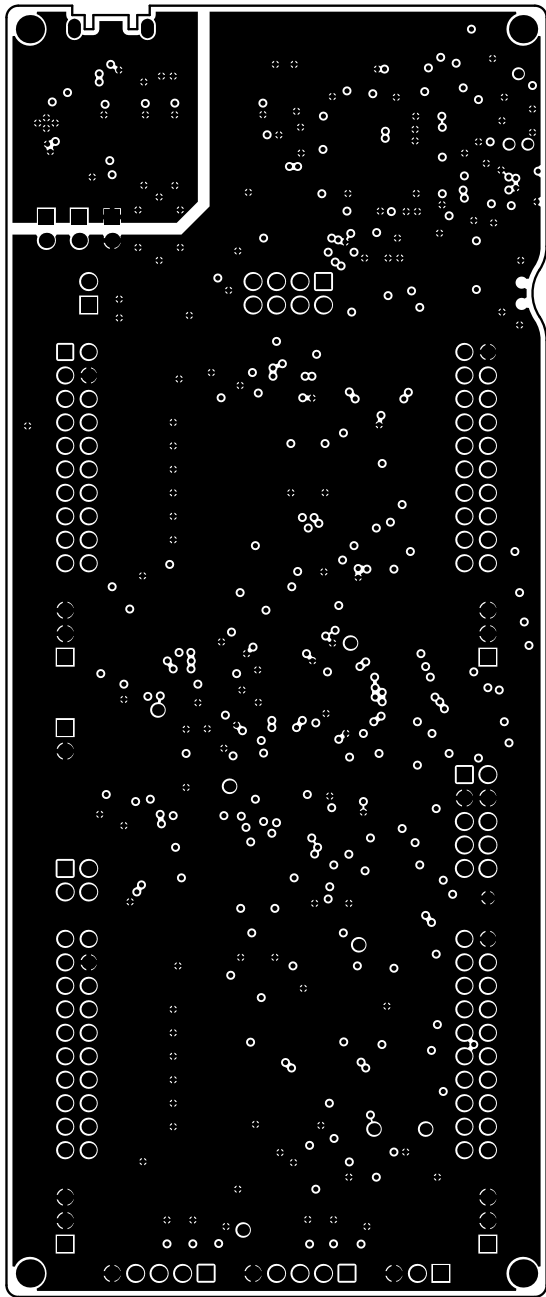
ALL ARTWORK VIEWED FROM TOP SIDE	BOARD #: MCU089	REV: B	SUN REV: Not In VersionControl
LAYER NAME = Top OverlayInformation	TID #: N/A		
PLOT NAME = Top Overlay	GENERATED : 2/3/2022	8:37:53 AM	TEXAS INSTRUMENTS



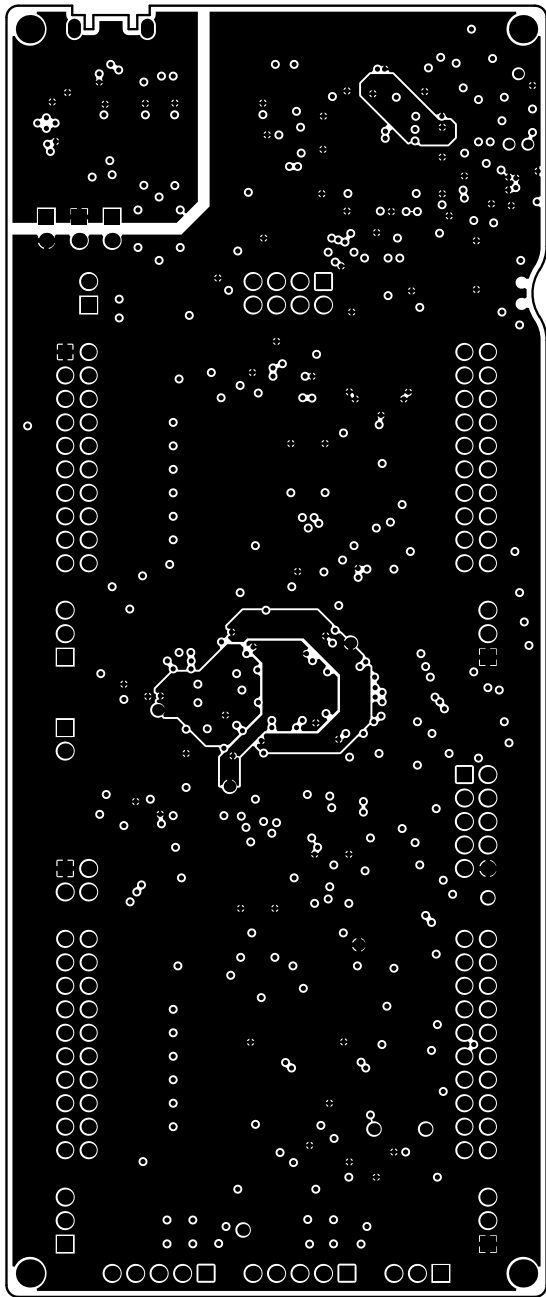
ALL ARTWORK VIEWED FROM TOP SIDE	BOARD #: MCU089	REV: B	SUN REV: Not In VersionControl
LAYER NAME = Top Solder	TID #: N/A		
PLOT NAME = Top Solder Mask	GENERATED : 2/3/2022	8:37:53 AM	TEXAS INSTRUMENTS



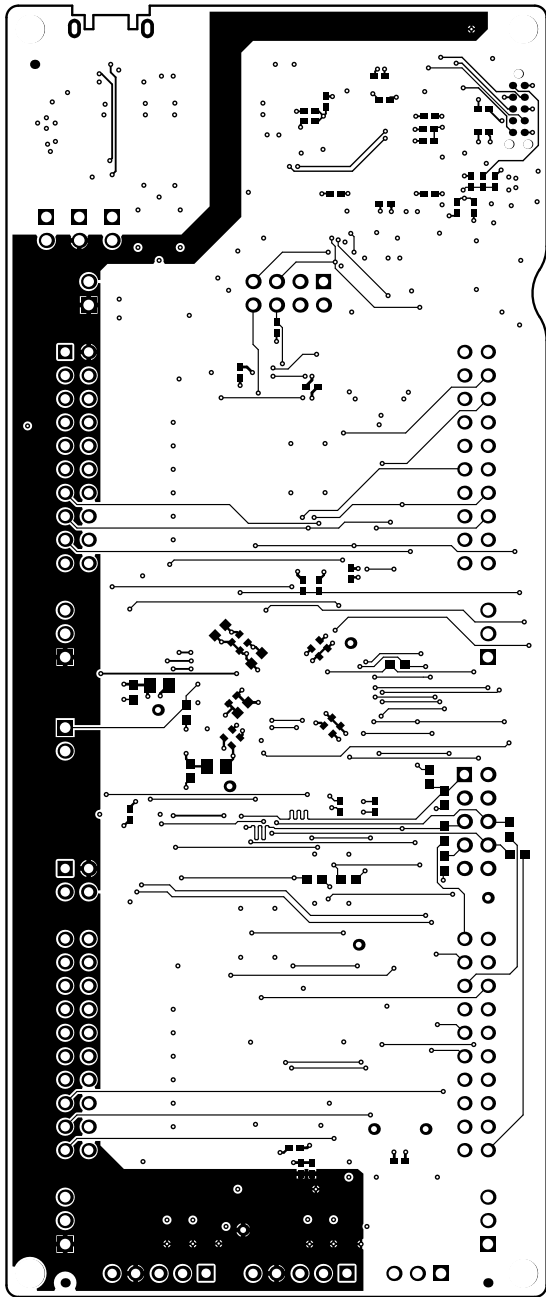
ALL ARTWORK VIEWED FROM TOP SIDE	BOARD #: MCU089	REV: B	SUN REV: Not In VersionControl
LAYER NAME = Top Signal	TID #: N/A		
PLOT NAME = Top Signal	GENERATED : 2/3/2022	8:37:53 AM	TEXAS INSTRUMENTS



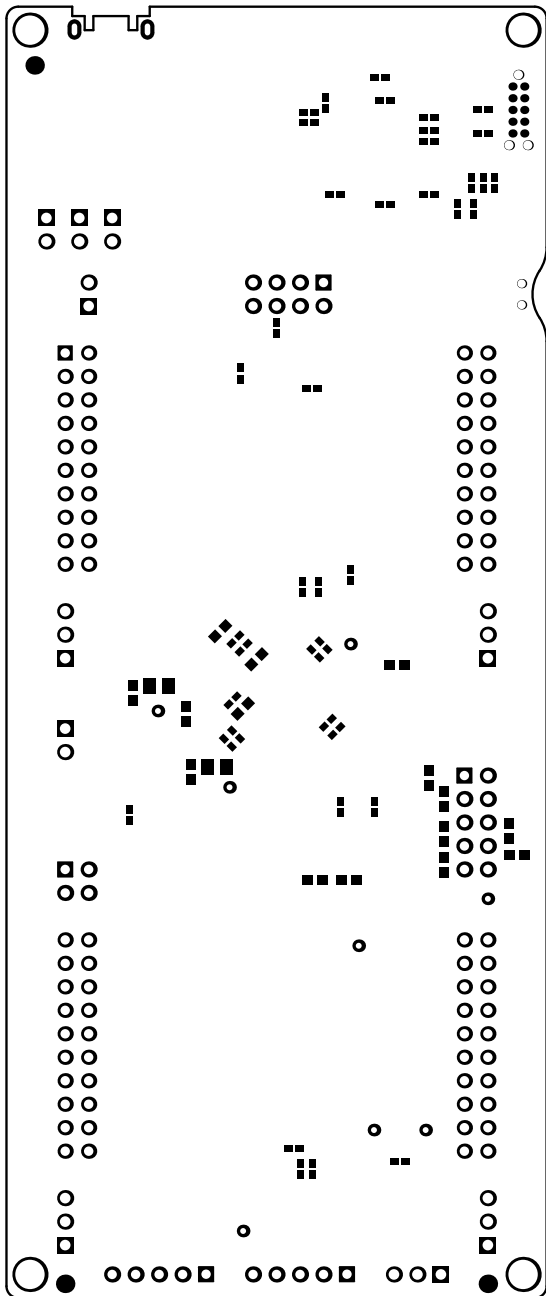
ALL ARTWORK VIEWED FROM TOP SIDE	BOARD #:	MCU089	REV:	B	SUN REV:	Not In VersionControl
LAYER NAME = M11 Gerber Information	TID #:	N/A				
PLOT NAME = GND	GENERATED	: 2/3/2022	8:37:54 AM	TEXAS INSTRUMENTS		



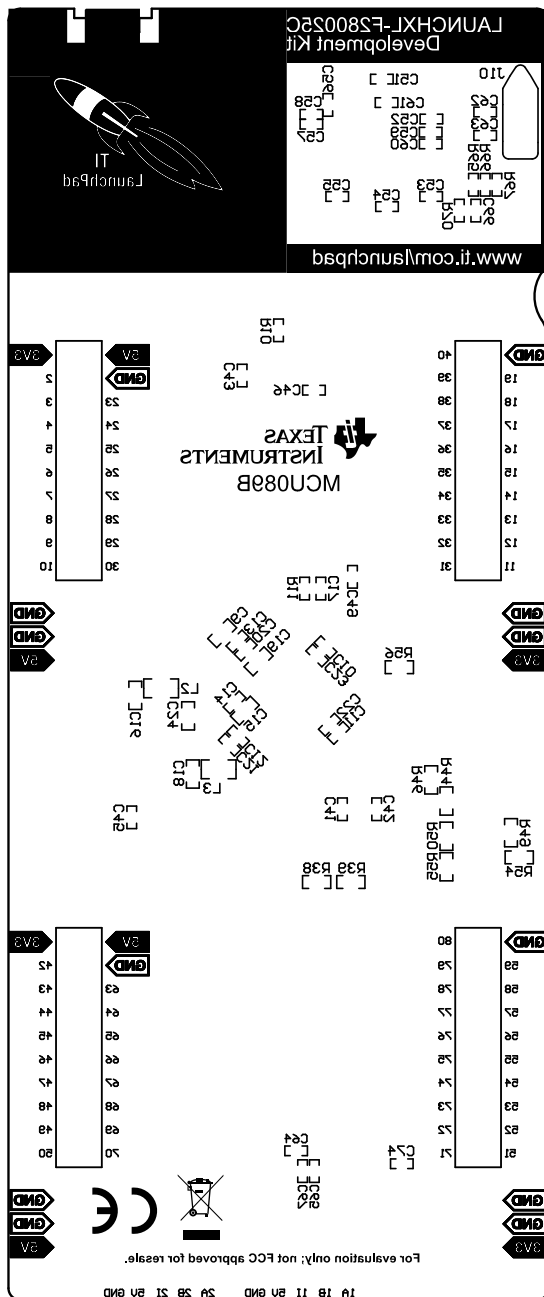
ALL ARTWORK VIEWED FROM TOP SIDE	BOARD #: MCU089	REV: B	SUN REV: Not In VersionControl
LAYER NAME = M11 Gerber Information	TID #: N/A		
PLOT NAME = PWR	GENERATED : 2/3/2022	8:37:54 AM	TEXAS INSTRUMENTS



ALL ARTWORK VIEWED FROM TOP SIDE	BOARD #: MCU089	REV: B	SUN REV: Not In VersionControl
LAYER NAME = Bottom Signal	TID #: N/A		
PLOT NAME = Bottom Signal	GENERATED : 2/3/2022	8:37:54 AM	TEXAS INSTRUMENTS

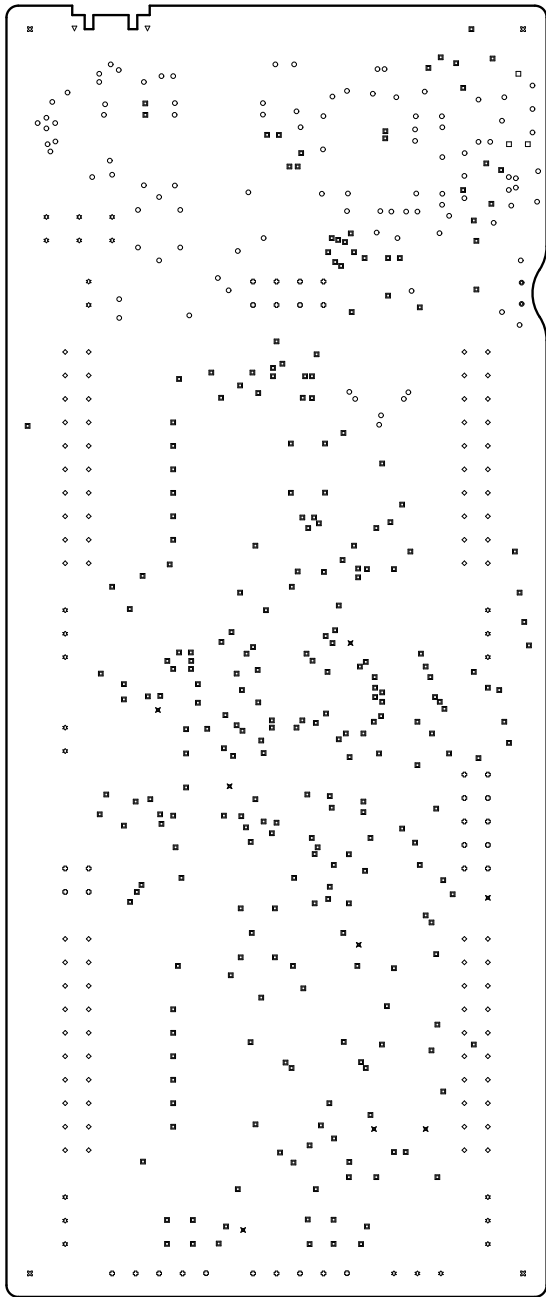












ALL ARTWORK VIEWED FROM TOP SIDE	BOARD #: MCU089	REV: B	SUN REV: Not In VersionControl
LAYER NAME = <del>Bottom Solder Mask</del> Bot Solder Mask	TID #: N/A		
PLOT NAME = Bottom Solder Mask	GENERATED : 2/3/2022	8:37:54 AM	TEXAS INSTRUMENTS



ALL ARTWORK VIEWED FROM TOP SIDE	BOARD #: MCU089	REV: B	SUN REV: Not In VersionControl
LAYER NAME = <del>Bottom Overlay</del> <b>Bottom Overlay</b>	TID #: N/A		
PLOT NAME = Bottom Overlay	GENERATED : 2/3/2022 8:37:54 AM		TEXAS INSTRUMENTS

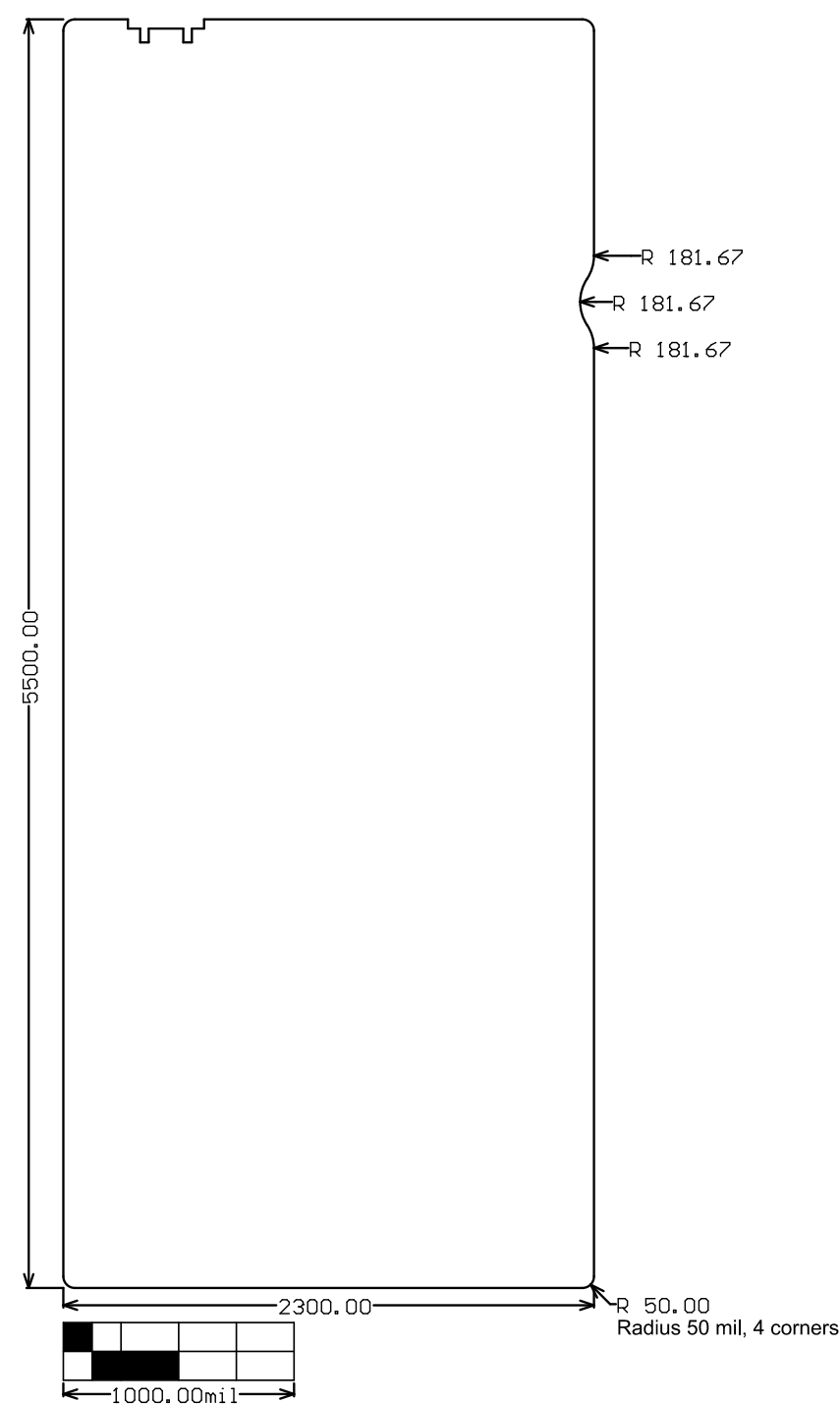




Symbol	Quantity	Finished Hole Size	Plated	Hole Type	Drill Layer Pair	Hole Tolerance
	2	35.43mil (0.900mm)	NPTH	Round	Top Signal - Bottom Signal	+/-5.00mil
	3	39.00mil (0.991mm)	NPTH	Round	Top Signal - Bottom Signal	
	4	125.00mil (3.175mm)	NPTH	Round	Top Signal - Bottom Signal	
	274	10.00mil (0.254mm)	PTH	Round	Top Signal - Bottom Signal	
	103	10.00mil (0.254mm)	PTH	Round	Top Signal - Bottom Signal	
	8	25.00mil (0.635mm)	PTH	Round	Top Signal - Bottom Signal	
	32	40.00mil (1.016mm)	PTH	Round	Top Signal - Bottom Signal	
	80	40.16mil (1.020mm)	PTH	Round	Top Signal - Bottom Signal	
	25	45.28mil (1.150mm)	PTH	Round	Top Signal - Bottom Signal	
	2	23.62mil (0.600mm)	PTH	Slot	Top Signal - Bottom Signal	
	533 Total					

Slot definitions : Routed Path Length = Calculated from tool start centre position to tool end centre position.  
Hole Length = Routed Path Length + Tool Size = Slot length as defined in the PCB layout

ALL ARTWORK VIEWED FROM TOP SIDE	BOARD #: MCU089	REV: B	SUN REV: Not In VersionControl
LAYER NAME = Drill Drawing	TID #: N/A		
PLOT NAME = Drill Drawing	GENERATED : 2/3/2022	8:37:55 AM	TEXAS INSTRUMENTS



ALL ARTWORK VIEWED FROM TOP SIDE	BOARD #:	MCU089	REV:	B	SUN REV:	Not In VersionControl
LAYER NAME = M21 Board Dimensions	TID #:	N/A				
PLOT NAME = Board Dimensions	GENERATED	: 2/3/2022	8:37:56 AM	TEXAS INSTRUMENTS		