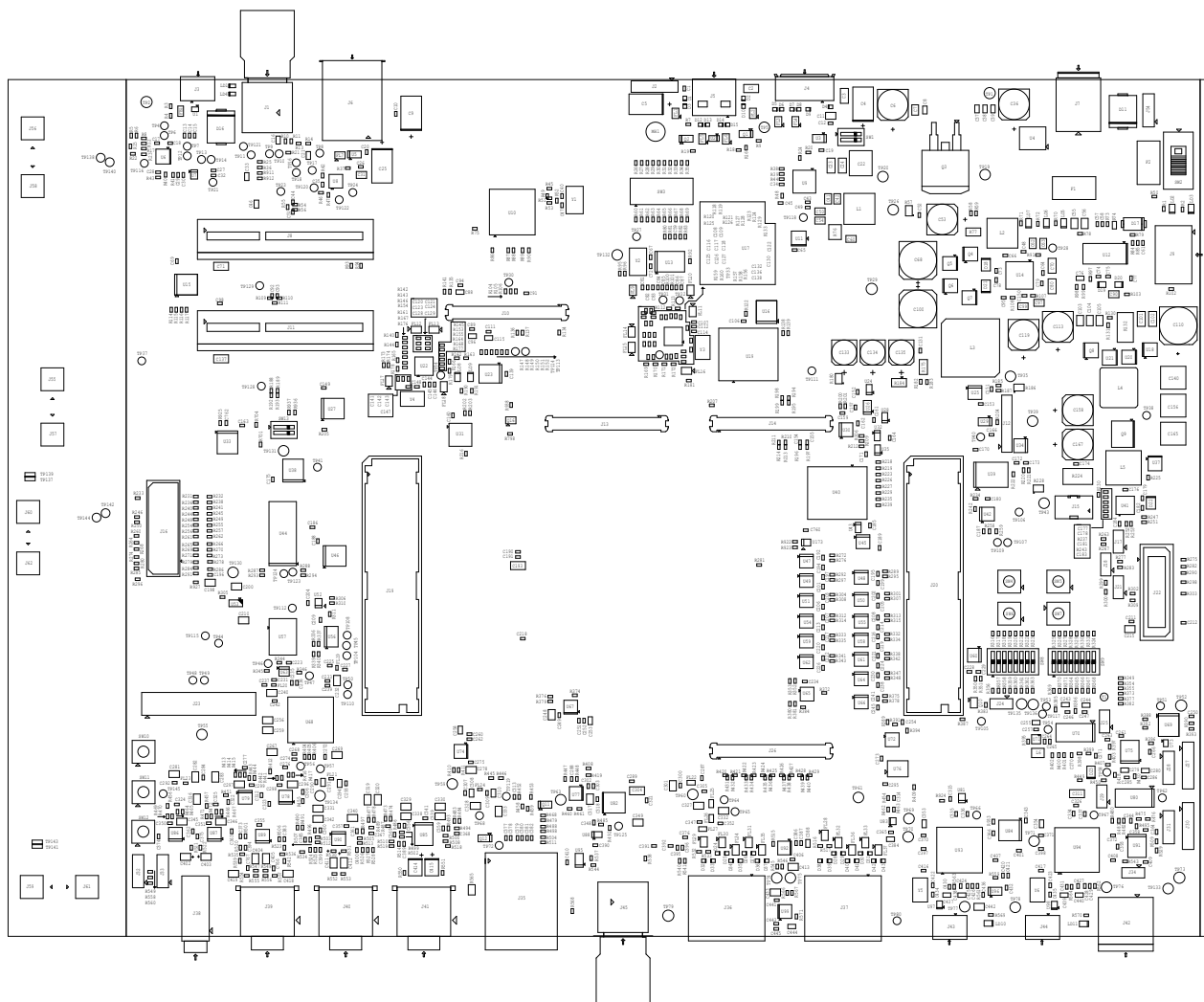



ASSEMBLY NOTES:-

- 1 - All MSL components should be baked as per JEDEC standard.
- 2 - PCB should be baked at 120 degree for 8 hours.
- 3 - Board assembly must comply with workmanship standards IPC-A-610 Class 2, unless otherwise specified.
- 4 - These assemblies are ESD sensitive, ESD precautions shall be observed.
- 5 - These assemblies must be clean and free from flux and all contaminants. Use of no clean flux is not acceptable.
- 6 - Provide serial numbers to the assembled boards for identification.
- 7 - The assembled board are wrapped in ESD Covers(individual) and packed securely before shipment.



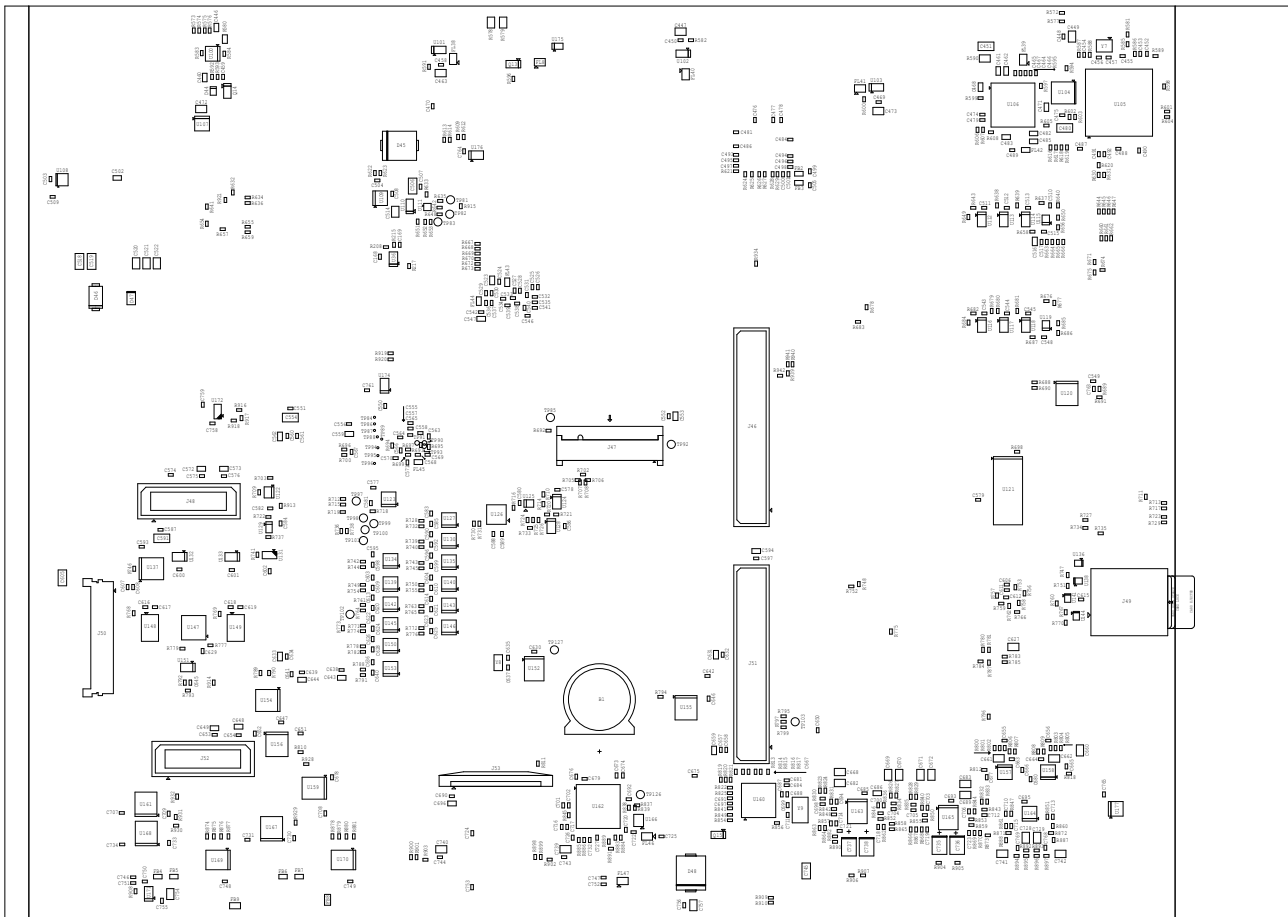
		TEXAS INSTRUMENTS		PROC079
BOARD NAME: J7X COMMON PROCESSOR BRD		REV: E3	DESCRIPTION: PRIMARY-SIDE-Assembly	
SCALE: 1		DATE: 07/06/2019	SHEET 1 of 2	


PROC079 E3 ASSEMBLY BOTTOM

ASSEMBLY NOTES:-

- 1 - All MSL components should be baked as per JEDEC standard.
- 2 - PCB should be baked at 120 degree for 8 hours.
- 3 - Board assembly must comply with workmanship standards IPC-A-610 Class 2, unless otherwise specified.
- 4 - These assemblies are ESD sensitive, ESD precautions shall be observed.
- 5 - These assemblies must be clean and free from flux and all contaminants. Use of no clean flux is not acceptable.
- 6 - Provide serial numbers to the assembled boards for identification.
- 7 - The assembled board are wrapped in ESD Covers(individual) and packed securely before shipment.

PROC079 BOTTOM ASSEMBLY REV.E3



		TEXAS INSTRUMENTS		PROC079
BOARD NAME: J7X COMMON PROCESSOR BRD		REV: E3	DESCRIPTION: SECONDARY-SIDE-Assembly	
SCALE: 1		DATE: 07/06/2019	SHEET 2 OF2	