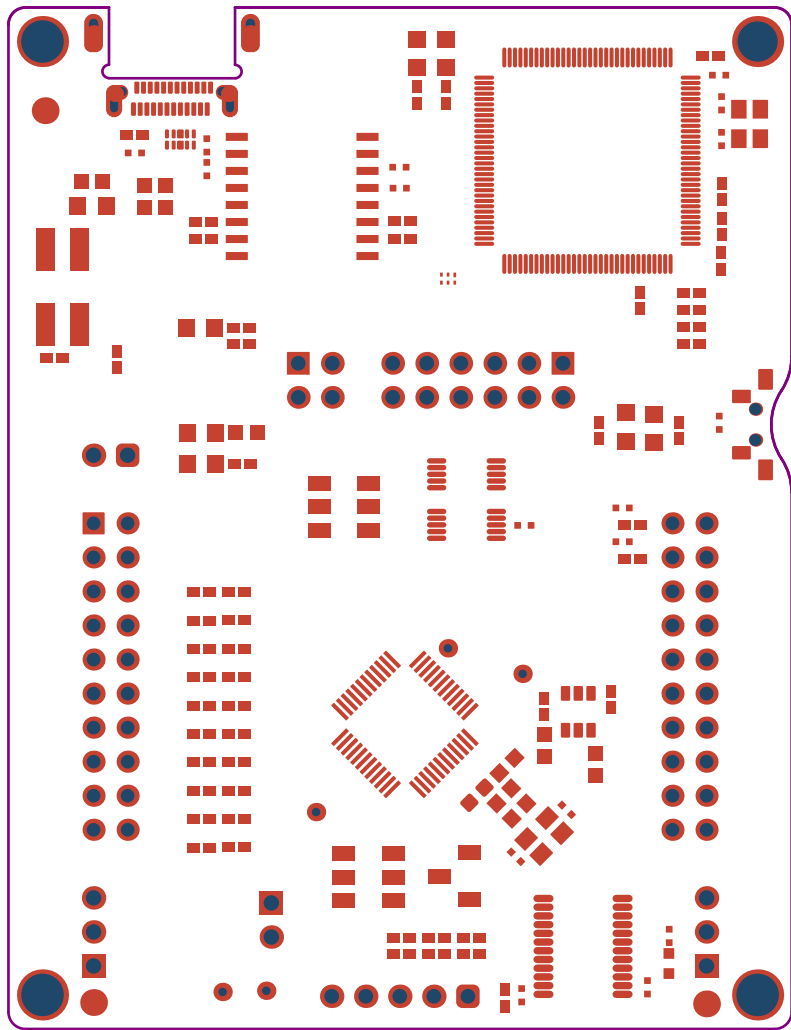
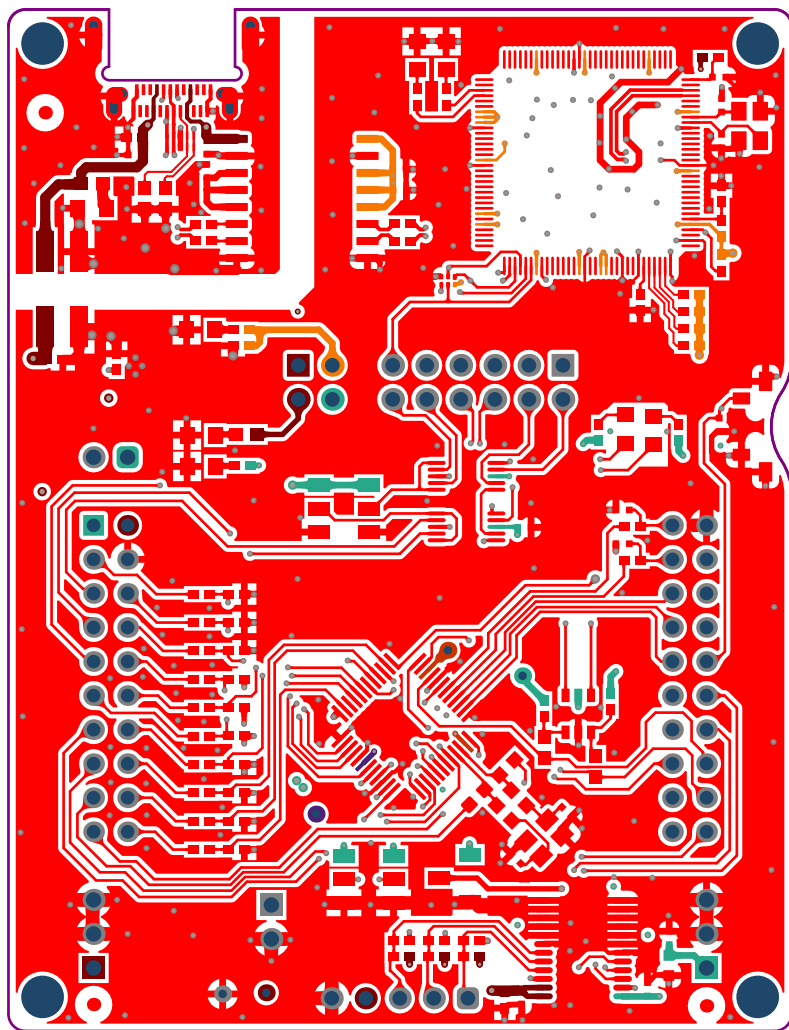


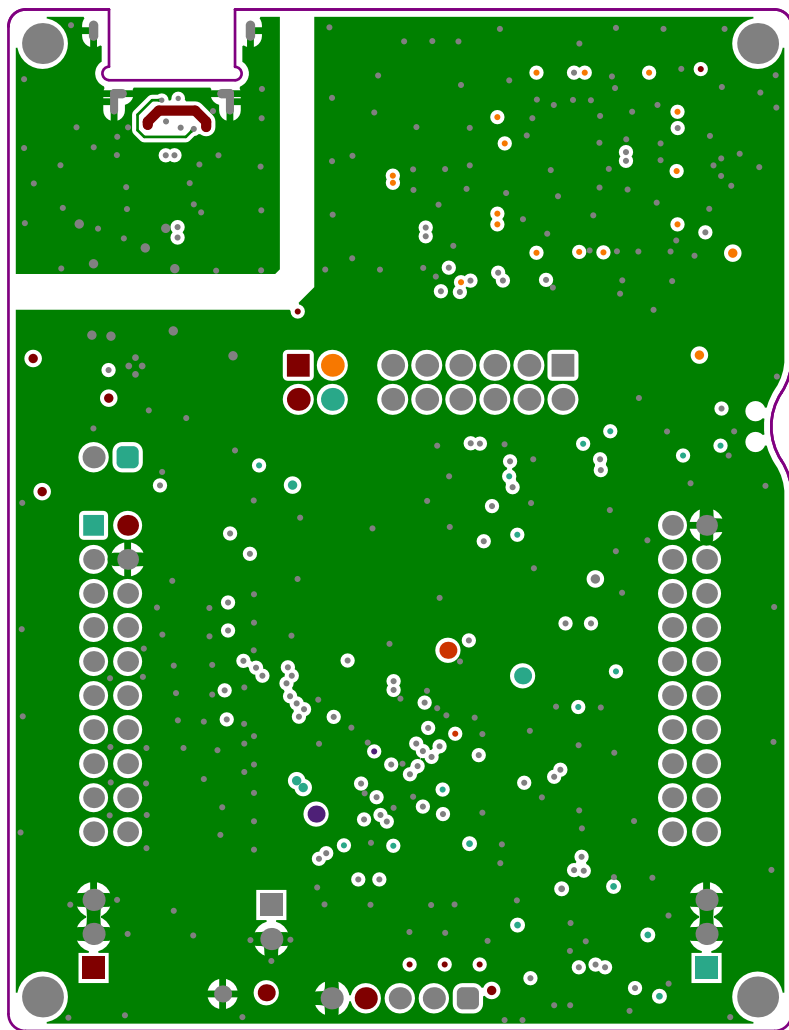
ALL ARTWORK VIEWED FROM TOP SIDE	BOARD #: MCU152	REV: A	SVN REV: Not in version control
LAYER NAME = Top Overlay	TID #: .TID		
PLOT NAME = Top Overlay	GENERATED : 7/21/2025 4:32:26 PM		TEXAS INSTRUMENTS



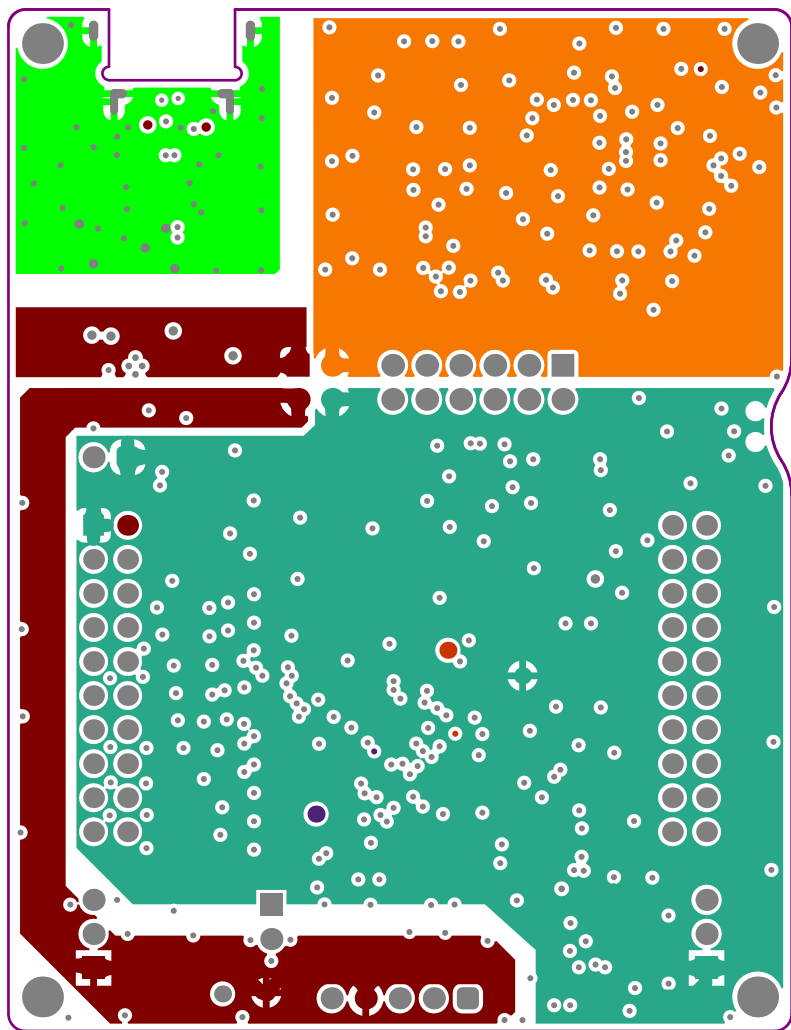
ALL ARTWORK VIEWED FROM TOP SIDE	BOARD #: MCU152	REV: A	SVN REV: Not in version control
LAYER NAME = Top Solder Information	TID #: .TID		
PLOT NAME = Top Solder Mask	GENERATED : 7/21/2025 4:32:26 PM		TEXAS INSTRUMENTS



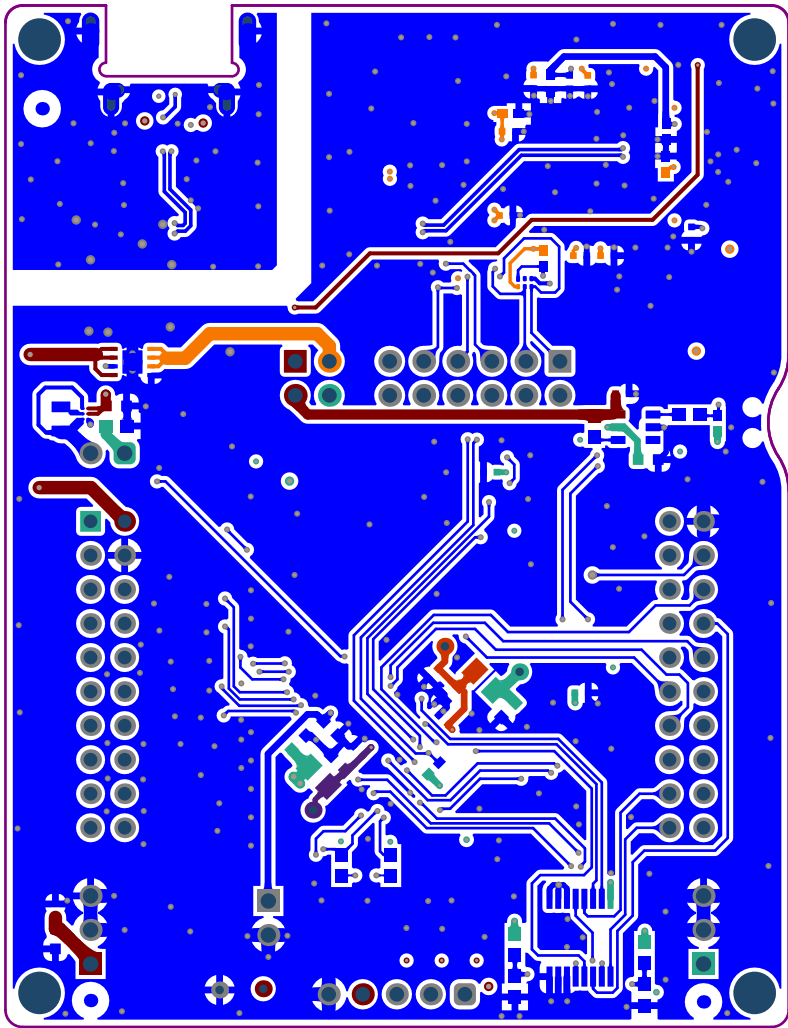
ALL ARTWORK VIEWED FROM TOP SIDE	BOARD #: MCU152	REV: A	SVN REV: Not in version control
LAYER NAME = M11 Top Signal	TID #: .TID		
PLOT NAME = Top Signal	GENERATED : 7/21/2025 4:32:26 PM		TEXAS INSTRUMENTS



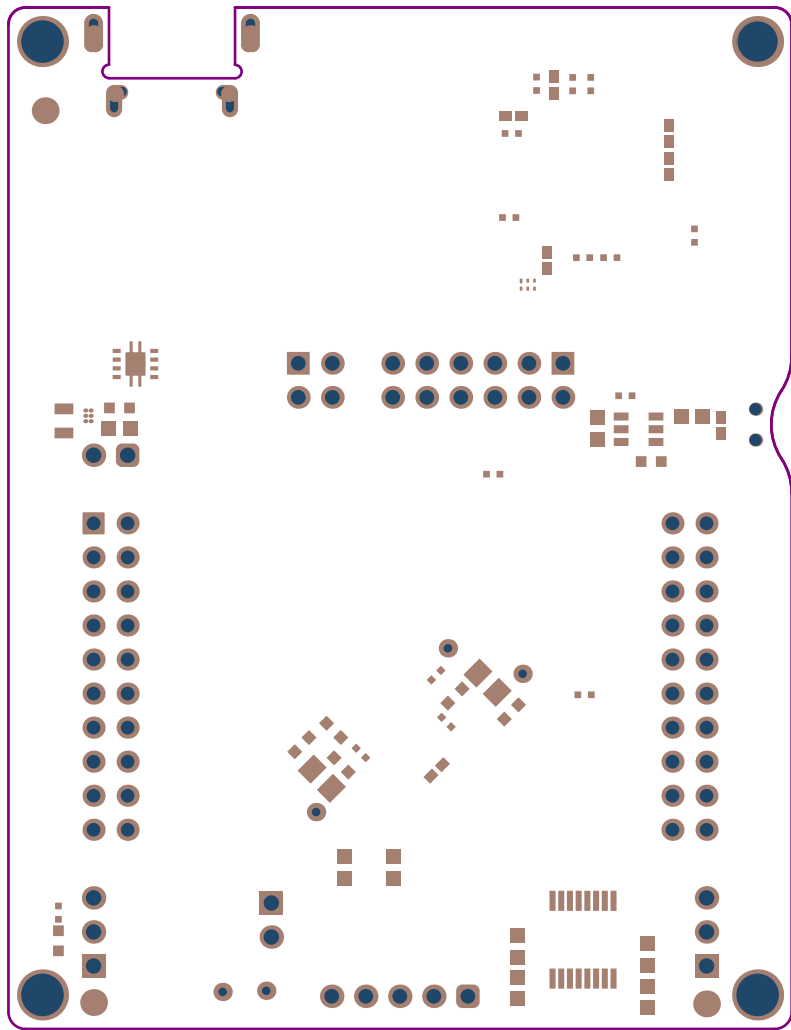
ALL ARTWORK VIEWED FROM TOP SIDE	BOARD #: MCU152	REV: A	SVN REV: Not in version control
LAYER NAME = M11 Gerber Information	TID #: .TID		
PLOT NAME = GND	GENERATED : 7/21/2025 4:32:26 PM		TEXAS INSTRUMENTS



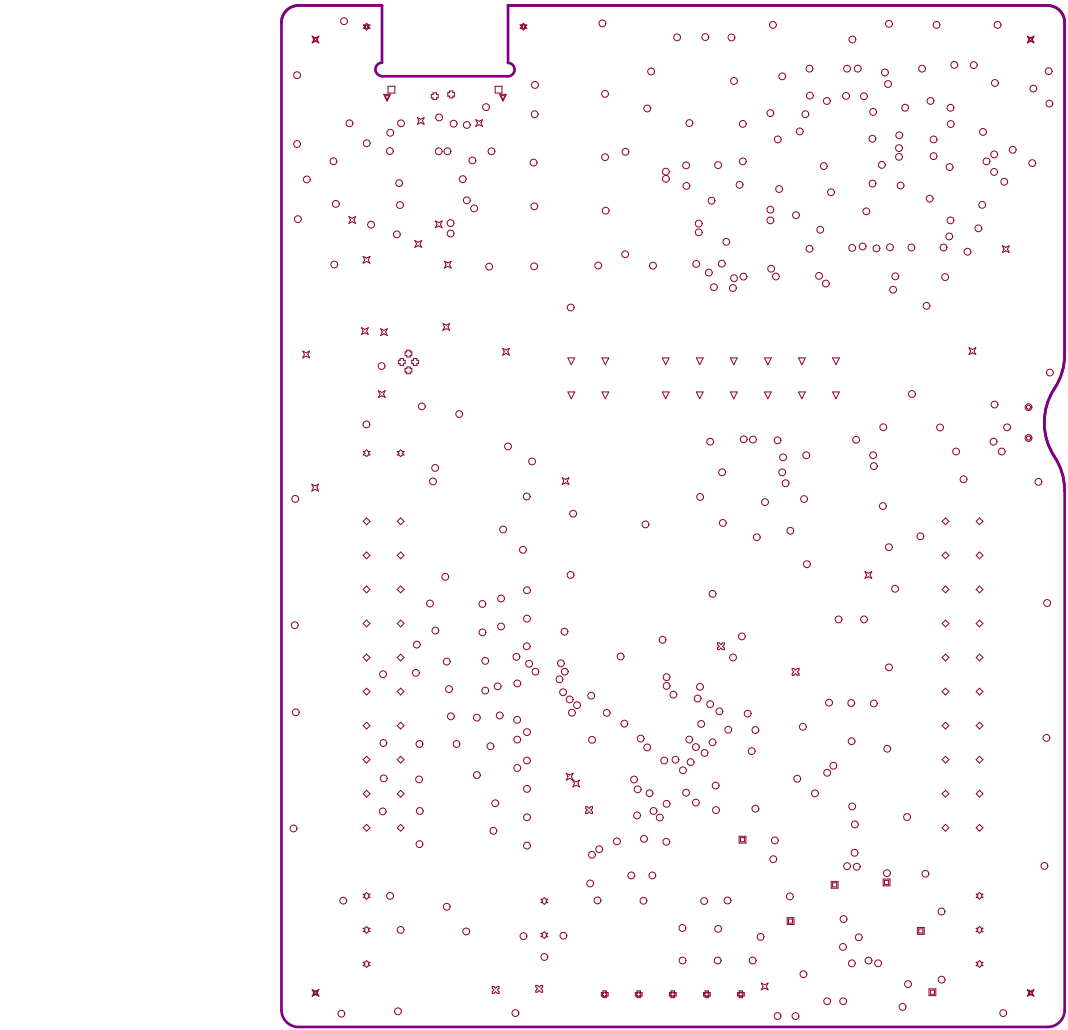
ALL ARTWORK VIEWED FROM TOP SIDE	BOARD #: MCU152	REV: A	SVN REV: Not in version control
LAYER NAME = M11 Gerber Information	TID #: .TID		
PLOT NAME = PWR	GENERATED : 7/21/2025 4:32:26 PM		TEXAS INSTRUMENTS



ALL ARTWORK VIEWED FROM TOP SIDE	BOARD #: MCU152	REV: A	SVN REV: Not in version control
LAYER NAME = M1Bottom Signal	TID #: .TID		
PLOT NAME = Bottom Signal	GENERATED : 7/21/2025 4:32:26 PM		TEXAS INSTRUMENTS



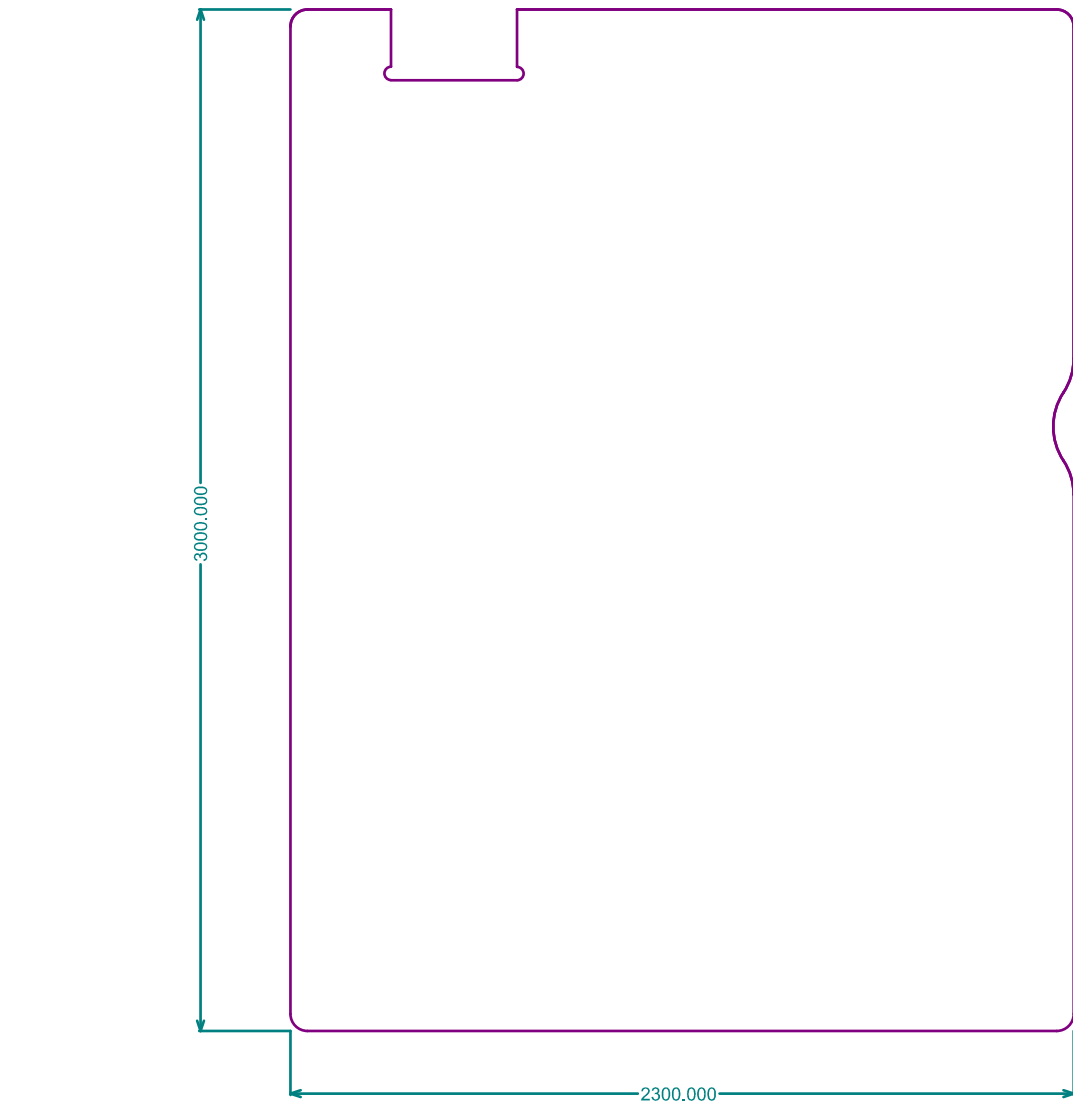
ALL ARTWORK VIEWED FROM TOP SIDE	BOARD #: MCU152	REV: A	SVN REV: Not in version control
LAYER NAME = Bottom Solder Mask	TID #: .TID		
PLOT NAME = Bottom Solder Mask	GENERATED : 7/21/2025 4:32:26 PM		TEXAS INSTRUMENTS



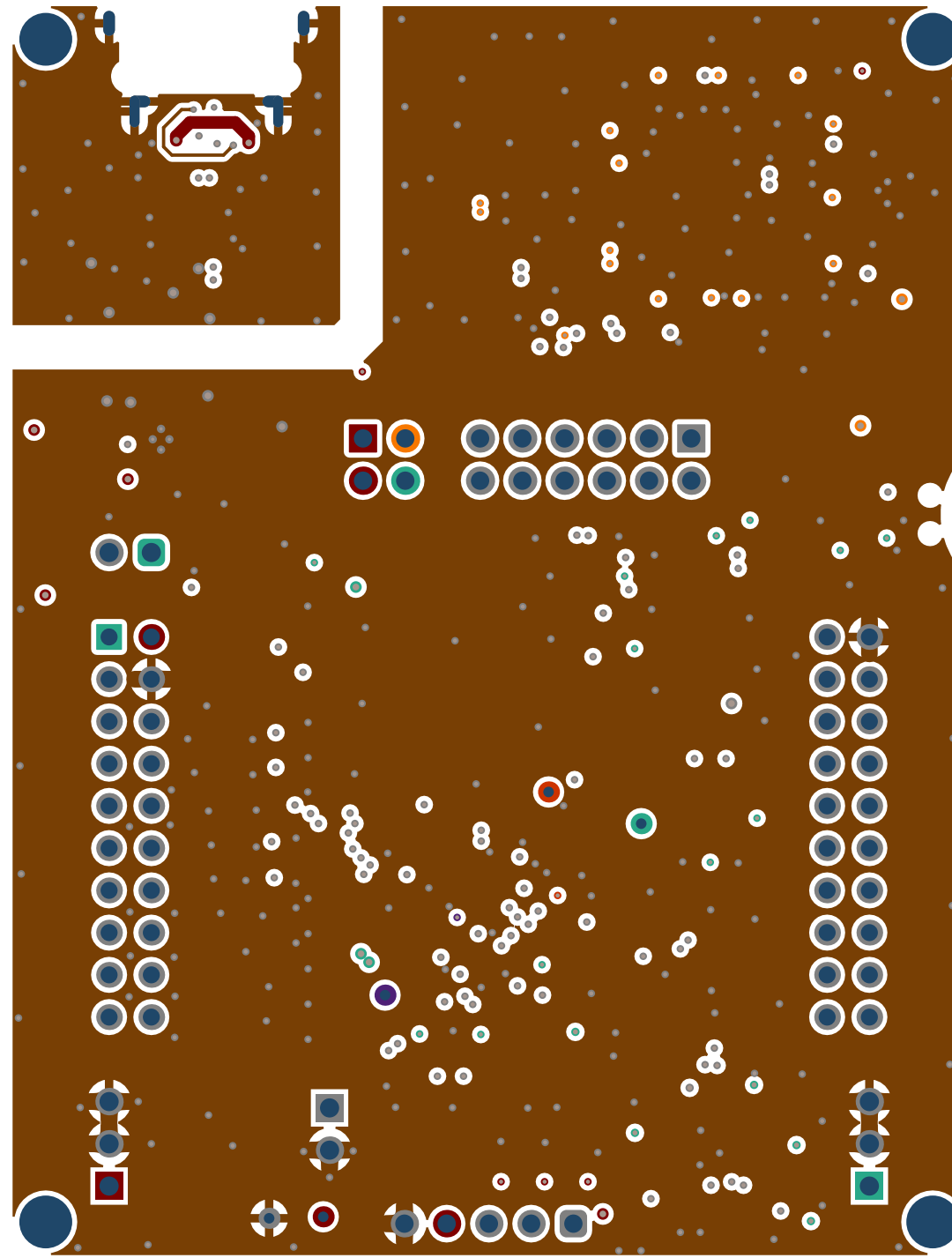
Symbol	Count	Finished Hole Size	Plated	Hole Type	Drill Layer Pair	Hole Tolerance (+)
⊕	6	7.87mil (0.200mm)	PTH	Round	Top Signal - Bottom Signal	1.97mil (0.050mm)
○	368	9.84mil (0.250mm)	PTH	Round	Top Signal - Bottom Signal	
⊞	6	11.81mil (0.300mm)	PTH	Round	Top Signal - Bottom Signal	
✕	21	15.75mil (0.400mm)	PTH	Round	Top Signal - Bottom Signal	
⊗	5	25.00mil (0.635mm)	PTH	Round	Top Signal - Bottom Signal	
□	2	27.56mil (0.700mm)	PTH	Slot	Top Signal - Bottom Signal	
⦿	2	35.43mil (0.900mm)	NPTH	Round	Top Signal - Bottom Signal	
◇	40	40.16mil (1.020mm)	PTH	Round	Top Signal - Bottom Signal	
⊕	5	43.31mil (1.100mm)	PTH	Round	Top Signal - Bottom Signal	
▽	16	43.31mil (1.100mm)	PTH	Round	Top Signal - Bottom Signal	
☆	10	45.28mil (1.150mm)	PTH	Round	Top Signal - Bottom Signal	
⬠	2	59.06mil (1.500mm)	PTH	Slot	Top Signal - Bottom Signal	
▽	2	74.80mil (1.900mm)	PTH	Slot	Top Signal - Bottom Signal	
✕	4	125.00mil (3.175mm)	NPTH	Round	Top Signal - Bottom Signal	
	489 Total					

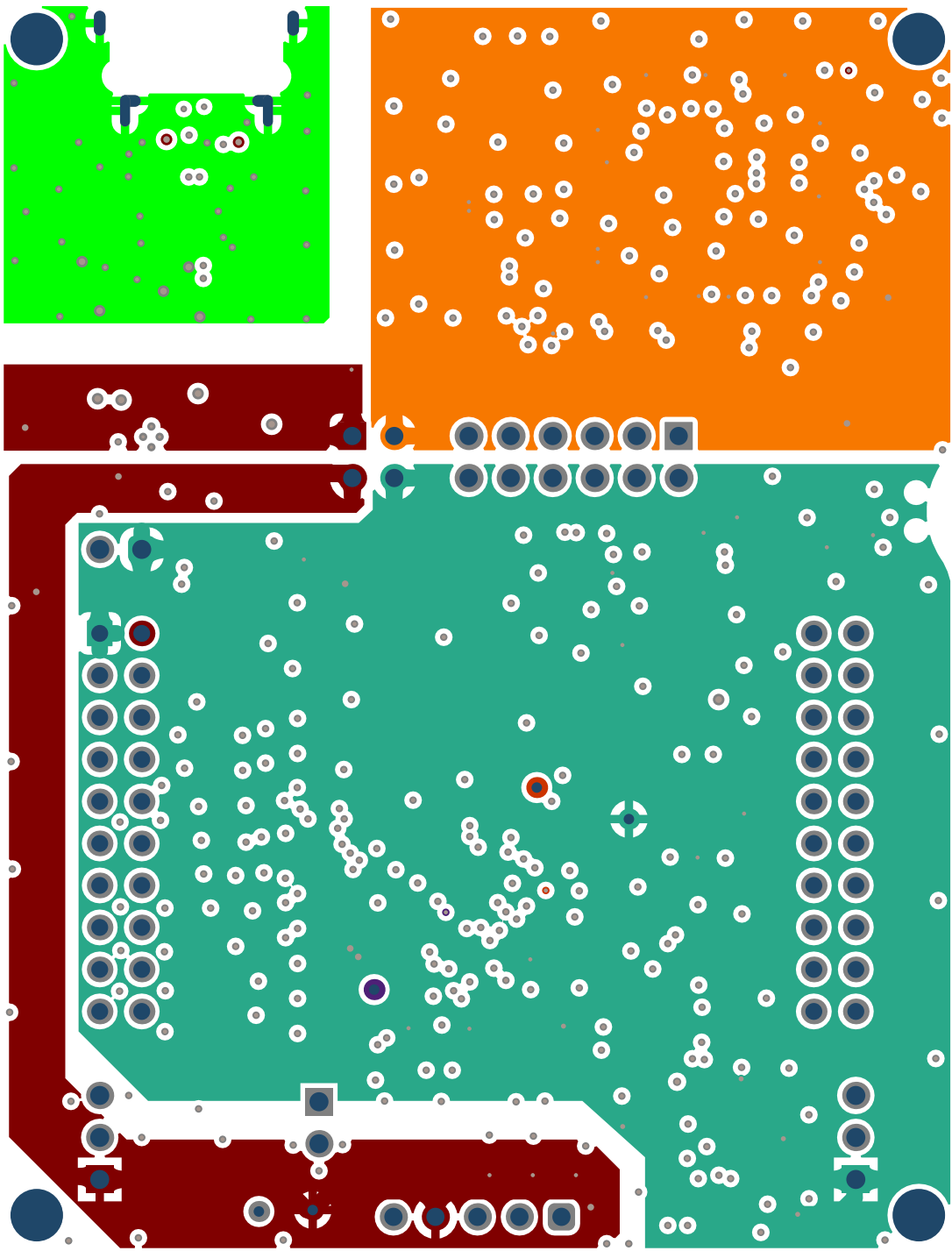
Slot definitions : Routed Path Length = Calculated from tool start centre position to tool end centre position.
Hole Length = Routed Path Length + Tool Size = Slot length as defined in the PCB layout

ALL ARTWORK VIEWED FROM TOP SIDE	BOARD #: MCU152	REV: A	SVN REV: Not in version control
LAYER NAME = Drill Drawing	TID #: .TID		
PLOT NAME = Drill Drawing	GENERATED : 7/21/2025 4:32:27 PM		TEXAS INSTRUMENTS

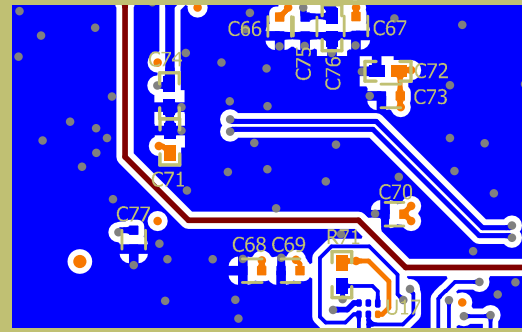


ALL ARTWORK VIEWED FROM TOP SIDE	BOARD #: MCU152	REV: A	SVN REV: Not in version control
LAYER NAME = M12 Gerber Dimensions	TID #: .TID		
PLOT NAME = Board Dimensions	GENERATED : 7/21/2025 4:32:27 PM		TEXAS INSTRUMENTS





LAUNCHXL-F28E12X
Development Kit



www.ti.com/launchpad

