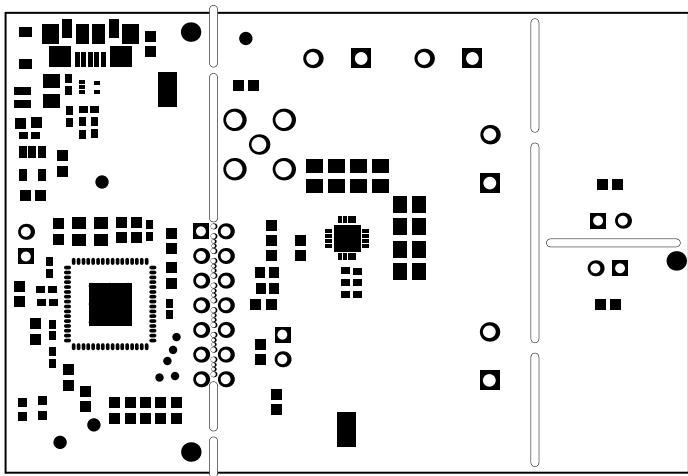
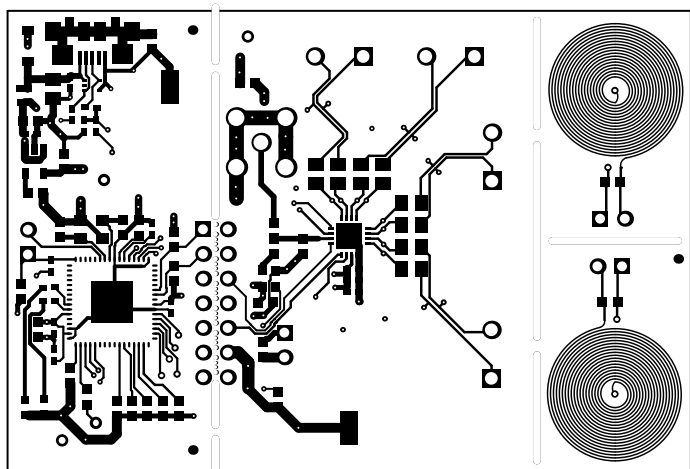


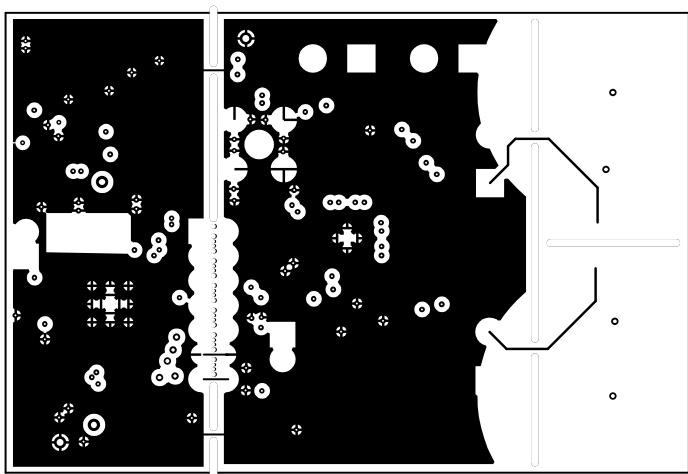
ALL ARTWORK VIEWED FROM TOP SIDE	BOARD #: SU601126	REV: B	SUN REV: Not In VersionControl
LAYER NAME = Top Overlay			
PLOT NAME = Top Overlay	GENERATED : 3/5/2015 5:50:19 PM		TEXAS INSTRUMENTS



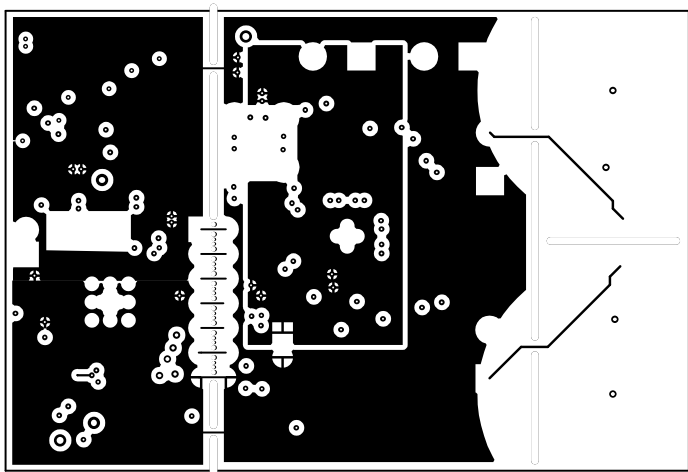
ALL ARTWORK VIEWED FROM TOP SIDE	BOARD #: SU601126	REV: B	SUN REV: Not In VersionControl
LAYER NAME = Top Solder			
PLOT NAME = Top Solder Mask	GENERATED : 3/5/2015 5:50:20 PM	TEXAS INSTRUMENTS	



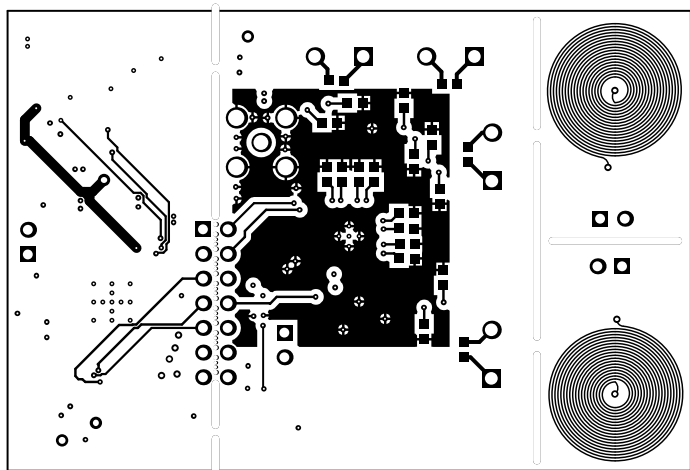
ALL ARTWORK VIEWED FROM TOP SIDE	BOARD #: SU601126	REV: B	SUN REV: Not In VersionControl
LAYER NAME = Top Layer			
PLOT NAME = Top Layer	GENERATED : 3/5/2015 5:50:20 PM	TEXAS INSTRUMENTS	



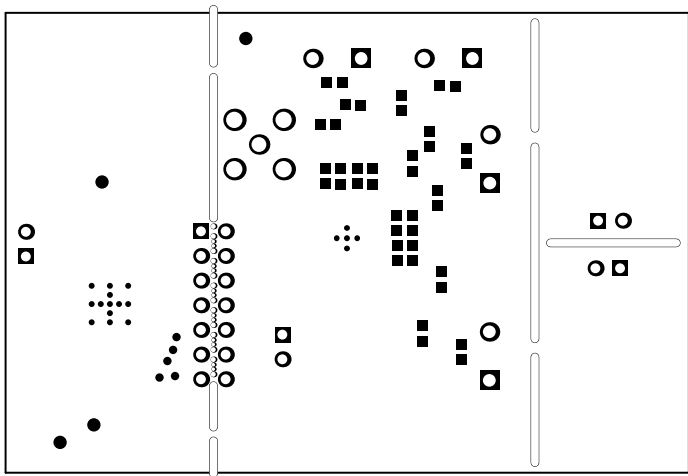
ALL ARTWORK VIEWED FROM TOP SIDE	BOARD #: SU601126	REV: B	SUN REV: Not In VersionControl
LAYER NAME = M1 Board Outline			
PLOT NAME = MidLayer1	GENERATED : 3/5/2015 5:50:21 PM	TEXAS INSTRUMENTS	



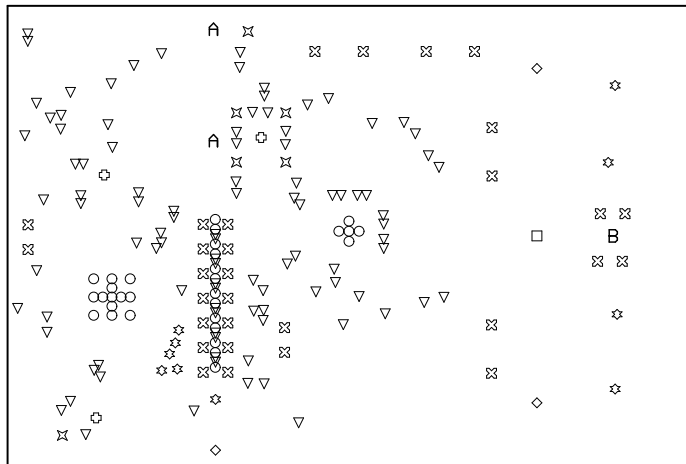
ALL ARTWORK VIEWED FROM TOP SIDE	BOARD #: SU601126	REV: B	SUN REV: Not In VersionControl
LAYER NAME = M1 Board Outline			
PLOT NAME = MidLayer2	GENERATED : 3/5/2015 5:50:21 PM	TEXAS INSTRUMENTS	



ALL ARTWORK VIEWED FROM TOP SIDE	BOARD #: SU601126	REV: B	SUN REV: Not In VersionControl
LAYER NAME = Bottom Layer			
PLOT NAME = Bottom Layer	GENERATED : 3/5/2015 5:50:22 PM	TEXAS INSTRUMENTS	



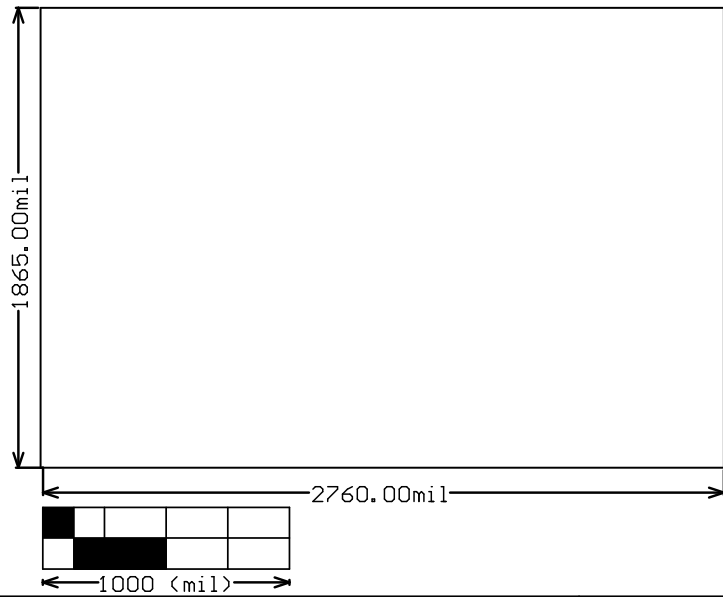
ALL ARTWORK VIEWED FROM TOP SIDE	BOARD #: SU601126	REV: B	SUN REV: Not In VersionControl
LAYER NAME = Bottom Solder			
PLOT NAME = Bottom Solder Mask	GENERATED : 3/5/2015 5:50:23 PM	TEXAS INSTRUMENTS	



Symbol	Hit Count	Tool Size	Physical Length	Rout Path Length	Plated	Hole Type
○	18	7.874mil (0.2mm)			PTH	Round
▽	87	8mil (0.203mm)			PTH	Round
▽	12	14mil (0.356mm)			NPTH	Round
☆	9	15mil (0.381mm)			PTH	Round
○	13	20mil (0.508mm)			NPTH	Round
⊗	2	25mil (0.635mm)			PTH	Round
⊗	2	28mil (0.711mm)			PTH	Round
⊗	22	40mil (1.016mm)			PTH	Round
⊗	8	51.181mil (1.3mm)			PTH	Round
⊗	1	59.055mil (1.5mm)			PTH	Round
⊗	4	66.929mil (1.7mm)			PTH	Round
◇	1	31mil (0.787mm)	162mil (4.115mm)	131mil (3.327mm)	NPTH	Slot
☆	1	31mil (0.787mm)	200mil (5.08mm)	169mil (4.293mm)	NPTH	Slot
A	1	31mil (0.787mm)	250mil (6.35mm)	219mil (5.563mm)	NPTH	Slot
◇	2	31mil (0.787mm)	460mil (11.684mm)	429mil (10.897mm)	NPTH	Slot
B	1	31mil (0.787mm)	540mil (13.716mm)	509mil (12.929mm)	NPTH	Slot
A	1	31mil (0.787mm)	600mil (15.24mm)	569mil (14.453mm)	NPTH	Slot
□	1	31mil (0.787mm)	810mil (20.574mm)	779mil (19.787mm)	NPTH	Slot
186 Total						

Slot definitions : Rout Path Length = Calculated from tool start centre position to tool end centre position.
Physical Length = Rout Path Length + Tool Size = Slot length as defined in the PCB layout

ALL ARTWORK VIEWED FROM TOP SIDE	BOARD #: SU601126	REV: B	SUN REV: Not In VersionControl
LAYER NAME = Drill Drawing			
PLOT NAME = Drill Drawing	GENERATED : 3/5/2015 5:50:24 PM	TEXAS INSTRUMENTS	



ALL ARTWORK VIEWED FROM TOP SIDE	BOARD #: SU601126	REV: B	SUN REV: Not In VersionControl
LAYER NAME = M2 Board Dimensions			
PLOT NAME = Board Dimensions	GENERATED : 3/5/2015 5:50:25 PM	TEXAS INSTRUMENTS	