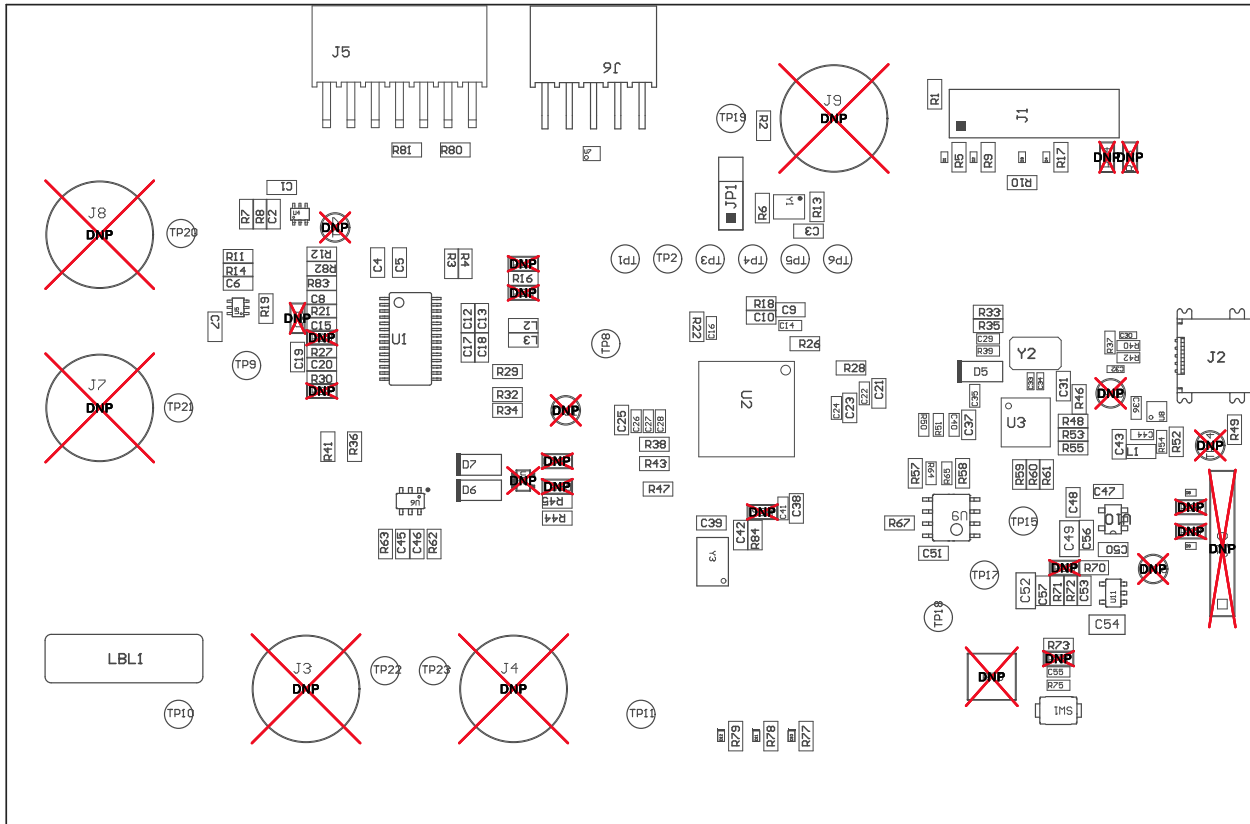
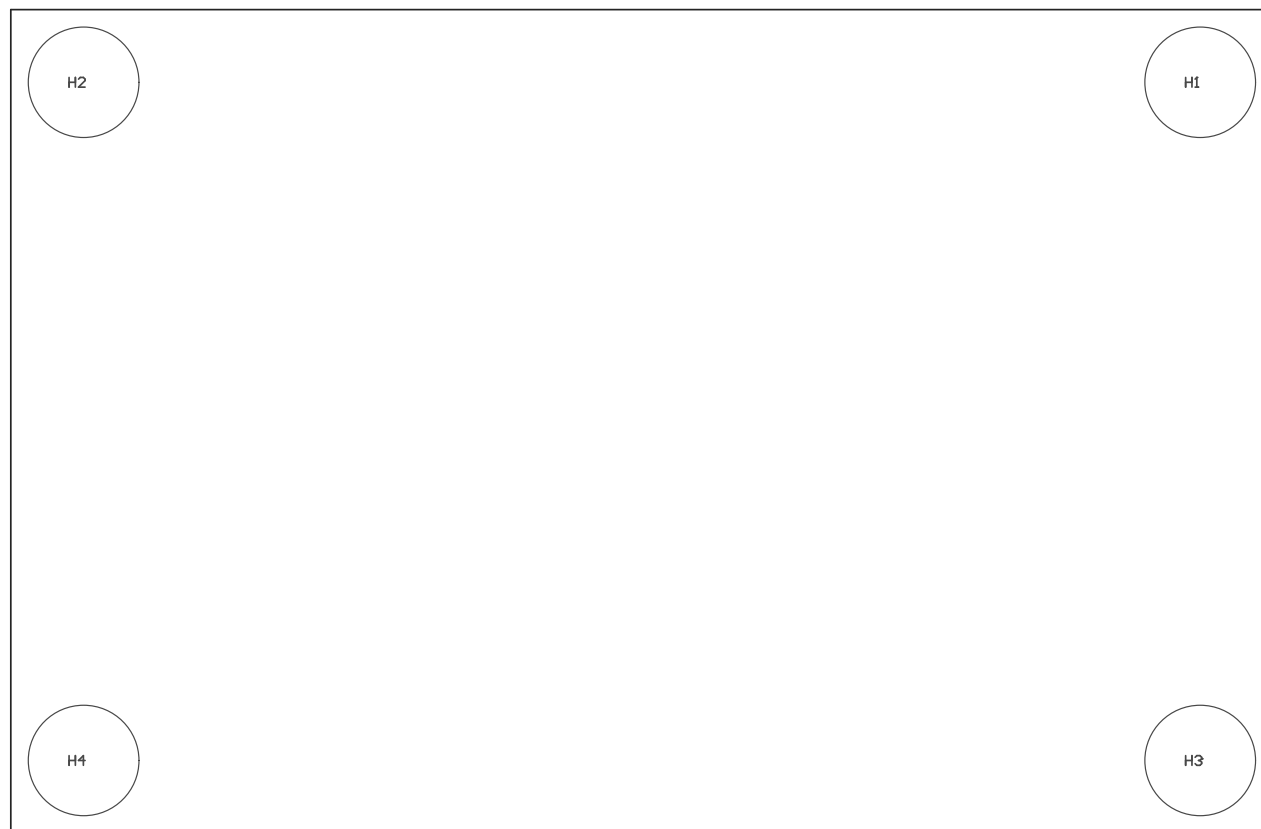


ZZ1 ■ Install label in silkscreened box after final wash. Text shall be 8 pt font. Text shall be per the Label Table in the PDF schematic.
 ZZ2 ■ These assemblies are ESD sensitive, ESD precautions shall be observed.
 ZZ3 ■ These assemblies must be clean and free from flux and all contaminants. Use of no clean flux is not acceptable.
 ZZ4 ■
 ZZ5 ■ Controlled Impedance Layers: 2. Top and bottom layers 50 ohm impedance +/- 5% for 8 mil traces.
 ZZ6 ■ Place SH-JP1 in position 1-2 of JP1



COMPONENTS MARKED 'DNP' SHOULD NOT BE POPULATED, AND MAY NOT BE IN BILL OF MATERIALS
 ASSEMBLY VARIANT: 001

PCB VIEWED FROM TOP SIDE	BOARD #: SV601136	REV: A	SUN REV: Not In VersionControl
IGNORE ->			
PLOT NAME = Top Assembly Drawing	GENERATED : 11/19/2014 9:54:16 AM		TEXAS INSTRUMENTS



COMPONENTS MARKED 'DNP' SHOULD NOT BE POPULATED, AND MAY NOT BE IN BILL OF MATERIALS
ASSEMBLY VARIANT: 001

PCB VIEWED FROM BOTTOM SIDE	BOARD #: SU601136	REV: A	SVN REV: Not In VersionControl
	IGNORE ->		
PLOT NAME = Bottom Assembly Drawing			TEXAS INSTRUMENTS