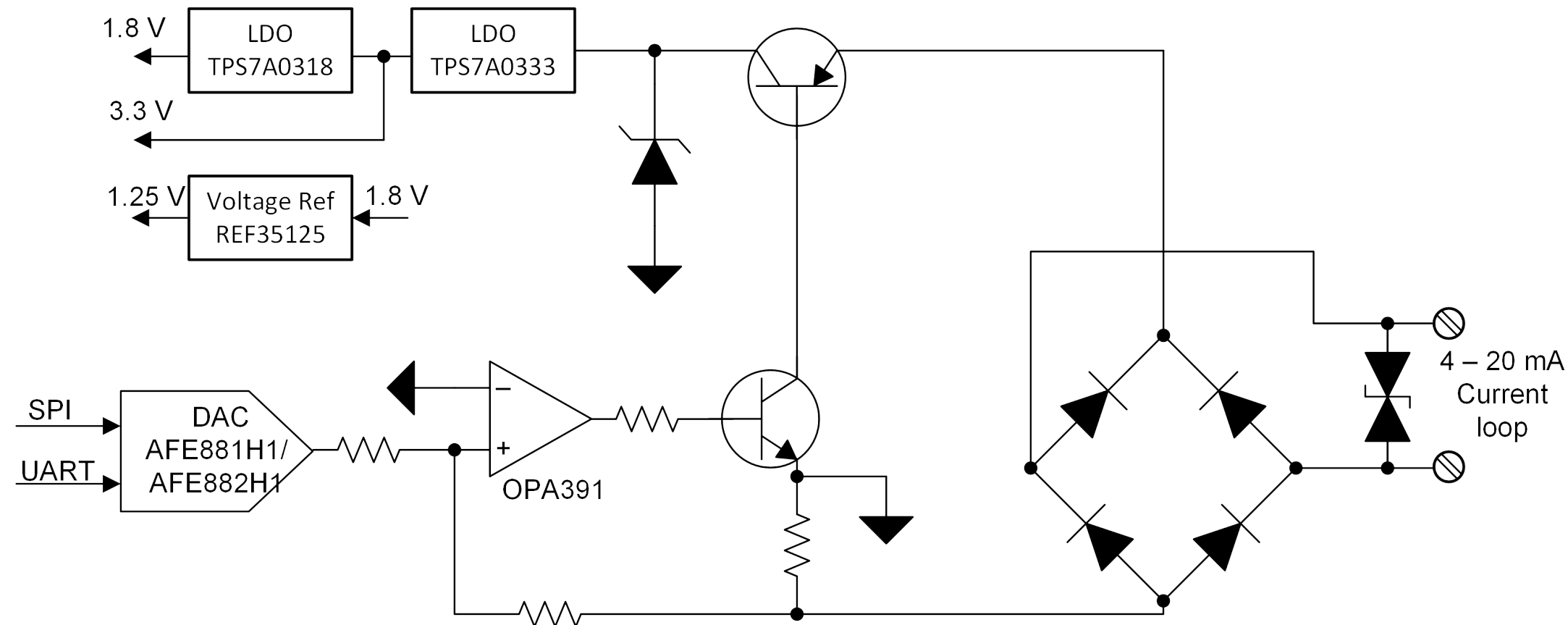



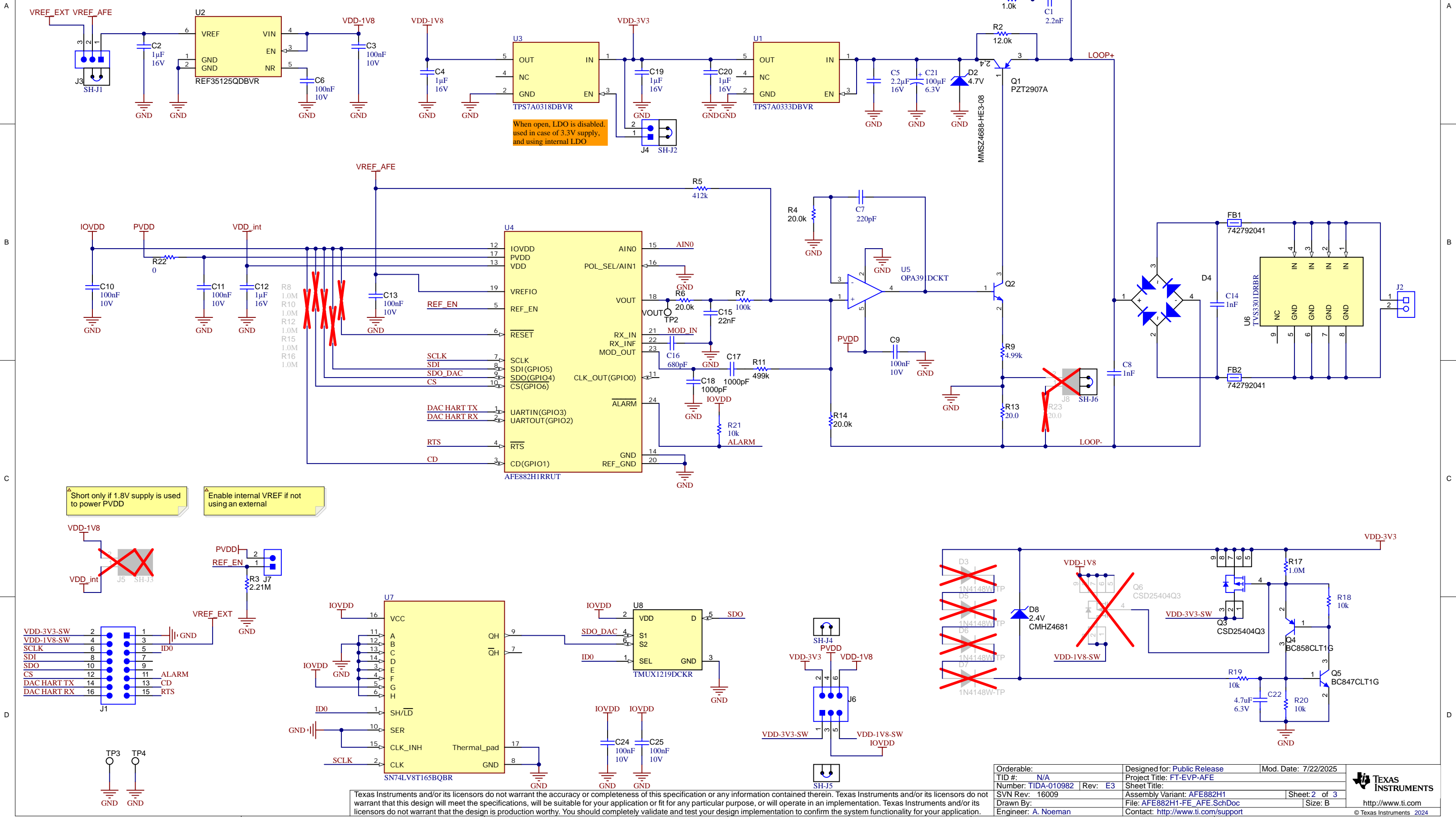
Revision History				
Rev	ECN #	Approved Date	Approved by	Notes
N/A	N/A	N/A	N/A	N/A



Orderable:	Designed for: Public Release	Mod. Date: 6/26/2025	 TEXAS INSTRUMENTS http://www.ti.com © Texas Instruments 2024
TID #: N/A	Project Title: FT-EVP-AFE		
Number: TIDA-010982	Rev: E3	Sheet Title:	
SVN Rev: 15994	Assembly Variant: AFE882H1	Sheet: 1 of 3	
Drawn By:	File: AFE882H1-FE.SchDoc	Size: B	
Engineer: A. Noeman	Contact: http://www.ti.com/support		

Texas Instruments and/or its licensors do not warrant the accuracy or completeness of this specification or any information contained therein. Texas Instruments and/or its licensors do not warrant that this design will meet the specifications, will be suitable for your application or fit for any particular purpose, or will operate in an implementation. Texas Instruments and/or its licensors do not warrant that the design is production worthy. You should completely validate and test your design implementation to confirm the system functionality for your application.

JUMPER: 1-2 - use REF35125 for reference
JUMPER: 2-3 - use external (MCU board) for reference
JUMPER: DNP - use AFE881x1 for reference



Texas Instruments and/or its licensors do not warrant the accuracy or completeness of this specification or any information contained therein. Texas Instruments and/or its licensors do not warrant that this design will meet the specifications, will be suitable for your application or fit for any particular purpose, or will operate in an implementation. Texas Instruments and/or its licensors do not warrant that the design is production worthy. You should completely validate and test your design implementation to confirm the system functionality for your application.



PCB Number: TIDA-010982
PCB Rev: E3



LBL1
PCB Label
THT-14-423-10
Size: 0.65" x 0.20 "

ZZ1
Label Assembly Note
This Assembly Note is for PCB labels only

ZZ2
Assembly Note
These assemblies are ESD sensitive, ESD precautions shall be observed.

ZZ3
Assembly Note
These assemblies must be clean and free from flux and all contaminants. Use of no clean flux is not acceptable.

ZZ4
Assembly Note
These assemblies must comply with workmanship standards IPC-A-610 Class 2, unless otherwise specified.

Variant/Label Table	
Variant	Label Text
AFE881H1	Default for AFE881H1
AFE882H1	Default for AFE882H1