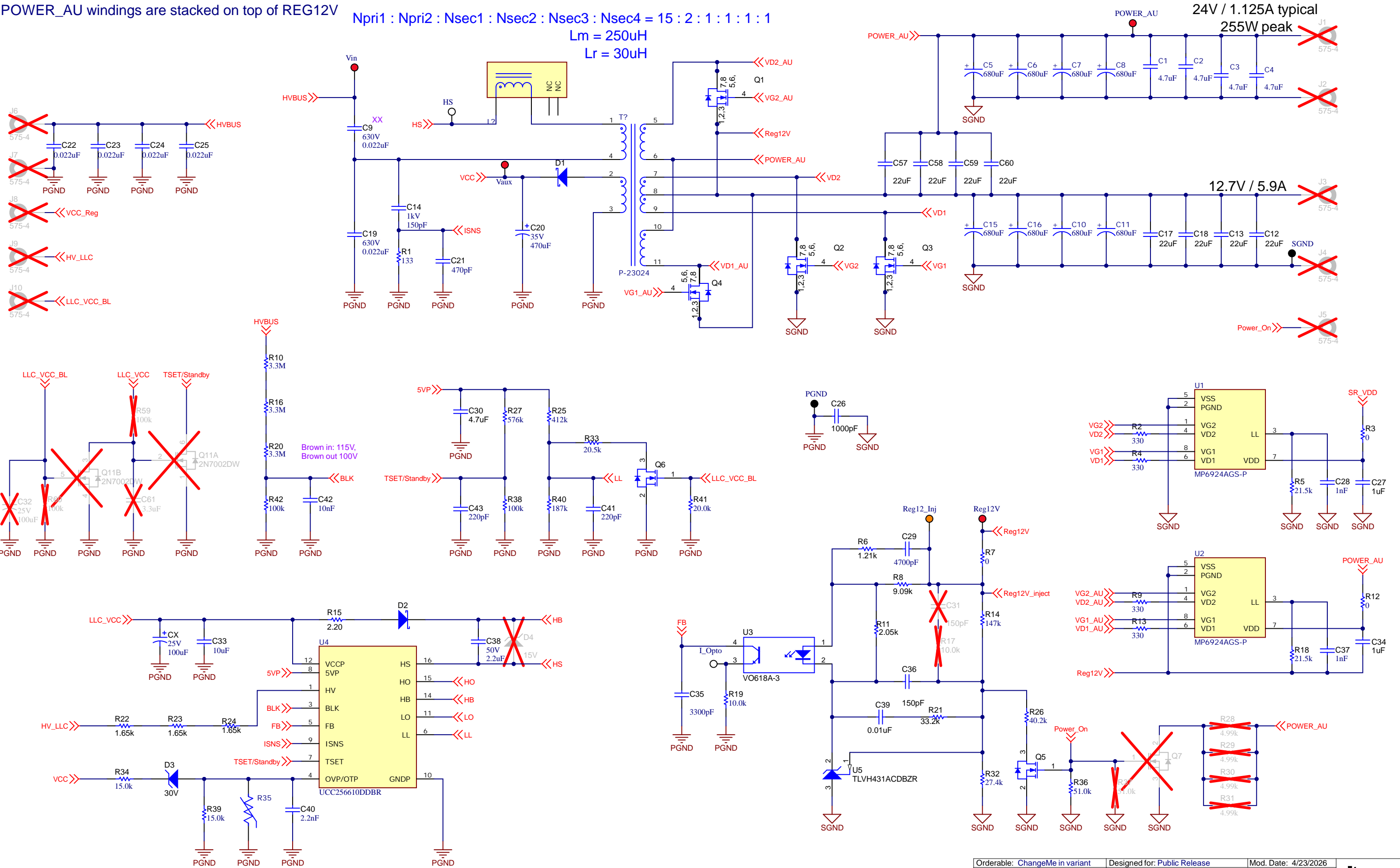


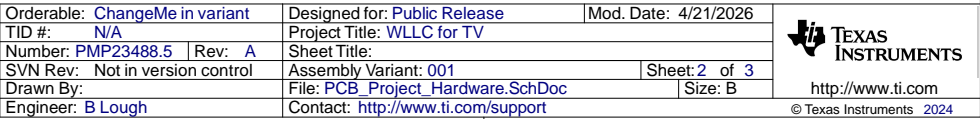
Notes:  
POWER\_AU windings are stacked on top of REG12V

$$N_{pri1} : N_{pri2} : N_{sec1} : N_{sec2} : N_{sec3} : N_{sec4} = 15 : 2 : 1 : 1 : 1 : 1$$
  
$$L_m = 250\mu H$$
  
$$L_r = 30\mu H$$



Texas Instruments and/or its licensors do not warrant the accuracy or completeness of this specification or any information contained therein. Texas Instruments and/or its licensors do not warrant that this design will meet the specifications, will be suitable for your application or fit for any particular purpose, or will operate in an implementation. Texas Instruments and/or its licensors do not warrant that the design is production worthy. You should completely validate and test your design implementation to confirm the system functionality for your application.

Orderable: <a href="#">ChangeMe in variant</a>	Designed for: <a href="#">Public Release</a>	Mod. Date: 4/23/2026
TID #: N/A	Project Title: <a href="#">WLLC for TV</a>	
Number: <a href="#">PMP23488.5</a>	Rev: <a href="#">A</a>	Sheet Title:
SVN Rev: <a href="#">Not in version control</a>	Assembly Variant: <a href="#">001</a>	Sheet: <a href="#">1 of 3</a>
Drawn By:	File: <a href="#">PMP23488.5 WLLC HF.SchDoc</a>	Size: <a href="#">B</a>
Engineer: <a href="#">B Lough</a>	Contact: <a href="#">http://www.ti.com/support</a>	



A

B

C

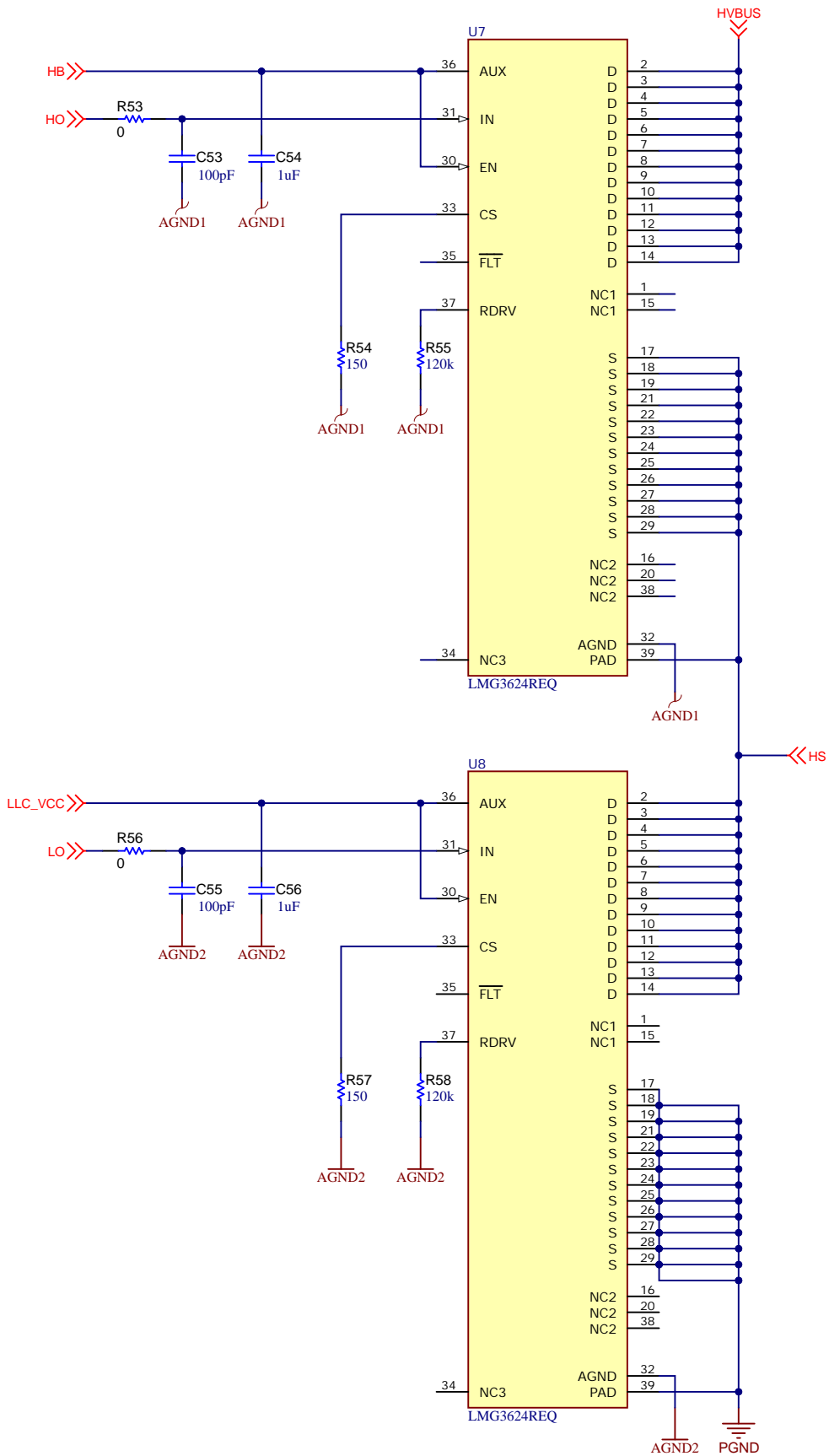
D

A

B

C

D



Texas Instruments and/or its licensors do not warrant the accuracy or completeness of this specification or any information contained therein. Texas Instruments and/or its licensors do not warrant that this design will meet the specifications, will be suitable for your application or fit for any particular purpose, or will operate in an implementation. Texas Instruments and/or its licensors do not warrant that the design is production worthy. You should completely validate and test your design implementation to confirm the system functionality for your application.

Orderable: <a href="#">ChangeMe in variant</a>	Designed for: <a href="#">Public Release</a>	Mod. Date: 3/11/2026
TID #: <a href="#">N/A</a>	Project Title: <a href="#">WLLC for TV</a>	
Number: <a href="#">PMP23488.5</a>	Rev: <a href="#">A</a>	Sheet Title:
SVN Rev: <a href="#">Not in version control</a>	Assembly Variant: <a href="#">001</a>	Sheet: <a href="#">3</a> of <a href="#">3</a>
Drawn By:	File: <a href="#">PMP23488.5 GaN.SchDoc</a>	Size: <a href="#">B</a>
Engineer: <a href="#">B Lough</a>	Contact: <a href="#">http://www.ti.com/support</a>	