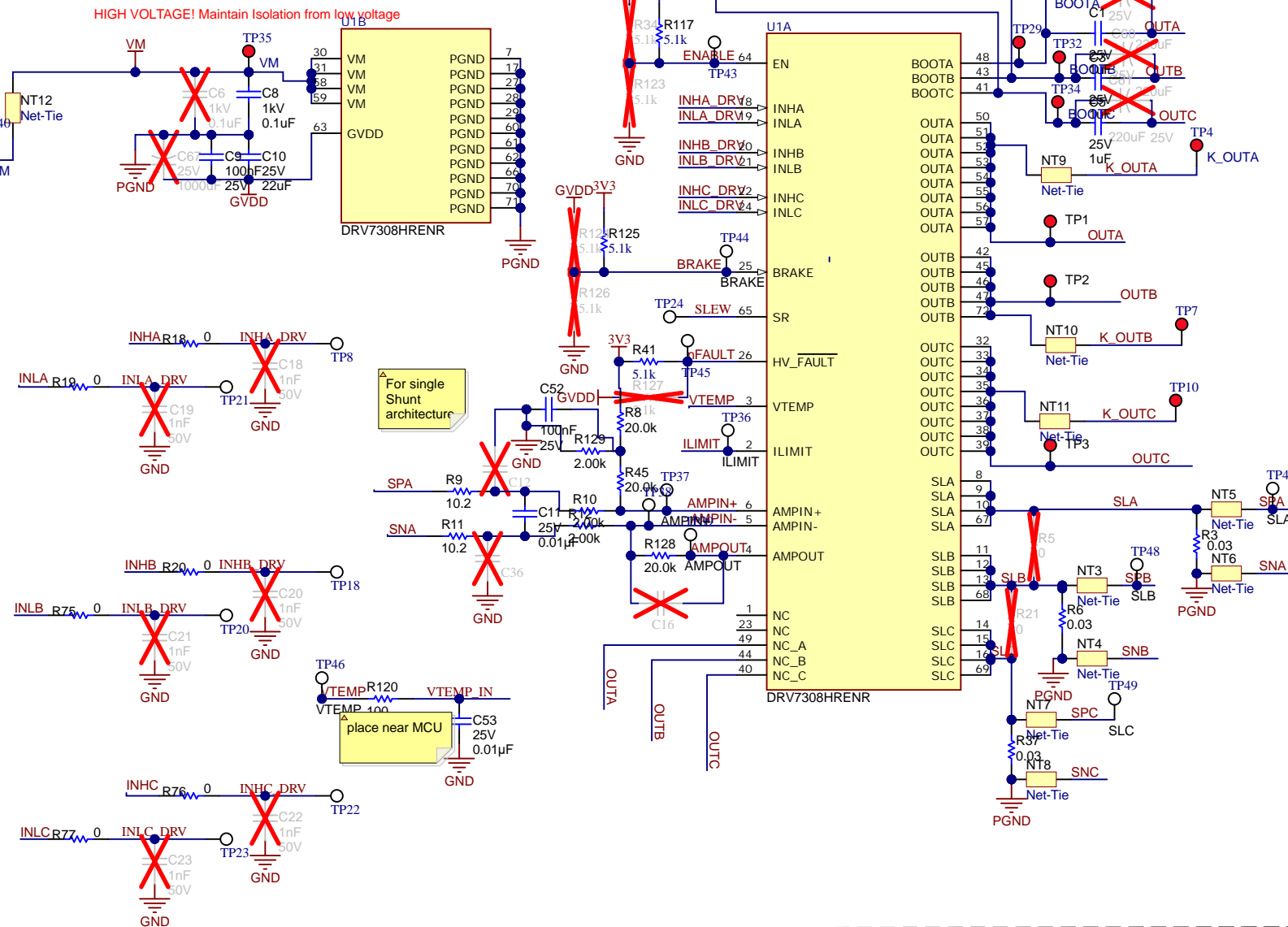
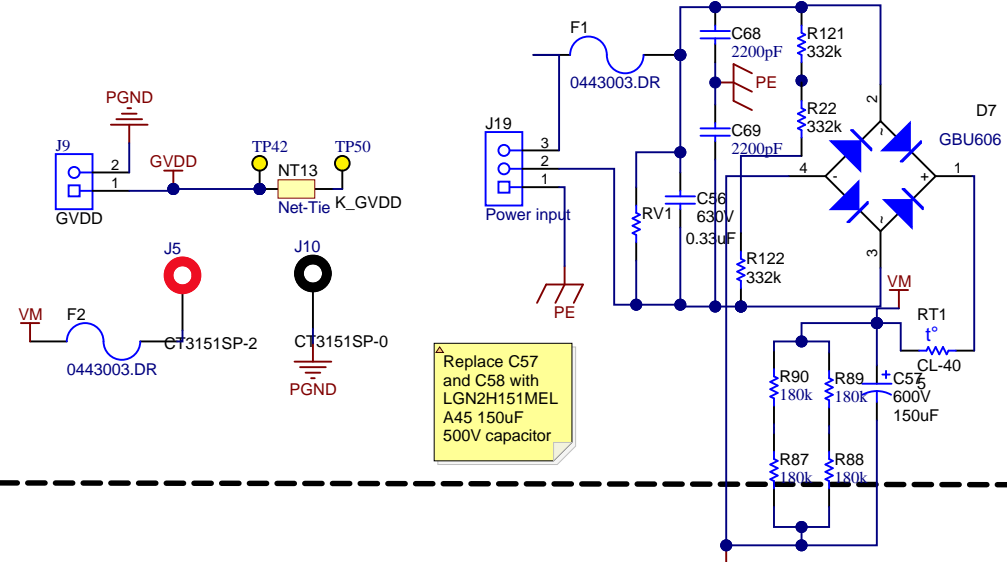


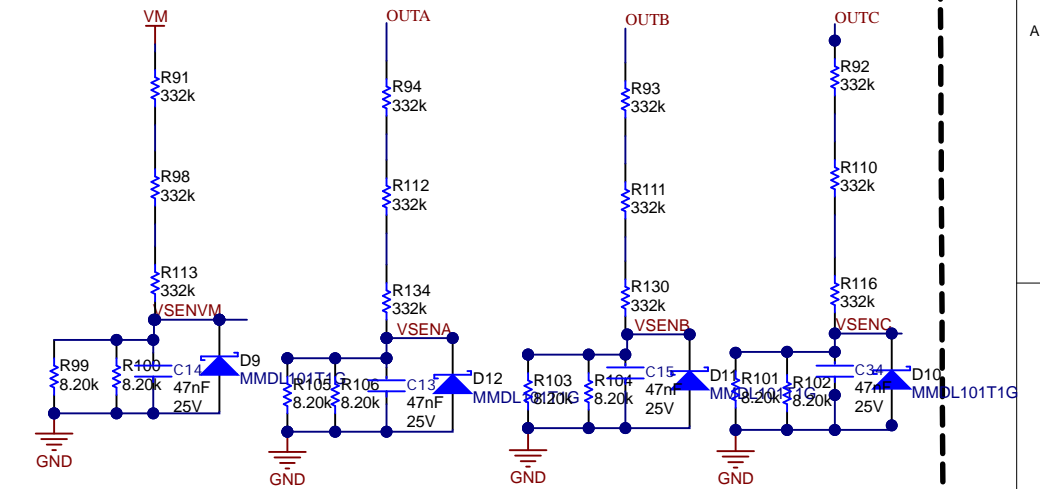
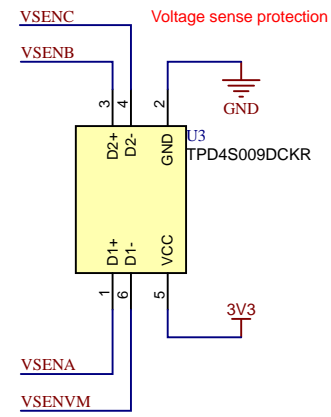
DRV7308



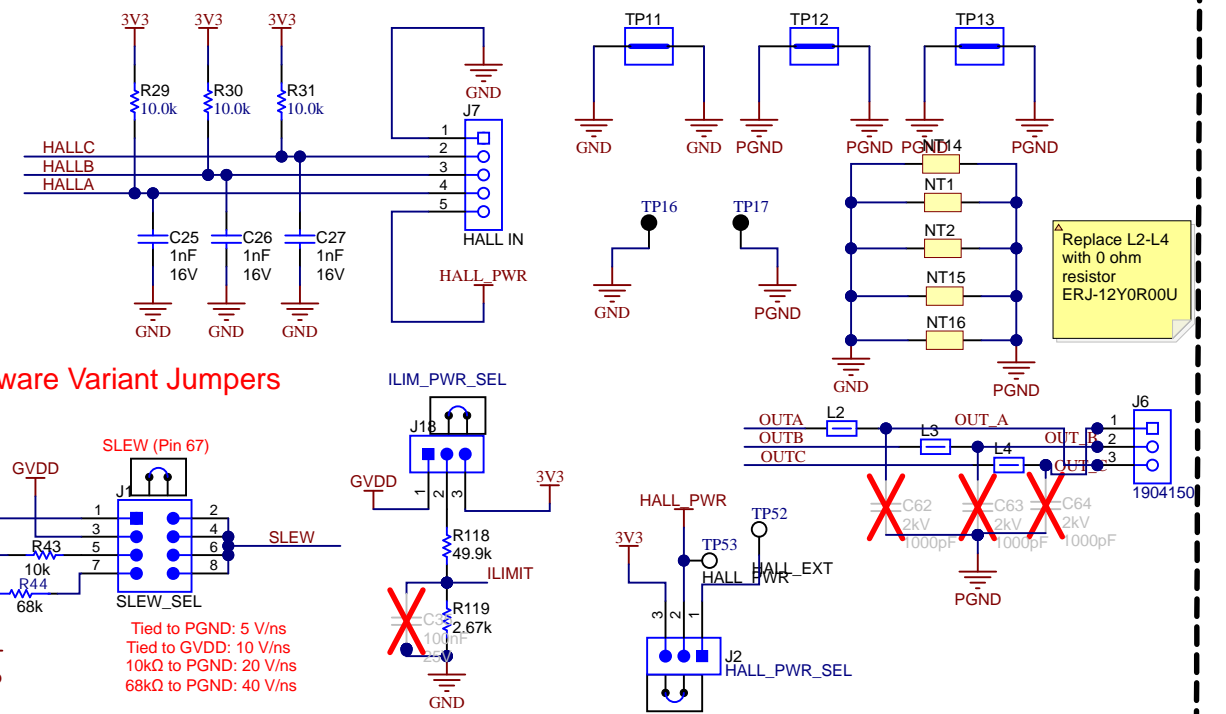
Supply Connectors



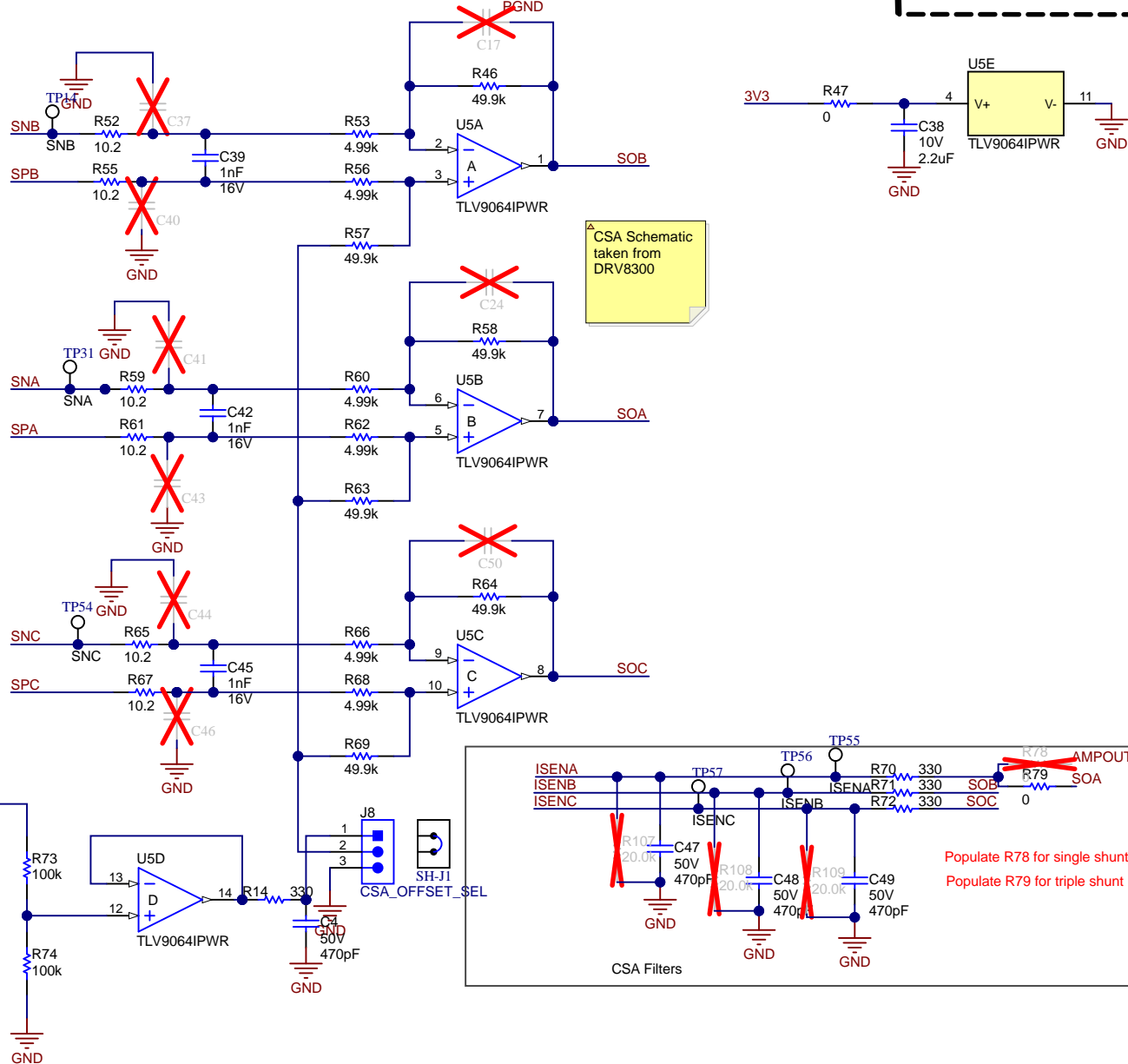
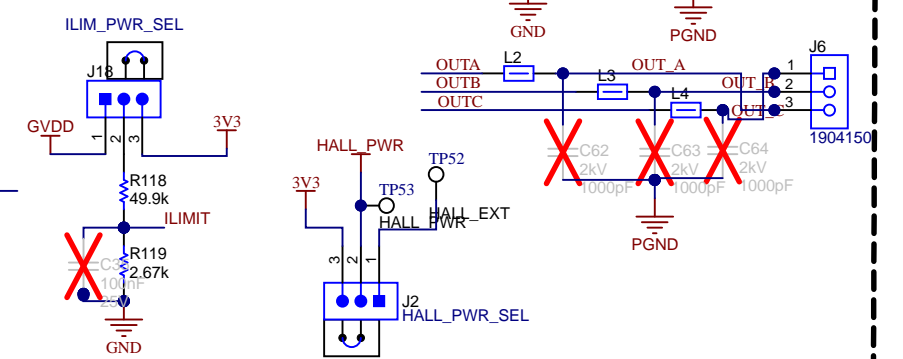
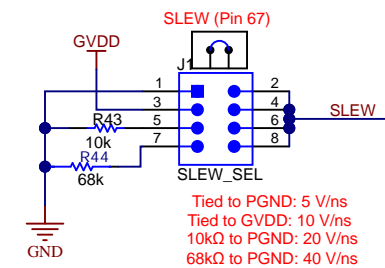
VOLTAGE SENSE & PROTECTION

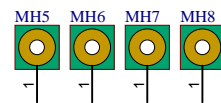


CONNECTORS & INTERFACE



Hardware Variant Jumpers





PCB Number: MD096
PCB Rev: A

PCB
LOGO
Texas Instruments



PCB
LOGO
FCC disclaimer

PCB
LOGO
WEEE logo

[illegible]

ZZ1
Label Assembly Note
 This Assembly Note is for PCB labels only

ZZ2

Assembly Note

These assemblies are ESD sensitive, ESD precautions shall be observed.

ZZ3

Assembly Note

These assemblies must be clean and free from flux and all contaminants. Use of no clean flux is not acceptable.

ZZ4

Assembly Note

These assemblies must comply with workmanship standards IPC-A-610 Class 2, unless otherwise specified.

Texas Instruments and/or its licensors do not warrant the accuracy or completeness of this specification or any information contained therein. Texas Instruments and/or its licensors do not warrant that this design will meet the specifications, will be suitable for your application or fit for any particular purpose, or will operate in an implementation. Texas Instruments and/or its licensors do not warrant that the design is production worthy. You should completely validate and test your design implementation to confirm the system functionality for your application.

Orderable: DRV7308EVM	Designed for:	Mod. Date: 9/15/2025
TID #: N/A	Project Title: MD096A	
Number: MD096	Rev: A	Sheet Title:
SVN Rev: Not in version control	Assembly Variant: 001	Sheet: 3 of 3
Drawn By: Anthony Lodi	File: MD096A_HARDWARE.SchDoc	Size: B
Engineer: Anthony Lodi	Contact: http://www.ti.com/support	



http://www.ti.com