

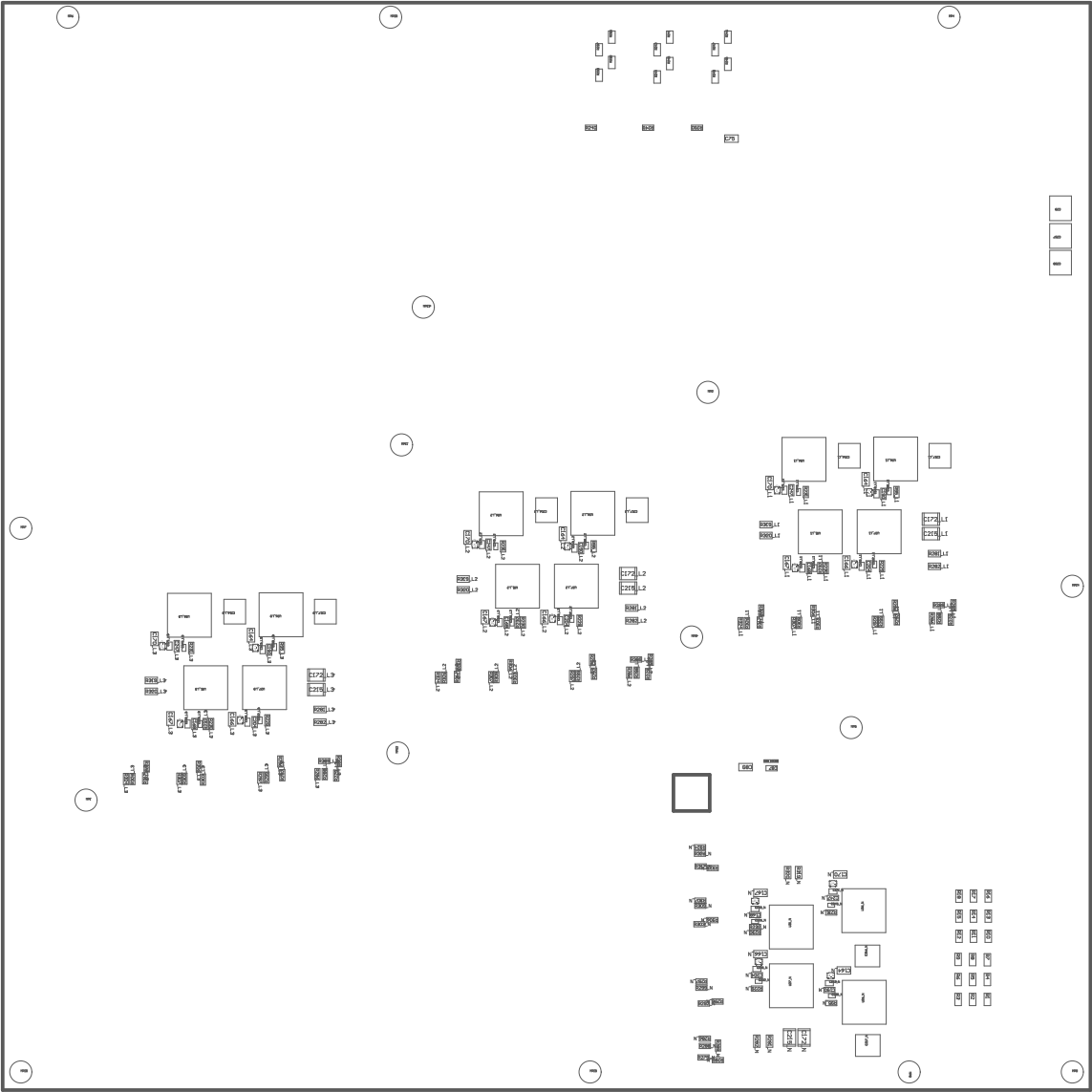


224 ■ These assemblies must comply with workmanship standards IPC-A-610 Class 2, unless otherwise specified.

221 ■ Install label in silkscreened box after final wash. Text shall be 8 pt font. Text shall be per the Label Table in the PDF schematic.

PCB VIEWED FROM TOP SIDE	BOARD #: TIDA-010957	REV: EI	SUN REV: 6546 [Locally Modified]
Top Assembly Drawing	GENERATED : 12/12/2025 17:00:56		TEXAS INSTRUMENTS

PLOT NAME =



COMPONENTS MARKED 'DNP' SHOULD NOT BE POPULATED.
ASSEMBLY VARIANT: 001

PCB VIEWED FROM BOTTOM SIDE	BOARD #: TIDA-010957	REV: E1	SUN REV: 6546 [Locally Modified]
PLOT NAME = Bottom Assembly Drawing	GENERATED	12/12/2025	17:00:56