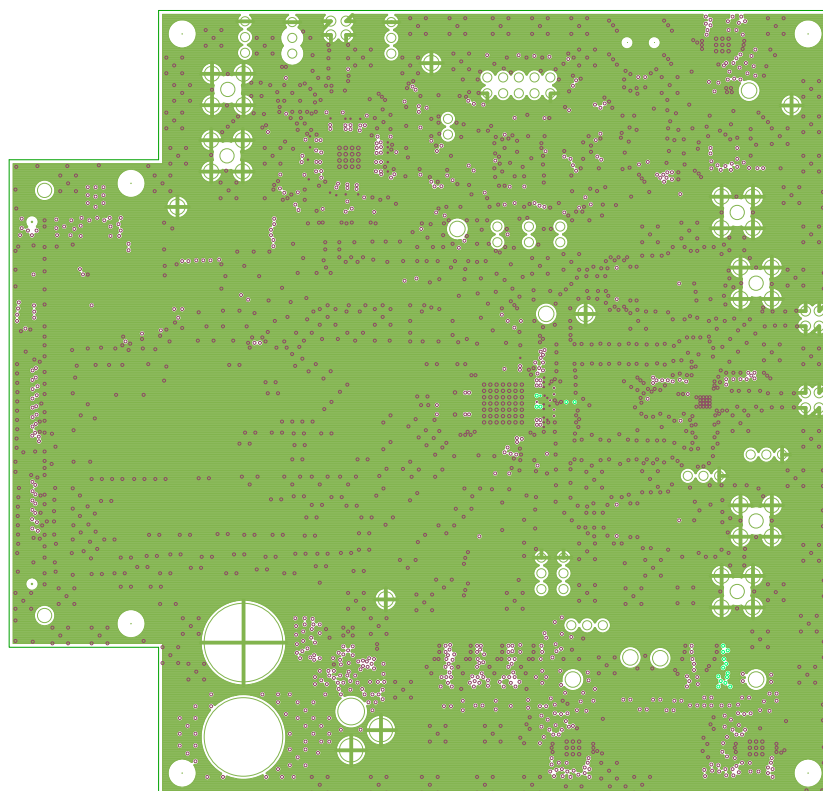
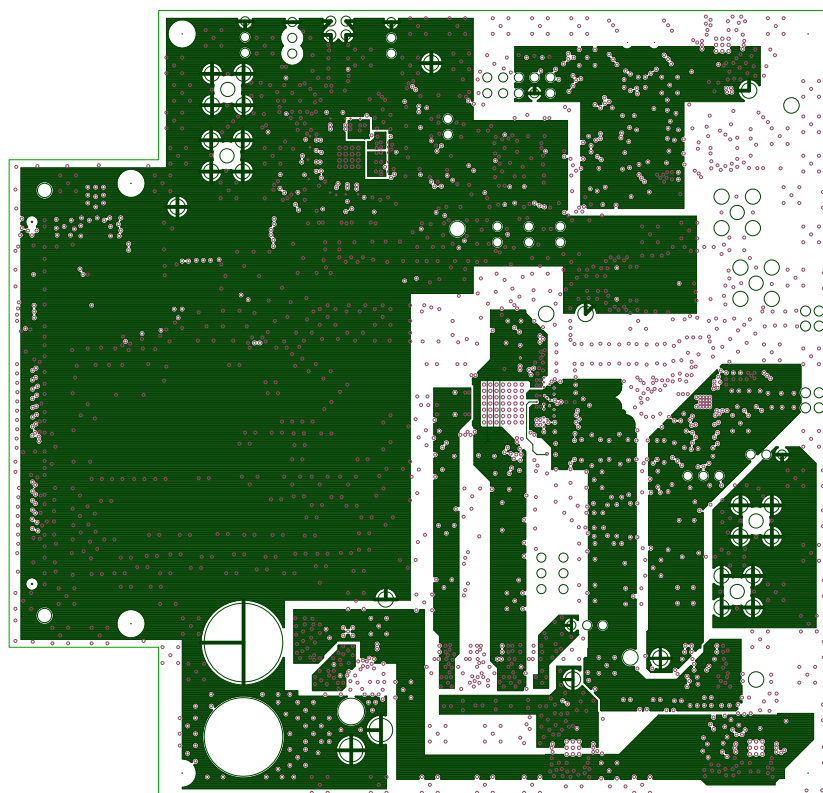


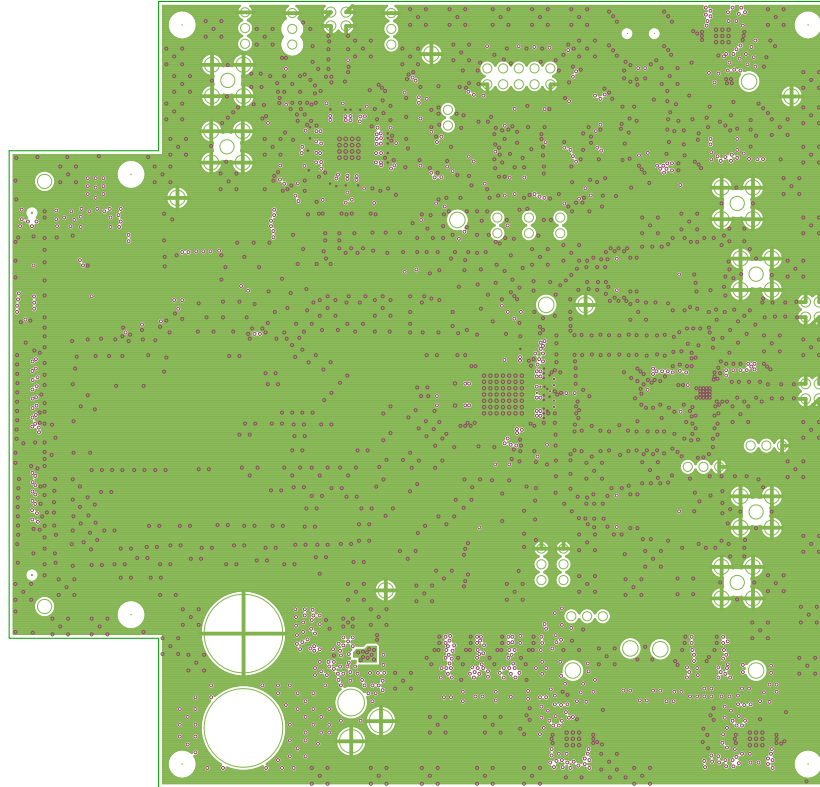
TEXAS INSTRUMENTS
 DAC3174 EVM REV A
 LAYER 1 (TOP SIDE)
 SILKSCREEN TOP



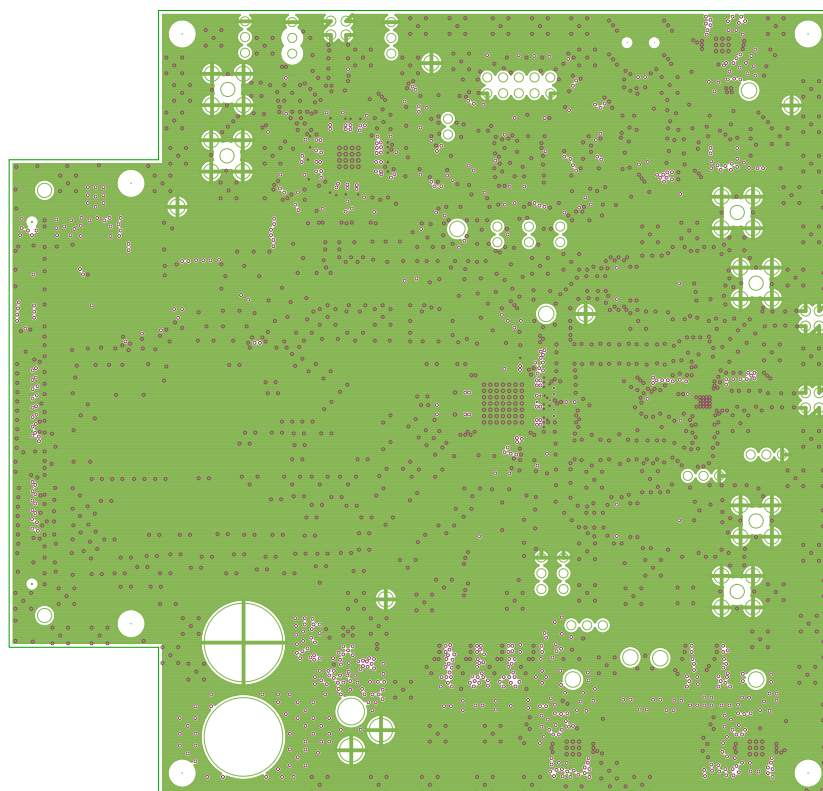
TEXAS INSTRUMENTS
DAC3174 EVM REV A
LAYER 2 - GND



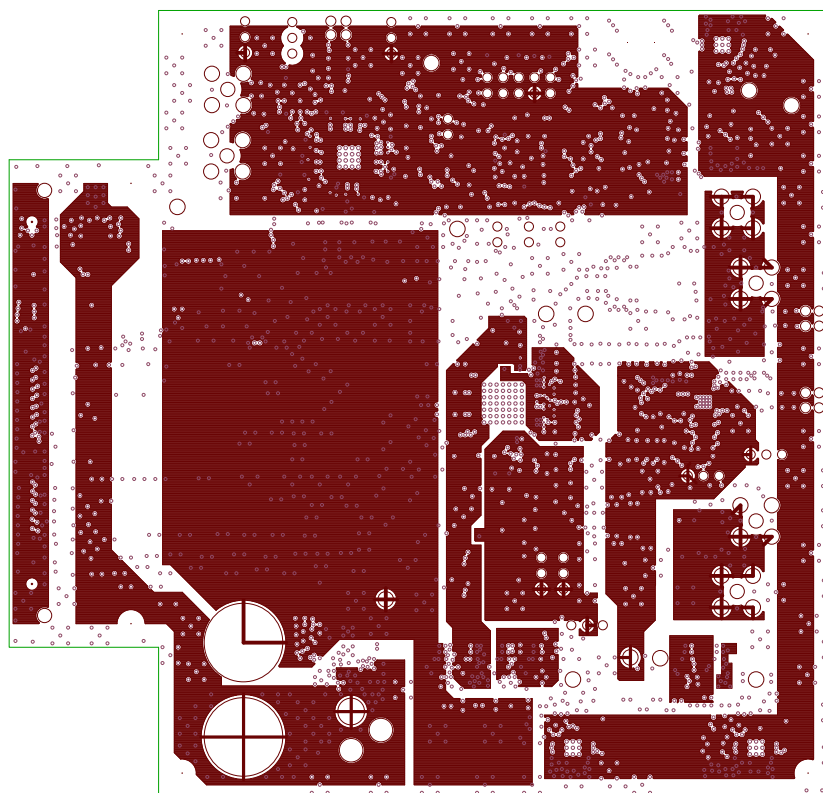
TEXAS INSTRUMENTS
DAC3174 EVM REV A
LAYER 3 - PWR



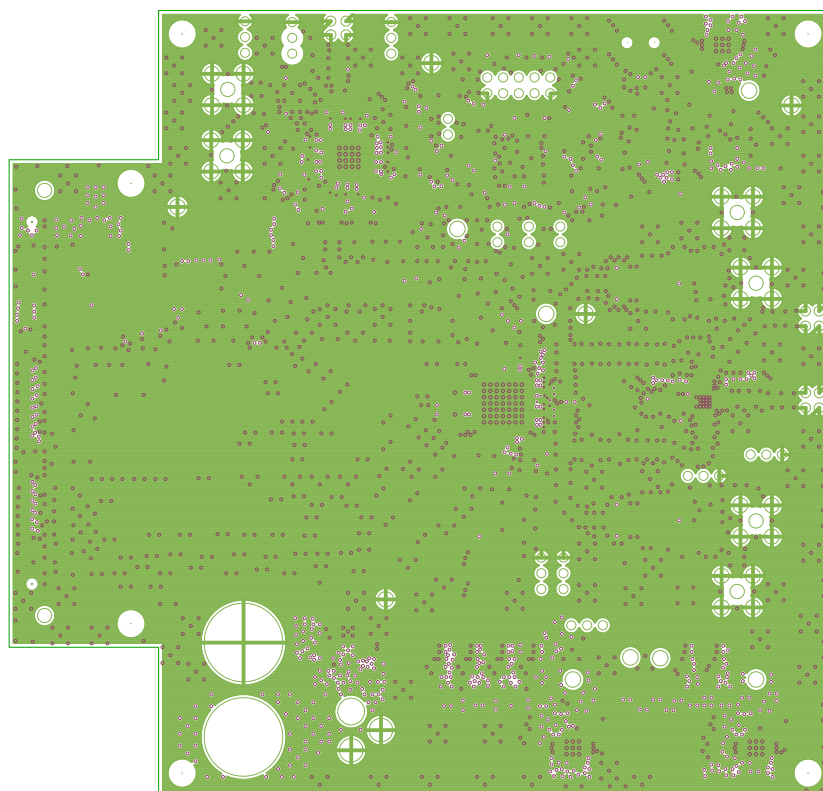
TEXAS INSTRUMENTS
DAC3174 EVM REV A
LAYER 4 - GND



TEXAS INSTRUMENTS
DAC3174 EVM REV A
LAYER 5 - GND



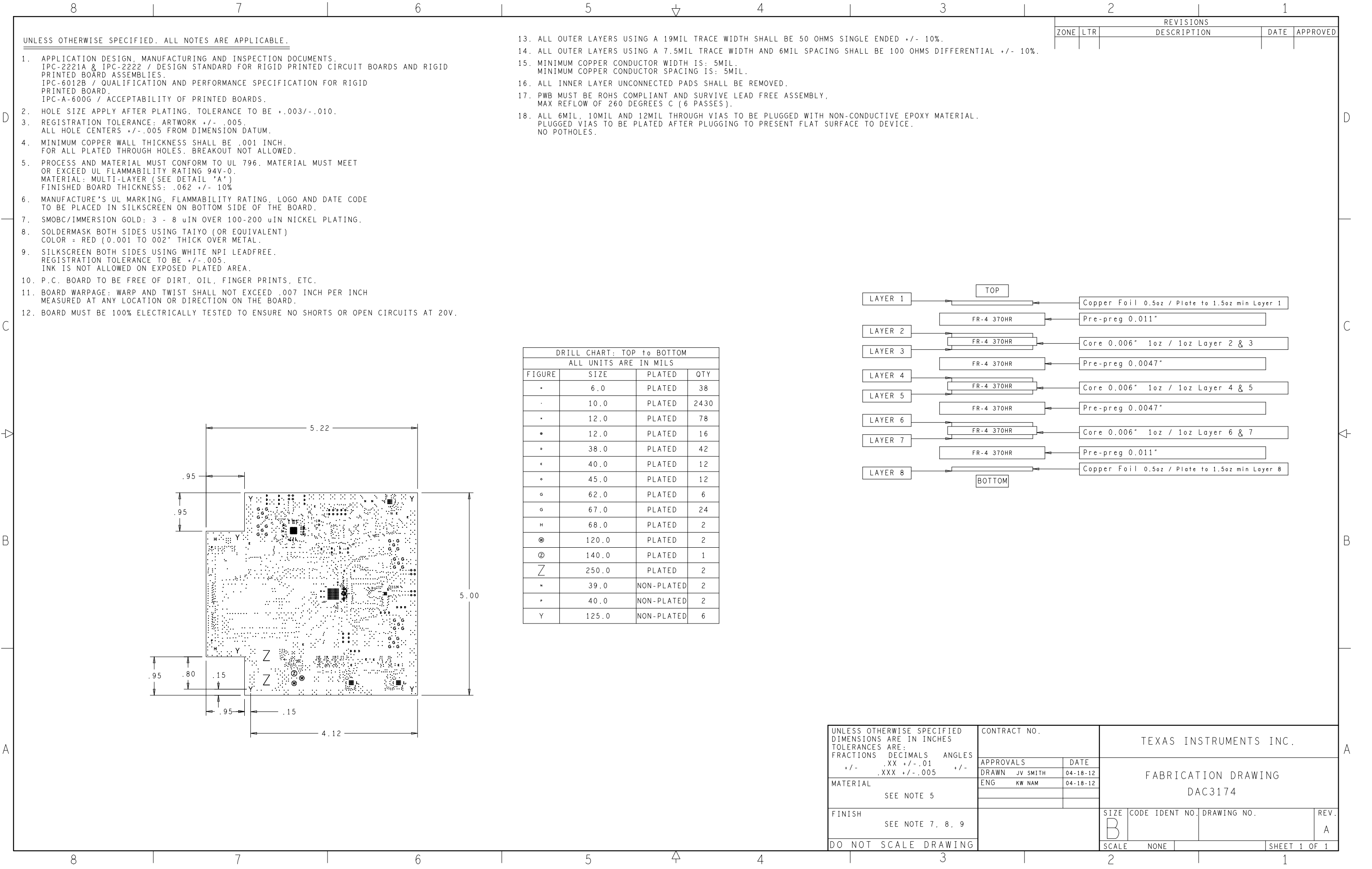
TEXAS INSTRUMENTS
DAC3174 EVM REV A
LAYER 6 - PWR



TEXAS INSTRUMENTS
DAC3174 EVM REV A
LAYER 7 - GND



TEXAS INSTRUMENTS
DAC3174 EVM REV A
LAYER 8 (BOTTOM SIDE)
SILKSCREEN BOTTOM

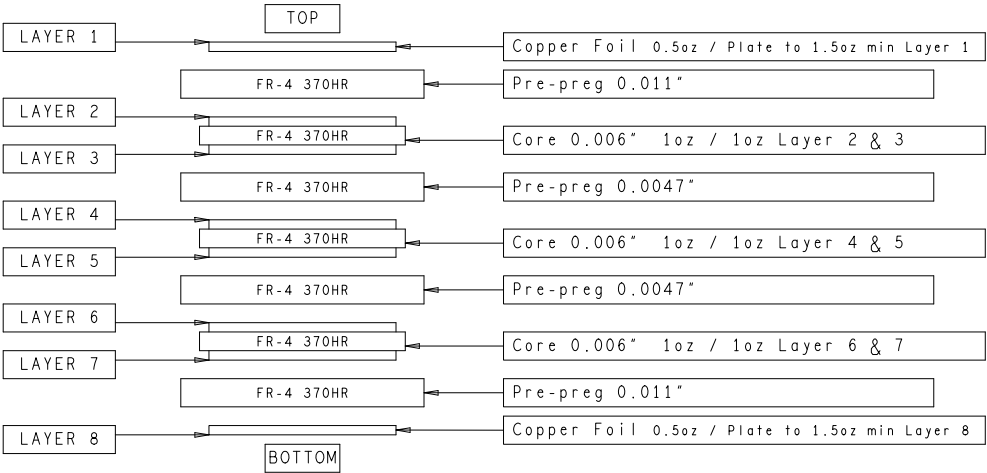


UNLESS OTHERWISE SPECIFIED. ALL NOTES ARE APPLICABLE.

1. APPLICATION DESIGN, MANUFACTURING AND INSPECTION DOCUMENTS.
IPC-2221A & IPC-2222 / DESIGN STANDARD FOR RIGID PRINTED CIRCUIT BOARDS AND RIGID PRINTED BOARD ASSEMBLIES.
IPC-6012B / QUALIFICATION AND PERFORMANCE SPECIFICATION FOR RIGID PRINTED BOARD.
IPC-A-600G / ACCEPTABILITY OF PRINTED BOARDS.
2. HOLE SIZE APPLY AFTER PLATING. TOLERANCE TO BE $\pm .003/- .010$.
3. REGISTRATION TOLERANCE: ARTWORK $\pm .005$.
ALL HOLE CENTERS $\pm .005$ FROM DIMENSION DATUM.
4. MINIMUM COPPER WALL THICKNESS SHALL BE $.001$ INCH.
FOR ALL PLATED THROUGH HOLES. BREAKOUT NOT ALLOWED.
5. PROCESS AND MATERIAL MUST CONFORM TO UL 796. MATERIAL MUST MEET OR EXCEED UL FLAMMABILITY RATING 94V-0.
MATERIAL: MULTI-LAYER (SEE DETAIL 'A')
FINISHED BOARD THICKNESS: $.062 \pm 10\%$
6. MANUFACTURE'S UL MARKING, FLAMMABILITY RATING, LOGO AND DATE CODE TO BE PLACED IN SILKSCREEN ON BOTTOM SIDE OF THE BOARD.
7. SMOBC/IMMERSION GOLD: $3 - 8 \mu\text{IN}$ OVER $100-200 \mu\text{IN}$ NICKEL PLATING.
8. SOLDERMASK BOTH SIDES USING TAIYO (OR EQUIVALENT)
COLOR = RED (0.001 TO 0.002 " THICK OVER METAL).
9. SILKSCREEN BOTH SIDES USING WHITE NPI LEADFREE.
REGISTRATION TOLERANCE TO BE $\pm .005$.
INK IS NOT ALLOWED ON EXPOSED PLATED AREA.
10. P.C. BOARD TO BE FREE OF DIRT, OIL, FINGER PRINTS, ETC.
11. BOARD WARPAGE: WARP AND TWIST SHALL NOT EXCEED $.007$ INCH PER INCH MEASURED AT ANY LOCATION OR DIRECTION ON THE BOARD.
12. BOARD MUST BE 100% ELECTRICALLY TESTED TO ENSURE NO SHORTS OR OPEN CIRCUITS AT 20V.

13. ALL OUTER LAYERS USING A 19MIL TRACE WIDTH SHALL BE 50 OHMS SINGLE ENDED $\pm 10\%$.
14. ALL OUTER LAYERS USING A 7.5MIL TRACE WIDTH AND 6MIL SPACING SHALL BE 100 OHMS DIFFERENTIAL $\pm 10\%$.
15. MINIMUM COPPER CONDUCTOR WIDTH IS: 5MIL.
MINIMUM COPPER CONDUCTOR SPACING IS: 5MIL.
16. ALL INNER LAYER UNCONNECTED PADS SHALL BE REMOVED.
17. PWB MUST BE ROHS COMPLIANT AND SURVIVE LEAD FREE ASSEMBLY.
MAX REFLOW OF 260 DEGREES C (6 PASSES).
18. ALL 6MIL, 10MIL AND 12MIL THROUGH VIAS TO BE PLUGGED WITH NON-CONDUCTIVE EPOXY MATERIAL.
PLUGGED VIAS TO BE PLATED AFTER PLUGGING TO PRESENT FLAT SURFACE TO DEVICE.
NO POTHOLES.

DRILL CHART: TOP to BOTTOM			
ALL UNITS ARE IN MILS			
FIGURE	SIZE	PLATED	QTY
•	6.0	PLATED	38
•	10.0	PLATED	2430
•	12.0	PLATED	78
•	12.0	PLATED	16
•	38.0	PLATED	42
•	40.0	PLATED	12
•	45.0	PLATED	12
•	62.0	PLATED	6
•	67.0	PLATED	24
•	68.0	PLATED	2
⊙	120.0	PLATED	2
⊙	140.0	PLATED	1
Z	250.0	PLATED	2
•	39.0	NON-PLATED	2
•	40.0	NON-PLATED	2
Y	125.0	NON-PLATED	6



UNLESS OTHERWISE SPECIFIED DIMENSIONS ARE IN INCHES TOLERANCES ARE: FRACTIONS DECIMALS ANGLES +/- .XX +/- .01 +/- .XXX +/- .005 +/-	CONTRACT NO.		TEXAS INSTRUMENTS INC.					
	APPROVALS		DATE		FABRICATION DRAWING DAC3174			
	DRAWN JV SMITH		04-18-12					
	ENG KW NAM		04-18-12					
	MATERIAL							
SEE NOTE 5								
FINISH								
SEE NOTE 7, 8, 9			SIZE	CODE IDENT NO.	DRAWING NO.		REV.	
			B				A	
DO NOT SCALE DRAWING			SCALE	NONE			SHEET 1 OF 1	