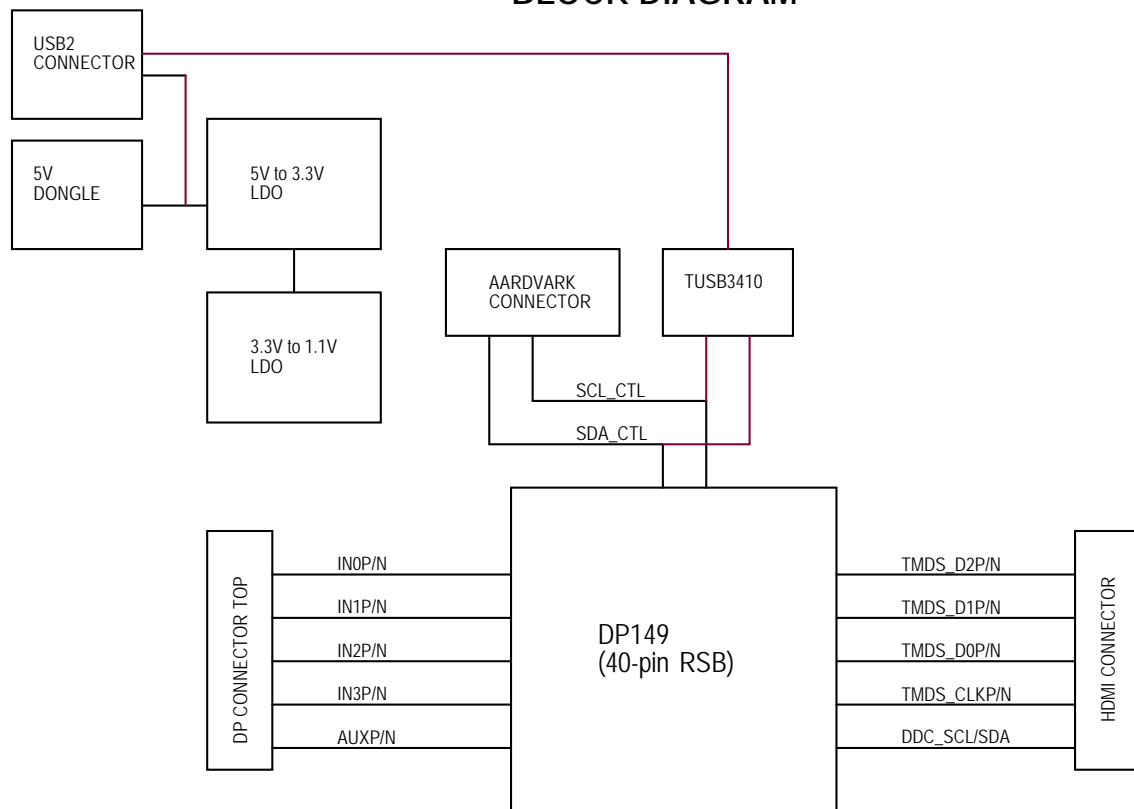


NOTES:

- 100-ohm differential impedance for HDMI and DP differential pairs.

BLOCK DIAGRAM



DP149RSBEVM, INT023

SIZE

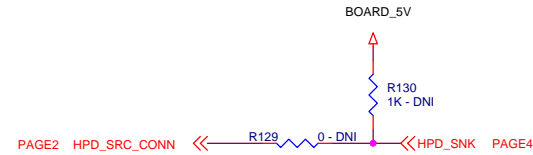
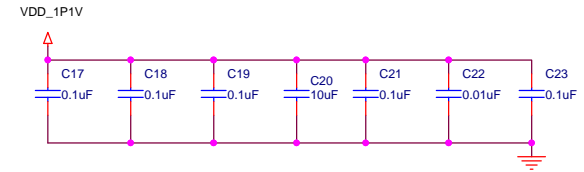
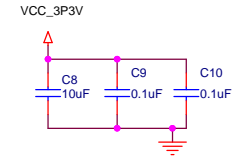
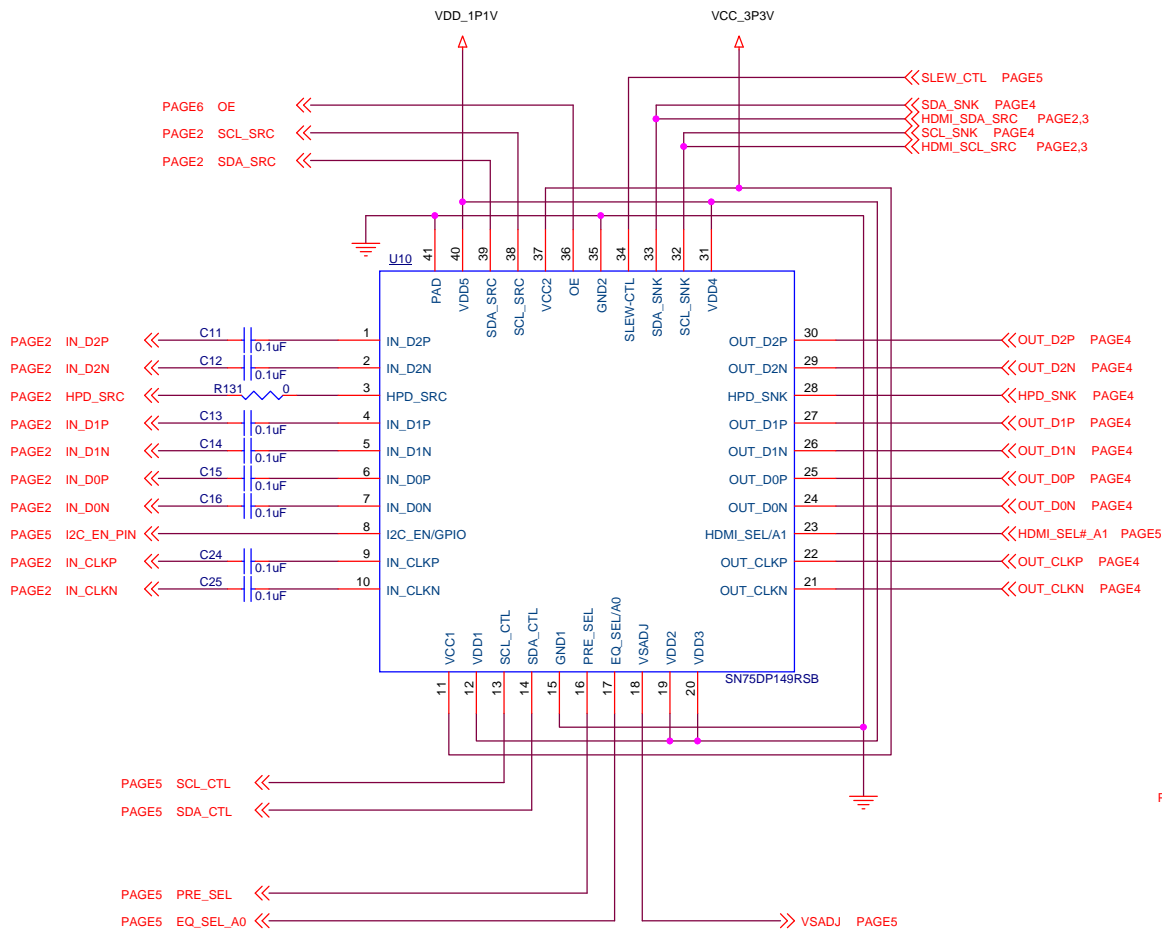
A

DWG NO:

SCALE: NONE

Wednesday, October 28, 2015

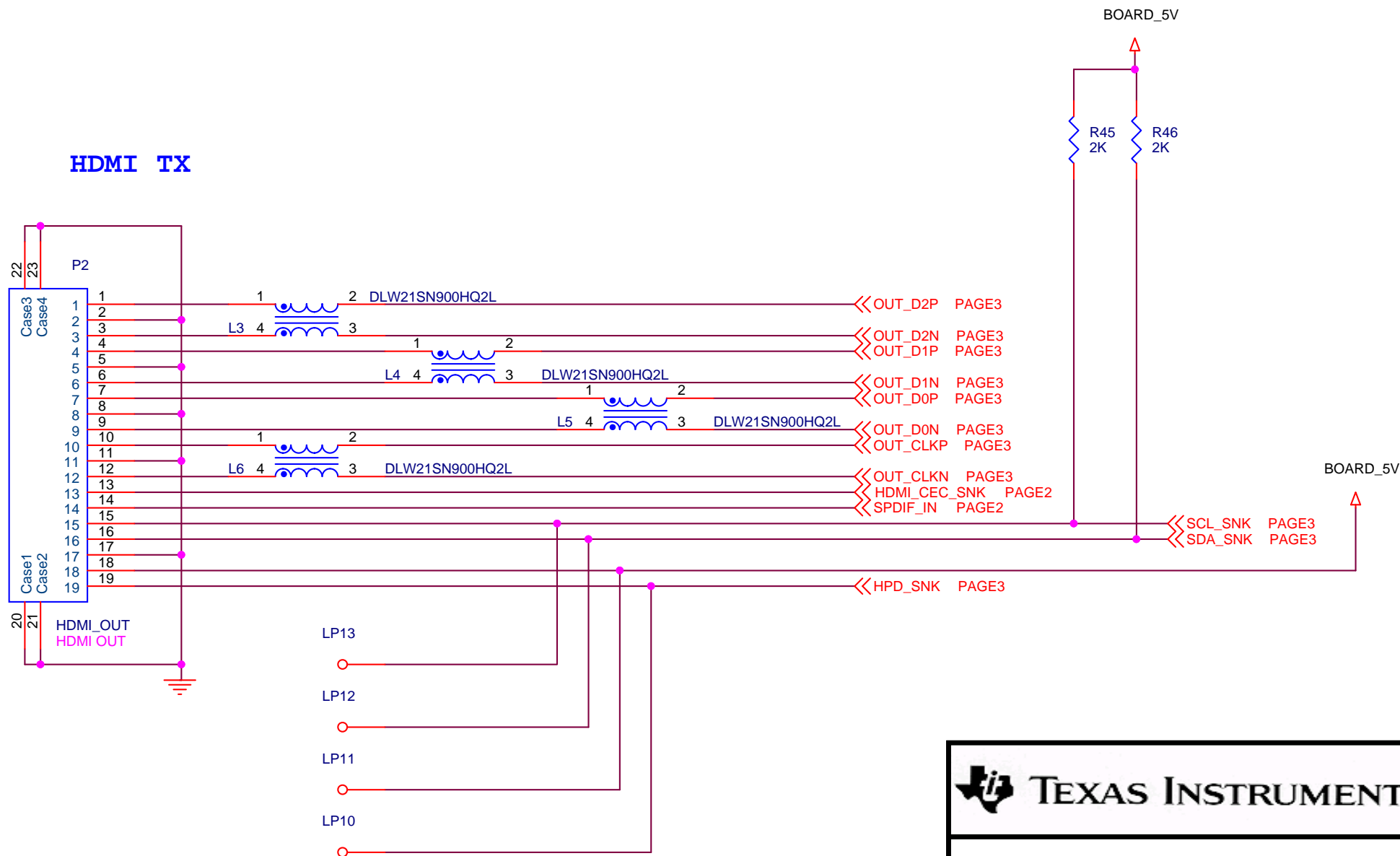
Sheet 1 of 8



Pop R131, no pop R129, R130 for HPD on
No pop R131, pop R129, R130 for HPD snoop only

DP149RSBEVM, DP149RSB	
SIZE B	DWG NO:
SCALE: NONE	Wednesday, October 28, 2015
Sheet 3	of 8

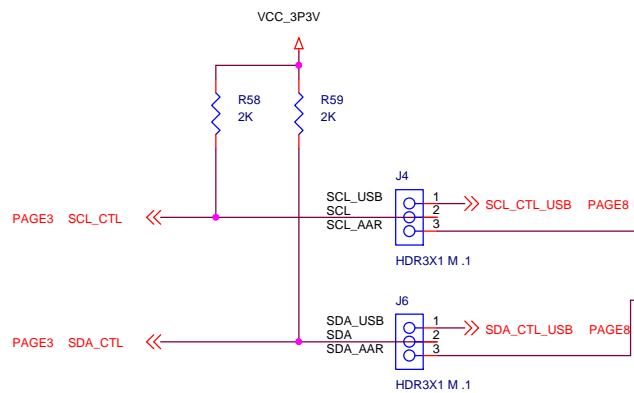
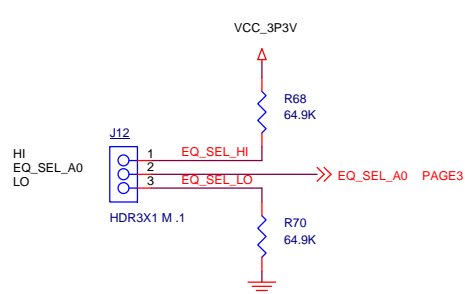
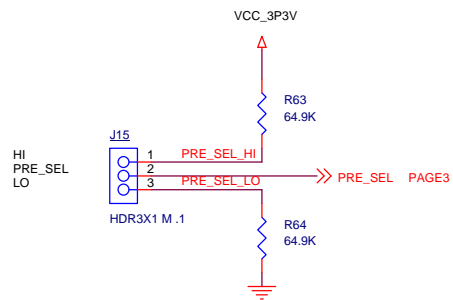
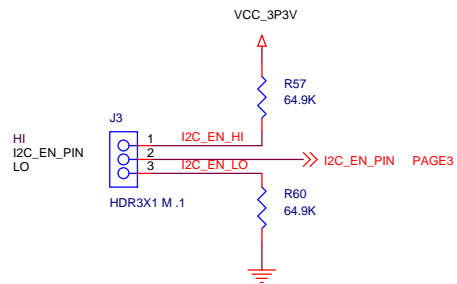
HDMI TX



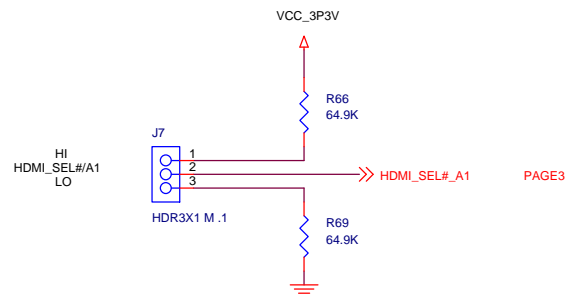
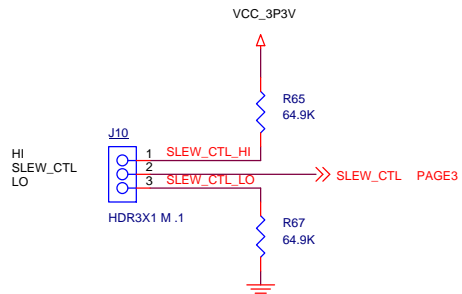
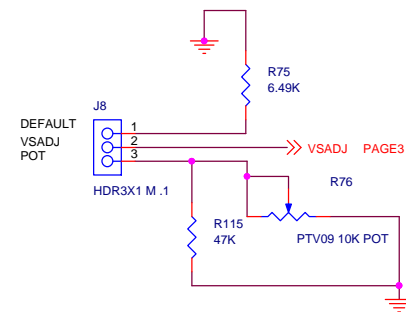
TEXAS INSTRUMENTS

DP149RSBEVM, HDMI TX CONNECTOR

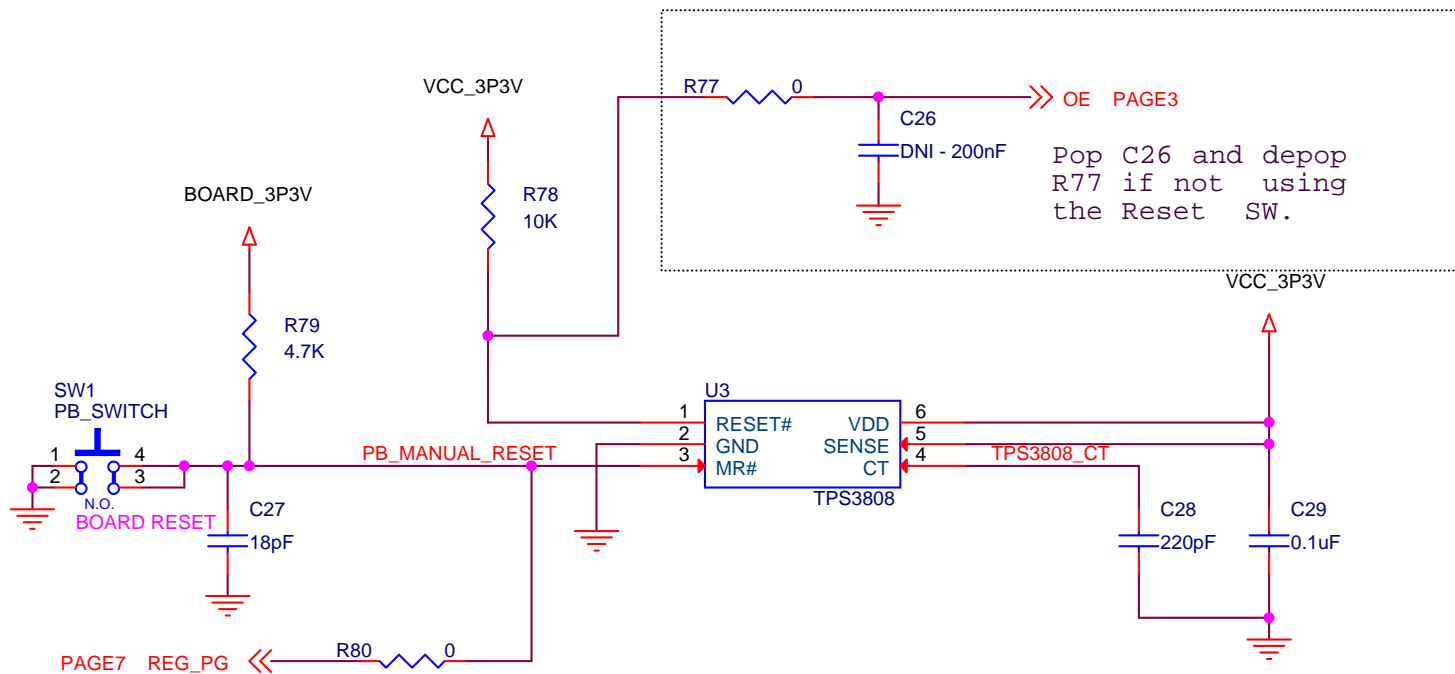
SIZE A	DWG NO:
SCALE: NONE	Wednesday, October 28, 2015
Sheet 4 of 8	




**AARDVARK
CONNECTOR**

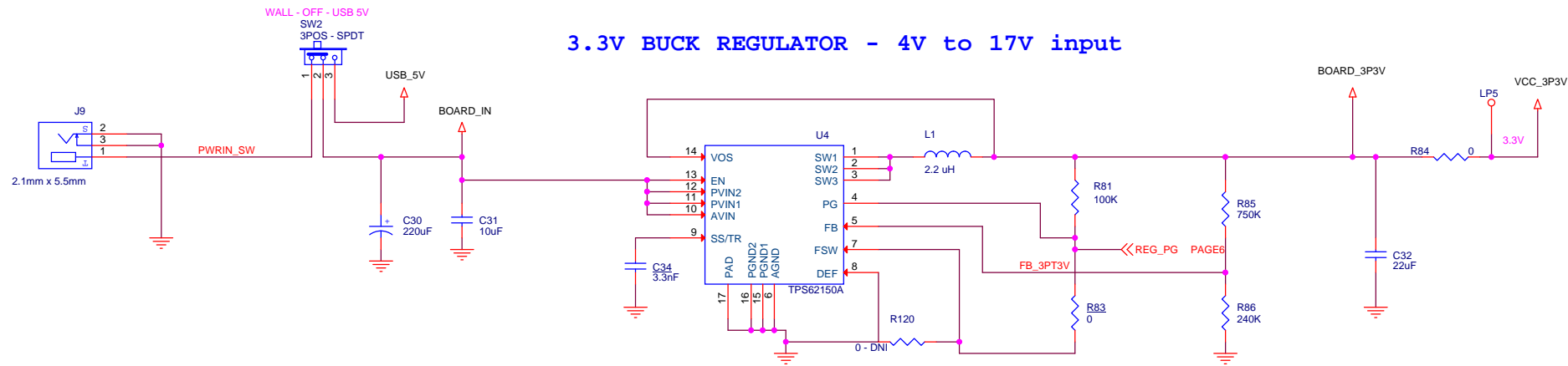


DP149RSBEVM, SELECT OPTIONS			
SIZE B	DWG NO:		
SCALE: NONE	Wednesday, October 28, 2015	Sheet 5	of 8

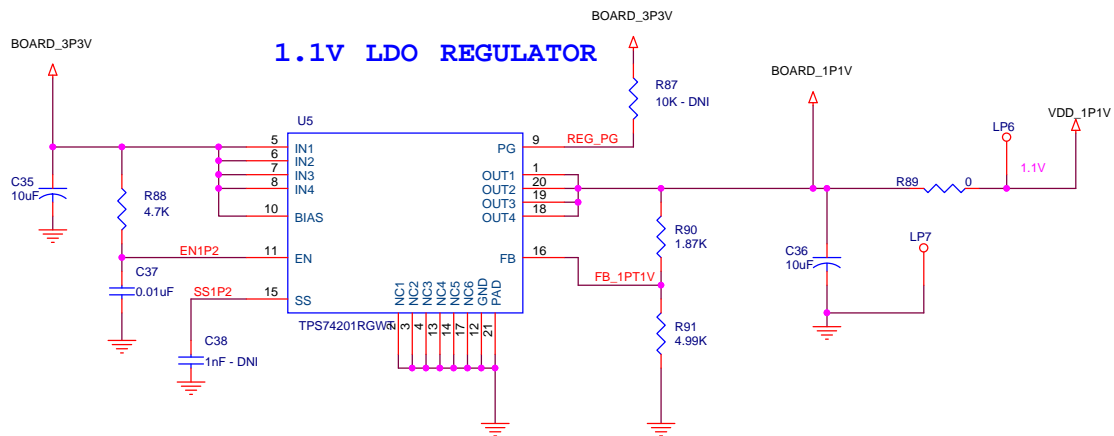


 TEXAS INSTRUMENTS	
DP149RSBEVM, RESET	
SIZE A	DWG NO:
SCALE: NONE	Wednesday, October 28, 2015
Sheet 6	of 8

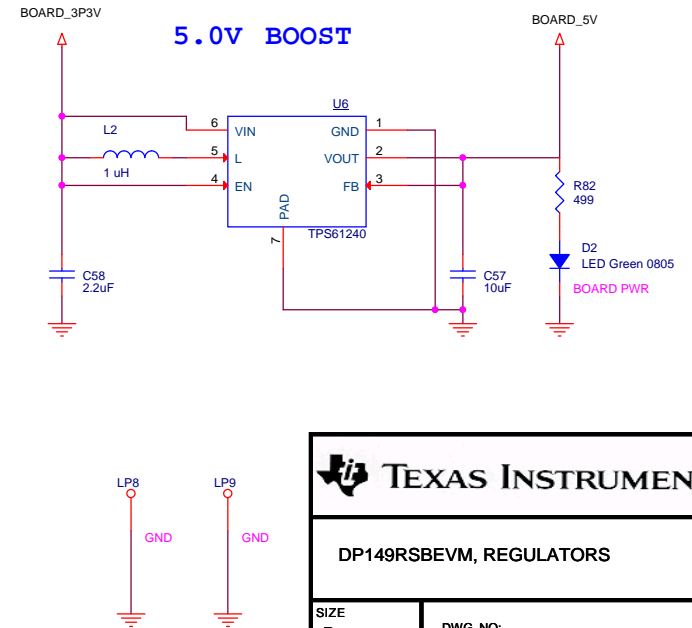
3.3V BUCK REGULATOR - 4V to 17V input



1.1V LDO REGULATOR



5.0V BOOST



DP149RSBEVM, REGULATORS	
SIZE B	DWG NO:
SCALE: NONE	Wednesday, October 28, 2015
Sheet 7 of 8	

