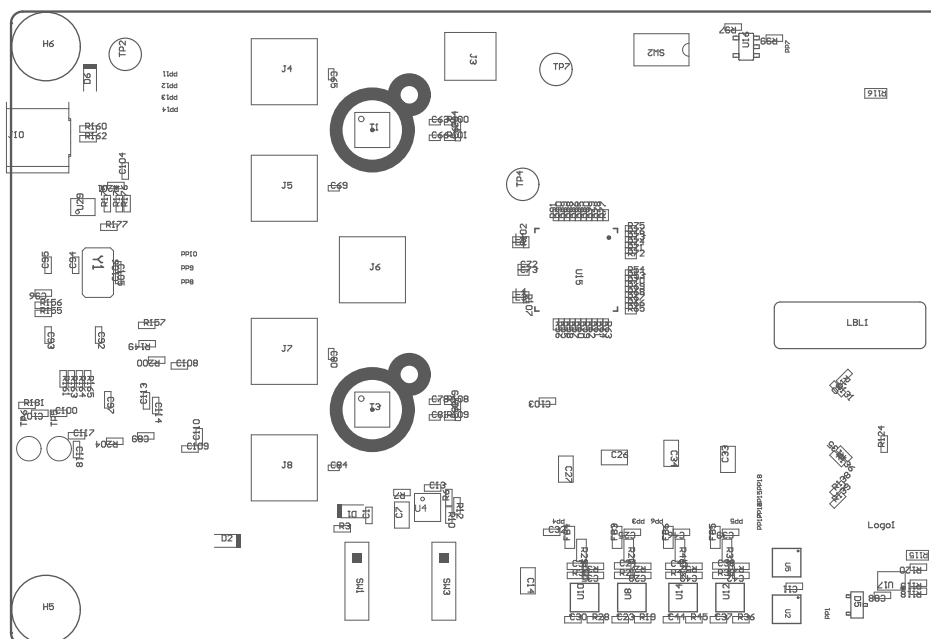


Z24 ■ These assemblies must comply with workmanship standards IPC-A-610 Class 2, unless otherwise specified.

Z23 ■ These assemblies must be clean and free from flux and all contaminants. Use of no clean flux is not acceptable.

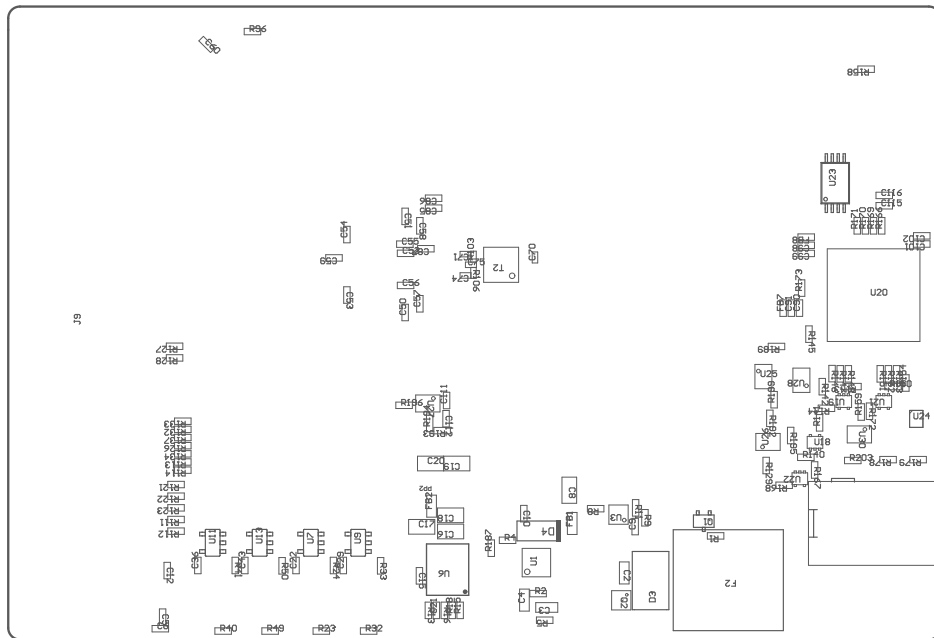
Z22 ■ These assemblies are ESD sensitive, ESD precautions shall be observed.

ZZ1 ■ Install label in silkscreened box after final wash. Text shall be 8 pt font. Text shall be per the Label Table in the PDF schematic.



COMPONENTS MARKED 'DNP' SHOULD NOT BE POPULATED.
ASSEMBLY VARIANT: 001

PCB VIEWED FROM TOP SIDE	BOARD #: DC276	REV: C	SUN REV: 1a5319a59745b3b6442724175f06a0812f21cc0f
PLOT NAME = Top Assembly Drawing	GENERATED : 10/8/2024 1:00:16 PM		TEXAS INSTRUMENTS



COMPONENTS MARKED 'DNP' SHOULD NOT BE POPULATED.
 ASSEMBLY VARIANT: 001

PCB VIEWED FROM BOTTOM SIDE	BOARD #: DC276	REV: C	SUN REV: 1a5319a59745b3b6442724175f06a0812f21cc0f
PLOT NAME = Bottom Assembly Drawing	GENERATED : 10/8/2024 1:00:16 PM	TEXAS INSTRUMENTS	