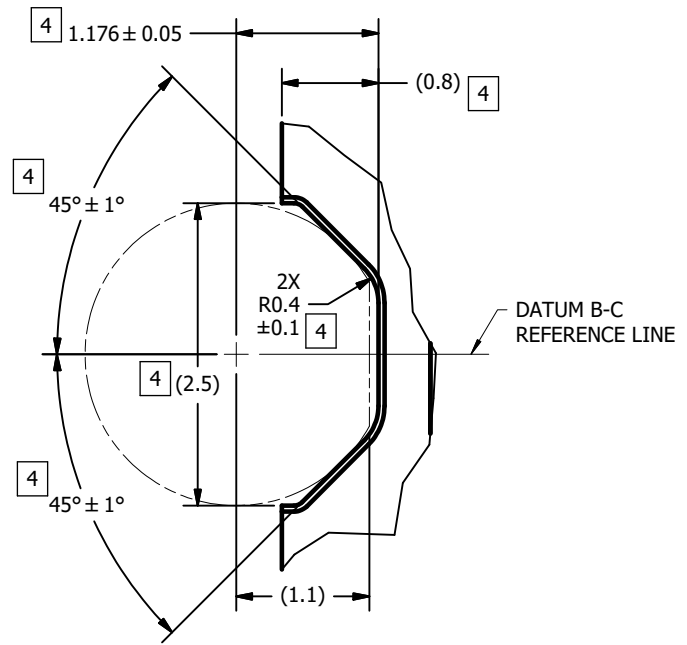


© COPYRIGHT 2024 TEXAS INSTRUMENTS
UN-PUBLISHED. ALL RIGHTS RESERVED.

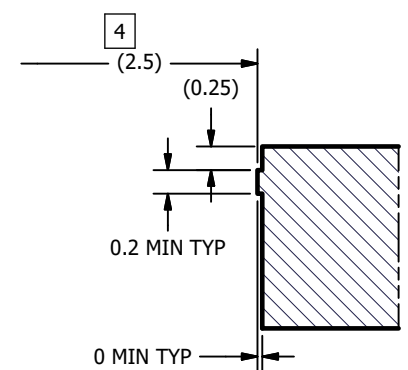
REV		DESCRIPTION	DATE	BY
A	ECO 2209009: INITIAL RELEASE		6/19/2024	BMH

NOTES UNLESS OTHERWISE SPECIFIED:

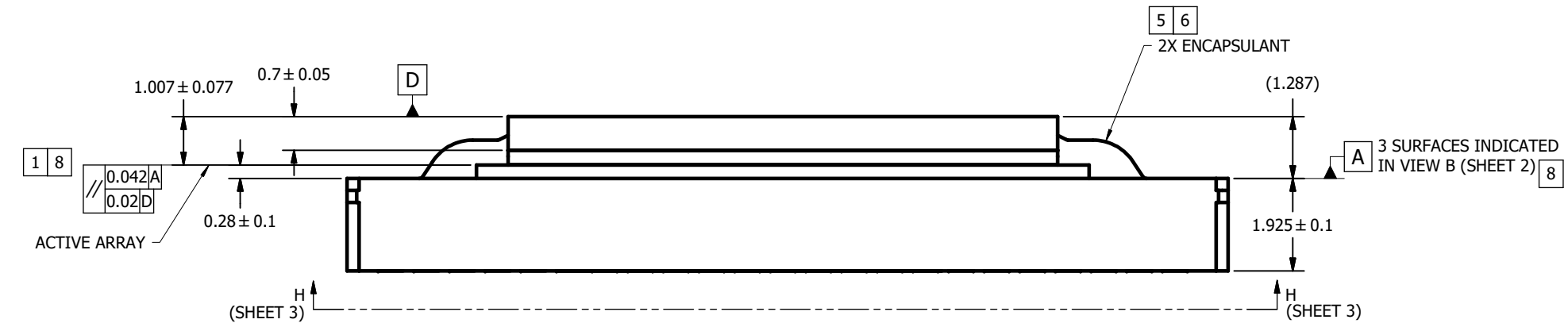
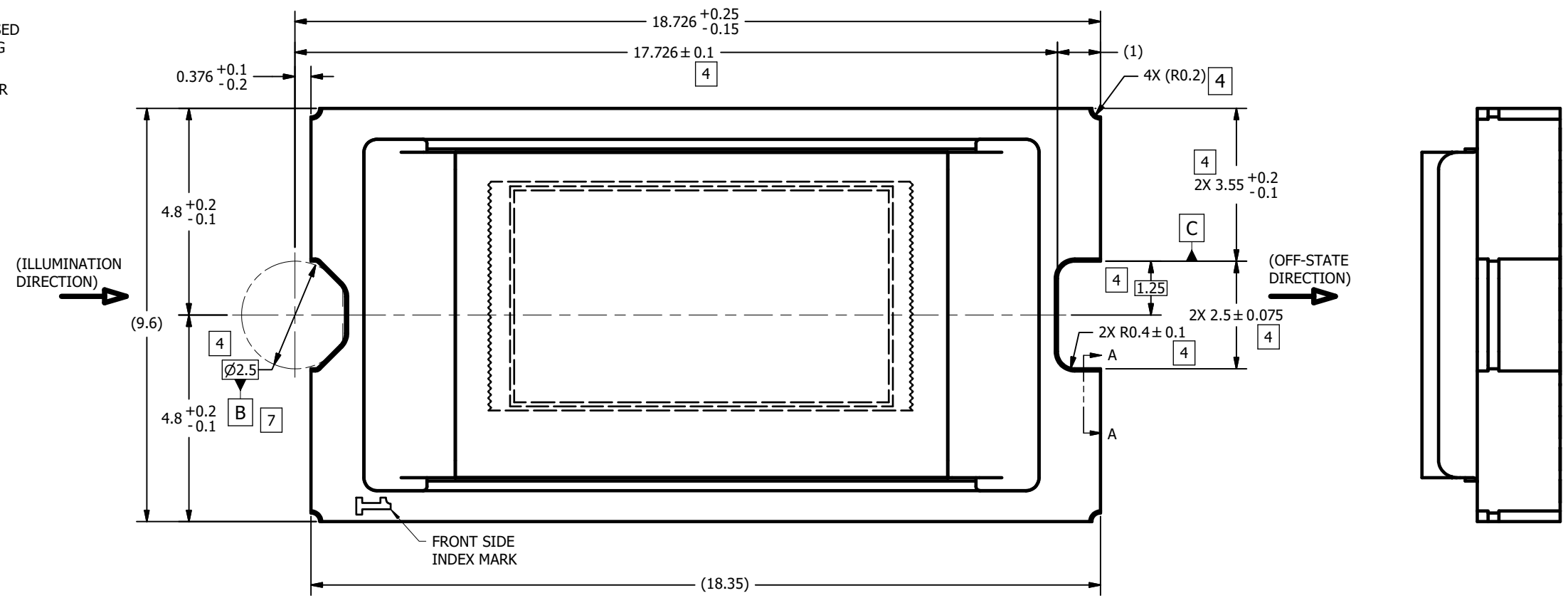
- 1 DIE PARALLELISM TOLERANCE APPLIES TO DMD ACTIVE ARRAY ONLY.
- 2 ROTATION ANGLE OF DMD ACTIVE ARRAY IS A REFINEMENT OF THE LOCATION TOLERANCE AND HAS A MAXIMUM ALLOWED VALUE OF 0.6 DEGREES.
- 3 BOUNDARY MIRRORS SURROUNDING THE DMD ACTIVE ARRAY.
- 4 NOTCH DIMENSIONS ARE DEFINED BY SECOND LAYER OF CERAMIC, AS SHOWN IN SECTION A-A.
- 5 ENCAPSULANT TO BE CONTAINED WITHIN DIMENSIONS SHOWN IN VIEW D (SHEET 3). NO ENCAPSULANT IS ALLOWED ON TOP OF THE WINDOW.
- 6 ENCAPSULANT NOT TO EXCEED THE HEIGHT OF THE WINDOW.
- 7 SEE DETAIL B FOR "V-NOTCH" DIMENSIONS.
- 8 WHILE ONLY THE THREE DATUM A TARGET AREAS A1, A2, AND A3 ARE USED FOR MEASUREMENT, ALL 4 CORNERS SHOULD BE CONTACTED, INCLUDING E1, TO SUPPORT MECHANICAL LOADS.
- 9 SHORTING TEST PADS AND SYMBOLIZATION PAD TO EACH OTHER AND/OR TO VSS IS ACCEPTABLE.



DETAIL B
V-NOTCH
SCALE 32 : 1



SECTION A-A
NOTCH OFFSETS
SCALE 25 : 1
(ROTATED 90°)



UNLESS OTHERWISE SPECIFIED		DRAWN B. HASKETT 6/19/2024		DATE 6/19/2024		TEXAS INSTRUMENTS Dallas, Texas	
● DIMENSIONS ARE IN MILLIMETERS		ENGINEER B. HASKETT 6/19/2024		QA/CE P. KONRAD 6/20/2024		TITLE ICD, MECHANICAL, DMD, .39 4K SERIES 323 (FSB PACKAGE)	
● TOLERANCES: ANGLES ± 1° 2 PLACE DECIMALS ± 0.25 1 PLACE DECIMALS ± 0.50		CM J. MCKINLEY 6/24/2024		APPROVED M. GARCIA 6/26/2024		SIZE D	
● DIMENSIONAL LIMITS APPLY BEFORE PROCEEDING		APPLICATION 0314DA		SCALE 16:1		DWG NO. 2519203	
● INTERPRET DIMENSIONS IN ACCORDANCE WITH ASME Y14.5M-1994		NEXT ASSY USED ON		REVISIONS		REV A	
● REMOVE ALL BURRS AND SHARP EDGES		THIRD ANGLE PROJECTION		SHEET 1 OF 5		DATE 6/19/2024	
● PARENTHEetical INFORMATION FOR REFERENCE ONLY		BY		BY		BY	

8

7

6

5

4

3

DWG NO. 2519203

SH 2

1

D

D

C

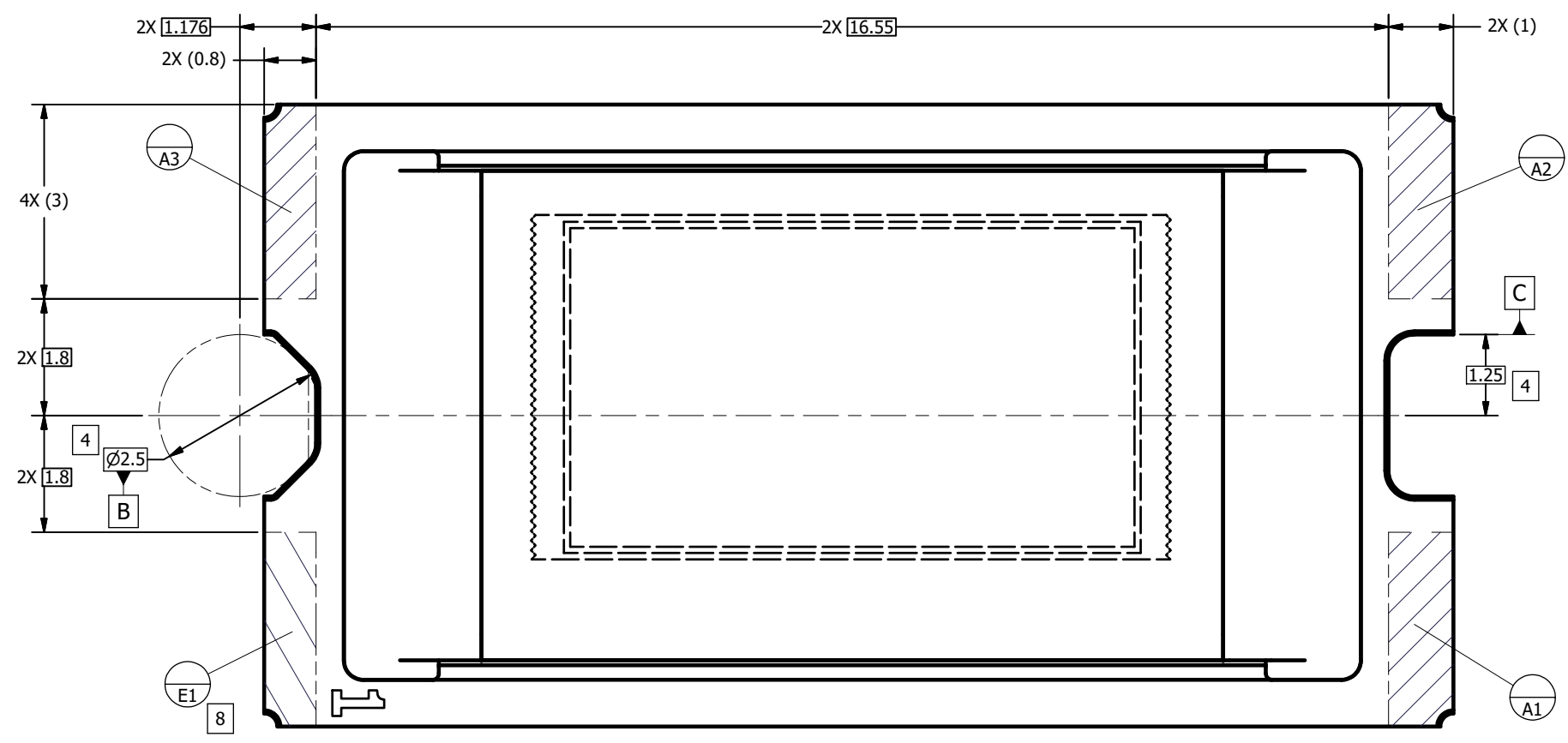
C

B

B

A

A



VIEW C
 DATUMS A AND E
 SCALE 20 : 1
 (FROM SHEET 1)



DRAWN
 B. HASKETT
 DATE
 6/19/2024

SIZE
 D

DWG NO.
 2519203

REV
 A

SHEET 2 OF 5

8

7

6

5

4

3

2

1

8

7

6

5

4

3

DWG NO. 2519203

SH 3

1

D

D

C

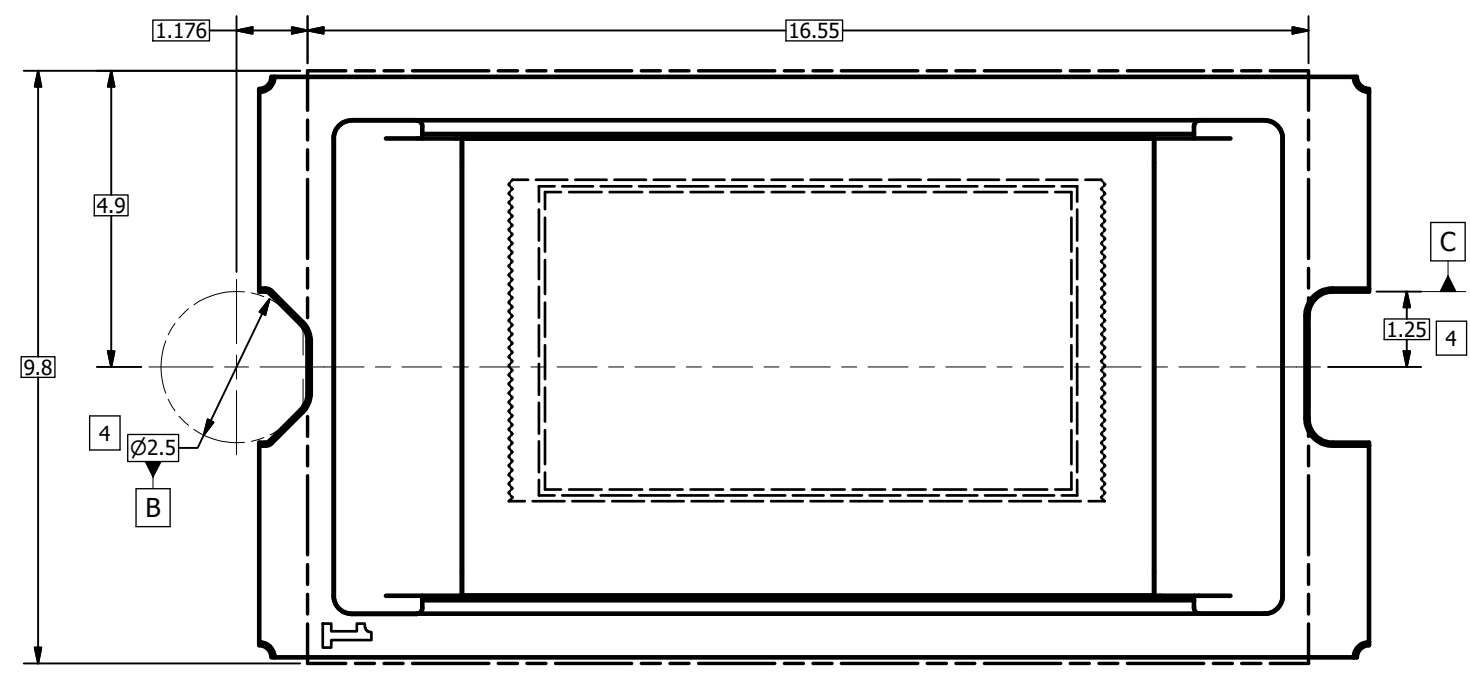
C

B

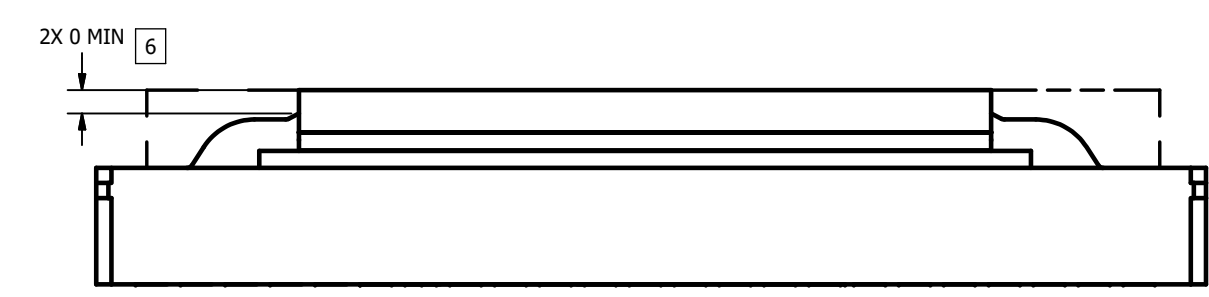
B

A

A



VIEW D
ENCAPSULANT MAXIMUM X/Y DIMENSIONS ⁵
(FROM SHEET 1)



VIEW E
ENCAPSULANT MAXIMUM HEIGHT



DRAWN
B. HASKETT

DATE
6/19/2024

SIZE
D

DWG NO.
2519203

REV
A

SCALE

SHEET 3 OF 5

8

7

6

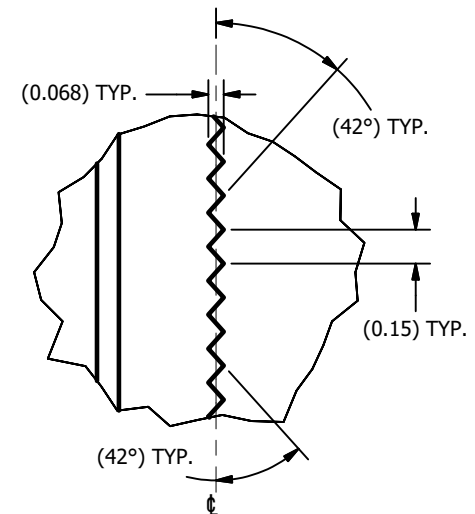
5

4

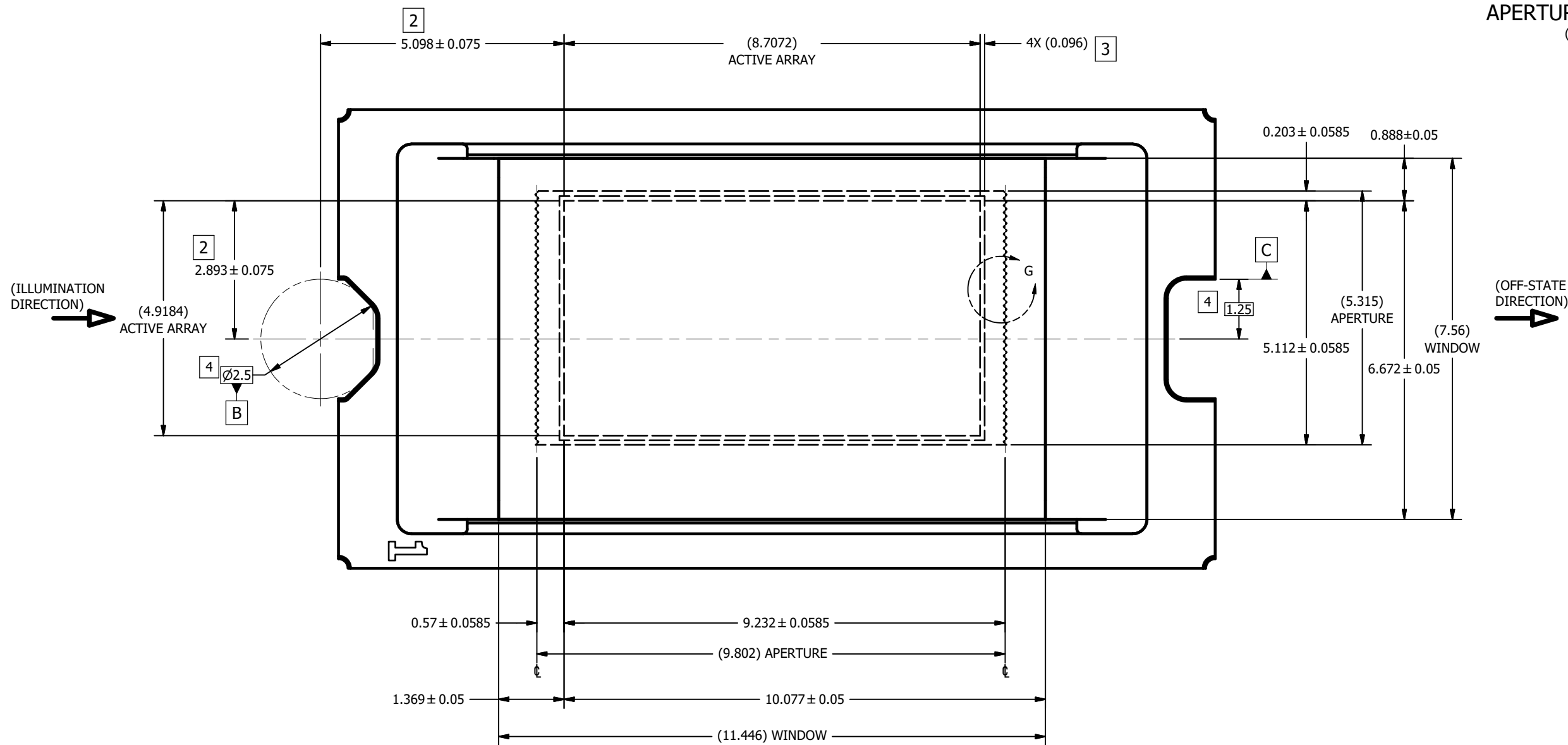
3

2

1



DETAIL G
APERTURE LEFT AND RIGHT EDGES
 (GLASS OMITTED FOR CLARITY)
 SCALE 60 : 1



VIEW F
WINDOW AND ACTIVE ARRAY
 SCALE 20 : 1
 (FROM SHEET 1)

D

D

C

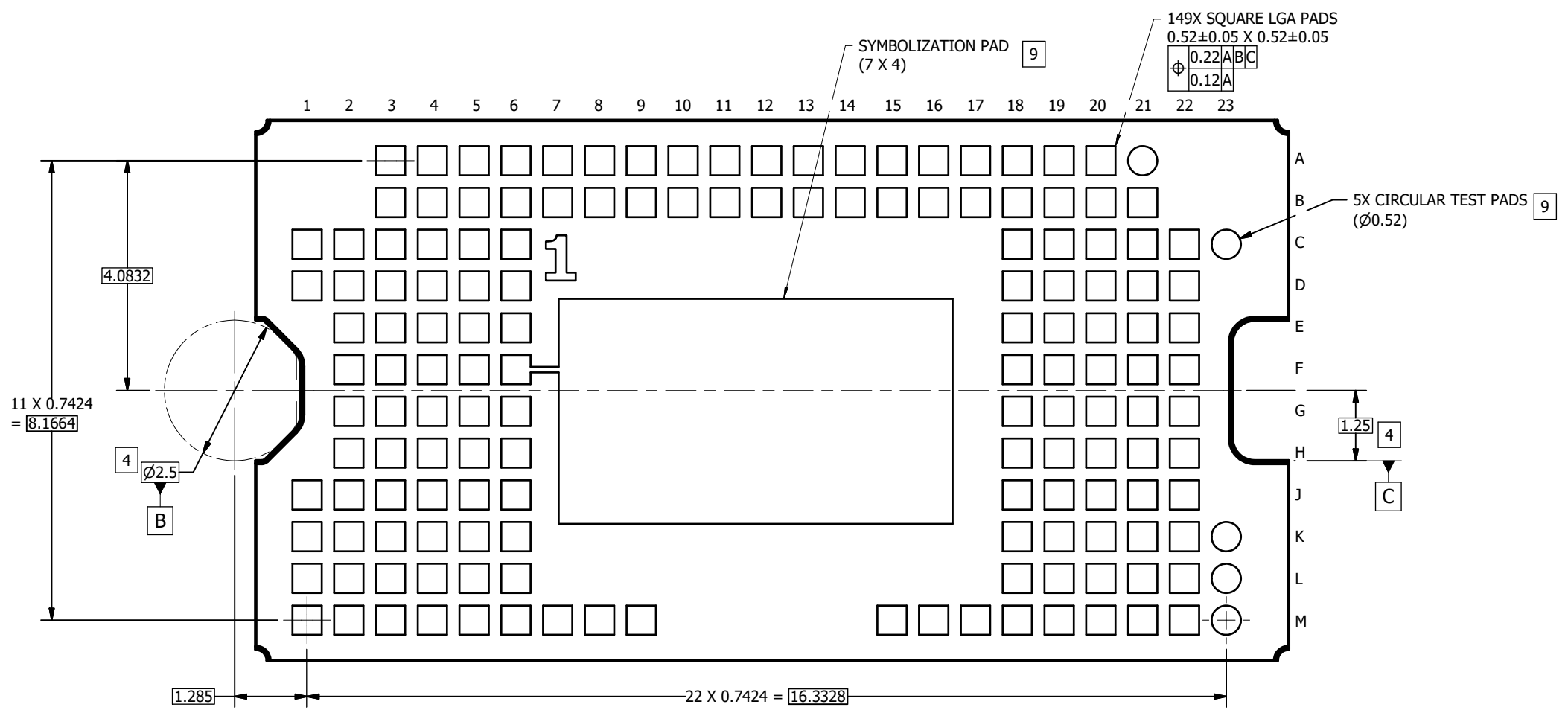
C

B

B

A

A



VIEW H-H
 BACK SIDE METALLIZATION
 SCALE 20 : 1

IMPORTANT NOTICE AND DISCLAIMER

TI PROVIDES TECHNICAL AND RELIABILITY DATA (INCLUDING DATA SHEETS), DESIGN RESOURCES (INCLUDING REFERENCE DESIGNS), APPLICATION OR OTHER DESIGN ADVICE, WEB TOOLS, SAFETY INFORMATION, AND OTHER RESOURCES "AS IS" AND WITH ALL FAULTS, AND DISCLAIMS ALL WARRANTIES, EXPRESS AND IMPLIED, INCLUDING WITHOUT LIMITATION ANY IMPLIED WARRANTIES OF MERCHANTABILITY, FITNESS FOR A PARTICULAR PURPOSE OR NON-INFRINGEMENT OF THIRD PARTY INTELLECTUAL PROPERTY RIGHTS.

These resources are intended for skilled developers designing with TI products. You are solely responsible for (1) selecting the appropriate TI products for your application, (2) designing, validating and testing your application, and (3) ensuring your application meets applicable standards, and any other safety, security, regulatory or other requirements.

These resources are subject to change without notice. TI grants you permission to use these resources only for development of an application that uses the TI products described in the resource. Other reproduction and display of these resources is prohibited. No license is granted to any other TI intellectual property right or to any third party intellectual property right. TI disclaims responsibility for, and you will fully indemnify TI and its representatives against, any claims, damages, costs, losses, and liabilities arising out of your use of these resources.

TI's products are provided subject to [TI's Terms of Sale](#) or other applicable terms available either on [ti.com](https://www.ti.com) or provided in conjunction with such TI products. TI's provision of these resources does not expand or otherwise alter TI's applicable warranties or warranty disclaimers for TI products.

TI objects to and rejects any additional or different terms you may have proposed.

Mailing Address: Texas Instruments, Post Office Box 655303, Dallas, Texas 75265
Copyright © 2024, Texas Instruments Incorporated