

ABSTRACT

This user's guide describes the characteristics, operation, and use of the TPS65219 programming board. To support NVM programming, TI offers two socketed EVMs, one for each package size. TPS65219EVM-SKT is the orderable part number for the 5x5 socketed EVM and TPS65219EVMRSM is the orderable part number for the 4x4 socketed EVM. Each of these EVMs is a fully assembly platform for programming the TPS65219 NVM memory using the onboard USB-to-I²C adapter. The PCB includes power terminals and jumpers for all DC regulator inputs and outputs, as well as test points for common measurements.

Table of Contents

1 Introduction	3
2 Requirements	3
2.1 Hardware.....	3
2.2 Software.....	3
3 TPS65219 Resources Overview	4
4 EVM Configuration	5
4.1 Configuring the USB to I ² C Adapter.....	5
4.2 Configuration Headers.....	5
4.3 Test Points.....	6
5 NVM Programming	8
5.1 TPS65219EVM-SKT default NVM settings.....	8
5.2 NVM programming in Initialize State.....	8
5.3 NVM programming in Initialize State.....	10
6 Graphical User Interface (GUI)	12
6.1 TPTS65219 EVM Debugging.....	12
6.2 I ² C Communication Port and Adapter Debugging.....	12
6.3 Getting Started.....	12
6.4 Collateral Page.....	16
6.5 Register Map Page.....	17
6.6 NVM Configuration Page.....	17
6.7 Sequence Configuration.....	19
6.8 NVM Programming Page.....	20
6.9 Additional Features.....	21
7 Schematics, PCB Layouts, and Bill of Materials	22
7.1 TPS65219EVM-SKT Schematic.....	22
7.2 TPS65219EVM-SKT PCB Layers.....	24
7.3 TPS65219EVM-RSM Schematic.....	26
7.4 TPS65219EVM-RSM PCB Layers.....	28
7.5 Bill of Materials.....	29

List of Figures

Figure 5-1. NVM Programming steps.....	9
Figure 5-2. NVM Programming steps.....	11
Figure 6-1. GUI Composer Gallery.....	12
Figure 6-2. Locating the PMIC GUI in the Gallery.....	13
Figure 6-3. GUI Software Download Options.....	13
Figure 6-4. GUI Panel Within the Gallery.....	14
Figure 6-5. PMIC GUI Desktop Application.....	15
Figure 6-6. GUI Home Page.....	16
Figure 6-7. Collateral Page.....	16

Figure 6-8. Register Map Page.....	17
Figure 6-9. NVM Configuration Page.....	18
Figure 6-10. Save/Load Register Options.....	19
Figure 6-11. Sequence Plotting Tool.....	19
Figure 6-12. NVM Programming Page.....	21
Figure 7-1. TPS65219EVM-SKT, Schematic Page 1.....	22
Figure 7-2. TPS65219EVM-SKT, Schematic Page 2.....	23
Figure 7-3. TPS65219EVM-SKT, Schematic Page 3.....	24
Figure 7-4. TPS65219EVM-SKT Top Layer.....	24
Figure 7-5. TPS65219EVM-SKT Signal Layer 1.....	24
Figure 7-6. TPS65219EVM-SKT Signal Layer 2.....	25
Figure 7-7. TPS65219EVM-SKT Signal Layer 3.....	25
Figure 7-8. TPS65219EVM-SKT Signal Layer 4.....	25
Figure 7-9. TPS65219EVM-SKT Bottom Layer.....	25
Figure 7-10. TPS65219EVM-RSM, Schematic Page 1.....	26
Figure 7-11. TPS65219EVM-RSM, Schematic Page 2.....	27
Figure 7-12. TPS65219EVM-RSM, Schematic Page 3.....	28
Figure 7-13. TPS65219EVM-RSM Top Layer.....	28
Figure 7-14. TPS65219EVM-RSM Signal Layer 1.....	28
Figure 7-15. TPS65219EVM-RSM Signal Layer 2.....	29
Figure 7-16. TPS65219EVM-RSM Signal Layer 3.....	29
Figure 7-17. TPS65219EVM-RSM Signal Layer 4.....	29
Figure 7-18. TPS65219EVM-RSM Bottom Layer.....	29

List of Tables

Table 2-1. TPS65219EVM Socket Boards.....	3
Table 3-1. TPS65219 Power Resources.....	4
Table 3-2. TPS65219 Multi-function Pins.....	4
Table 4-1. I2C pull-up supply selection (J7).....	5
Table 4-2. PMIC supply selection (J1).....	5
Table 4-3. Adapter PMIC Connections.....	5
Table 4-4. TPS65219 Configuration Headers.....	6
Table 4-5. TPS65219 EVM Test Points.....	6
Table 5-1. TPS65219EVM-SKT registers NOT configured as 0h.....	8
Table 7-1. Bill of Materials.....	29

Trademarks

Cortex™ is a trademark of Arm Ltd.

Chrome™ is a trademark of Google.

Firefox™ is a trademark of Mozilla.

Microsoft Edge™ is a trademark of Microsoft.

ARM® is a registered trademark of Arm Ltd.

All trademarks are the property of their respective owners.

1 Introduction

The TPS65219 PMIC is a highly integrated power management solution for ARM® Cortex™ A53 Processors and FPGAs. This device combines 3 step down converters and 4 low-dropout (LDO) regulators. The Buck1 step down converter can support a load current of up to 3.5A, optimal for the core rail of a processor. All 3 step down converters support non-fixed switching frequency or fixed frequency mode. LDO1 and LDO2 are configurable in both load switch and bypass-mode to support SD-Card configuration. All LDO voltage inputs can be cascaded off the step down converter outputs or use the same system power to enable maximum design and sequencing functionality. Complete with 3 GPIOs and 3 Multi-Function-Pins (MFPs), TPS65219 offers the complete package for full control of the power and sequencing of a System on Chip (SoC).

2 Requirements

2.1 Hardware

This section list the minimum hardware requirements needed to operate the EVM.

EVM

One of the TPS65219EVM socket boards listed in [Table 2-1](#):

Table 2-1. TPS65219EVM Socket Boards

Socket Board Part Number	Included PMIC	Package Size
TPS65219EVM-SKT	TPS6521905RHBR	5 mm x 5 mm
TPS65219EVM-RSM	TPS6521905RSMR	4 mm x 4 mm

Note

The socketed EVM can be used for re-programming and basic tests (For example: measuring output voltages, collecting power-up sequence waveforms, and so on) but must not be used to test specific performance parameters like load transient and efficiency because the socket pins and the layout of the socket introduce parasitic that do not represent conditions on real applications.

Host Computer

A computer with an available USB port is required to make use of the EVM software. The EVM software runs on the computer and communicates with the EVM via a USB-A to micro-B cable.

Power Supply

A 5V DC power supply is required to power the EVM when using an external supply for VSYS. The TPS65219 socketed EVM also has the option to supply VSYS with the 5V coming from the uUSB cable.

2.2 Software

TPS65219-GUI — TPS65219 graphical user interface

The [TPS65219-GUI](#) can be used in your browser or as a standalone application. This software provides a simple way to communicate with the device via I2C using the built-in USB2ANY utilizing an MSP430. For details on the GUI installation and setup process, please see [Section 6](#) of this guide. Note that the EVM can power up and operate without use of software.

3 TPS65219 Resources Overview

The TPS65219 PMIC has multiple analog and digital resources that can be configured to power different processors, FPGAs and SoCs. [Table 3-1](#) and [Table 3-2](#) summarize some of the key electrical spec specification for the analog rails, the possible supply configurations and programmable features for each regulator.

Table 3-1. TPS65219 Power Resources

	Buck1	Buck2/3	LDO1/2	LDO3/4
Input Voltage Range	2.5V to 5.5V	2.5V to 5.5V	1.5V to 5.5V	2.5V to 5.5V
Output Voltage Range	0.6V to 3.4V	0.6V to 3.4V	0.6V to 3.4V	1.2V to 3.3V
Operating Current	Maximum of 3.5A	Maximum of 2A	400mA	300mA
Current Limiting	5.7A to 6.9A	3.9A to 4.7A	600A to 900mA	400A to 900mA
Status Monitoring	UV, NEG_OC, OC, SCG, RV	UV, NEG_OC, OC, SCG, RV	UV, OC, SCG, RV	UV, OC, SCG, RV
Rail Configuration	Buck Converter	Buck Converter	LDO; load switch; bypass-mode	LDO; load switch
Short-Circuit Threshold (SCG)	220mV to 300mV	220mV to 300mV	220mV to 300mV	220mV to 300mV

TPS65219 Multi function Pins

TPS65219 has three multi-function-pins that can be configured depending on functional use. [Table 3-2](#) shows the functions available for each of these pins as well as how these functions are configured and operated.

Note: Only one of the following pins, MODE/RESET or MODE/STBY, may be configured as MODE. If both are configured as MODE, MODE/RESET takes priority and MODE/STBY is be ignored.

Table 3-2. TPS65219 Multi-function Pins

Pin Name	Pin Configuration	Operation
VSEL_SD/VSEL_DDR	VSEL_SD SD-card-IO-voltage selection	Trigger voltage change between 1.8V and register-based VLDO1 or VLDO2. Polarity is configurable.
	VSEL_DDR DDR-voltage selection	Hard-wired pull-up, pull-down, or floating. Sets VBUCK3 to 1.35V, 1.2V or register-based VBUCK3. Level-sensitive.
MODE/RESET	MODE Forces Buck converters into PWM or auto-entry in PFM-mode	Connected to SoC or hard-wired pull-up/down. Level-sensitive.
	RESET Forces a WARM or COLD reset.	Connected to SoC. WARM reset: reset output voltages to default COLD reset: sequence down all enabled rails and power up again Edge-sensitive.
MODE/STBY	MODE Forces Buck converters into PWM or auto-entry in PFM-mode	Pin-status determines the switching mode of the buck converters. Assert pin low for longer than $t_{DEGLITCH_MFP}$ to force buck regulators into PWM-mode. I ² C selection also available by writing to MODE_I2C_CTRL in MFP_1_CONFIG register.
	STBY Low power mode	Disables selected rails. Assert pin low for longer than Both MODE and STBY can be combined. Level sensitive.

4 EVM Configuration

The following sections outline how to configure the TPS65219EVM for general experimentation.

EVM Configuration

The TPS65219EVM-SKT can be configured as follows:

1. Configure regulator input supply rails for the expected application using the jumpers indicated in the "Supply Voltage Setup "
2. Configure the multi-function pins externally using the mode configuration descriptions indicated in "Multi-Function pin setup". Please note that the default configuration for regulator choice in SD or DDR voltage selection may differ for each individual NVM configuration (polarity is configurable).
3. Connect VSYS to a power supply capable of supporting the application and enable the supply. Typical supply for TPS6521905 is 5V.
4. If using a version of TPS65219 configured for First Supply Detection (FSD), the power-up sequence is executed as soon as the 5V supply is connected to VSYS.

Note

The TPS6521905 NVM comes with all the power rails disabled by default. When using this variant, an ON request must be triggered by pressing and releasing the SW1 push-button so the PMIC can detect a rising edge on the EN/PB/VSENSE pin and transition to Active state. Once in Active state, the power rails can be enabled by writing to register *ENABLE_CTRL*, address 0x02.

4.1 Configuring the USB to I²C Adapter

An onboard USB2ANY acts as a USB adapter to the PMIC. This adapter allows I²C communication to the host PC as well as GPIO assertion and fault monitoring. By default, the onboard MSP430 is powered by the 5 V from the uUSB cable and a discrete 3.3V LDO. Additional configurations are allowed by asserting jumpers J1 and J7, shown in [Table 4-1](#) and [Table 4-2](#). The onboard adapter must have power applied through a valid configuration.

Table 4-1. I²C pull-up supply selection (J7)

Jumper Pin Selection	Description
Pins 1 and 2 (Default)	External 3.3V LDO supplies the I2C pins.
Pins 3 and 4	BUCK2 output (VBUCK2) supplies the I2C pins.

Table 4-2. PMIC supply selection (J1)

Jumper Pin Selection	Description
Pins 1 and 2	VSYS supplied by external power supply (EXTPWR)
Pins 2 and 3 (Default)	VSYS supplied by 5 V from uUSB cable (5VUSB)

The following jumpers in [Table 4-3](#) connect the USB adapter to PMIC functional pins. These can be disabled to GND for flexibility.

Table 4-3. Adapter PMIC Connections

Jumper	PMIC Pin
J8	VSEL
J9	MODE/STBY
J10	MODE/RESET

4.2 Configuration Headers

The TPS65219EVM-SKT has multiple headers that can be used to change the input supply for some of the power rails. The PCB also includes headers that allows changing specific functions of the PMIC using the multi-function pins. TPS65219 Configuration Headers list all the headers and the expected configuration for each selection.

Table 4-4. TPS65219 Configuration Headers

	Header Name	Description	Configuration
J1	EXTLDO_VIN	Input voltage selection for external 3.3 V LDO	Pins 1 and 2: External LDO supplied by VSYS
			Pins 2 and 3: External LDO supplied by 5 V from USB
J2	VIN_BUCKS1&2	Buck1 and Buck2 input voltage connections	Pins 1 and 2: PVIN_B1 supplied by VSYS
			Pins 3 and 4: PVIN_B2 supplied by VSYS
J3	VIN_BUCK3	Buck3 input voltage selection	Pins 1 and 2: PVIN_B3 supplied by VSYS
			Pins 3 and 4: PVIN_B3 supplied by Buck2 output (VBUCK2)
J4	VIN_LDO1	LDO1 input voltage selection	Pins 1 and 2: PVIN_LDO1 supplied by VSYS
			Pins 3 and 4: PVIN_LDO1 supplied by BUCK2 output (VBUCK2)
J5	VIN_LDO2	LDO2 input voltage selection	Pins 1 and 2: PVIN_LDO2 supplied by VSYS
			Pins 3 and 4: PVIN_LDO2 supplied by BUCK2 output (VBUCK2)
J6	VIN_LDO34	LDO3/LDO4 input voltage selection	Pins 1 and 2: PVIN_LDO34 supplied by VSYS
			Pins 3 and 4: PVIN_LDO34 supplied by BUCK2 output (VBUCK2)
J7	I2C_SELECT	Pull-up supply for I2C pins	Pins 1 and 2: External 3.3 V LDO used for I2C pull-up supply
			Pins 3 and 4: BUCK2 output used for I2C pull-up supply
J8	VSEL	High/Low selection for VSEL_SD/VSEL_DDR pin	Pins 1 and 2: VSEL_SD/VSEL_DDR pin pulled high (3.3 V)
			Pins 2 and 3: VSEL_SD/VSEL_DDR pulled down
J9	MODE/STBY	High/Low selection for MODE/STBY pin	Pins 1 and 2: MODE/STBY pin pulled high (3.3 V)
			Pins 2 and 3: MODE/STBY pin pulled down
J10	MODE/RESET	High/Low selection for MODE/RESET	Pins 1 and 2: MODE/RESET pin pulled high (3.3 V)
			Pins 2 and 3: MODE/RESET pin pulled low
J14	GND	GND connection	N/A
J15	GND	GND connection	N/A

4.3 Test Points

The TPS65219EVM-SKT EVM contains 46 test points for various measurements. Trace assignments to the test points are shown in TPS65219 EVM Test Points. For reference, TPS65219 EVM Test Points demonstrates the test point locations on the EVM.

Table 4-5. TPS65219 EVM Test Points

Test Point Number	Associated Trace
TP1	EXTPWR
TP2	GND
TP3	GPIO
TP4	GPO1
TP5	TP_PB
TP6	GPO2
TP7	nINT

Table 4-5. TPS65219 EVM Test Points (continued)

Test Point Number	Associated Trace
TP8	nRSTOUT
TP9-20	GND
TP21	MCU3V3
TP22-23	GND
TP27	VDD1P8
TP28	VSEL_SD/VSEL_DDR
TP29	LDO 1 Output
TP30	LDO 2 Output
TP31	Buck 1 Output
TP32	Buck 2 Output
TP33	Buck 3 Output
TP34	MODE/STBY
TP35	LDO 1 Output SENSE
TP36	LDO 2 Output SENSE
TP37	Buck 1 Output SENSE
TP38	Buck 2 Output SENSE
TP39	Buck 3 Output SENSE
TP40	MODE/RESET
TP41	LDO 3 Output
TP42	LDO 4 Output
TP43	LDO 3 Output SENSE
TP44	LDO 4 Output SENSE
TP45	SDA
TP46	SCL
TP47	GND
TP50	USB_5V

5 NVM Programming

The TPS65219EVM-SKT is part of Texas Instruments user-programmable PMICs. This device integrates a NVM memory that provides the ability to configure the power and digital resources. The NVM programming feature makes the TPS65219EVM-SKT PMIC a flexible power solution to meet the requirements from different processors and SoCs. Programmable NVM fields include output voltages, sequencing, monitoring thresholds, GPIO control among others. OTA (Over The Air) programming, where EEPROM can be change directly without changing register settings, is not supported. Re-programming the NVM is done by first writing to the register map through the serial interface (I2C) and then saving the register settings into the NVM. The EEPROM of a device can only be programmed up to 1000 times. EEPROM values can only be changed if the input voltage (V_{SY}) is equal or greater than 3.3 V. The I2C pins must be pulled up to a 3.3V supply. At a high level, the programming flow can be described in three steps: determine your system requirements, update the register settings, save the new values into the NVM memory. Detailed information regarding the programming of the non-volatile memory is available in the *TPS65219 NVM Programming Guide* located under Technical documentation in the TPS65219EVM-SKT product page on ti.com.

Note

Writing 0x0A to register address 0x34 commits the current register settings to NVM memory so they become the new power-up defaults. Customer programmable registers correspond to addresses 0x0 to 0x27. Only bits marked with (X) in the reset column of the register map have EEPROM programmable default settings. All other bits keep the factory settings listed in the register map.

5.1 TPS65219EVM-SKT default NVM settings

The user-programmable variant comes with all Bucks, LDOs and GPIOs disabled by default and the corresponding output voltage registers set to the lowest values. All the NVM register settings are configured as 0h except the ones listed in the table below.

Table 5-1. TPS65219EVM-SKT registers NOT configured as 0h

Register Address	Bits	Field Name	Value
0x01	7-0	TI_NVM_ID	0x05
0x04	7	LDO4_SLOW_PU_RAMP	0x1
0x05	7	LDO3_SLOW_PU_RAMP	0x1
0x08	7	BUCK3_BW_SEL	0x1
0x09	7	BUCK2_BW_SEL	0x1
0x0A	7	BUCK1_BW_SEL	0x1
0x20	5-4	EN_PB_VSENSE_CONFIG	0x1
0x25	7	MASK_INT_FOR_PB	0x1
0x26	6-0	I2C_ADDRESS	0x30

5.2 NVM programming in Initialize State

NVM programming can be done in Initialize or Active state. The current state can be read from STATE bits (bits 4-3) in POWER_UP_STATUS_REG register. After a valid supply is connected to V_{SY}, the device goes to Initialize state and loads the default NVM content into the register map. Loading the NVM content takes approximately 2.3ms. Once register map is loaded with the default settings, PMIC is ready for NVM programming. [Figure 5-1](#) shows the steps required to reprogram the NVM in Initialize state while the PMIC rails are OFF. The process starts with enabling the oscillator for I2C communication. This command also disables the rails active discharge. Then, update the NVM register fields and save the new settings into the memory. Several register settings are available to indicate the status of an I2C command. For example, Register field *CUST_PROG_DONE* (bit 5, address 0x34) indicates the status of the NVM programming after *CUST_PROG_CMD* is executed. Similarly, register field *CUST_NVM_VERIFY_DONE* (bit 6, address 0x34) indicates the status (not the result) of the NVM verification after *CUST_NVM_VERIFY_CMD* is executed.

Note

For in-circuit programming, it is recommended to temporarily disconnect the PMIC rail from the I2C lines while using an external 3.3V to re-program the NVM. Since regulators are disabled in Initialize state, their active discharge is enabled. This active discharge feature can dissipate power from the external 3.3V supply if it is sharing the same voltage node with a PMIC rail. If disconnecting the PMIC rail is not an option, then the EN_OSC_DIY command must be send immediately (within ~10 seconds) after the 3.3V VIO is supplied in Initialize state. Discharge is disabled after the EN_OSC_DIY command is received.

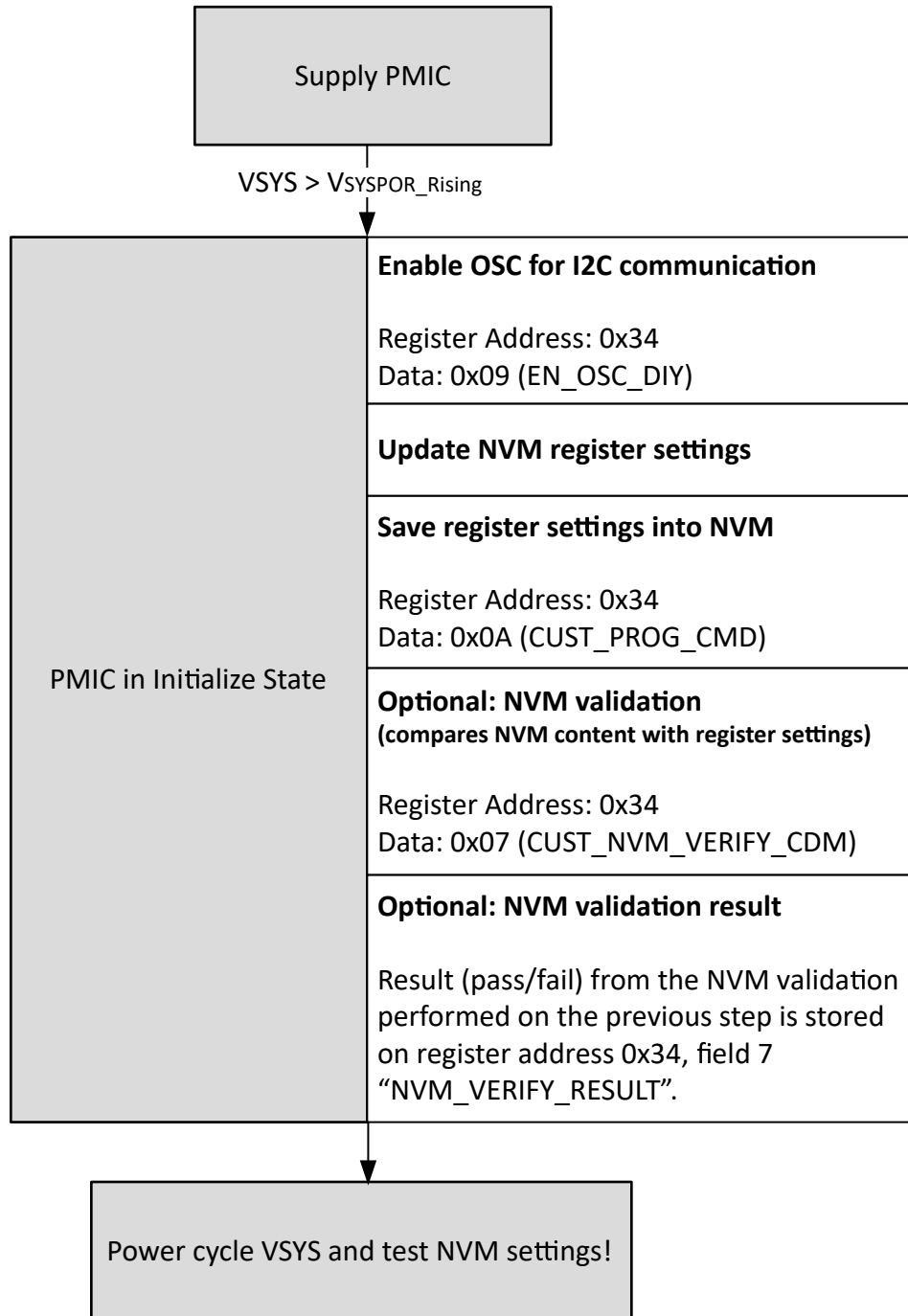


Figure 5-1. NVM Programming steps

5.3 NVM programming in Initialize State

NVM programming can be done in Initialize or Active state. The current state can be read from STATE bits (bits 4-3) in POWER_UP_STATUS_REG register. After a valid supply is connected to VSYS, the device goes to Initialize state and loads the default NVM content into the register map. Loading the NVM content takes approximately 2.3ms. Once register map is loaded with the default settings, PMIC is ready for NVM programming. [Figure 5-2](#) shows the steps required to reprogram the NVM in Initialize state while the PMIC rails are OFF. The process starts with enabling the oscillator for I2C communication. This command also disables the rails active discharge. Then, update the NVM register fields and save the new settings into the memory. Several register settings are available to indicate the status of an I2C command. For example, Register field *CUST_PROG_DONE* (bit 5, address 0x34) indicates the status of the NVM programming after *CUST_PROG_CMD* is executed. Similarly, register field *CUST_NVM_VERIFY_DONE* (bit 6, address 0x34) indicates the status (not the result) of the NVM verification after *CUST_NVM_VERIFY_CMD* is executed.

Note

For in-circuit programming, it is recommended to temporarily disconnect the PMIC rail from the I2C lines while using an external 3.3V to re-program the NVM. Since regulators are disabled in Initialize state, their active discharge is enabled. This active discharge feature can dissipate power from the external 3.3V supply if it is sharing the same voltage node with a PMIC rail. If disconnecting the PMIC rail is not an option, then the EN_OSC_DIY command must be send immediately (within ~10 seconds) after the 3.3V VIO is supplied in Initialize state. Discharge is disabled after the EN_OSC_DIY command is received.

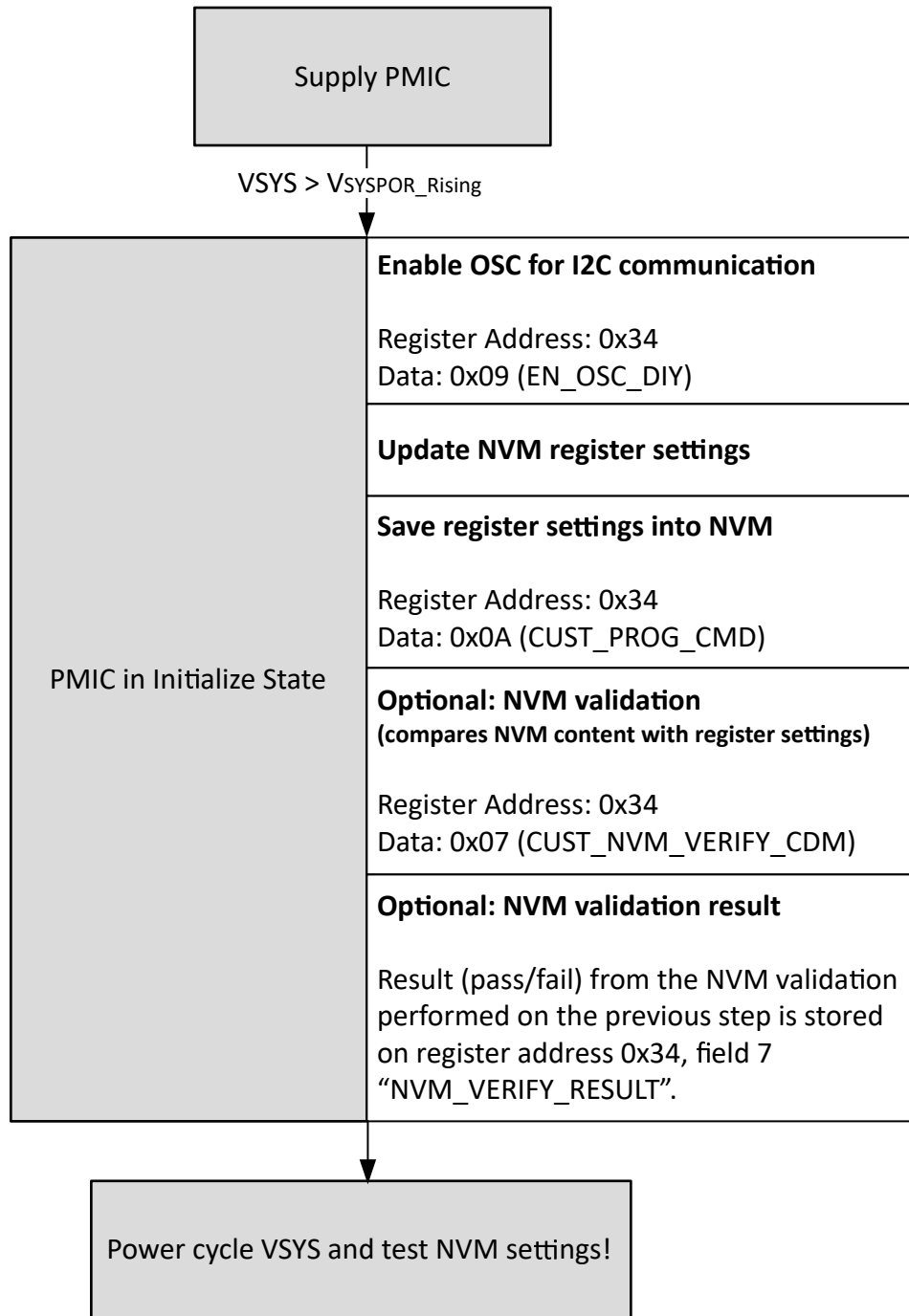


Figure 5-2. NVM Programming steps

6 Graphical User Interface (GUI)

This section covers the usage and capabilities of the [TPS65219 / TPS65220 Graphical User Interface \(GUI\)](#) tool from Texas Instruments.

6.1 TPTS65219 EVM Debugging

Refer to Figure XYZ to debug potential issues while using the TPS65219EVM.

6.2 I²C Communication Port and Adapter Debugging

By default, the GUI recognize two serial ports from the EVM adapter, but may not select the I²C bridge automatically. Once the EVM is powered and the USB cable is connected to the computer, click the connect icon at the bottom left of the GUI. If the bottom notification updates to *Hardware Not Selected*:

6.3 Getting Started

Getting started involves the following steps:

1. Find the GUI within the Gallery
2. Download the required software
 - a. GUI composer Runtime for running the GUI from a web browser
 - b. An offline copy of the GUI
3. Launch the GUI

6.3.1 Finding the GUI

The PMIC GUI is based upon GUI Composer which is compatible with either Chrome™ (version 46+) or Firefox™ (version 38+). The Chrome™ web browser is recommended and used throughout this document for demonstration. The PMIC GUI is also compatible with Microsoft Edge™ (as of version 111.0.1661.41). The GUI is found through the TI Development tools at [TI DevTools page](#). Navigating to the Gallery from the Tools tab, highlighted in blue in [Figure 6-1](#), is one way to enter the Gallery.

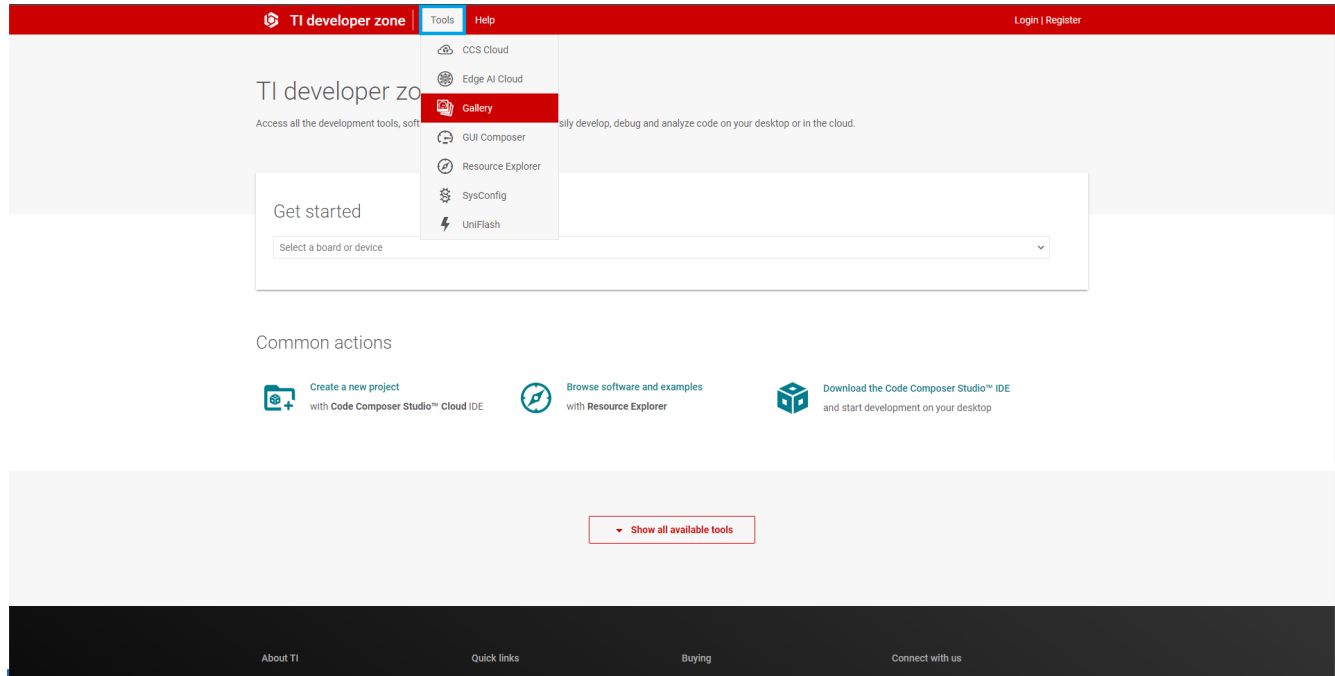


Figure 6-1. GUI Composer Gallery

In the gallery, locate the TPS65219_GUI panel shown in [Figure 6-2](#) by using the search bar and entering TPS65219_GUI.

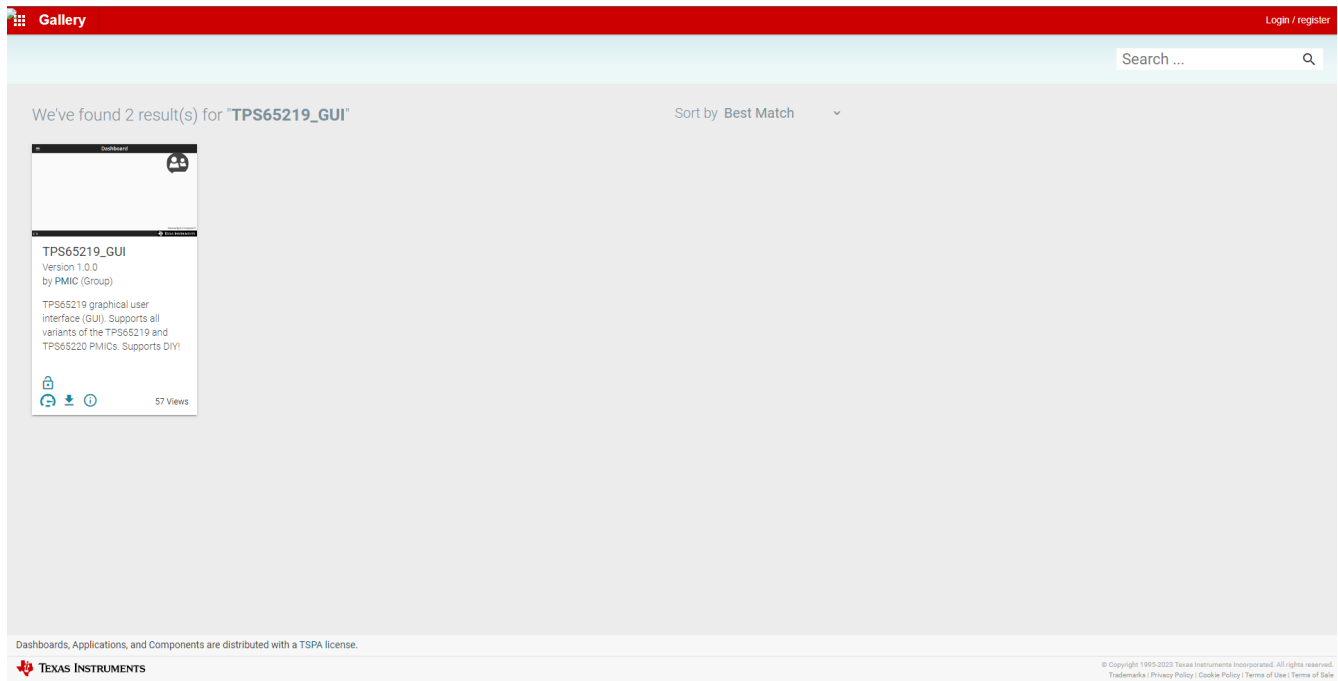


Figure 6-2. Locating the PMIC GUI in the Gallery

6.3.2 Downloading the Required Software

Both the standalone GUI and the GUI Composer Runtime are available from the PMIC panel. Again, the GUI Composer Runtime enables the GUI to be run through a web browser but requires an internet connection to be able to run the GUI. By contrast, the standalone GUI is much larger but does not require an internet connection.

The download options are found in the pop-up window, as shown in [Figure 6-3](#), when the cursor is placed on the download icon. The upper three options offer a standalone download for the appropriate operating system, while the lower three are for the GUI Composer Runtime.

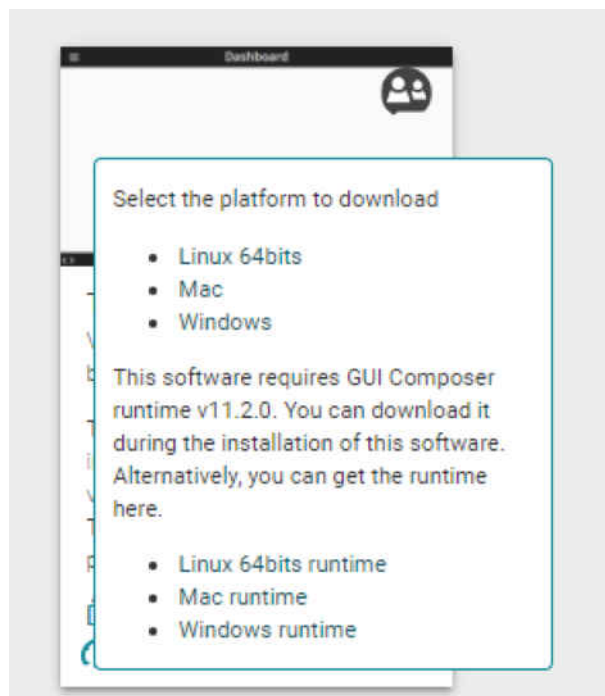


Figure 6-3. GUI Software Download Options

6.3.3 Launching the GUI

After the appropriate software has been downloaded, the GUI can be launched locally from the PC application or from the TI Cloud using the Gallery. To use the TI Cloud version of the GUI, simply click anywhere in the panel, shown in [Figure 6-4](#), that is not associated with the download or information icons.

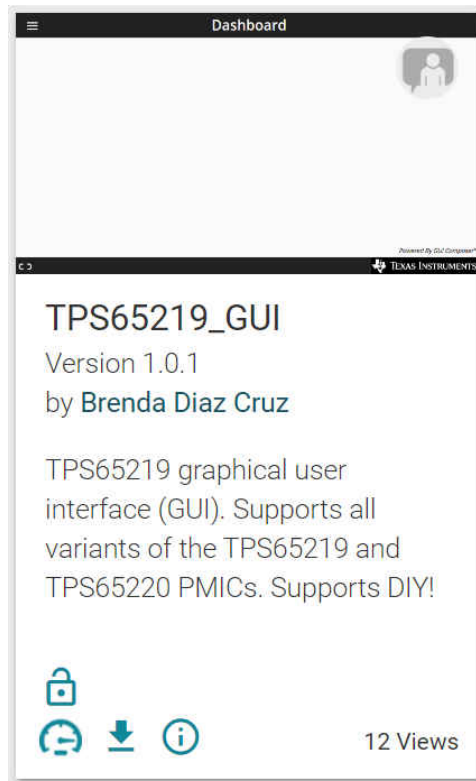


Figure 6-4. GUI Panel Within the Gallery

[Figure 6-5](#) shows an example of the PC application.

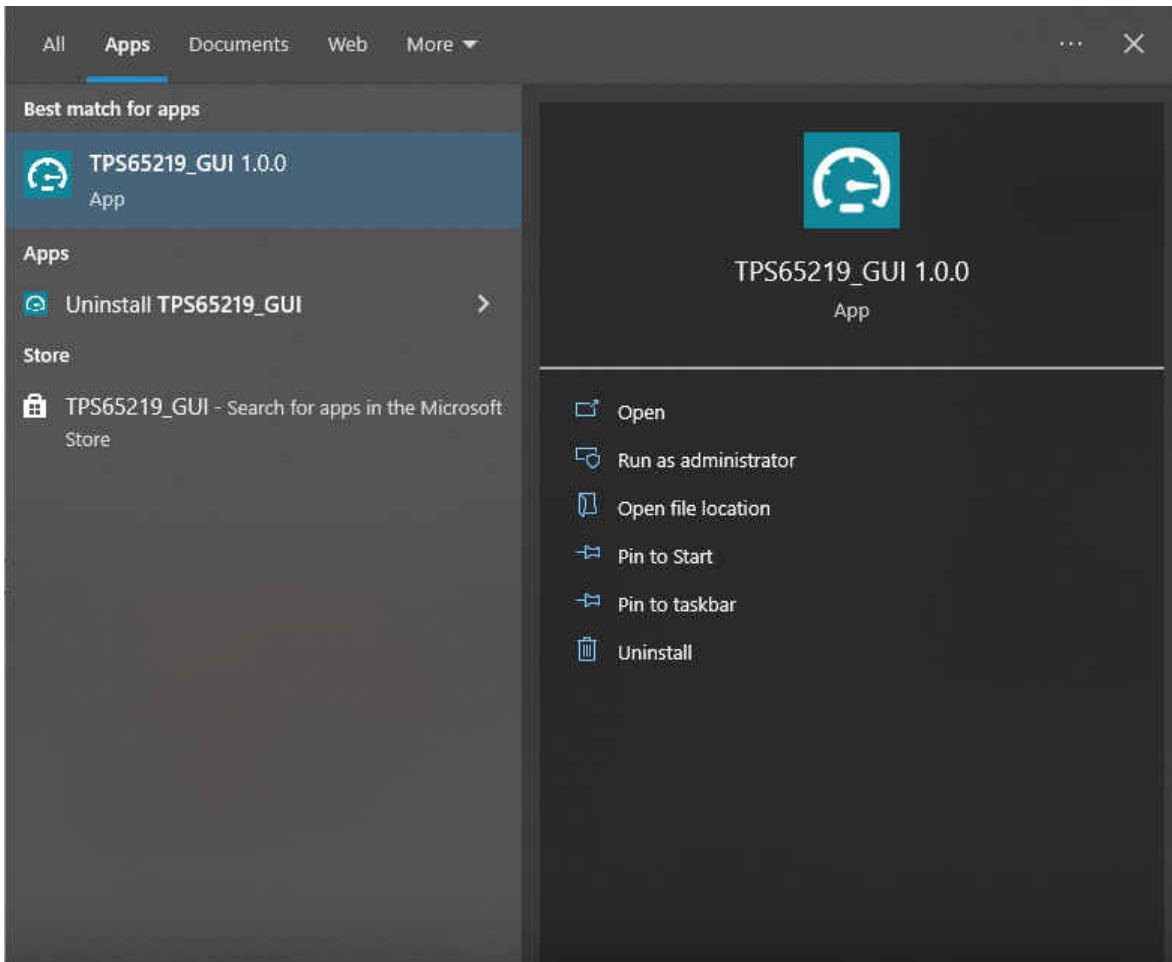


Figure 6-5. PMIC GUI Desktop Application

6.3.4 Connecting to the EVM

The README text box helps you connect the EVM board to your computer. If you want to see the README again, you may access it from the *Help* tab in the top left of the GUI dashboard. Here you also find an *About* option for information about the GUI version and additional documentation.

After you have dismissed the README message box, the GUI displays the Home page, shown in [Figure 6-6](#). Here you can see an overview of the TPS65219 power structure. The branching sections show what the alternate versions of the TPS65xxx family have to offer for your design.

At the bottom of the Home page you may navigate to the other GUI pages which are described in the subsequent sections. These pages can also be found on the left side of the GUI interface.

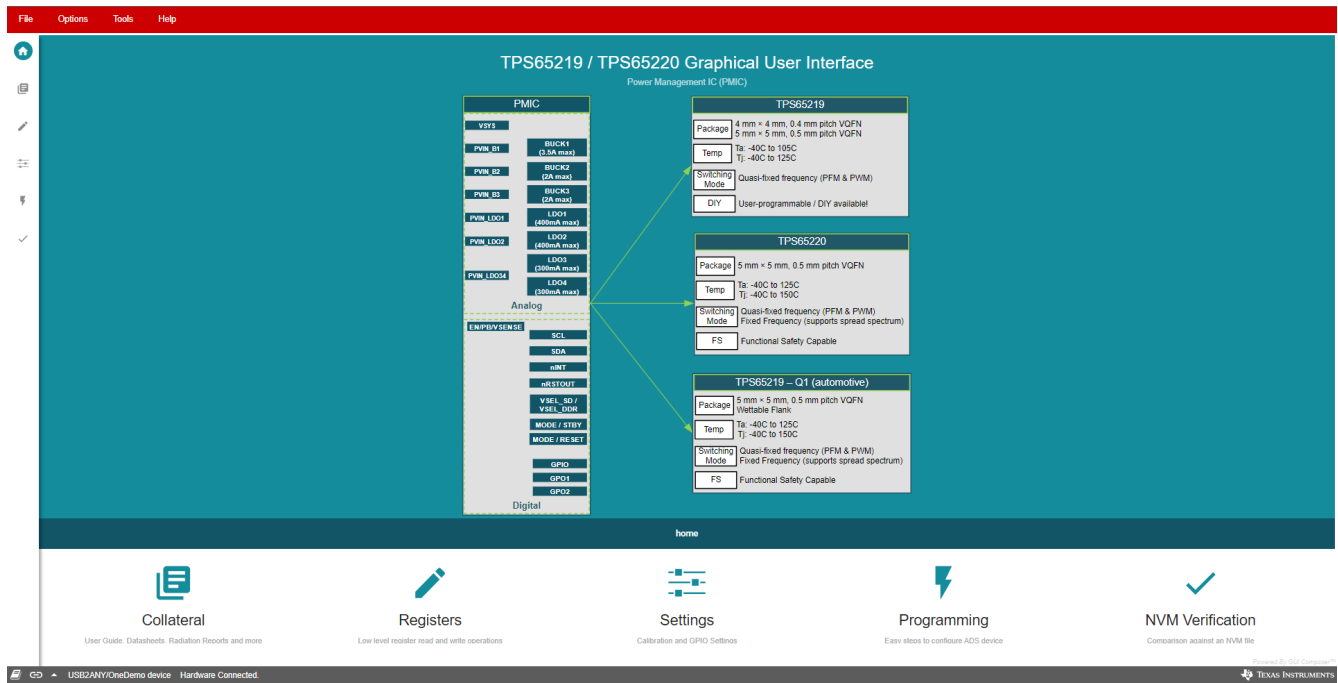


Figure 6-6. GUI Home Page

6.4 Collateral Page

The Collateral page, shown in Figure 6-7, contains relevant documentation for using the TPS65219 or TPS65220 PMICs. Here you can find a link to the EVM User's Guide, Data sheets, Application notes for processor power designs, and a tool for efficiency and thermal estimation.

At the bottom of the page, there is a link to our E2E forums for technical questions about the GUI or PMIC.

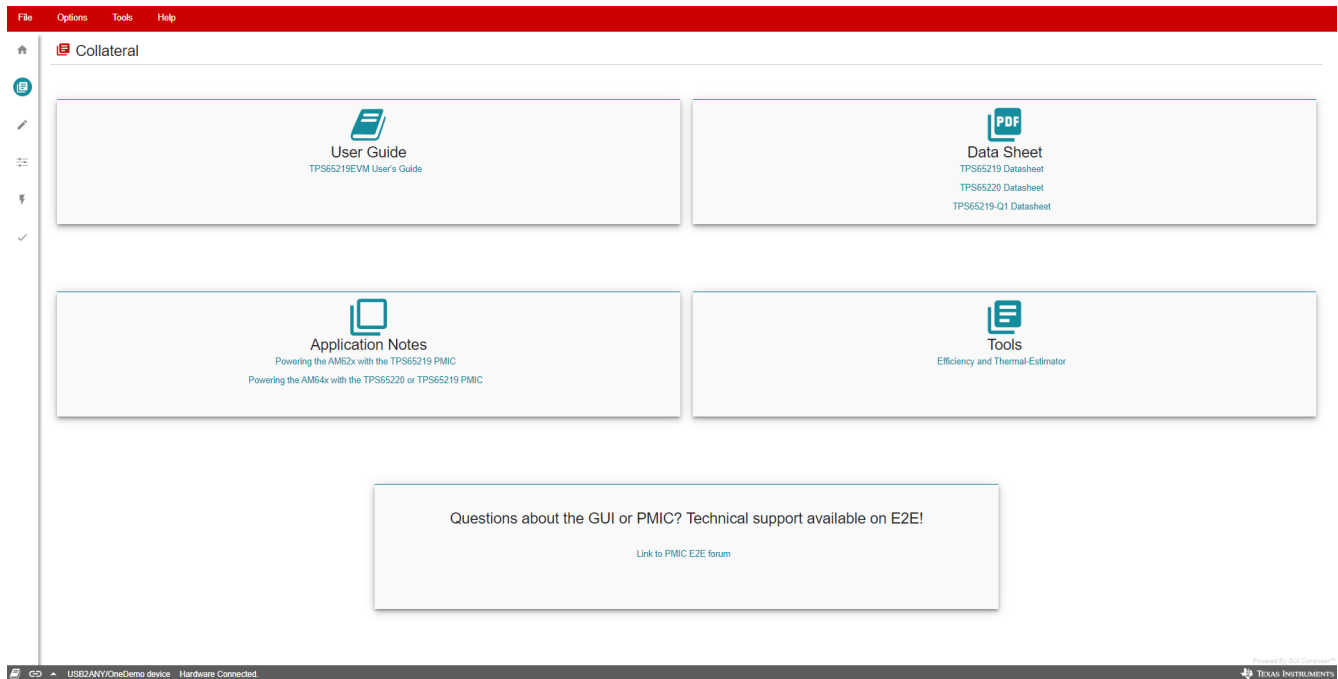


Figure 6-7. Collateral Page

6.5 Register Map Page

The Register Map page (shown in [Figure 6-8](#)) lists the different registers available for configuration and is intended for direct reads and writes to the PMIC registers. Reading and writing registers can be done individually or all at once. An Auto Read feature can be enabled by using the drop-down menu next to the **READ ALL REGISTERS** button to select an automatic read timing. Use the search bar at the top of the page to search registers by name or address.

The first three columns under the search bar show the name of each register, followed by its hexadecimal address and data value. The *Bits* column contains the bit values for each register and can be hidden by unchecking the **Show Bits** box at the top of the page, under the **READ ALL REGISTERS** button. Double-clicking a bit in this section changes the bit value.

The Field View section on the right side of the page shows register bits grouped by their respective control blocks. You may click on any bit field box to see the corresponding bits highlighted in yellow in the *Bits* column. Each field has a name shown by the blue text at the top of each box. These names can be found using the search bar by checking the **Search Bitfields** box (next to **Show Bits**).

In the *Immediate Write* mode (drop-down option located at the top right of the page), write buttons are greyed out since individual registers are written immediately with each change in the Field View, change in bits, or change in hexadecimal value. In *Deferred Write* mode, the writing of a single register or all registers is deferred until the **WRITE REGISTER** or **WRITE ALL REGISTERS** button is selected.

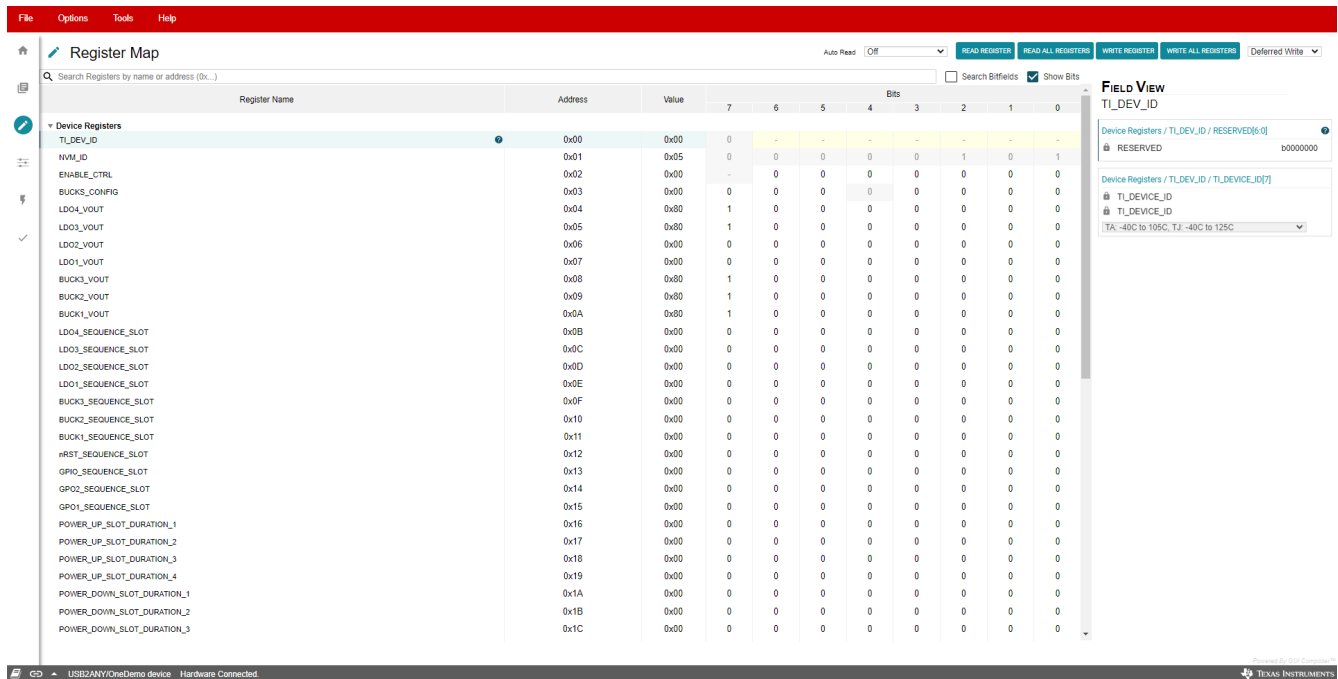


Figure 6-8. Register Map Page

Note

Although visible from the Register Map, not all registers can be edited from this page. Attempting a write to a read-only register does not generate an error. Since each write is comes with an associated read, the Register Map display is updated to reflect that the bits were not changed by the write attempt.

6.6 NVM Configuration Page

The NVM Configuration page (shown in [Figure 6-9](#)) is the main feature of the GUI and highlights the configurability of the PMIC. On this page, register fields are grouped according to their use case and are labeled to indicate which part of the PMIC is controlled by each block. The NVM configuration page also provides the

interface to save a custom configuration or load an existing configuration into the NVM of the target device. A full register read can be done using the **READ ALL REGISTERS** button in the top left of the page.

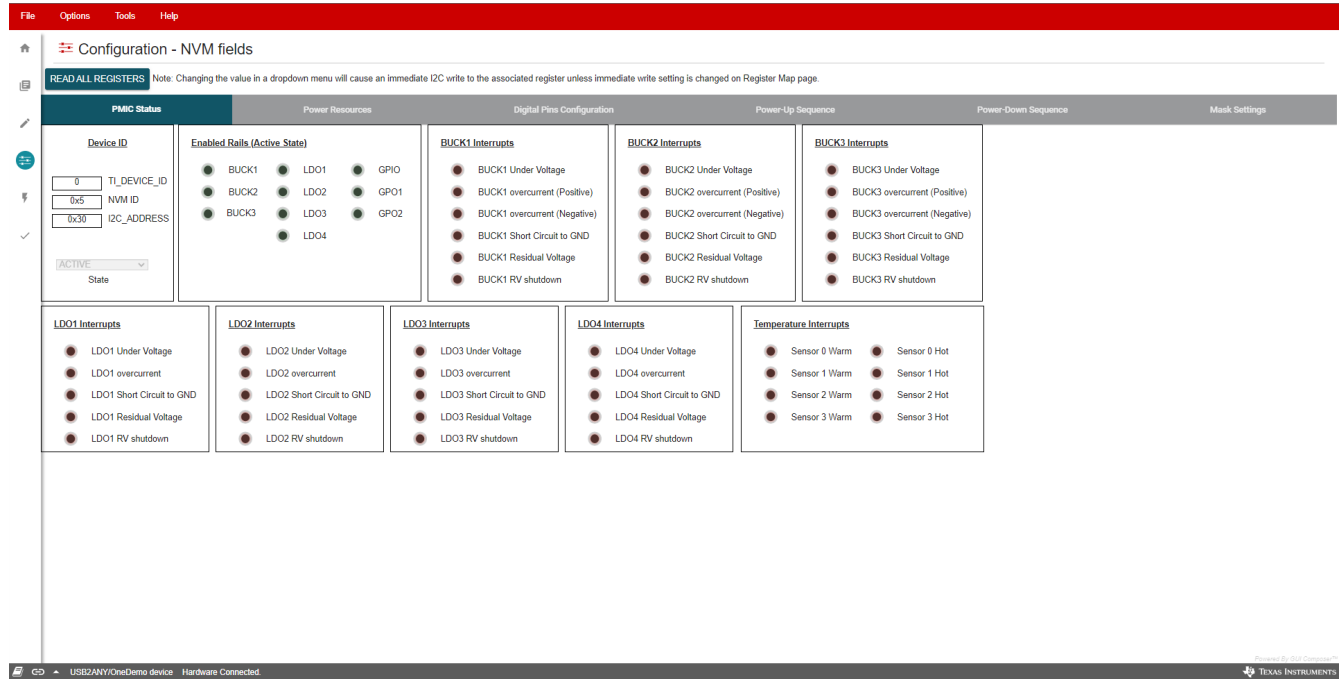


Figure 6-9. NVM Configuration Page

6.6.1 NVM Fields

Register settings can be changed on the NVM Configuration Page and follow the register write setting specified on the Register Map page (Immediate or Deferred).

The *PMIC Status* tab holds a collection of read-only status registers that show the Device ID values as well as all the power rail enables / interrupts, which are displayed as digital LEDs. This section provides fast visual feedback on the PMIC and its operating conditions.

The *Power Resources* tab holds register settings for each power rail of the PMIC. Here you also find a reference table for LDO1 and LDO2 configuration settings (For more information on the Load Switch and BYPASS modes, refer to the device data sheet which is included on the Collateral page).

The *Sequence* tab is used to control power rail sequence and timing registers for both power-up and power-down.

The *Digital Pins Configuration* tab is used to control settings for digital I/O pins (For details on Multi-function pins, see the PMIC data sheet).

The *Mask Settings* tab allows you to control fault reporting for PMIC protection features which includes masking for undervoltage, temperature, and interrupt signals.

6.6.2 Create / Load a Custom Configuration

The NVM Configuration page does not require hardware to develop an NVM configuration. Connection with an actual device is needed only when attempting to upload to a target device.

Once the registers are set to your desired configuration, use the *Register File Format* option, under the *File* tab at the top of the screen, to select a format for your configuration file (shown in [Figure 6-10](#)). A register configuration can be saved in either a CSV (Comma Separated Values) or a JSON (Javascript Object) format. Next, use the *Save Registers As...* option to save your configuration in your selected format. Once the file is created you can save any changes you make to the register configuration using the *Save Registers* option. This option saves to the currently loaded configuration.

To load an existing configuration into the NVM, use the *Load Registers* option and browse to the configuration file location.

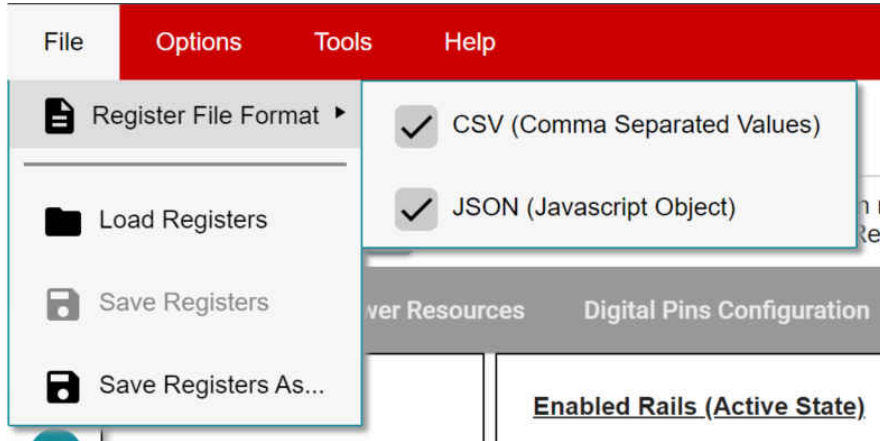


Figure 6-10. Save/Load Register Options

6.7 Sequence Configuration

The TPS65219 GUI features sequence configuration tabs for modifying and plotting the power-up and power-down sequences. The "power-up sequence" and "power-down sequence" tabs plot the voltage level of each signal as a function of time based on the corresponding settings.

Plotting Features

Figure 6-11 demonstrates the features of the sequence configuration tabs.

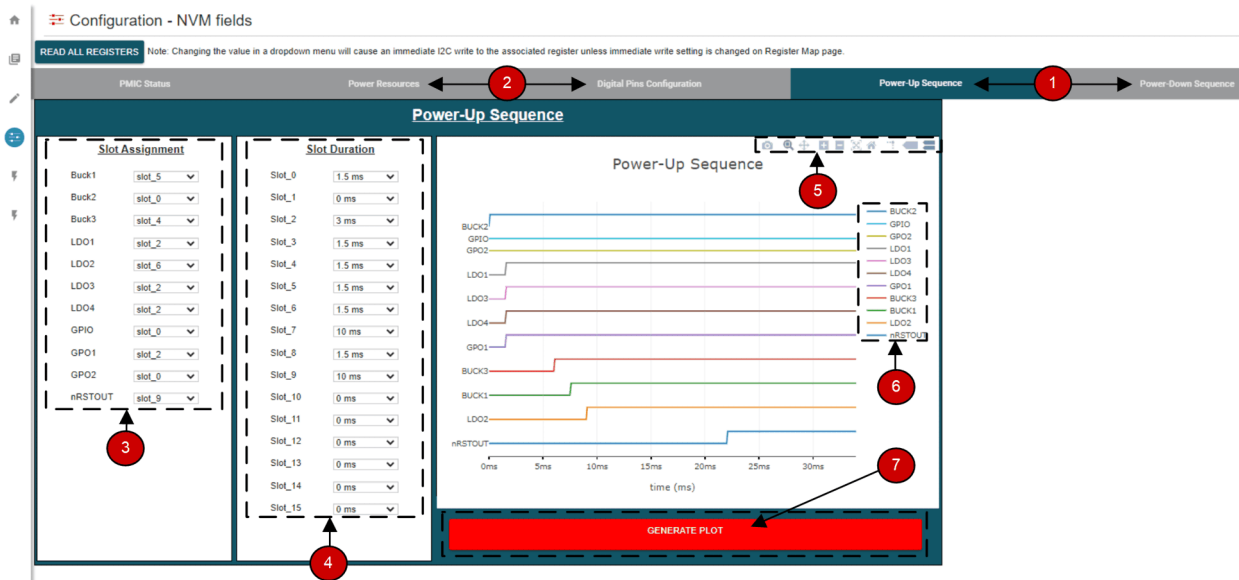


Figure 6-11. Sequence Plotting Tool

Note

Graph rise and fall time durations are not accurate. The actual rise and fall times dependent on load capacitance and other variables.

1. "Power-up sequence" and "power-down sequence" plotting tabs
2. Rails disabled in active state always remain low when plotted. Configure these settings in the "Power Resources" or "Digital Pins Configuration" tab.

3. Slot Assignment: The TPS65219 has 16 possible slot assignments (Slot 0 to Slot 15) which can be assigned to each rail for flexible power sequences.
4. Slot Duration: The TPS65219 has 4 possible slot durations (0ms, 1.5ms, 3ms, 10ms) which can be assigned to each slot for flexible power sequences.
5. Plot menu bar appears upon hovering over graph. This feature is explained in [Menu bar Options](#)
6. Click on a signal in the legend to change its visibility.
7. Plot your solution by pressing the "Generate Plot" button. Signal order is sorted based on which signals rise or fall first

Menu bar Options

The plot menu bar has several settings including:

- Camera: Download Plot as PNG
- Zoom: Left click and drag the mouse on the graph to zoom into the selected area. Enabled by default.
- Pan: Left click and drag the mouse to navigate the plot.
- Zoom In
- Zoom Out
- Auto-Scale Graph
- Reset Axis
- Toggle Like Spikes
- Show Closest Data on Hover
- Compare Data on Hover. Enabled by default.

6.8 NVM Programming Page

The NVM Programming page allows re-programming the device NVM memory to change the default register settings. This page includes four main functions that correspond to the buttons shown in [Figure 6-12](#). The first two steps "I2C OFF REQUEST" and "ENABLE I2C COMMUNICATION" are only needed when re-programming the PMIC from the Initialize state (PMIC rails OFF).

- The **I2C OFF REQUEST** button triggers an OFF request through I2C and sends the PMIC to INITIALIZE state.
- The **ENABLE I2C COMMUNICATION** button enables I2C communication in INITIALIZE state.
 - Once I2C communication is enabled, you can go to the NVM configuration page to select the desired register settings or use the *File* tab options to load a pre-configured JSON or CSV file.
- The **NVM PROGRAMMING** button programs the selected register settings into the NVM.
- The **VALIDATE NVM PROGRAMMING** button reads the NVM content and compares it with the selected register settings. The result (PASS or FAIL) is stored in register 0x34, field 7 "NVM_VERIFY_RESULT".

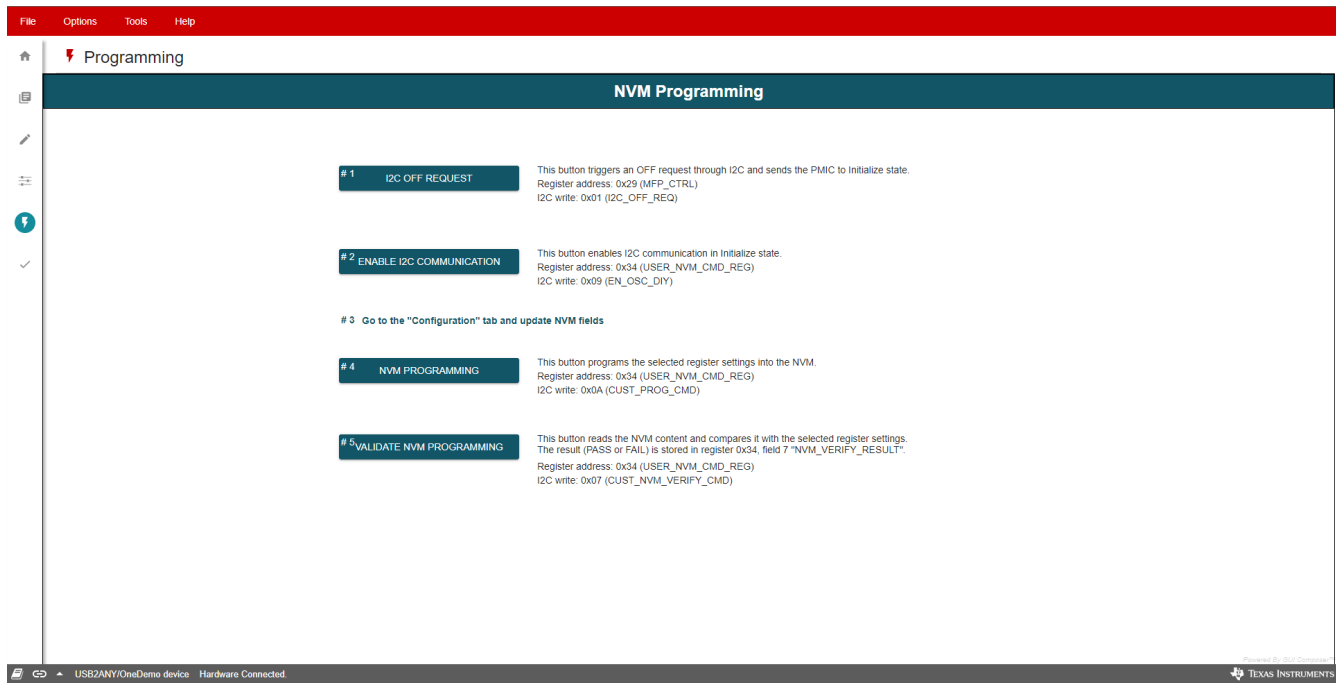


Figure 6-12. NVM Programming Page

6.9 Additional Features

In the Options tab at the top of the GUI interface, you can select *Serial Port...* to display information about the EVM connection to your computer.

The *Tools* tab includes the *Log pane* option. Select this option to open a window that lists recent messages and warnings from the GUI application. These reports are marked with the date and time that each one was received. In the top right of the log window you may filter out the different information types, save the list of events, and clear or close the log window.

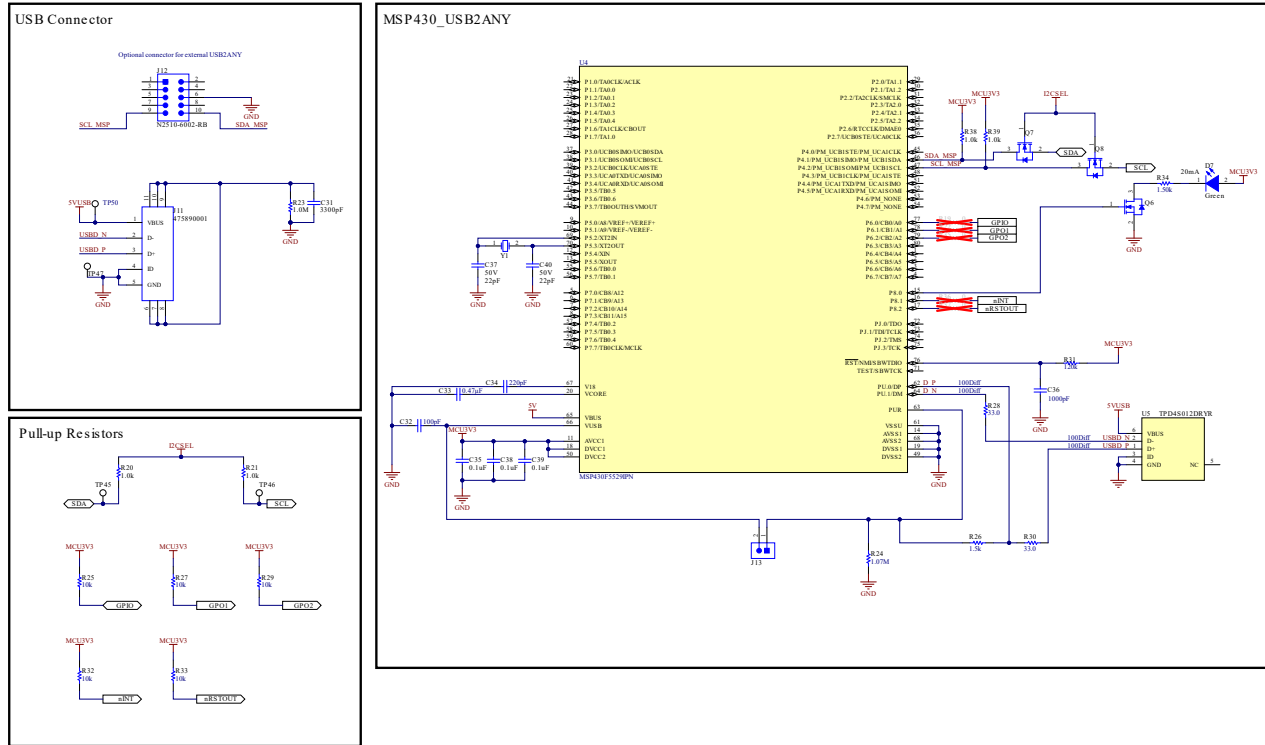


Figure 7-2. TPS65219EVM-SKT, Schematic Page 2

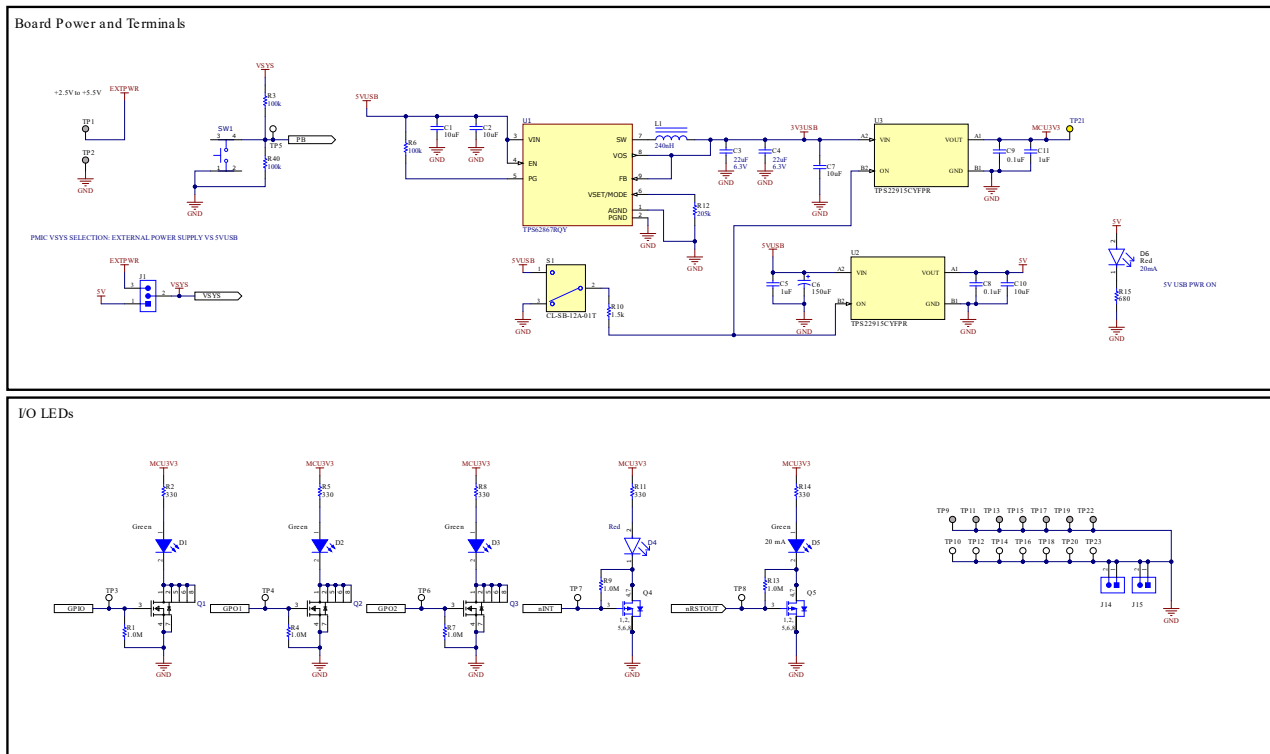


Figure 7-3. TPS65219EVM-SKT, Schematic Page 3

7.2 TPS65219EVM-SKT PCB Layers

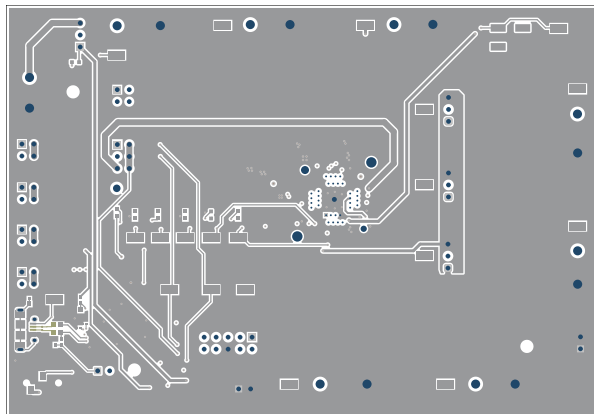


Figure 7-4. TPS65219EVM-SKT Top Layer

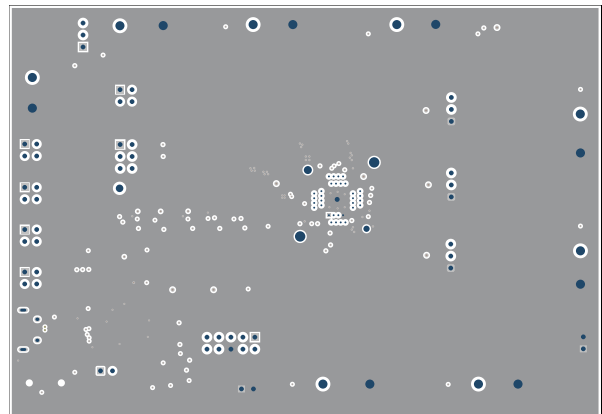


Figure 7-5. TPS65219EVM-SKT Signal Layer 1

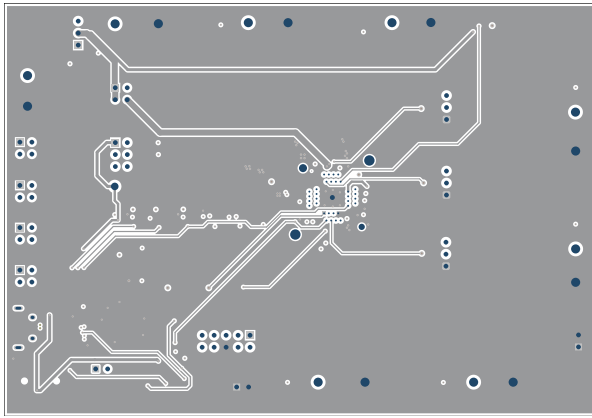


Figure 7-6. TPS65219EVM-SKT Signal Layer 2

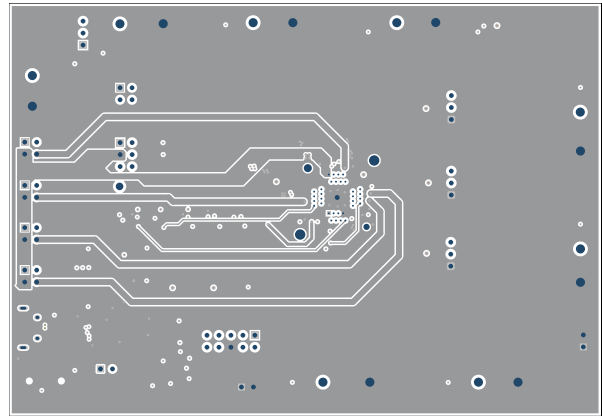


Figure 7-7. TPS65219EVM-SKT Signal Layer 3

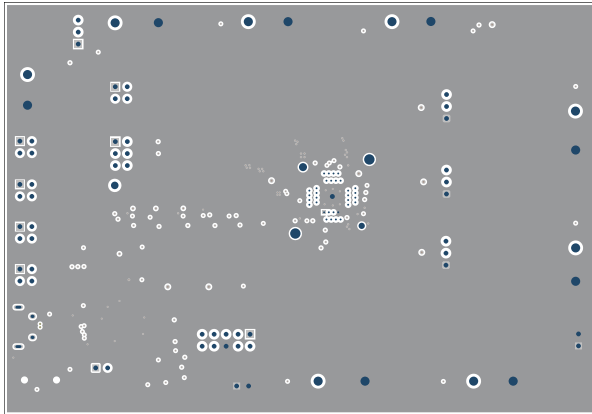


Figure 7-8. TPS65219EVM-SKT Signal Layer 4

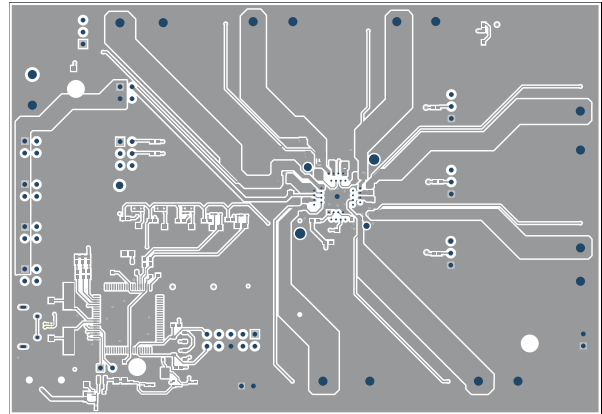


Figure 7-9. TPS65219EVM-SKT Bottom Layer

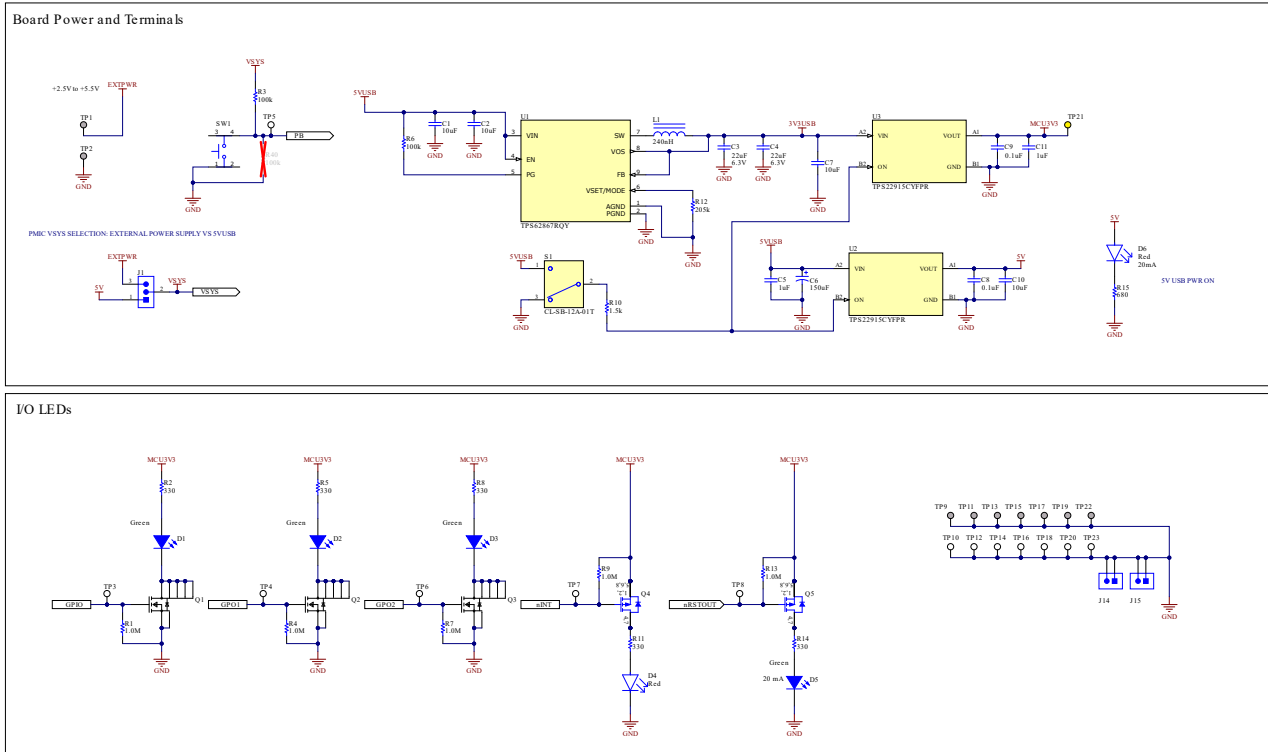


Figure 7-12. TPS65219EVM-RSM, Schematic Page 3

7.4 TPS65219EVM-RSM PCB Layers

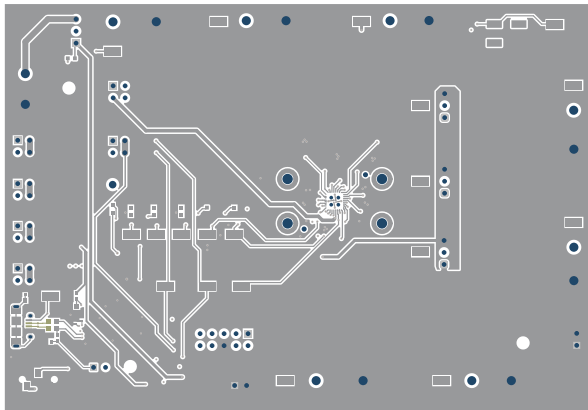


Figure 7-13. TPS65219EVM-RSM Top Layer

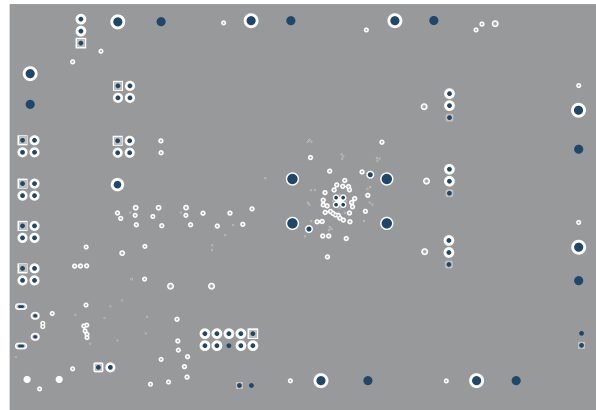


Figure 7-14. TPS65219EVM-RSM Signal Layer 1

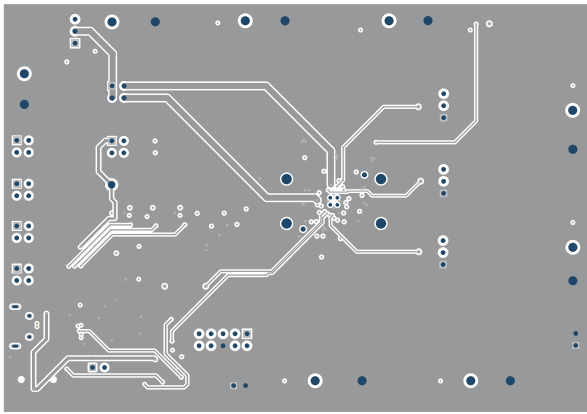


Figure 7-15. TPS65219EVM-RSM Signal Layer 2

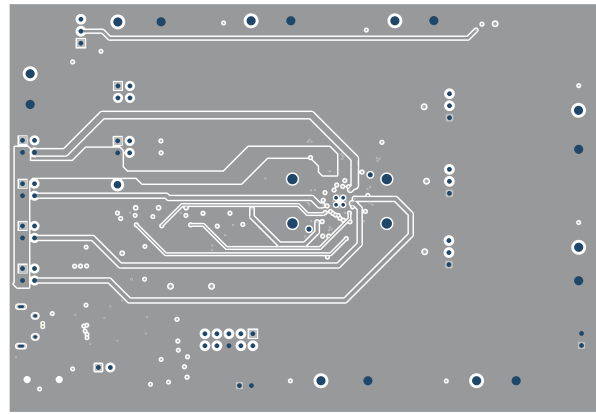


Figure 7-16. TPS65219EVM-RSM Signal Layer 3

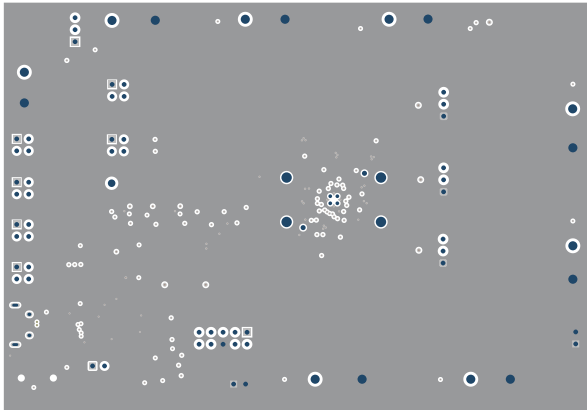


Figure 7-17. TPS65219EVM-RSM Signal Layer 4

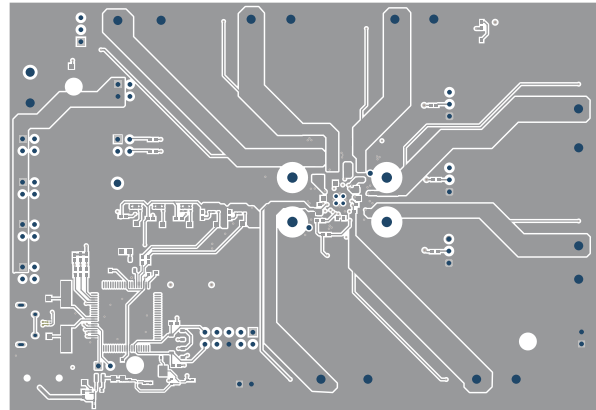


Figure 7-18. TPS65219EVM-RSM Bottom Layer

7.5 Bill of Materials

Table 7-1. Bill of Materials

DESIGNATOR	QUANTITY	DESCRIPTION	PACKAGE REFERENCE	PART NUMBER	MANUFACTURER
C1, C2, C7, C10	4	CAP, CERM, 10 uF, 10 V, +/- 20%, X5R, 0402	402	CL05A106MP5NUNC	Samsung Electro-Mechanics
C3, C4	2	CAP, CERM, 22 uF, 6.3 V, +/- 20%, X5R, 0603	603	GRM188R60J226MEA0D	MuRata
C5, C11	2	CAP, CERM, 1 uF, 35 V, +/- 20%, X5R, 0402	402	GRM155R6YA105ME11D	MuRata
C6	1	CAP, TA, 150 uF, 6.3 V, +/- 20%, 0.025 ohm, SMD	3528-21	T520B157M006ATE025	Kemet
C8, C9	2	CAP, CERM, 0.1 uF, 10 V, +/- 20%, X5R, 0402	402	885012105010	Würth Elektronik
C12, C13, C14, C17	4	CAP, CERM, 4.7 uF, 10 V, +/- 10%, X7S, 0603	603	C1608X7S1A475K080AC	TDK

Table 7-1. Bill of Materials (continued)

DESIGNATOR	QUANTITY	DESCRIPTION	PACKAGE REFERENCE	PART NUMBER	MANUFACTURER
C15, C16, C18, C19, C27, C28, C29, C30	8	CAP, CERM, 2.2 uF, 10 V, +/- 10%, X7S, 0402	402	C1005X7S1A225K050BC	TDK
C20, C22, C23	3	Cap Ceramic 10uF 6.3V X7R ±10% SMD 1206 +125°C Embossed T/R	1206	CL31B106KQHNFN	Samsung
C21, C25, C26	3	CAP, CERM, 47 uF, 6.3 V, +/- 20%, X7S, 1206	1206	C3216X7S0J476M160AC	TDK
C31	1	CAP, CERM, 3300 pF, 50 V, +/- 10%, X7R, 0603	603	C0603C332K5RACTU	Kemet
C32	1	CAP, CERM, 100 pF, 16 V, +/- 10%, X7R, 0201	201	GRM033R71C101KA01D	MuRata
C33	1	CAP, CERM, 0.47 uF, 16 V, +/- 10%, X7S, 0402	402	CGA2B1X7S1C474K050BE	TDK
C34	1	CAP, CERM, 220 pF, 16 V, +/- 10%, X7R, 0201	201	GRM033R71C221KA01D	MuRata
C35, C38, C39	3	CAP, CERM, 0.1 uF, 16 V, +/- 10%, X7R, 0402	402	GCM155R71C104KA55D	MuRata
C36	1	CAP, CERM, 1000 pF, 50 V, +/- 10%, X7R, 0603	603	C0603C102K5RACTU	Kemet
C37, C40	2	CAP, CERM, 22 pF, 50 V, +/- 5%, C0G/NP0, 0603	603	06035A220JAT2A	AVX
D1, D2, D3, D5	4	LED, Green, SMD	1.7x0.65x0.8mm	LG L29K-G2J1-24-Z	OSRAM
D4	1	Red 631nm LED Indication - Discrete 2.2V 0603 (1608 Metric)	603	HSMZ-C190	Broadcom
D6	1	Red 631nm LED Indication - Discrete 2.2V 0603 (1608 Metric)	603	HSMZ-C190	Broadcom
D7	1	LED, Green, SMD	LED_0603	150060VS75000	Wurth Elektronik
H1, H2, H3, H4	4	Bumpon, Hemisphere, 0.44 X 0.20, Clear	Transparent Bumpon	SJ-5303 (CLEAR)	3M
H5	1	IC to place in Socket J16		TPS6521905RHBR, TPS6521905RSMR ⁽¹⁾	Texas Instruments

Table 7-1. Bill of Materials (continued)

DESIGNATOR	QUANTITY	DESCRIPTION	PACKAGE REFERENCE	PART NUMBER	MANUFACTURER
J1	1	Header, 100mil, 3x1, Gold, TH	PBC03SAAN	PBC03SAAN	Sullins Connector Solutions
J2, J3, J4, J5, J6, J7	6	Header, 100mil, 2x2, Tin, TH	Header, 2x2, 2.54mm, TH	PEC02DAAN	Sullins Connector Solutions
J8, J9, J10	3	Header, 100mil, 3x1, Gold, TH	3x1 Header	TSW-103-07-G-S	Samtec
J11	1	Connector, Receptacle, Micro-USB Type AB, R/A, Bottom Mount SMT	5.6x2.5x8.2mm	475890001	Molex
J12	1	Header (shrouded), 100mil, 5x2, High-Temperature, Gold, TH	5x2 Shrouded header	N2510-6002-RB	3M
J13, J14, J15	3	Header, 100mil, 2x1, Tin, TH	Header, 2 PIN, 100mil, Tin	PEC02SAAN	Sullins Connector Solutions
J16 ⁽²⁾	1	C SERIES QFN, 4.0 X 4.0mm DEVICE, 0.40mm PITCH, 32 + 4X H-Pins	SOCKET_VQFN32	32QHC40Y94040	Plastronics
L1	1	Inductor, Shielded, Metal Composite, 240 nH, 5 A, 0.019 ohm, SMD	2x1.6mm	DFE201612E-R24M=P2	MuRata
L2, L4	2	Thin Film Power Inductor 0.47uH 20% 4.5A 29mOhm 0805	805	TFM201208BLE-R47MTCF	TDK
L3	1	470 nH Shielded Wirewound Inductor 7 A 23mOhm Max 2-SMD	SMD2	SRP3020TA-R47M	Bourns
Q1, Q2, Q3	3	30-V N-Channel NexFET Power MOSFET	WS0N6	CSD17318Q2	Texas Instruments
Q4, Q5	2	MOSFET, P-CH, -20 V, -20 A, DQK0006C (WS0N-6)	DQK0006C	CSD25310Q2	Texas Instruments
Q6, Q7, Q8	3	MOSFET, N-CH, 50 V, 0.22 A, SOT-23	SOT-23	BSS138	Fairchild Semiconductor
R1, R4, R7, R9, R13	5	RES, 1.0 M, 5%, 0.1 W, AEC-Q200 Grade 0, 0603	603	CRCW06031M00JNE A	Vishay-Dale
R2, R5, R8, R11, R14	5	RES, 330, 5%, 0.063 W, AEC-Q200 Grade 0, 0402	402	CRCW0402330RJNE D	Vishay-Dale

Table 7-1. Bill of Materials (continued)

DESIGNATOR	QUANTITY	DESCRIPTION	PACKAGE REFERENCE	PART NUMBER	MANUFACTURER
R3, R6	2	RES, 100 k, 5%, 0.1 W, AEC-Q200 Grade 0, 0402	402	ERJ-2GEJ104X	Panasonic
R10, R26	2	RES, 1.5 k, 5%, 0.063 W, AEC-Q200 Grade 0, 0402	402	CRCW04021K50JNE D	Vishay-Dale
R12	1	RES, 205 k, 1%, 0.1 W, 0603	603	RC0603FR-07205KL	Yageo
R15	1	RES, 680, 5%, 0.1 W, 0603	603	RC0603JR-07680RL	Yageo
R16, R17, R18, R25, R27, R29, R32, R33	8	RES, 10 k, 5%, 0.063 W, AEC-Q200 Grade 0, 0402	402	CRCW040210K0JNE D	Vishay-Dale
R20, R21, R38, R39	4	RES, 1.0 k, 5%, 0.063 W, AEC-Q200 Grade 0, 0402	402	CRCW04021K00JNE D	Vishay-Dale
R23	1	RES, 1.0 M, 5%, 0.063 W, AEC-Q200 Grade 0, 0402	402	CRCW04021M00JNE D	Vishay-Dale
R24	1	RES, 1.07 M, 1%, 0.063 W, AEC-Q200 Grade 0, 0402	402	CRCW04021M07FKE D	Vishay-Dale
R28, R30	2	RES, 33.0, 1%, 0.1 W, AEC-Q200 Grade 0, 0603	603	CRCW060333R0FKE A	Vishay-Dale
R31	1	RES, 120 k, 5%, 0.063 W, AEC-Q200 Grade 0, 0402	402	CRCW0402120KJNE D	Vishay-Dale
R34	1	RES, 1.50 k, 1%, 0.1 W, AEC-Q200 Grade 0, 0603	603	CRCW06031K50FKE A	Vishay-Dale
S1	1	Switch, Slide, SPDT, 0.2A, J Lead, SMD	SMD, 3-Leads, Body 8.5x3.5mm, Pitch 2.5mm	CL-SB-12A-01T	Copal Electronics
SH-J1, SH-J2, SH-J3, SH-J4, SH-J5, SH-J6, SH-J7, SH-J8, SH-J9, SH-J10, SH-J12	11	Shunt, 100mil, Flash Gold, Black	Closed Top 100mil Shunt	SPC02SYAN	Sullins Connector Solutions
SW1	1	Switch Tactile N.O. SPST Round Button J-Bend 32VAC 32VDC 1VA 100000Cycles 3N SMD Tube/T/R	SMT_SW_7MM1_6M M3	KT11P3JM34LFS	C&K Components

Table 7-1. Bill of Materials (continued)

DESIGNATOR	QUANTITY	DESCRIPTION	PACKAGE REFERENCE	PART NUMBER	MANUFACTURER
TP1, TP2, TP9, TP11, TP13, TP15, TP17, TP19, TP22, TP29, TP30, TP31, TP32, TP33, TP41, TP42	16	PCB Pin, Swage Mount, TH	PCB Pin(2505-2)	2505-2-00-44-00-00-07-0	Mill-Max
TP3, TP4, TP5, TP6, TP7, TP8, TP10, TP12, TP14, TP16, TP18, TP20, TP23, TP27, TP28, TP34, TP35, TP36, TP37, TP38, TP39, TP40, TP43, TP44, TP45, TP46, TP47, TP50	28	Test Point, Miniature, SMT	Testpoint_Keystone_Miniature	5015	Keystone
TP21	1	Test Point, Multipurpose, Yellow, TH	Yellow Multipurpose Testpoint	5014	Keystone
U1	1	2.4-V to 5.5-V Input, 6-A Step-Down Converter in 1.5-mm x 2.5-mm QFN Package	VQFN-HR9	TPS62867RQYRCT-ND	Texas Instruments
U2, U3	2	5.5V, 2A, 38m? Load Switch With Quick Output Discharge, YFP0004AAAA (DSBGA-4)	YFP0004AAAA	TPS22915CYFPR	Texas Instruments
U4	1	25 MHz Mixed Signal Microcontroller with 128 KB Flash, 8192 B SRAM and 63 GPIOs, -40 to 85 degC, 80-pin QFP (PN), Green (RoHS & no Sb/Br)	PN0080A	MSP430F5529IPN	Texas Instruments
U5	1	4-Channel USB ESD Solution with Power Clamp, DRY0006A (USON-6)	DRY0006A	TPD4S012DRYR	Texas Instruments
XU1 ⁽²⁾	1	Socket, QFN-32, 0.5mm pitch, TH	30.5x16.7x29 mm	QFN-32_40_BT-0.5-02-00	Enplas Tech Solutions
Y1	1	Crystal, 24.000 MHz, 20pF, SMD	Crystal, 11.4x4.3x3.8mm	ECS-240-20-5PX-TR	ECS Inc.

(1) The included PMIC depends on the board you are using, as shown below.

- TPS65219EVM-SKT: TPS6521905RHBR
- TPS65219EVM-RSM: TPS6521905RSMR

(2) The socket model depends on the board you are using, as shown below.

- TPS65219EVM-SKT: QFN-32_40_BT-0.5-02-00
- TPS65219EVM-RSM: 32QHC40Y94040

STANDARD TERMS FOR EVALUATION MODULES

1. *Delivery:* TI delivers TI evaluation boards, kits, or modules, including any accompanying demonstration software, components, and/or documentation which may be provided together or separately (collectively, an "EVM" or "EVMs") to the User ("User") in accordance with the terms set forth herein. User's acceptance of the EVM is expressly subject to the following terms.
 - 1.1 EVMs are intended solely for product or software developers for use in a research and development setting to facilitate feasibility evaluation, experimentation, or scientific analysis of TI semiconductors products. EVMs have no direct function and are not finished products. EVMs shall not be directly or indirectly assembled as a part or subassembly in any finished product. For clarification, any software or software tools provided with the EVM ("Software") shall not be subject to the terms and conditions set forth herein but rather shall be subject to the applicable terms that accompany such Software
 - 1.2 EVMs are not intended for consumer or household use. EVMs may not be sold, sublicensed, leased, rented, loaned, assigned, or otherwise distributed for commercial purposes by Users, in whole or in part, or used in any finished product or production system.
2. *Limited Warranty and Related Remedies/Disclaimers:*
 - 2.1 These terms do not apply to Software. The warranty, if any, for Software is covered in the applicable Software License Agreement.
 - 2.2 TI warrants that the TI EVM will conform to TI's published specifications for ninety (90) days after the date TI delivers such EVM to User. Notwithstanding the foregoing, TI shall not be liable for a nonconforming EVM if (a) the nonconformity was caused by neglect, misuse or mistreatment by an entity other than TI, including improper installation or testing, or for any EVMs that have been altered or modified in any way by an entity other than TI, (b) the nonconformity resulted from User's design, specifications or instructions for such EVMs or improper system design, or (c) User has not paid on time. Testing and other quality control techniques are used to the extent TI deems necessary. TI does not test all parameters of each EVM. User's claims against TI under this Section 2 are void if User fails to notify TI of any apparent defects in the EVMs within ten (10) business days after delivery, or of any hidden defects with ten (10) business days after the defect has been detected.
 - 2.3 TI's sole liability shall be at its option to repair or replace EVMs that fail to conform to the warranty set forth above, or credit User's account for such EVM. TI's liability under this warranty shall be limited to EVMs that are returned during the warranty period to the address designated by TI and that are determined by TI not to conform to such warranty. If TI elects to repair or replace such EVM, TI shall have a reasonable time to repair such EVM or provide replacements. Repaired EVMs shall be warranted for the remainder of the original warranty period. Replaced EVMs shall be warranted for a new full ninety (90) day warranty period.

WARNING

Evaluation Kits are intended solely for use by technically qualified, professional electronics experts who are familiar with the dangers and application risks associated with handling electrical mechanical components, systems, and subsystems.

User shall operate the Evaluation Kit within TI's recommended guidelines and any applicable legal or environmental requirements as well as reasonable and customary safeguards. Failure to set up and/or operate the Evaluation Kit within TI's recommended guidelines may result in personal injury or death or property damage. Proper set up entails following TI's instructions for electrical ratings of interface circuits such as input, output and electrical loads.

NOTE:

EXPOSURE TO ELECTROSTATIC DISCHARGE (ESD) MAY CAUSE DEGRADATION OR FAILURE OF THE EVALUATION KIT; TI RECOMMENDS STORAGE OF THE EVALUATION KIT IN A PROTECTIVE ESD BAG.

3 Regulatory Notices:

3.1 United States

3.1.1 Notice applicable to EVMs not FCC-Approved:

FCC NOTICE: This kit is designed to allow product developers to evaluate electronic components, circuitry, or software associated with the kit to determine whether to incorporate such items in a finished product and software developers to write software applications for use with the end product. This kit is not a finished product and when assembled may not be resold or otherwise marketed unless all required FCC equipment authorizations are first obtained. Operation is subject to the condition that this product not cause harmful interference to licensed radio stations and that this product accept harmful interference. Unless the assembled kit is designed to operate under part 15, part 18 or part 95 of this chapter, the operator of the kit must operate under the authority of an FCC license holder or must secure an experimental authorization under part 5 of this chapter.

3.1.2 For EVMs annotated as FCC – FEDERAL COMMUNICATIONS COMMISSION Part 15 Compliant:

CAUTION

This device complies with part 15 of the FCC Rules. Operation is subject to the following two conditions: (1) This device may not cause harmful interference, and (2) this device must accept any interference received, including interference that may cause undesired operation.

Changes or modifications not expressly approved by the party responsible for compliance could void the user's authority to operate the equipment.

FCC Interference Statement for Class A EVM devices

NOTE: This equipment has been tested and found to comply with the limits for a Class A digital device, pursuant to part 15 of the FCC Rules. These limits are designed to provide reasonable protection against harmful interference when the equipment is operated in a commercial environment. This equipment generates, uses, and can radiate radio frequency energy and, if not installed and used in accordance with the instruction manual, may cause harmful interference to radio communications. Operation of this equipment in a residential area is likely to cause harmful interference in which case the user will be required to correct the interference at his own expense.

FCC Interference Statement for Class B EVM devices

NOTE: This equipment has been tested and found to comply with the limits for a Class B digital device, pursuant to part 15 of the FCC Rules. These limits are designed to provide reasonable protection against harmful interference in a residential installation. This equipment generates, uses and can radiate radio frequency energy and, if not installed and used in accordance with the instructions, may cause harmful interference to radio communications. However, there is no guarantee that interference will not occur in a particular installation. If this equipment does cause harmful interference to radio or television reception, which can be determined by turning the equipment off and on, the user is encouraged to try to correct the interference by one or more of the following measures:

- Reorient or relocate the receiving antenna.
- Increase the separation between the equipment and receiver.
- Connect the equipment into an outlet on a circuit different from that to which the receiver is connected.
- Consult the dealer or an experienced radio/TV technician for help.

3.2 Canada

3.2.1 For EVMs issued with an Industry Canada Certificate of Conformance to RSS-210 or RSS-247

Concerning EVMs Including Radio Transmitters:

This device complies with Industry Canada license-exempt RSSs. Operation is subject to the following two conditions:

(1) this device may not cause interference, and (2) this device must accept any interference, including interference that may cause undesired operation of the device.

Concernant les EVMs avec appareils radio:

Le présent appareil est conforme aux CNR d'Industrie Canada applicables aux appareils radio exempts de licence. L'exploitation est autorisée aux deux conditions suivantes: (1) l'appareil ne doit pas produire de brouillage, et (2) l'utilisateur de l'appareil doit accepter tout brouillage radioélectrique subi, même si le brouillage est susceptible d'en compromettre le fonctionnement.

Concerning EVMs Including Detachable Antennas:

Under Industry Canada regulations, this radio transmitter may only operate using an antenna of a type and maximum (or lesser) gain approved for the transmitter by Industry Canada. To reduce potential radio interference to other users, the antenna type and its gain should be so chosen that the equivalent isotropically radiated power (e.i.r.p.) is not more than that necessary for successful communication. This radio transmitter has been approved by Industry Canada to operate with the antenna types listed in the user guide with the maximum permissible gain and required antenna impedance for each antenna type indicated. Antenna types not included in this list, having a gain greater than the maximum gain indicated for that type, are strictly prohibited for use with this device.

Concernant les EVMs avec antennes détachables

Conformément à la réglementation d'Industrie Canada, le présent émetteur radio peut fonctionner avec une antenne d'un type et d'un gain maximal (ou inférieur) approuvé pour l'émetteur par Industrie Canada. Dans le but de réduire les risques de brouillage radioélectrique à l'intention des autres utilisateurs, il faut choisir le type d'antenne et son gain de sorte que la puissance isotrope rayonnée équivalente (p.i.r.e.) ne dépasse pas l'intensité nécessaire à l'établissement d'une communication satisfaisante. Le présent émetteur radio a été approuvé par Industrie Canada pour fonctionner avec les types d'antenne énumérés dans le manuel d'usage et ayant un gain admissible maximal et l'impédance requise pour chaque type d'antenne. Les types d'antenne non inclus dans cette liste, ou dont le gain est supérieur au gain maximal indiqué, sont strictement interdits pour l'exploitation de l'émetteur.

3.3 Japan

3.3.1 *Notice for EVMs delivered in Japan:* Please see http://www.tij.co.jp/lstds/ti_ja/general/eStore/notice_01.page 日本国内に輸入される評価用キット、ボードについては、次のところをご覧ください。

<https://www.ti.com/ja-jp/legal/notice-for-evaluation-kits-delivered-in-japan.html>

3.3.2 *Notice for Users of EVMs Considered "Radio Frequency Products" in Japan:* EVMs entering Japan may not be certified by TI as conforming to Technical Regulations of Radio Law of Japan.

If User uses EVMs in Japan, not certified to Technical Regulations of Radio Law of Japan, User is required to follow the instructions set forth by Radio Law of Japan, which includes, but is not limited to, the instructions below with respect to EVMs (which for the avoidance of doubt are stated strictly for convenience and should be verified by User):

1. Use EVMs in a shielded room or any other test facility as defined in the notification #173 issued by Ministry of Internal Affairs and Communications on March 28, 2006, based on Sub-section 1.1 of Article 6 of the Ministry's Rule for Enforcement of Radio Law of Japan,
2. Use EVMs only after User obtains the license of Test Radio Station as provided in Radio Law of Japan with respect to EVMs, or
3. Use of EVMs only after User obtains the Technical Regulations Conformity Certification as provided in Radio Law of Japan with respect to EVMs. Also, do not transfer EVMs, unless User gives the same notice above to the transferee. Please note that if User does not follow the instructions above, User will be subject to penalties of Radio Law of Japan.

【無線電波を送信する製品の開発キットをお使いになる際の注意事項】 開発キットの中には技術基準適合証明を受けていないものがあります。技術適合証明を受けていないものご使用に際しては、電波法遵守のため、以下のいずれかの措置を取っていただく必要がありますのでご注意ください。

1. 電波法施行規則第6条第1項第1号に基づく平成18年3月28日総務省告示第173号で定められた電波暗室等の試験設備でご使用いただく。
2. 実験局の免許を取得後ご使用いただく。
3. 技術基準適合証明を取得後ご使用いただく。

なお、本製品は、上記の「ご使用にあたっての注意」を譲渡先、移転先に通知しない限り、譲渡、移転できないものとします。

上記を遵守頂けない場合は、電波法の罰則が適用される可能性があることをご留意ください。日本テキサス・イ

ンスツルメンツ株式会社

東京都新宿区西新宿 6 丁目 2 4 番 1 号

西新宿三井ビル

3.3.3 *Notice for EVMs for Power Line Communication:* Please see http://www.tij.co.jp/lstds/ti_ja/general/eStore/notice_02.page

電力線搬送波通信についての開発キットをお使いになる際の注意事項については、次のところをご覧ください。 <https://www.ti.com/ja-jp/legal/notice-for-evaluation-kits-for-power-line-communication.html>

3.4 European Union

3.4.1 *For EVMs subject to EU Directive 2014/30/EU (Electromagnetic Compatibility Directive):*

This is a class A product intended for use in environments other than domestic environments that are connected to a low-voltage power-supply network that supplies buildings used for domestic purposes. In a domestic environment this product may cause radio interference in which case the user may be required to take adequate measures.

-
4. *EVM Use Restrictions and Warnings:*
 - 4.1 EVMS ARE NOT FOR USE IN FUNCTIONAL SAFETY AND/OR SAFETY CRITICAL EVALUATIONS, INCLUDING BUT NOT LIMITED TO EVALUATIONS OF LIFE SUPPORT APPLICATIONS.
 - 4.2 User must read and apply the user guide and other available documentation provided by TI regarding the EVM prior to handling or using the EVM, including without limitation any warning or restriction notices. The notices contain important safety information related to, for example, temperatures and voltages.
 - 4.3 *Safety-Related Warnings and Restrictions:*
 - 4.3.1 User shall operate the EVM within TI's recommended specifications and environmental considerations stated in the user guide, other available documentation provided by TI, and any other applicable requirements and employ reasonable and customary safeguards. Exceeding the specified performance ratings and specifications (including but not limited to input and output voltage, current, power, and environmental ranges) for the EVM may cause personal injury or death, or property damage. If there are questions concerning performance ratings and specifications, User should contact a TI field representative prior to connecting interface electronics including input power and intended loads. Any loads applied outside of the specified output range may also result in unintended and/or inaccurate operation and/or possible permanent damage to the EVM and/or interface electronics. Please consult the EVM user guide prior to connecting any load to the EVM output. If there is uncertainty as to the load specification, please contact a TI field representative. During normal operation, even with the inputs and outputs kept within the specified allowable ranges, some circuit components may have elevated case temperatures. These components include but are not limited to linear regulators, switching transistors, pass transistors, current sense resistors, and heat sinks, which can be identified using the information in the associated documentation. When working with the EVM, please be aware that the EVM may become very warm.
 - 4.3.2 EVMs are intended solely for use by technically qualified, professional electronics experts who are familiar with the dangers and application risks associated with handling electrical mechanical components, systems, and subsystems. User assumes all responsibility and liability for proper and safe handling and use of the EVM by User or its employees, affiliates, contractors or designees. User assumes all responsibility and liability to ensure that any interfaces (electronic and/or mechanical) between the EVM and any human body are designed with suitable isolation and means to safely limit accessible leakage currents to minimize the risk of electrical shock hazard. User assumes all responsibility and liability for any improper or unsafe handling or use of the EVM by User or its employees, affiliates, contractors or designees.
 - 4.4 User assumes all responsibility and liability to determine whether the EVM is subject to any applicable international, federal, state, or local laws and regulations related to User's handling and use of the EVM and, if applicable, User assumes all responsibility and liability for compliance in all respects with such laws and regulations. User assumes all responsibility and liability for proper disposal and recycling of the EVM consistent with all applicable international, federal, state, and local requirements.
 5. *Accuracy of Information:* To the extent TI provides information on the availability and function of EVMs, TI attempts to be as accurate as possible. However, TI does not warrant the accuracy of EVM descriptions, EVM availability or other information on its websites as accurate, complete, reliable, current, or error-free.
 6. *Disclaimers:*
 - 6.1 EXCEPT AS SET FORTH ABOVE, EVMS AND ANY MATERIALS PROVIDED WITH THE EVM (INCLUDING, BUT NOT LIMITED TO, REFERENCE DESIGNS AND THE DESIGN OF THE EVM ITSELF) ARE PROVIDED "AS IS" AND "WITH ALL FAULTS." TI DISCLAIMS ALL OTHER WARRANTIES, EXPRESS OR IMPLIED, REGARDING SUCH ITEMS, INCLUDING BUT NOT LIMITED TO ANY EPIDEMIC FAILURE WARRANTY OR IMPLIED WARRANTIES OF MERCHANTABILITY OR FITNESS FOR A PARTICULAR PURPOSE OR NON-INFRINGEMENT OF ANY THIRD PARTY PATENTS, COPYRIGHTS, TRADE SECRETS OR OTHER INTELLECTUAL PROPERTY RIGHTS.
 - 6.2 EXCEPT FOR THE LIMITED RIGHT TO USE THE EVM SET FORTH HEREIN, NOTHING IN THESE TERMS SHALL BE CONSTRUED AS GRANTING OR CONFERRING ANY RIGHTS BY LICENSE, PATENT, OR ANY OTHER INDUSTRIAL OR INTELLECTUAL PROPERTY RIGHT OF TI, ITS SUPPLIERS/LICENSORS OR ANY OTHER THIRD PARTY, TO USE THE EVM IN ANY FINISHED END-USER OR READY-TO-USE FINAL PRODUCT, OR FOR ANY INVENTION, DISCOVERY OR IMPROVEMENT, REGARDLESS OF WHEN MADE, CONCEIVED OR ACQUIRED.
 7. *USER'S INDEMNITY OBLIGATIONS AND REPRESENTATIONS.* USER WILL DEFEND, INDEMNIFY AND HOLD TI, ITS LICENSORS AND THEIR REPRESENTATIVES HARMLESS FROM AND AGAINST ANY AND ALL CLAIMS, DAMAGES, LOSSES, EXPENSES, COSTS AND LIABILITIES (COLLECTIVELY, "CLAIMS") ARISING OUT OF OR IN CONNECTION WITH ANY HANDLING OR USE OF THE EVM THAT IS NOT IN ACCORDANCE WITH THESE TERMS. THIS OBLIGATION SHALL APPLY WHETHER CLAIMS ARISE UNDER STATUTE, REGULATION, OR THE LAW OF TORT, CONTRACT OR ANY OTHER LEGAL THEORY, AND EVEN IF THE EVM FAILS TO PERFORM AS DESCRIBED OR EXPECTED.

8. *Limitations on Damages and Liability:*

8.1 *General Limitations.* IN NO EVENT SHALL TI BE LIABLE FOR ANY SPECIAL, COLLATERAL, INDIRECT, PUNITIVE, INCIDENTAL, CONSEQUENTIAL, OR EXEMPLARY DAMAGES IN CONNECTION WITH OR ARISING OUT OF THESE TERMS OR THE USE OF THE EVMS , REGARDLESS OF WHETHER TI HAS BEEN ADVISED OF THE POSSIBILITY OF SUCH DAMAGES. EXCLUDED DAMAGES INCLUDE, BUT ARE NOT LIMITED TO, COST OF REMOVAL OR REINSTALLATION, ANCILLARY COSTS TO THE PROCUREMENT OF SUBSTITUTE GOODS OR SERVICES, RETESTING, OUTSIDE COMPUTER TIME, LABOR COSTS, LOSS OF GOODWILL, LOSS OF PROFITS, LOSS OF SAVINGS, LOSS OF USE, LOSS OF DATA, OR BUSINESS INTERRUPTION. NO CLAIM, SUIT OR ACTION SHALL BE BROUGHT AGAINST TI MORE THAN TWELVE (12) MONTHS AFTER THE EVENT THAT GAVE RISE TO THE CAUSE OF ACTION HAS OCCURRED.

8.2 *Specific Limitations.* IN NO EVENT SHALL TI'S AGGREGATE LIABILITY FROM ANY USE OF AN EVM PROVIDED HEREUNDER, INCLUDING FROM ANY WARRANTY, INDEMNITY OR OTHER OBLIGATION ARISING OUT OF OR IN CONNECTION WITH THESE TERMS, , EXCEED THE TOTAL AMOUNT PAID TO TI BY USER FOR THE PARTICULAR EVM(S) AT ISSUE DURING THE PRIOR TWELVE (12) MONTHS WITH RESPECT TO WHICH LOSSES OR DAMAGES ARE CLAIMED. THE EXISTENCE OF MORE THAN ONE CLAIM SHALL NOT ENLARGE OR EXTEND THIS LIMIT.

9. *Return Policy.* Except as otherwise provided, TI does not offer any refunds, returns, or exchanges. Furthermore, no return of EVM(s) will be accepted if the package has been opened and no return of the EVM(s) will be accepted if they are damaged or otherwise not in a resalable condition. If User feels it has been incorrectly charged for the EVM(s) it ordered or that delivery violates the applicable order, User should contact TI. All refunds will be made in full within thirty (30) working days from the return of the components(s), excluding any postage or packaging costs.

10. *Governing Law:* These terms and conditions shall be governed by and interpreted in accordance with the laws of the State of Texas, without reference to conflict-of-laws principles. User agrees that non-exclusive jurisdiction for any dispute arising out of or relating to these terms and conditions lies within courts located in the State of Texas and consents to venue in Dallas County, Texas. Notwithstanding the foregoing, any judgment may be enforced in any United States or foreign court, and TI may seek injunctive relief in any United States or foreign court.

Mailing Address: Texas Instruments, Post Office Box 655303, Dallas, Texas 75265
Copyright © 2023, Texas Instruments Incorporated

IMPORTANT NOTICE AND DISCLAIMER

TI PROVIDES TECHNICAL AND RELIABILITY DATA (INCLUDING DATASHEETS), DESIGN RESOURCES (INCLUDING REFERENCE DESIGNS), APPLICATION OR OTHER DESIGN ADVICE, WEB TOOLS, SAFETY INFORMATION, AND OTHER RESOURCES "AS IS" AND WITH ALL FAULTS, AND DISCLAIMS ALL WARRANTIES, EXPRESS AND IMPLIED, INCLUDING WITHOUT LIMITATION ANY IMPLIED WARRANTIES OF MERCHANTABILITY, FITNESS FOR A PARTICULAR PURPOSE OR NON-INFRINGEMENT OF THIRD PARTY INTELLECTUAL PROPERTY RIGHTS.

These resources are intended for skilled developers designing with TI products. You are solely responsible for (1) selecting the appropriate TI products for your application, (2) designing, validating and testing your application, and (3) ensuring your application meets applicable standards, and any other safety, security, regulatory or other requirements.

These resources are subject to change without notice. TI grants you permission to use these resources only for development of an application that uses the TI products described in the resource. Other reproduction and display of these resources is prohibited. No license is granted to any other TI intellectual property right or to any third party intellectual property right. TI disclaims responsibility for, and you fully indemnify TI and its representatives against any claims, damages, costs, losses, and liabilities arising out of your use of these resources.

TI's products are provided subject to [TI's Terms of Sale](#), [TI's General Quality Guidelines](#), or other applicable terms available either on [ti.com](#) or provided in conjunction with such TI products. TI's provision of these resources does not expand or otherwise alter TI's applicable warranties or warranty disclaimers for TI products. Unless TI explicitly designates a product as custom or customer-specified, TI products are standard, catalog, general purpose devices.

TI objects to and rejects any additional or different terms you may propose.

Copyright © 2025, Texas Instruments Incorporated

Last updated 10/2025