

TPS6236xEVM-655

This user's guide describes the characteristics, operation, and use of the TPS62360EVM-655 (HPA655-001), the TPS62361BEVM-655 (HPA655-002), the TPS62362EVM-655 (HPA-003), and the TPS62365EVM-655 (HPA655-004) evaluation modules (EVMs). These EVMs demonstrate the Texas Instruments TPS62360, TPS62361B, TPS62362, or TPS62365 Processor Supply with I²C Interface and Remote Sense. This document includes setup instructions, a schematic diagram, bill of materials, and PCB layout drawings for the evaluation module. The only difference between the 4 versions of the EVM is the TPS6236x IC, U1.

Contents

1	Introduction	2
2	Setup	3
3	Software Setup and Operation	6
4	Circuit Use and Modifications	8
5	Test Results	9
6	Board Layout	14
7	Schematic and Bill of Materials	17

List of Figures

1	TPS6236x Software Main Panel	6
2	Efficiency vs. Input Voltage ($I_{OUT} = 1.5A, V_{OUT} = 1.4V$)	9
3	Efficiency vs. Output Current ($V_{IN} = 3.6V, V_{OUT} = 0.92, 1.16, 1.4, 1.7$)	9
4	Load Regulation ($V_{OUT} = 1.4V, V_{IN} = 3.6V$)	10
5	Line Regulation ($V_{OUT} = 1.4V, I_{OUT} = 1.5A$).....	10
6	Start-up ($V_{IN} = 3.6V, V_{OUT} = 1.4V, I_{OUT} = 1.5A$)	11
7	Shutdown ($V_{IN} = 3.6V, V_{OUT} = 1.4V, I_{OUT} = 0, \text{output cap discharge enabled}$).....	11
8	Output Voltage Ripple ($V_{IN} = 3.6V, V_{OUT} = 1.4V, I_{OUT} = 3A$).....	12
9	Input Voltage Ripple ($V_{IN} = 3.6V, V_{OUT} = 1.4V, I_{OUT} = 3A$).....	12
10	Load Transient Response ($V_{IN} = 3.6V, V_{OUT} = 1.4V, I_{OUT} = 1A \text{ to } 2A \text{ step}$)	13
11	Thermal Performance ($V_{IN} = 3.6V, V_{OUT} = 1.4V, I_{OUT} = 3A$)	13
12	Assembly Layer.....	14
13	Top Layer.....	15
14	Layer 2.....	15
15	Layer 3	16
16	Bottom Layer.....	16
17	TPS6236xEVM-655 Schematic.....	17

List of Tables

1	Performance Specification Summary.....	2
2	Default Jumper Settings.....	5
3	TPS6236x Solution Required Components	18
4	TPS6236xEVM-655 Evaluation Components.....	18

1 Introduction

1.1 Requirements

To operate this EVM, connect and properly configure the following components:

A personal computer (PC) with a USB port is required to operate this EVM. The TPS6236x interface software runs on the PC and communicates with the EVM via the PC's USB port. Commands can be sent to the internal registers of the TPS6236x through the USB port. The software has been tested with the PC requirements listed below. It may work with other operating systems and configurations, but this has not been verified.

Personal Computer Requirements

- Windows XP™ operating system
- .NET 2.0 or higher
- USB port
- 10 MB of free hard disk space
- 512 MB of RAM

USB-TO-GPIO Adapter

The USB-TO-GPIO adapter is the link that allows the PC and the EVM to communicate. One end of the USB-TO-GPIO adapter connects to the PC with the supplied USB cable. The other end of the USB-TO-GPIO adapter connects to the EVM with the supplied ribbon cable.

When a command is written to the EVM, the interface program running on the PC sends the commands to the PC USB port. The USB-TO-GPIO adapter receives the USB command, converts the signal to an I²C protocol, and sends the I²C signal to the TPS6236x EVM board.

Software

Texas Instruments provides software to assist in evaluating this EVM. This software can be downloaded from the TPS6236xEVM-655 Product Page, located at: <http://focus.ti.com/docs/toolsw/folders/print/tps62360evm-655.html>.

Printed-Circuit Board Assembly

The board contains either the TPS62360, TPS62361B, TPS62362, or TPS62365 IC and the required external components to evaluate it as a processor power supply solution.

1.2 Performance Specification Summary

A summary of the performance specifications is provided in [Table 1](#). Specifications are given for an input voltage of 3.6V and an output voltage of 1.4V, unless otherwise specified. The TPS6236x is designed and tested for $V_{IN} = 2.5V$ to 5.5V. The ambient temperature is 25°C for all measurements, unless otherwise noted.

Table 1. Performance Specification Summary

SPECIFICATION	TEST CONDITIONS	MIN	TYP	MAX	UNIT
V_{IN} voltage range		2.5	3.6	5.5	V
Output voltage set point - TPS62360/2	Programmable in 10 mV steps	0.77		1.4	V
Output voltage set point - TPS62361B/5	Programmable in 10 mV steps	0.5		1.77	V
Output current range - TPS62360, TPS6361B, TPS62362		0		3	A
Output current range - TPS62365		0		3.5	A
Line regulation	$I_{OUT} = 1.5A, V_{OUT} = 1.4V$		±0.1%		
Load regulation	$V_{IN} = 3.6V, V_{OUT} = 1.4V$		±0.15%		
Load transient response	$I_{OUT} = 1A$ to 2A	Voltage change	40		mV
		Recovery time	10		µs
	$I_{OUT} = 2A$ to 1A	Voltage change	45		mV
		Recovery time	8		µs
Input ripple voltage	$V_{IN} = 3.6V, V_{OUT} = 1.4V, I_{OUT} = 3A$		120		mV _{PP}
Output ripple voltage	$V_{IN} = 3.6V, V_{OUT} = 1.4V, I_{OUT} = 3A$		10		mV _{PP}

Table 1. Performance Specification Summary (continued)

SPECIFICATION	TEST CONDITIONS	MIN	TYP	MAX	UNIT
Maximum efficiency	$V_{IN} = 3.6V$, $V_{OUT} = 1.7V$, $I_{OUT} = 750mA$		91.4%		

2 Setup

This section describes the jumpers and connectors on the EVM as well as how to properly connect, set up, and use the TPS6236xEVM-655.

2.1 Connector/Jumper Descriptions

2.1.1 J1 – V_{IN}

This header is for the positive input supply voltage to the converter. The leads to the input supply should be twisted and kept as short as possible to minimize EMI transmission and reduce inductive voltage droop at a load transient event. This voltage should be between 2.5V and 5.5V.

2.1.2 J2 – S+/S-

Sense connector for V_{IN} . Connect input supply's sense leads to this point. Monitor the V_{IN} voltage at this point.

2.1.3 J3 – GND

This is the return connection for the input power supply of the converter. The leads to the input supply should be twisted and kept as short as possible to minimize EMI transmission and reduce inductive voltage droop at a load transient event.

2.1.4 J4 – V_{OUT}

This header connects to V_{OUT} . Connect the load (processor) at this point if the load current will remain below 1A. If the load current will exceed 1A, use terminal block J7 instead. The leads to the load should be twisted and kept as short as possible to minimize EMI transmission and reduce inductive voltage droop at a load transient event.

2.1.5 J5 – SNS+/SNS-

Remote sense connector for the IC. **For proper regulation, this must be connected at the load.** This is a high impedance connection back to the TPS6236x's remote sense inputs and is required for output regulation. Monitor the output voltage at this point.

2.1.6 J6 – GND

This is the return connection for the load. If the load current will exceed 1A, do not use headers J4 and J6, but use terminal block J7 instead. The leads to the load should be twisted and kept as short as possible to minimize EMI transmission and reduce inductive voltage droop at a load transient event.

2.1.7 J7 – V_{OUT} /GND Terminal Block

This terminal block should be used to connect to the load (processor) if the load current will exceed 1A. If the load current will remain below 1A, the J4/J6 headers may be used instead. The leads to the load should be twisted and kept as short as possible to minimize EMI transmission and reduce inductive voltage droop at a load transient event.

2.1.8 J8 – I²C Connection from USB-TO-GPIO Adaptor

This connects the USB-TO-GPIO adaptor to the TPS6236xEVM-655. It provides the I²C signals and a 3.3V supply for powering V_{DD} . If the USB-TO-GPIO adaptor is not used, do not connect to J8, but connect the I²C signals to the J9 header instead. This connector is keyed to prevent incorrect installation.

2.1.9 J9 – I²C Monitor Point and Alternate Connection

This header is provided to connect to or monitor the I²C signals on the TPS6236xEVM-655. If the I²C signals are being sent via this header (and not via the USB-TO-GPIO adaptor), do not plug into the J8 header and provide a separate V_{DD} supply on JP1 without any jumper installed.

2.1.10 J10 – Load Step Signal Input

This SMA connector accepts a signal input from a function generator that drives Q1 in order to evaluate the TPS6236x's transient response.

2.1.11 JP1 – V_{DD} Control

This jumper is used to connect V_{DD} to either a 3.3V rail provided by the USB-TO-GPIO adaptor (jumper across pins 1 and 2) or to GND to reset the I²C registers (jumper across pins 2 and 3). Alternatively, the user can provide their own V_{DD} voltage (1.15 - 3.6V) between pins 2 and 3 of JP1. No jumper should be installed in this case. For normal operation without an external supply voltage, the jumper should be installed between pins 1 and 2.

2.1.12 JP2 – VSEL0

This jumper sets the VSEL0 pin to either a logic high (jumper across pins 1 and 2) or a logic low (jumper across pins 2 and 3).

2.1.13 JP3 – VSEL1

This jumper sets the VSEL1 pin to either a logic high (jumper across pins 1 and 2) or a logic low (jumper across pins 2 and 3).

2.1.14 JP4 – EN

This jumper sets the EN pin to either a logic high (jumper across pins 1 and 2) or a logic low (jumper across pins 2 and 3). When EN is low, the TPS6236x output will be off and not switching. Set EN to high to turn on the output voltage.

2.2 Software Setup

The software is available at the TI website,

<http://focus.ti.com/docs/toolsw/folders/print/tps62360evm-655.html>.

Download and unzip the file. Run setup.exe and follow the on screen instructions to complete the installation.

NOTE: This installation page is best viewed with Microsoft Internet Explorer browser (it may not work correctly with other browsers)

The Microsoft .Net Framework 2.0 is required for the software to run.

After installation, the software should automatically run. To run the software later, go to

Start→All Programs→Texas Instruments→TPS6236x EVM→TPS6236x EVM.

During future use of the software, it may prompt you to install a new version if one becomes available on the Web.

NOTE: VeriSign™ Code Signing is used to prevent any malicious code from changing this application. If at any time in the future the binaries are modified, the code will no longer attempt to run.

2.3 Hardware Setup

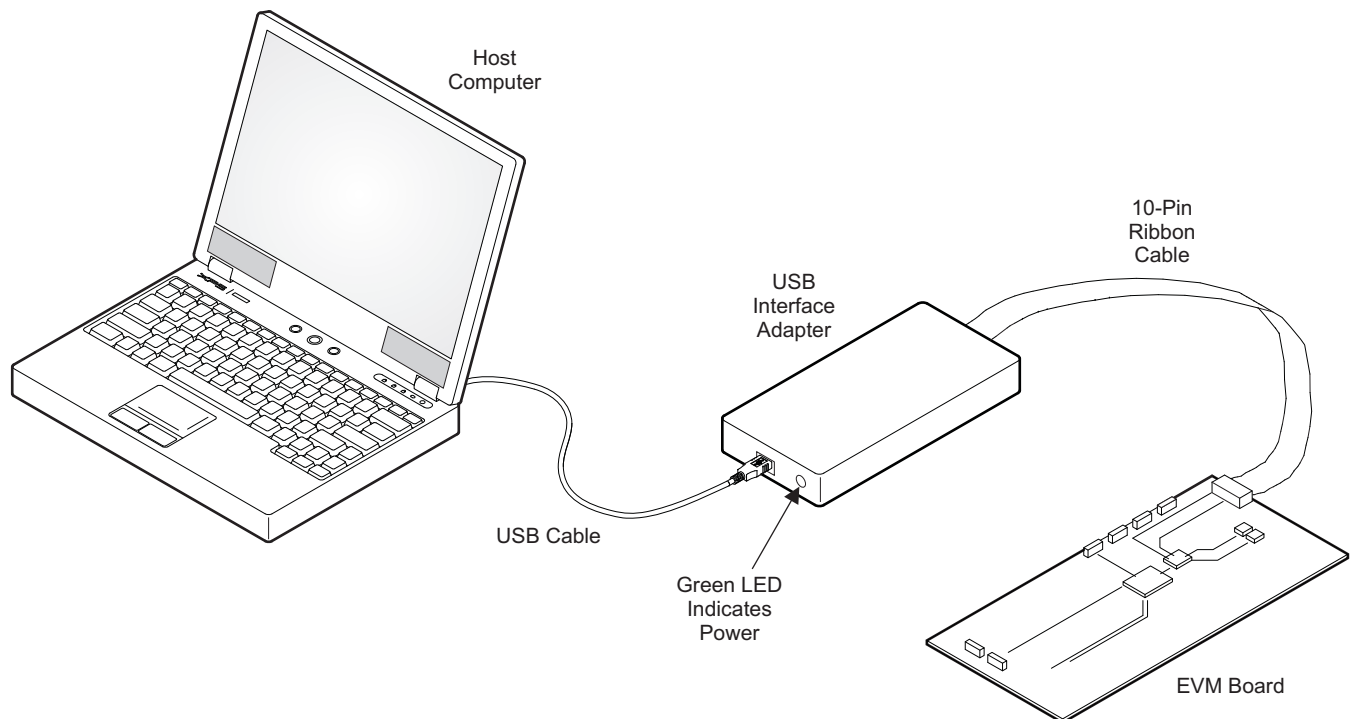
Table 2 shows the board default jumper settings.

Table 2. Default Jumper Settings

JUMPER	DEFAULT
JP1	Installed across pins 1 and 2
JP2	Installed across pins 2 and 3
JP3	Installed across pins 2 and 3
JP4	Installed across pins 1 and 2

Connect the USB-TO-GPIO adapter to your PC using the supplied USB cable. Connect the TPS6236xEVM connector J8 to the USB-TO-GPIO adapter using the supplied 10-pin ribbon cable. The connectors on the ribbon cable are keyed to prevent incorrect installation.

USB Interface Adaptor Quick Connection Diagram



Connect the load (processor) to either the output headers J4 and J6 (for currents below 1A) or to the output terminal block J7 (for currents greater than 1A). The leads should be short and twisted.

Connect the SNS+ and SNS- signals from header J5 to the load. **For proper regulation, these must be connected to the output.**

Install jumpers, JP1 through JP4 to the desired positions. Jumper JP1 must be across pins 1 and 2 for the TPS6236x to operate.

Connect at least a 3 A rated input power supply, set to provide between 2.5V and 5.5V, between J1 and J3. The leads should be short and twisted. Turn on the power supply.

3 Software Setup and Operation

This section provides descriptions of the EVM software and functionality.

The supplied software is used to communicate with the TPS6236xEVM. Click on the icon on the host PC to start the software. The host PC software first checks the firmware version of the USB-TO-GPIO adapter. If an incorrect firmware version is installed, the software automatically searches on the Internet (if connected) for updates. If a new update is available, the software notifies the user of the update, downloads and installs the software. Note that after the firmware is updated, the user must disconnect and then reconnect the USB cable between the adapter and PC, as instructed during the install process. The host PC software also automatically searches on the Internet (if connected) for updates to the EVM software. If a new update is available, the software notifies the user of the update, downloads and installs the update.

V_{IN} and V_{DD} must be supplied for the software to detect the TPS6236x and run.

The software reads the registers on the TPS6236x and automatically determines which version of the IC is installed. Even if the IC is disabled via the EN pin (JP4), the user can still communicate with the TPS6236x if V_{IN} and V_{DD} are supplied. If no IC is detected, the software will abort loading.

The software displays the main panel for the user interface, shown in [Figure 1](#).

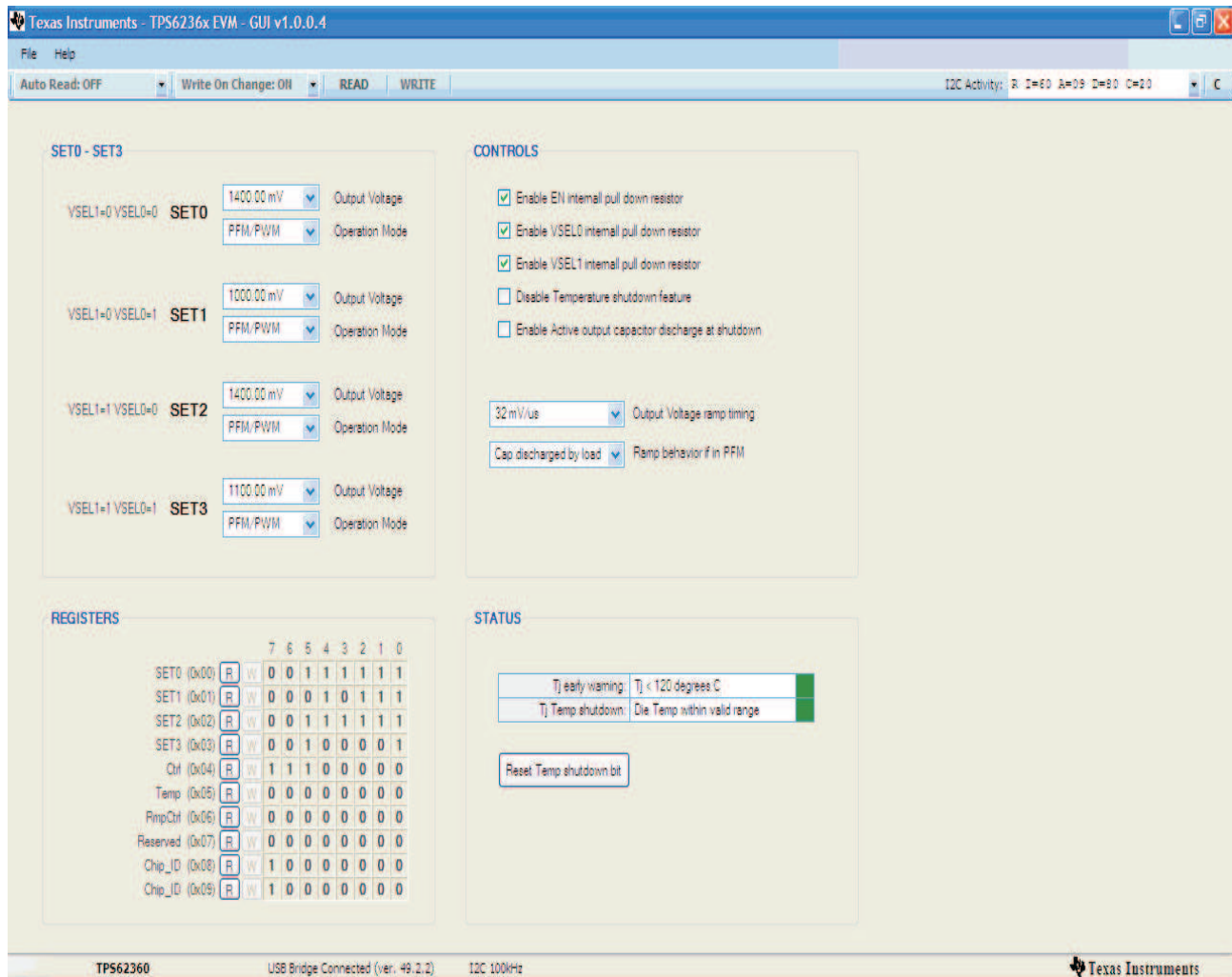


Figure 1. TPS6236x Software Main Panel

It is recommended that the user press the 'READ' button at the top of the screen immediately after loading the software to confirm that the software and cable connections are working properly. The message box at the top right of the main panel (I²C Activity) displays all I²C activity. The message box at the bottom (USB Bridge Connected) displays whether or not the USB-TO-GPIO connection is functional.

The software itself performs no calculations or computations and simply reads and writes to and from the IC's registers through the I²C interface. Each register's bits can either be changed manually by changing the boxes corresponding to each bit in the panel's bottom left half (REGISTERS section), or they can be changed through the drop-down boxes and buttons in the rest of the panel. Some bits are reserved and not writeable. These will not allow you to click on them to change their setting. For example, since the TPS62360 does not have an operational register bit at bit 6 of registers 0x00h through 0x03h, the TPS62360's main panel will not allow writes to those bits. The I²C bus speed is fixed at 100 kbps and this is noted at the bottom of the screen.

Following any change to an individual bit, drop-down box, or button, the user must write the new values to the registers by either clicking the 'W' button to the left of each affected register or by clicking the 'WRITE' button at the top of the screen.

In order to reduce the amount of manual reading and writing required, the two drop-downs at the top left of the screen have been provided to do this automatically. The 'Auto Read' drop down allows the option of automatically reading all the registers at specific time intervals. The 'Write On Changes' drop-down allows the option of automatically writing a change to the registers as soon as it is made in the software.

The TPS6236x datasheet is available via the 'Help' menu (Internet access is required). The datasheet discusses the functionality of the various register bits, which is also briefly repeated here.

The drop-downs in the top left section of the software (SET0-SET3 section) correspond to registers 0x00h through 0x03h in the TPS6236x. These registers set the target output voltage and operating mode (PFM/PWM or forced PWM). The output voltage on the TPS62360/2 is settable in 10 mV steps between 0.77V and 1.4V. The output voltage on the TPS62361B/5 is settable in 10 mV steps between 0.5V and 1.77V. The operating mode is either PFM/PWM, in which the IC is allowed to skip switching pulses at light loads to keep the converting efficiency high, or forced PWM mode, in which the IC allows negative inductor current at light loads to maintain a specific switching frequency and output noise. The TPS6236x only runs at the settings of one of these four registers at a time. This operating register is selected by the VSEL0 and VSEL1 jumpers and can be changed during operation.

The top right section of the software (CONTROLS section) contains the functionality of registers 0x04h and 0x06h and some of the functionality of register 0x05h. The first 3 check boxes enable an internal resistor on any of the EN, VSEL0, or VSEL1 pins. This resistor, which is internal to the TPS6236x, would keep that pin in a defined state if it were left floating. The 'Disable Temperature shutdown feature' bit disables the temperature shutdown internal to the IC, if selected. The 'Enable Active output capacitor discharge at shutdown' forces the IC to actively discharge the output capacitor during shutdown. The first drop-down sets the output voltage ramp timing and the final drop-down describes the ramp behavior when the TPS6236x is changing its output voltage in PFM mode.

The bottom right section of the software (STATUS section) contains the remaining bits in register 0x05h. The top indicator is green if the IC die temperature is low enough and turns red when the bit is set corresponding to a die temperature exceeding 120°C typical. The indicator on the bottom turns red if thermal shutdown has occurred. When this does occur, the TPS6236x will latch off and the temperature must decrease below a hysteresis amount and the T_J Temp shutdown bit needs to be reset by the user. The button at the bottom of this section is provided for this purpose.

4 Circuit Use and Modifications

Besides the required circuitry to operate the TPS6236x (outlined in a white silk screen border on the PCB), there are additional circuits present on the TPS6236xEVM-655 that assist in evaluating the TPS6236x as a processor power supply solution. Additionally, there are modifications that can be made to adapt the circuit's performance to the needs of a particular application.

4.1 Load Step Circuit

The TPS6236xEVM-655 contains a simple circuit that can produce fast load current steps at the output of the TPS6236x. This can evaluate the response of the TPS6236x to various load transients. To operate this circuit, connect a function generator to SMA connector J10 or TP4. The output of the function generator should be a square wave with a small duty cycle. The output high level controls the gate to source voltage of the power transistor, Q1, and should be adjusted to generate the desired step current high level. The output low level sets the step current low level. Good settings to start with are a square wave signal running at 100 Hz and 5% duty cycle going from 0V to 1.5V. These settings can be adjusted in order to generate the desired load step.

Resistor R6 is present to observe the load step current by measuring the voltage across TP2 and TP3. Oscilloscope settings of 100mV / div translate to a current in R6 of 1A / div.

4.2 Output Voltage Buffer

The output voltage buffer circuit simply buffers the SNS+/- output with a unity gain op amp. This transforms SNS+ and SNS- to a lower impedance signal that can be measured by high impedance measurement equipment, such as an oscilloscope. The op amp, U2, is powered from the USB-TO-GPIO adaptor. The USB-TO-GPIO adaptor must be installed for the output voltage buffer circuit to operate.

C13 is provided to reduce the bandwidth and noise of the input signal to the operational amplifier.

4.3 Circuit Modifications

Modifications may be made to the circuit. Any modifications will affect the performance of the EVM and must remain within the limits of the TPS6236x IC, as detailed in the datasheet.

4.3.1 Output Capacitors

There are 3 locations for extra output capacitors to be installed in order to reduce output ripple or lessen the voltage drop due to a load transient. C7 allows an extra capacitor to be installed near the TPS6236x IC, while C10 and C11 allow extra capacitors to be installed closer to the point of load, which is simulated by the load step circuit. The total output capacitance must remain below the maximum capacitance allowed in the datasheet.

4.3.2 Input Capacitors

C9 is provided to locate additional input capacitance near the TPS6236x input. Additional capacitance at C9 will decrease the input voltage ripple.

C8 is provided to form a complete 'PI'-type filter for the AVIN input. With the change of R1 to some small value (around 10 Ω), the C-R-C filter is complete. This filter is not necessary for operation of the TPS6236x.

4.3.3 I²C Pull-up Resistors

R2 and R3 are locations for optional pull-up resistors for the I²C signals. They are required when not using the USB-TO-GPIO adaptor but are not recommended when using the adaptor. If used, their typical value is around 2.2k Ω .

5 Test Results

This section provides typical performance waveforms for the TPS6236xEVM-655.

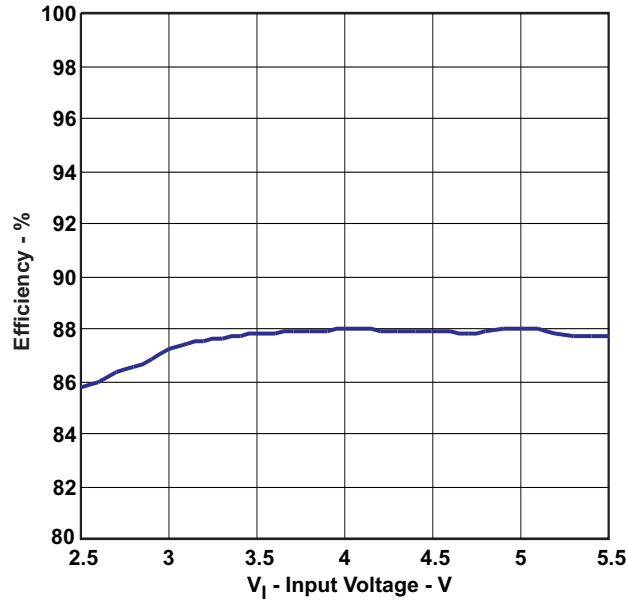


Figure 2. Efficiency vs. Input Voltage ($I_{OUT} = 1.5A$, $V_{OUT} = 1.4V$)

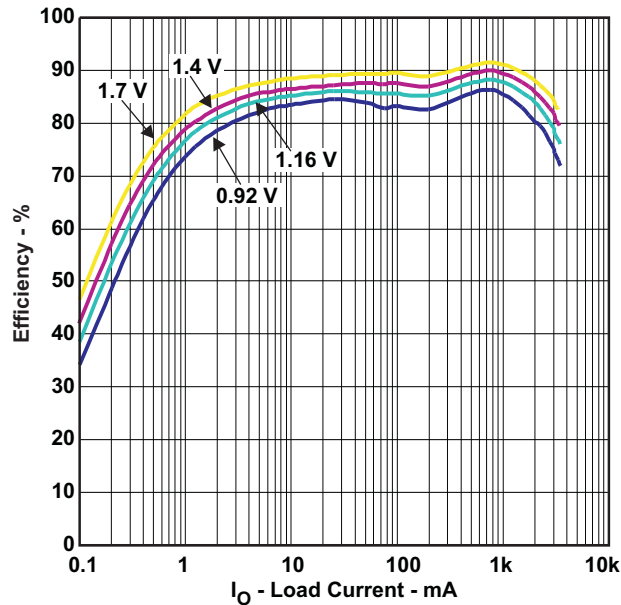


Figure 3. Efficiency vs. Output Current ($V_{IN} = 3.6V$, $V_{OUT} = 0.92, 1.16, 1.4, 1.7$)

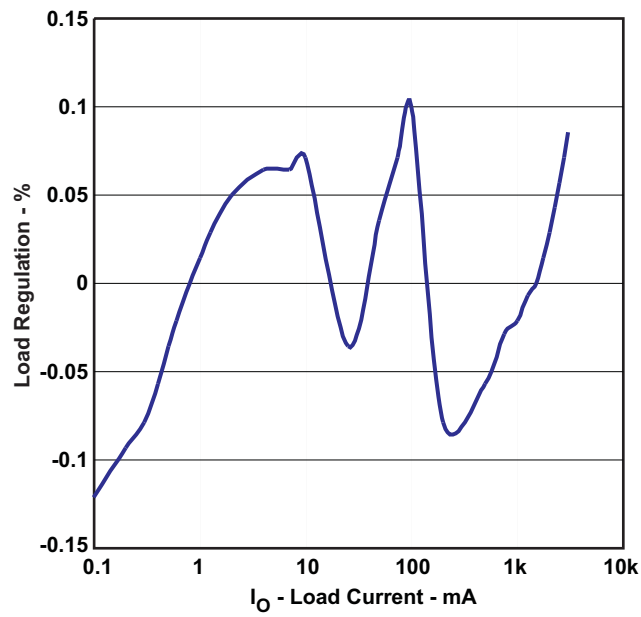


Figure 4. Load Regulation ($V_{OUT} = 1.4V$, $V_{IN} = 3.6V$)

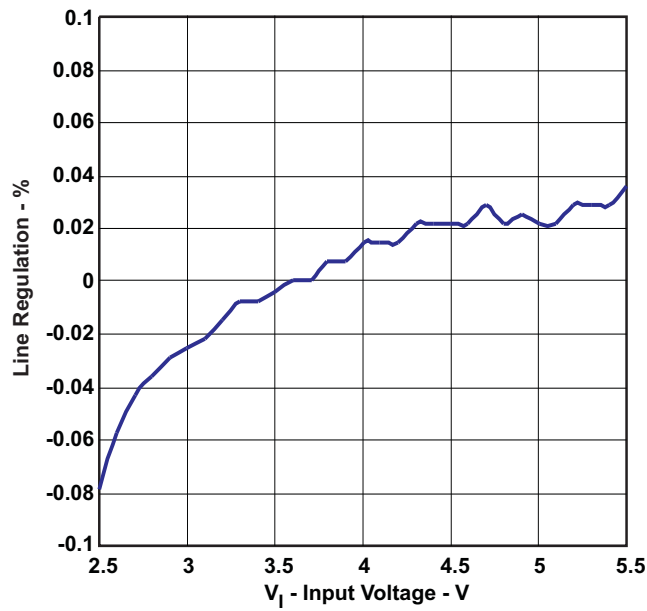


Figure 5. Line Regulation ($V_{OUT} = 1.4V$, $I_{OUT} = 1.5A$)

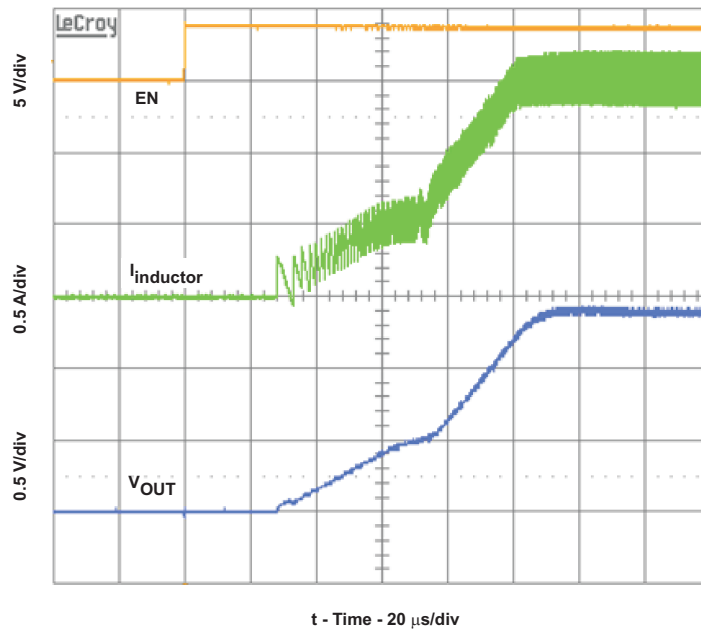


Figure 6. Start-up ($V_{IN} = 3.6V$, $V_{OUT} = 1.4V$, $I_{OUT} = 1.5A$)

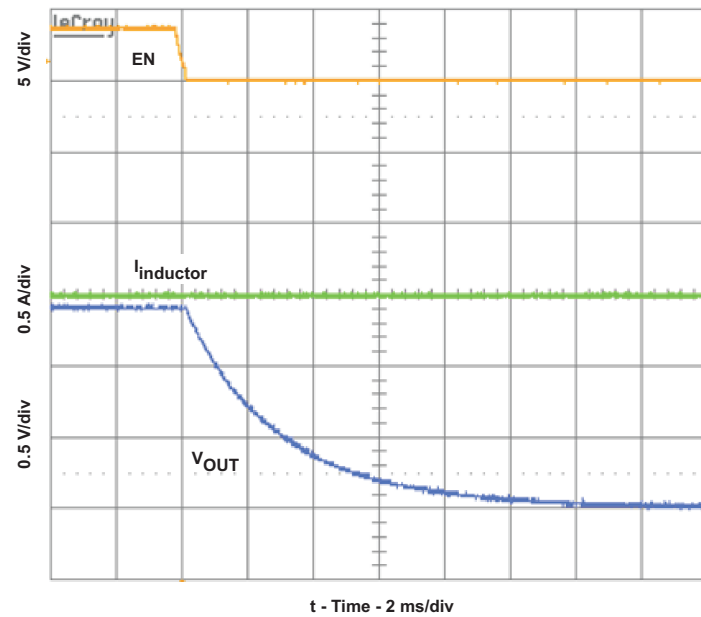


Figure 7. Shutdown ($V_{IN} = 3.6V$, $V_{OUT} = 1.4V$, $I_{OUT} = 0$, output cap discharge enabled)

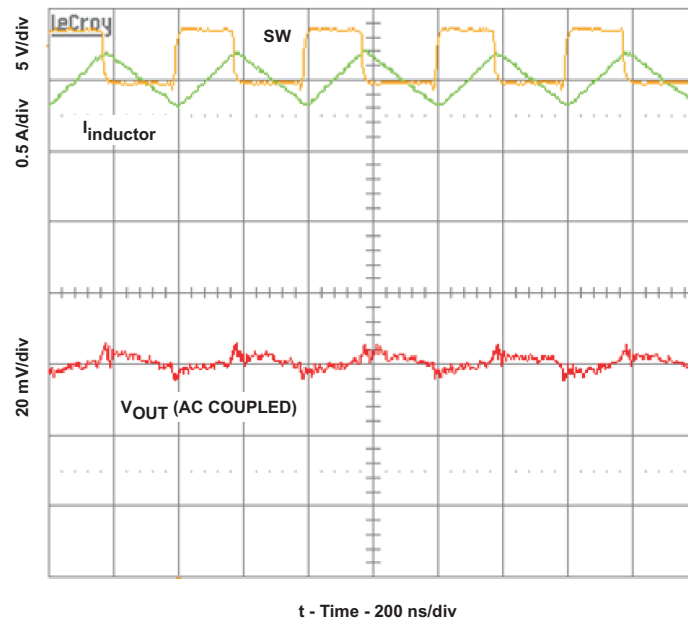


Figure 8. Output Voltage Ripple ($V_{IN} = 3.6V$, $V_{OUT} = 1.4V$, $I_{OUT} = 3A$)

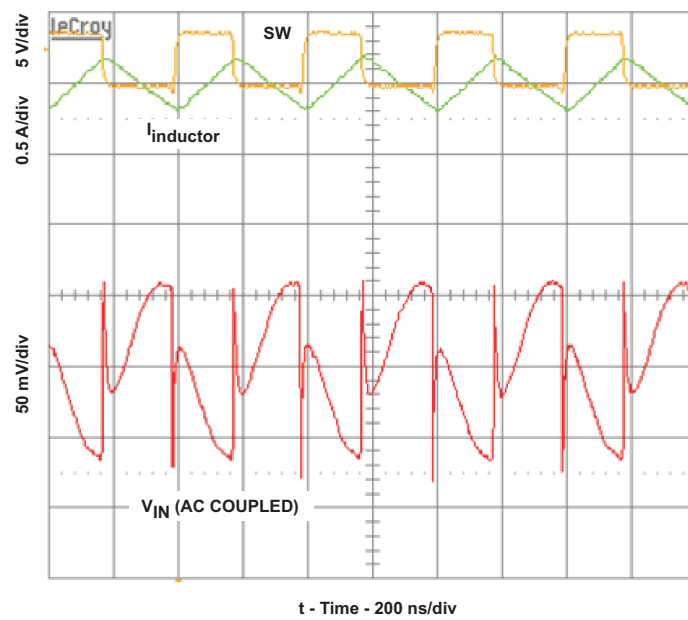


Figure 9. Input Voltage Ripple ($V_{IN} = 3.6V$, $V_{OUT} = 1.4V$, $I_{OUT} = 3A$)

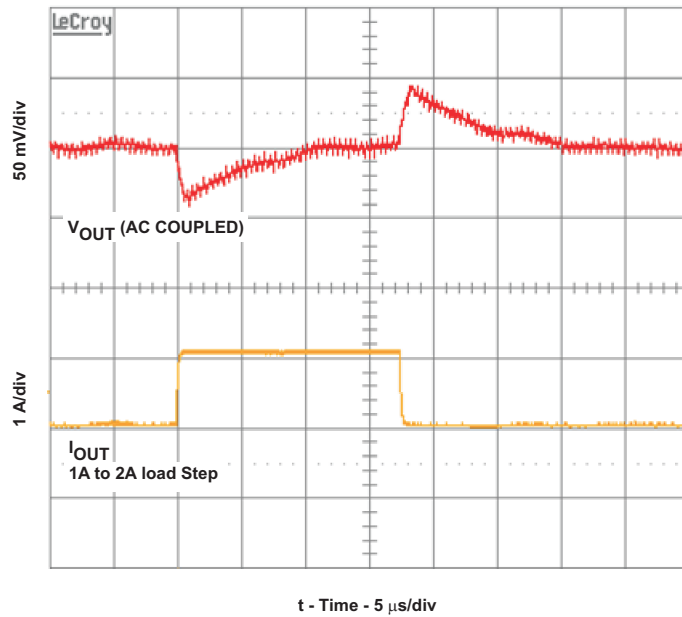


Figure 10. Load Transient Response ($V_{IN} = 3.6V$, $V_{OUT} = 1.4V$, $I_{OUT} = 1A$ to $2A$ step)

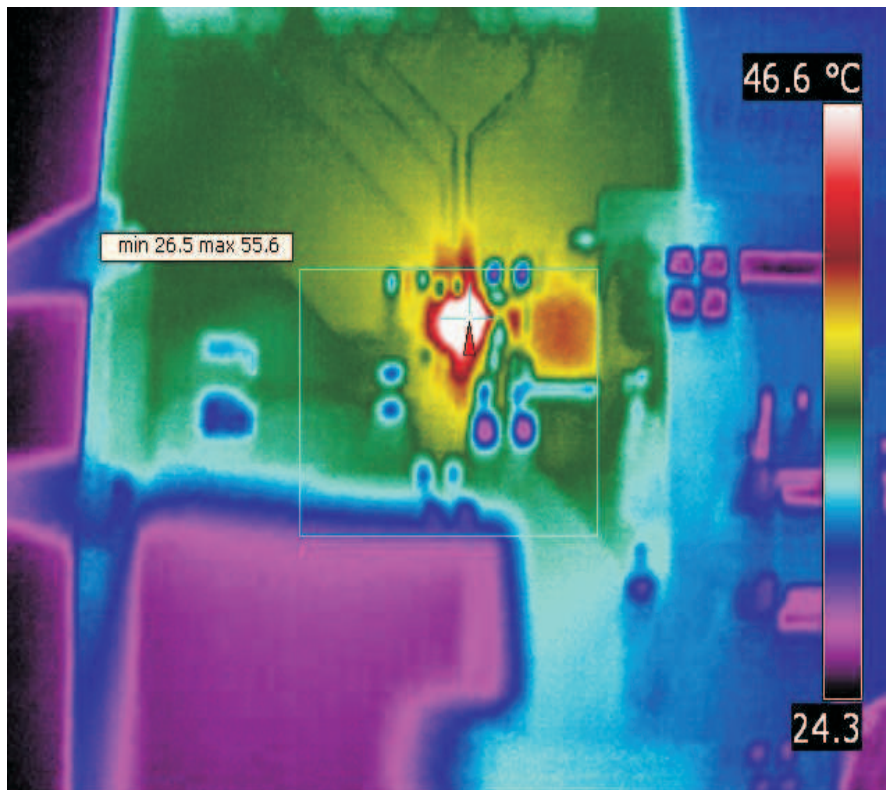


Figure 11. Thermal Performance ($V_{IN} = 3.6V$, $V_{OUT} = 1.4V$, $I_{OUT} = 3A$)

6 Board Layout

This section provides the TPS6236xEVM-655 board layout and illustrations.

Board layout is critical for all high-frequency, switch-mode power supplies. [Figure 12](#) through [Figure 15](#) show the board layout for the TPS6236xEVM-655 PCB. The nodes with high-switching frequencies and currents are kept as short as possible to minimize trace inductance. Careful attention has been given to the routing of high-frequency current loops and a single-point grounding scheme is used. Also, the majority of the heatsinking for this device occurs through the top layer traces and vias pulled from the IC's solder bumps that carry high currents. See the data sheet for specific layout guidelines.

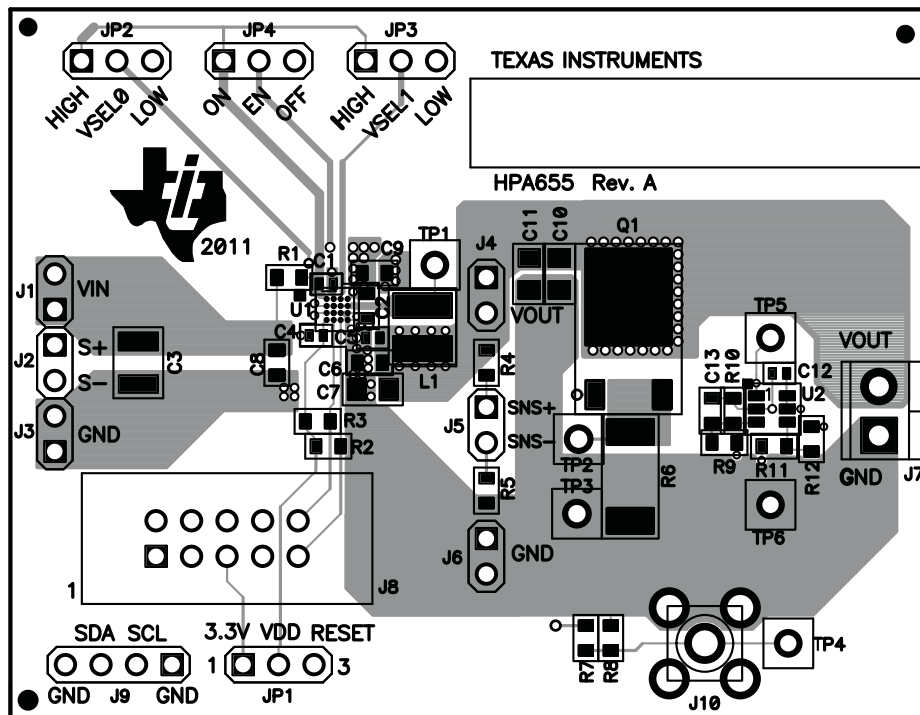


Figure 12. Assembly Layer

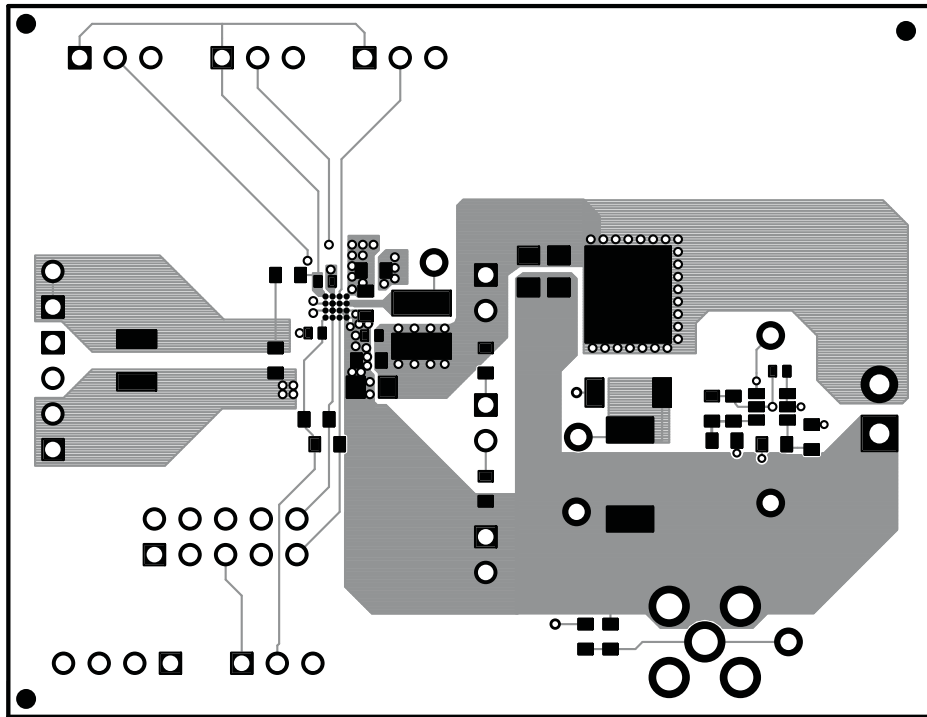


Figure 13. Top Layer

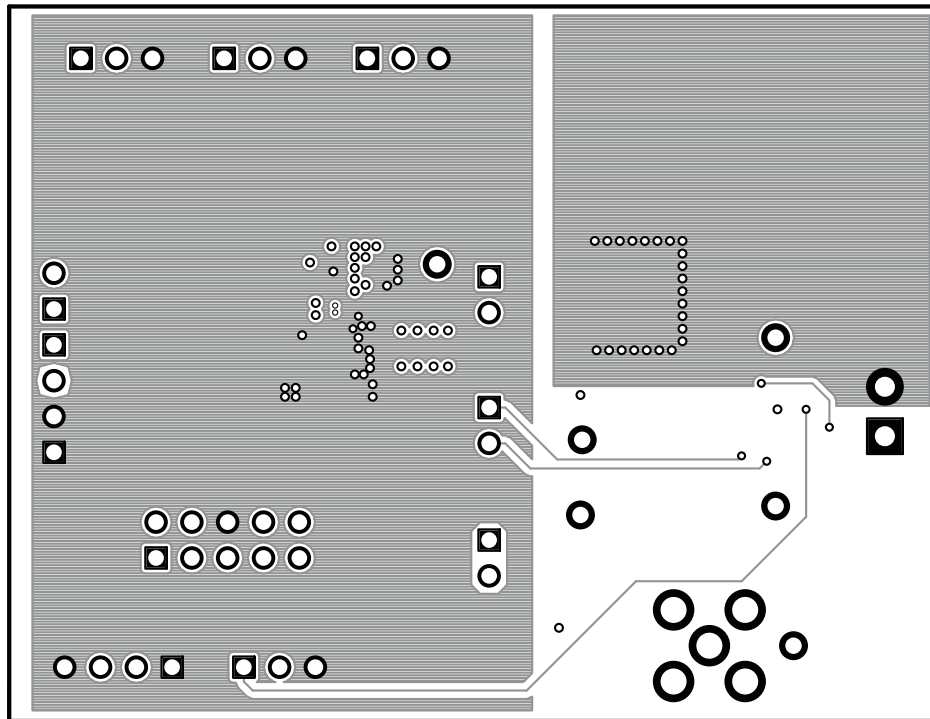


Figure 14. Layer 2

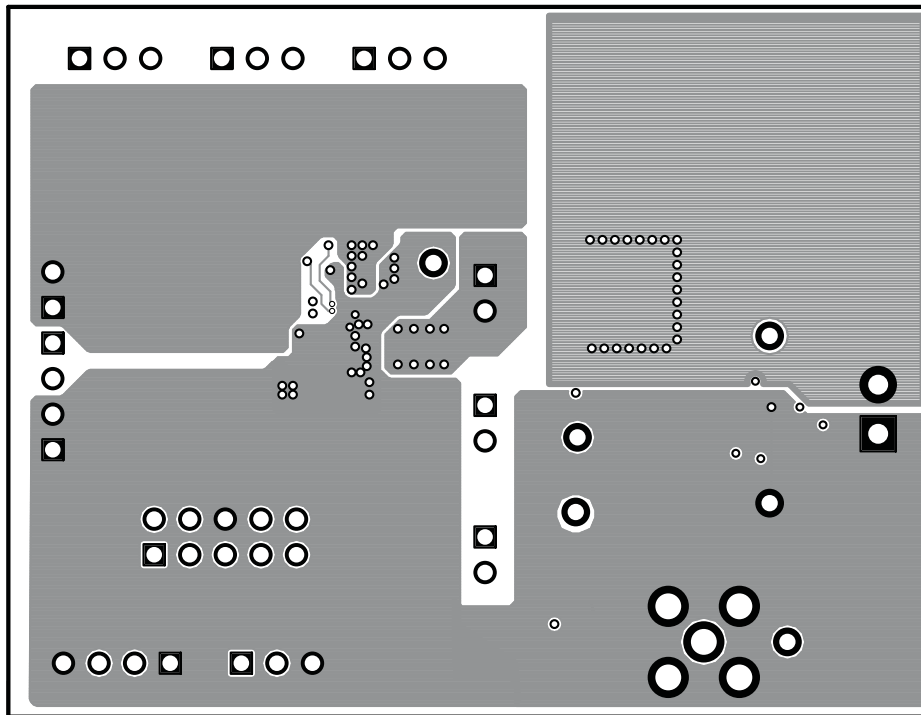


Figure 15. Layer 3

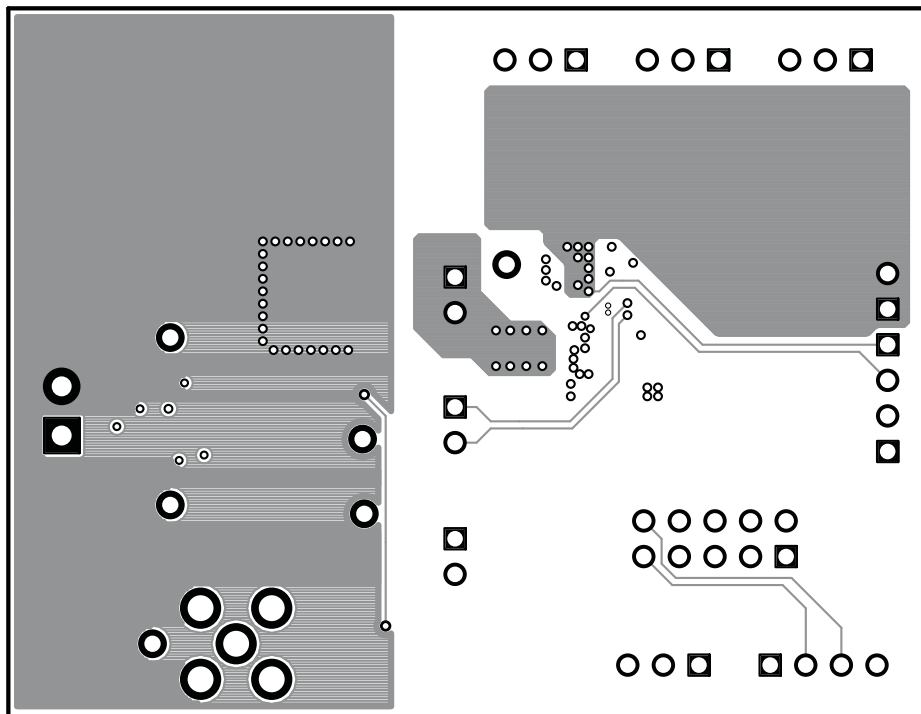


Figure 16. Bottom Layer

7 Schematic and Bill of Materials

This section provides the TPS6236xEVM-655 schematic and bill of materials. The bill of materials is provided in two tables. [Table 3](#) are the components required to build the TPS6236x solution. [Table 4](#) are the components used only to evaluate the TPS6236xEVM-655 solution.

7.1 Schematic

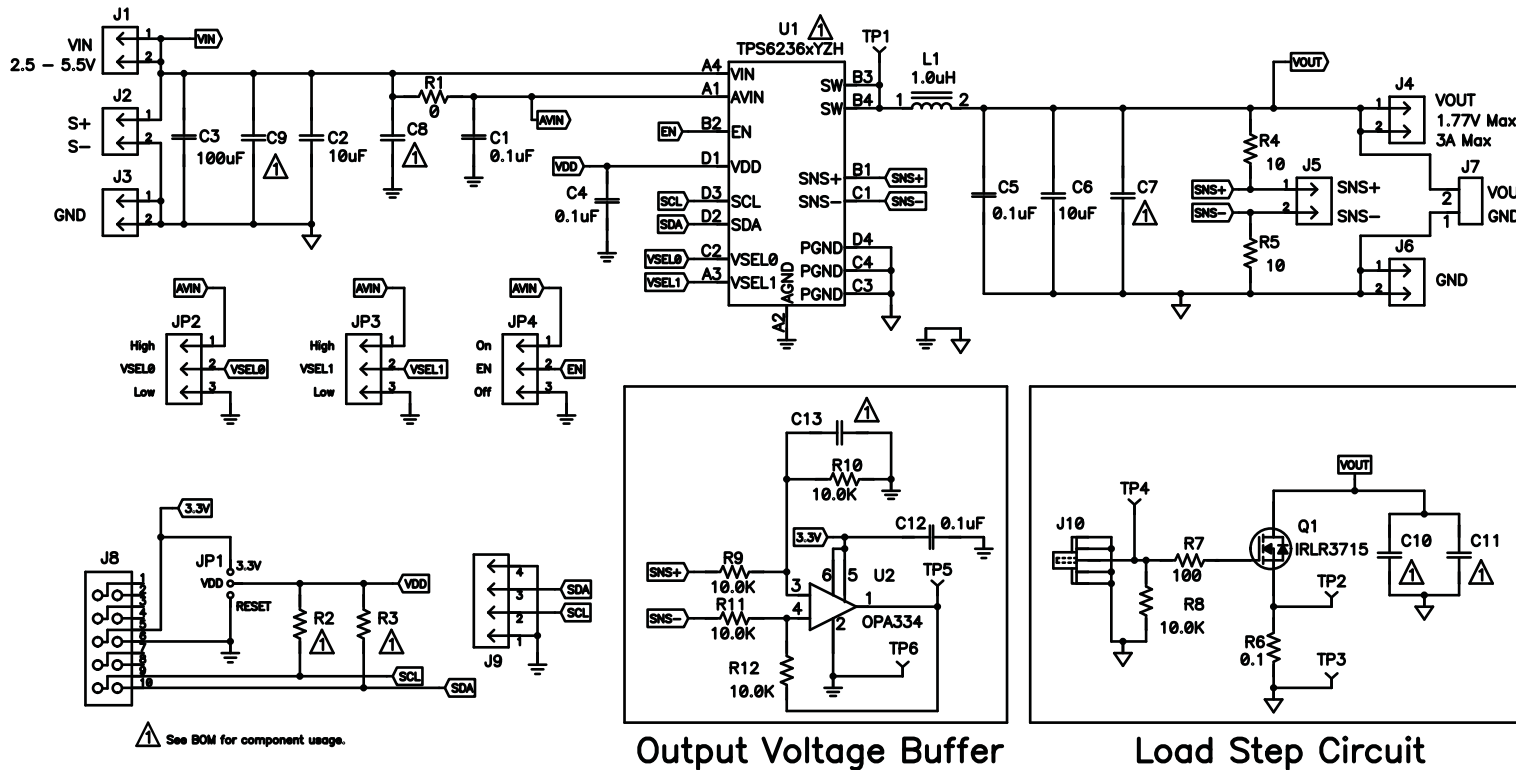


Figure 17. TPS6236xEVM-655 Schematic

7.2 Bill of Materials

Table 3. TPS6236x Solution Required Components

Count				RefDes	Value	Description	Size	Part Number	MFR
-001	-002	-003	-004						
3	3	3	3	C1, C4, C5	0.1 μ F	Capacitor, Ceramic, 10V, X5R, 20%	0402	Std	Std
2	2	2	2	C2, C6	10 μ F	Capacitor, Ceramic, 6.3V, X5R, 20%	0603	Std	Std
1	1	1	1	L1	1.0 μ H	Inductor, Power, 5.4 A, 10.8 m Ω , \pm 20%	0.157 x 0.157 inch	XFL4020-102ME	Coilcraft
1	0	0	0	U1	TPS62360YZH	IC, 3A Processor Supply Converter	BGA	TPS62360YZH	TI
0	1	0	0	U1	TPS62361BYZH	IC, 3A Processor Supply Converter	BGA	TPS62361BYZH	TI
0	0	1	0	U1	TPS62362YZH	IC, 3A Processor Supply Converter	BGA	TPS62362YZH	TI
0	0	0	1	U1	TPS62365YZH	IC, 3.5A Processor Supply Converter	BGA	TPS62365YZH	TI

Table 4. TPS6236xEVM-655 Evaluation Components

Count				RefDes	Value	Description	Size	Part Number	MFR
-001	-002	-003	-004						
1	1	1	1	C12	0.1 μ F	Capacitor, Ceramic, 10V, X5R, 20%	0402	Std	Std
1	1	1	1	C3	100 μ F	Capacitor, Ceramic, 6.3V, X5R, 20%	1210	Std	Std
0	0	0	0	C7, C10, C11	Open	Capacitor, Ceramic, 6.3V, X5R, 20%	0805	Std	Std
0	0	0	0	C8, C9	Open	Capacitor, Ceramic, 6.3V, X5R, 20%	0603	Std	Std
0	0	0	0	C13	Open	Capacitor, Ceramic, 25V, X7R, 10%	0603	Std	Std
1	1	1	1	Q1	IRLR3715	MOSFET, N-ch, 20V, 49A, 11 m Ω	DPAK	IRLR3715ZCPBF	IR
1	1	1	1	R1	0	Resistor, Chip, 1/10W	0603	Std	Std
0	0	0	0	R2, R3	Open	Resistor, Chip, 1/16W, 1%	0603	Std	Std
2	2	2	2	R4, R5	10	Resistor, Chip, 1/16W, 1%	0603	Std	Std
1	1	1	1	R6	0.1	Resistor, Chip, 1W, 1%	2512	Std	Std
1	1	1	1	R7	100	Resistor, Chip, 1/16W, 1%	0603	Std	Std
5	5	5	5	R8, R9, R10, R11, R12	10.0K	Resistor, Chip, 1/16W, 1%	0603	Std	Std
1	1	1	1	U2	OPA334	IC, 0.05 μ V/ $^{\circ}$ C Max, Single Supply Op Amp, Zero-Drift	SOT23-6	OPA334AIDBV	TI

7.3 Related Documentation From Texas Instruments

Processor Supply with \dot{I} C Compatible Interface and Remote Sense data sheet ([SLVSAU9](#))

Evaluation Board/Kit Important Notice

Texas Instruments (TI) provides the enclosed product(s) under the following conditions:

This evaluation board/kit is intended for use for **ENGINEERING DEVELOPMENT, DEMONSTRATION, OR EVALUATION PURPOSES ONLY** and is not considered by TI to be a finished end-product fit for general consumer use. Persons handling the product(s) must have electronics training and observe good engineering practice standards. As such, the goods being provided are not intended to be complete in terms of required design-, marketing-, and/or manufacturing-related protective considerations, including product safety and environmental measures typically found in end products that incorporate such semiconductor components or circuit boards. This evaluation board/kit does not fall within the scope of the European Union directives regarding electromagnetic compatibility, restricted substances (RoHS), recycling (WEEE), FCC, CE or UL, and therefore may not meet the technical requirements of these directives or other related directives.

Should this evaluation board/kit not meet the specifications indicated in the User's Guide, the board/kit may be returned within 30 days from the date of delivery for a full refund. **THE FOREGOING WARRANTY IS THE EXCLUSIVE WARRANTY MADE BY SELLER TO BUYER AND IS IN LIEU OF ALL OTHER WARRANTIES, EXPRESSED, IMPLIED, OR STATUTORY, INCLUDING ANY WARRANTY OF MERCHANTABILITY OR FITNESS FOR ANY PARTICULAR PURPOSE.**

The user assumes all responsibility and liability for proper and safe handling of the goods. Further, the user indemnifies TI from all claims arising from the handling or use of the goods. Due to the open construction of the product, it is the user's responsibility to take any and all appropriate precautions with regard to electrostatic discharge.

EXCEPT TO THE EXTENT OF THE INDEMNITY SET FORTH ABOVE, NEITHER PARTY SHALL BE LIABLE TO THE OTHER FOR ANY INDIRECT, SPECIAL, INCIDENTAL, OR CONSEQUENTIAL DAMAGES.

TI currently deals with a variety of customers for products, and therefore our arrangement with the user **is not exclusive.**

TI assumes **no liability for applications assistance, customer product design, software performance, or infringement of patents or services described herein.**

Please read the User's Guide and, specifically, the Warnings and Restrictions notice in the User's Guide prior to handling the product. This notice contains important safety information about temperatures and voltages. For additional information on TI's environmental and/or safety programs, please contact the TI application engineer or visit www.ti.com/esh.

No license is granted under any patent right or other intellectual property right of TI covering or relating to any machine, process, or combination in which such TI products or services might be or are used.

FCC Warning

This evaluation board/kit is intended for use for **ENGINEERING DEVELOPMENT, DEMONSTRATION, OR EVALUATION PURPOSES ONLY** and is not considered by TI to be a finished end-product fit for general consumer use. It generates, uses, and can radiate radio frequency energy and has not been tested for compliance with the limits of computing devices pursuant to part 15 of FCC rules, which are designed to provide reasonable protection against radio frequency interference. Operation of this equipment in other environments may cause interference with radio communications, in which case the user at his own expense will be required to take whatever measures may be required to correct this interference.

EVM Warnings and Restrictions

It is important to operate this EVM within the input voltage range of 2.5 V to 5.5 V and the output voltage range of 0.5 V to 1.77 V . Exceeding the specified input range may cause unexpected operation and/or irreversible damage to the EVM. If there are questions concerning the input range, please contact a TI field representative prior to connecting the input power.

Applying loads outside of the specified output range may result in unintended operation and/or possible permanent damage to the EVM. Please consult the EVM User's Guide prior to connecting any load to the EVM output. If there is uncertainty as to the load specification, please contact a TI field representative.

During normal operation, some circuit components may have case temperatures greater than 85°C. The EVM is designed to operate properly with certain components above 85°C as long as the input and output ranges are maintained. These components include but are not limited to linear regulators, switching transistors, pass transistors, and current sense resistors. These types of devices can be identified using the EVM schematic located in the EVM User's Guide. When placing measurement probes near these devices during operation, please be aware that these devices may be very warm to the touch.

Mailing Address: Texas Instruments, Post Office Box 655303, Dallas, Texas 75265
Copyright © 2011, Texas Instruments Incorporated

STANDARD TERMS FOR EVALUATION MODULES

1. *Delivery:* TI delivers TI evaluation boards, kits, or modules, including any accompanying demonstration software, components, and/or documentation which may be provided together or separately (collectively, an "EVM" or "EVMs") to the User ("User") in accordance with the terms set forth herein. User's acceptance of the EVM is expressly subject to the following terms.
 - 1.1 EVMs are intended solely for product or software developers for use in a research and development setting to facilitate feasibility evaluation, experimentation, or scientific analysis of TI semiconductors products. EVMs have no direct function and are not finished products. EVMs shall not be directly or indirectly assembled as a part or subassembly in any finished product. For clarification, any software or software tools provided with the EVM ("Software") shall not be subject to the terms and conditions set forth herein but rather shall be subject to the applicable terms that accompany such Software
 - 1.2 EVMs are not intended for consumer or household use. EVMs may not be sold, sublicensed, leased, rented, loaned, assigned, or otherwise distributed for commercial purposes by Users, in whole or in part, or used in any finished product or production system.
2. *Limited Warranty and Related Remedies/Disclaimers:*
 - 2.1 These terms do not apply to Software. The warranty, if any, for Software is covered in the applicable Software License Agreement.
 - 2.2 TI warrants that the TI EVM will conform to TI's published specifications for ninety (90) days after the date TI delivers such EVM to User. Notwithstanding the foregoing, TI shall not be liable for a nonconforming EVM if (a) the nonconformity was caused by neglect, misuse or mistreatment by an entity other than TI, including improper installation or testing, or for any EVMs that have been altered or modified in any way by an entity other than TI, (b) the nonconformity resulted from User's design, specifications or instructions for such EVMs or improper system design, or (c) User has not paid on time. Testing and other quality control techniques are used to the extent TI deems necessary. TI does not test all parameters of each EVM. User's claims against TI under this Section 2 are void if User fails to notify TI of any apparent defects in the EVMs within ten (10) business days after delivery, or of any hidden defects with ten (10) business days after the defect has been detected.
 - 2.3 TI's sole liability shall be at its option to repair or replace EVMs that fail to conform to the warranty set forth above, or credit User's account for such EVM. TI's liability under this warranty shall be limited to EVMs that are returned during the warranty period to the address designated by TI and that are determined by TI not to conform to such warranty. If TI elects to repair or replace such EVM, TI shall have a reasonable time to repair such EVM or provide replacements. Repaired EVMs shall be warranted for the remainder of the original warranty period. Replaced EVMs shall be warranted for a new full ninety (90) day warranty period.

WARNING

Evaluation Kits are intended solely for use by technically qualified, professional electronics experts who are familiar with the dangers and application risks associated with handling electrical mechanical components, systems, and subsystems.

User shall operate the Evaluation Kit within TI's recommended guidelines and any applicable legal or environmental requirements as well as reasonable and customary safeguards. Failure to set up and/or operate the Evaluation Kit within TI's recommended guidelines may result in personal injury or death or property damage. Proper set up entails following TI's instructions for electrical ratings of interface circuits such as input, output and electrical loads.

NOTE:

EXPOSURE TO ELECTROSTATIC DISCHARGE (ESD) MAY CAUSE DEGRADATION OR FAILURE OF THE EVALUATION KIT; TI RECOMMENDS STORAGE OF THE EVALUATION KIT IN A PROTECTIVE ESD BAG.

3 Regulatory Notices:

3.1 United States

3.1.1 Notice applicable to EVMs not FCC-Approved:

FCC NOTICE: This kit is designed to allow product developers to evaluate electronic components, circuitry, or software associated with the kit to determine whether to incorporate such items in a finished product and software developers to write software applications for use with the end product. This kit is not a finished product and when assembled may not be resold or otherwise marketed unless all required FCC equipment authorizations are first obtained. Operation is subject to the condition that this product not cause harmful interference to licensed radio stations and that this product accept harmful interference. Unless the assembled kit is designed to operate under part 15, part 18 or part 95 of this chapter, the operator of the kit must operate under the authority of an FCC license holder or must secure an experimental authorization under part 5 of this chapter.

3.1.2 For EVMs annotated as FCC – FEDERAL COMMUNICATIONS COMMISSION Part 15 Compliant:

CAUTION

This device complies with part 15 of the FCC Rules. Operation is subject to the following two conditions: (1) This device may not cause harmful interference, and (2) this device must accept any interference received, including interference that may cause undesired operation.

Changes or modifications not expressly approved by the party responsible for compliance could void the user's authority to operate the equipment.

FCC Interference Statement for Class A EVM devices

NOTE: This equipment has been tested and found to comply with the limits for a Class A digital device, pursuant to part 15 of the FCC Rules. These limits are designed to provide reasonable protection against harmful interference when the equipment is operated in a commercial environment. This equipment generates, uses, and can radiate radio frequency energy and, if not installed and used in accordance with the instruction manual, may cause harmful interference to radio communications. Operation of this equipment in a residential area is likely to cause harmful interference in which case the user will be required to correct the interference at his own expense.

FCC Interference Statement for Class B EVM devices

NOTE: This equipment has been tested and found to comply with the limits for a Class B digital device, pursuant to part 15 of the FCC Rules. These limits are designed to provide reasonable protection against harmful interference in a residential installation. This equipment generates, uses and can radiate radio frequency energy and, if not installed and used in accordance with the instructions, may cause harmful interference to radio communications. However, there is no guarantee that interference will not occur in a particular installation. If this equipment does cause harmful interference to radio or television reception, which can be determined by turning the equipment off and on, the user is encouraged to try to correct the interference by one or more of the following measures:

- Reorient or relocate the receiving antenna.
- Increase the separation between the equipment and receiver.
- Connect the equipment into an outlet on a circuit different from that to which the receiver is connected.
- Consult the dealer or an experienced radio/TV technician for help.

3.2 Canada

3.2.1 For EVMs issued with an Industry Canada Certificate of Conformance to RSS-210 or RSS-247

Concerning EVMs Including Radio Transmitters:

This device complies with Industry Canada license-exempt RSSs. Operation is subject to the following two conditions:

(1) this device may not cause interference, and (2) this device must accept any interference, including interference that may cause undesired operation of the device.

Concernant les EVMs avec appareils radio:

Le présent appareil est conforme aux CNR d'Industrie Canada applicables aux appareils radio exempts de licence. L'exploitation est autorisée aux deux conditions suivantes: (1) l'appareil ne doit pas produire de brouillage, et (2) l'utilisateur de l'appareil doit accepter tout brouillage radioélectrique subi, même si le brouillage est susceptible d'en compromettre le fonctionnement.

Concerning EVMs Including Detachable Antennas:

Under Industry Canada regulations, this radio transmitter may only operate using an antenna of a type and maximum (or lesser) gain approved for the transmitter by Industry Canada. To reduce potential radio interference to other users, the antenna type and its gain should be so chosen that the equivalent isotropically radiated power (e.i.r.p.) is not more than that necessary for successful communication. This radio transmitter has been approved by Industry Canada to operate with the antenna types listed in the user guide with the maximum permissible gain and required antenna impedance for each antenna type indicated. Antenna types not included in this list, having a gain greater than the maximum gain indicated for that type, are strictly prohibited for use with this device.

Concernant les EVMs avec antennes détachables

Conformément à la réglementation d'Industrie Canada, le présent émetteur radio peut fonctionner avec une antenne d'un type et d'un gain maximal (ou inférieur) approuvé pour l'émetteur par Industrie Canada. Dans le but de réduire les risques de brouillage radioélectrique à l'intention des autres utilisateurs, il faut choisir le type d'antenne et son gain de sorte que la puissance isotrope rayonnée équivalente (p.i.r.e.) ne dépasse pas l'intensité nécessaire à l'établissement d'une communication satisfaisante. Le présent émetteur radio a été approuvé par Industrie Canada pour fonctionner avec les types d'antenne énumérés dans le manuel d'usage et ayant un gain admissible maximal et l'impédance requise pour chaque type d'antenne. Les types d'antenne non inclus dans cette liste, ou dont le gain est supérieur au gain maximal indiqué, sont strictement interdits pour l'exploitation de l'émetteur.

3.3 Japan

3.3.1 *Notice for EVMs delivered in Japan:* Please see http://www.tij.co.jp/lstds/ti_ja/general/eStore/notice_01.page 日本国内に輸入される評価用キット、ボードについては、次のところをご覧ください。

<https://www.ti.com/ja-jp/legal/notice-for-evaluation-kits-delivered-in-japan.html>

3.3.2 *Notice for Users of EVMs Considered "Radio Frequency Products" in Japan:* EVMs entering Japan may not be certified by TI as conforming to Technical Regulations of Radio Law of Japan.

If User uses EVMs in Japan, not certified to Technical Regulations of Radio Law of Japan, User is required to follow the instructions set forth by Radio Law of Japan, which includes, but is not limited to, the instructions below with respect to EVMs (which for the avoidance of doubt are stated strictly for convenience and should be verified by User):

1. Use EVMs in a shielded room or any other test facility as defined in the notification #173 issued by Ministry of Internal Affairs and Communications on March 28, 2006, based on Sub-section 1.1 of Article 6 of the Ministry's Rule for Enforcement of Radio Law of Japan,
2. Use EVMs only after User obtains the license of Test Radio Station as provided in Radio Law of Japan with respect to EVMs, or
3. Use of EVMs only after User obtains the Technical Regulations Conformity Certification as provided in Radio Law of Japan with respect to EVMs. Also, do not transfer EVMs, unless User gives the same notice above to the transferee. Please note that if User does not follow the instructions above, User will be subject to penalties of Radio Law of Japan.

【無線電波を送信する製品の開発キットをお使いになる際の注意事項】 開発キットの中には技術基準適合証明を受けていないものがあります。技術適合証明を受けていないものご使用に際しては、電波法遵守のため、以下のいずれかの措置を取っていただく必要がありますのでご注意ください。

1. 電波法施行規則第6条第1項第1号に基づく平成18年3月28日総務省告示第173号で定められた電波暗室等の試験設備でご使用いただく。
2. 実験局の免許を取得後ご使用いただく。
3. 技術基準適合証明を取得後ご使用いただく。

なお、本製品は、上記の「ご使用にあたっての注意」を譲渡先、移転先に通知しない限り、譲渡、移転できないものとします。

上記を遵守頂けない場合は、電波法の罰則が適用される可能性があることをご留意ください。日本テキサス・イ

ンスツルメンツ株式会社

東京都新宿区西新宿 6 丁目 2 4 番 1 号

西新宿三井ビル

3.3.3 *Notice for EVMs for Power Line Communication:* Please see http://www.tij.co.jp/lstds/ti_ja/general/eStore/notice_02.page

電力線搬送波通信についての開発キットをお使いになる際の注意事項については、次のところをご覧ください。 <https://www.ti.com/ja-jp/legal/notice-for-evaluation-kits-for-power-line-communication.html>

3.4 European Union

3.4.1 *For EVMs subject to EU Directive 2014/30/EU (Electromagnetic Compatibility Directive):*

This is a class A product intended for use in environments other than domestic environments that are connected to a low-voltage power-supply network that supplies buildings used for domestic purposes. In a domestic environment this product may cause radio interference in which case the user may be required to take adequate measures.

-
4. *EVM Use Restrictions and Warnings:*
 - 4.1 EVMS ARE NOT FOR USE IN FUNCTIONAL SAFETY AND/OR SAFETY CRITICAL EVALUATIONS, INCLUDING BUT NOT LIMITED TO EVALUATIONS OF LIFE SUPPORT APPLICATIONS.
 - 4.2 User must read and apply the user guide and other available documentation provided by TI regarding the EVM prior to handling or using the EVM, including without limitation any warning or restriction notices. The notices contain important safety information related to, for example, temperatures and voltages.
 - 4.3 *Safety-Related Warnings and Restrictions:*
 - 4.3.1 User shall operate the EVM within TI's recommended specifications and environmental considerations stated in the user guide, other available documentation provided by TI, and any other applicable requirements and employ reasonable and customary safeguards. Exceeding the specified performance ratings and specifications (including but not limited to input and output voltage, current, power, and environmental ranges) for the EVM may cause personal injury or death, or property damage. If there are questions concerning performance ratings and specifications, User should contact a TI field representative prior to connecting interface electronics including input power and intended loads. Any loads applied outside of the specified output range may also result in unintended and/or inaccurate operation and/or possible permanent damage to the EVM and/or interface electronics. Please consult the EVM user guide prior to connecting any load to the EVM output. If there is uncertainty as to the load specification, please contact a TI field representative. During normal operation, even with the inputs and outputs kept within the specified allowable ranges, some circuit components may have elevated case temperatures. These components include but are not limited to linear regulators, switching transistors, pass transistors, current sense resistors, and heat sinks, which can be identified using the information in the associated documentation. When working with the EVM, please be aware that the EVM may become very warm.
 - 4.3.2 EVMs are intended solely for use by technically qualified, professional electronics experts who are familiar with the dangers and application risks associated with handling electrical mechanical components, systems, and subsystems. User assumes all responsibility and liability for proper and safe handling and use of the EVM by User or its employees, affiliates, contractors or designees. User assumes all responsibility and liability to ensure that any interfaces (electronic and/or mechanical) between the EVM and any human body are designed with suitable isolation and means to safely limit accessible leakage currents to minimize the risk of electrical shock hazard. User assumes all responsibility and liability for any improper or unsafe handling or use of the EVM by User or its employees, affiliates, contractors or designees.
 - 4.4 User assumes all responsibility and liability to determine whether the EVM is subject to any applicable international, federal, state, or local laws and regulations related to User's handling and use of the EVM and, if applicable, User assumes all responsibility and liability for compliance in all respects with such laws and regulations. User assumes all responsibility and liability for proper disposal and recycling of the EVM consistent with all applicable international, federal, state, and local requirements.
 5. *Accuracy of Information:* To the extent TI provides information on the availability and function of EVMs, TI attempts to be as accurate as possible. However, TI does not warrant the accuracy of EVM descriptions, EVM availability or other information on its websites as accurate, complete, reliable, current, or error-free.
 6. *Disclaimers:*
 - 6.1 EXCEPT AS SET FORTH ABOVE, EVMS AND ANY MATERIALS PROVIDED WITH THE EVM (INCLUDING, BUT NOT LIMITED TO, REFERENCE DESIGNS AND THE DESIGN OF THE EVM ITSELF) ARE PROVIDED "AS IS" AND "WITH ALL FAULTS." TI DISCLAIMS ALL OTHER WARRANTIES, EXPRESS OR IMPLIED, REGARDING SUCH ITEMS, INCLUDING BUT NOT LIMITED TO ANY EPIDEMIC FAILURE WARRANTY OR IMPLIED WARRANTIES OF MERCHANTABILITY OR FITNESS FOR A PARTICULAR PURPOSE OR NON-INFRINGEMENT OF ANY THIRD PARTY PATENTS, COPYRIGHTS, TRADE SECRETS OR OTHER INTELLECTUAL PROPERTY RIGHTS.
 - 6.2 EXCEPT FOR THE LIMITED RIGHT TO USE THE EVM SET FORTH HEREIN, NOTHING IN THESE TERMS SHALL BE CONSTRUED AS GRANTING OR CONFERRING ANY RIGHTS BY LICENSE, PATENT, OR ANY OTHER INDUSTRIAL OR INTELLECTUAL PROPERTY RIGHT OF TI, ITS SUPPLIERS/LICENSORS OR ANY OTHER THIRD PARTY, TO USE THE EVM IN ANY FINISHED END-USER OR READY-TO-USE FINAL PRODUCT, OR FOR ANY INVENTION, DISCOVERY OR IMPROVEMENT, REGARDLESS OF WHEN MADE, CONCEIVED OR ACQUIRED.
 7. *USER'S INDEMNITY OBLIGATIONS AND REPRESENTATIONS.* USER WILL DEFEND, INDEMNIFY AND HOLD TI, ITS LICENSORS AND THEIR REPRESENTATIVES HARMLESS FROM AND AGAINST ANY AND ALL CLAIMS, DAMAGES, LOSSES, EXPENSES, COSTS AND LIABILITIES (COLLECTIVELY, "CLAIMS") ARISING OUT OF OR IN CONNECTION WITH ANY HANDLING OR USE OF THE EVM THAT IS NOT IN ACCORDANCE WITH THESE TERMS. THIS OBLIGATION SHALL APPLY WHETHER CLAIMS ARISE UNDER STATUTE, REGULATION, OR THE LAW OF TORT, CONTRACT OR ANY OTHER LEGAL THEORY, AND EVEN IF THE EVM FAILS TO PERFORM AS DESCRIBED OR EXPECTED.

8. *Limitations on Damages and Liability:*

8.1 *General Limitations.* IN NO EVENT SHALL TI BE LIABLE FOR ANY SPECIAL, COLLATERAL, INDIRECT, PUNITIVE, INCIDENTAL, CONSEQUENTIAL, OR EXEMPLARY DAMAGES IN CONNECTION WITH OR ARISING OUT OF THESE TERMS OR THE USE OF THE EVMS , REGARDLESS OF WHETHER TI HAS BEEN ADVISED OF THE POSSIBILITY OF SUCH DAMAGES. EXCLUDED DAMAGES INCLUDE, BUT ARE NOT LIMITED TO, COST OF REMOVAL OR REINSTALLATION, ANCILLARY COSTS TO THE PROCUREMENT OF SUBSTITUTE GOODS OR SERVICES, RETESTING, OUTSIDE COMPUTER TIME, LABOR COSTS, LOSS OF GOODWILL, LOSS OF PROFITS, LOSS OF SAVINGS, LOSS OF USE, LOSS OF DATA, OR BUSINESS INTERRUPTION. NO CLAIM, SUIT OR ACTION SHALL BE BROUGHT AGAINST TI MORE THAN TWELVE (12) MONTHS AFTER THE EVENT THAT GAVE RISE TO THE CAUSE OF ACTION HAS OCCURRED.

8.2 *Specific Limitations.* IN NO EVENT SHALL TI'S AGGREGATE LIABILITY FROM ANY USE OF AN EVM PROVIDED HEREUNDER, INCLUDING FROM ANY WARRANTY, INDEMNITY OR OTHER OBLIGATION ARISING OUT OF OR IN CONNECTION WITH THESE TERMS, , EXCEED THE TOTAL AMOUNT PAID TO TI BY USER FOR THE PARTICULAR EVM(S) AT ISSUE DURING THE PRIOR TWELVE (12) MONTHS WITH RESPECT TO WHICH LOSSES OR DAMAGES ARE CLAIMED. THE EXISTENCE OF MORE THAN ONE CLAIM SHALL NOT ENLARGE OR EXTEND THIS LIMIT.

9. *Return Policy.* Except as otherwise provided, TI does not offer any refunds, returns, or exchanges. Furthermore, no return of EVM(s) will be accepted if the package has been opened and no return of the EVM(s) will be accepted if they are damaged or otherwise not in a resalable condition. If User feels it has been incorrectly charged for the EVM(s) it ordered or that delivery violates the applicable order, User should contact TI. All refunds will be made in full within thirty (30) working days from the return of the components(s), excluding any postage or packaging costs.

10. *Governing Law:* These terms and conditions shall be governed by and interpreted in accordance with the laws of the State of Texas, without reference to conflict-of-laws principles. User agrees that non-exclusive jurisdiction for any dispute arising out of or relating to these terms and conditions lies within courts located in the State of Texas and consents to venue in Dallas County, Texas. Notwithstanding the foregoing, any judgment may be enforced in any United States or foreign court, and TI may seek injunctive relief in any United States or foreign court.

Mailing Address: Texas Instruments, Post Office Box 655303, Dallas, Texas 75265
Copyright © 2023, Texas Instruments Incorporated

IMPORTANT NOTICE AND DISCLAIMER

TI PROVIDES TECHNICAL AND RELIABILITY DATA (INCLUDING DATASHEETS), DESIGN RESOURCES (INCLUDING REFERENCE DESIGNS), APPLICATION OR OTHER DESIGN ADVICE, WEB TOOLS, SAFETY INFORMATION, AND OTHER RESOURCES "AS IS" AND WITH ALL FAULTS, AND DISCLAIMS ALL WARRANTIES, EXPRESS AND IMPLIED, INCLUDING WITHOUT LIMITATION ANY IMPLIED WARRANTIES OF MERCHANTABILITY, FITNESS FOR A PARTICULAR PURPOSE OR NON-INFRINGEMENT OF THIRD PARTY INTELLECTUAL PROPERTY RIGHTS.

These resources are intended for skilled developers designing with TI products. You are solely responsible for (1) selecting the appropriate TI products for your application, (2) designing, validating and testing your application, and (3) ensuring your application meets applicable standards, and any other safety, security, regulatory or other requirements.

These resources are subject to change without notice. TI grants you permission to use these resources only for development of an application that uses the TI products described in the resource. Other reproduction and display of these resources is prohibited. No license is granted to any other TI intellectual property right or to any third party intellectual property right. TI disclaims responsibility for, and you fully indemnify TI and its representatives against any claims, damages, costs, losses, and liabilities arising out of your use of these resources.

TI's products are provided subject to [TI's Terms of Sale](#), [TI's General Quality Guidelines](#), or other applicable terms available either on ti.com or provided in conjunction with such TI products. TI's provision of these resources does not expand or otherwise alter TI's applicable warranties or warranty disclaimers for TI products. Unless TI explicitly designates a product as custom or customer-specified, TI products are standard, catalog, general purpose devices.

TI objects to and rejects any additional or different terms you may propose.

Copyright © 2026, Texas Instruments Incorporated

Last updated 10/2025