

# **Chipscale-Packaged bq24165, 24166, 24167 Evaluation Modules**

The bq24165, 24166, 24167 evaluation module is a complete charger module for evaluating a compact, flexible, high-efficiency, USB-friendly, switch-mode charge management solution for single-cell, Li-ion and Li-polymer batteries used in a wide range of portable applications.

## **Contents**

1	Introduction .....	2
	1.1 bq2416x IC Features .....	2
	1.2 bq24165, 24166, 24167 EVM Features .....	2
	1.3 Schematic .....	3
	1.4 I/O Description .....	4
	1.5 Test Points .....	4
	1.6 Control and Key Parameters Setting .....	5
	1.7 Recommended Operating Conditions .....	5
2	Test Summary .....	6
	2.1 Definitions .....	6
	2.2 Recommended Test Equipment .....	6
	2.3 Recommended Test Equipment Setup .....	7
	2.4 Recommended Test Procedure .....	8
3	Printed-Circuit Board Layout Guideline .....	10
4	Bill of Materials and Board Layout .....	11
	4.1 Bill of Materials .....	11
	4.2 Board Layout .....	13

## **List of Figures**

1	bq24165/166/167EVM (HPA741) Schematic.....	3
2	BAT Load (PR1010) Schematic.....	7
3	Original Test Setup for bq24165/166/167 EVM (HPA741) .....	8
4	Top Assembly Layer .....	13
5	Top Layer .....	13
6	Bottom Layer.....	14
7	First Internal Layer .....	14
8	Second Internal Layer .....	15

## **List of Tables**

1	Bill of Materials - HPA741A .....	11
---	-----------------------------------	----

## 1 Introduction

### 1.1 bq2416x IC Features

The bq24165, 24166, 24167 integrates a synchronous PWM controller, power MOSFETs, input current sensing, high-accuracy current and voltage regulation, charge termination and power path management into a chipscale package. Key integrated circuit (IC) features include:

- High-efficiency, fully integrated, NMOS-NMOS, synchronous buck charger with 1.5-MHz frequency
- Integrated power FETs for up to 2.5-A charge rate
- Power path management between battery and system voltages

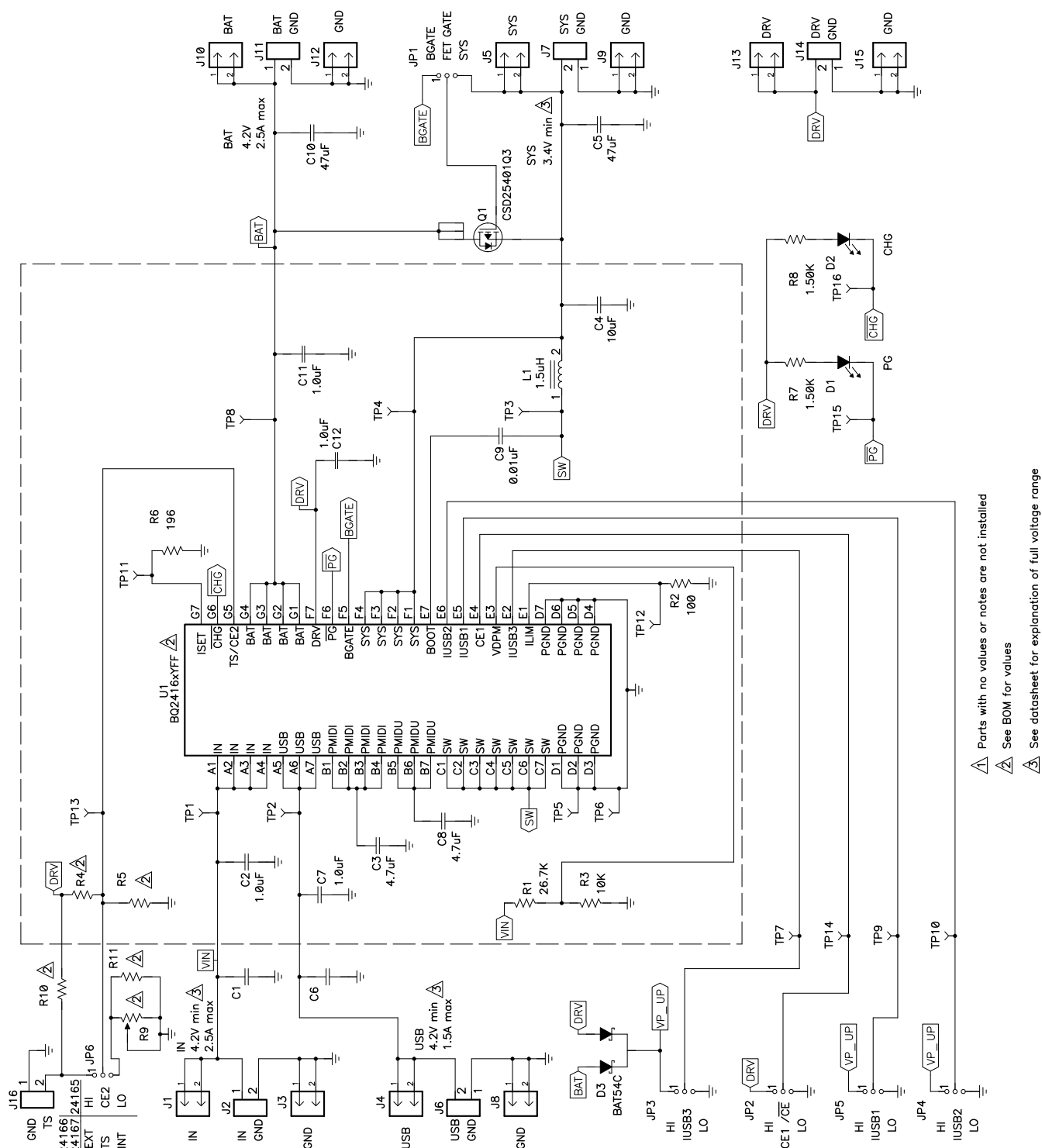
For details, see the bq24165, 24166, 24167 data sheet ([SLUSAP4](#)).

### 1.2 bq24165, 24166, 24167 EVM Features

The bq24165, 24166, 24167 evaluation module (EVM) is a complete charger module for evaluating compact, flexible, high-efficiency, USB-friendly, switch-mode battery charge and power path management solution for single-cell, Li-ion and Li-polymer battery-powered systems used in a wide range of portable applications. Key EVM features include:

- Programmable charge current, input current on, and  $V_{INDPM}$  threshold using jumpers
- Input power connectors for both USB input and ac adapter
- Programmable charge current, input current on, and  $V_{INDPM}$  threshold using jumpers
- IN operating range of 4.2 V – 10 V
- USB operating range of 4.2 V – 6 V
- LED indication for status signals
- Test points for key signals available for testing purposes. Easy probe hook-up

## 1.3 Schematic



**Figure 1. bq24165/166/167EVM (HPA741) Schematic**

NOTE: EVMs with a printed-circuit board label that contain the suffix -X may have been assembled with incorrectly marked ICs. Regardless of the IC's marking, the EVM was assembled with the correct part number as specified in the EVM bill of material.

## 1.4 I/O Description

Header/Terminal Block	Description
J1-IN	Adapter positive header
J2-IN	Adapter positive terminal
J2-GND	Adapter negative terminal
J3-GND	Adapter negative header
J4-USB	USB positive header
J5-SYS	System output positive header
J6-USB	USB positive terminal
J6-GND	USB negative terminal
J7-SYS	System output positive terminal
J7-GND	System output negative terminal
J8-GND	USB negative header
J9-GND	System output negative header
J10-BAT+	Battery positive header
J11-BAT+	Battery positive terminal
J11-GND	Battery negative terminal
J12-GND	Battery negative header
J13-DRV	DRV reference voltage positive header
J14-DRV	DRV reference voltage positive terminal
J14-GND	DRV reference voltage negative terminal
J15-GND	DRV reference voltage negative header
J16-IN	External thermistor positive terminal
J16-GND	Ground connection for external thermistor

## 1.5 Test Points

Test Point	Description
TP1	Kelvin to IN
TP2	Kelvin to USB
TP3	SW
TP4	Kelvin to SYS
TP5	GND
TP6	GND
TP7	IUSB3
TP8	Kelvin to BAT
TP9	IUSB1
TP10	IUSB2
TP11	ISSET
TP12	ILIM
TP13	$\overline{CE2}$ for bq24165 or TS for bq24166/167
TP14	$\overline{CE1}$ for bq24165 or $\overline{CE}$ for bq24166/167

## 1.6 Control and Key Parameters Setting

IC	Jumper	Description	Default Factory Setting
All	JP1	1-2: FET GATE = BGATE: External PFET's gate tied to BGATE pin and therefore controlled by IC. 2-3: FET GATE = SYS: External PFET's gate tied to SYS and therefore disabled. It is recommended that this jumper be changed only when the device is not enabled or in Hi-Z mode so that the PFET's gate is never left open.	1-2 (FET GATE = BGATE)
bq24165	JP2	1-2: $\overline{CE1}$ = HI: Active-low enable for reduced VBAT voltage (if CE2 = LO) or suspended charging (if CE2 = HI) 2-3: $\overline{CE1}$ = LO: Active-low enable for full current charging (if CE2 = LO) or charging at half current (if CE2 = HI)	2-3 ( $\overline{CE1}$ = LO)
bq24166 bq24167	JP2	1-2: $\overline{CE}$ = HI: Active-low charge enable high to disable charge and enter Hi-Z mode 2-3: $\overline{CE}$ = LO: Active-low charge enable low for normal operation	2-3 ( $\overline{CE}$ = LO)
All	JP3	1-2: IUSB3 = HI 2-3: IUSB3 = LO See data sheet Table 1 for description of USB input current limit and VINDPM threshold setting. Default setting is for 500-mA input current limit and 4.68-V threshold.	2-3 (IUSB3 = LO)
All	JP4	1-2: IUSB2 = HI 2-3: IUSB2 = LO See data sheet Table 1 for description of USB input current limit and VINDPM threshold setting. Default setting is for 500-mA input current limit and 4.68-V threshold.	2-3 (IUSB2 = LO)
All	JP5	1-2: IUSB1 = HI 2-3: IUSB1 = LO See data sheet Table 1 for description of USB input current limit and VINDPM threshold setting. Default setting is for 500-mA input current limit and 4.68-V threshold.	1-2 (IUSB1 = HI)
bq24165	JP6	1-2 ( $\overline{CE2}$ = HI): Active-low enable for charging at half current (if $\overline{CE1}$ = LO) or suspended charging (if CE1 = HI) 2-3 ( $\overline{CE2}$ = LO): Active-low enable for full current charging (if $\overline{CE1}$ = LO) or reduced VBAT voltage (if CE1 = HI)	2-3 ( $\overline{CE2}$ = LO)
bq24166 bq24167	JP6	1-2 (TS = EXT): Connects the TS pin to an external thermistor. The resistor divider formed by R4 and R5 has been sized to accommodate a 10-k $\Omega$ thermistor. If a different thermistor is used, R4 and R5 need to be resized. 2-3 (TS = INT): Connects a potentiometer to the TS pin so the potentiometer can emulate a thermistor. The potentiometer has been preset to approximately 3.4 k $\Omega$ so that the TS voltage is 0.5 x V(DRV).	2-3 (TS = INT)

## 1.7 Recommended Operating Conditions

		Min	Typ	Max	Unit
Supply voltage, $V_{IN}$	Operating input voltage from ac adapter	4.2		10	V
USB voltage, $V_{USB}$	Operating input voltage from USB or equivalent supply	4.2		6	V
Battery voltage, $V_{BAT}$	Voltage applied at VBAT terminal (depends on status of $\overline{CE1}$ and $\overline{CE2}$ )	4.02	4.2	4.24	V
System voltage, $V_{SYS}$	Voltage output at SYS terminal (depends on VBAT voltage and status of $V_{INDPM}$ )	3.4		4.37	V
Supply current, $I_{IN(MAX)}$	Maximum input current limit for ac adapter input (set by user-selectable resistor)	1.5		2.5	A
Supply current, $I_{USB(MAX)}$	Maximum input current limit for USB input (set by USBx input pins)	0.1	0.5	1.5	A
Max fast charge current, $I_{CHRG(MAX)}$	Battery charge current	0.550		2.5	A
Operating junction temperature range, $T_J$		-40		125	°C

## 2 Test Summary

This procedure describes one test configuration of the HPA741 evaluation board for bench evaluation.

### 2.1 Definitions

The following naming conventions are followed.

VXXX :	External voltage supply name (VIN, VUSB)
LOAD#:	External load name
V(TPyyy):	Voltage at internal test point TPyyy. For example, V(TP12) means the voltage at TP12.
V(Jxx):	Voltage at header Jxx
V(TP(XXX)):	Voltage at test point XXX. For example, V(ACDET) means the voltage at the test point which is marked as ACDET.
V(XXX, YYY):	Voltage across point XXX and YYY.
I(JXX(YYY)):	Current going out from the YYY terminal of header XX.
Jxx(BBB):	Terminal or pin BBB of header xx
JPx ON :	Internal jumper Jxx terminals are shorted.
JPx OFF:	Internal jumper Jxx terminals are open.
JPx (-YY-)	ON: Internal jumper Jxx adjacent terminals marked as YY are shorted.
Measure: → A,B	Check specified parameters A, B. If measured values are not within specified limits the unit under test has failed.
Observe → A,B	Observe if A, B occur. If they do not occur, the unit under test has failed.

Assembly drawings have location for jumpers, test points, and individual components.

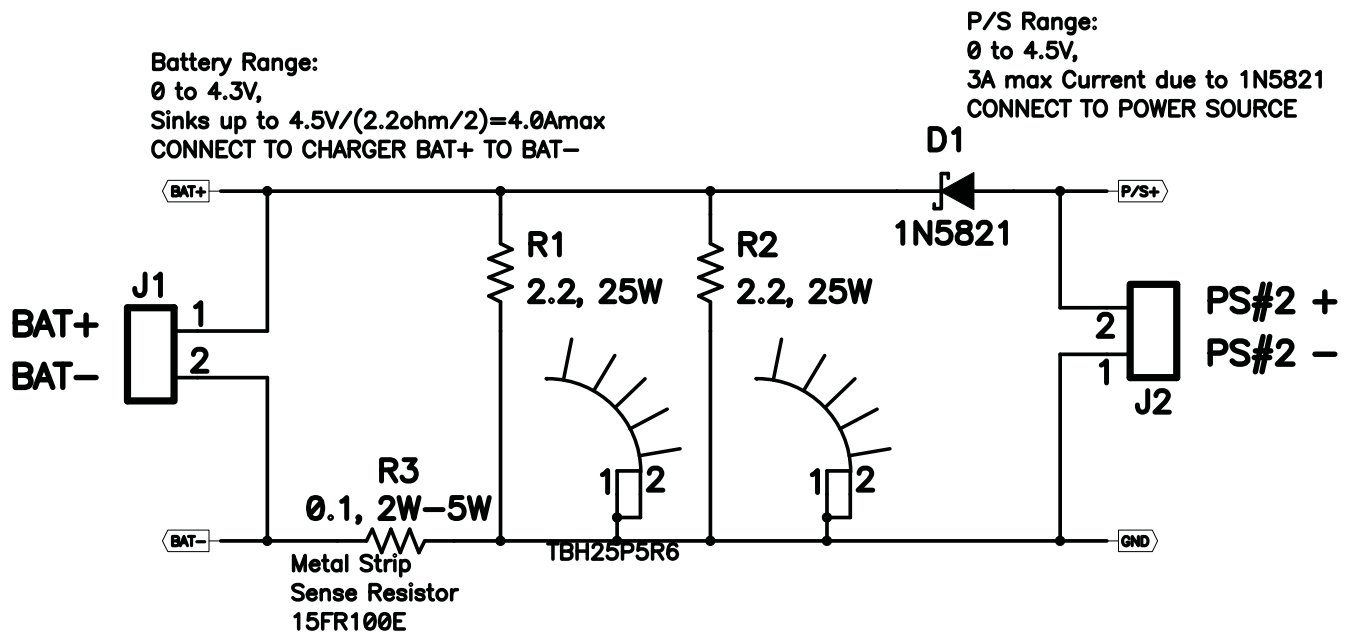
### 2.2 Recommended Test Equipment

#### 2.2.1 Power Supplies

1. Power Supply number 1 (PS1) capable of supplying 6 V at 3 A is required.
2. If not using a battery as the load, then power supply number 2 (PS2) capable of supplying up to 5 V at 5 A is required to power the circuit shown in [Figure 2](#).

#### 2.2.2 Load #1 between BAT and GND

Testing with an actual battery is the best way to verify operation in the system. If a battery is unavailable, then a circuit similar to the one shown in [Figure 2](#) can simulate a battery when connected to a second power supply.



### 2.2.3 Load #2 Between SYS and GND

Although not required, a resistive load capable of sinking up to 3 A can be used.

### 2.2.4 Meters

Four equivalent voltage meters (VMx) and two equivalent current meters (CMx) are required. The current meters must be able to measure at least 3-A current.

## 2.3 Recommended Test Equipment Setup

1. For all power connections, use short, twisted-pair wires of appropriate gauge wire for the amount of the current.
2. Set Power Supply number 1 for 6 V  $\pm$  100 mV, 3-A current limit, and then turn off supply.
3. If BAT\_Load (PR1010) as shown in [Figure 2](#) is used, connect Power Supply number 2 (PS2) set to approximately 3.6 V to the input side (PS2+/-) of BAT\_Load (PR1010), then turn off PS2.
4. Connect the output side of the battery or BAT\_Load (PR1010) in series with current meter (multimeter) number 2 (CM2) to J2 and J6 or J3 (BAT, GND). Ensure that a voltage meter is connected across J2 or TP3 and J6 or TP9 (BAT, GND).
5. Connect VM3 across J5 or TP4 and J9 (SYS, GND).
6. Connect VM4 across J13 and J15 (DRV, GND).
7. Ensure jumpers are at the default factory settings per [Section 1.6](#)
8. After the preceding steps are accomplished, the test setup for HPA741 is as shown in [Figure 3](#)



The following test procedure may be useful for evaluating the charger IC outside of a real system, if no battery is available to connect to the output and a simulated battery is needed.

1. Ensure that the [Section 2.3](#) steps are followed.
2. Move JP2 ( $\overline{\text{CE1}}$  or  $\overline{\text{CE}}$ ) = HI and JP6 = HI.
3. Connect the output of Power Supply #1 (PS #1) in series with current meter number 1 (CM1) to J2 (IN, GND).
4. Connect voltage meter number 1 (VM1) across J1 or TP1 and J3 or TP6 (IN, GND).
5. With PS2 disabled, turn on PS1.
6. Measure:
  - Measure on VM3*  $\rightarrow V(\text{J5/TP4(SYS),J9(GND)}) = 4.3 \pm 100 \text{ mV}$
  - Measure on VM4*  $\rightarrow V(\text{J13(DRV),J15(GND)}) = 5.2 \pm 200 \text{ mV}$
7. Move JP2 ( $\overline{\text{CE1}}$  or  $\overline{\text{CE}}$ ) = LO and JP6 = LO. Adjust the power supply so that VM1 still reads  $6 \text{ V} \pm 100 \text{ mV}$  if necessary.
8. Enable PS2 and adjust PS2 so that the voltage measured by VM2, across BAT and GND, measures  $3.2 \text{ V} \pm 50 \text{ mV}$
9. Measure and Observe:
  - Measure on CM2*  $\rightarrow I_{\text{CHRG}} = 2500 \text{ mA} \pm 150 \text{ mA}$
  - Measure on CM1*  $\rightarrow I_{\text{IN}} = 1800 \text{ mA} \pm 180 \text{ mA}$
  - Observe*  $\rightarrow \text{D1 and D2 are on.}$
10. Turn off PS1 and PS2.



### 2.4.2 Charge Voltage and Current Regulation of USB

1. Ensure that the [Section 2.3](#) steps are followed.
2. Move JP2 ( $\overline{CE1}$  or  $\overline{CE}$ ) = HI and JP6 = HI.
3. Connect the output of Power Supply number 1 (PS1) in series with current meter (multimeter) number 1 (CM1) to J4 and J8 or J6 (USB, GND).
4. Connect voltage meter 1 (VM1) across J4 or TP2 and J8 or TP5 (USB, GND).
5. With PS2 disabled, turn on PS1.
6. Measure:  
*Measure on VM3*  $\rightarrow V(J5/TP4(SYS), J9(GND)) = 4.3 \pm 100 \text{ mV}$   
*Measure on VM4*  $\rightarrow V(J13(DRV), J15(GND)) = 5.2 \pm 200 \text{ mV}$
7. Move JP2 ( $\overline{CE1}$  or  $\overline{CE}$ ) = LO and JP6 = LO while keeping the default settings for JP3 (USB3), JP4 (USB2) and JP5 (USB1). Adjust PS1 so that VM1 still reads  $6 \text{ V} \pm 100 \text{ mV}$  if necessary.
8. Enable PS2 and adjust PS2 so that the voltage measured by VM2, across BAT and GND, measures  $3.2 \text{ V} \pm 50 \text{ mV}$ .
9. Measure:  
*Measure on CM2*  $\rightarrow I_{\text{CHRG}} = 735 \text{ mA} \pm 75 \text{ mA}$   
*Measure on CM1*  $\rightarrow I_{\text{IN}} = 475 \text{ mA} \pm 50 \text{ mA}$   
*Observe*  $\rightarrow$  D1 and D2 are on.
10. Turn off PS1 and PS2.

### 2.4.3 Helpful hints

1. To observe the taper current as the battery voltage approaches the set regulation voltage, allow the battery to charge or, if using BAT\_Load (PR1010), slowly increase the PS2 voltage powering BAT\_Load (PR1010). Use VM2 across BAT and GND to measure the battery voltage seen by the IC.
2. To observe the  $V_{\text{INDPM}}$  function, lower the current limit on PS1.
3. To observe battery supplement mode, apply a resistive load across SYS and GND that is higher than the maximum charge current.

### 3 Printed-Circuit Board Layout Guideline

1. To obtain optimal performance, the power input capacitors, connected from the PMID input to PGND, must be placed as close as possible to the bq2416x.
2. Place 4.7- $\mu$ F input capacitor as close to PMID pin and PGND pin as possible to make high-frequency current loop area as small as possible. Place 1- $\mu$ F input capacitor GNDs as close to the respective PMID capacitor GND and PGND pins as possible to minimize the ground difference between the input and PMID\_.
3. The local bypass capacitor from SYS to GND must be connected between the SYS pin and PGND of the IC. The intent is to minimize the current path loop area from the SW pin through the LC filter and back to the PGND pin.
4. Place all decoupling capacitors close to their respective IC pins and as close as to PGND (do not place components such that routing interrupts power stage currents). All small control signals must be routed away from the high-current paths.
5. The PCB must have a ground plane (return) connected directly to the return of all components through vias (two vias per capacitor for power-stage capacitors, one via per capacitor for small-signal components). It is also recommended to put vias inside the PGND pads for the IC, if possible. A star ground design approach is typically used to keep circuit block currents isolated (high-power/low-power small-signal) which reduces noise-coupling and ground-bounce issues. A single ground plane for this design gives good results. With this small layout and a single ground plane, no ground-bounce issue occurs, and having the components segregated minimizes coupling between signals.
6. The high-current charge paths into IN, USB, BAT, SYS, and from the SW pins must be sized appropriately for the maximum charge current in order to avoid voltage drops in these traces. The PGND pins must be connected to the ground plane to return current through the internal low-side FET.
7. For high-current applications, the balls for the power paths must be connected to as much copper in the board as possible. This allows better thermal performance because the board conducts heat away from the IC.

## 4 Bill of Materials and Board Layout

### 4.1 Bill of Materials

**Table 1. Bill of Materials - HPA741A**

Count			RefDes	Value	Description	Size	Part Number	MFR
-001	-002	-003						
0	0	0	C1, C6	Open	Capacitor, Ceramic	805	Std	Std
2	2	2	C2, C7	1.0μF	Capacitor, Ceramic, 25V, X5R, 10%	603	Std	Std
2	2	2	C3, C8	4.7μF	Capacitor, Ceramic, 25V, X5R, 10%	805	Std	Std
1	1	1	C4	10μF	Capacitor, Ceramic, 10V, X5R, 20%	603	Std	Std
1	1	1	C5	47μF	Capacitor, Ceramic, 6.3V, X5R, 20%	805	Std	Std
1	1	1	C9	0.01μF	Capacitor, Ceramic, 16V, X7R, 10%	603	Std	Std
1	1	1	C10	47μF	Capacitor, Ceramic, 6.3V, X5R, 20%	1206	Std	Std
2	2	2	C11, C12	1.0μF	Capacitor, Ceramic, 6.3V, X5R, 10%	402	Std	Std
2	2	2	D1, D2	LTST-C190GKT	Diode, LED, Green, 2.1-V, 20-mA, 6-mcd	603	LTST-C190GKT	Liteon
1	1	1	D3	BAT54C	Diode, Dual Schottky, 200-mA, 30-V	SOT23	BAT54C	Fairchild
10	10	10	J1, J3, J4, J5, J8, J9, J10, J12, J13, J15	PEC02SAAN	Header, Male 2-pin, 100mil spacing,	0.100 inch x 2	PEC02SAAN	Sullins
5	5	5	J2, J6, J7, J11, J14	ED555/2DS	Terminal Block, 2-pin, 6-A, 3.5mm	0.27 x 0.25	ED555/2DS	OST
0	1	1	J16	ED555/2DS	Terminal Block, 2-pin, 6-A, 3.5mm	0.27 x 0.25	ED555/2DS	OST
6	6	6	JP1, JP2, JP3, JP4, JP5, JP6	PEC03SAAN	Header, Male 3-pin, 100mil spacing,	0.100 inch x 3	PEC03SAAN	Sullins
1	1	1	L1	1.5μH	Inductor, SMT, 3.5A, 70 mΩ	4.1 x 4.4 mm	SPM4012T-1R5M Alternate: FDSD0415-H-1R5M	TDK Alternate: Toko
1	1	1	Q1	CSD25401Q3	MOSFET, PChan, -20V, 60A, 8.7 mΩ	chipscale3.3X3.3mm	CSD25401Q3	TI
1	1	1	R1	26.7kΩ	Resistor, Chip, 1/16W, 1%	603	Std	Std
1	1	1	R2	100Ω	Resistor, Chip, 1/16W, 1%	402	Std	Std
1	1	1	R3	10kΩ	Resistor, Chip, 1/16W, 1%	603	Std	Std
0	1	1	R4	1870Ω	Resistor, Chip, 1/16W, 1%	603	Std	Std
0	1	1	R5	4120Ω	Resistor, Chip, 1/16W, 1%	603	Std	Std
1	1	1	R6	196Ω	Resistor, Chip, 1/16W, 1%	402	Std	Std
2	2	2	R7, R8	1.50kΩ	Resistor, Chip, 1/16W, 1%	603	Std	Std
0	1	1	R9	50.0kΩ	Potentiometer, 3/8 Cermet, 12-Turn	0.25x0.17 inch	3266W-1-503LF	Bourns
2	0	0	R10, R11	0	Resistor, Chip, 1/16W	603	Std	Std
14	14	14	TP1, TP2, TP3, TP4, TP7, TP8, TP9, TP10, TP11, TP12, TP13, TP14, TP15, TP16	5002	Test Point, White, Thru Hole Color Keyed	0.100 x 0.100 inch	5002	Keystone
2	2	2	TP5, TP6	5001	Test Point, Black, Thru Hole Color Keyed	0.100 x 0.100 inch	5001	Keystone

**Table 1. Bill of Materials - HPA741A (continued)**

Count			RefDes	Value	Description	Size	Part Number	MFR
-001	-002	-003						
1	0	0	U1	BQ24165YFF	IC, 2.5A, Dual-Input, Single Cell Switch-mode Li-Ion BATTERY CHARGER with	BGA	BQ24165YFF	TI
0	1	0	U1	BQ24166YFF	IC, 2.5A, Dual-Input, Single Cell Switch-mode Li-Ion BATTERY CHARGER with	BGA	BQ24166YFF	TI
0	0	1	U1	BQ24167YFF	IC, 2.5A, Dual-Input, Single Cell Switch-mode Li-Ion BATTERY CHARGER with	BGA	BQ24167YFF	TI
6	6	6	--		Shunt, 100-mil, Black	0.100	929950-00	3M

## 4.2 Board Layout

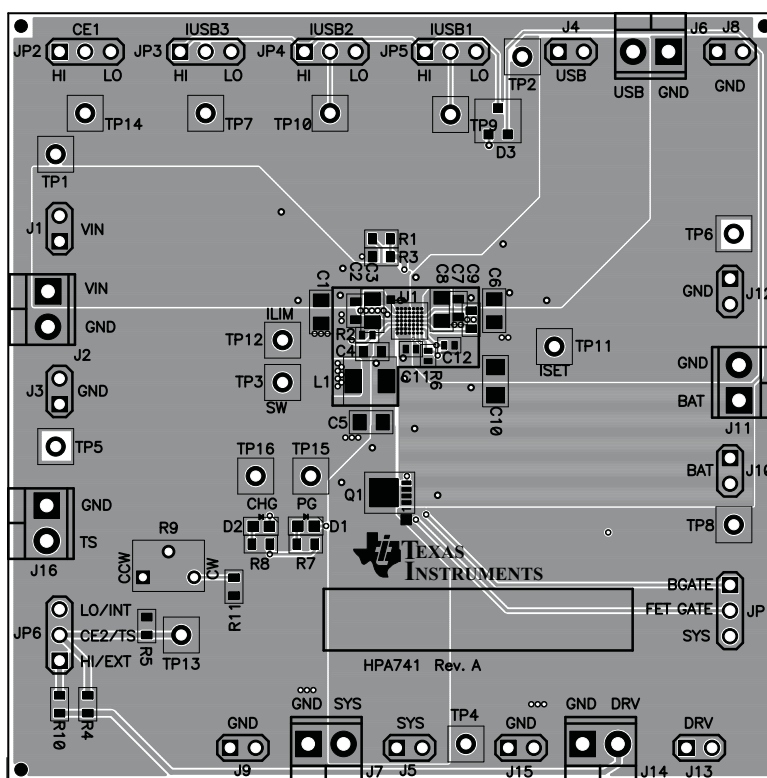


Figure 4. Top Assembly Layer

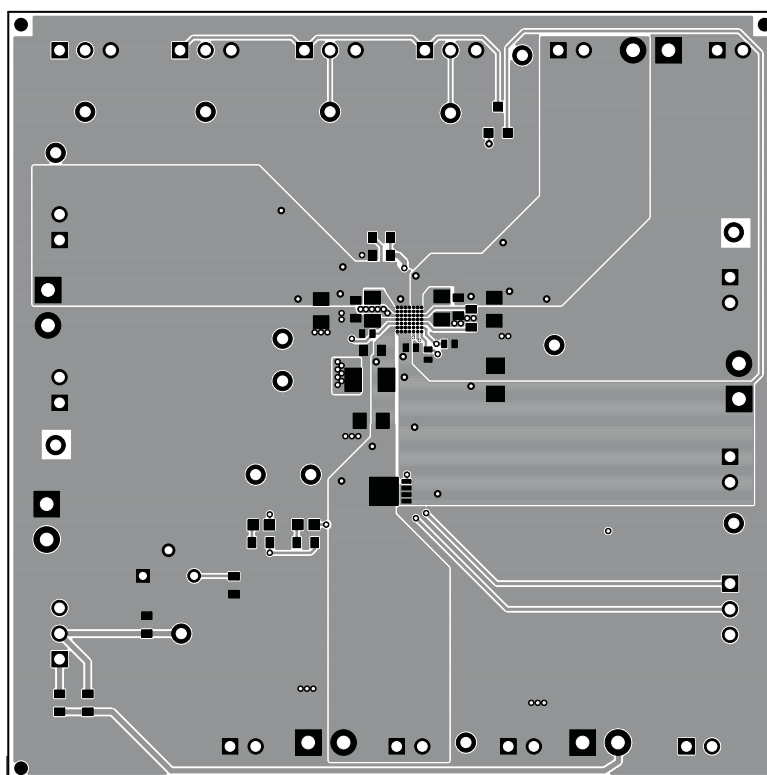
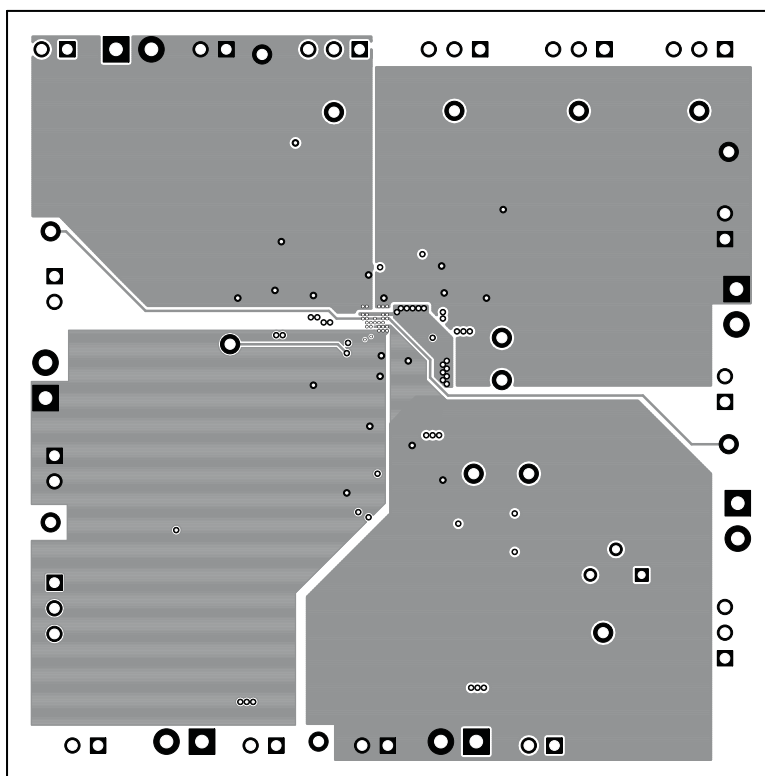
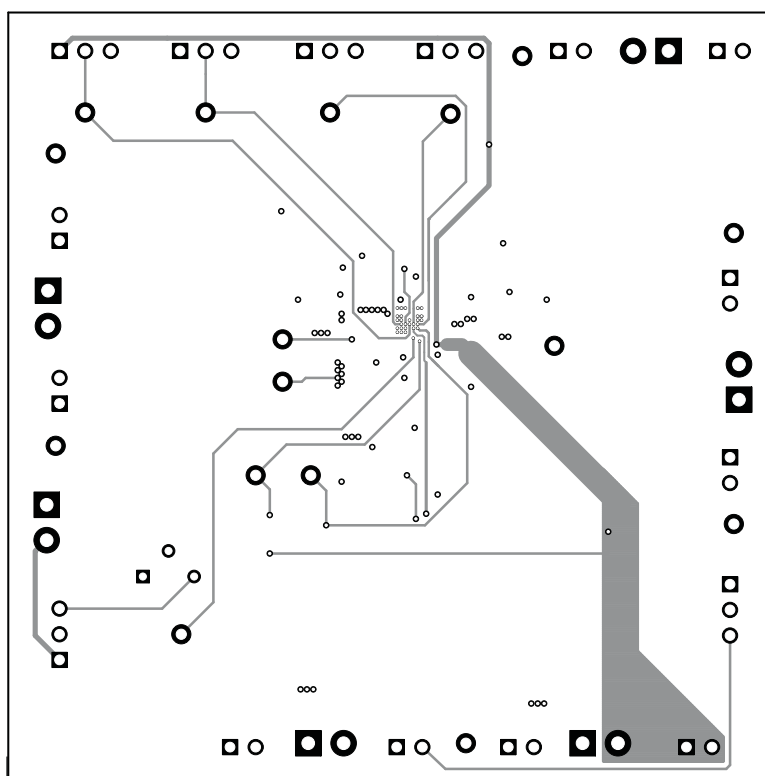


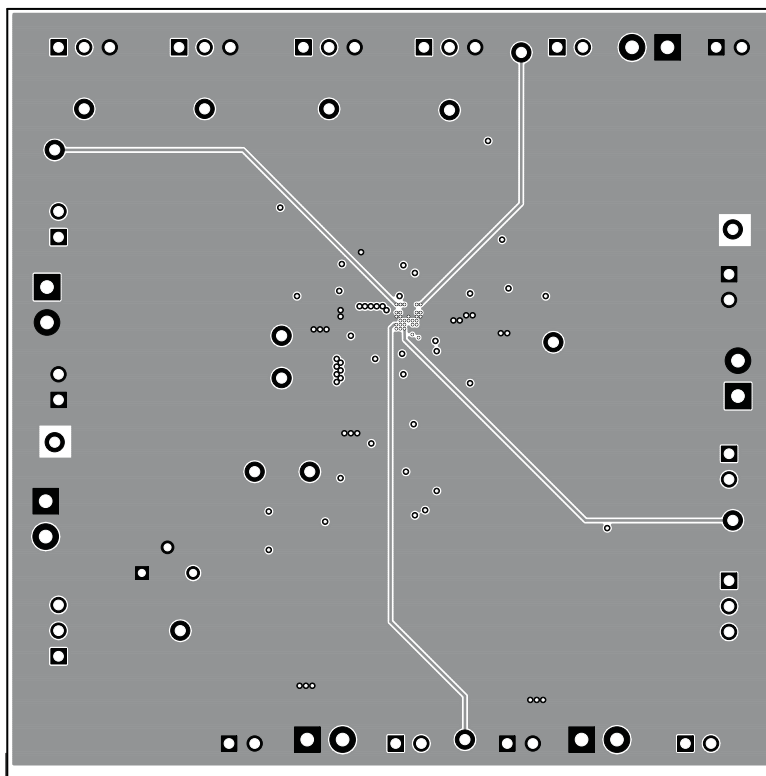
Figure 5. Top Layer



**Figure 6. Bottom Layer**



**Figure 7. First Internal Layer**



**Figure 8. Second Internal Layer**

## EVALUATION BOARD/KIT/MODULE (EVM) ADDITIONAL TERMS

Texas Instruments (TI) provides the enclosed Evaluation Board/Kit/Module (EVM) under the following conditions:

The user assumes all responsibility and liability for proper and safe handling of the goods. Further, the user indemnifies TI from all claims arising from the handling or use of the goods.

Should this evaluation board/kit not meet the specifications indicated in the User's Guide, the board/kit may be returned within 30 days from the date of delivery for a full refund. THE FOREGOING LIMITED WARRANTY IS THE EXCLUSIVE WARRANTY MADE BY SELLER TO BUYER AND IS IN LIEU OF ALL OTHER WARRANTIES, EXPRESSED, IMPLIED, OR STATUTORY, INCLUDING ANY WARRANTY OF MERCHANTABILITY OR FITNESS FOR ANY PARTICULAR PURPOSE. EXCEPT TO THE EXTENT OF THE INDEMNITY SET FORTH ABOVE, NEITHER PARTY SHALL BE LIABLE TO THE OTHER FOR ANY INDIRECT, SPECIAL, INCIDENTAL, OR CONSEQUENTIAL DAMAGES.

Please read the User's Guide and, specifically, the Warnings and Restrictions notice in the User's Guide prior to handling the product. This notice contains important safety information about temperatures and voltages. For additional information on TI's environmental and/or safety programs, please visit [www.ti.com/esh](http://www.ti.com/esh) or contact TI.

No license is granted under any patent right or other intellectual property right of TI covering or relating to any machine, process, or combination in which such TI products or services might be or are used. TI currently deals with a variety of customers for products, and therefore our arrangement with the user is not exclusive. TI assumes no liability for applications assistance, customer product design, software performance, or infringement of patents or services described herein.

## REGULATORY COMPLIANCE INFORMATION

As noted in the EVM User's Guide and/or EVM itself, this EVM and/or accompanying hardware may or may not be subject to the Federal Communications Commission (FCC) and Industry Canada (IC) rules.

For EVMs **not** subject to the above rules, this evaluation board/kit/module is intended for use for ENGINEERING DEVELOPMENT, DEMONSTRATION OR EVALUATION PURPOSES ONLY and is not considered by TI to be a finished end product fit for general consumer use. It generates, uses, and can radiate radio frequency energy and has not been tested for compliance with the limits of computing devices pursuant to part 15 of FCC or ICES-003 rules, which are designed to provide reasonable protection against radio frequency interference. Operation of the equipment may cause interference with radio communications, in which case the user at his own expense will be required to take whatever measures may be required to correct this interference.

### General Statement for EVMs including a radio

*User Power/Frequency Use Obligations:* This radio is intended for development/professional use only in legally allocated frequency and power limits. Any use of radio frequencies and/or power availability of this EVM and its development application(s) must comply with local laws governing radio spectrum allocation and power limits for this evaluation module. It is the user's sole responsibility to only operate this radio in legally acceptable frequency space and within legally mandated power limitations. Any exceptions to this are strictly prohibited and unauthorized by Texas Instruments unless user has obtained appropriate experimental/development licenses from local regulatory authorities, which is responsibility of user including its acceptable authorization.

### For EVMs annotated as FCC – FEDERAL COMMUNICATIONS COMMISSION Part 15 Compliant

#### Caution

This device complies with part 15 of the FCC Rules. Operation is subject to the following two conditions: (1) This device may not cause harmful interference, and (2) this device must accept any interference received, including interference that may cause undesired operation.

Changes or modifications not expressly approved by the party responsible for compliance could void the user's authority to operate the equipment.

### FCC Interference Statement for Class A EVM devices

This equipment has been tested and found to comply with the limits for a Class A digital device, pursuant to part 15 of the FCC Rules. These limits are designed to provide reasonable protection against harmful interference when the equipment is operated in a commercial environment. This equipment generates, uses, and can radiate radio frequency energy and, if not installed and used in accordance with the instruction manual, may cause harmful interference to radio communications. Operation of this equipment in a residential area is likely to cause harmful interference in which case the user will be required to correct the interference at his own expense.



### **FCC Interference Statement for Class B EVM devices**

This equipment has been tested and found to comply with the limits for a Class B digital device, pursuant to part 15 of the FCC Rules. These limits are designed to provide reasonable protection against harmful interference in a residential installation. This equipment generates, uses and can radiate radio frequency energy and, if not installed and used in accordance with the instructions, may cause harmful interference to radio communications. However, there is no guarantee that interference will not occur in a particular installation. If this equipment does cause harmful interference to radio or television reception, which can be determined by turning the equipment off and on, the user is encouraged to try to correct the interference by one or more of the following measures:

- Reorient or relocate the receiving antenna.
- Increase the separation between the equipment and receiver.
- Connect the equipment into an outlet on a circuit different from that to which the receiver is connected.
- Consult the dealer or an experienced radio/TV technician for help.

### **For EVMs annotated as IC – INDUSTRY CANADA Compliant**

This Class A or B digital apparatus complies with Canadian ICES-003.

Changes or modifications not expressly approved by the party responsible for compliance could void the user's authority to operate the equipment.

### **Concerning EVMs including radio transmitters**

This device complies with Industry Canada licence-exempt RSS standard(s). Operation is subject to the following two conditions: (1) this device may not cause interference, and (2) this device must accept any interference, including interference that may cause undesired operation of the device.

### **Concerning EVMs including detachable antennas**

Under Industry Canada regulations, this radio transmitter may only operate using an antenna of a type and maximum (or lesser) gain approved for the transmitter by Industry Canada. To reduce potential radio interference to other users, the antenna type and its gain should be so chosen that the equivalent isotropically radiated power (e.i.r.p.) is not more than that necessary for successful communication.

This radio transmitter has been approved by Industry Canada to operate with the antenna types listed in the user guide with the maximum permissible gain and required antenna impedance for each antenna type indicated. Antenna types not included in this list, having a gain greater than the maximum gain indicated for that type, are strictly prohibited for use with this device.

Cet appareil numérique de la classe A ou B est conforme à la norme NMB-003 du Canada.

Les changements ou les modifications pas expressément approuvés par la partie responsable de la conformité ont pu vider l'autorité de l'utilisateur pour actionner l'équipement.

### **Concernant les EVMs avec appareils radio**

Le présent appareil est conforme aux CNR d'Industrie Canada applicables aux appareils radio exempts de licence. L'exploitation est autorisée aux deux conditions suivantes : (1) l'appareil ne doit pas produire de brouillage, et (2) l'utilisateur de l'appareil doit accepter tout brouillage radioélectrique subi, même si le brouillage est susceptible d'en compromettre le fonctionnement.

### **Concernant les EVMs avec antennes détachables**

Conformément à la réglementation d'Industrie Canada, le présent émetteur radio peut fonctionner avec une antenne d'un type et d'un gain maximal (ou inférieur) approuvé pour l'émetteur par Industrie Canada. Dans le but de réduire les risques de brouillage radioélectrique à l'intention des autres utilisateurs, il faut choisir le type d'antenne et son gain de sorte que la puissance isotrope rayonnée équivalente (p.i.r.e.) ne dépasse pas l'intensité nécessaire à l'établissement d'une communication satisfaisante.

Le présent émetteur radio a été approuvé par Industrie Canada pour fonctionner avec les types d'antenne énumérés dans le manuel d'usage et ayant un gain admissible maximal et l'impédance requise pour chaque type d'antenne. Les types d'antenne non inclus dans cette liste, ou dont le gain est supérieur au gain maximal indiqué, sont strictement interdits pour l'exploitation de l'émetteur.

## **【Important Notice for Users of this Product in Japan】**

**This development kit is NOT certified as Confirming to Technical Regulations of Radio Law of Japan**

If you use this product in Japan, you are required by Radio Law of Japan to follow the instructions below with respect to this product:

1. Use this product in a shielded room or any other test facility as defined in the notification #173 issued by Ministry of Internal Affairs and Communications on March 28, 2006, based on Sub-section 1.1 of Article 6 of the Ministry's Rule for Enforcement of Radio Law of Japan,
2. Use this product only after you obtained the license of Test Radio Station as provided in Radio Law of Japan with respect to this product, or
3. Use of this product only after you obtained the Technical Regulations Conformity Certification as provided in Radio Law of Japan with respect to this product. Also, please do not transfer this product, unless you give the same notice above to the transferee. Please note that if you could not follow the instructions above, you will be subject to penalties of Radio Law of Japan.

**Texas Instruments Japan Limited**  
**(address) 24-1, Nishi-Shinjuku 6 chome, Shinjuku-ku, Tokyo, Japan**

<http://www.tij.co.jp>

### **【ご使用にあたっての注】**

本開発キットは技術基準適合証明を受けておりません。

本製品のご使用に際しては、電波法遵守のため、以下のいずれかの措置を取っていただく必要がありますのでご注意ください。

1. 電波法施行規則第6条第1項第1号に基づく平成18年3月28日総務省告示第173号で定められた電波暗室等の試験設備でご使用いただく。
2. 実験局の免許を取得後ご使用いただく。
3. 技術基準適合証明を取得後ご使用いただく。

なお、本製品は、上記の「ご使用にあたっての注意」を譲渡先、移転先に通知しない限り、譲渡、移転できないものとします。

上記を遵守頂けない場合は、電波法の罰則が適用される可能性があることをご留意ください。

日本テキサス・インスツルメンツ株式会社

東京都新宿区西新宿 6 丁目 2 4 番 1 号

西新宿三井ビル

<http://www.tij.co.jp>

## EVALUATION BOARD/KIT/MODULE (EVM) WARNINGS, RESTRICTIONS AND DISCLAIMERS

**For Feasibility Evaluation Only, in Laboratory/Development Environments.** Unless otherwise indicated, this EVM is not a finished electrical equipment and not intended for consumer use. It is intended solely for use for preliminary feasibility evaluation in laboratory/development environments by technically qualified electronics experts who are familiar with the dangers and application risks associated with handling electrical mechanical components, systems and subsystems. It should not be used as all or part of a finished end product.

Your Sole Responsibility and Risk. You acknowledge, represent and agree that:

1. You have unique knowledge concerning Federal, State and local regulatory requirements (including but not limited to Food and Drug Administration regulations, if applicable) which relate to your products and which relate to your use (and/or that of your employees, affiliates, contractors or designees) of the EVM for evaluation, testing and other purposes.
2. You have full and exclusive responsibility to assure the safety and compliance of your products with all such laws and other applicable regulatory requirements, and also to assure the safety of any activities to be conducted by you and/or your employees, affiliates, contractors or designees, using the EVM. Further, you are responsible to assure that any interfaces (electronic and/or mechanical) between the EVM and any human body are designed with suitable isolation and means to safely limit accessible leakage currents to minimize the risk of electrical shock hazard.
3. You will employ reasonable safeguards to ensure that your use of the EVM will not result in any property damage, injury or death, even if the EVM should fail to perform as described or expected.
4. You will take care of proper disposal and recycling of the EVM's electronic components and packing materials.

**Certain Instructions.** It is important to operate this EVM within TI's recommended specifications and environmental considerations per the user guidelines. Exceeding the specified EVM ratings (including but not limited to input and output voltage, current, power, and environmental ranges) may cause property damage, personal injury or death. If there are questions concerning these ratings please contact a TI field representative prior to connecting interface electronics including input power and intended loads. Any loads applied outside of the specified output range may result in unintended and/or inaccurate operation and/or possible permanent damage to the EVM and/or interface electronics. Please consult the EVM User's Guide prior to connecting any load to the EVM output. If there is uncertainty as to the load specification, please contact a TI field representative. During normal operation, some circuit components may have case temperatures greater than 60°C as long as the input and output are maintained at a normal ambient operating temperature. These components include but are not limited to linear regulators, switching transistors, pass transistors, and current sense resistors which can be identified using the EVM schematic located in the EVM User's Guide. When placing measurement probes near these devices during normal operation, please be aware that these devices may be very warm to the touch. As with all electronic evaluation tools, only qualified personnel knowledgeable in electronic measurement and diagnostics normally found in development environments should use these EVMs.

**Agreement to Defend, Indemnify and Hold Harmless.** You agree to defend, indemnify and hold TI, its licensors and their representatives harmless from and against any and all claims, damages, losses, expenses, costs and liabilities (collectively, "Claims") arising out of or in connection with any use of the EVM that is not in accordance with the terms of the agreement. This obligation shall apply whether Claims arise under law of tort or contract or any other legal theory, and even if the EVM fails to perform as described or expected.

**Safety-Critical or Life-Critical Applications.** If you intend to evaluate the components for possible use in safety critical applications (such as life support) where a failure of the TI product would reasonably be expected to cause severe personal injury or death, such as devices which are classified as FDA Class III or similar classification, then you must specifically notify TI of such intent and enter into a separate Assurance and Indemnity Agreement.

Mailing Address: Texas Instruments, Post Office Box 655303, Dallas, Texas 75265  
Copyright © 2012, Texas Instruments Incorporated

## STANDARD TERMS FOR EVALUATION MODULES

1. *Delivery:* TI delivers TI evaluation boards, kits, or modules, including any accompanying demonstration software, components, and/or documentation which may be provided together or separately (collectively, an "EVM" or "EVMs") to the User ("User") in accordance with the terms set forth herein. User's acceptance of the EVM is expressly subject to the following terms.
  - 1.1 EVMs are intended solely for product or software developers for use in a research and development setting to facilitate feasibility evaluation, experimentation, or scientific analysis of TI semiconductors products. EVMs have no direct function and are not finished products. EVMs shall not be directly or indirectly assembled as a part or subassembly in any finished product. For clarification, any software or software tools provided with the EVM ("Software") shall not be subject to the terms and conditions set forth herein but rather shall be subject to the applicable terms that accompany such Software
  - 1.2 EVMs are not intended for consumer or household use. EVMs may not be sold, sublicensed, leased, rented, loaned, assigned, or otherwise distributed for commercial purposes by Users, in whole or in part, or used in any finished product or production system.
2. *Limited Warranty and Related Remedies/Disclaimers:*
  - 2.1 These terms do not apply to Software. The warranty, if any, for Software is covered in the applicable Software License Agreement.
  - 2.2 TI warrants that the TI EVM will conform to TI's published specifications for ninety (90) days after the date TI delivers such EVM to User. Notwithstanding the foregoing, TI shall not be liable for a nonconforming EVM if (a) the nonconformity was caused by neglect, misuse or mistreatment by an entity other than TI, including improper installation or testing, or for any EVMs that have been altered or modified in any way by an entity other than TI, (b) the nonconformity resulted from User's design, specifications or instructions for such EVMs or improper system design, or (c) User has not paid on time. Testing and other quality control techniques are used to the extent TI deems necessary. TI does not test all parameters of each EVM. User's claims against TI under this Section 2 are void if User fails to notify TI of any apparent defects in the EVMs within ten (10) business days after delivery, or of any hidden defects with ten (10) business days after the defect has been detected.
  - 2.3 TI's sole liability shall be at its option to repair or replace EVMs that fail to conform to the warranty set forth above, or credit User's account for such EVM. TI's liability under this warranty shall be limited to EVMs that are returned during the warranty period to the address designated by TI and that are determined by TI not to conform to such warranty. If TI elects to repair or replace such EVM, TI shall have a reasonable time to repair such EVM or provide replacements. Repaired EVMs shall be warranted for the remainder of the original warranty period. Replaced EVMs shall be warranted for a new full ninety (90) day warranty period.

### **WARNING**

**Evaluation Kits are intended solely for use by technically qualified, professional electronics experts who are familiar with the dangers and application risks associated with handling electrical mechanical components, systems, and subsystems.**

**User shall operate the Evaluation Kit within TI's recommended guidelines and any applicable legal or environmental requirements as well as reasonable and customary safeguards. Failure to set up and/or operate the Evaluation Kit within TI's recommended guidelines may result in personal injury or death or property damage. Proper set up entails following TI's instructions for electrical ratings of interface circuits such as input, output and electrical loads.**

**NOTE:**

EXPOSURE TO ELECTROSTATIC DISCHARGE (ESD) MAY CAUSE DEGRADATION OR FAILURE OF THE EVALUATION KIT; TI RECOMMENDS STORAGE OF THE EVALUATION KIT IN A PROTECTIVE ESD BAG.

### 3 Regulatory Notices:

#### 3.1 United States

##### 3.1.1 Notice applicable to EVMs not FCC-Approved:

**FCC NOTICE:** This kit is designed to allow product developers to evaluate electronic components, circuitry, or software associated with the kit to determine whether to incorporate such items in a finished product and software developers to write software applications for use with the end product. This kit is not a finished product and when assembled may not be resold or otherwise marketed unless all required FCC equipment authorizations are first obtained. Operation is subject to the condition that this product not cause harmful interference to licensed radio stations and that this product accept harmful interference. Unless the assembled kit is designed to operate under part 15, part 18 or part 95 of this chapter, the operator of the kit must operate under the authority of an FCC license holder or must secure an experimental authorization under part 5 of this chapter.

##### 3.1.2 For EVMs annotated as FCC – FEDERAL COMMUNICATIONS COMMISSION Part 15 Compliant:

#### **CAUTION**

This device complies with part 15 of the FCC Rules. Operation is subject to the following two conditions: (1) This device may not cause harmful interference, and (2) this device must accept any interference received, including interference that may cause undesired operation.

Changes or modifications not expressly approved by the party responsible for compliance could void the user's authority to operate the equipment.

#### **FCC Interference Statement for Class A EVM devices**

*NOTE: This equipment has been tested and found to comply with the limits for a Class A digital device, pursuant to part 15 of the FCC Rules. These limits are designed to provide reasonable protection against harmful interference when the equipment is operated in a commercial environment. This equipment generates, uses, and can radiate radio frequency energy and, if not installed and used in accordance with the instruction manual, may cause harmful interference to radio communications. Operation of this equipment in a residential area is likely to cause harmful interference in which case the user will be required to correct the interference at his own expense.*

#### **FCC Interference Statement for Class B EVM devices**

*NOTE: This equipment has been tested and found to comply with the limits for a Class B digital device, pursuant to part 15 of the FCC Rules. These limits are designed to provide reasonable protection against harmful interference in a residential installation. This equipment generates, uses and can radiate radio frequency energy and, if not installed and used in accordance with the instructions, may cause harmful interference to radio communications. However, there is no guarantee that interference will not occur in a particular installation. If this equipment does cause harmful interference to radio or television reception, which can be determined by turning the equipment off and on, the user is encouraged to try to correct the interference by one or more of the following measures:*

- Reorient or relocate the receiving antenna.
- Increase the separation between the equipment and receiver.
- Connect the equipment into an outlet on a circuit different from that to which the receiver is connected.
- Consult the dealer or an experienced radio/TV technician for help.

#### 3.2 Canada

##### 3.2.1 For EVMs issued with an Industry Canada Certificate of Conformance to RSS-210 or RSS-247

#### **Concerning EVMs Including Radio Transmitters:**

This device complies with Industry Canada license-exempt RSSs. Operation is subject to the following two conditions:

(1) this device may not cause interference, and (2) this device must accept any interference, including interference that may cause undesired operation of the device.

#### **Concernant les EVMs avec appareils radio:**

Le présent appareil est conforme aux CNR d'Industrie Canada applicables aux appareils radio exempts de licence. L'exploitation est autorisée aux deux conditions suivantes: (1) l'appareil ne doit pas produire de brouillage, et (2) l'utilisateur de l'appareil doit accepter tout brouillage radioélectrique subi, même si le brouillage est susceptible d'en compromettre le fonctionnement.

#### **Concerning EVMs Including Detachable Antennas:**

Under Industry Canada regulations, this radio transmitter may only operate using an antenna of a type and maximum (or lesser) gain approved for the transmitter by Industry Canada. To reduce potential radio interference to other users, the antenna type and its gain should be so chosen that the equivalent isotropically radiated power (e.i.r.p.) is not more than that necessary for successful communication. This radio transmitter has been approved by Industry Canada to operate with the antenna types listed in the user guide with the maximum permissible gain and required antenna impedance for each antenna type indicated. Antenna types not included in this list, having a gain greater than the maximum gain indicated for that type, are strictly prohibited for use with this device.

### Concernant les EVMs avec antennes détachables

Conformément à la réglementation d'Industrie Canada, le présent émetteur radio peut fonctionner avec une antenne d'un type et d'un gain maximal (ou inférieur) approuvé pour l'émetteur par Industrie Canada. Dans le but de réduire les risques de brouillage radioélectrique à l'intention des autres utilisateurs, il faut choisir le type d'antenne et son gain de sorte que la puissance isotrope rayonnée équivalente (p.i.r.e.) ne dépasse pas l'intensité nécessaire à l'établissement d'une communication satisfaisante. Le présent émetteur radio a été approuvé par Industrie Canada pour fonctionner avec les types d'antenne énumérés dans le manuel d'usage et ayant un gain admissible maximal et l'impédance requise pour chaque type d'antenne. Les types d'antenne non inclus dans cette liste, ou dont le gain est supérieur au gain maximal indiqué, sont strictement interdits pour l'exploitation de l'émetteur.

#### 3.3 Japan

3.3.1 *Notice for EVMs delivered in Japan:* Please see [http://www.tij.co.jp/sds/ti\\_ja/general/eStore/notice\\_01.page](http://www.tij.co.jp/sds/ti_ja/general/eStore/notice_01.page) 日本国内に輸入される評価用キット、ボードについては、次のところをご覧ください。

<https://www.ti.com/ja-jp/legal/notice-for-evaluation-kits-delivered-in-japan.html>

3.3.2 *Notice for Users of EVMs Considered "Radio Frequency Products" in Japan:* EVMs entering Japan may not be certified by TI as conforming to Technical Regulations of Radio Law of Japan.

If User uses EVMs in Japan, not certified to Technical Regulations of Radio Law of Japan, User is required to follow the instructions set forth by Radio Law of Japan, which includes, but is not limited to, the instructions below with respect to EVMs (which for the avoidance of doubt are stated strictly for convenience and should be verified by User):

1. Use EVMs in a shielded room or any other test facility as defined in the notification #173 issued by Ministry of Internal Affairs and Communications on March 28, 2006, based on Sub-section 1.1 of Article 6 of the Ministry's Rule for Enforcement of Radio Law of Japan,
2. Use EVMs only after User obtains the license of Test Radio Station as provided in Radio Law of Japan with respect to EVMs, or
3. Use of EVMs only after User obtains the Technical Regulations Conformity Certification as provided in Radio Law of Japan with respect to EVMs. Also, do not transfer EVMs, unless User gives the same notice above to the transferee. Please note that if User does not follow the instructions above, User will be subject to penalties of Radio Law of Japan.

【無線電波を送信する製品の開発キットをお使いになる際の注意事項】 開発キットの中には技術基準適合証明を受けていないものがあります。技術適合証明を受けていないもののご使用に際しては、電波法遵守のため、以下のいずれかの措置を取っていただく必要がありますのでご注意ください。

1. 電波法施行規則第6条第1項第1号に基づく平成18年3月28日総務省告示第173号で定められた電波暗室等の試験設備でご使用いただく。
2. 実験局の免許を取得後ご使用いただく。
3. 技術基準適合証明を取得後ご使用いただく。

なお、本製品は、上記の「ご使用にあたっての注意」を譲渡先、移転先に通知しない限り、譲渡、移転できないものとします。

上記を遵守頂けない場合は、電波法の罰則が適用される可能性があることをご留意ください。 日本テキサス・インスツルメンツ株式会社  
東京都新宿区西新宿 6 丁目 2 4 番 1 号  
西新宿三井ビル

3.3.3 *Notice for EVMs for Power Line Communication:* Please see [http://www.tij.co.jp/sds/ti\\_ja/general/eStore/notice\\_02.page](http://www.tij.co.jp/sds/ti_ja/general/eStore/notice_02.page)

電力線搬送波通信についての開発キットをお使いになる際の注意事項については、次のところをご覧ください。<https://www.ti.com/ja-jp/legal/notice-for-evaluation-kits-for-power-line-communication.html>

#### 3.4 European Union

3.4.1 *For EVMs subject to EU Directive 2014/30/EU (Electromagnetic Compatibility Directive):*

This is a class A product intended for use in environments other than domestic environments that are connected to a low-voltage power-supply network that supplies buildings used for domestic purposes. In a domestic environment this product may cause radio interference in which case the user may be required to take adequate measures.

#### 4 *EVM Use Restrictions and Warnings:*

4.1 EVMS ARE NOT FOR USE IN FUNCTIONAL SAFETY AND/OR SAFETY CRITICAL EVALUATIONS, INCLUDING BUT NOT LIMITED TO EVALUATIONS OF LIFE SUPPORT APPLICATIONS.

4.2 User must read and apply the user guide and other available documentation provided by TI regarding the EVM prior to handling or using the EVM, including without limitation any warning or restriction notices. The notices contain important safety information related to, for example, temperatures and voltages.

##### 4.3 *Safety-Related Warnings and Restrictions:*

4.3.1 User shall operate the EVM within TI's recommended specifications and environmental considerations stated in the user guide, other available documentation provided by TI, and any other applicable requirements and employ reasonable and customary safeguards. Exceeding the specified performance ratings and specifications (including but not limited to input and output voltage, current, power, and environmental ranges) for the EVM may cause personal injury or death, or property damage. If there are questions concerning performance ratings and specifications, User should contact a TI field representative prior to connecting interface electronics including input power and intended loads. Any loads applied outside of the specified output range may also result in unintended and/or inaccurate operation and/or possible permanent damage to the EVM and/or interface electronics. Please consult the EVM user guide prior to connecting any load to the EVM output. If there is uncertainty as to the load specification, please contact a TI field representative. During normal operation, even with the inputs and outputs kept within the specified allowable ranges, some circuit components may have elevated case temperatures. These components include but are not limited to linear regulators, switching transistors, pass transistors, current sense resistors, and heat sinks, which can be identified using the information in the associated documentation. When working with the EVM, please be aware that the EVM may become very warm.

4.3.2 EVMs are intended solely for use by technically qualified, professional electronics experts who are familiar with the dangers and application risks associated with handling electrical mechanical components, systems, and subsystems. User assumes all responsibility and liability for proper and safe handling and use of the EVM by User or its employees, affiliates, contractors or designees. User assumes all responsibility and liability to ensure that any interfaces (electronic and/or mechanical) between the EVM and any human body are designed with suitable isolation and means to safely limit accessible leakage currents to minimize the risk of electrical shock hazard. User assumes all responsibility and liability for any improper or unsafe handling or use of the EVM by User or its employees, affiliates, contractors or designees.

4.4 User assumes all responsibility and liability to determine whether the EVM is subject to any applicable international, federal, state, or local laws and regulations related to User's handling and use of the EVM and, if applicable, User assumes all responsibility and liability for compliance in all respects with such laws and regulations. User assumes all responsibility and liability for proper disposal and recycling of the EVM consistent with all applicable international, federal, state, and local requirements.

5. *Accuracy of Information:* To the extent TI provides information on the availability and function of EVMs, TI attempts to be as accurate as possible. However, TI does not warrant the accuracy of EVM descriptions, EVM availability or other information on its websites as accurate, complete, reliable, current, or error-free.

#### 6. *Disclaimers:*

6.1 EXCEPT AS SET FORTH ABOVE, EVMS AND ANY MATERIALS PROVIDED WITH THE EVM (INCLUDING, BUT NOT LIMITED TO, REFERENCE DESIGNS AND THE DESIGN OF THE EVM ITSELF) ARE PROVIDED "AS IS" AND "WITH ALL FAULTS." TI DISCLAIMS ALL OTHER WARRANTIES, EXPRESS OR IMPLIED, REGARDING SUCH ITEMS, INCLUDING BUT NOT LIMITED TO ANY EPIDEMIC FAILURE WARRANTY OR IMPLIED WARRANTIES OF MERCHANTABILITY OR FITNESS FOR A PARTICULAR PURPOSE OR NON-INFRINGEMENT OF ANY THIRD PARTY PATENTS, COPYRIGHTS, TRADE SECRETS OR OTHER INTELLECTUAL PROPERTY RIGHTS.

6.2 EXCEPT FOR THE LIMITED RIGHT TO USE THE EVM SET FORTH HEREIN, NOTHING IN THESE TERMS SHALL BE CONSTRUED AS GRANTING OR CONFERRING ANY RIGHTS BY LICENSE, PATENT, OR ANY OTHER INDUSTRIAL OR INTELLECTUAL PROPERTY RIGHT OF TI, ITS SUPPLIERS/LICENSORS OR ANY OTHER THIRD PARTY, TO USE THE EVM IN ANY FINISHED END-USER OR READY-TO-USE FINAL PRODUCT, OR FOR ANY INVENTION, DISCOVERY OR IMPROVEMENT, REGARDLESS OF WHEN MADE, CONCEIVED OR ACQUIRED.

7. *USER'S INDEMNITY OBLIGATIONS AND REPRESENTATIONS.* USER WILL DEFEND, INDEMNIFY AND HOLD TI, ITS LICENSORS AND THEIR REPRESENTATIVES HARMLESS FROM AND AGAINST ANY AND ALL CLAIMS, DAMAGES, LOSSES, EXPENSES, COSTS AND LIABILITIES (COLLECTIVELY, "CLAIMS") ARISING OUT OF OR IN CONNECTION WITH ANY HANDLING OR USE OF THE EVM THAT IS NOT IN ACCORDANCE WITH THESE TERMS. THIS OBLIGATION SHALL APPLY WHETHER CLAIMS ARISE UNDER STATUTE, REGULATION, OR THE LAW OF TORT, CONTRACT OR ANY OTHER LEGAL THEORY, AND EVEN IF THE EVM FAILS TO PERFORM AS DESCRIBED OR EXPECTED.

8. *Limitations on Damages and Liability:*

8.1 *General Limitations.* IN NO EVENT SHALL TI BE LIABLE FOR ANY SPECIAL, COLLATERAL, INDIRECT, PUNITIVE, INCIDENTAL, CONSEQUENTIAL, OR EXEMPLARY DAMAGES IN CONNECTION WITH OR ARISING OUT OF THESE TERMS OR THE USE OF THE EVMS, REGARDLESS OF WHETHER TI HAS BEEN ADVISED OF THE POSSIBILITY OF SUCH DAMAGES. EXCLUDED DAMAGES INCLUDE, BUT ARE NOT LIMITED TO, COST OF REMOVAL OR REINSTALLATION, ANCILLARY COSTS TO THE PROCUREMENT OF SUBSTITUTE GOODS OR SERVICES, RETESTING, OUTSIDE COMPUTER TIME, LABOR COSTS, LOSS OF GOODWILL, LOSS OF PROFITS, LOSS OF SAVINGS, LOSS OF USE, LOSS OF DATA, OR BUSINESS INTERRUPTION. NO CLAIM, SUIT OR ACTION SHALL BE BROUGHT AGAINST TI MORE THAN TWELVE (12) MONTHS AFTER THE EVENT THAT GAVE RISE TO THE CAUSE OF ACTION HAS OCCURRED.

8.2 *Specific Limitations.* IN NO EVENT SHALL TI'S AGGREGATE LIABILITY FROM ANY USE OF AN EVM PROVIDED HEREUNDER, INCLUDING FROM ANY WARRANTY, INDEMNITY OR OTHER OBLIGATION ARISING OUT OF OR IN CONNECTION WITH THESE TERMS, EXCEED THE TOTAL AMOUNT PAID TO TI BY USER FOR THE PARTICULAR EVM(S) AT ISSUE DURING THE PRIOR TWELVE (12) MONTHS WITH RESPECT TO WHICH LOSSES OR DAMAGES ARE CLAIMED. THE EXISTENCE OF MORE THAN ONE CLAIM SHALL NOT ENLARGE OR EXTEND THIS LIMIT.

9. *Return Policy.* Except as otherwise provided, TI does not offer any refunds, returns, or exchanges. Furthermore, no return of EVM(s) will be accepted if the package has been opened and no return of the EVM(s) will be accepted if they are damaged or otherwise not in a resalable condition. If User feels it has been incorrectly charged for the EVM(s) it ordered or that delivery violates the applicable order, User should contact TI. All refunds will be made in full within thirty (30) working days from the return of the components(s), excluding any postage or packaging costs.
10. *Governing Law:* These terms and conditions shall be governed by and interpreted in accordance with the laws of the State of Texas, without reference to conflict-of-laws principles. User agrees that non-exclusive jurisdiction for any dispute arising out of or relating to these terms and conditions lies within courts located in the State of Texas and consents to venue in Dallas County, Texas. Notwithstanding the foregoing, any judgment may be enforced in any United States or foreign court, and TI may seek injunctive relief in any United States or foreign court.

Mailing Address: Texas Instruments, Post Office Box 655303, Dallas, Texas 75265  
Copyright © 2023, Texas Instruments Incorporated



## IMPORTANT NOTICE AND DISCLAIMER

TI PROVIDES TECHNICAL AND RELIABILITY DATA (INCLUDING DATASHEETS), DESIGN RESOURCES (INCLUDING REFERENCE DESIGNS), APPLICATION OR OTHER DESIGN ADVICE, WEB TOOLS, SAFETY INFORMATION, AND OTHER RESOURCES "AS IS" AND WITH ALL FAULTS, AND DISCLAIMS ALL WARRANTIES, EXPRESS AND IMPLIED, INCLUDING WITHOUT LIMITATION ANY IMPLIED WARRANTIES OF MERCHANTABILITY, FITNESS FOR A PARTICULAR PURPOSE OR NON-INFRINGEMENT OF THIRD PARTY INTELLECTUAL PROPERTY RIGHTS.

These resources are intended for skilled developers designing with TI products. You are solely responsible for (1) selecting the appropriate TI products for your application, (2) designing, validating and testing your application, and (3) ensuring your application meets applicable standards, and any other safety, security, regulatory or other requirements.

These resources are subject to change without notice. TI grants you permission to use these resources only for development of an application that uses the TI products described in the resource. Other reproduction and display of these resources is prohibited. No license is granted to any other TI intellectual property right or to any third party intellectual property right. TI disclaims responsibility for, and you fully indemnify TI and its representatives against any claims, damages, costs, losses, and liabilities arising out of your use of these resources.

TI's products are provided subject to [TI's Terms of Sale](#), [TI's General Quality Guidelines](#), or other applicable terms available either on [ti.com](#) or provided in conjunction with such TI products. TI's provision of these resources does not expand or otherwise alter TI's applicable warranties or warranty disclaimers for TI products. Unless TI explicitly designates a product as custom or customer-specified, TI products are standard, catalog, general purpose devices.

TI objects to and rejects any additional or different terms you may propose.

Copyright © 2026, Texas Instruments Incorporated

Last updated 10/2025