

Revision History	
Revision	Notes

MCU
CSM-SELF_MCU.SchDoc



PCB
LOGO
[FCC disclaimer](#)

PCB
LOGO
[Pb-Free Symbol](#)

LED Drive
CSM-SELF_LEDDrive.SchDoc



PCB
LOGO
[Texas Instruments](#)

PCB
LOGO
[Texas Instruments](#)



Capacitive Touch
CSM-SELF_CapacitiveTouch.SchDoc



Texas Instruments and/or its licensors do not warrant the accuracy or completeness of this specification or any information contained therein. Texas Instruments and/or its licensors do not warrant that this design will meet the specifications, will be suitable for your application or fit for any particular purpose, or will operate in an implementation. Texas Instruments and/or its licensors do not warrant that the design is production worthy. You should completely validate and test your design implementation to confirm the system functionality for your application.

Orderable: No	Designed for: Public Release		Mod. Date: 5/26/2016
TID #: TIDM-CAPTOUCHEMCREF	Project Title: Noise Tolerant Capacitive Touch HMIs		
Number: CSM-SELF	Rev: C	Sheet Title: CSM-SELF Top Level Schematic	
SVN Rev: Version control disabled	Assembly Variant: [No Variations]		Sheet: 1 of 4
Drawn By:	File: CSM-SELF_TopLevel.SchDoc		Size: B
Engineer: W. Schnoor	Contact: http://www.ti.com/support		

A

B

C

D

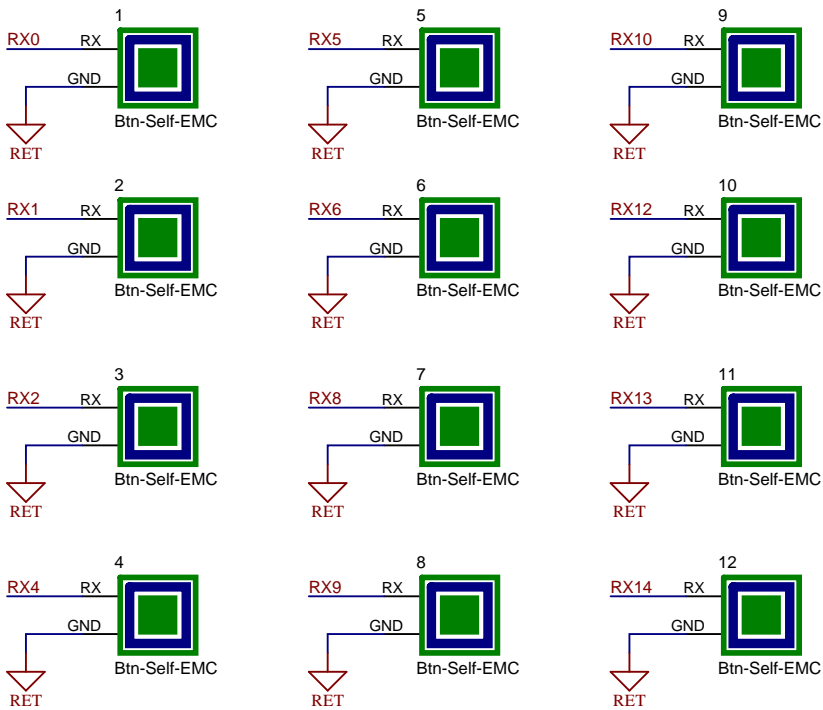
A

B

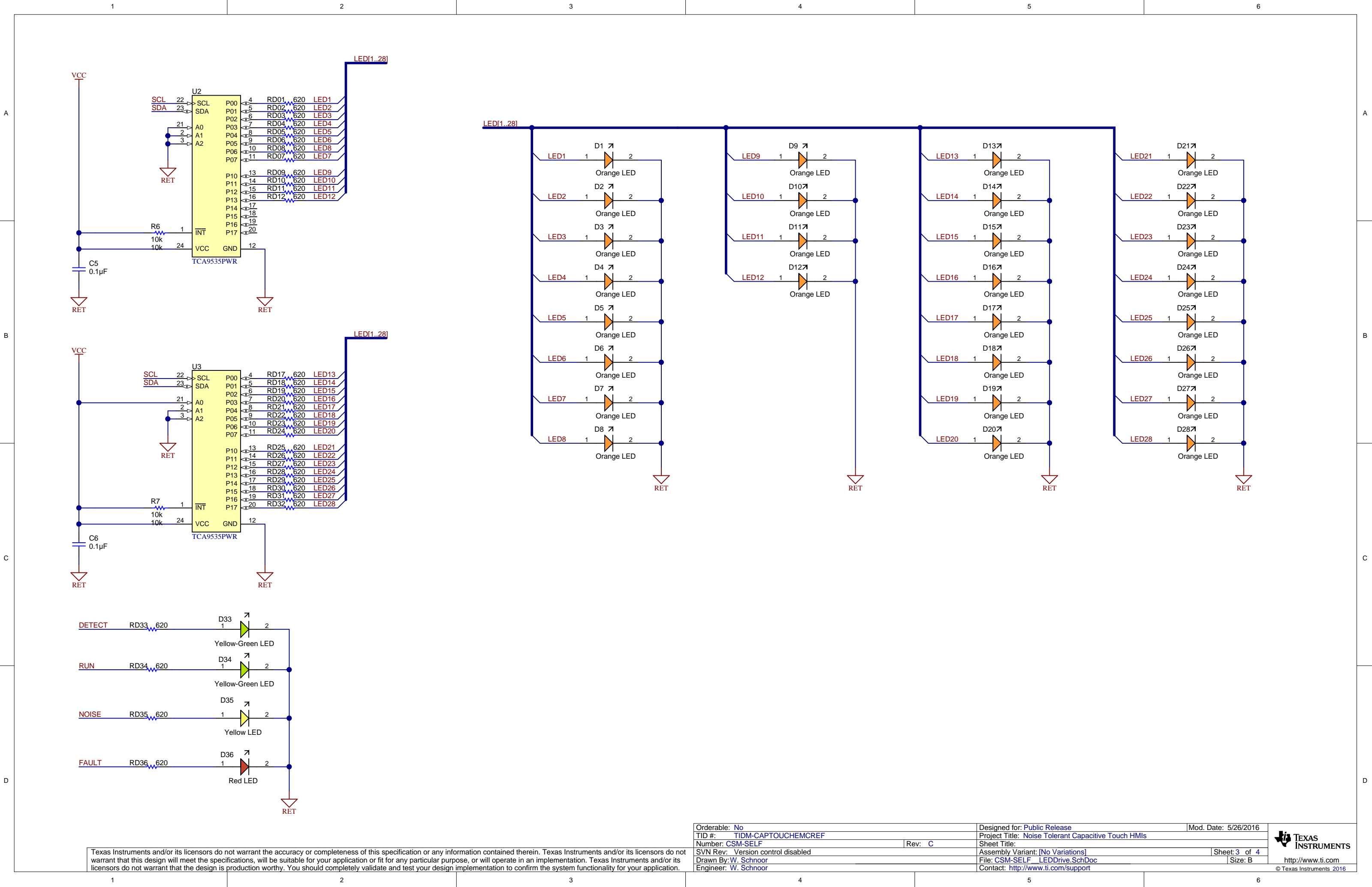
C

D

Electrode Nets					
CAP0.0	RE01	470		RX0	
CAP0.1	RE02	470		RX1	
CAP0.2	RE03	470		RX2	
CAP0.3	RE04	470		RX3	
CAP1.0	RE05	470		RX4	
CAP1.1	RE06	470		RX5	
CAP1.2	RE07	470		RX6	
CAP1.3	RE08	470		RX7	
CAP2.0	RE09	470		RX8	
CAP2.1	RE10	470		RX9	
CAP2.2	RE11	470		RX10	
CAP2.3	RE12	470		RX11	
CAP3.0	RE13	470		RX12	
CAP3.1	RE14	470		RX13	
CAP3.2	RE15	470		RX14	
CAP3.3	RE16	470		RX15	

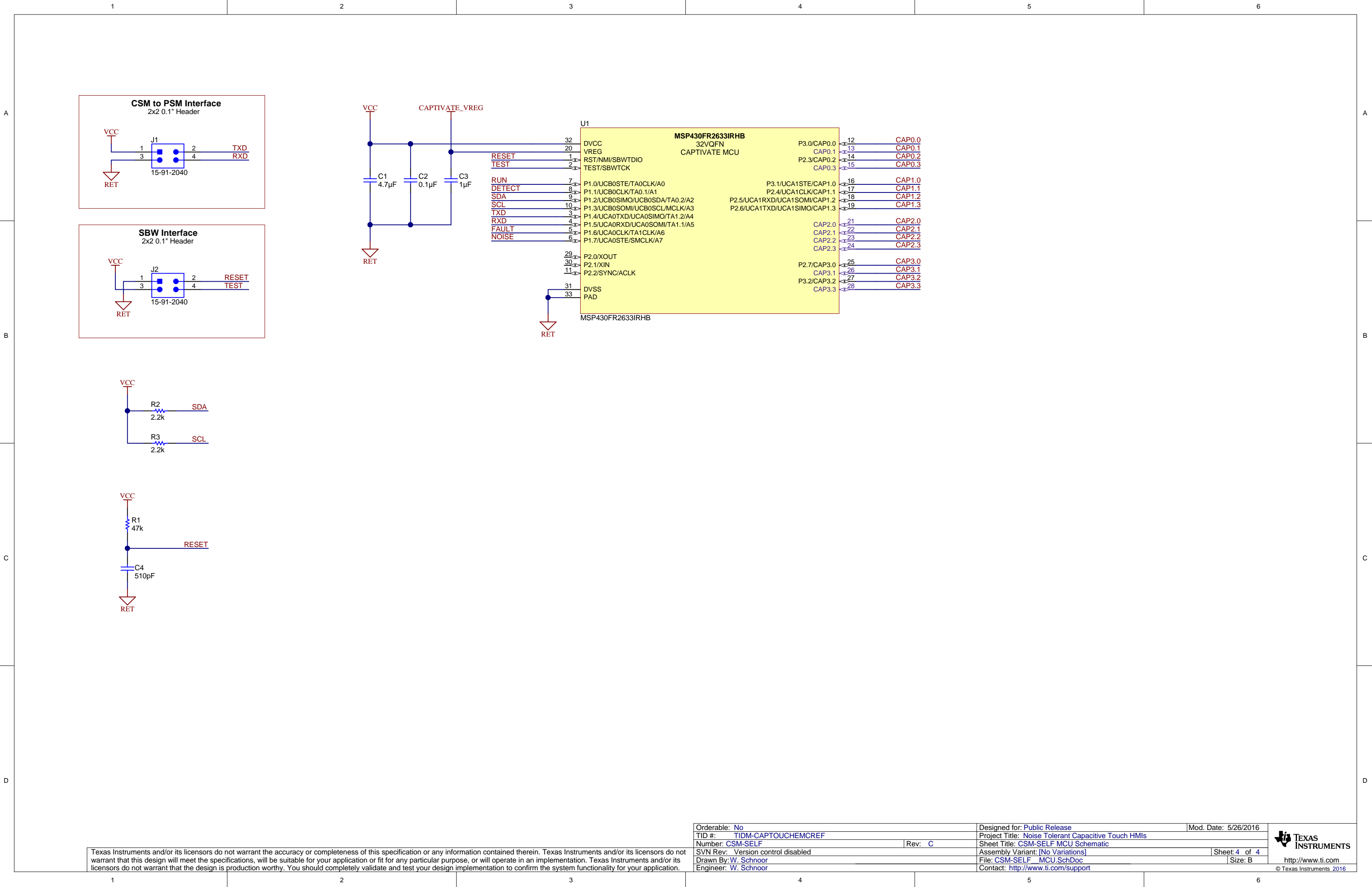


NOTE: RX3, RX7, RX11, and RX15 are connected directly to the slider sensor on the PCB.



Texas Instruments and/or its licensors do not warrant the accuracy or completeness of this specification or any information contained therein. Texas Instruments and/or its licensors do not warrant that this design will meet the specifications, will be suitable for your application or fit for any particular purpose, or will operate in an implementation. Texas Instruments and/or its licensors do not warrant that the design is production worthy. You should completely validate and test your design implementation to confirm the system functionality for your application.

Orderable: No	Designed for: Public Release	Mod. Date: 5/26/2016
TID #: TIDM-CAPTOUCHEMCREF	Project Title: Noise Tolerant Capacitive Touch HMIs	
Number: CSM-SELF	Rev: C	Sheet Title:
SVN Rev: Version control disabled	Assembly Variant: [No Variations]	Sheet: 3 of 4
Drawn By: W. Schnoor	File: CSM-SELF_LEDDrive.SchDoc	Size: B
Engineer: W. Schnoor	Contact: http://www.ti.com/support	



Texas Instruments and/or its licensors do not warrant the accuracy or completeness of this specification or any information contained therein. Texas Instruments and/or its licensors do not warrant that this design will meet the specifications, will be suitable for your application or fit for any particular purpose, or will operate in an implementation. Texas Instruments and/or its licensors do not warrant that the design is production worthy. You should completely validate and test your design implementation to confirm the system functionality for your application.

Orderable: No	Designed for: Public Release	Mod. Date: 5/26/2016
TID #: TIDM-CAPTOUCHEMCREF	Project Title: Noise Tolerant Capacitive Touch HMIs	
Number: CSM-SELF	Rev: C	Sheet Title: CSM-SELF MCU Schematic
SVN Rev: Version control disabled	Assembly Variant: [No Variations]	Sheet: 4 of 4
Drawn By: W. Schnoor	File: CSM-SELF MCU.SchDoc	Size: B
Engineer: W. Schnoor	Contact: http://www.ti.com/support	