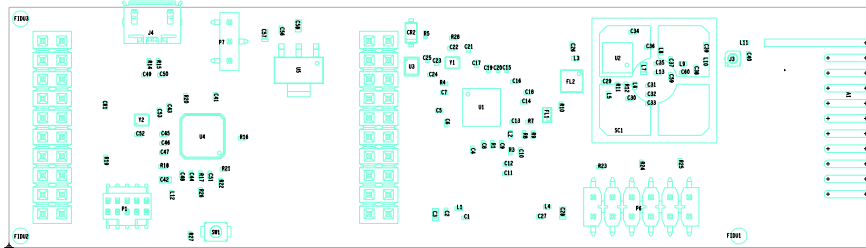


Note: Connectors P2 and P3 should be mounted from the Bottom side. The pins of the connectors should appear on the TOP side



| | | | |
|---------------------------------|-----------------|------------------------------------|-------------------------|
| CUSTOMER: Texas Instruments | | | |
| BOARD NAME: BOOSTXL-CC120-90 | | LAYER DESCRIPTION: Assembly-Top | |
| PROJECT NUMBER: XXXXXX | BOARD REV: A | RELEASE DATE: 2015-10-19 | SHEET NUMBER: 1 of 2 |