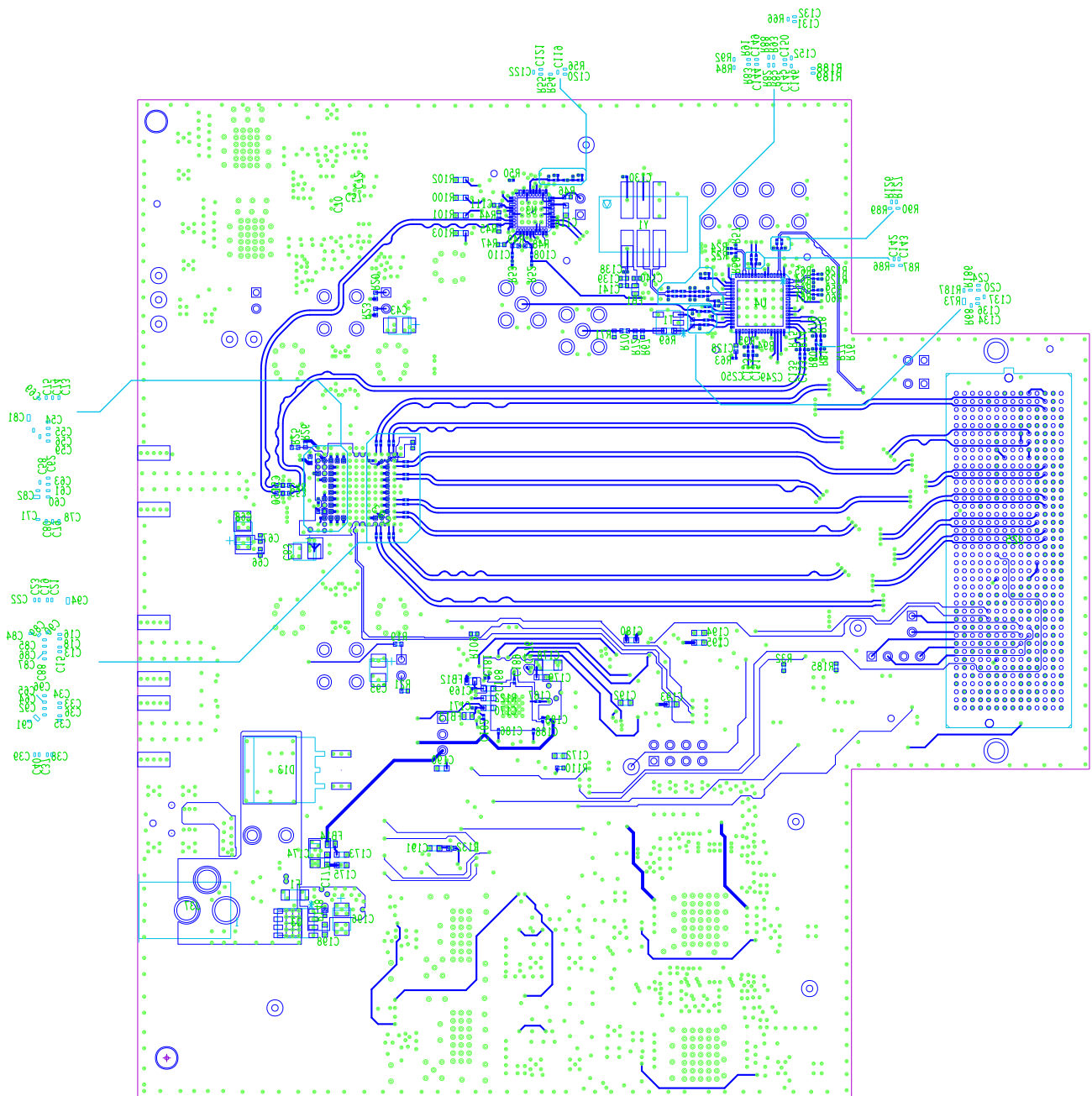


TEXAS INSTRUMENTS, INC.
 ADC12DJ3200EVMVAL REV A
 DC004

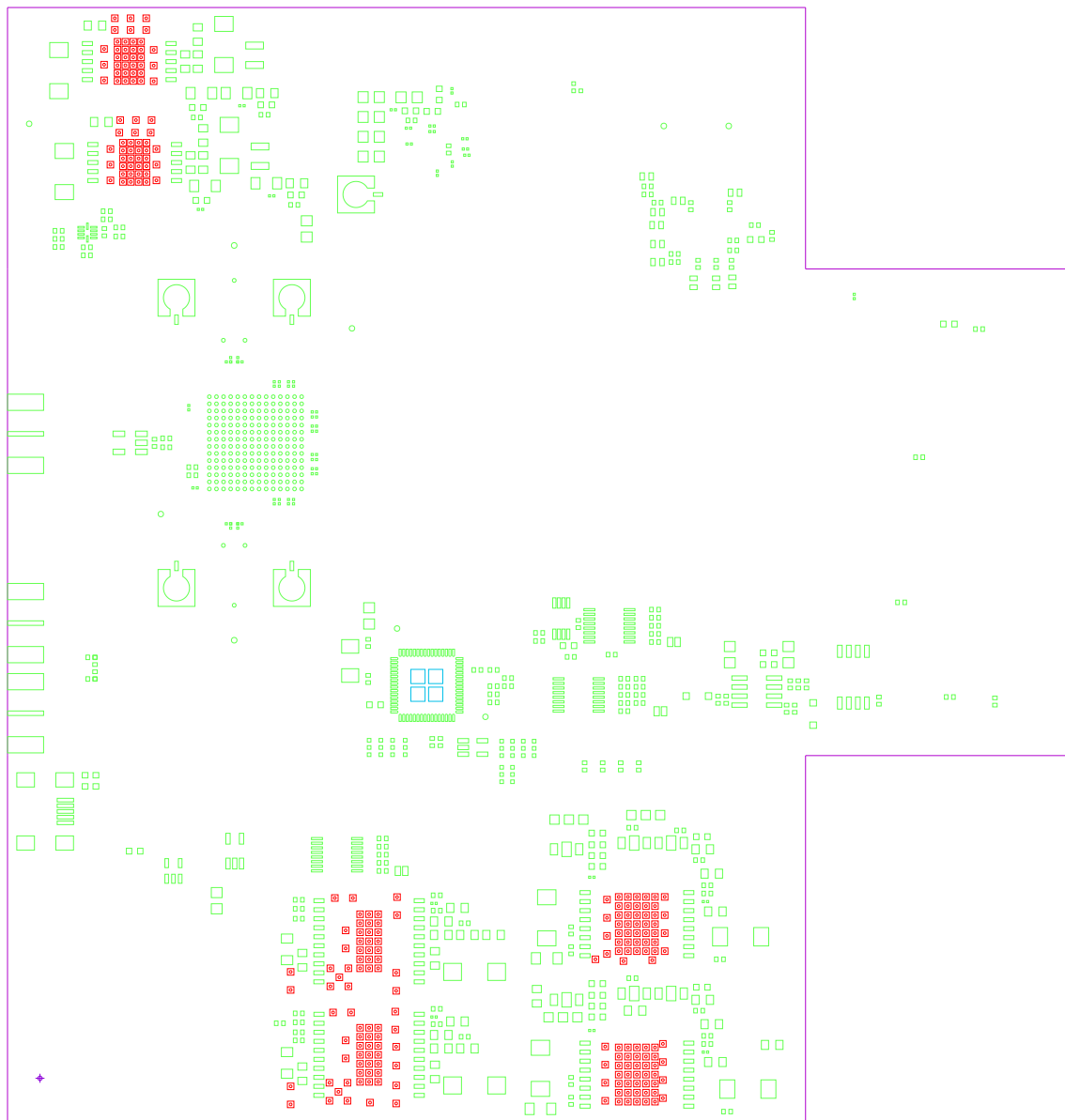
C17
 C123
 C129
 C272

LAYER 1 (TOP SIDE)



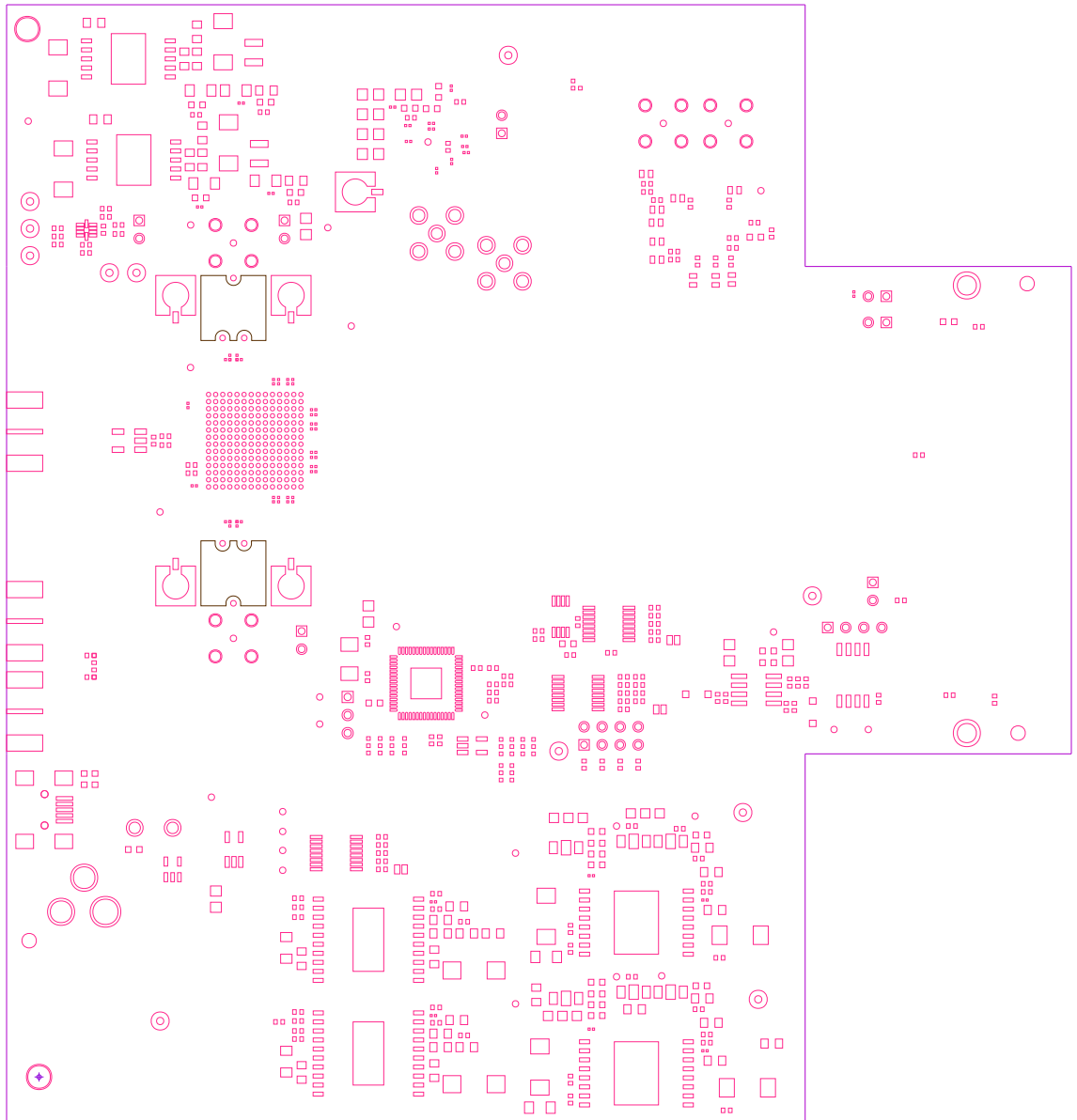
TEXAS INSTRUMENTS, INC.
 ADC12DJ3200EVMCVAL REV A
 DC004

LAYER 12 (BOTTOM SIDE)



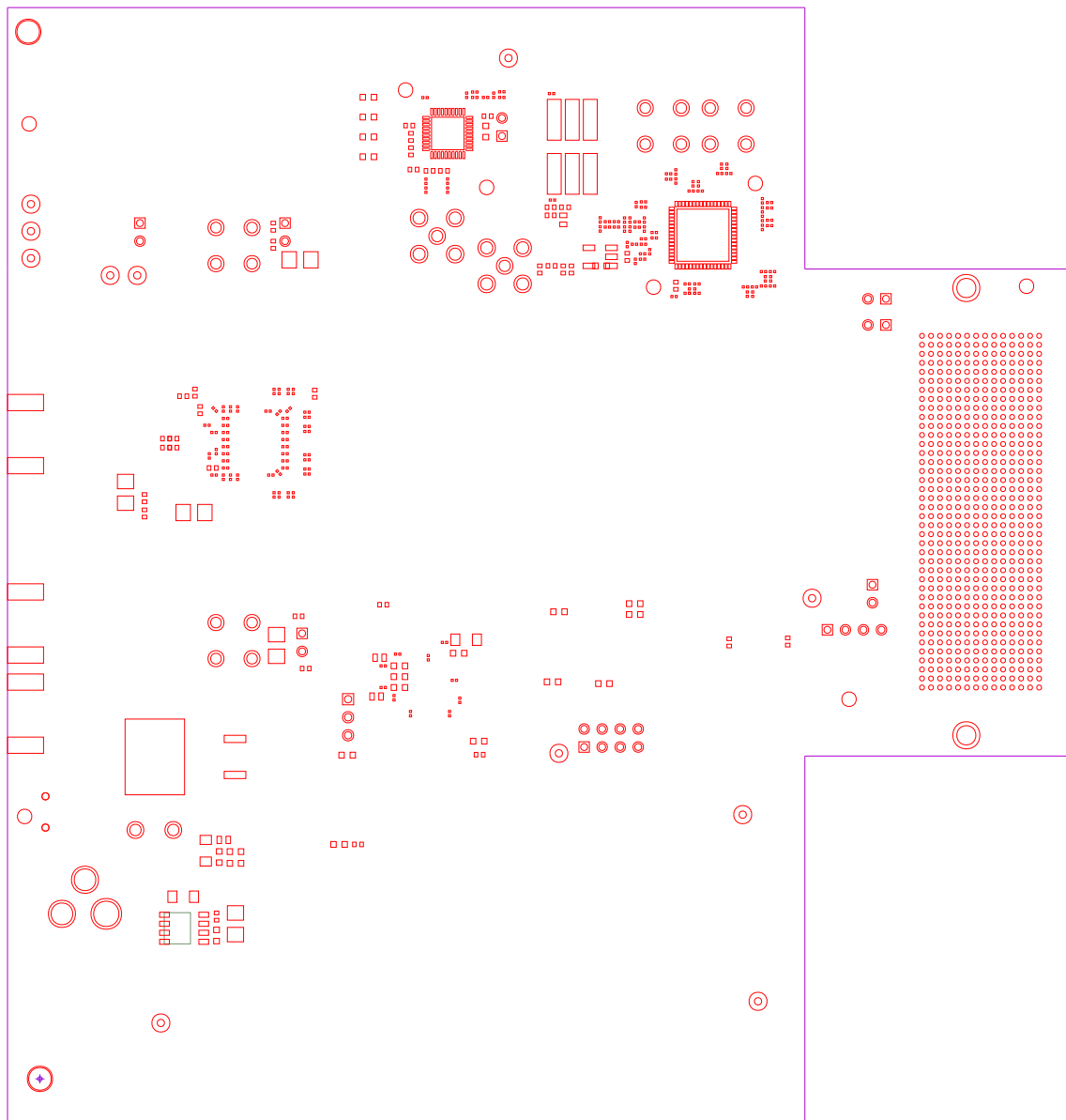
TEXAS INSTRUMENTS, INC.
ADC12DJ3200EVMCVAL REV A
DC004

PASTEMASK TOP



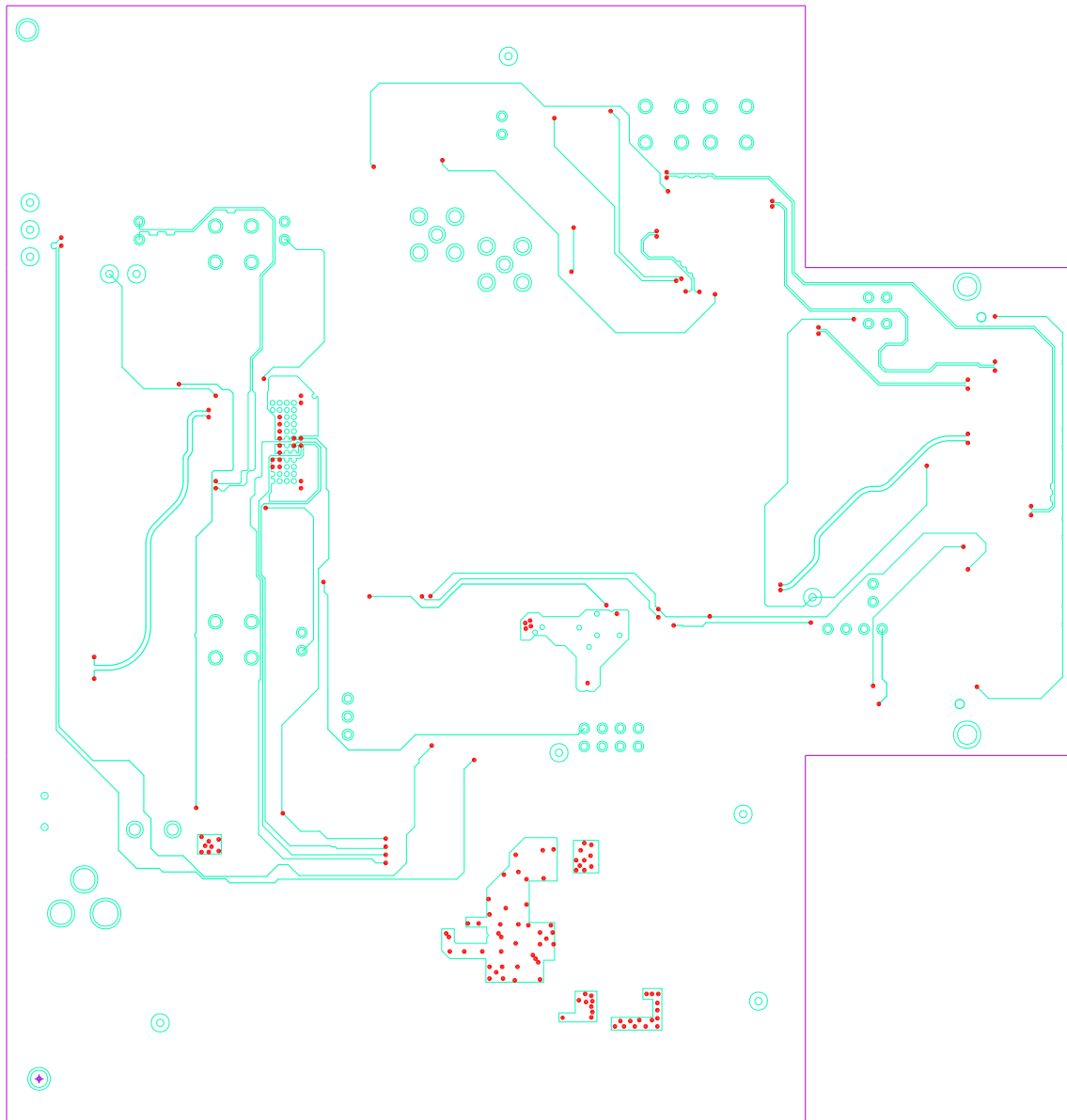
TEXAS INSTRUMENTS, INC.
ADC12DJ3200EVMCVAL REV A
DC004

SOLDERMASK TOP



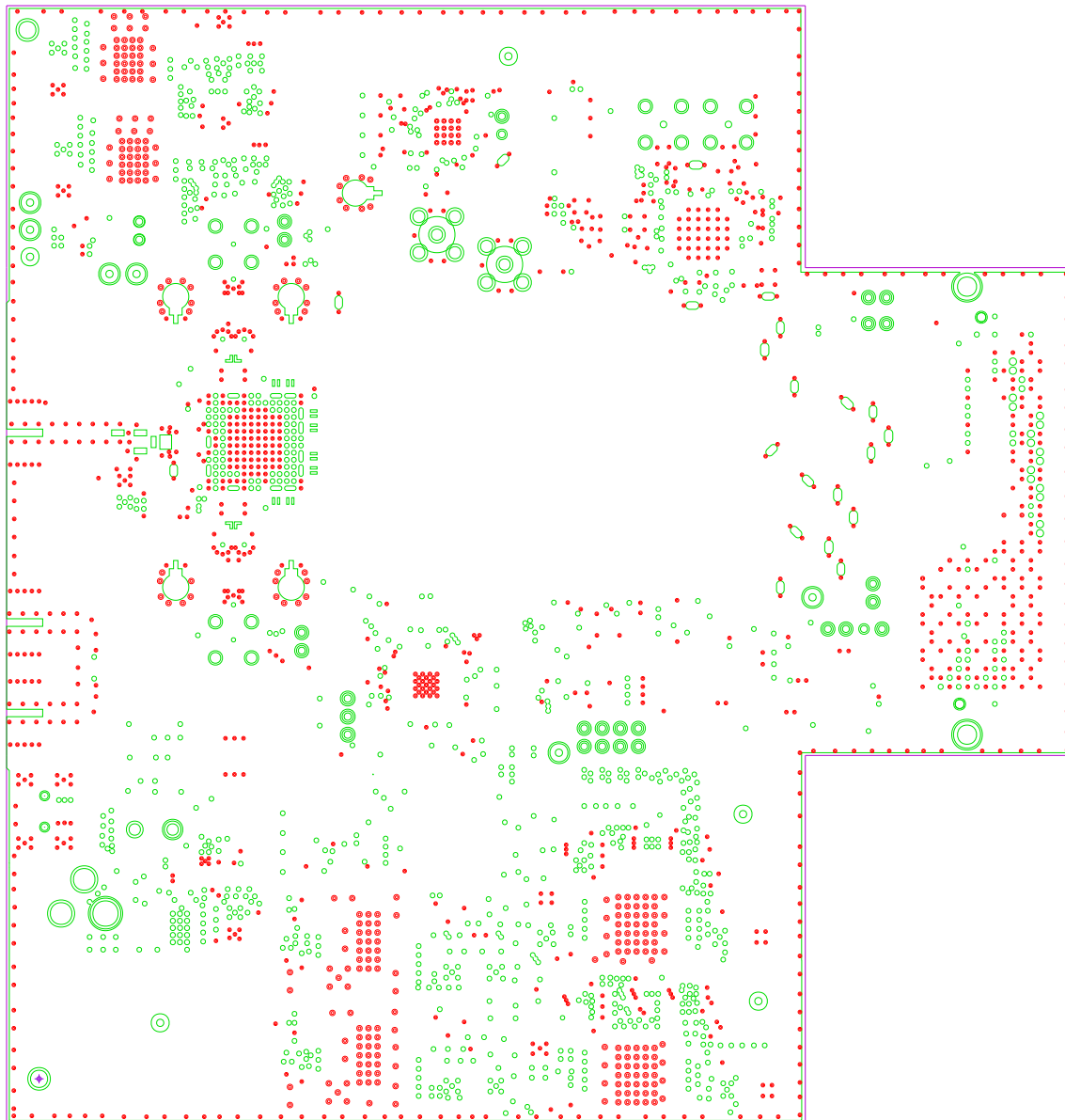
TEXAS INSTRUMENTS, INC.
ADC12DJ3200EVMCVAL REV A
DC004

SOLDERMASK BOTTOM



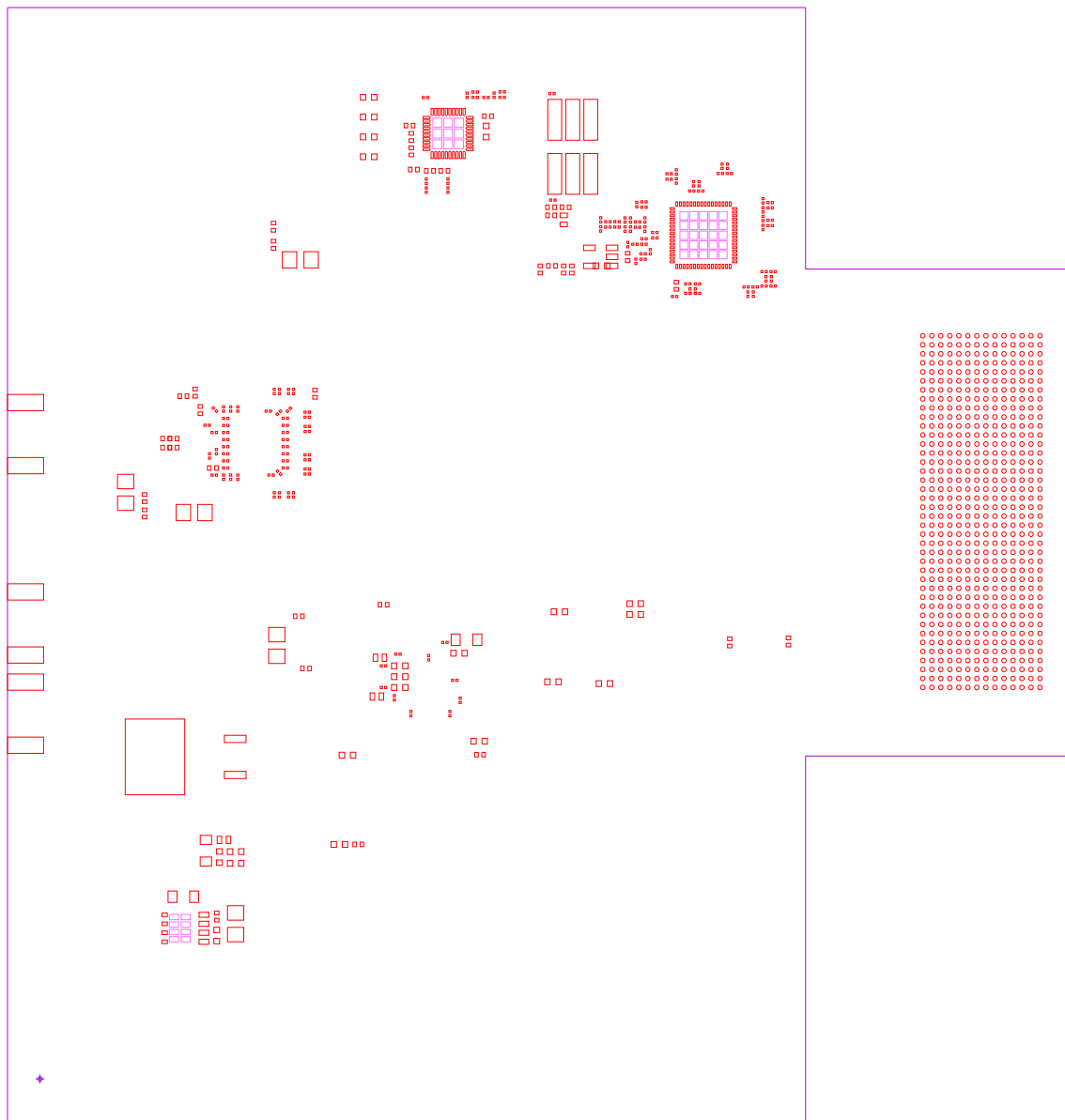
TEXAS INSTRUMENTS, INC.
ADC12DJ3200EVMCVAL REV A
DC004

LAYER 4 - SIG-1



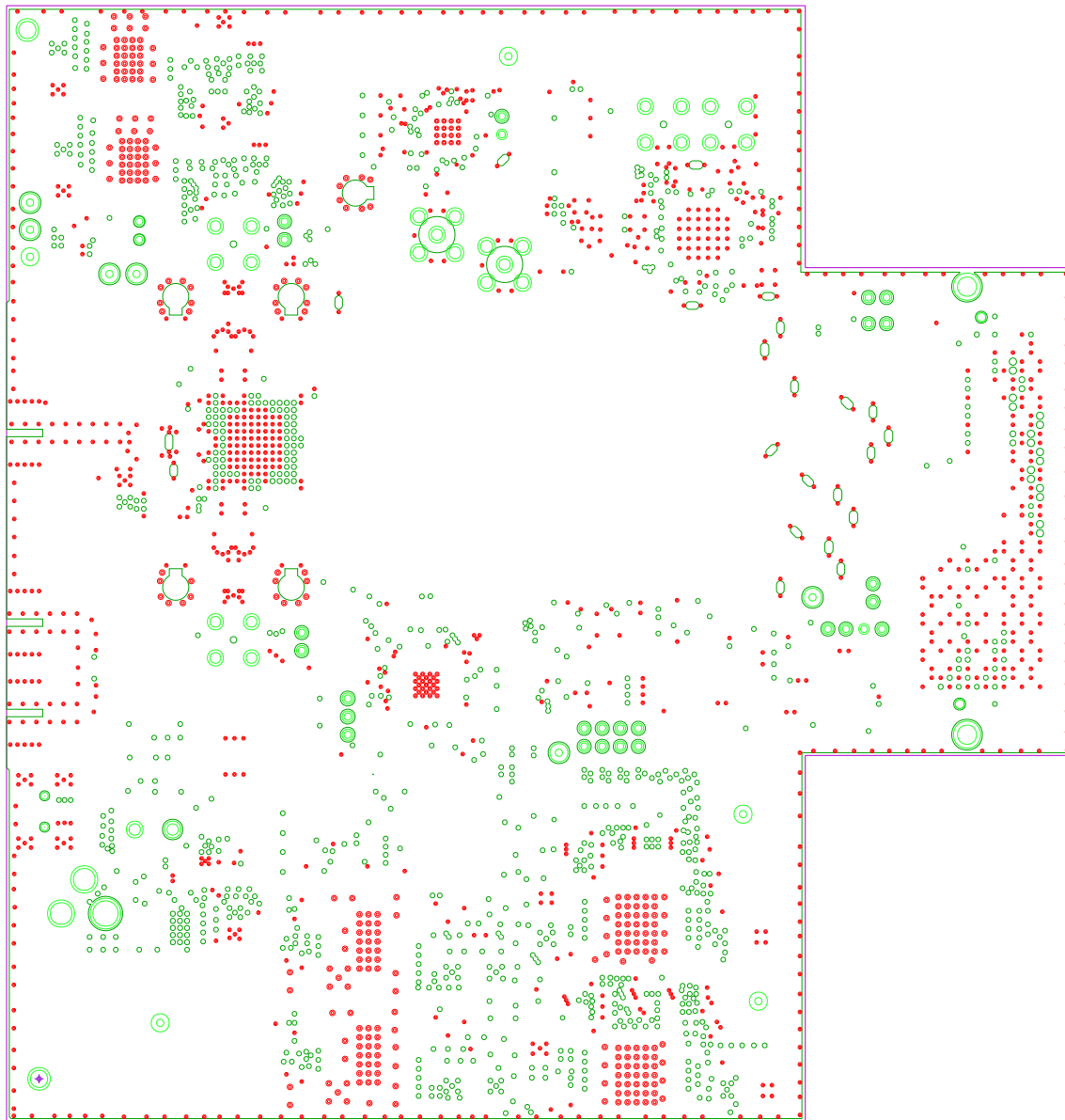
TEXAS INSTRUMENTS, INC.
ADC12DJ3200EVMCVAL REV A
DC004

LAYER 2 - GND



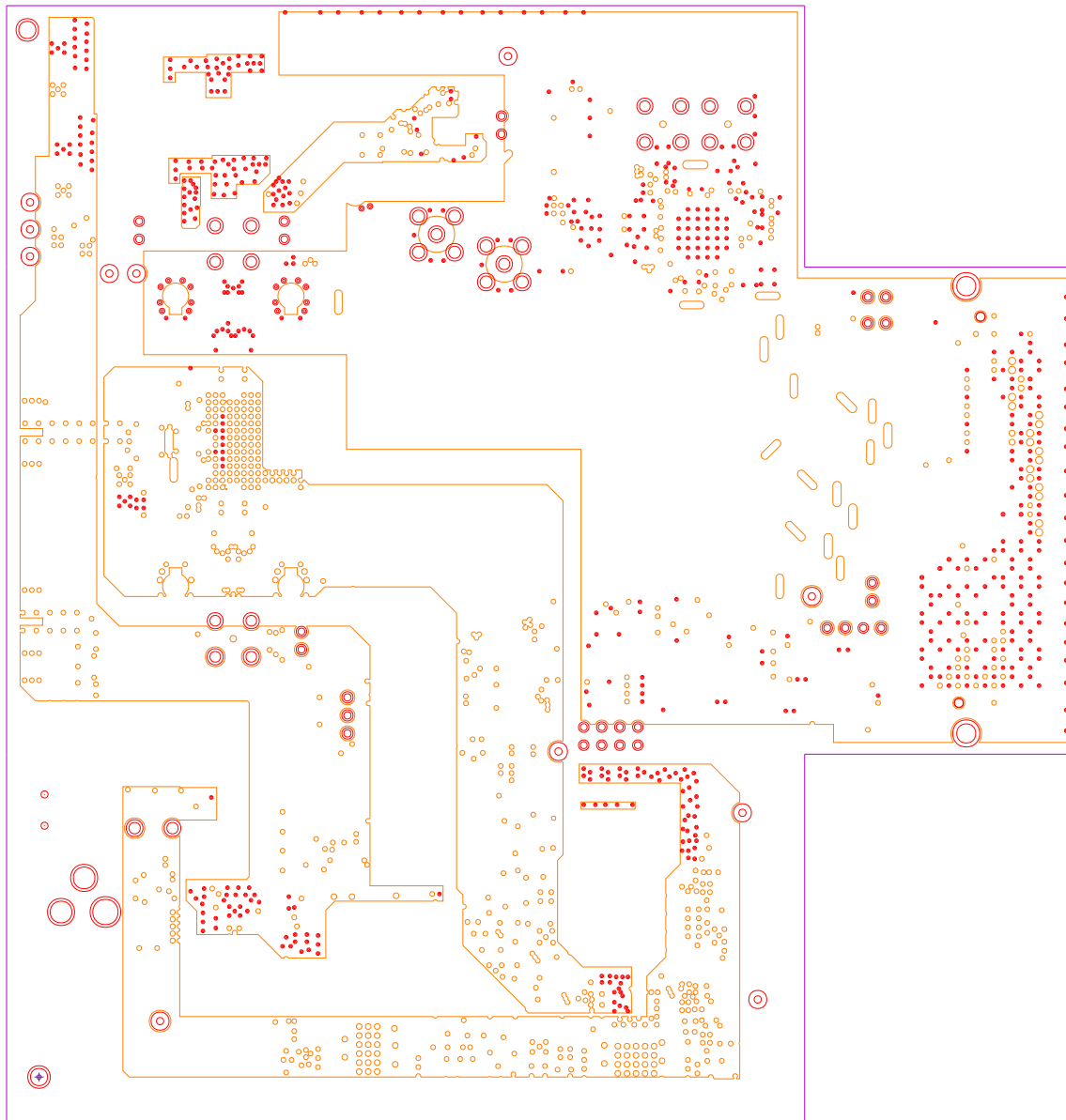
TEXAS INSTRUMENTS, INC.
ADC12DJ3200EVMCVAL REV A
DC004

PASTEMASK BOTTOM



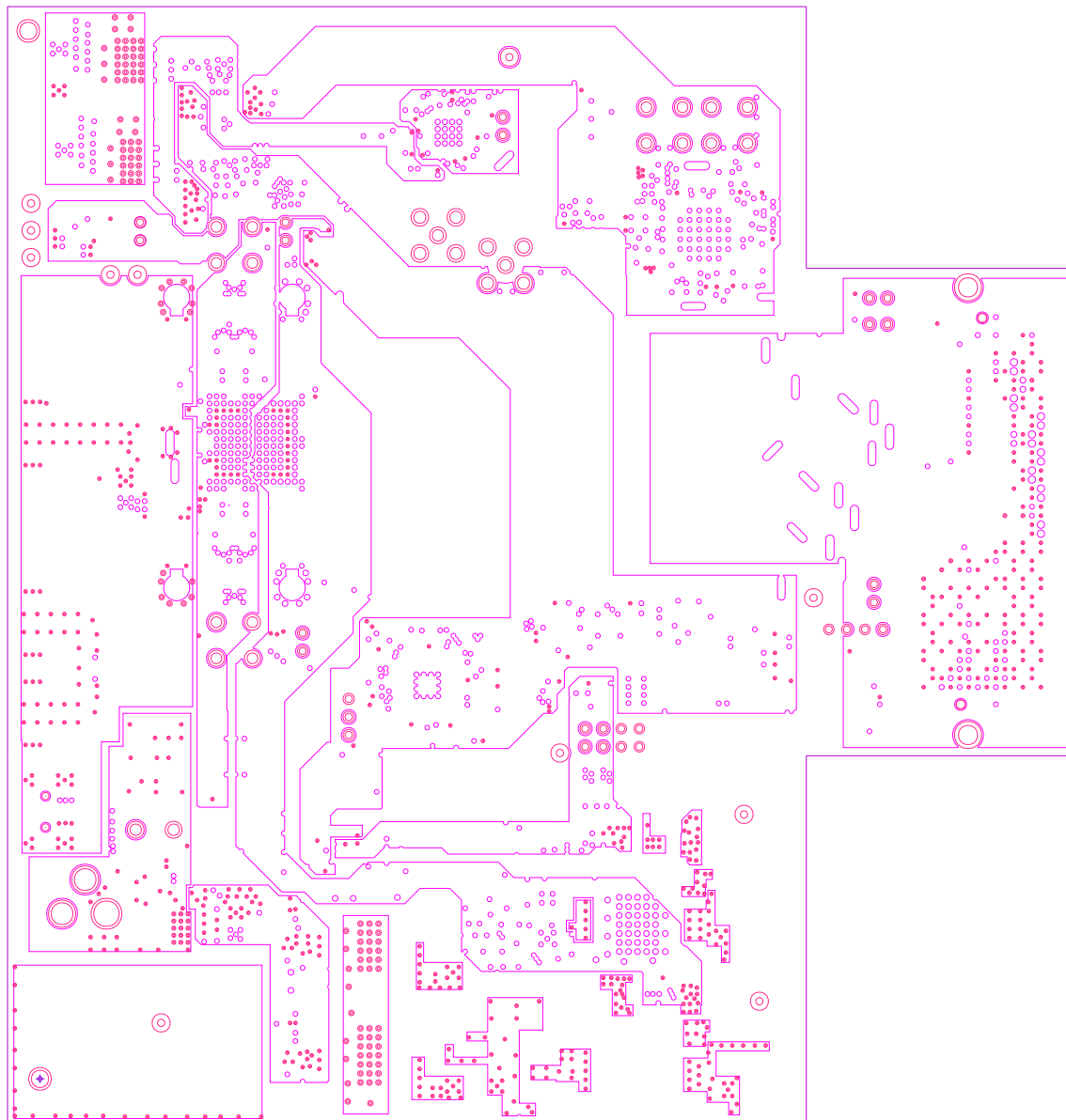
TEXAS INSTRUMENTS, INC.
ADC12DJ3200EVMCVAL REV A
DC004

LAYER 5 - GND



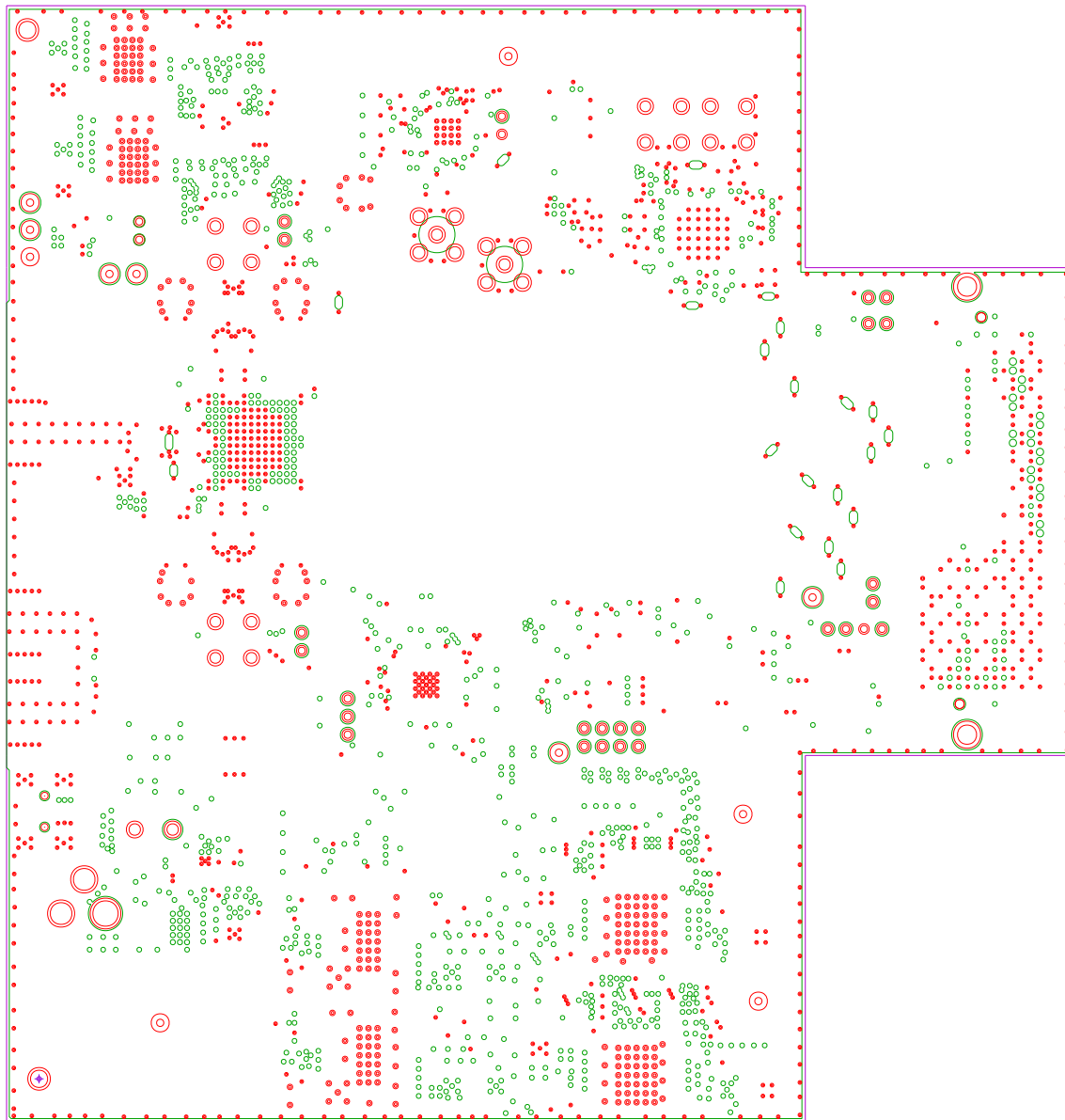
TEXAS INSTRUMENTS, INC.
ADC12DJ3200EVMCVAL REV A
DC004

LAYER 6 - PWR-1



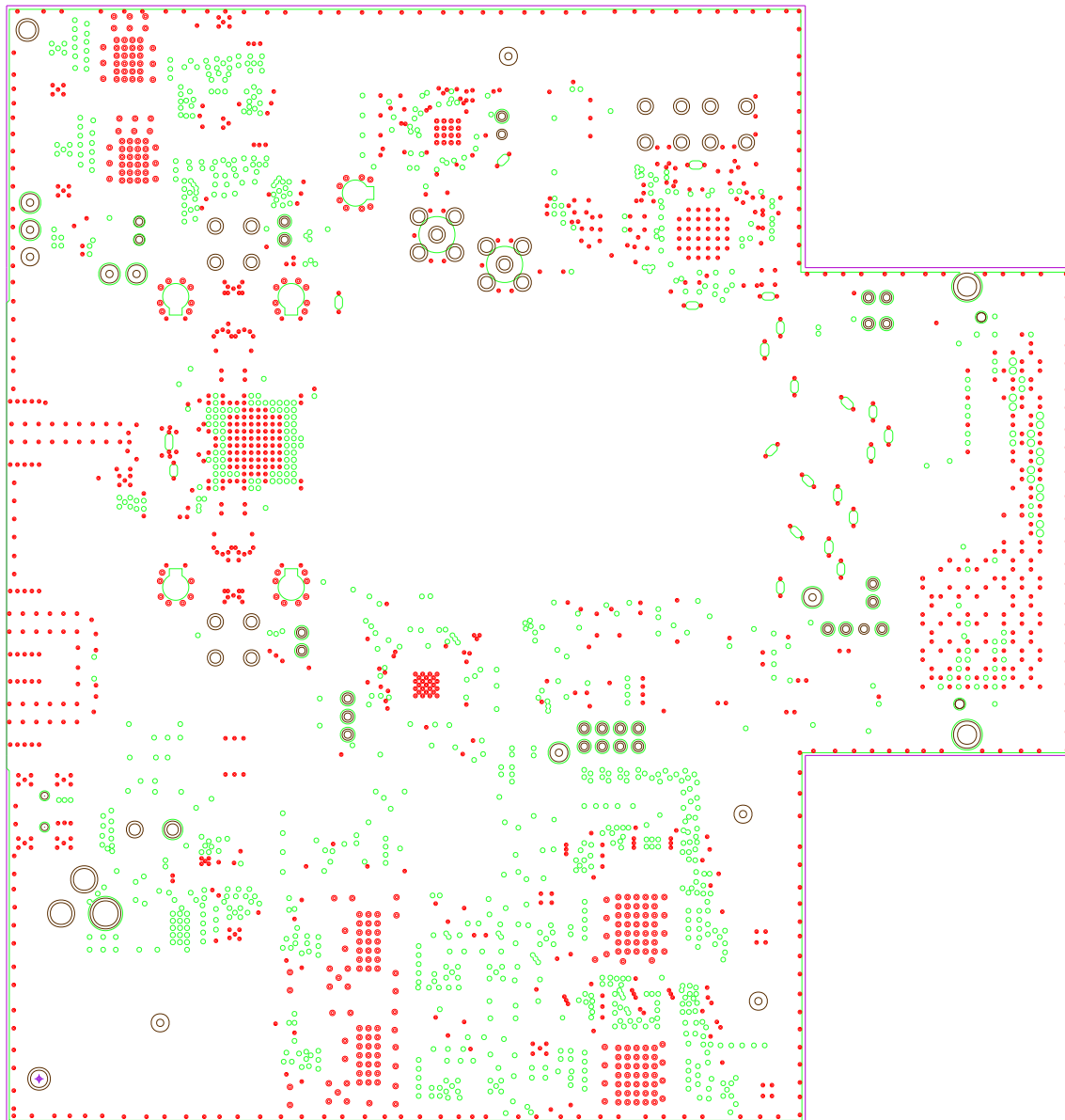
TEXAS INSTRUMENTS, INC.
ADC12DJ3200EVMCVAL REV A
DC004

LAYER 8 - PWR-2



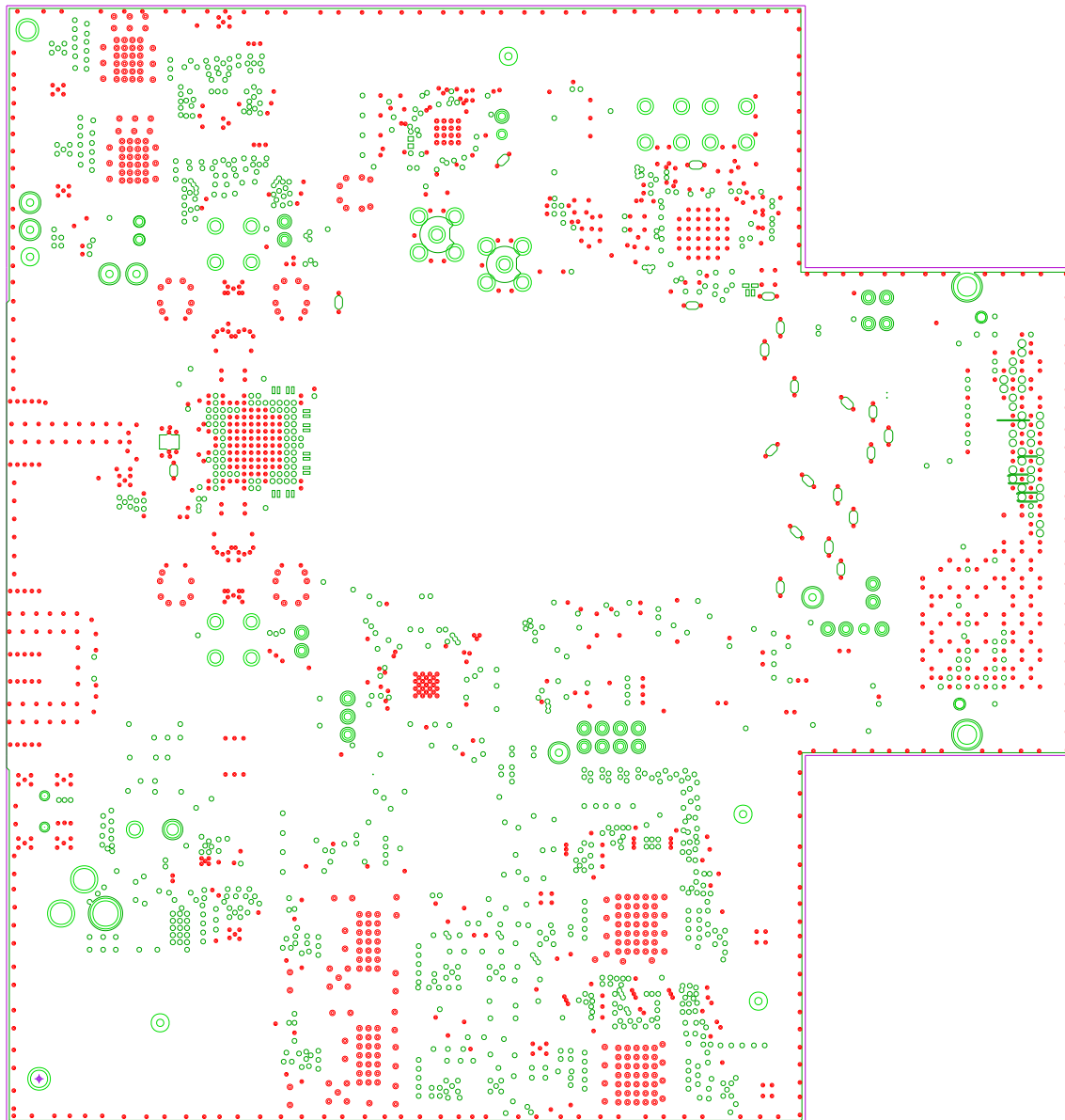
TEXAS INSTRUMENTS, INC.
ADC12DJ3200EVMCVAL REV A
DC004

LAYER 9 - GND



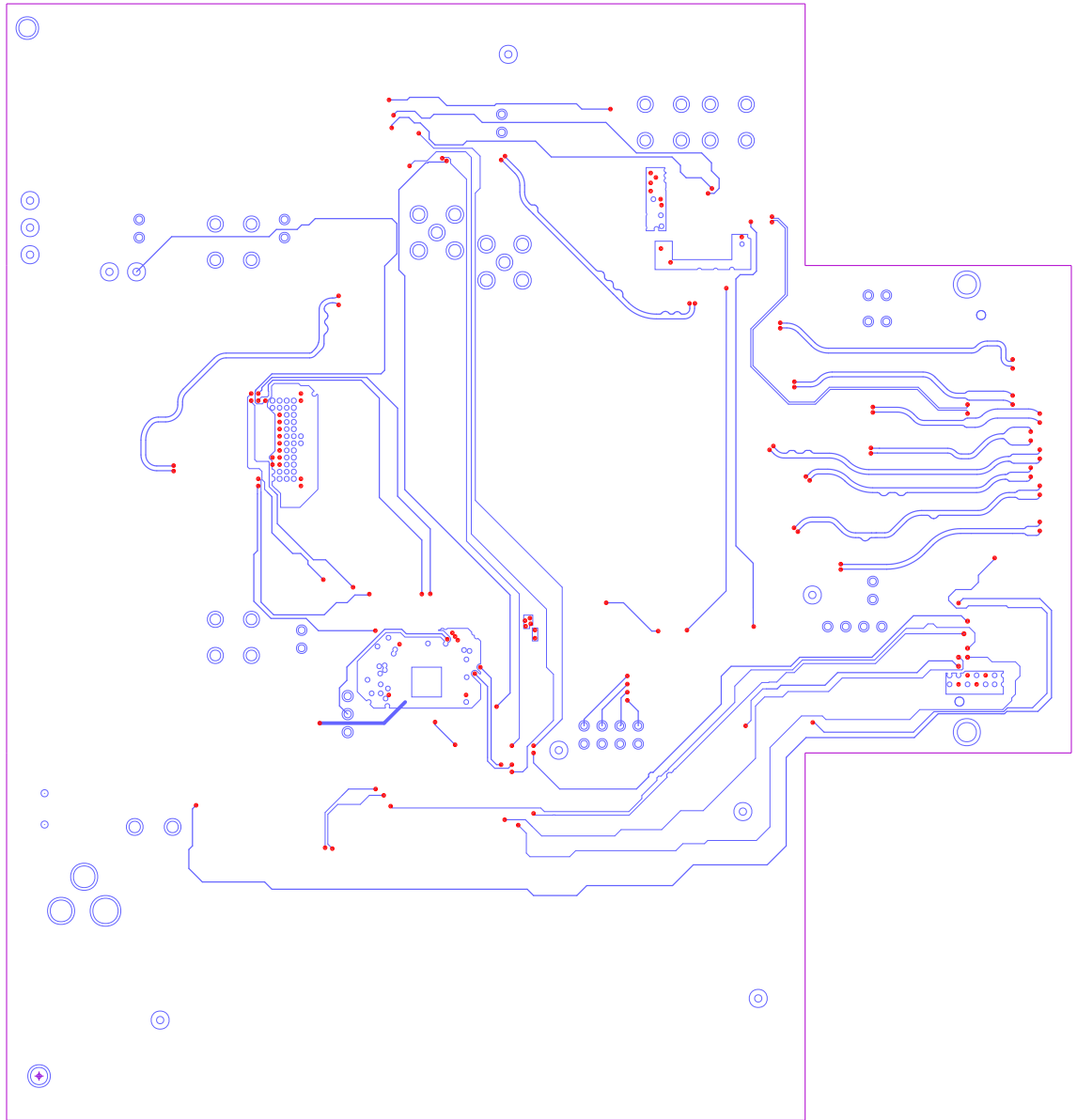
TEXAS INSTRUMENTS, INC.
ADC12DJ3200EVMCVAL REV A
DC004

LAYER 7 - GND



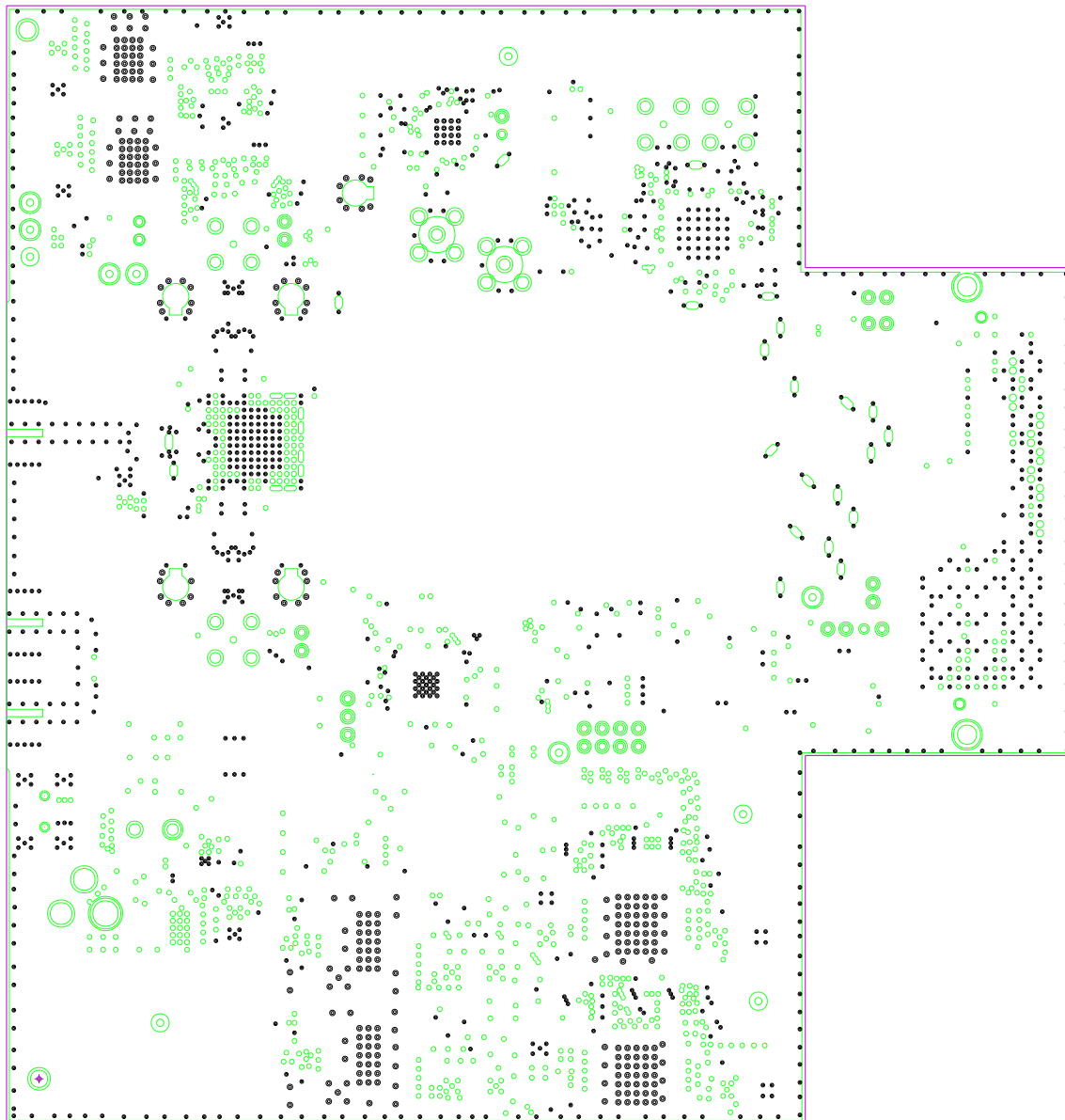
TEXAS INSTRUMENTS, INC.
ADC12DJ3200EVMCVAL REV A
DC004

LAYER 11 - GND



TEXAS INSTRUMENTS, INC.
ADC12DJ3200EVMCVAL REV A
DC004

LAYER 10 - SIG-2



TEXAS INSTRUMENTS, INC.
ADC12DJ3200EVMCVAL REV A
DC004

LAYER 3 - GND