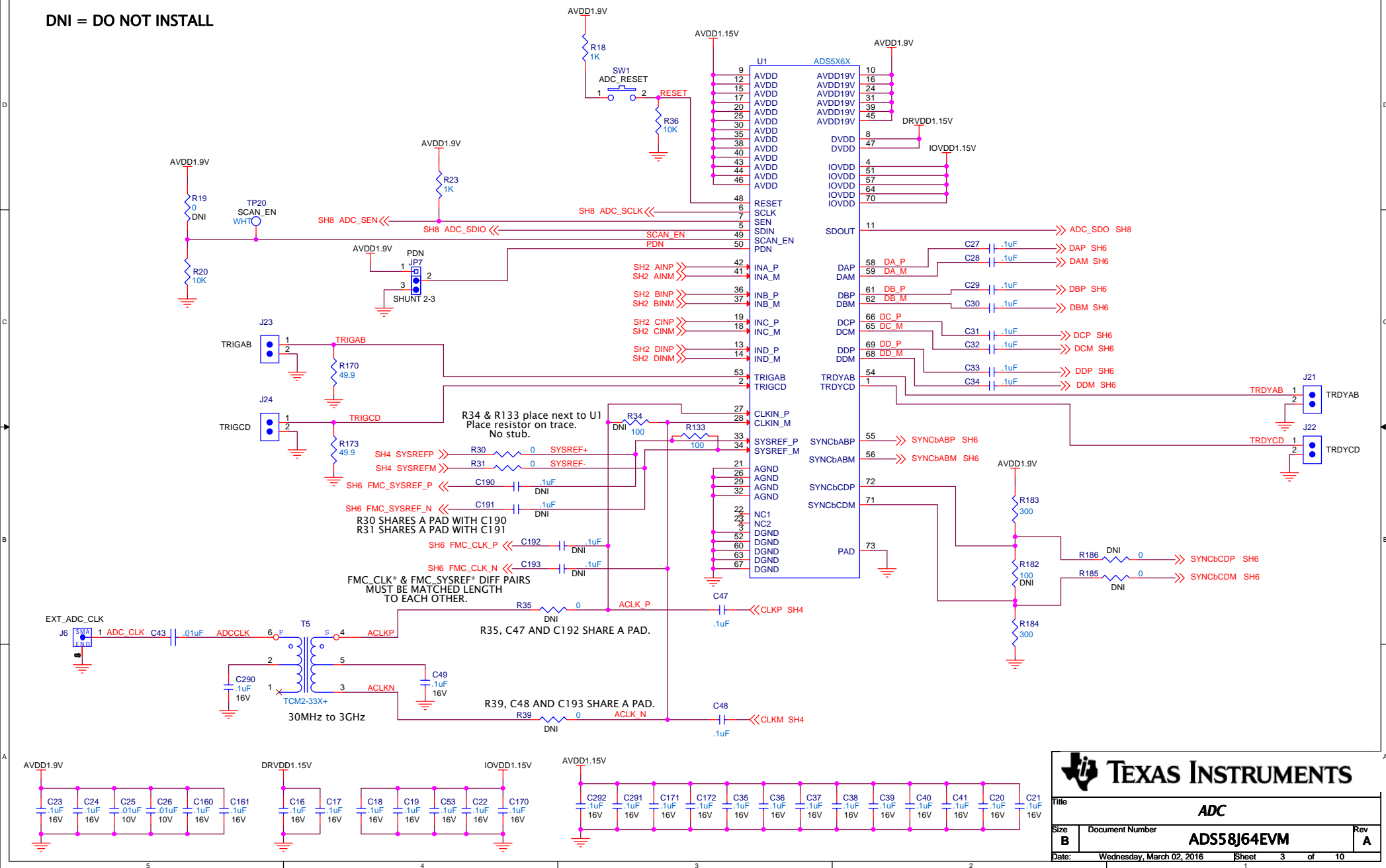
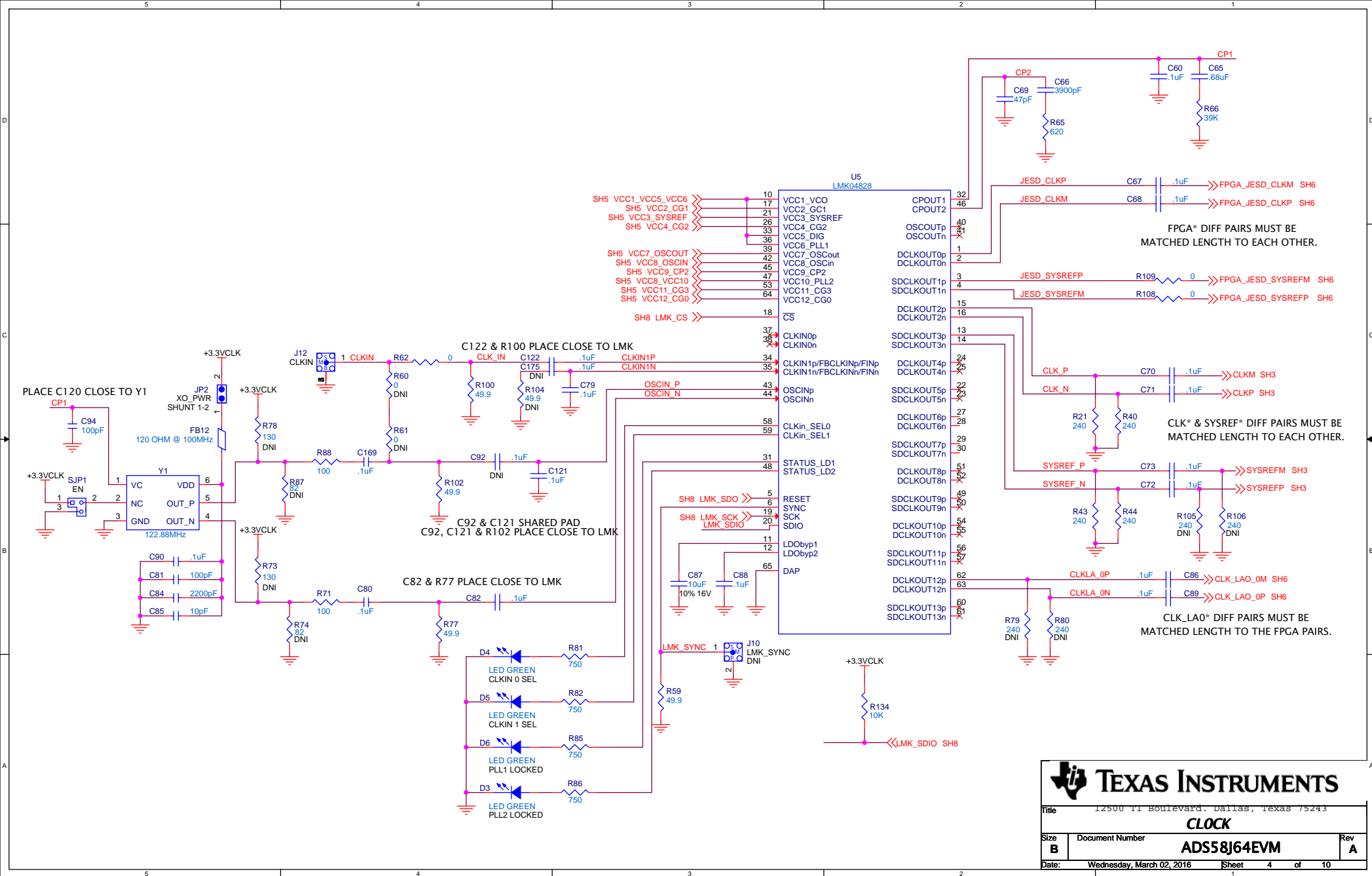
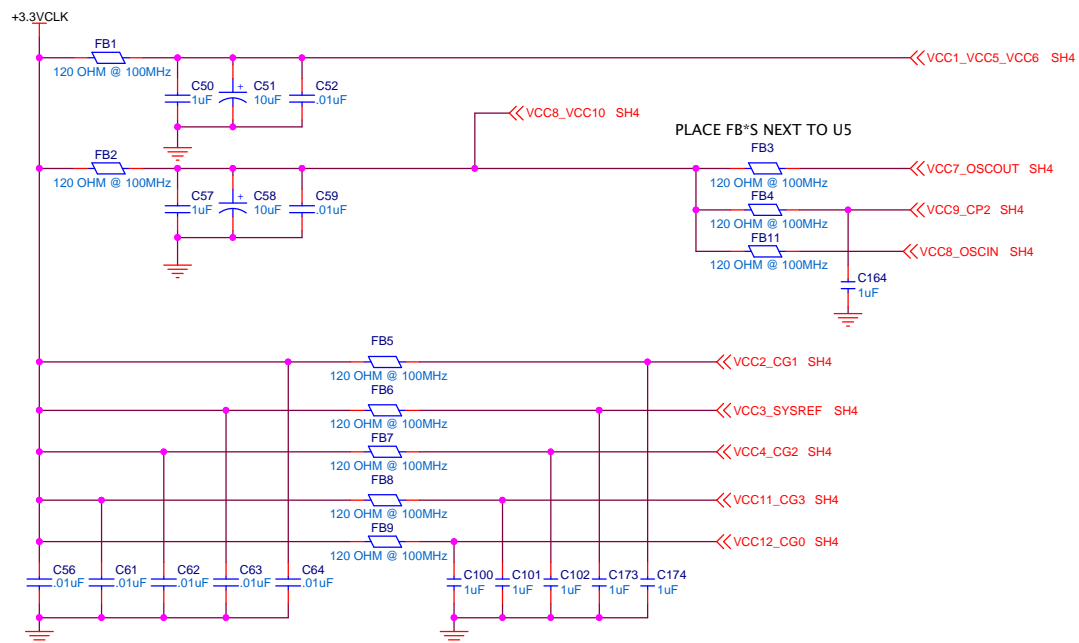


DNI = DO NOT INSTALL

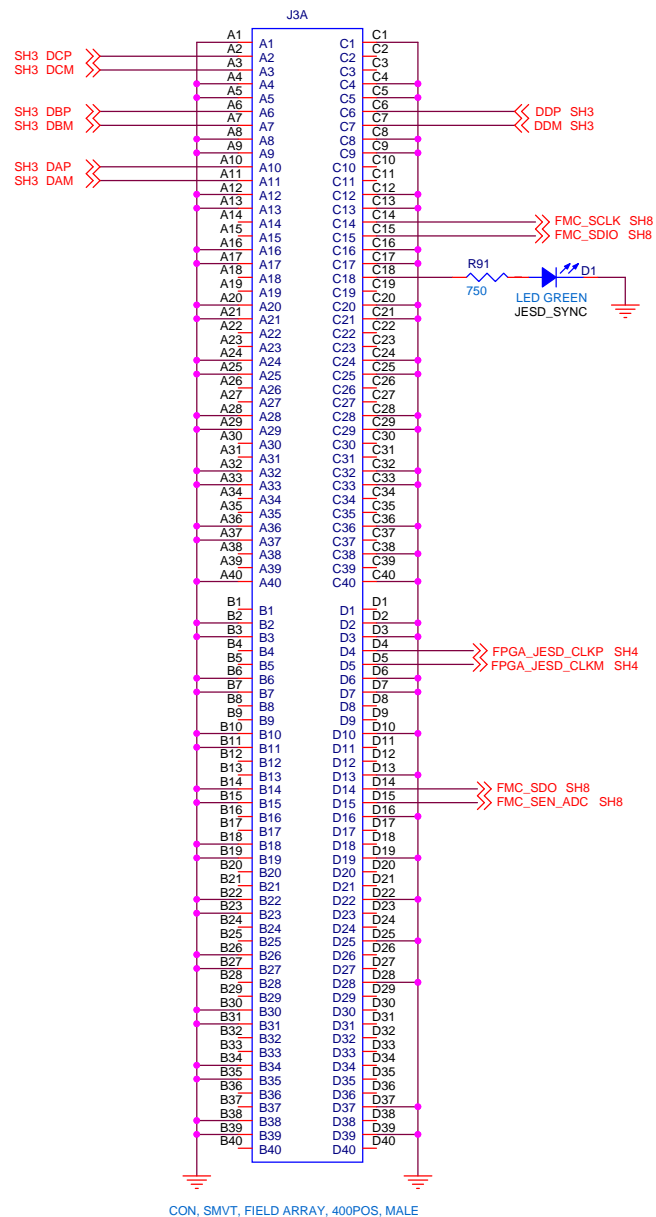


Title				ADC			
Size	Document Number						Rev
B	ADS58J64EVM						A
Date:	Wednesday, March 02, 2016			Sheet	3	of	10

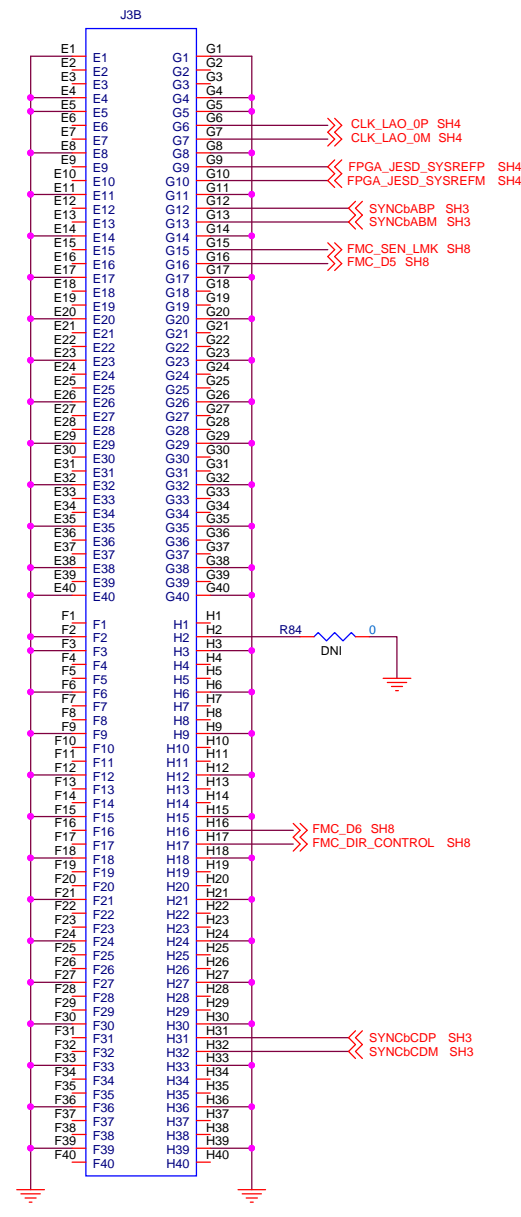




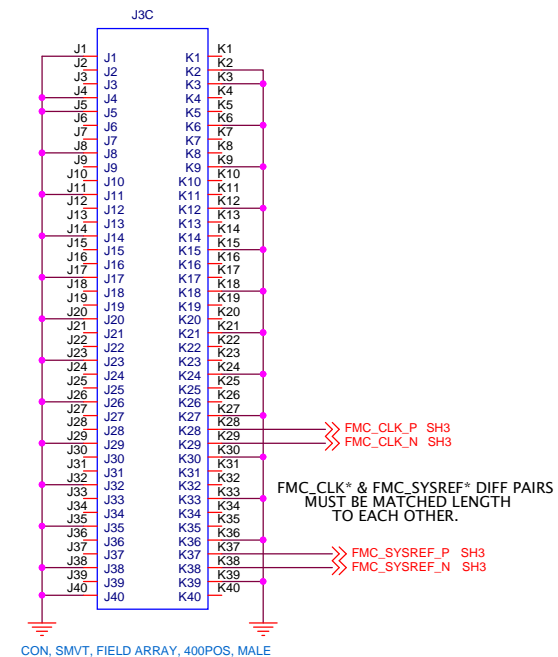
Title		
LMK POWER		
Size	Document Number	Rev
B	ADS58J64EVM	A
Date:	Wednesday, March 02, 2016	Sheet 5 of 10



CON, SMVT, FIELD ARRAY, 400POS, MALE



CON, SMVT, FIELD ARRAY, 400POS, MALE

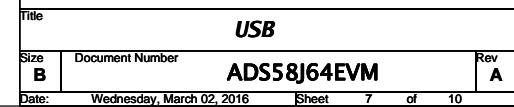


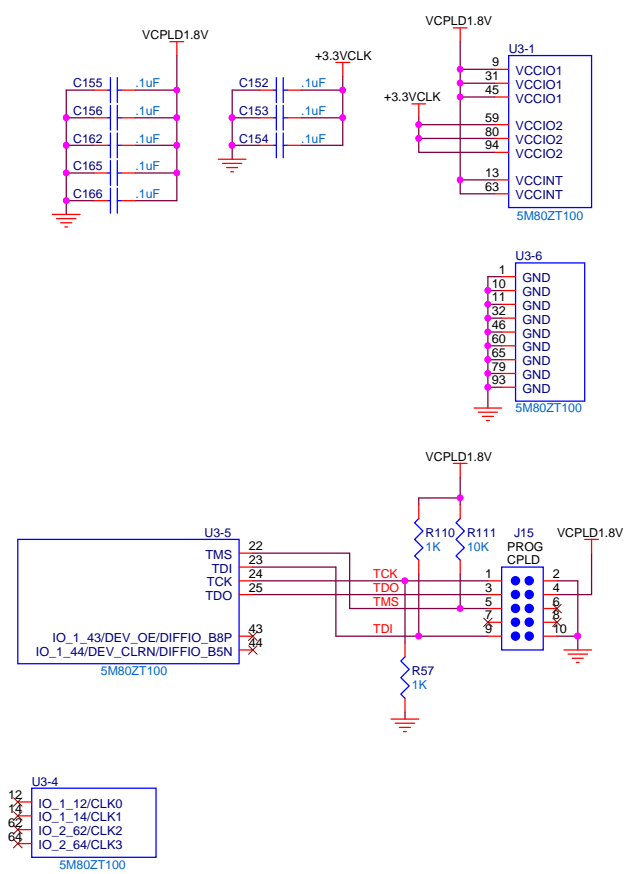
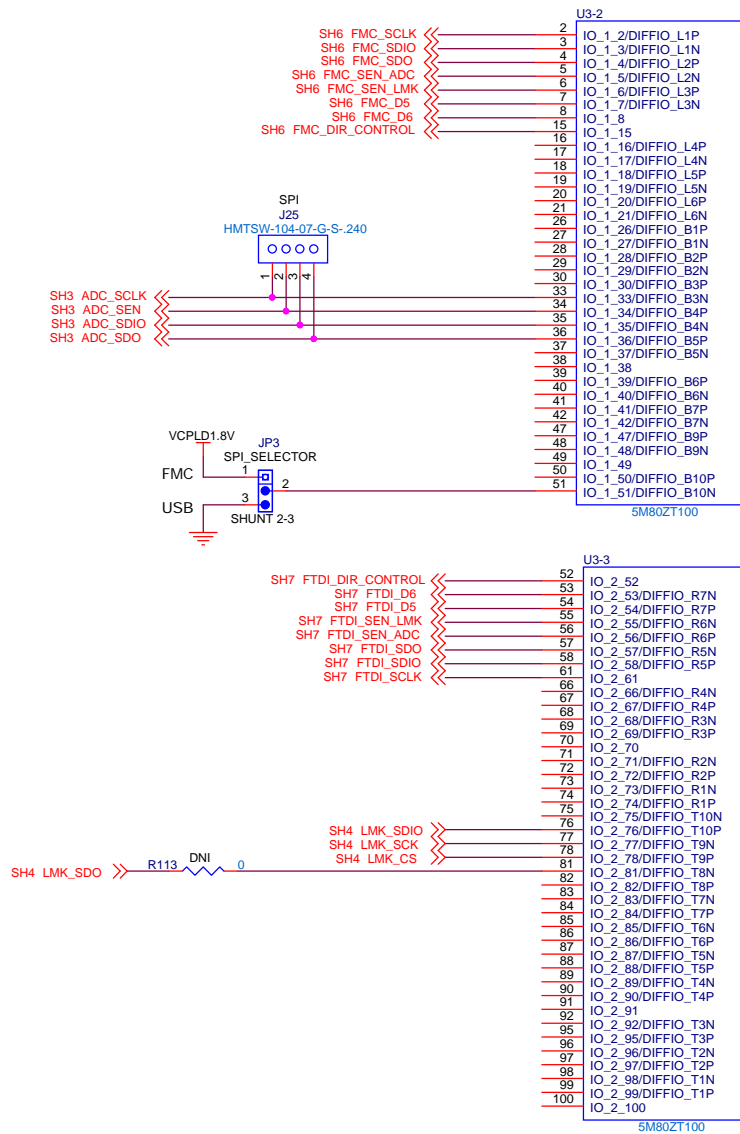
FMC_CLK* & FMC_SYSREF* DIFF PAIRS MUST BE MATCHED LENGTH TO EACH OTHER.

CON, SMVT, FIELD ARRAY, 400POS, MALE

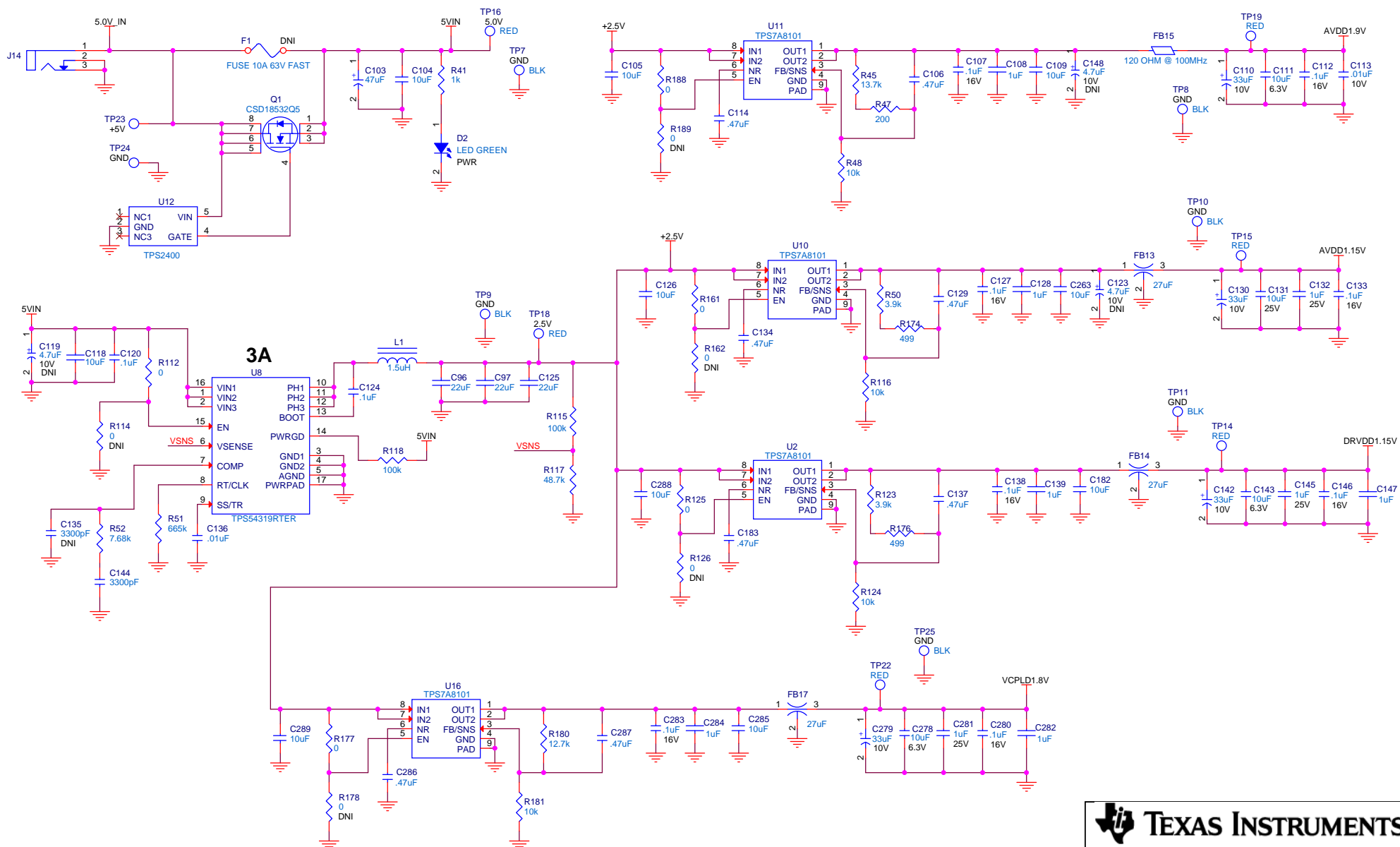
TEXAS INSTRUMENTS

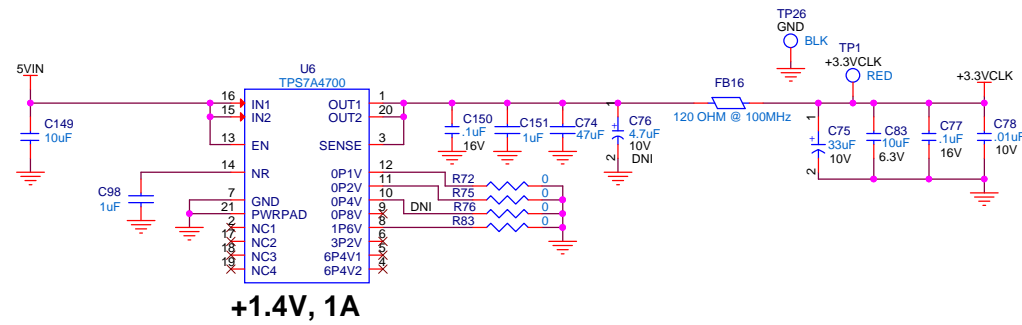
Title		
OUTPUT - FMC ONNECTOR		
Size	Document Number	Rev
B	ADS58J64EVM	A
Date:	Wednesday, March 02, 2016	Sheet 6 of 10



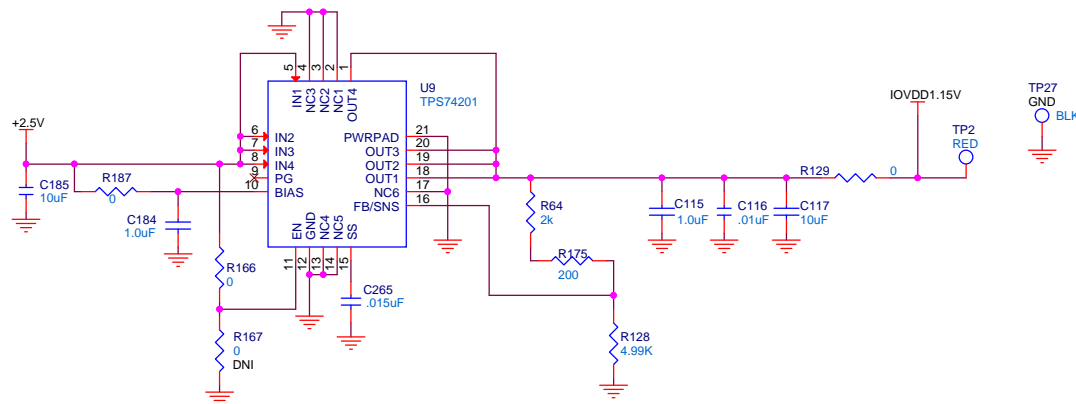
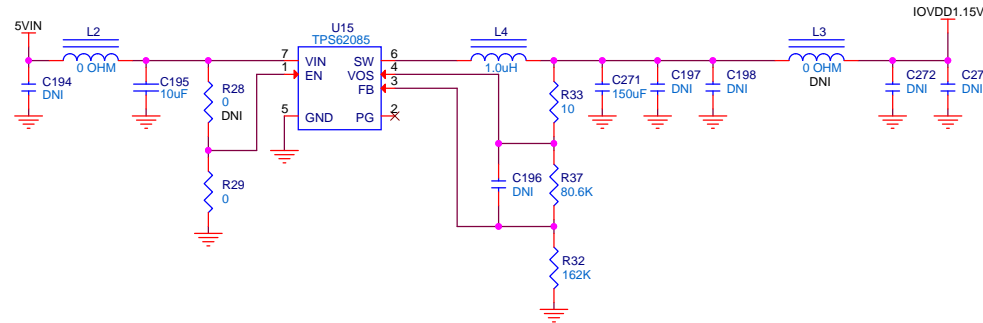


Title		
CPLD		
Size	Document Number	Rev
B	ADS58J64EVM	A
Date:	Wednesday, March 02, 2016	Sheet 8 of 10





BARE BOARD, ADS58J64



MECHANICAL PARTS

STANDOFF, FEMALE, 4-40 X 1 3/16", AL	SCREW, 4-40 X 3/4", PHIL, SS
STANDOFF, FEMALE, 4-40 X 1 3/16", AL	SCREW, 4-40 X 3/4", PHIL, SS
STANDOFF, FEMALE, 4-40 X 1 3/16", AL	SCREW, 4-40 X 3/4", PHIL, SS
STANDOFF, FEMALE, 4-40 X 1 3/16", AL	SCREW, 4-40 X 3/4", PHIL, SS
STANDOFF, FEMALE, 4-40 X 1 3/16", AL	SCREW, 4-40 X 3/4", PHIL, SS
STANDOFF, FEMALE, 4-40 X 1 3/16", AL	SCREW, 4-40 X 3/4", PHIL, SS



Title		
POWER 3.3V		
Size	Document Number	Rev
B	ADS58J64EVM	A
Date:	Wednesday, March 02, 2016	Sheet 10 of 10