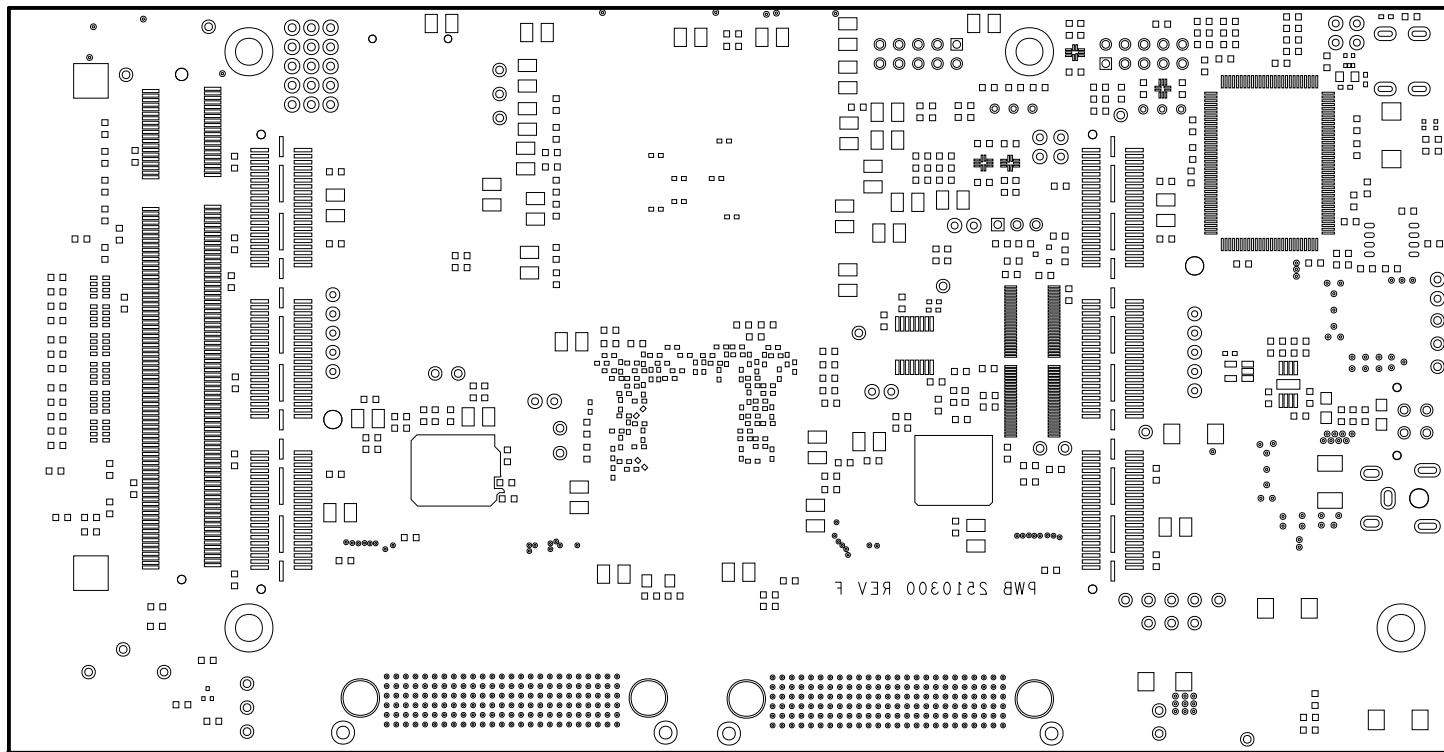
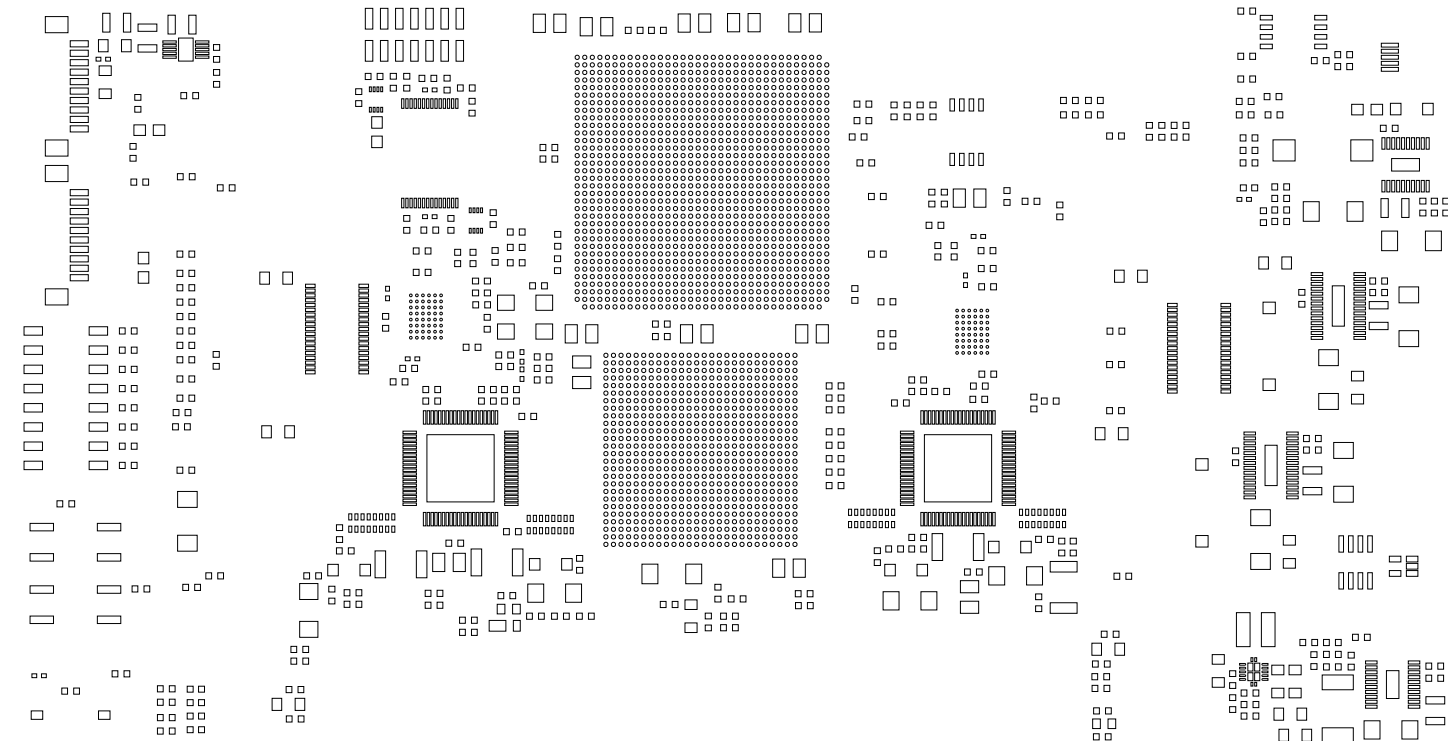


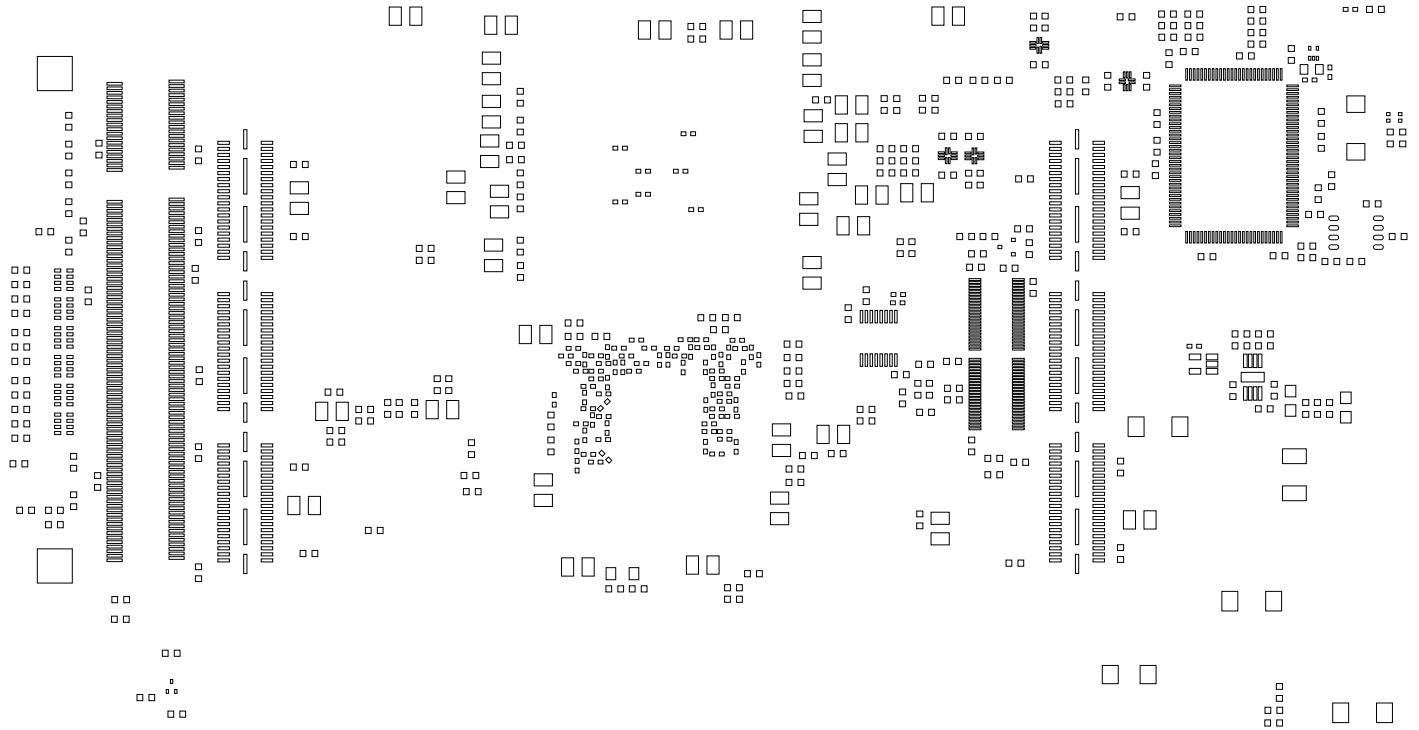
TEXAS INSTRUMENTS		
SOLDERMASK TOP SIDE	DLPLCRC410EVM	
DATE: 06/09/2023	REV: C	



TEXAS INSTRUMENTS			
SOLDERMASK BOTTOM SIDE		DLPLCRC410EVM	
DATE: 06/09/2023		REV: C	



TEXAS INSTRUMENTS	
SOLDER PASTE TOP	DLPLCRC410EVM
DATE : 06/09/2023	REV : C



TEXAS INSTRUMENTS		
SOLDER PASTE BOTTOM	DLPLCRC410EVM	
DATE: 06/09/2023	REV: C	



REV: C



TEXAS INSTRUMENTS		
SILKSCREEN BOTTOM	DLPLCRC410EVM	
DATE: 06/09/2023	REV: C	

12. BY DESIGN ALL SIGNALS ARE 50ohms. EXCEPTIONS: PWR NETS, DIFF PAIRS, BGA FANOUTS AND DMD FANOUTS.

13. ALL BOARDS MUST MEET OR EXCEED UL94-V0 REQUIREMENTS. PCB MUST BARE THE UL94-V0 UL REGISTERED MATERIAL ID NUMBER.

14. 0.008" VIAS TO BE COVERED WITH LPI SOLDERMASK ON BOTTOM(TESTER) SIDE OF THE BOARD.

10. CHANGE ALL 8 AND 10MIL VIAS TO DIRECT PLANE CONNECTIONS.

11. BOARD TO BE FINISHED ENIG. 100-150 NICKEL and 3-5 GOLD

9b. LAYERS 16 AND 18 HAS 50ohm 5% SINGLE ENDED ROUTING AND USE THE FOLLOWING:  
4.01MIL TRACE WIDTH.

9a. LAYERS TOP,3,5,7,9,12,14,16,18 AND BOTTOM HAS 50ohm 5% SINGLE ENDED ROUTING AND USE THE FOLLOWING:  
3.99MIL TRACE WIDTH.

8b. LAYERS 3,5,7,12,14,16 AND 18 HAVE 100ohm %5 DIFF PAIR AND USE THE FOLLOWING:  
3.99MIL TRACE WITH 6MIL SPACE.

8a. LAYERS 3,16 AND 18 HAVE 100ohm %5 DIFF PAIR AND USE THE FOLLOWING:  
4.01MIL TRACE WITH 6MIL SPACE.

7. MAXIMUM WARP AND TWIST TO BE 0.005 INCH PER INCH.

6. APPLY WHITE LPI SILKSCREEN TO BOTH SIDES PER ARTWORK.

5. SOLDERMASK BOTH SIDES: RED

4. FINISHED THICKNESS: 0.100 +/- 0.007"

3. LAMINATE MATERIAL: POLYCLAD PC-FR-370HR OR ISOLA IS410 MATERIAL.

2. FABRICATOR AND ASSEMBLER MUST FOLLOW IPC-1066 FOR ALL MARKING AND LABELING.

1. ALL FABRICATION ITEMS MUST MEET OR EXCEED BEST INDUSTRY PRACTICE.  
IPC-A-600C (COMMERICAL STD.).

THIS PRODUCT MUST BE RoHS COMPLIANT. VENDORS MUST FOLLOW DIRECTIVE 2002/95/EC OF THE EUROPEAN PARLIAMENT, ALSO KNOWN AS THE "RoHS DIRECTIVE".

NOTES:

DRILL CHART: TOP to BOTTOM

ALL UNITS ARE IN MILS

FIGURE	SIZE	TOLERANCE	PLATED	QTY
A	8.0	+3.0/-3.0	PLATED	3637
B	10.0	+3.0/-3.0	PLATED	332
C	12.0	+3.0/-3.0	PLATED	66
D	27.95	+1.97/-1.97	PLATED	6
E	32.0	+3.0/-3.0	PLATED	10
F	36.0	+3.0/-3.0	PLATED	16
G	40.0	+2.0/-2.0	PLATED	24
H	40.0	+3.0/-3.0	PLATED	38
I	41.0	+3.0/-3.0	PLATED	15
J	66.0	+3.0/-3.0	PLATED	4
K	140.0	+3.0/-3.0	PLATED	4
L	39.0	+3.0/-3.0	NON-PLATED	2
M	40.0	+2.0/-2.0	NON-PLATED	2
N	44.0	+3.0/-3.0	NON-PLATED	5
O	64.0	+3.0/-3.0	NON-PLATED	1
P	95.0	+3.0/-3.0	NON-PLATED	2
Q	96.0	+2.0/-2.0	NON-PLATED	1
R	180.0	+10.0/-10.0	NON-PLATED	4
S	75.0x27.0	+2.0/-2.0	PLATED	4
T	80.0x40.0	+2.0/-2.0	PLATED	1
U	80.0x40.0	+2.0/-2.0	PLATED	2
V	96.0x32.0	+2.0/-2.0	PLATED	2

3.878

0

7.500

0

APPROVED

CHECKED

DRAFTING

DATE 06/09/2023

DESIGN ENGR

PROJECT ENGR

ENGR MGR

NEXT ASSEMBLY

ENGR

TOLERANCES UNLESS OTHERWISE SPECIFIED

X.XX ± 0.01

X.XXX ± 0.005

ANGLES ± 1/2°

DO NOT SCALE DRAWING

TEXAS INSTRUMENTS

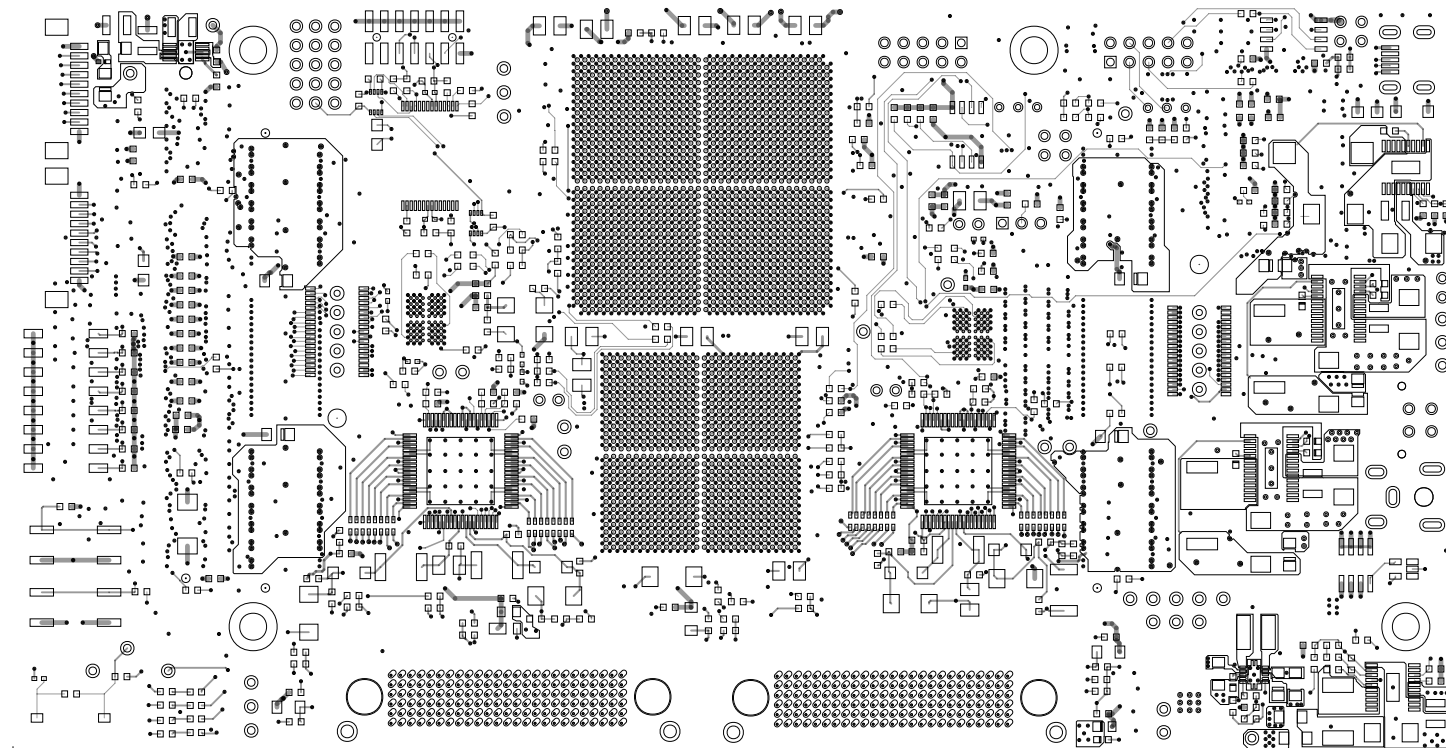
FABRICATION DRAWING

DLPLCRC410EVM

SCALE NONE

SHEET 1 OF 1

SIZE D



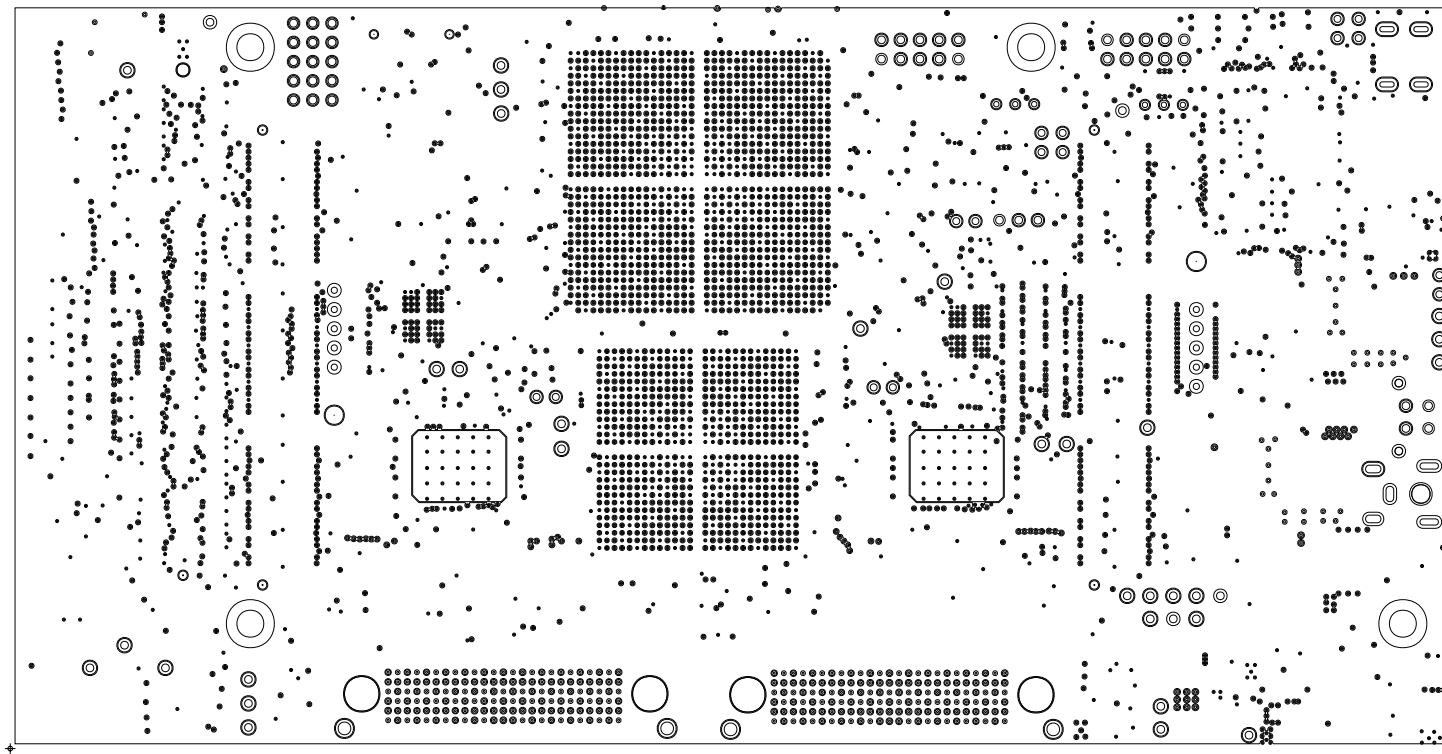
TEXAS INSTRUMENTS

LAYER 1/20  
TOP SIDE

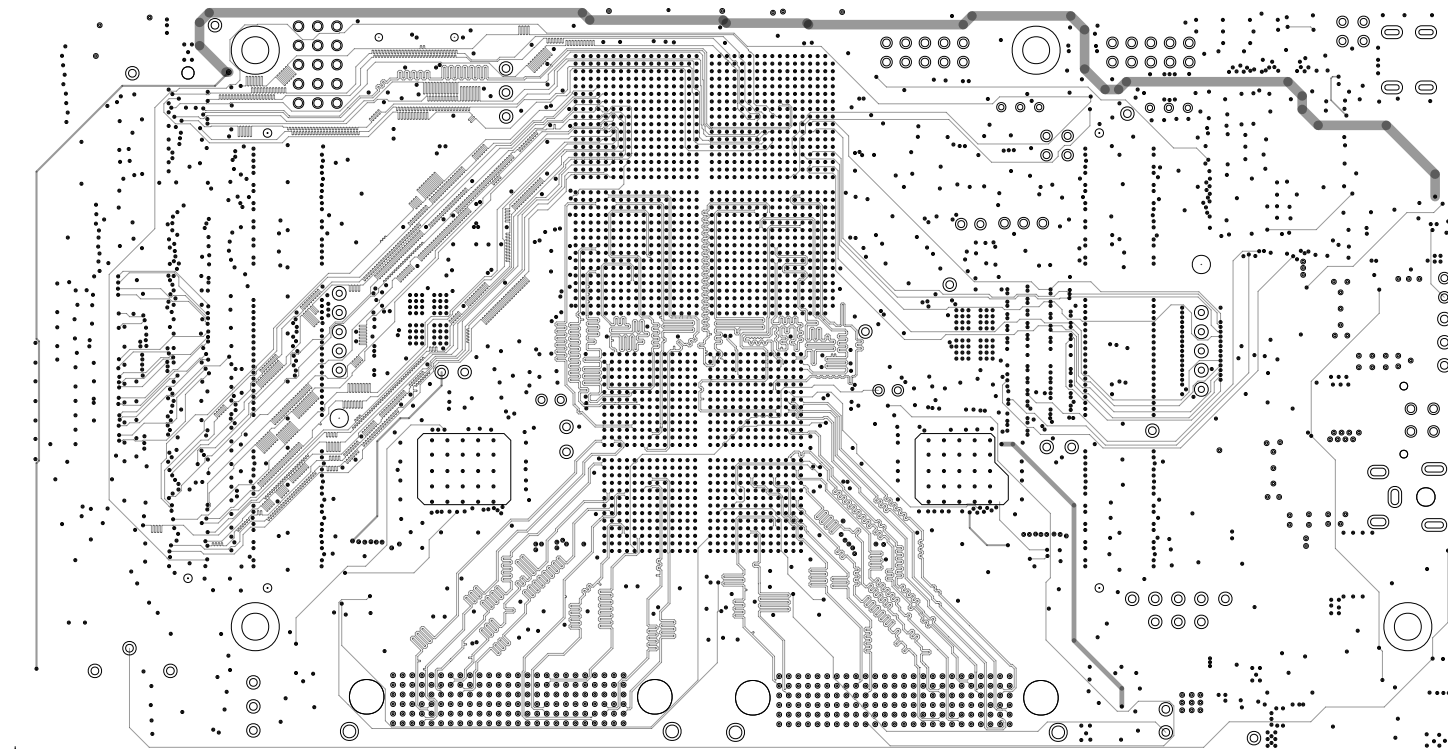
DLPLCRC410EVM

DATE: 06/09/2023

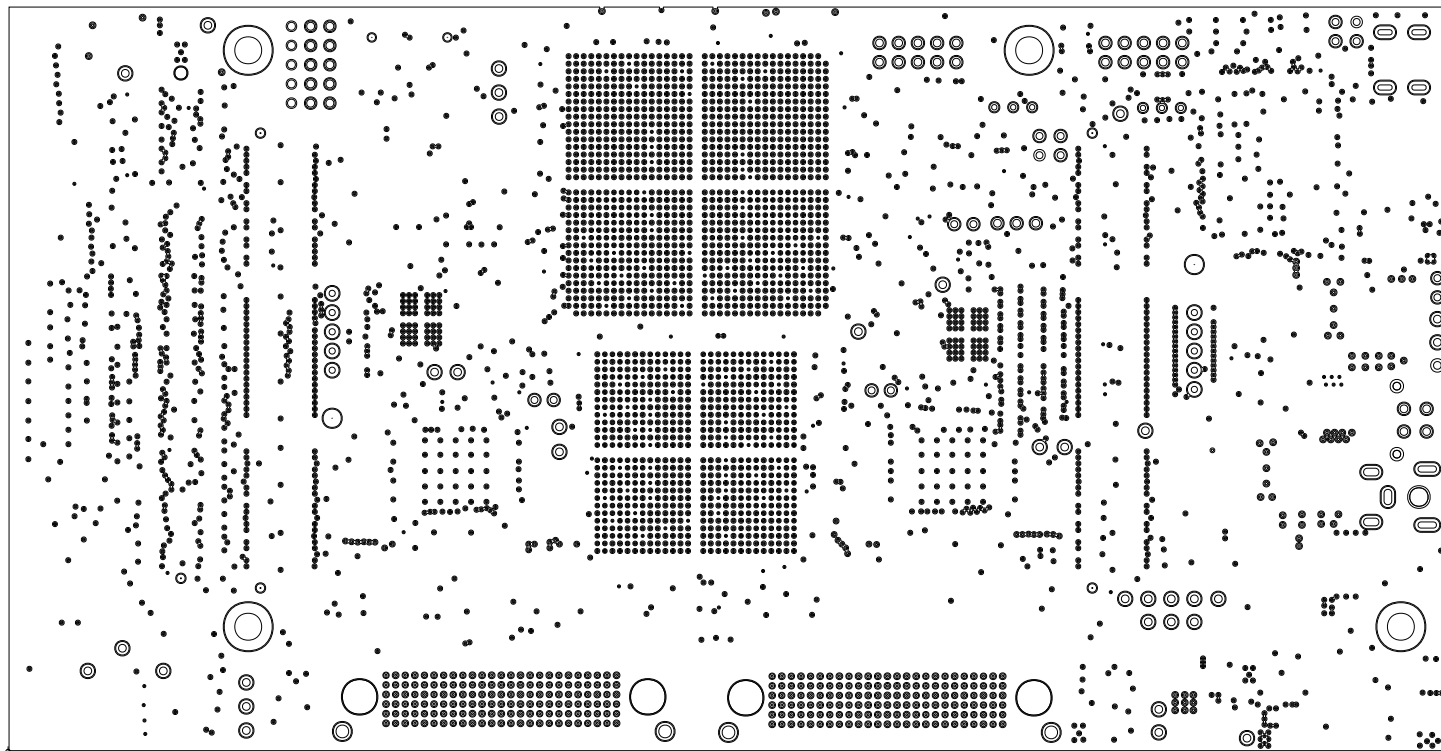
REV: C



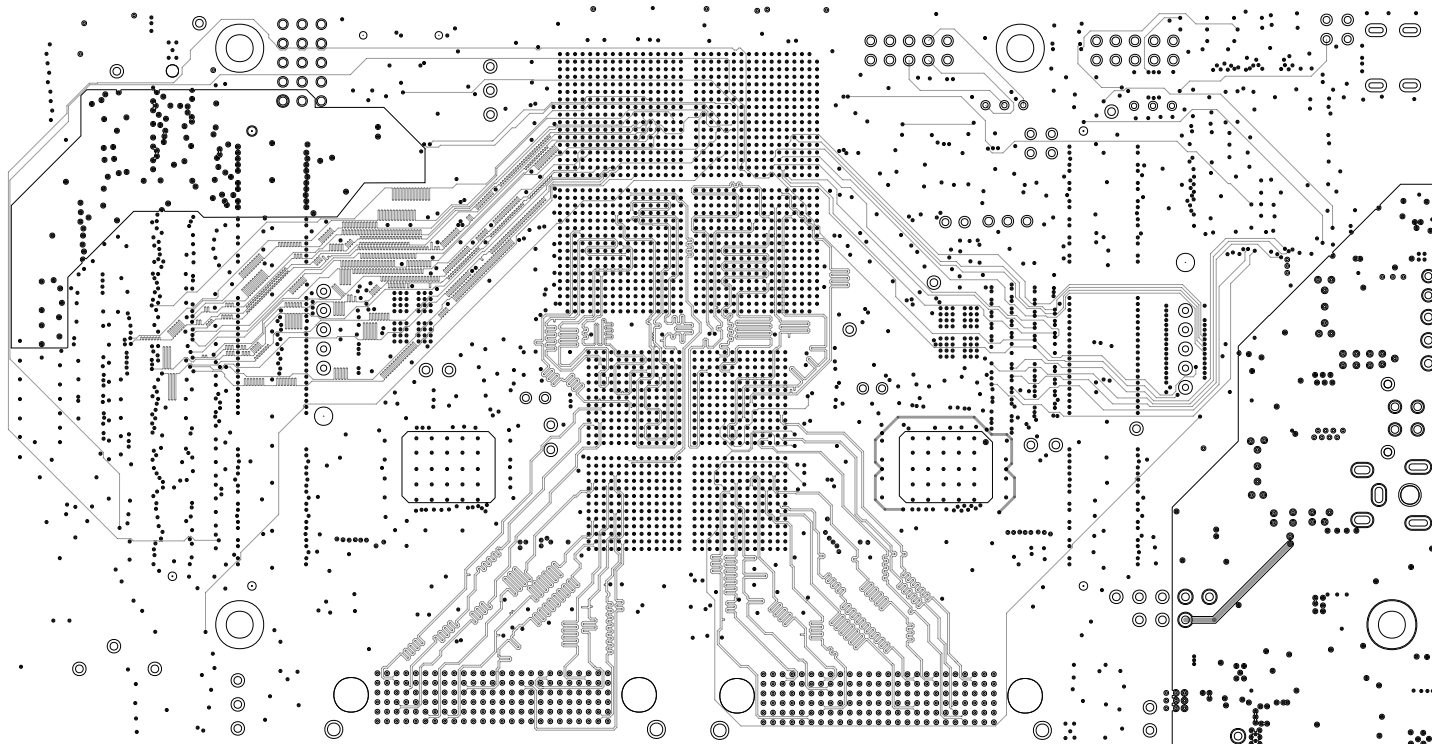
TEXAS INSTRUMENTS		
LAYER 2/20	DLPLCRC410EVM	
GROUND 1		
DATE : 06/09/2023	REV: C	



TEXAS INSTRUMENTS	
LAYER 3/20 SIGNAL 1	DLPLCRC410EVM
DATE: 06/09/2023	REV: C

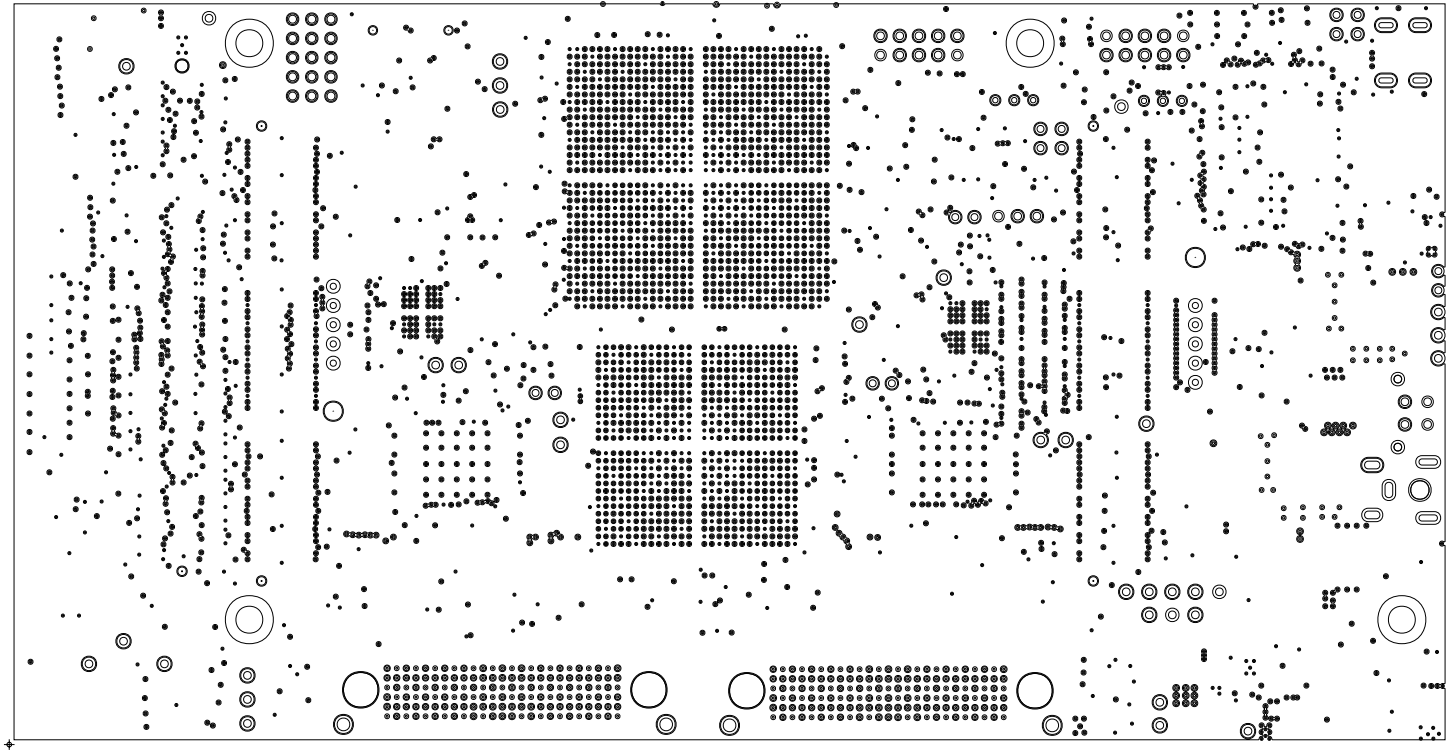


TEXAS INSTRUMENTS	
LAYER 4/20 POWER 1	DLPLCRC410EVM
DATE: 06/09/2023	REV: C

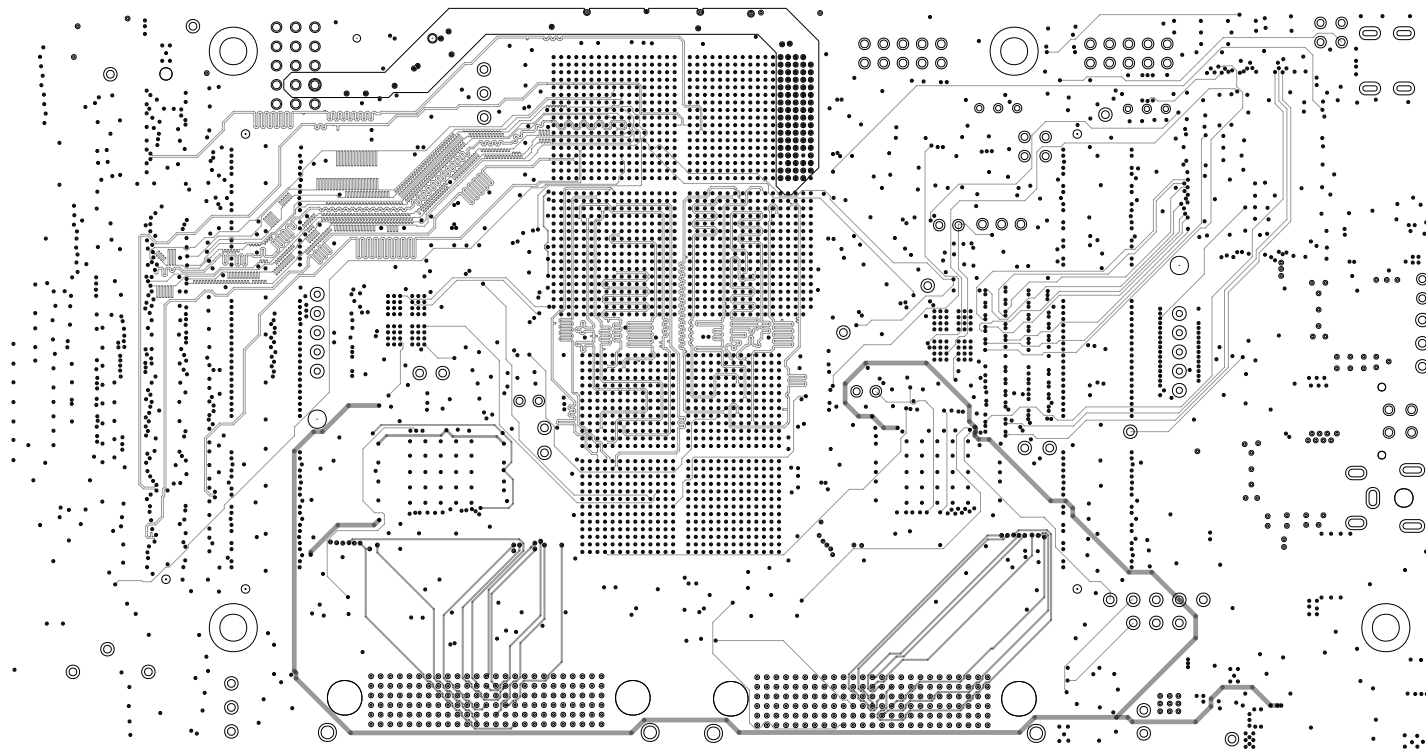


TEXAS INSTRUMENTS		
LAYER 5/20 SIGNAL 2	DLPLCRC410EVM	
DATE : 06/09/2023	REV: C	

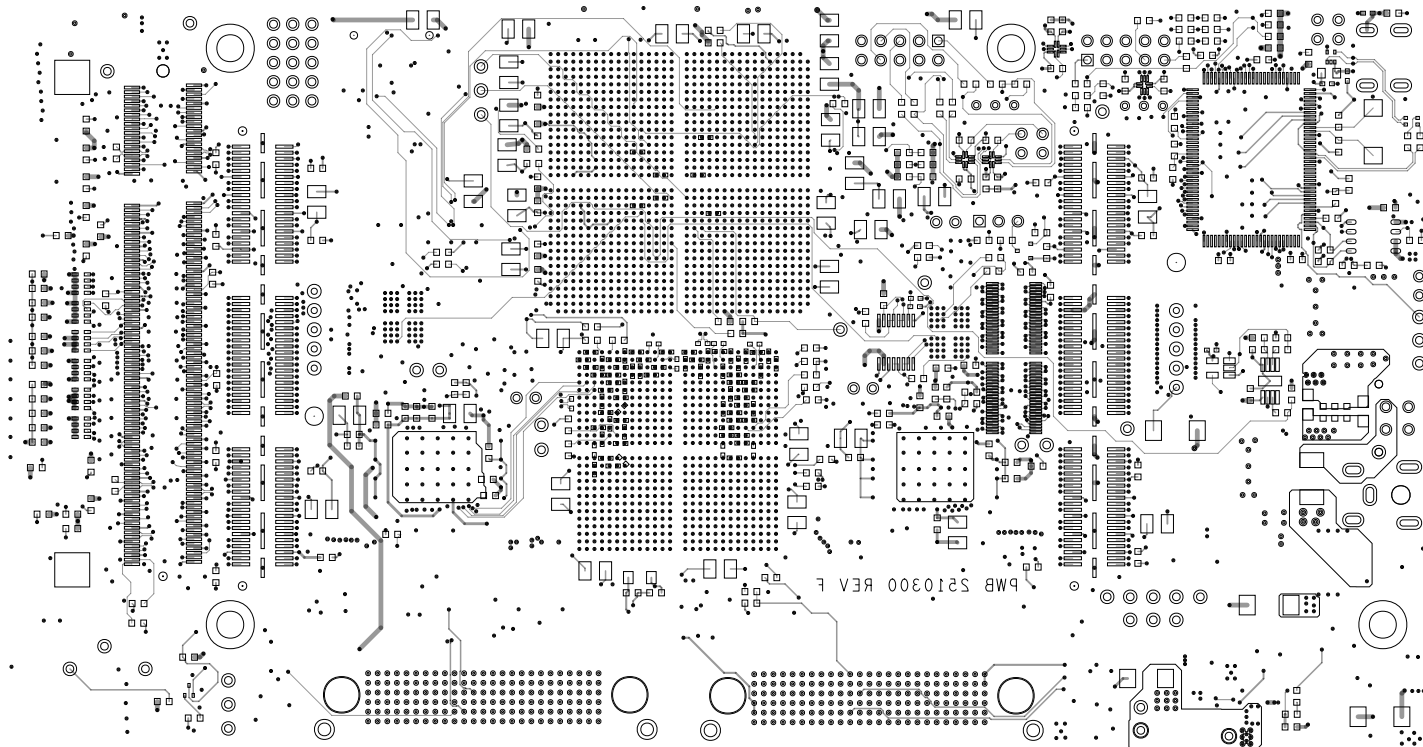




TEXAS INSTRUMENTS	
LAYER 6/20 GROUND 2	DLPLCRC410EVM
DATE: 06/09/2023	REV: C



TEXAS INSTRUMENTS		
LAYER 7/20 SIGNAL 3	DLPLCRC410EVM	
DATE: 06/09/2023	REV: C	



TEXAS INSTRUMENTS

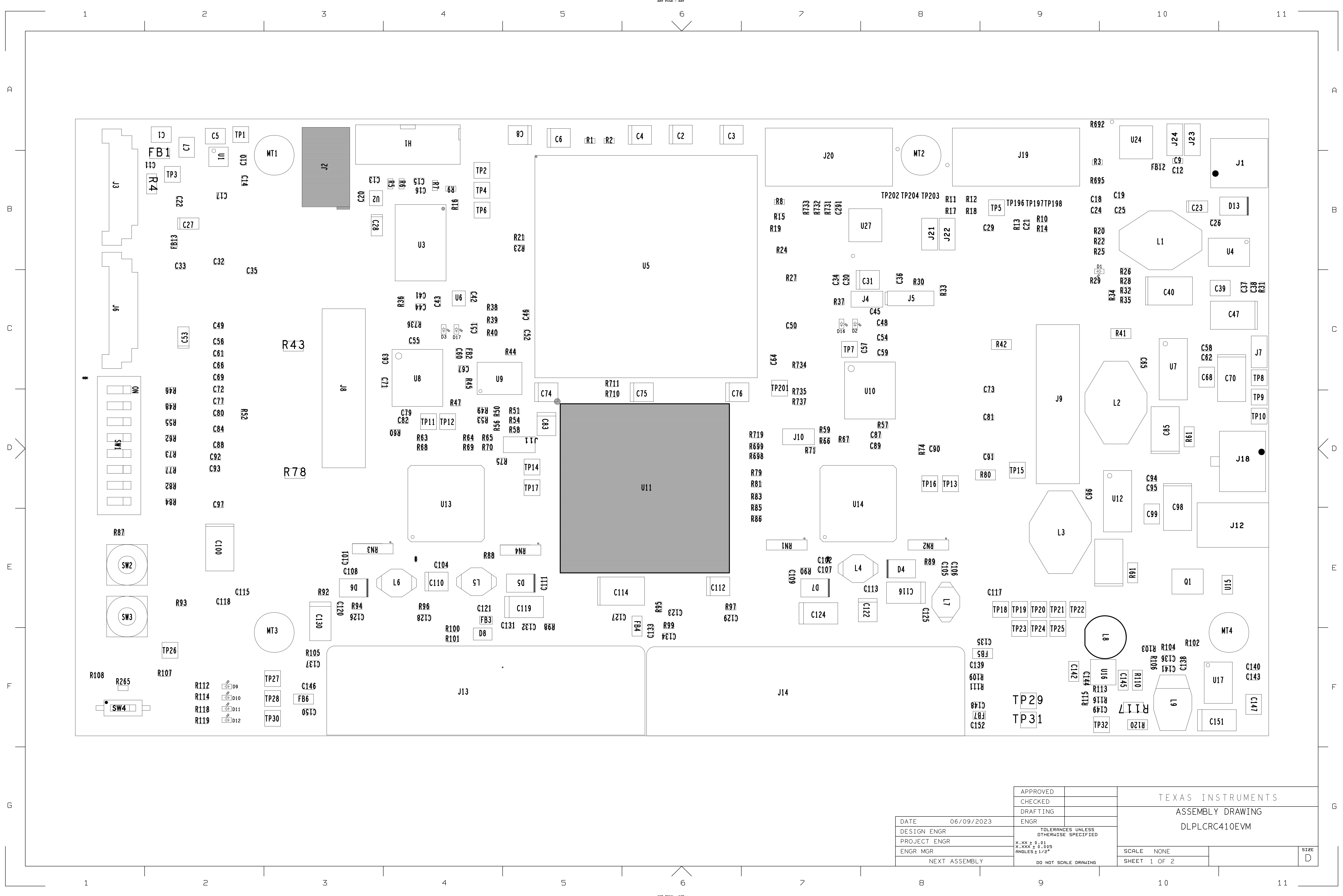
LAYER 20/20  
BOTTOM SIDE

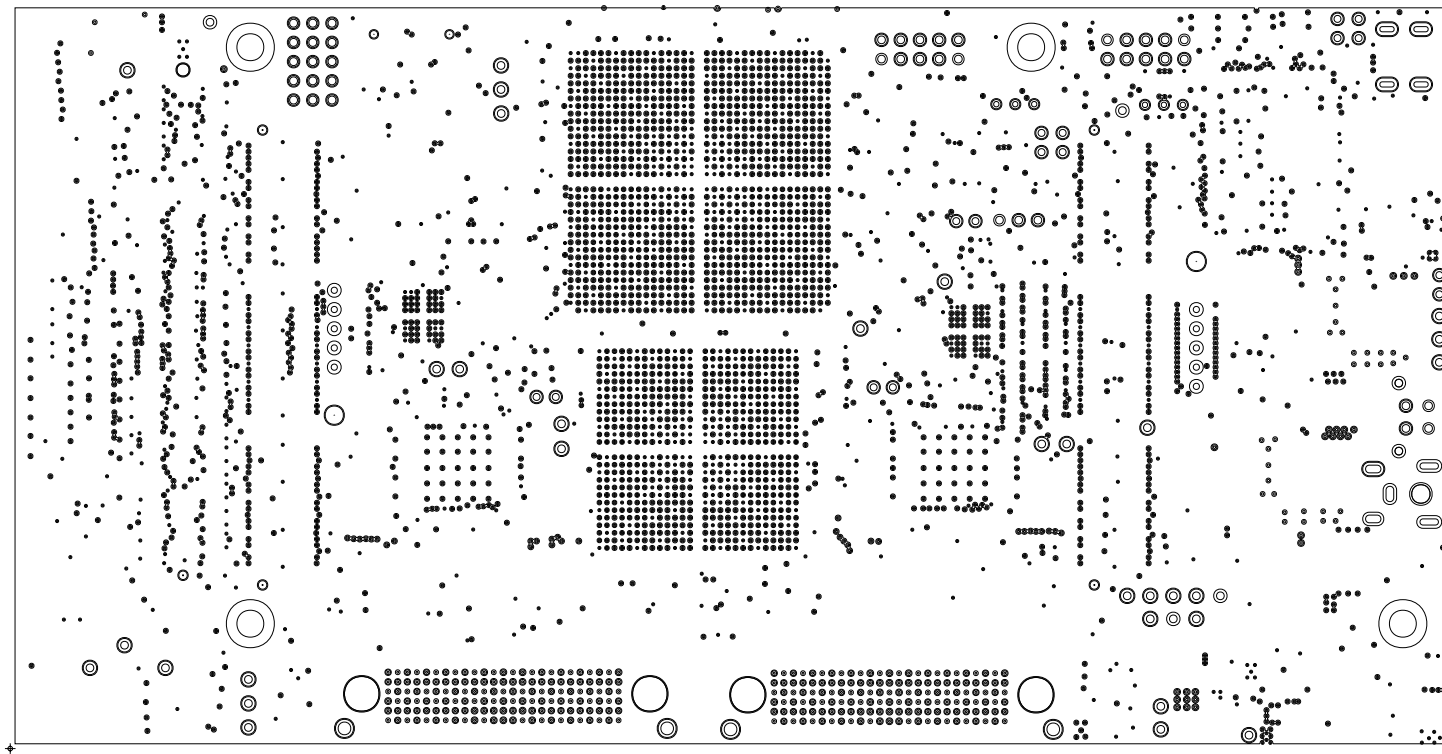
DLPLCRC410EVM

DATE: 06/09/2023

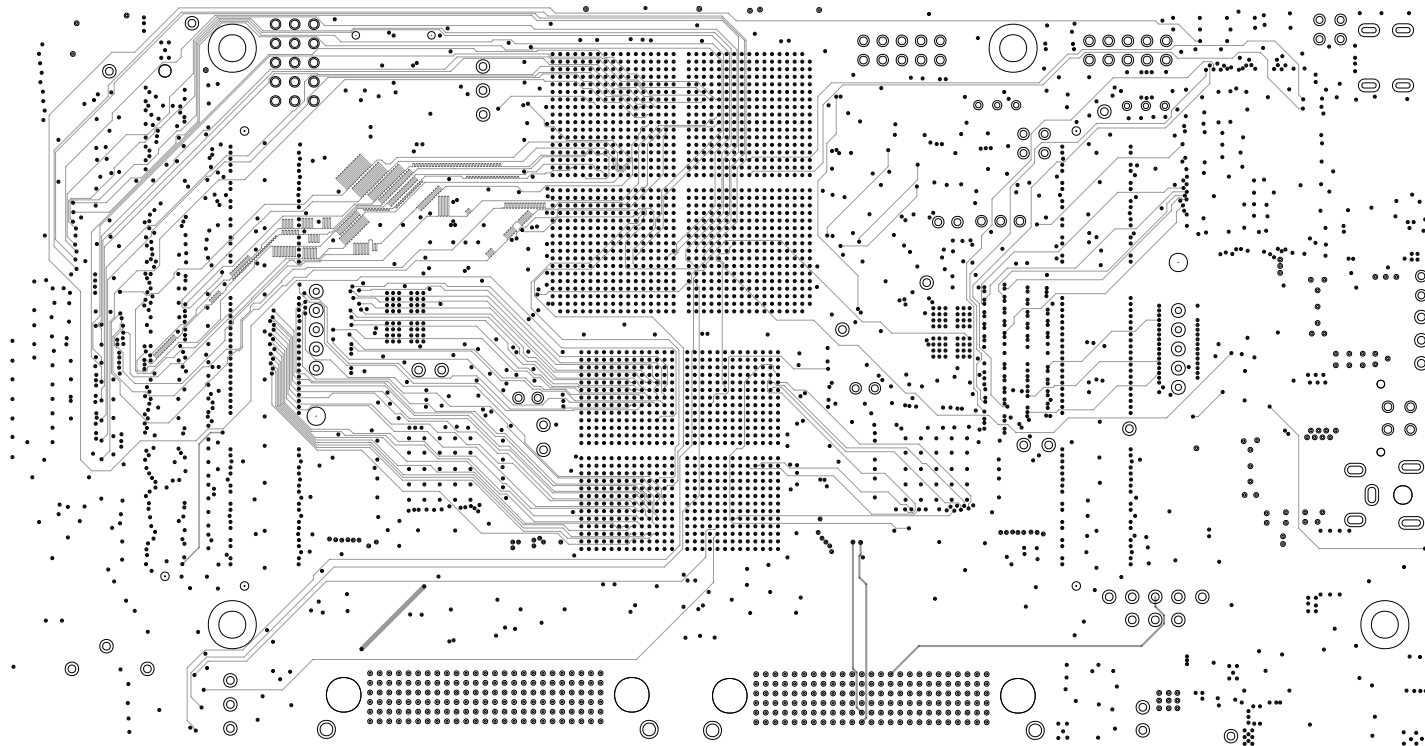
REV: C



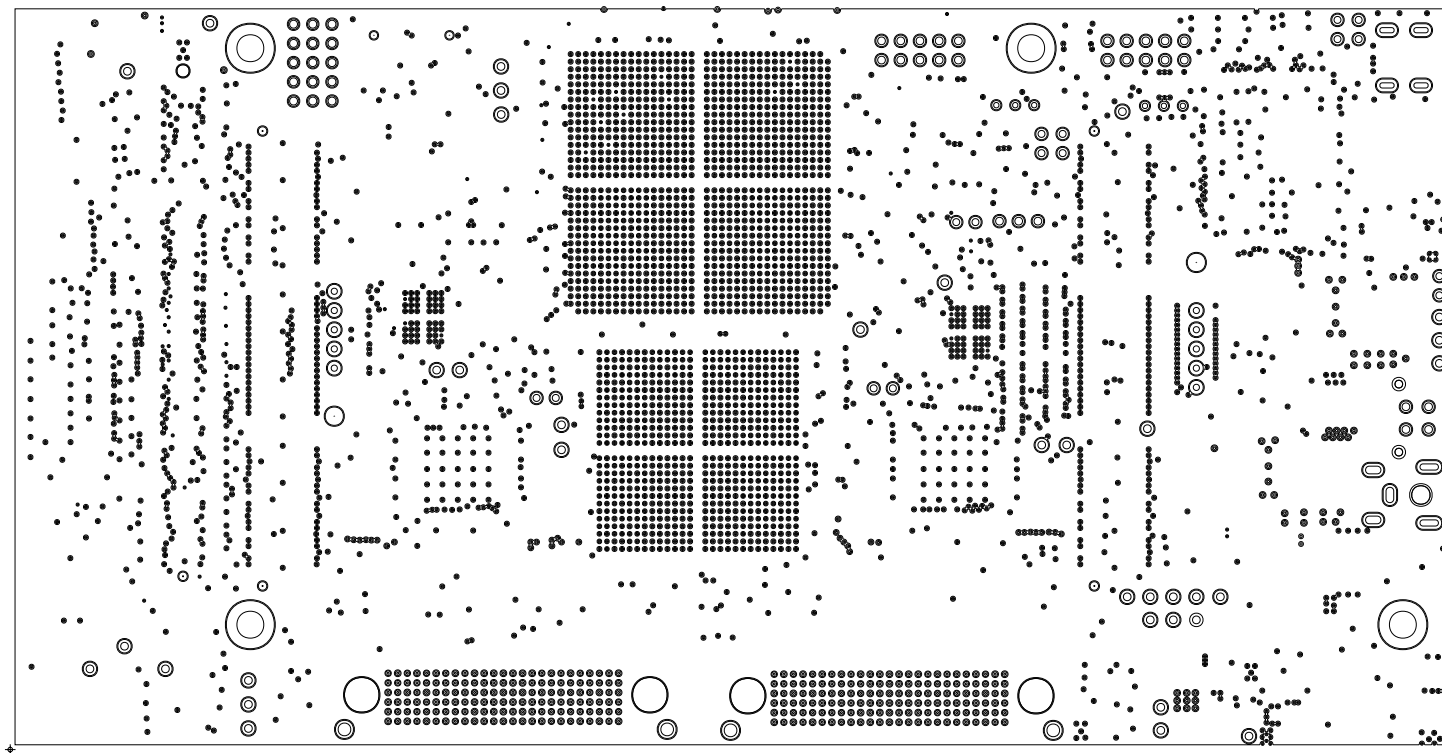




TEXAS INSTRUMENTS		
LAYER 8/20 GROUND 3	DLPLCRC410EVM	
DATE : 06/09/2023	REV: C	

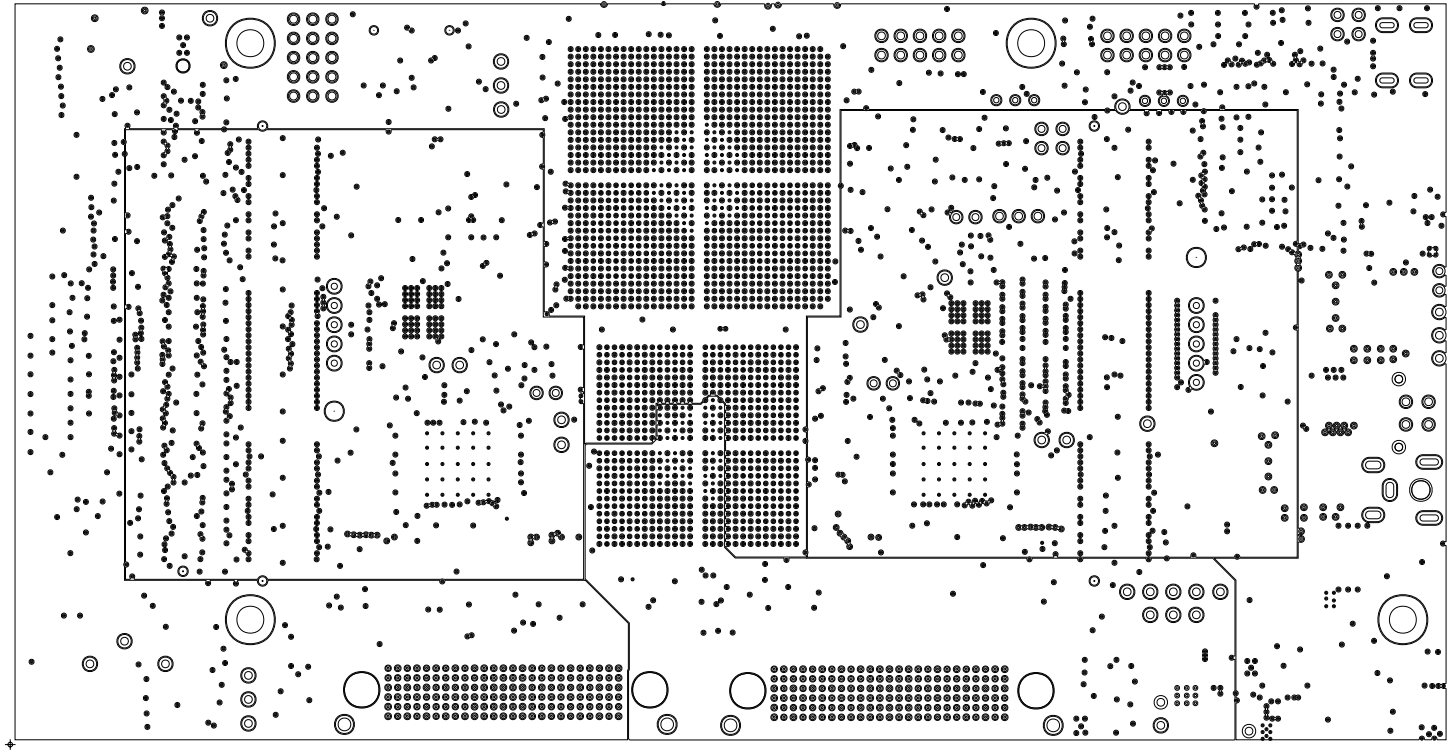


TEXAS INSTRUMENTS		
LAYER 9/20 SIGNAL 4	DLPLCRC410EVM	
DATE: 06/09/2023	REV: C	

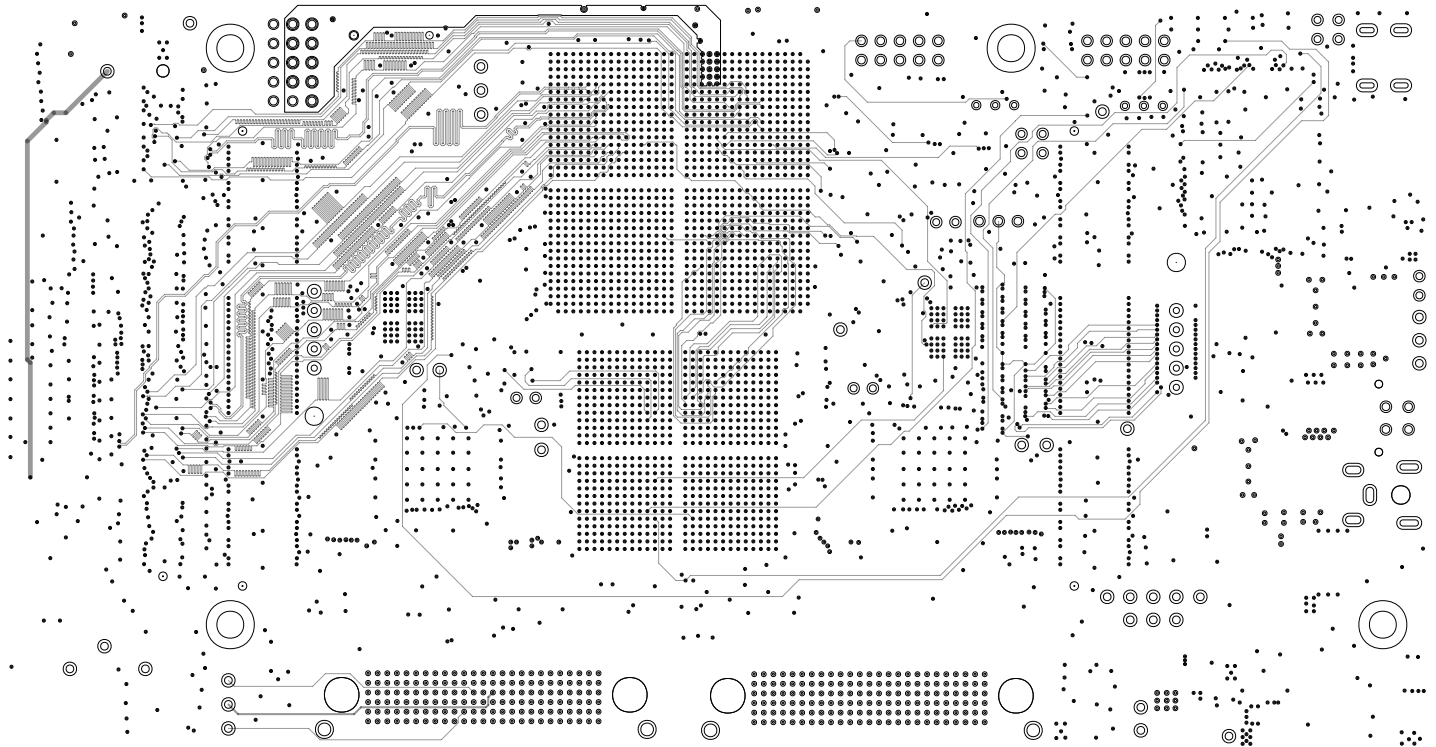


TEXAS INSTRUMENTS		
LAYER 10/20 POWER 2	DLPLCRC410EVM	
DATE: 06/09/2023	REV: C	

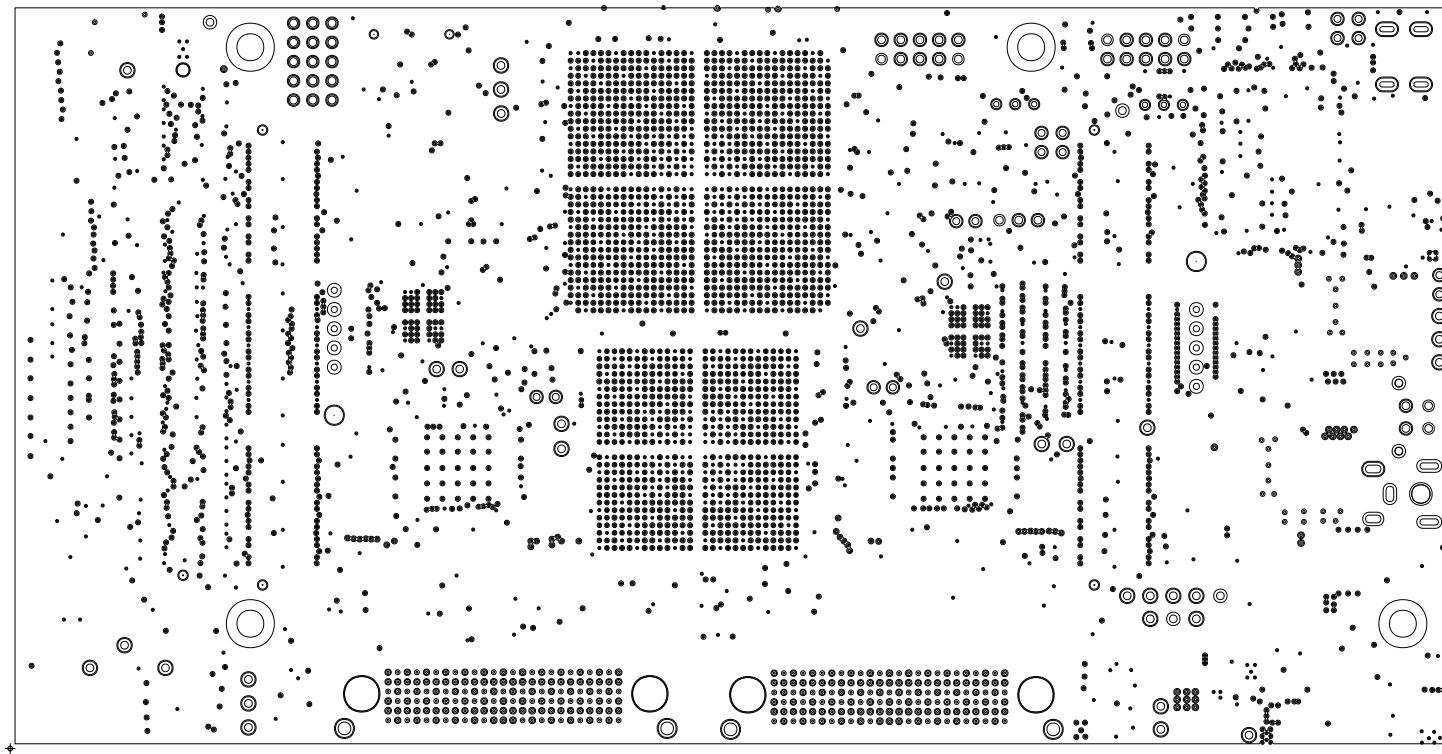




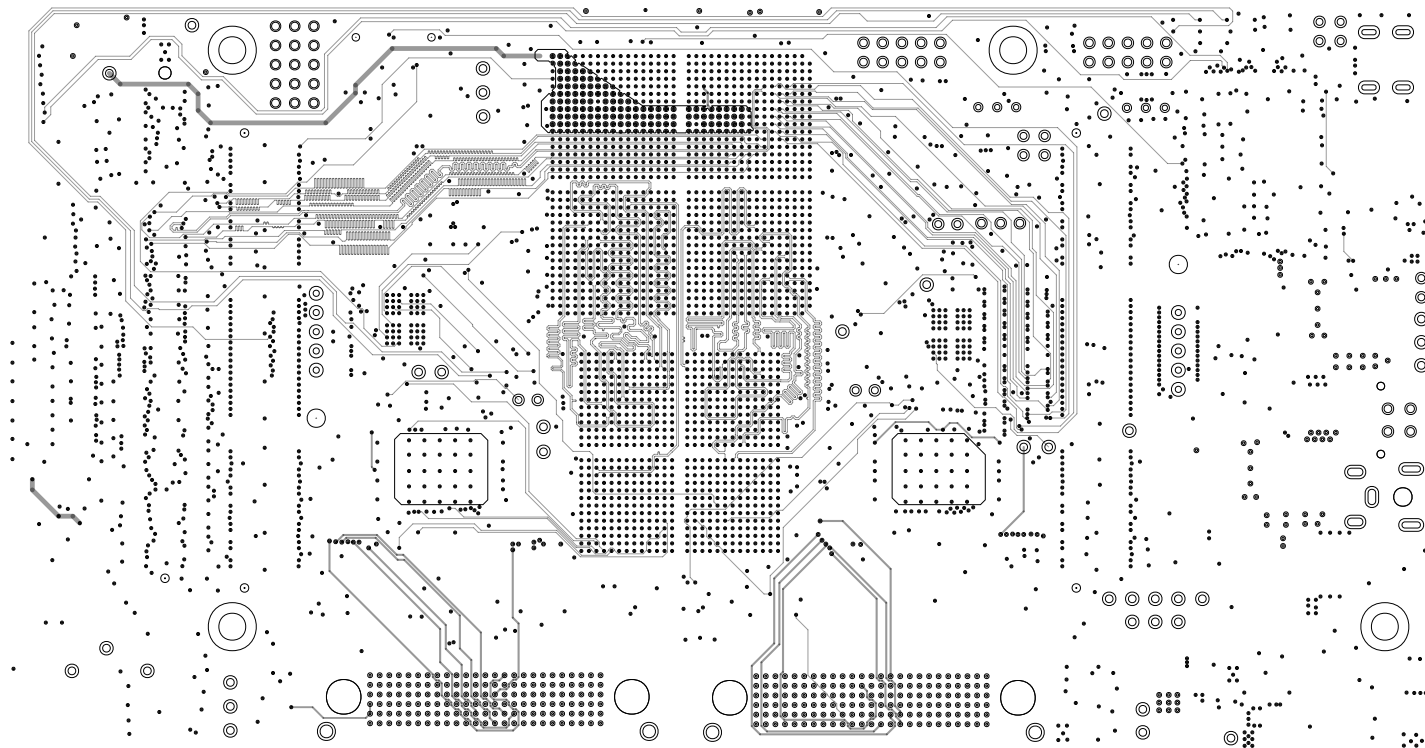
TEXAS INSTRUMENTS		
LAYER 11/20 POWER 3	DLPLCRC410EVM	
DATE: 06/09/2023	REV: C	



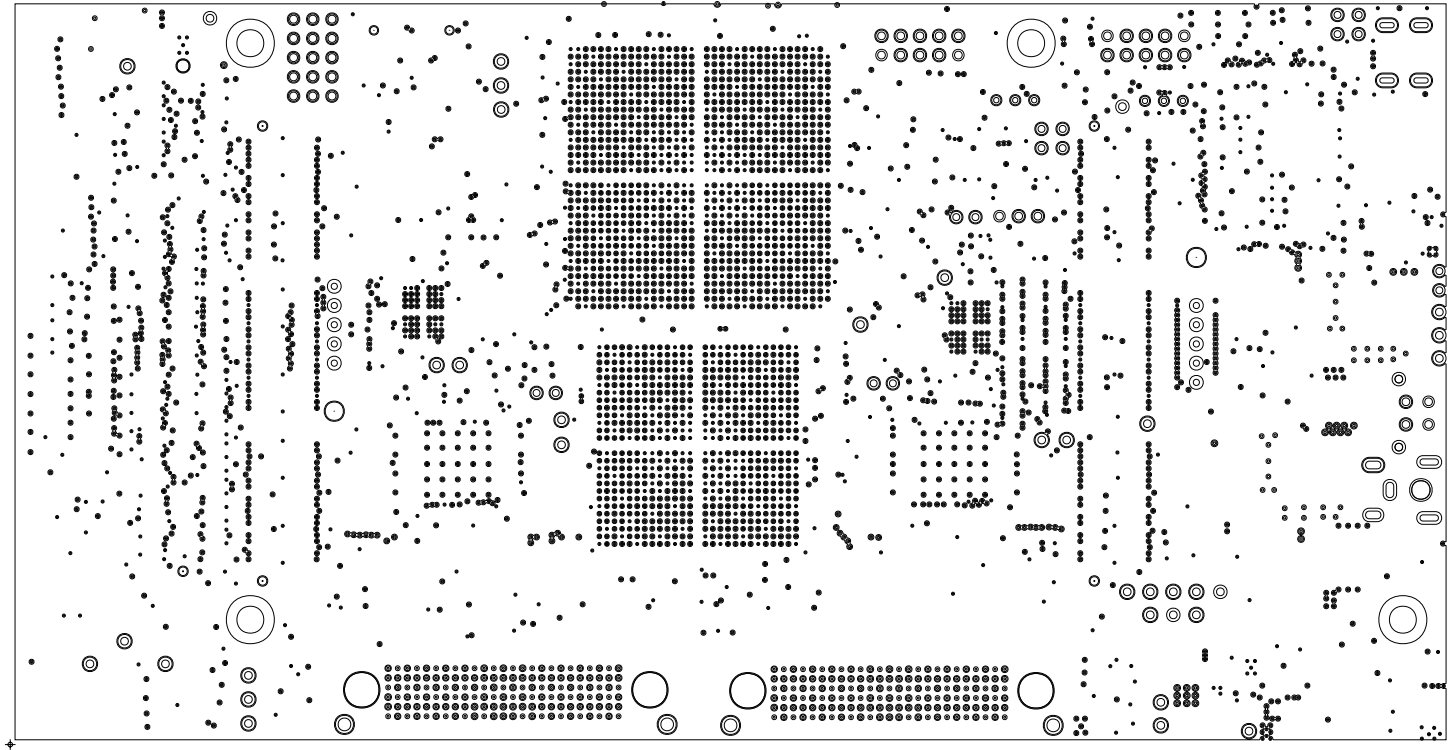
TEXAS INSTRUMENTS		
LAYER 12/20 SIGNAL 5	DLPLCRC410EVM	
DATE: 06/09/2023	REV: C	



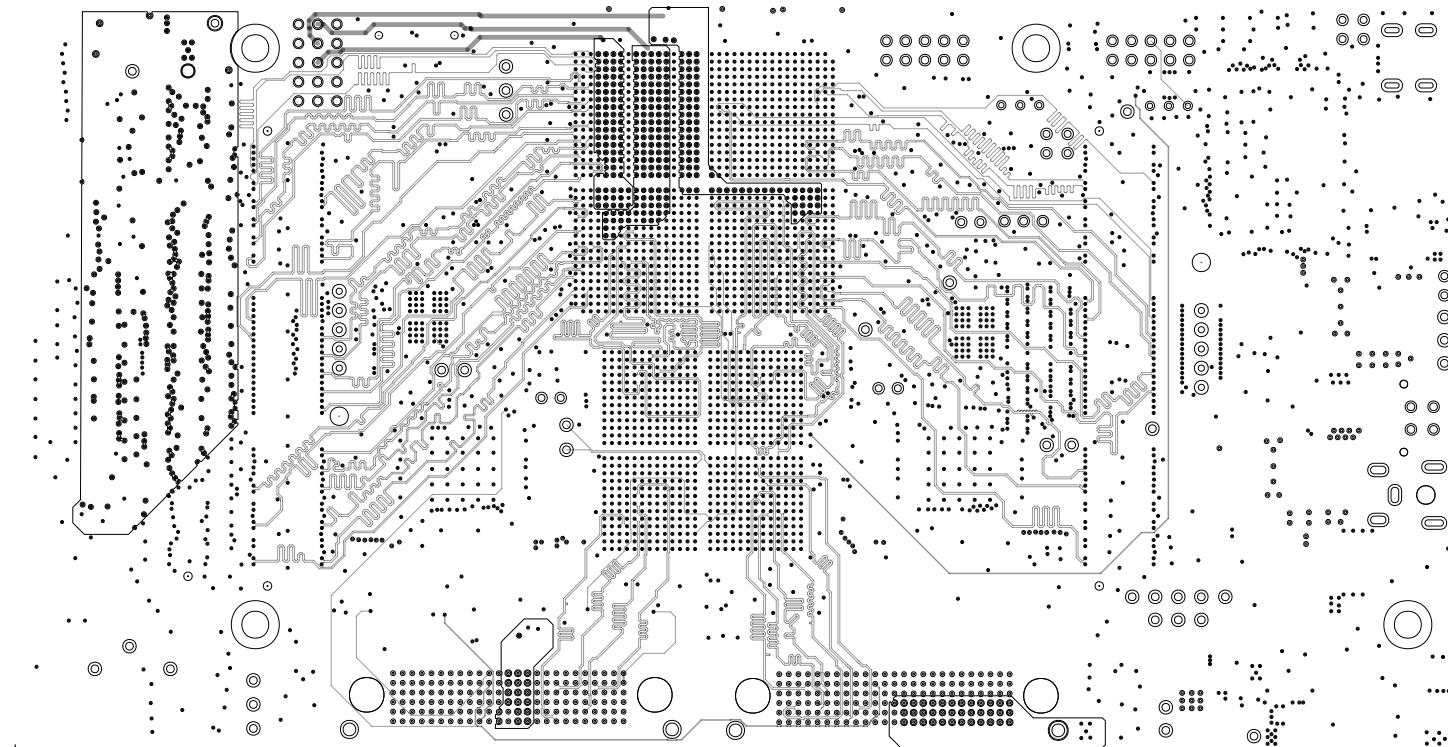
TEXAS INSTRUMENTS		
LAYER 13/20 GROUND 4		DLPLCRC410EVM
DATE: 06/09/2023		REV: C



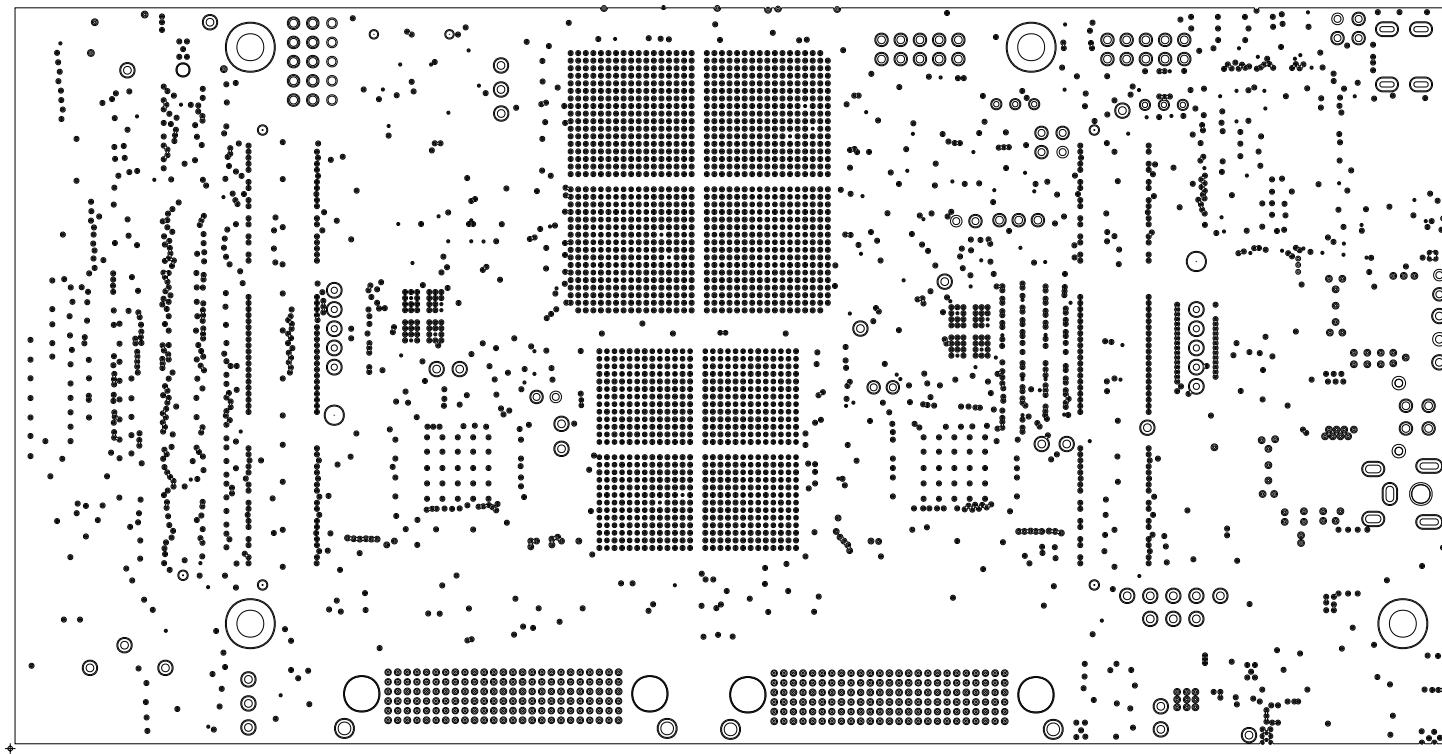
TEXAS INSTRUMENTS		
LAYER 14/20 SIGNAL 6	DLPLCRC410EVM	
DATE: 06/09/2023	REV: C	



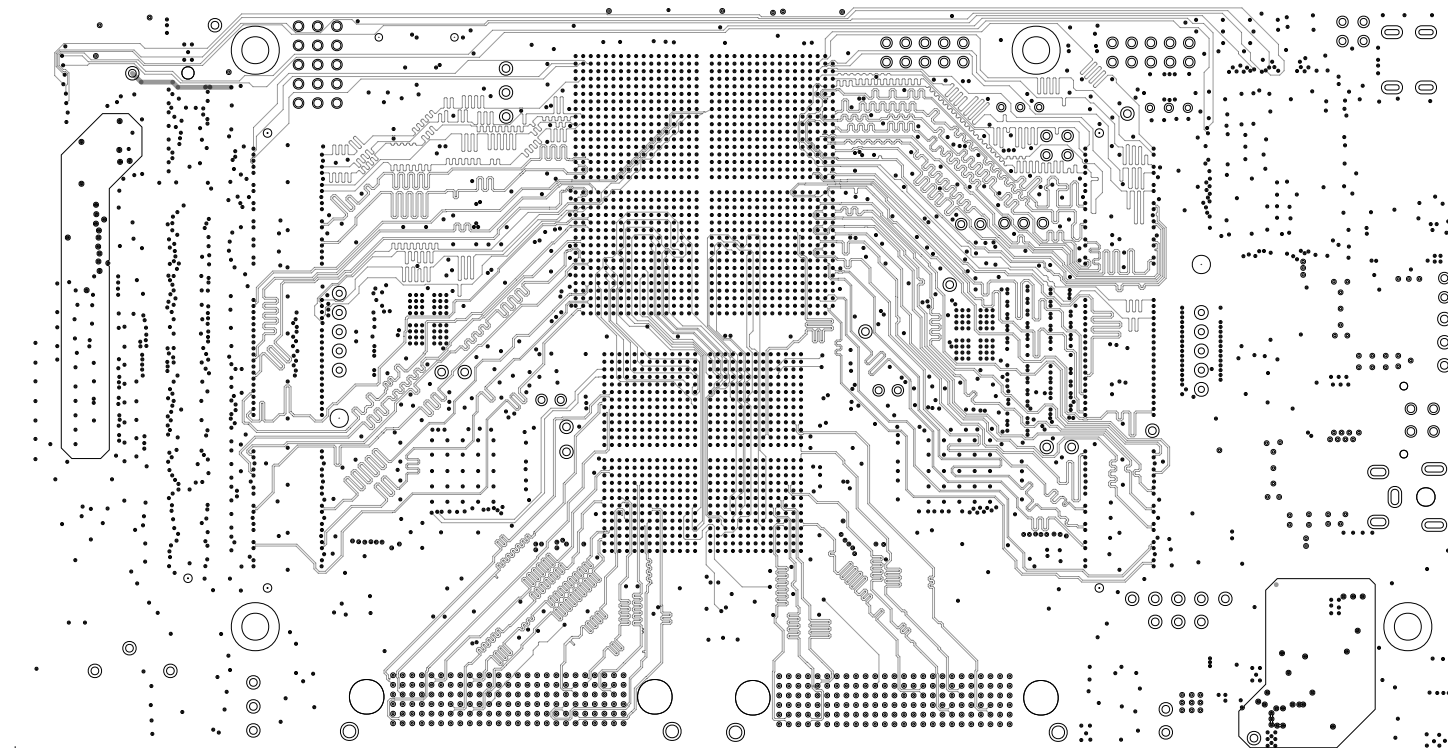
TEXAS INSTRUMENTS		
LAYER 15/20 GROUND 5		DLPLCRC410EVM
DATE: 06/09/2023		REV: C



TEXAS INSTRUMENTS		
LAYER 16/20 SIGNAL 7	DLPLCRC410EVM	
DATE: 06/09/2023	REV: C	

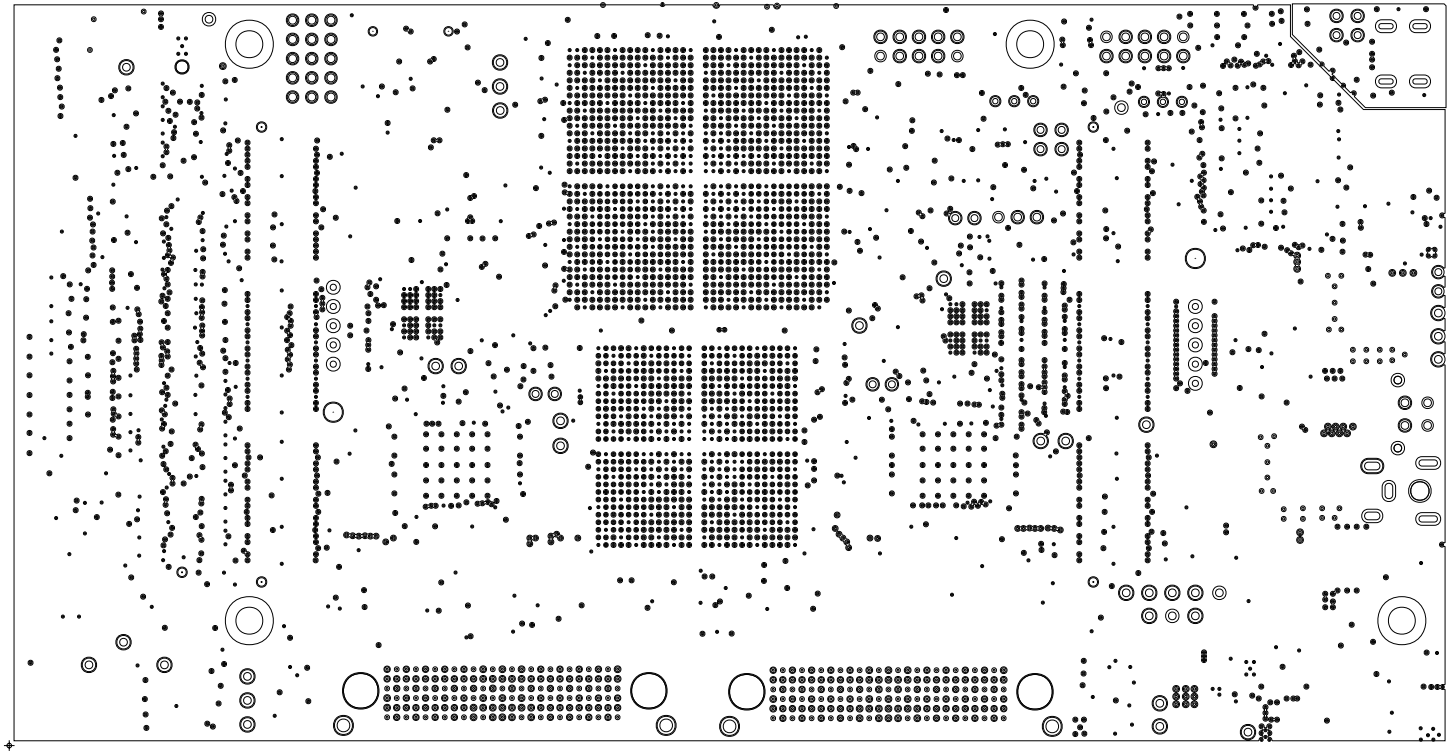


TEXAS INSTRUMENTS		
LAYER 17/20 POWER 4	DLPLCRC410EVM	
DATE: 06/09/2023	REV: C	

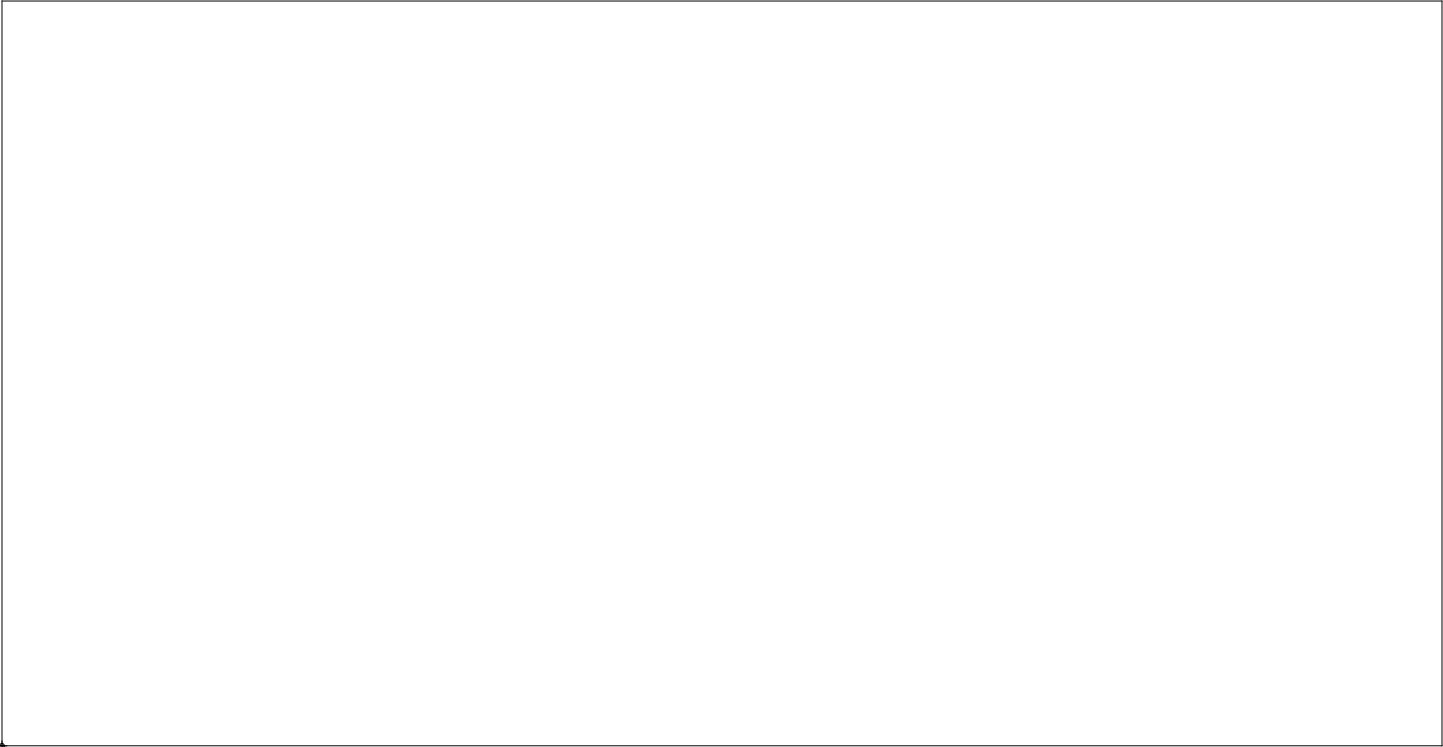


TEXAS INSTRUMENTS		
LAYER 18/20 SIGNAL 8	DLPLCRC410EVM	
DATE: 06/09/2023	REV: C	

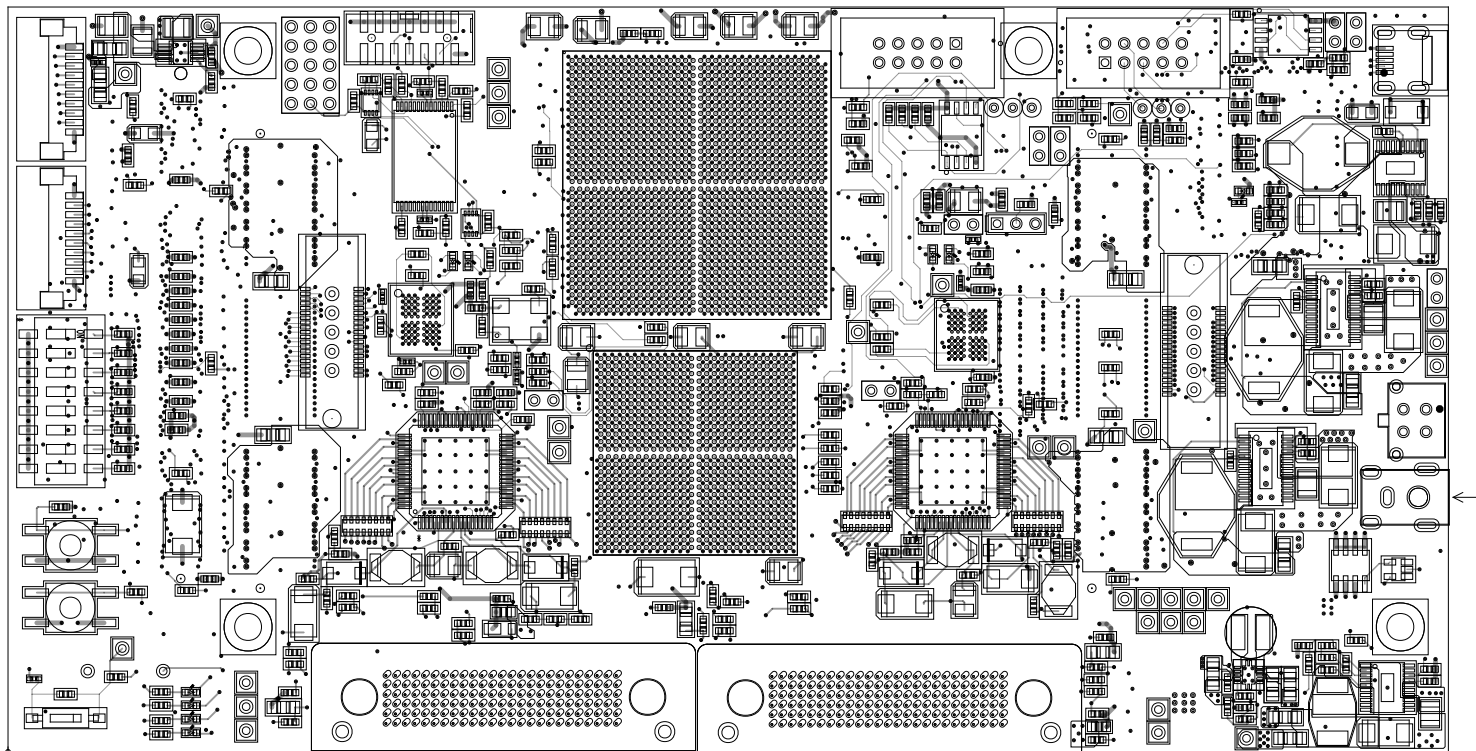




TEXAS INSTRUMENTS		
LAYER 19/20 GROUND 6		DLPLCRC410EVM
DATE: 06/09/2023		REV: C



TEXAS INSTRUMENTS	
OUTLINE	DLPLCRC410EVM
DATE: 06/09/2023	REV: C



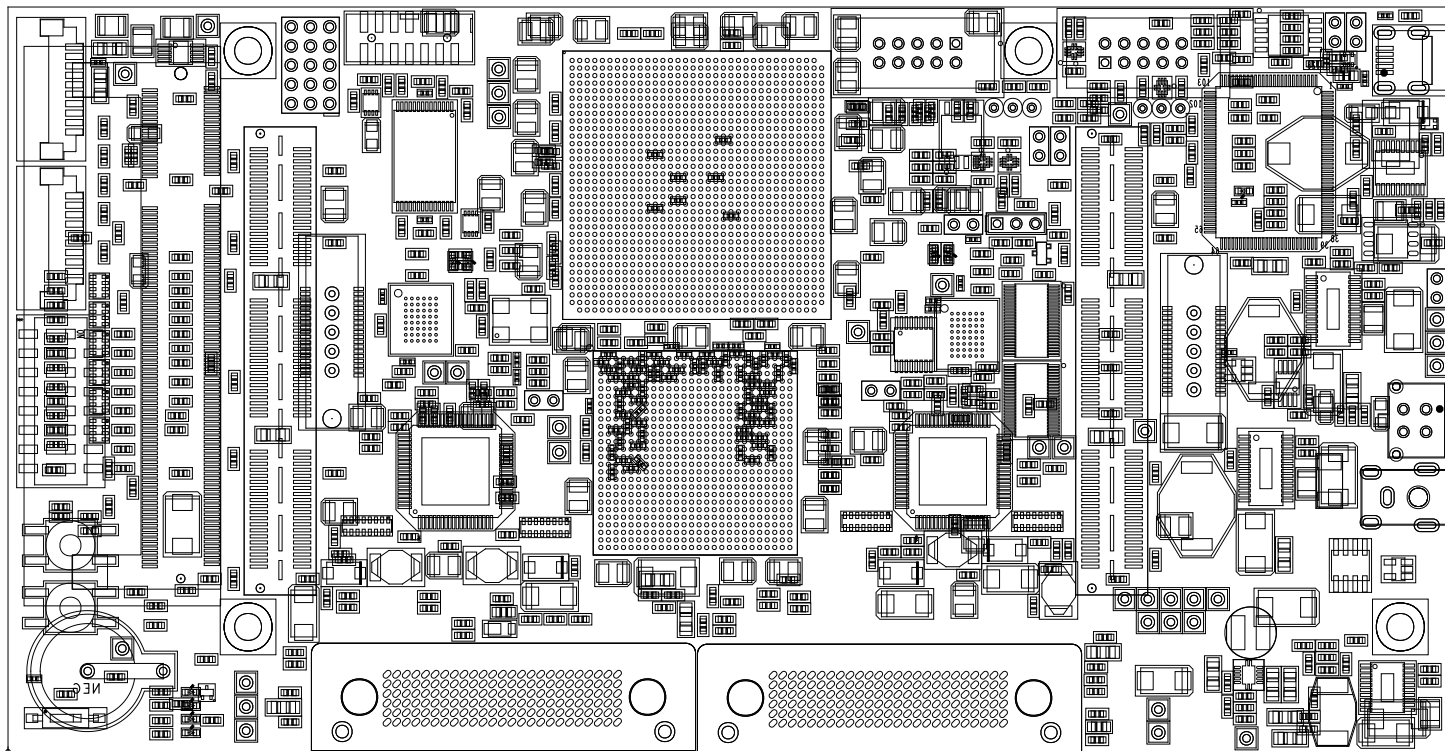
TEXAS INSTRUMENTS

LAYER 1/20  
TOP SIDE

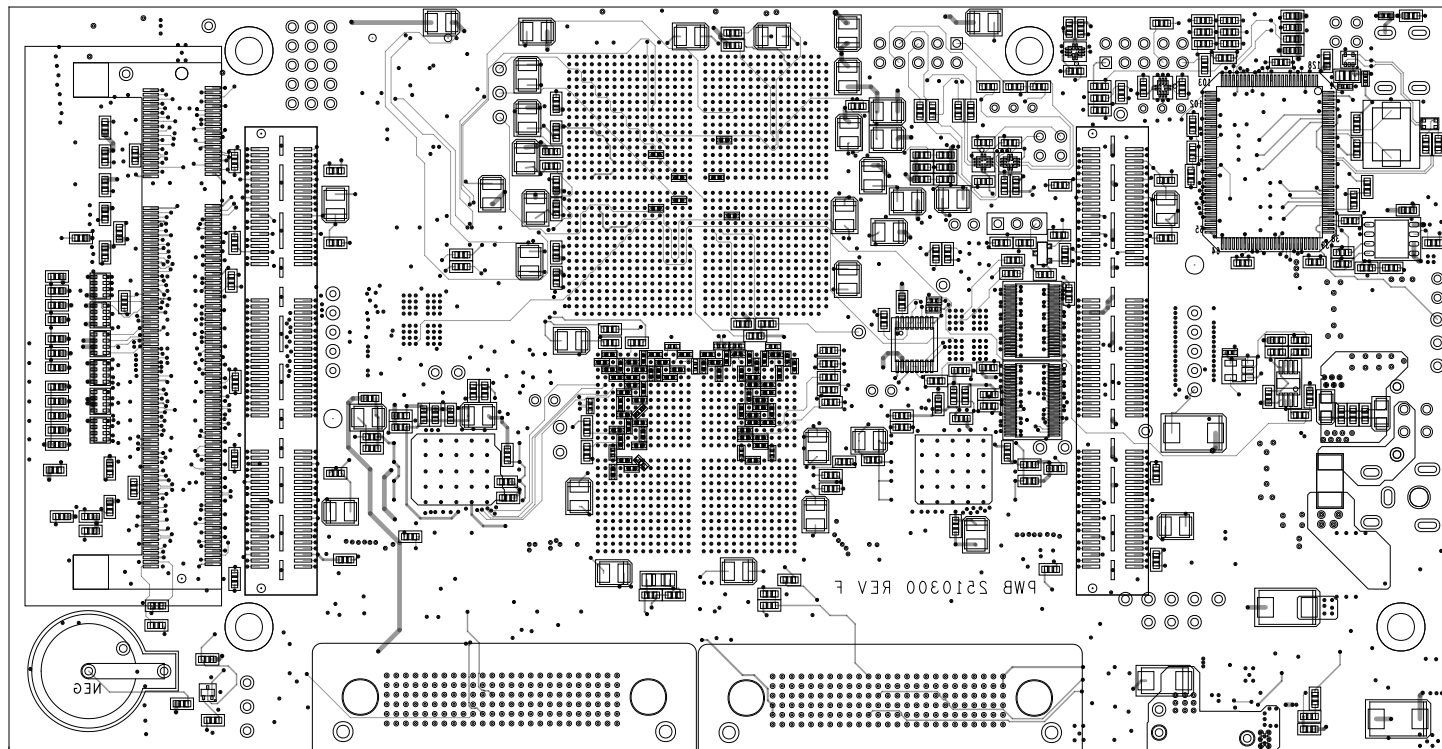
DLPLCRC410EVM

DATE: 06/09/2023

REV: C



TEXAS INSTRUMENTS	
OUTLINE	DLPLCRC410EVM
DATE: 06/09/2023	REV: C



TEXAS INSTRUMENTS		
LAYER 20/20 BOTTOM SIDE	DLPLCRC410EVM	
DATE: 06/09/2023	REV: C	